

Flat head - Near edge

Textile

# D110A

Black

## FEATURES

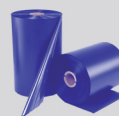
- Printing on receiving cloths (nylon, polyester, acetate).
- Superior ironing resistance at temperature up to 150°C.
- The printed image is very resistant to water washing, dry cleaning, stone wash and bleach.
- Ricoh's unique coating on the back allows reliable and superior matching qualities with the thermal head.

## APPLICATION AREA



Cloth care labels

## COLORS



D210A



D310A

## GENERAL CONDITIONS

**Usage conditions:** 5 to 35°C with 30 to 85% of relative humidity.

**Storage life:** 24 months after slitting day.

**Storage conditions:** Keep indoor avoiding high temperature (such as beside a heat source), high humidity, direct sun light.

## CERTIFICATES / REGISTRATIONS / DIRECTIVES

- TSCA (Toxic Substances Control Act)
- RoHs
- WEEE
- 2003/11/EC
- 2000/53/EC
- 76/769/EEC
- ISO EN71-3
- REACH



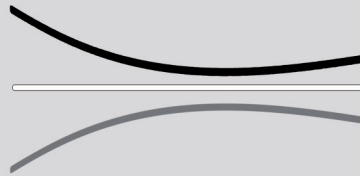
For other directives, please contact us.

## RIBBON PROPERTIES

Ink melting point: 83°C

Polyester film thickness: 4.5µm

Friction coefficient: < 0.050



Total ribbon thickness: < 9µm

Tearing resistance: > 200N/mm<sup>2</sup>

Transmission density: 0.65mini

## PRINTING PROPERTIES

Maximum printing speed: 6IPS

	Nylon	Polyester satin	Acetate
Compatibility	✓	✓	✓
Image density	1.42	1.47	1.33

Image resolution for nylon and polyester satin:

- Minimum size:
- For care symbols: 4.0mm
  - For the characters: 1.0mm

## DURABILITY OF PRINTED IMAGE

### TESTS with standard nylon care labels

#### Standard wash

25 washing at 40°C during 45 min  
Test ISO C06A1M

#### Standard wash

25 washing at 60°C during 45 min  
Test ISO C06A1M

#### Stone wash

1 time

#### Dry cleaning

5 times

#### Direct & indirect ironing (150°C)

20 back and forwards

#### Bleaching

diluted to 5% during 2h

#### Light

Xenon lamp at 650W/m<sup>2</sup> during  
1 month

### RESULTS

ANSI > B

ANSI > B

ANSI > C

ANSI > B

ANSI > B

ANSI > B

ANSI > B



### D110A durability

5: No damage (Good)

0: Erased (Bad)

■ D110A with nylon

■ D110A with polyester satin

**Note:** These performances are for guidance only. Results are obtained with adapted receiving material and optimum print conditions. (Ricoh test method)