

Flat head

Wax-Resin

# B110A

Black

## FEATURES

- Higher heat resistance up to 120°C.
- Superior smear resistance.
- Applicable to a wide range of receiving labels: paper, coated paper, PET/PP/PE/PVC films...
- Ricoh's unique coating on the back allows reliable and superior matching qualities with the thermal head.

## APPLICATION AREAS



Tags



Multipurpose labels



Electronics

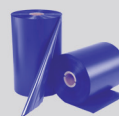


Shipping / Storage / Logistics



Healthcare

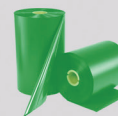
## COLORS



B210A



B310A



B610A

## GENERAL CONDITIONS

**Usage conditions:** 5 to 35°C at 30 to 85% of relative humidity.

**Storage life:** 24 months after slitting day.

**Storage conditions:** Keep indoor avoiding high temperature (such as beside a heat source), high humidity, direct sun light.

## CERTIFICATES / REGISTRATION / DIRECTIVES

- TSCA (Toxic Substances Control Act)
- RoHs
- WEEE
- 2003/11/EC
- 2000/53/EC
- 76/769/EEC
- ISO EN71-3
- REACH
- Direct food contact

*For other directives, please contact us.*

**ISEGA**

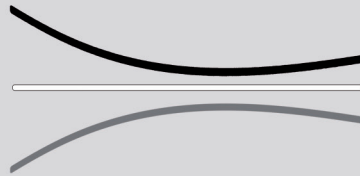


## RIBBON PROPERTIES

Ink melting point: 84°C

Polyester film thickness: 4.5µm

Friction coefficient: < 0.035



Total ribbon thickness: < 9µm

Tearing resistance: > 200N/mm<sup>2</sup>

Transmission density: 1.00mini

## PRINTING PROPERTIES

Maximum printing speed: 10IPS

	Non coated paper	Coated paper	PET	PP	PE	PVC
Compatibility	✓	✓	✓	✓	✓	✓
Image density	1.56	2.03	1.53	1.57	1.57	1.46

**Note:** Smoothness Bekk for paper family must be over 200s.

Image resolution for paper & film:

Minimum size: - For the lines: 0.1mm

- For the characters: 1.0mm

## DURABILITY OF PRINTED IMAGE

### TESTS

Smear + heat (50°C)

Smear with carboard  
(weight 1kg - 50 back & forwards)

Heat (120°C)

Heat gradient 3,6kgF/cm<sup>2</sup>

Scratch

50 back and forwards with a rub tester

Light

Xenon lamp at 650W/m<sup>2</sup>

Water

24 hours in water

### RESULTS

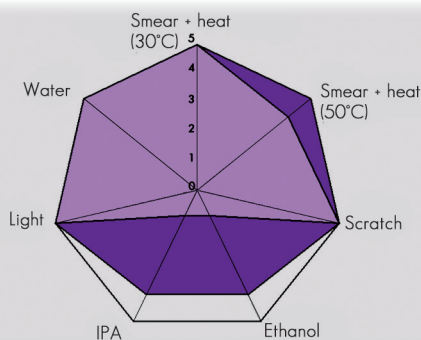
ANSI > B

No ink on the cotton fabric

ANSI > B

ANSI A

ANSI A



### B110A durability

5: No damage (Good)

0: Erased (Bad)

 B110A with paper

 B110A with film

**Note:** These performances are for guidance only. Results are obtained with adapted receiving material and optimum print conditions. (Ricoh test method)