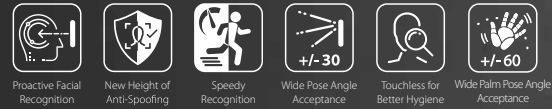


# MINIAC Series

Linux-Based Hybrid-Biometric Access Control & Time and Attendance Terminal with Visible Light Facial Recognition & Palm Recognition



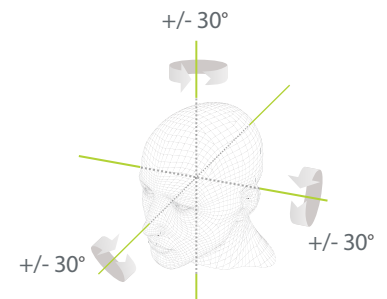
Compatible with ZKBio Access IVS

## Features

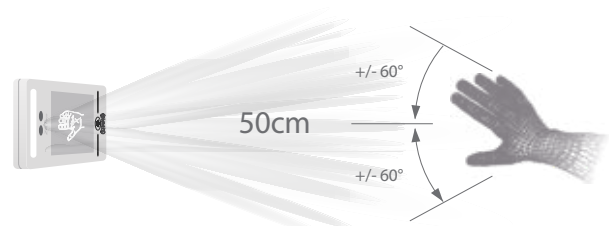
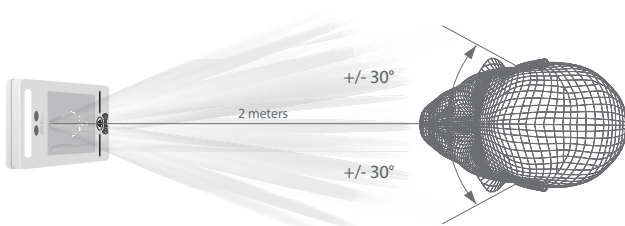
- Visible Light Facial Recognition
- Anti-spoofing algorithm against print attack (laser, color and B/W photos), videos attack and 3D mask attack
- Multiple verification methods: Face / Palm / Card / Password
- Available card modules: 125kHz ID card (EM) / 13.56MHz IC card / HID card / Felica card
- Supplement light with adjustable brightness
- 800 face templates capacity, 800 palm templates capacity

## 2 meters of recognition distance and extra wide angle recognition

The recognition distance has been greatly extended to 2 meters, which significantly improves the maximum traffic rate. While most of the algorithms only support +/-15° of detectable face angle, MINIAC doubles the detection angle in terms of head rotation and tilt to +/- 30°.



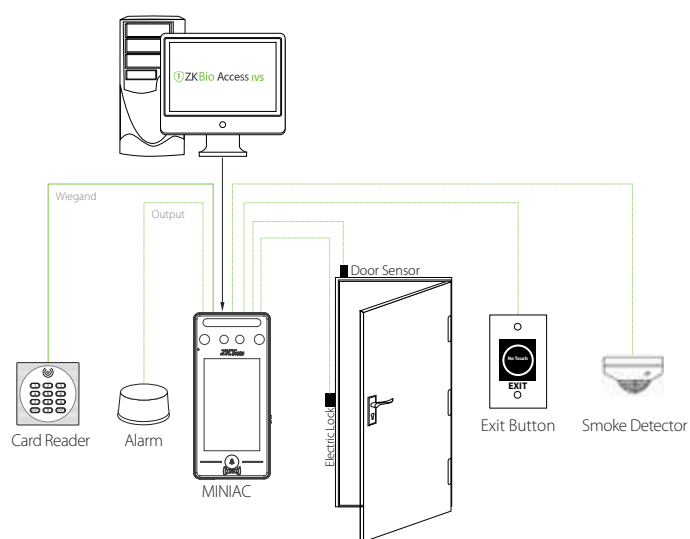
Touchless palm authentication method with a novel hand tracking technique allowing angle tolerance as wide as +/-60° in the roll axis and a recognition distance of 50cm.



## Specifications

Product model	MiniAC	MiniAC-Intercom
Display	4" touch screen	
Face Capacity	800	
Palm Capacity	800	
Card Capacity	1,000	1,000 (Optional)
Transactions	150,000	
Operation System	Linux	
Standard Functions	ADMS, T9 Input, DST, Camera, 9-digit User ID, Access Levels, Groups, Holidays, Anti-passback, Record Query, Tamper Switch Alarm, Multiple Verification Methods, Palm Recognition, Wiegand In/Out	
Hardware	900MHz Dual Core CPU; 512MB RAM / 512MB Flash; 2MP Binocular Camera; Adjustable LED Supplement Lighting	
Communication	TCP/IP, USB Host, WiFi, RS485	TCP/IP, USB Host, WIFI(Optional), RS485
Access Control Interface	3rd-party Electric Lock, Door Sensor, Exit Button, Alarm Output, Auxiliary Input	
Video Intercom	N/A	Support
Optional Function	13.56MHz IC Card, HID card, Felica card, SRB Function, Cable Box	
Facial Recognition Speed	≤1s	
Biometrics Algorithms	ZKFace V5.8 & ZKPalm V12.0	
Power Supply	12V 3A	
Working Humidity	10% ~ 90%	
Working Temperature	0°C ~ 45°C (32°F ~ 113°F)	
Dimensions (W*H*D)	72.94 * 157.94 * 23 (mm)	
Net Weight	260g	
Gross Weight	850g	
Supported Software	ZKBioAccess IVS, ZKBioSecurity V5000	

## Configuration



## Dimensions (mm)

