

DESKTOP COLOR LABEL PRINTERS VP500 / VP550



Right Labels, Right Time, Right Cost.



High Print
Speed



Expressive
Color



High-Capacity
200ml
Ink Tanks

MAKE LABELING SIMPLE

VP500/VP550 produces professional-quality labels for all your small-batch specialty products. Whether you are new to digital labeling or upgrading your thermal printer, these budget-friendly printers help you print brilliant color labels fast and timely in the correct quantity. And cost-effectively every time.

Key benefits:

- ✓ High Speed - Print 1,000 (6 x 4") labels in less than 10 min.
- ✓ Brilliant color quality Image
- ✓ Large individual ink tanks
- ✓ Enhanced water-resistant inks (with VP550)
- ✓ Food safe & Environmentally friendly dye ink formula

Print all you need in one-step!

Brilliant color
images

We recommend the
VP550 (with Enhanced
water-resistant inks) for
product labels that are
exposed to moisture.
(e.g. chilled/refrigerated
food)



Fine text, barcode

Variable data

DESKTOP COLOR LABEL PRINTERS VP500 / VP550



TECHNICAL SPECIFICATIONS

	VP500	VP550
Print speed	6 and 8 ips (154 and 203 mm/second)	
Print resolution	1,600 x 1,600 dpi and 1,600 x 800 dpi	
Print width/Length	2" - 8.5" (51 - 216 mm) / Up to 40" (1.016 m)	
Comm ports	USB 2.0, 10/100Base-T, GPIO	
Inks	Five individual 200ml dye	Five Individual 200ml (Enhanced water resistant) dye
Time to first label	Less than 10 seconds	
Print modes	Roll-to-Cut, Roll-to-Roll, Print & Hold	
Barcode PQ	Grade B or better for • 1D barcode (Code 39) with 10 mils bar width • 2D barcode (PDF417) with 10 miles cell size	
Electrical	Universal power supply - 100-240 Vac, Peak current < 4A	
Temperature	Operation: 15 to 35°C at RH 20 -80%; Storage: -5 to 50°C	
Safety/ Compliant	FCC Part 15, Subpart B, Class A (US), cULus, IEC-62368-1, RCM, CCC, UKCA mark, Singapore Safety Mark	
User Interface	Embedded web server, Backlit LCD control panel in 9 languages, LED for warning and readiness indication	
Acoustics	Sound pressure level < 60 dBA	
Printer Driver	Windows™ 10 and above	
Supported Software	All major Windows based label and graphic design applications like Adobe Illustrator, Nicelabel, Bartender.	
Sensor type	Gap, Reflective sensor for black mark	
Media type	Roll (continuous, die-cut), fan-fold	
Media thickness	0.1 - 0.3 mm	
Roll diameter	8" (203 mm) OD with 3" (76 mm) core	
Supported media	Glossy, matte, synthetics	
Others	Rugged metal casing, automatic cutter, patented print & hold mechanism	
Warranty	1 year warranty or 5M inches, whichever earlier	

Label Printer comes with unwinder

Weight: 66 lbs (30kg)



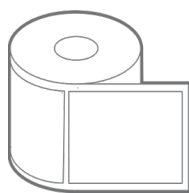
- High Speed Print
- Brilliant color quality Image
- Fine text, barcode and variable data



PRINTING YOUR OWN LABELS IS AS SIMPLE AS ABC



Design the label



Load the blank labelstock

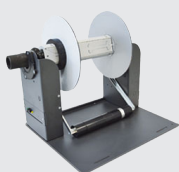


Print the label

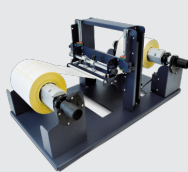


Paste on your product

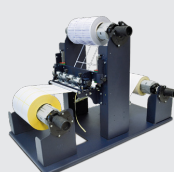
ACCESSORIES



Re-winder



Label Slitter



Matrix Remover & Slitter

