



Interactive Display

Flip 3

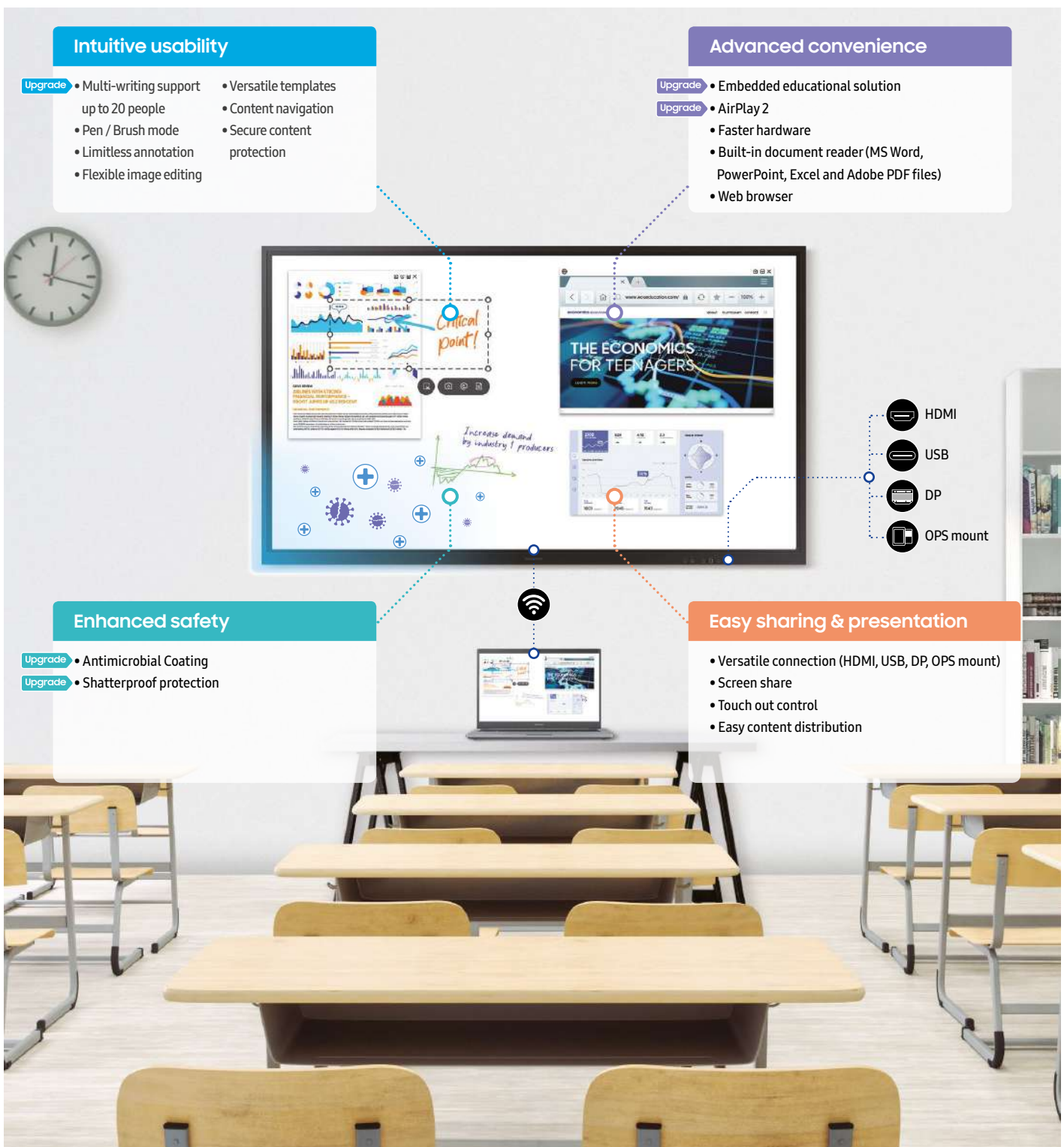
Imagine a new era of learning



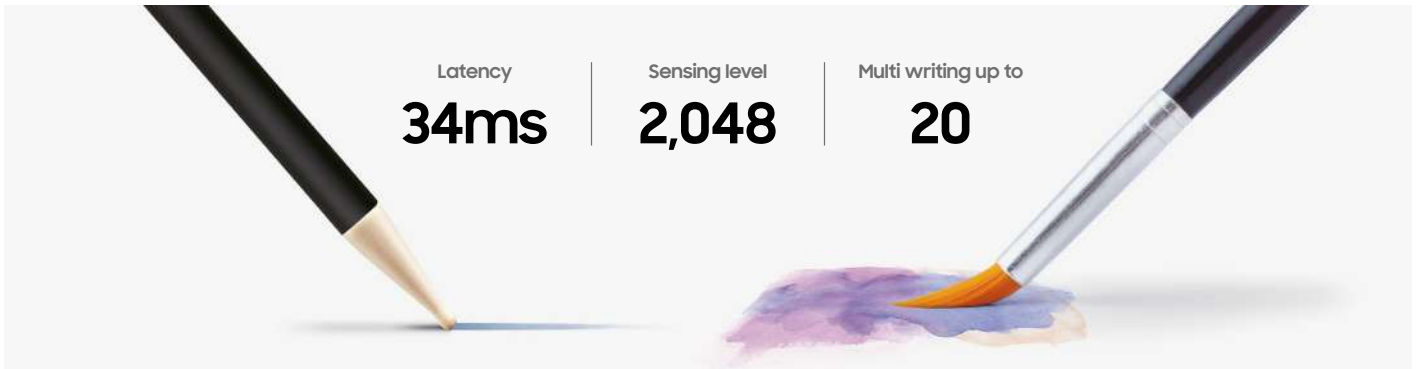
What is Samsung Flip 3?

Samsung Flip 3 is a powerful education solution that delivers interactive learning experiences. Developed specifically for the education market, Flip 3 provides educators with boundless resources and flexibility to create engaging lessons for a new era of learning. Flip 3 features immersive touchscreen and input technologies, enabling simultaneous multi-user writing to provide increased involvement while learning. To get the most out of Flip 3's powerful hardware, students and teachers can access both trusted, embedded content or preferred third-party software. Samsung's latest technology enables secure environments, while faster hardware increases student engagement. Power seamless learning experiences for everyone with Samsung Flip 3.

How does Samsung Flip 3 transform the classroom?

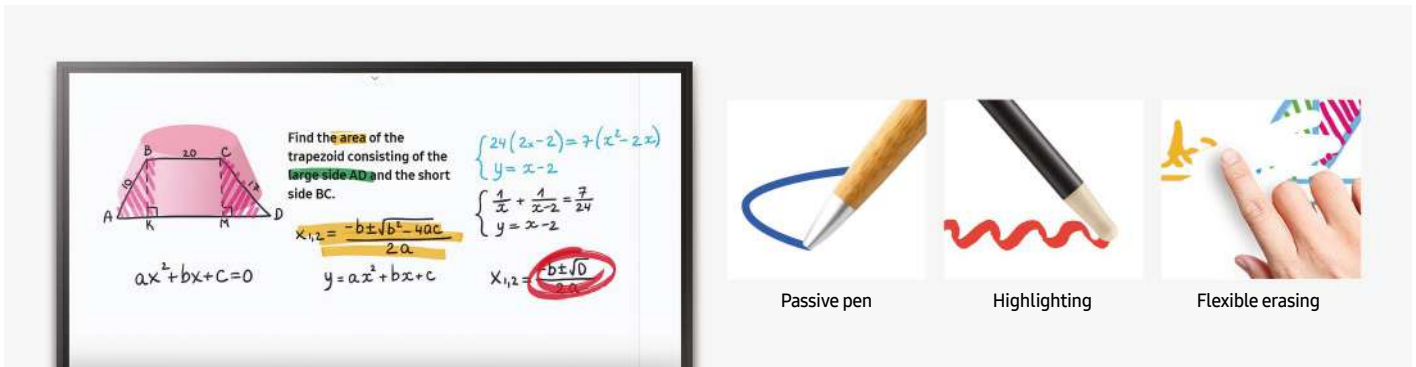


Intuitive usability



Unlock creativity with immersive touch technology [Upgrade](#)

Ideate and create with interactive touchscreen technology. With support for up to 20 inputs at once, sketch out ideas with swift drawing speed at just 34ms of latency or paint with real-world accuracy with 2,048 points of thickness built directly into the display.



Create and solve without limits

Interactions are intuitively built for problem solving and creating. Use any object near you as a stylus to bring your ideas to life. Flip 3 distinguishes between inputs from thin or thick objects to simulate on-screen writing and highlighting. Or simply erase content with your finger or palm.

Enhanced safety



Keep the screen clean [Upgrade](#)

Thanks to an Antimicrobial Coating, Samsung Flip 3 inhibits microbial growth to help protect against certain bacteria. This enables teachers and students to stay focused on what's on the screen with peace of mind.

* To perform its antibacterial function, this product has been treated with the biocidal substance Silver phosphate glass.

* Antibacterial property does not completely protect users against bacteria and provides no protection against viruses including Covid-19.

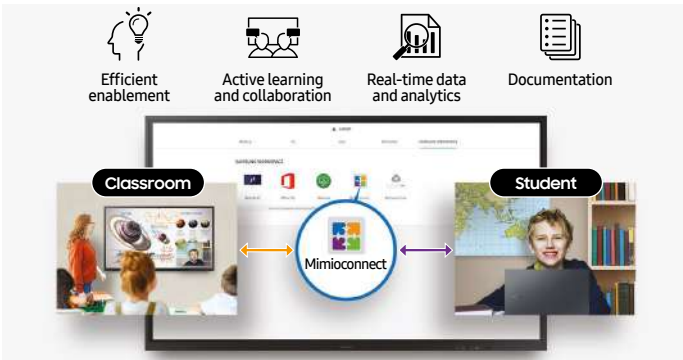
* Antimicrobial Coating is on surface of screen only and the effect may vary depending on conditions of use.* Antibacterial certification: UL2282 which is granted when the antibacterial effectiveness is more than 99%. (Test method(JIS Z 2801): after inoculation of 0.4cc of liquid with bacteria(Escherichia coli and Staphylococcus aureus) on specimen(5cm x 5cm), a sterilized film(4cm x 4cm) is adhered and left in a thermo-hygrostat with a relative humidity of 90% or more at 35°C for 24 hours, and then the efficiency of killing of the bacteria is measured / Test agency: KOTITI Testing & Research Institute)



Minimize accidents and risks [Upgrade](#)

Samsung understands that accidents happen. To protect students and educators from injury, the Flip 3 screen is wrapped in a proprietary shatterproof film, ensuring the screen stays intact in the event of a break.

Advanced convenience



Explore trusted educational solutions Upgrade

Samsung partnered closely with Boxlight, a leading US education solution, to deliver fully optimized and innovative education software* directly to Flip 3. Now, educators can access Boxlight's extensive catalog of versatile learning content for hassle-free lesson planning.

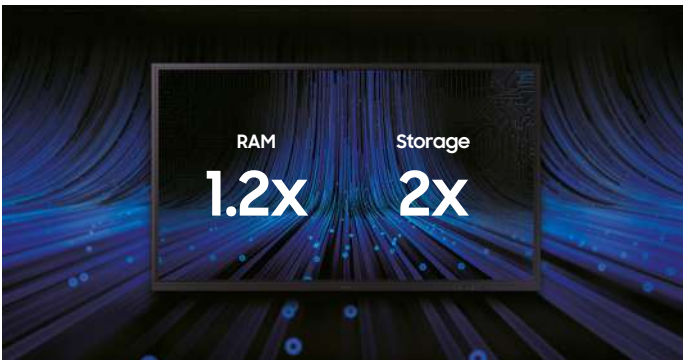
* Accessible through a web browser shortcut. Full app availability available through a future software update.
* Requires Boxlight registration and subscription to use this service.



Seamless Streaming with AirPlay 2 Upgrade

With AirPlay 2 built-in, it's easier than ever for teachers to add videos to their lesson plans. With seamless, wire-free setups, educators can stream videos from their personal Apple device to the classroom Flip 3 to maximize education time.

* This service may not be available at the time of purchase of this product and the availability may vary by region.
* Images simulated for illustration purpose only.
* Availability of the feature and Graphic User Interface (GUI) may vary by region. Check before use.



Faster operation for seamless interactions Upgrade

Power faster device interactions with less load time with 20% more memory (RAM). Or download and save more interactive content while enjoying consistent, reliable performance thanks to two times more storage capacity.

* When compared to Samsung Flip 2.



Conveniently source online content

Samsung Flip 3 now supports web browsing, allowing educators to access the internet directly through the display and source online educational material during their class, with no additional device needed. Now you can play videos or view sources without preloading in advance.

Easy sharing & presentation



Centralize lesson plans and school notifications

Use preferred third-party education solutions and connect to school information systems with the OPS (Open Pluggable Specification) mount*. Flip 3 is a centralized source for classroom learning and school-wide notifications such as principal announcements, weather alerts and fire drills.

* Sold separately.



Connect any device with ease

Flip 3 features multiple connectivity options, including USB, HDMI, DP, and OPS, as well as wireless screen sharing, to ensure educators can easily access their content from any device. Flip 3 automatically recognizes any plugged-in source, giving you control of your files and media quickly.

Specifications

Model		WM75A	WM85A		
Panel	Diagonal Size	75"	85"		
	Type	New edge, 60Hz	New Edge, 60Hz		
	Resolution	3,840 x 2,160(Landscape)	3,840 x 2,160 (Landscape)		
	Brightness(Typ.)	350cd/m2(Without glass)	350cd/m2 (without glass)		
	Display Color	16.7M	16.7M		
	Viewing Angle(H/V)	178 :178	178:178		
	Response Time(G-to-G)	6ms(Typ.)	6ms(Typ.)		
Sound	Speaker Type	Built in speaker(10W x 2CH)	Built in Speaker (10W x 2CH)		
Connectivity	Input	RGB	N/A	N/A	
		Video	HDMI 2(rear1, front1), DP1, OPS I/F	HDMI 2(Rear1, Front1), DP1, OPS I/F	
		Audio	N/A	N/A	
		USB	2(For SoC, rear/front), 2(For external 2.0 x1/3.0 x1(front))	2(For SoC, Rear/Front), 2 (for external 2.0 x1/3.0x1(Front))	
	Output	RGB	N/A	N/A	
		Video	HDMI 1(Screen share in front)	HDMI1 (Screen Share in Front)	
		Audio	1(Stereo mini jack)	1(Stereo Mini Jack)	
		Touch Out	Touch out 2(USB upstream type, front1, rear1)	Touch Out 2 (USB Upstream Type, Front1, Rear1)	
	Internal	Sensor	N/A	N/A	
	External	Control	Touch input RS232C thru stereo jack, RJ45(For MDC)	Touch Input RS232C thru stereo jack, RJ45(For MDC)	
Touch	BT/WiFi	Yes(Keyboard/Mouse)	Yes (Keyboard/Mouse)		
	Type	IR	IR		
	# of Drawing	4 drawing(Internal) 20 drawing(External)	4 drawing (Internal) 20 touch (External)		
	Touch Pen Type	Passive pen with magnet	Passive Pen with magnet		
	Object Recognition Range	2mm/4mm/8mm/50mm (Brush mode : Dynamic object recognition)	2mm/ 4mm / 8mm / 50mm (Brush Mode : Dynamic Object Recognition)		
	Haze	8%~12%	8%~12%		
	Thickness	3.2T	3.2T		
	Hardness	Heat semi-strengthened glass	Heat Semi-Strengthened Glass		
Power	Additional Film	AG, Hydrophobic coated PET	AG, Hydrophobic Coated PET		
	Type	Internal(Main 1ea, OPS1ea)	Internal (Main 1ea, OPS1ea)		
	Power Supply	AC 100~240V 50/60Hz	AC 100~240V 50/60Hz		
	Power Consumption	Max[W/h]	275	418 (OPS19V/3.7A)	
		Typical[W/h]	115	205	
		Rating[W/h]	250	380 (OPS19V/3.7A)	
		Stand-by[W/h]	0.5	0.5	
		BTU[W/h]	937.75	1,425.38 (OPS19V/3.7A)	
	Mechanical Spec	Dimension(mm) (W x H x D)	Set	1,721 x 1,019.3 x 75.2 mm	1942.8 x 1144.1 x 69.4 mm
			Package	1,905 x 1,182 x 287 mm	2136 x 1311 x 260 mm
Weight (kg)		Set	58.3 kg	74.5 kg	
		Package	71.7 kg	91.5 kg	
Color		Charcoal black	Charcoal Black		
VESA Mount		400 x 400	600 x 400		
Protection Glass		Yes	Yes		
Stand Type		Wall mount	Wall Mount		
Media Player Option Type		OPS mount support	OPS mount support		
Rotation		Landscape only	Landscape only		
Power Cable Length	3M/2.4M(US)	3M/2.4M(US)			
Operation	Accessory	Power cord, USB upstream cable(2ea), Pen(2ea, Black), Warranty/QSG	Power Cord, USB Upstream Cable(2ea), Pen(2ea, Black), Warranty/QSG		
	Operating Temperature	0°C~40°C	0°C~ 40°C		
	Humidity	10%~80%, non-condensing	10 ~ 80%, non-condensing		
Feature	Key	Flip app	Flip App		
	Orientation	Landscape	Landscape		
	Special	H/W	Touch overlay(IR), Front connectivity, OPS I/F support(w/OPS mount) Built in speaker (10W x 2), WiFi/BT module embedded	Touch Overlay(IR), Front Connectivity, OPS I/F Support(w/OPS mount) Built in Speaker (10W x 2), WiFi/BT Module Embedded	
		S/W	Flip S/W	Flip S/W	
		Platform	Muse-M(Tizen 6.0)	Muse-M (Tizen 6.0)	
	Internal Player (Embedded H/W)	Processor	CA72 quad(1.7GHz) 2MB L2	CA72 Quad(1.7GHz) 2MB L2	
		On-Chip Cache Memory	L2 : 2MB	L2 : 2MB	
		Clock Speed	1.7GHz CPU quad	1.7GHz CPU Quad	
		Main Memory Interface	LPDDR41.6GHz 64bit 3.0GB	LPDDR41.6GHz 64bit 3.0GB	
		Graphics	GPU : MaliG51 MP4@760MHz	GPU : MaliG51 MP4@760MHz	
Storage		16GB	16GB		
IO Ports		USB 2.0	USB 2.0		
Operating System	Tizen 6.0 : Samsung proprietary OS(VDLinux)	Tizen 6.0 : Samsung Proprietary OS(VDLinux)			
Certification	Security	802.1x(WPA2 enterprise) : EAP-TLS, EAP-TTLS, EAP-PEAP	802.1x(WPA2 Enterprise) : EAP-TLS, EAP-TTLS, EAP-PEAP		
Accessories	Included	Power cord, USB upstream cable(2ea), Pen(2ea, Black), Warranty/QSG	Power Cord, USB Upstream Cable(1ea), Pen(2ea, Black), Warranty/QSG		
	Optional	Wall Mount	WMN6575SE	WMN8200SF	
		OPS Mount	CY-PBRK200	CY-PBRK200	