

DENSO
DENSO WAVE

POCKET SIZE SCANNER

SE1
SERIES



JUST AIM AND READ

ULTIMATE SCANNING PERFORMANCE



POCKET SIZE SCANNER

SE1-QB / SE-1BB / SE1-BUB-C



Comfortable and easy grip even during long-time operation.

Comfortable trigger key emplacement.

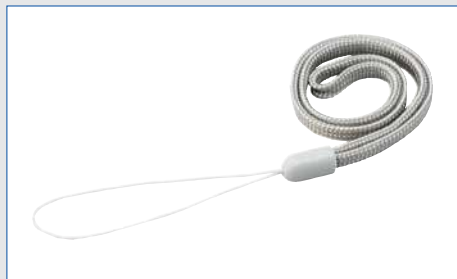
ACCESSORIES (SOLD SEPARATELY)



Single charger *
(CH-SE11)



Hand strap
(HSSE1)



Lanyard
(NSBHT-1300)



Silicon cover, black
(SCSE1-2)



Silicon cover, clear
(SCSE1-1)

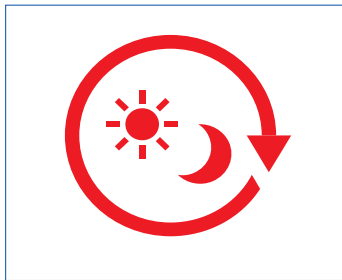


Bluetooth Communication Unit
(BA20-RU)



The lightweight scanner measures only 9.9 x 4.0 x 2.7 cm and weighs only 70 grammes. The device is designed to serve as the front end of mobile data capture system consisting of a scanner and host smartphone or tablet. The standard SE1 can read 1D or 2D Codes displayed on LCD screens of mobile devices or printed on paper. The SE1-BUB-C easily switches from barcode to RFID.

ADVANCED FEATURES



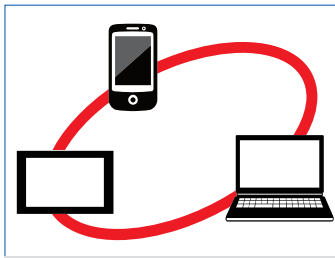
Long battery life

Energy-efficient design allows long operating time between battery changes. Even if it is out of power, the standard batteries can quickly be changed.



Scans LCD screens

Scanning codes displayed on a smartphone or other devices, as well as printed codes.



Compatible with iOS, Android™, Windows®

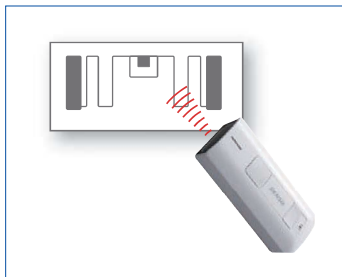
Easy connectability

The scanner can easily connect to Bluetooth® devices. Just scan a setup code.



Portability

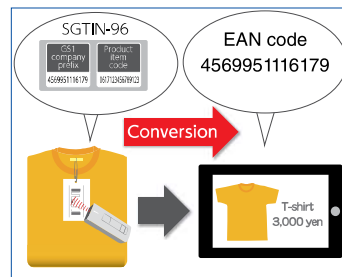
The compact pocket size means the scanner can be conveniently stored and carried all day long.



SE1-BUB-C One-to-one RFID tag processing^{*1}

The scanner prevents scanning of other nearby RFID tags and ensures smooth processing of each RFID tag. It offers unique reading satisfaction which is not possible for high-output RFID scanners made for wide-range and collective scanning.

^{*1} The optimal scanning distance for one-to-one RFID tag processing is about 3 cm (depends on the RFID tag).



^{*2} Only applies to RFID tags written in SGTIN-96 format.

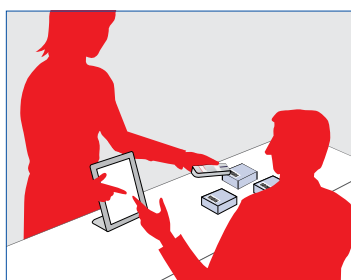
SE1-BUB-C Easily switches from barcodes to RFID

With its special function the scanner converts SGTIN-96 to EAN codes.^{*2} The application can be used without any modification.

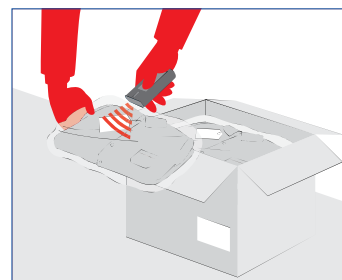
EMPOWERING EMPLOYEES WITH MOBILITY



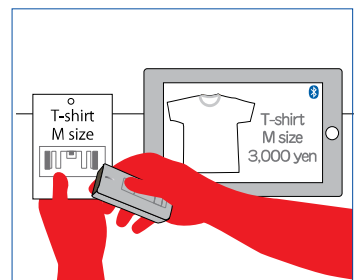
Simplifies POS use at stores.



Field staff can connect to a tablet or smartphone.



Inspection of in-coming and out-going goods.



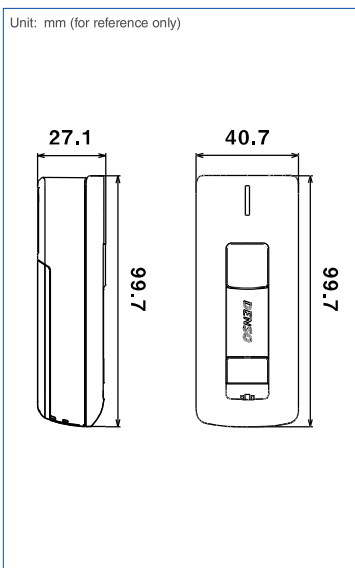
Issuing an RFID tag.

SE1 SERIES SPECIFICATION

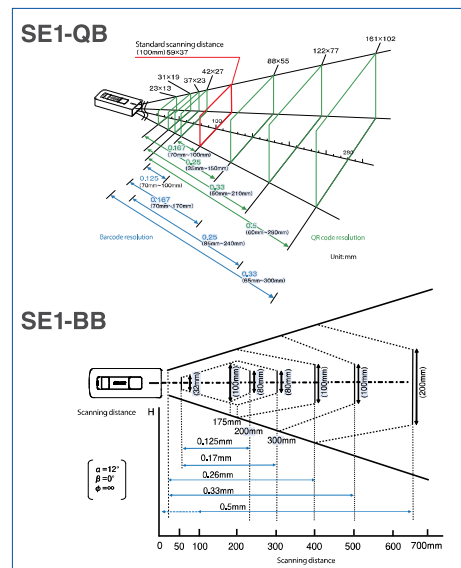
Model		2D Code Model	1D Code Model	RFID Model	
		SE1-QB	SE1-BB	SE1-BUB-C	
Scanner	Reading System	Area sensor		Advanced Scan Plus (CCD)	
	Readable codes	1D Codes	EAN-13/8 (JAN-13/8), UPC-A/E, UPC/EAN (with add-on), Interleaved 2 of 5 (ITF), CODABAR (NW-7), Standard 2 of 5 (STF), CODE39, CODE93, CODE128, GS1-128 (EAN-128), GS1 DataBar (RSS)	EAN-13/8 (JAN-13/8), UPC-A/E, UPC/EAN (with add-on), Interleaved 2 of 5 (ITF), CODABAR (NW-7), CODE32, CODE39, CODE93, CODE128, GS1-128 (EAN-128), GS1 DataBar (RSS), Standard 2 of 5 (STF), MSI, Plessey	EAN-13/8 (JAN-13/8), UPC-A/E, UPC/EAN (with add-on), Interleaved 2 of 5 (ITF), CODABAR (NW-7), CODE 32, CODE 39, CODE 93, CODE 128, GS 1-128 (EAN-128), MSI, Plessey, GS1 DataBar (RSS)
		2D Codes	QR Code [®] , Micro QR Code, iQR, SQRC [®] , PDF417, micro PDF417, DataMatrix (ECC200), Aztec, GS1 Composite (EAN, UCC Composite) Maxi Code	-	-
	Minimum resolution	1D Codes	0.125 mm		
		2D Codes	0.167 mm	-	-
	PCS value	0.3 or more			
	Slope angle / elevation angle	+ / - 50°			
	Scan confirmation	LED (blue, red), buzzer			Tri-colour LED (blue, red, green), buzzer
RFID	Readable and writable RF tag	-		Tags compatible with ISO/IEC 18000-63 (Class 1 Gen2)	
	Frequency	-		865.7 - 867.5 MHZ	
	Channel width/number of channels	-		600 kHz/4 ch	
	Transmission output	-		500 mW e.r.p.	
	Modulation method	-		PR-ASK	
	Transmission rate	-		40 kbps	
	Reading distance ^{*1}	-		30 mm	
Communication Interface	Interface	Bluetooth Ver. 2.1 + EDR-based Class 2			
	Profile	SPP, HID			
Power supply	Power supply	Alkaline AA battery x2 or AA Eneloop [®] battery x2		2 x Eneloop [®] rechargeable batteries	
	Charging method	-		The Eneloop [®] batteries can be charged inside or outside the main unit.	
	Operating time	50 hours ²	100 hours ²	12 hours ³	
Environmental requirements	Protection rating	IPX2			
	Drop resistance ^{*4}	1.2 m x 6 times drop on concrete floor			
	Operating temperature ^{*5}	-5° C to 50° C			
Weight (excl. batteries)		Approx. 60g		Approx. 70g	

*1: The scanning distance differs depending on the target tag. An AD-229r6 manufactured by Avery Dennison was used for evaluation. The scanning distance is for reference only and varies depending on actual conditions. 2: One scan every 5 seconds. 3: When an RFID tag is scanned every 5 seconds. 4: This is a test value at room temperature and is not guaranteed. 5: 0-40°C when charging batteries.

DIMENSIONS



SCANNING PERFORMANCE



Components

- Main unit
- Operation guide (provided with setup code menu)

Software

- Setting software (Scan Tune App) Software application to prepare parameter setting codes for SE1 series on PC.

DENSO WAVE EUROPE GmbH

Parsevalstr. 9 A
D-40468 Düsseldorf
+49 211 540 138 40
info@denso-wave.eu

For more information, please visit our website
www.denso-wave.eu

