

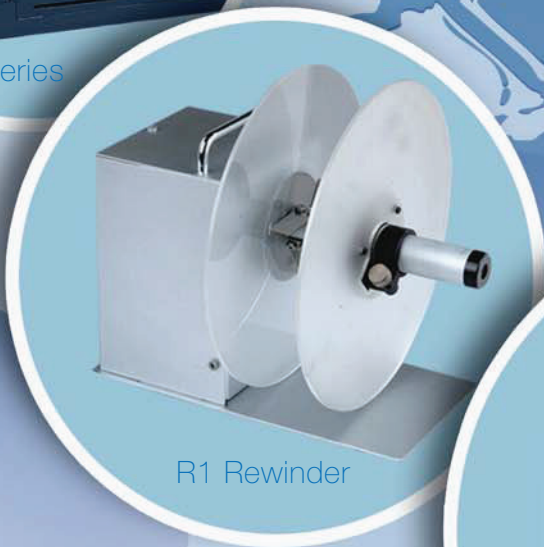
ADVANCED PERFORMANCE RUGGED DESIGN INNOVATIVE TECHNOLOGY



C Series



G Series



R1 Rewinder



TX Series

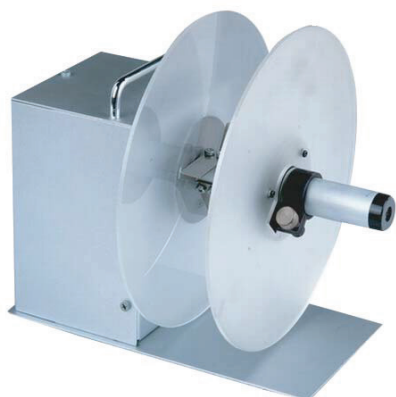
TX Series

Precision Built, Sturdy and Durable TX series industrial barcode Label printer

A true industrial printer, exceptionally strong and reliable, resulting in minimal adjustments and an extremely low failure rate. All metal construction; quality workmanship; a unique high strength aluminum core construction forming a sturdy and durable stationary printer platform; an advanced printhead offers long lasting durability.



Model	TX2	TX3
Printing method	Direct Thermal and Thermal Transfer	
Printing resolution	203 dpi (8 dots/mm)	300 dpi (11.8 dots/mm)
Printing Speed	Max. 8"/sec (203.2mm/s)	Max. 6"/sec (152.4mm/s)
Printing width	Max. 4.09" (104mm)	Max. 4.16" (105.7mm)
Printing Length	Max. 157" (4000mm)	Max. 79" (2000mm)
Memory	4MB FLASH ROM, 8MB SDRAM	
Media	Width: 4.56"(116mm) max., 0.79" (20mm) min Total thickness (including liner, if any): 0.0024" (0.06mm) ~ 0.01" (0.254mm) Supply Roll: OD8" (203.2mm) max; ID - 1.5" (38mm) min	
Barcode	1D barcode : Code 39, Code 93, Code 128/subset A, B, C, Codabar, Interleave 2 of 5, UPC A/E 2 and 5 add-on, EAN-13/8/128, UCC-128, Postnet, Plessey, HBIC, Telepen, FIM etc 2D barcode : PDF 417, Data-Matrix, QR Code and MaxiCode	
Ribbon	Max width: 4.65" (118mm) Max. length: 1968" (600m) Ink side: both In and Out Ribbon roll: OD3.3" (84mm) max.; ID1" (25.4mm) min	
Communication Interface	RS-232 serial; Centronics Parallel; USB, PS2	
Display Interface	2 lines Graphic	
Fonts	Five built-in ASCII fonts; User-downloadable true Type Fonts (optional)	
Graphics	BMP, PCX, JPG and etc	
Software	Postek printer language Windows driver (Win95/98/ME/XP/NT/2000) PosLabel printing software with ODBC Database function	
Physical	W11.3" (286mm) x D17.6" (448mm) x H11.0" (280mm) 15kgs	
Power rating	24VDC, 2.5A	
Power adaptor	Input 100-240VAC, 50-60 Hz Output 24VDC, 2.5A	
Operation Environment	Temperature: 40°F - 100°F (0°C - 40°C) Relative humidity: 5% - 85% non condensing	
Accessories	Label Cutter Label Dispenser kit Internal 100/10M Ethernet Interface card	



Postek R1

Maximum	Rewinding Speed 8"/sec (203.2mm/s)
Media Roll	Label Width: Max.: 120mm, Min.: 25mm OD 8" (203mm) ID 3" (76.2mm)
Dimensions	L262mm x W220mm x H232mm
Weight	2.5kgs
Power Rating	12VDC + 5%
Operation Environment	Temperature: 40°F - 100°F (0°C - 40°C) Relative humidity: 5% - 85% non condensing

Postek G



Postek G series barcode label printer is a new generation of printing equipment featuring high performance and multiple functions. It stands out with its modern appearance and excellent functionality utilizing a series of new technologies. The G series printout can be identified by its precision and clarity. The unit is rugged, durable and easily operated. The innovative CHT (convective heat transfer) design has overcome the thermal difficulties of extended printing that mini plastic printer's experience. Our G series can easily handle mass print jobs, whether in the office or other locations. Therefore, we are confident it will meet or exceed your multi directional printing needs, and showcase the value of our products.

Model	G2108	G2108D	G3106	G3106D
Printing Method	Direct Thermal and Thermal Transfer			
Printing Resolution	203 dpi (8 dots/mm)		300 dpi (11.8 dots/mm)	
Printing Speed	Standard – 1" - 4"/sec (option up to 6")		Standard – 1" - 3"/sec	
Printing Width	Max. 4.25" (108mm)		Max. 4.17" (106mm)	
Printing Length	0.20" - 40 " (5mm – 1016mm)			
Memory	2MB Flash ROM, 4MB SD RAM	4MB Flash ROM, 4MB SD RAM	2MB Flash ROM, 4MB SD RAM	4MB Flash ROM, 4MB SD RAM
Display Interface	LED indicator x 3	LCD display, 2 lines x 14 characters Stand-alone printing feature	LED indicator x 3	LCD display, 2 lines x 14 characters Stand-alone printing feature
Processor	32 bit embedded ARM CPU			
Media Sensor	Adjustable position sensor for die-cut label and tags; Transmissive and Reflective Sensor - Gap, Eye-mark and Hole media			
Media	Roll-feed, die-cut, continuous, fan-fold, tags, tickets in plain paper or thermal paper Width: 25mm - 110mm Supply Roll: OD - 6" (152mm); ID - 1" (25.4mm)			
Barcode	1D barcode : Code 39, Code 128, UCC/EAN-128, EAN-13/8, UPC-A/E 2&5 add on, Code 93, Interleave 2 of 5, Industrial 2 of 5, Matrix 2 of 5, Codabar and China Post 2D barcode : PDF 417, Data-Matrix, QR Code and MaxiCode			
Ribbon	Wax, Wax/Resin, Resin. Ribbon Roll: OD - 3" (76.2mm); ID - 1" (25.4mm) Max. Width: 110mm; Max. Length: 300M			
Communication Interface	RS-232 serial; Centronics Parallel; USB			
Fonts	Postek internal printing fonts All windows fonts			
Graphics	BMP, PCX, JPG and etc			
Software	Postek printer language Windows driver (Win95/98/ME/XP/NT/2000) PosLabel printing software with ODBC Database function			
Physical	W 256 x D 329 x H 200 mm 3.5kgs			
Power rating	24VDC, 2.5A			
Power adaptor	Input 100-240VAC, 50-60 Hz Output 24VDC, 2.5A			
Operation Environment	Temperature: 40° F - 100°F (0°C - 40°C) Relative humidity: 5% - 85% non condensing			
Accessories	Label Cutter Label Dispenser kit Internal 100/10M Ethernet Interface card			

C168



Key Feature

- Supports both Direct Thermal and Thermal Transfer printing
- 32 bit embedded ARM CPU
- Adjustable media sensor
- Standard RS-232 Serial and USB communication ports
- Large ribbon roll capacity: 300M

Model	C168
Printing method	Direct Thermal & Thermal Transfer
Printing resolution	203dpi (8dots/mm)
Printing speed	Max. 3ips (76.2mm/s)
Printing width	Max. 4.09" (104mm)
Printing length	Max. 20" (508mm)
Memory	2MB SDRAM, 2MB Flash ROM
Media	Roll-feed, die cut, continuous, fan-fold, tags, tickets in plain paper or thermal paper; Width: 110mm max. /27mm min Supply Roll: OD 4" (102mm) max., ID 1" (25.4mm) min. Thickness: 0.003" ~ 0.012" (0.06 ~ 0.15mm), including liner if applicable
Ribbon	Wax, Wax / Resin, Resin. Ribbon roll: OD 3" (76.2mm) max., ID 1" (25.4mm) core Max width: 110mm; Max length: 360m
Fonts	Postek internal printing fonts All windows fonts
Barcode Type	1D Barcode: Code 39, Code 93, Code 128/subset A,B,C, Codabar, Interleave 2 of 5, UPC A/E 2 and 5 add-on, EAN-13/8/128, UCC-128, Postnet, Plessey, HBIC, Telepen, FIM 2D Barcode: PDF 417, QR Code, Data Matrix
Media sensor	Reflective (Adjustable)
Interfaces	RS-232 serial, USB
Power adapter	Input: AC100 ~ 240V, 47 ~ 63Hz Output: DC24V, 2.0A
Weight	2.8kgs
Dimensions (mm)	W236 x D291 x H199
Operating environment	Temperature: 40°F – 100F (0°C - 40 °C)
Optional items	Cutter kit, peeler kit

- All specification are subject to change without notice.
- All company and /or product names are trademarks and/or registered trademarks of their respective owners.

Authorize Distributor:

CDG Computer Peripheral
and Supplies Ltd.

244 Soi Pattanakarn 53, Suanluang,
Suanluang, Bangkok 10250 Thailand
Tel : (66) 0-2322-9535, 0-2722-4040 Fax : (66) 0-2322-7990
www.cps.co.th

