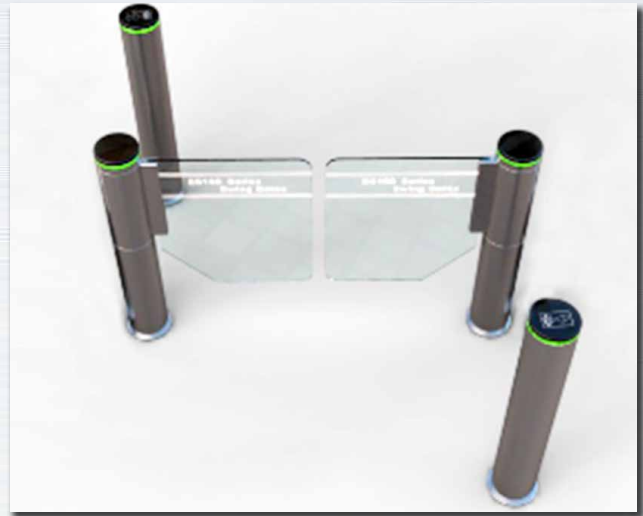


Pillar Swing Gate

- 1. DC Brushless motor, anti-hit against
- 2. RS485 Communication



1. Technical Parameters

1	Power	AC220C±10V,50/60HZ;
2	Operating Temperature	-45℃-60℃
3	Relative Humidity	≤95%, No Condensation
4	Passage Width	600mm—1000mm
5	Passing Speed	Normally open-50persons/min; Normally closed-50persons/min
6	Manufacturing Technique	CNC laser cutting
7	Motor	DC Brushless motor, 140W/24V
8	Gate Opening and Closing time	≤ 0.5S
9	Working environment	indoor and outdoor(added the rainshed)
10	Motor Operation Speed	1600R/Min
11	Communication Distance	≤1200M
12	Input Connection	+12V Level Signal or Pulse Wide>100ms Pulse Signal, Current>100ms
13	Communication Connection	RS485 Communication
14	Barrier Material	Acrylic glass, SS304 and so on
15	Material	Stainless steel 304,thickness is no less than 1.5mm
16	Running Life	5--8 Million(Continuous Opening and Closing Operation)
17	Protect Level	IP54
18	Size	168*168*985mm
19	Colour	SSB(US32D)-Stainless Steel Brushed / Powder Coating(Optional), or other Colour you like
20	Operation Place	Subway Station, Hoverport, Tourism Sports,Exhibition, Swimming Hall,Residence Area,Enterprise's Entrance and Exit Attendance,Gateway Guard,Charge Management,Special Access Control

2. Functions& Features

- 1) Rapid identification technique, available to identify accurately and efficiently the magnetic card, bar code card, ID card and IC card.
- 2) DC Brushless Motor, Maintenance Free
- 3) On-line or off –line mode(optional)
- 4) Real time trouble self-detect and alarm indication, ensuring system safe operation and facilitating maintenance and operation
- 5) With direction indication, guiding passenger to entry and exit.
- 6) Self automatic locking to prevent force passing without the card
- 7) Automatic counting and displaying number of passenger, facilitating observation and with a displaying total amount as high as 90,000
- 8) Light and sound alarm indication function, preventing illegal entry or irregular passing
- 9) Powerful on-line intelligent control mode, facilitating you:
 - A) To adjust the operation speed of the barrier according to the flow of passenger and improve the passing rate.
 - B) To set up operation mode for passage entry and exit.
 - C) To read card with multiple times, the special function meeting the application requirements of a particular site.
 - D) To set up the card reading with or without memory.
 - E) To select a reasonable normally open or close mode, to divert the flow of passengers effectively.
 - F) Setting function humanized for reset of over time passing.
- 10) The infrared sensing technique realizes real time monitor of passage, safe protection and tail-proof.
- 12) The processing mode in emergency or in special conditions.
- 13) Having standard input/output port, facilitating the integration of the system and the other equipment, to realize far end control management.
- 14) Super combination capability, with the combined application of products of different passage types and series, not affecting the system performance.
- 15) Strong system expanding capability, available to add new product at any time
- 16) Far end control management: function to far end control of barrier mode, meeting the special requirements of the users and the fire protection
- 17) Resetting automatically. after reading card ,if the passer didn't pass at set time, the system will cancel pass permission automatically, the administrator can set the passing time by himself.
- 18) Only one person can pass with one card, anti-tag after, anti-hit against19)

Installed in indoor or outdoor

- 20) Bi-directional passing or single way passing.
- 21) Ensure rapid,efficient and safe access control
- 22) No noise,long life

