



OpScan® 8 Scanner

Data collection tools to meet your evolving needs

The OpScan® 8 scanner is a powerful, high performance optical mark recognition (OMR) scanner designed for high-speed data input.

Activities once requiring hours of stacking and sorting can now be managed quickly and easily. Human error and time consuming re-sorts are virtually eliminated. And, with faster, more effective form handling, turn-around time shrinks and operators are freed for more productive activities.

Efficient Processing and Operator Productivity is Maximized

The scanner automatically separates scanned forms without requiring operator attention or interrupting data entry.

A transport printer produces messages on forms as they are scanned with no reduction of the throughput rate. Messages may be based on data read from that form, such as social security numbers, edit or batch codes, or test results.

Scanner Applications

Education

- Testing and assessment scoring
- Course scheduling
- Grade reporting
- Student, faculty & alumni surveys
- Admissions & enrollments
- Course/instructor evaluations

Business, Healthcare & Government

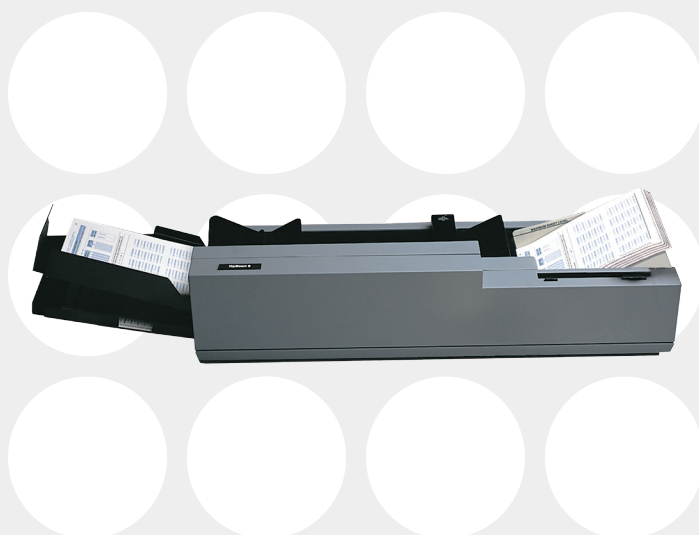
- Job applications & member enrollments
- Time & attendance and payroll deductions
- Training and course evaluations
- Customer, employee, and patient surveys
- Vehicle registration & incident reporting
- Patient encounter & health risk appraisals

OpScan 8 Scanner Features

The OpScan 8 scanner offers features to help ensure accuracy, speed, and ease of use.

Accuracy

- Two light sources for each read cell minimize the effect of folds and wrinkles in forms.



- Digital read head technology helps prevent undetected degradation of read head accuracy. OpScan 8 scanner alerts you when paper dust, eraser bits, etc. begin to build up and block read cells, or when a read cell degrades or fails.
- Precisely positioned read head wiping surfaces flatten wrinkled and folded forms and cleaning the read head.
- Select stacker permits the automatic sorting of forms which fail user specified edits during scanning. This increases speed and efficiency by being able to continue scanning when incorrectly completed forms are scanned.
- Sixteen level mark discrimination differentiates erasures and smudges from valid marks.
- Thickness detector ensures one sheet at a time is read.
- Sheet skew detection helps ensure proper registration while reading.

Speed

- A form throughput rate of up to 5,000 sheets per hour maximizes efficiency.
- A fixed, automatic feed hopper for 300 sheets eliminates continual reloading.

- Data transmission occurs as each row is scanned. This, coupled with Scantrons' proprietary data compression, results in higher actual scanner throughput.

Ease of Use

- Forty character, alphanumeric operator messages simplify operation.
- An open feed path provides sheet visibility at all times as well as easy access for sheet removal and transport cleaning.
- The OpScan 8 scanner accommodates both Mark Reflex® and Trans-Optic® forms ranging in size from 2.5" x 5" to 9" x 12" (64 x 127 mm to 229 x 305 mm); 60-100 lb. (90-148 g/m²) offset.
- Forms failing user-defined edits can be directed to a 100 sheet auxiliary output tray.
- Scanner self diagnostics quickly pinpoint any problem.

Options

The OpScan 8 scanner is available with optional features:

- Dual-side reflective read head for faster two sided form scanning.
- Ink read heads to scan both pen and pencil.
- Bar code attachment delivers immediate, automatic bar code identification.
- Download capability permits ASCII coded output, which simplifies implementation when not using a PC.
- USB 2.0 with optional adaptor.

Technical Specifications

Physical Description	<ul style="list-style-type: none"> • Length: 47.5" (1207 mm) • Height: 10.5" (267 mm) • Width: 13.25" (337 mm) • Weight: 52 lbs (23.59 kg)
Environment	<ul style="list-style-type: none"> • Operating Temperature: 60°-85° F (15.6°-29.4° C) • Humidity: 40% to 60% relative; non-condensating • Heat Dissipation: 900 BTUs per hour nominal
Power	<ul style="list-style-type: none"> • Standard: 115 VAC +/-10% single phase; 60 Hz +/-5%; US 3-prong plug; 8 ft. cable; requires 15 amp dedicated circuit, single phase • Option A: 50 Hz +/-5%; 100 or 110 VAC +/-10%; US 3-prong plug; 8 ft. cable; requires 15 amp dedicated circuit, single phase • Option B: 50 Hz +/-5%; 220 or 240 VAC +/-10%; US 3-prong plug; 8 ft. cable; requires 7.5 amp dedicated circuit, single phase
Communications	<ul style="list-style-type: none"> • Asynchronous: Protocol is defined to meet user's requirements; two female RS232 connections. • Communication Speed: From 1,200 to 115,200 baud. • Host Port for local or remote connection; cable at no charge when specified by the customer at time of scanner order. Auxiliary Port allows connection of a terminal printer or video display in series with the scanner; cable may be purchased from Scantron. • Compatibility: Sentry 3000® scanner emulation mode. • RS232 connection or USB 1.1 or 2.0 connection. • Keyspan USB Serial Adapter recommended, if needed.
Operation	<p>2.5" x 5" to 9" x 12" (64 x 127 mm to 229 x 305 mm); 60-100 lb. (90-148 g/m²) offset; uses both Mark Reflex and Trans-Optic forms. Form Input Capacity: Auto-feed 300 sheets. Output Stacker Capacity: 300 sheets main stacker; 100 sheets select stacker. Controls: Two push button programmable switches. Message Display: 40 character, alphanumeric, fluorescent. Scanning Rate: Model 36—3,600 sheets per hour; Model 50—5,000 sheets per hour (Actual scanning rate depends on quantity of data read from the form and the amount of processing done on that data while scanning). Programmable Interactive Transport Printer: Prints up to 63 characters per document; variable message printing based on scanned data.</p>
Components	<ul style="list-style-type: none"> • Read Head: 16 level mark discrimination; one or two-sided reflective read; Scantron .166" format. • Document Transport: Automatic feed; open design.
Software Interfaces	<ul style="list-style-type: none"> • The OpScan 8 scanner, is compatible with ScanTools® Plus. This software allows you to maintain files and define scannable forms— plus scan, edit, validate and display data. Interfacing with an OpScan scanner into your own custom software solution is done using the ScanTools Plus Link SDK and ScanTools Plus software. These tools are used by software programmers to implement scanning within their own software programs. For added value, the software converts files of scanned data into formats compatible with other commonly used packages, such as Microsoft® Access, Excel, Lotus® and SPSS® software.



GET THE RESULTS YOU NEED TO MAKE INFORMED BUSINESS DECISIONS TODAY!

For a free consultation to meet your organization's goals, call **800.722.6876** or visit us at **www.scantron.com** to learn more.

About Us

Scantron® provides technology to help you collect data you can use. We offer solutions and services, delivered with the quality you expect from decades of experience. Whether you need to work on paper, online, or anywhere in between, Scantron can meet you where you are and help you get to where you want to be.