



## OpScan® 6 Scanner

*Data collection tools to meet your evolving needs*

The OpScan® 6 optical mark recognition (OMR) scanner offers fast throughput and data transfer in a durable desktop model. It's flexible design allows for distributed or centralized processing.

The OpScan 6 scanner enhances productivity by collecting and transforming data into useable information quickly and efficiently. A full spectrum of organizations choose the OpScan 6 scanner for applications.

### Scanner Applications

#### Education

- Testing and assessment scoring
- Course scheduling
- Grade reporting
- Student, faculty & alumni surveys
- Admissions & enrollments
- Course/instructor evaluations

#### Business, Healthcare & Government

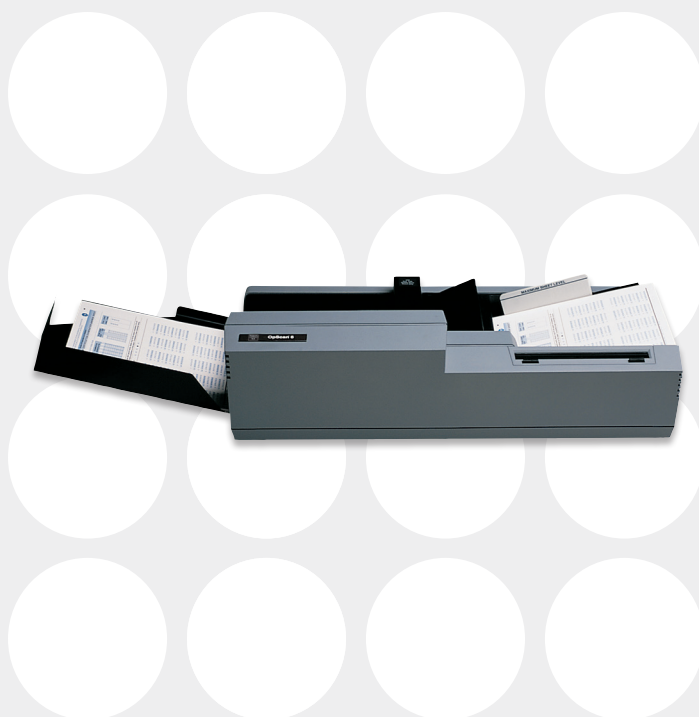
- Job applications & member enrollments
- Time & attendance and payroll deductions
- Training and course evaluations
- Customer, employee, and patient surveys
- Vehicle registration & incident reporting
- Patient encounter & health risk appraisals

### OpScan 6 Scanner Features

The OpScan 6 scanner offers features to help ensure accuracy, speed, and ease of use.

#### Accuracy

- Digital read head technology helps prevent undetected degradation of read head accuracy. The OpScan 6 scanner alerts you when paper dust, eraser bits, etc. begin to build up and block read cells, or when a read cell degrades or fails.
- Two light sources for each read cell minimize the effect of folds and wrinkles in forms.
- Precisely positioned read head wiping surfaces flatten wrinkled and folded forms and automatically clean the read head.



- Sixteen level mark discrimination differentiates erasures and smudges from valid marks.
- Sheet thickness detector helps ensure that one sheet at a time is read.
- Sheet skew detection helps ensure proper registration while reading.

#### Speed

- A form throughput rate of up to 5,000 sheets per hour maximizes efficiency.
- A fixed, automatic feed hopper for 300 sheets eliminates continual reloading.
- Data transmission occurs as each row is scanned. This, coupled with Scantrons' proprietary data compression, results in higher actual scanner throughput.

## Ease of Use

- Forty character, alphanumeric operator messages simplify operation.
- An open feed path provides sheet visibility at all times as well as easy access for sheet removal and transport cleaning.
- The OpScan 6 scanner accommodates both Mark Reflex® and Trans-Optic® forms ranging in size from 2.5" x 5" to 9" x 14" (64 x 127 mm to 229 x 356 mm); 60-100 lb. (90-148 g/m<sup>2</sup>) offset.
- Scanner self diagnostics quickly pinpoint any problem.

## Options

The OpScan 6 scanner is available with optional features:

- Dual-side reflective read head for faster two sided form scanning.
- Ink read heads to scan both pen and pencil.
- A programmable, interactive printer that prints information based on scanned data—such as error codes, alphanumeric messages, serial numbers, validation flags, and test scores—with no effect on the throughput rate.
- Bar code attachment delivers immediate, automatic bar code identification.
- Download capability permits ASCII coded output, which simplifies implementation when not using a PC.
- USB 2.0 with optional adaptor.

## Technical Specifications

Physical Description	<ul style="list-style-type: none"><li>• Length: 21.25" (540 mm)</li><li>• Width: 14.5" (369 mm)</li><li>• Height: 9" (230 mm)</li><li>• Weight: 17 lbs. (7.71 kg)</li></ul>
Environment	<ul style="list-style-type: none"><li>• Operating Temperature: 60°-85° F (15.6°-29.4° C)</li><li>• Humidity: 40% to 60% relative; non-condensating.</li><li>• Heat Dissipation: 900 BTUs per hour nominal</li></ul>
Power	<ul style="list-style-type: none"><li>• Standard: 115 VAC +/-10% single phase; 60 Hz +/-5%; US 3-prong plug; 8 ft. cable; requires 15 amp dedicated circuit, single phase</li><li>• Option A: 50 Hz +/-5%; 100 or 110 VAC +/-10%; US 3-prong plug; 8 ft. cable; requires 15 amp dedicated circuit, single phase</li><li>• Option B: 50 Hz +/-5%; 220 or 240 VAC +/-10%; US 3-prong plug; 8 ft. cable; requires 7.5 amp dedicated circuit, single phase</li></ul>
Communications	<ul style="list-style-type: none"><li>• Asynchronous: Protocol is defined to meet user's requirements; two female RS232 connections. Communication Speed: From 1,200 to 115,200 baud. Host Port: Local or remote connection; cable at no charge when specified by the customer at time of scanner order.</li><li>• Auxiliary Port: Allows connection of a terminal printer or video display in series with the scanner; cable may be purchased from Scantron</li><li>• Compatibility: Sentry 3000® scanner emulation mode. USB 2.0 with optional adaptor</li></ul>
Operation	2.5" x 5" to 9" x 14" (64 x 127 mm to 229 x 356 mm); 60-100 lb. (90-148 g/m <sup>2</sup> ) offset; uses both Mark Reflex and Trans-Optic forms. Form Input Capacity: Auto-feed 300 sheets. Output Stacker Capacity: 300 sheets main stacker. Controls: Two push button programmable switches. Message Display: 40 character, alphanumeric, fluorescent. Scanning Rate: Model 36—3,600 sheets per hour; Model 50—5,000 sheets per hour (Actual scanning rate depends on quantity of data read from the form and the amount of processing done on that data while scanning).
Components	<ul style="list-style-type: none"><li>• Read Head: 16 level mark discrimination; one or two sided reflective read; Scantron .166" format</li><li>• Form Transport: Automatic feed; open design</li></ul>
Software Interfaces	<ul style="list-style-type: none"><li>• The OpScan 6 scanner, is compatible with ScanTools® Plus. This software allows you to maintain files and define scannable forms—plus scan, edit, validate and display data. Interfacing with an OpScan scanner into your own custom software solution is done using the ScanTools Plus Link SDK and ScanTools Plus software. These tools are used by software programmers to implement scanning within their own software programs. For added value, the software converts files of scanned data into formats compatible with other commonly used packages, such as Microsoft® Access, Excel, Lotus® and SPSS® software.</li></ul>



**GET THE RESULTS YOU NEED  
TO MAKE INFORMED BUSINESS  
DECISIONS TODAY!**

For a free consultation to meet your organization's goals, call **800.722.6876** or visit us at **www.scantron.com** to learn more.

## About Us

Scantron® provides technology to help you collect data you can use. We offer solutions and services, delivered with the quality you expect from decades of experience. Whether you need to work on paper, online, or anywhere in between, Scantron can meet you where you are and help you get to where you want to be.