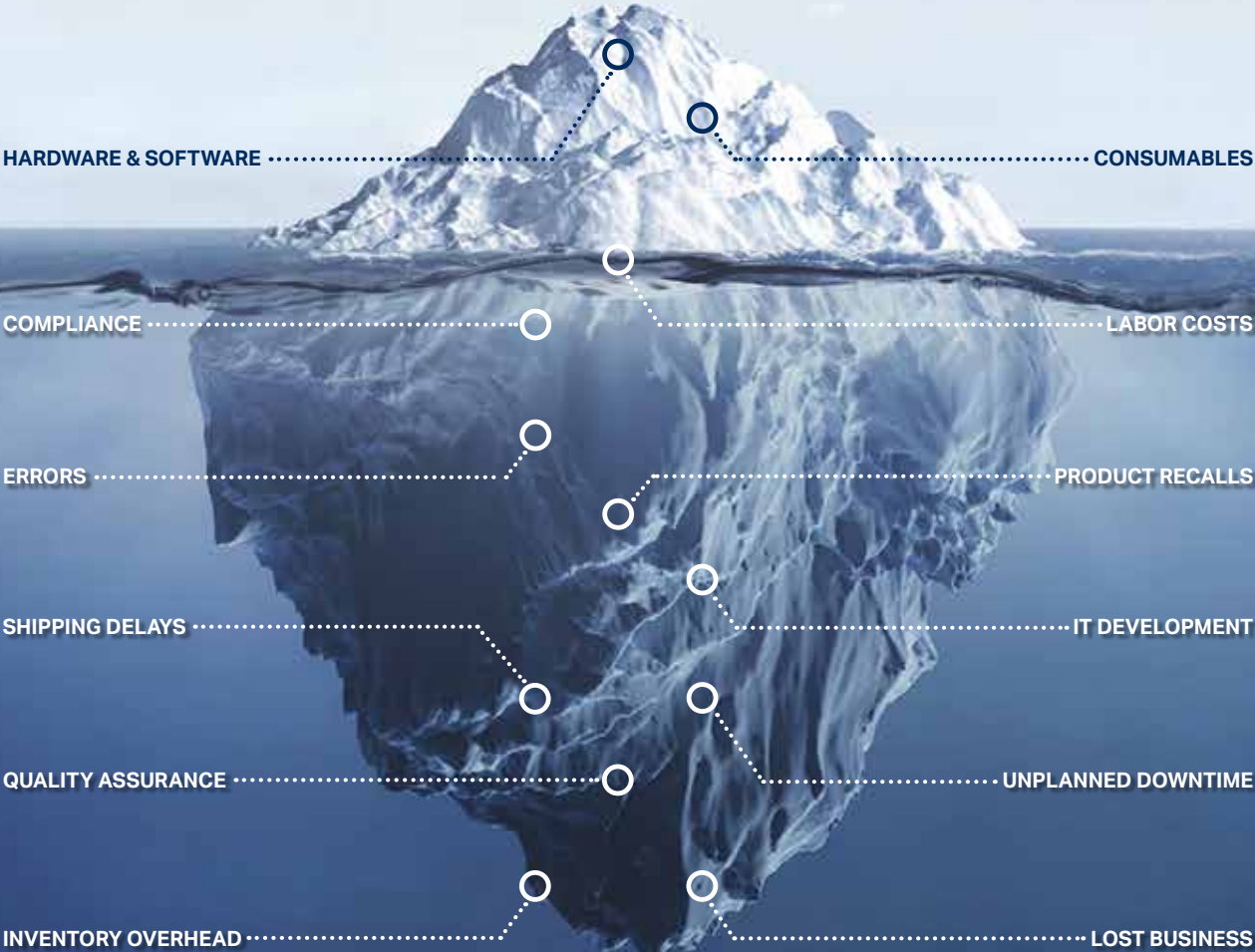




# Transform your labeling to turn hidden costs into visible savings

NiceLabel is a leading global developer of label design software and label management systems that help companies of all sizes improve the quality, speed and efficiency of their labeling, while reducing cost.



# Label Management System

**NEW**  
now also  
available as a  
SaaS/Cloud

**Manage the quality and security of labeling to decrease risks and hidden costs**

The NiceLabel Label Management System standardizes your entire label printing process into one platform. It includes everything you need to transform your labeling processes.

The result is a leaner, more agile operation that enables companies to respond more quickly to changing market conditions and requirements, get products to market faster and compete more effectively in the sectors where they do business.



## NiceLabel fundamentally transforms legacy approaches to labeling

### Challenges of legacy labeling

- ⊖ Disparate and fragmented applications
- ⊖ IT dependency for label design
- ⊖ Labor intensive quality assurance
- ⊖ Slow change management and deployment
- ⊖ High risk of printing errors

VS

### Benefits of our label management system

- ✔ Standardized all-in-one platform
- ✔ Agile design by business users
- ✔ Streamlined digitalized quality assurance
- ✔ Instant web deployment of standardized printing
- ✔ Accurate printing from a single source of truth

### REDUCE IT COSTS

- ✔ Empower your business users to design and approve labels
- ✔ Integrate with your business systems using pre-built connectors
- ✔ Minimize IT support and infrastructure investments

### REDUCE THE COST OF QUALITY CONTROL

- ✔ Digitally transform your quality assurance process with our document management system
- ✔ Eliminate the time your quality control people spend on paper-based processes
- ✔ Eliminate the cost of errors from legacy approaches

### FASTER TIME TO MARKET

- ✔ Make label change requests faster and improve your customer responsiveness
- ✔ Eliminate error and unplanned downtime to ship products faster

Our customers typically get ROI in less than **6 months** from direct cost savings alone



of our customers experienced cost savings due to error reduction



of our customers say they have reduced time-to-market



# The 4 elements of the Label Management System



## LABEL DESIGNER

The NiceLabel designer delivers a familiar Microsoft Word-like user experience that enables anyone to quickly design labels. It moves label design out of the IT department and into the hands of business users.

- ✓ Improved speed and flexibility in making label changes
- ✓ Streamlined compliance with regulatory requirements
- ✓ Faster global optimization and expansion into new markets
- ✓ Improved customer retention and new customer acquisition



## MANUAL PRINTING

With our web printing system, you can centrally deploy and manage all manual printing applications to multiple sites, locations and third-party suppliers, contractors and vendors with a single click.

- ✓ Instantly deploying consistent applications and labeling while reducing IT costs
- ✓ Extend standardized labeling to suppliers to avoid relabeling at goods receiving
- ✓ Immediately roll out label and application updates across all locations without IT assistance



## DOCUMENT MANAGEMENT SYSTEM

Think of it as SharePoint for labeling. Design, review, approve and control labeling from a web application without having to install software on workstations.

- ✓ Secure centralized storage eliminates duplication
- ✓ Automatic document versioning provides transparency
- ✓ Template consolidation leads to more efficient operations
- ✓ Unique indexing and search help reduce duplications
- ✓ Secure, electronic approval workflows prevent unauthorized changes
- ✓ Label comparison provides quality assurance
- ✓ Role-based access control ensures a secure labeling process
- ✓ Printer management and alerts help you avoid unplanned downtime



## INTEGRATED PRINTING SYSTEM

Integrate label printing with SAP or other business systems to increase label accuracy, printing efficiency and establish a 'single source of truth' for your labeling data.

- ✓ Ensure accuracy and efficiency by interfacing with the master data
- ✓ Build integrations without any coding with the intuitive graphical integration builder
- ✓ Integrate seamlessly and quickly with SAP using the NiceLabel ABAP package
- ✓ Triggers that accept data from any protocol enable integration with any existing system
- ✓ Filters that integrate with all modern and legacy data formats so you don't have to customize your existing business applications
- ✓ Actions for building business rules and workflows allow you to easily adapt business logic
- ✓ Optimize printing performance and efficiency with the next-generation 64-bit print server



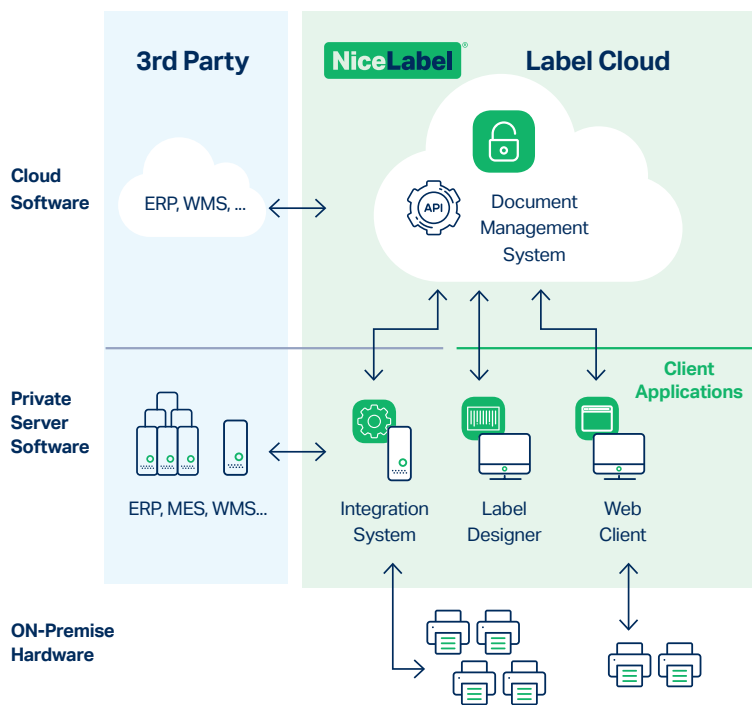
## Deployment options

### PERPETUAL / ON-PREMISE

LMS Enterprise is an on-premise edition of our label management system that is hosted on your own IT infrastructure.

### SAAS / CLOUD

Label Cloud is a public cloud edition of our label management system. It is multi-tenant and hosted in the Microsoft Azure cloud. It is our out-of-the-box service that requires no IT infrastructure, installation or IT support.



Label cloud system architecture

## Products and editions

On-premise	Cloud
> LMS Pro	> Essentials
> LMS Enterprise	> Business
	> Unlimited

[www.nicelabel.com/lms](http://www.nicelabel.com/lms)

## Professional Services Group

### Let us help you transform your labeling

We recognize that labeling is a critical part of your business, and that your labeling system needs to meet your business' unique system, business and regulatory requirements. NiceLabel's Professional Services Group (PSG) is a team of trained industry professionals who offer services tailored to your company and industry. PSG works with you to ensure your system is configured and implemented according to best practices. They are here to ensure a smooth, efficient transformation of your labeling.

### Software Maintenance Agreement

#### Avoid unplanned downtime with our Software Maintenance Agreement

The NiceLabel Software Maintenance Agreement (SMA) offers enhanced support and free software upgrades to NiceLabel customers. There are two levels of SMA support designed for customers of any size, and in any geographic location. Regardless of level, the NiceLabel SMA ensures that you have:

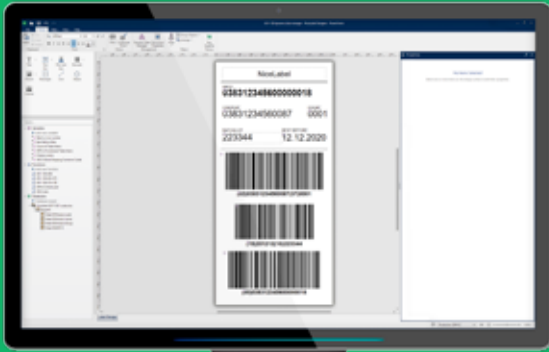
- ✓ Priority access to NiceLabel technical experts who will work with you to quickly address issues and minimize interruptions to your business.
- ✓ Free software upgrades, ensuring that you have the latest technology at your fingertips and a lower total cost of ownership.

[www.nicelabel.com/sma](http://www.nicelabel.com/sma)

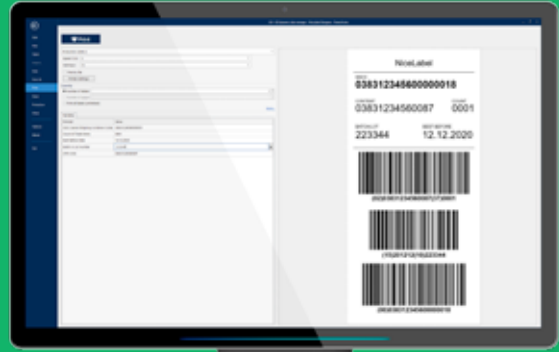
# Designer

## Quickly design and print barcode labels without IT help

NiceLabel Designers help you quickly design labels and create an efficient printing process. Quickly produce professional labels without making investments in training and coding.



Design interface



Operator printing interface

### DESIGN MODULE

Our label designer makes it easy for anyone to design labels. It's packed with graphical design features that enable users to create labels in minutes, no coding skills or training necessary.

- ✓ Design customer-specific or regulatory-compliant label templates in no time
- ✓ Familiar, Microsoft Word-like user experience requires minimum training and IT skills
- ✓ Pre-designed templates accelerate your design process
- ✓ Universal template can be used with any type of printer
- ✓ Support for multiple languages
- ✓ Fast and simple database connectivity (Excel, Access, SQL Server, Oracle and MySQL, OLE DB and ODBC)
- ✓ Built-in functions to automate creation of label information, such as serial numbers, expiry dates, etc.

### PRINT MODULE

Printing the right label template with the right data is business-critical. Our label printing module makes it easy to avoid human error and print accurate labels every time.

- ✓ Everything you need to print in one form
- ✓ Locked templates prevent errors
- ✓ Print preview enables the operator to check all information before printing
- ✓ Responsive form layout allows for greater flexibility

### Products and editions

	Designer Express	Designer Pro
Label Designer	> Basic	> Full featured
Database connectivity	> Excel, csv	> All databases
Manual printing	> Pre-defined printing forms	> Adaptable printing forms

[Download free trial](#)

[www.nicelabel.com/designer](http://www.nicelabel.com/designer)

[Watch videos](#)

# PowerForms

## Streamline your labeling and improve print productivity

NiceLabel's software suite helps you quickly design dynamic label templates and optimize the efficiency and accuracy of the printing process.

Eliminate printing errors by adapting the printing interface to the user and process or by integrating labeling with your existing applications and master data.



### APPLICATION BUILDER

Businesses can significantly reduce manual printing effort and achieve new levels of accuracy and control by using PowerForms' unmatched on-demand print capabilities. PowerForms' features empower business users to create custom printing applications, streamline complex printing processes and eliminate errors.

- ✓ Prevent printing errors
- ✓ Simplify the print process for non-skilled workers
- ✓ Streamline complex printing processes
- ✓ Maintain label integrity
- ✓ Minimize manual data entry
- ✓ Responsive, touchscreen-ready interface

### INTEGRATION / AUTOMATION

Automation empowers you to streamline complex printing processes, eliminate errors and improve print productivity. Integrate printing with existing business systems and hardware devices such as PLCs or weight scales.

- ✓ Integration without coding
- ✓ Works with all printers
- ✓ Data mapping
- ✓ Unmatched performance and reliability
- ✓ Business rules for maximum flexibility

## Products and editions

	PowerForms	PowerForms Suite
Label Designer	> Full featured	> Full featured
Database connectivity	> All databases	> All databases
Manual printing	> Application builder	> Application builder
Integrated printing		> Integration System



244 Soi Pattanakarn 53, Pattanakarn, Suanluang, Bangkok 10250 Thailand  
 Tel : (66) 0-2322-9535, 0-2722-4040 Fax : (66) 0-2322-7990  
 www.cps.co.th • www.facebook.com/cps.co.th

