

Model		2D Code Model	
		Wireless LAN connection BHT-M80-QW	Wireless LAN+Wireless WAN BHT-M80-QWG
Operating System		Android™ 10	
CPU		Qualcomm® SDM660 64 bit 2.20 GHz (Octa-Core)	
Memory	RAM	4 GB	
	Flash memory	64 GB	
Display	Screen size and resolution <sup>1</sup>	5.0-inch high-definition (720x1,280 dots)	
	Display device	Dot matrix liquid crystal display (color)	
Backlight		White LED	
Reading method		Area sensor	
Reader	Supported code	2D code	QR code®, Micro QR code, SQRC®, PDF417, Micro PDF417, Maxi code, Data Matrix (ECC200), and GS1 Composite
		Barcode	EAN-13/8 (JAN-13/8), UPC-A/E, UPC/EAN (with add-on), and Interleaved 2 of 5 (ITF), Codabar (NW-7), CODE39, CODE93, CODE128, GS1-128 (EAN-128), and Standard 2 of 5 (STF), GS1 DataBar (RSS)
	Minimum resolution	2D code	Supported
		Barcode	0.127 mm
Marker		Cross guide marker	
Confirmation of reading		Blue LED, speaker, and vibrator	
Key Entry	Number of keys	5 keys (including the power key) and 2 trigger keys	
Touch screen		Dragontrail® Pro <sup>3</sup> Capacitive multi-touch screen with glove touch support and water droplet false touch prevention	
Communication	Wireless LAN	Applicable standard	Compliant with IEEE802.11a/b/g/n/ac and MU-MIMO 2x2
		Frequency	5 GHz-band (W52, W53, W56 and W58) 2.4 GHz-band (1 to 13 channels *USA, Canada and Taiwan(1 to 11 channels))
		Security	Encryption : WEP (40/128), TKIP and AES WPA authentication : WPA, WPA2 and WPA3 User authentication : PSK, EAP-TLS, and PEAP
	Wireless WAN applicable standard	—	Supported: GSM/W-CDMA/LTE, VoLTE FDD-LTE (4G) - Bands 1, 2, 3, 4, 5, 7, 8, 12, 13, 17, 19, 20, 25, 26, 28 W-CDMA/UMTS/HSPA/HSPA+ (3G) - Bands 1, 2, 5, 6, 8, 19 GSM/GPRS/EDGE (2G) - Bands 850, 900, 1800, 1900MHz
	GPS	—	A-GPS/GLONASS/QZSS/BeiDou/Galileo
	Bluetooth® connection	Bluetooth® Ver5.1+EDR/LE(Supported Profile: RFCOMM/A2DP/AVCTP/ACDTP/GVDP/AVRCP/DUN/DI/HFP/HID/HSP/IOP/MAPI/OPP/BNEP/PAN/PBAP/SAP/SPP/HOGP/SCPP)	
Wired connection		USB Ver.2.0(USB Type-C)	
NFC <sup>4</sup>		ISO/IEC14443A&B, FeliCa, ISO/IEC15693(RFID)	
Camera	Rear	13-megapixel auto-focusing with a LED light	
	Front	5-megapixel auto-focusing	
Card Slot	Memory	microSD (SDHC and SDXC (up to128 GB)) SDHC Speed class 4 support	
	SIM	—	nanoSIMx2 DSDV (4G x 4G)
Microphone receiver		Attached <sup>5</sup>	
Speaker		90dB or more at 10 cm away (at 2.8kHz)	
Sensor		G-sensor, gyro sensor, proximity sensor, light intensity sensor, and geomagnetic sensor	
Power Supply	Main battery	Lithium-ion battery	
	Wireless charging	Supported	
	USB charging	Compliant with Qualcomm® Quick Charge™ 3.0	
	Operating time <sup>6</sup>	BT1S, BT1S-W(2900 mAh)	Approx. 14 hours <sup>9</sup>
BT1(4020 mAh)		Approx. 20 hours <sup>9</sup>	
BT1L(5800 mAh)		Approx. 29 hours <sup>9</sup>	
Environmental Performance	Operating temperature <sup>6</sup>	-20°C to 50°C	
	Operating humidity	5 to 95%RH (non-condensing and non-icing)	
	Protective class <sup>7</sup>	IP65 and IP67	
	Drop resistance <sup>7</sup>	Above concrete floor, 3.0 m, 60 times or more from 1.5 m	
Weight (including the battery)		Approx. 345 g (including BT1S), approx. 365 g (including BT1), and approx. 395 g (including BT1L)	

- \*1. The LCD display is manufactured with precise technology. The rate of non-defective pixels is 99.99% or more, which means that 0.01% or less pixels could be stuck or dead.
- \*2. Chargeable license is required.
- \*3. Dragontrail® Pro is a registered trademark of AGC Inc.
- \*4. Before using the NFC function, perform test reading sufficiently using the target NFC card.
- \*5. A headset or headphone can be connected through the USB Type-C cable. A USB Type-C-to-audio jack (3.5 mm) conversion cable is optional.
- \*6. 0°C to 40°C during charging.
- \*7. These are the values tested at a room temperature, and not guaranteed values.
- \*8. The operating time is a reference value at a room temperature and may differ depending on the operating conditions.
- \*9. This is a result of measurement based on the JEITA HT Standard Operation Mode G, and may change depending on the operating environment and system settings.



- Package includes :
- Terminal ● Hand strap (HSBHT-300/800) ● Operation manual ● User's Manual (Can be downloaded from the DENSO WAVE website.)
- Options
- Battery
    - 2900mAh battery : BT1S
    - 4020mAh battery : BT1
    - 5800mAh battery : BT1L
    - Wireless 2900mAh battery : BT1S-W
  - Charger
    - Wireless charger : CH-M80W<sup>\*1</sup>
    - 4-slot main unit charger : CH-M80-4<sup>\*1</sup>
    - 4-slot battery charger : CH-BT1-4<sup>\*1</sup>
    - USB power adaptor (Quick Charge™ 3.0 supported) : AD8
  - Communication unit
    - USB type :
      - With a spare battery charger : CU-M80U<sup>\*1</sup>
      - Without a spare battery charger : CU-M80UQ (Quick Charge™ 3.0 supported)<sup>\*1</sup>
    - LAN type
      - With a spare battery charger : CU-M80L<sup>\*1</sup>
  - Others
    - Stylus pen: PNBHT-1700
    - USB Type-C - Type-A conversion cable (1.5m): CB00-US1500/4A-4C
    - USB Type-C - Audio Jack conversion cable (3.5mm): CB00-US100/3-4C<sup>\*2</sup>

<sup>\*1</sup> AC adaptor sold separately  
<sup>\*2</sup> You also need the conversion cable to equip the BHT terminal with earphones and other devices.

**Equipped with Android™ 10**

Outstanding multifunctionality and unprecedented robustness



A larger screen makes for easy use in any environment, improving your new way of working.



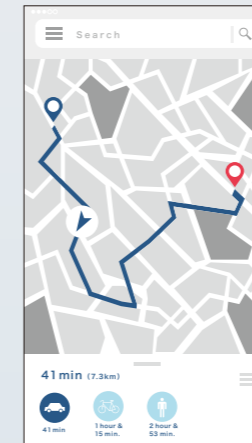
# CREATE YOUR NEW WORKSTYLE

NEW BHT®

## STYLE 01 | Logistics

**Navigation map displayed on the screen for direct and speedy delivery**

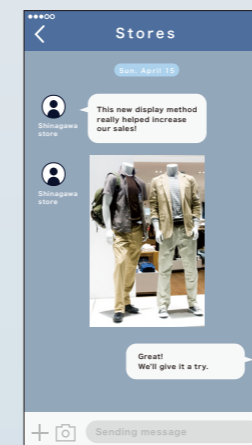
The navigation function provided by the BHT-M80 helps the driver quickly reach the destination to meet an urgent request for cargo pickup.



## STYLE 02 | Retailing

**Real-time sharing of sales information**

Stores can quickly share sales know-how, such as information about a product display strategy that helped boost sales, by making use of the chat app and camera.



## STYLE 03 | Manufacturing & logistics

**Prompt troubleshooting by video call**

On-site workers can promptly make an inquiry to service staff if they face a device problem, mitigating their stress and increase their productivity.



# Outstanding robustness.

## Greatest robustness in its product class\*

\* For smartphone-type barcode terminals for business use, as of October 2020, surveyed by the company

Highest-level resistance against 3.0-meter drops in its product class.  
Has passed the drop durability test of 1meter x 2,000,  
making it robust enough for daily use.

### Designed to provide high resistance against shocks

Uniquely designed to provide high resistance against drops on concrete floors with a light and rigid magnesium frame and an elastomer bumper to absorb shocks.

### Lasting clear visibility with a tempered glass screen

For the display, AGC's Dragontrail® Pro is adopted for resistance against scratching and to provide high visibility on a long-term basis.

### Able to withstand harsh environments

With IP67-compliant resistance against water and dust, the terminal can be used outdoors in rainy weather and in dust-filled factories alike with peace of mind.



# Scan faster, works harder.

Equipped with a new decode engine and high-density sensor, BHT-M80 provides outstanding scanning performance. The Qualcomm® SDM660, which is an industry top-level CPU (2.2GHz, Octa-Core CPU), enables high-speed processing. Comfort in scanning helps increase the efficiency of your daily operations.



## Just "trace" for serial scanning



By adopting the industry's top-level CPU, we have tripled the scanning speed compared with that of conventional products to about 30 labels per second. With the terminal, you do not need to scan the labels one by one. Instead, just trace the labels of items on the shelves and those of stacked items for serial scanning. Perform a full day's worth of inventory work in half the time, maximizing efficiency.

Conventional product About 30 labels per second

BHT-M80

Note: When labels specified by the company are used and are scanned sequentially at a fixed distance



For details of scanning, please refer to the page.

## Just "aim" for easy scanning



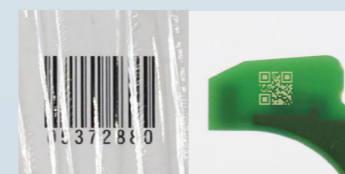
### Can easily scan the label (code) from a distance of 1meter.

We have adopted a high-density sensor so that codes can be scanned without fail even from a distance. Scan codes easily while holding the terminal in a comfortable position without the need to stand up or crouch down repeatedly. Codes can be scan easily even through glass.



### Needs no skills for scanning

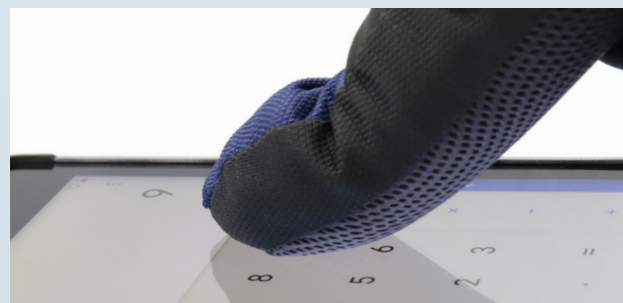
The laser marker, which provides high visibility even under the sun, eliminates the need to acquire skills to read labels covered with wrapping film and enables reading labels outdoors.



### Can scan even difficult-to-read labels

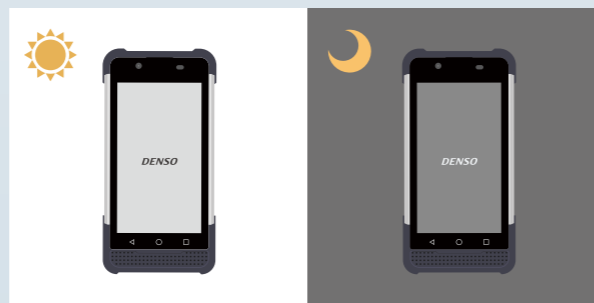
We have adopted a new decode engine and high-density sensor and designed the optimal angle for operability in a comfortable position with no specular reflection effect. As a result, even labels covered by wrapping film, blurred/stained/deformed labels, and DPM codes can be scanned by the terminal.

## User-friendly screen for greater work efficiency



### Operable with gloves on

The capacitive touch panel can be operated comfortably even while wearing gloves. Moreover, the sensitivity is automatically adjusted according to the thickness of the gloves, thereby substantially reducing the time required for setting.



### Reducing eye stress imposed on the user due to the performance of screen-based tasks, thereby increasing productivity

Equipped with a new function to automatically adjust the screen brightness according to the environment, thereby reducing the user's stress and helping increase their operational efficiency.



World's first mobile barcode terminal, the "BHT-1"

## Reliable quality developed by a leading automotive component supplier for its own manufacturing facilities

DENSO supplies automotive components to automakers across the world. In the 1970s, the company developed unique automatic recognition technology to increase efficiency at its own manufacturing facilities. DENSO's commitment to providing high-quality and high-reliability automotive components has been passed down to DENSO WAVE for the provision of the BHT series.

### Advanced OCR

With the newly adopted OCR engine, even blurred and stained labels and labels with different character heights can be scanned correctly.



### NFC supported

The scanner is equipped with an NFC antenna to read ID data.



Can scan data on driver's licenses and employee ID cards

# Stress-free and comfortable operation



## Providing more work method options by offering an alternative charging method

### Direct charging supported

Widely used Type-C cable supported, allowing recharging with mobile batteries. You can recharge and forward files from PC at once. Qualcomm® Quick Charge™ 3.0 adaptor is also supported for quick charging.

### Wireless charging supported.

With the custom wireless charger, you can prevent charging issues due to misaligned contacts. It can be used safely in rough and dusty environments such as a warehouse.

### Easy-to-replace battery

You can easily replace the battery, even if it runs out while you are using the terminal. We offer four types of batteries that can be used according to the usage.

\*The operating time is a reference value at a room temperature and may differ depending on the operating conditions. \*This is a result of measurement based on the JEITA HT Standard Operation Mode G, and may change depending on the operating environment and system.

### Detection of battery deterioration to prevent related incidents

The terminal detects battery deterioration and warns you when to replace.

# Full support from introduction to operation

DENSO WAVE provides opportunities for new work methods through its products, support for introduction and after-sale service.

## DENSO WAVE specialists support introduction and transition

Our special BHT team helps customers introduce the products by capitalizing on its long-accumulated experience, know-how and expertise in BHT products. DENSO WAVE team will make proposals, including options for software, to meet the customers' requests, such as "But we don't want to make any changes to our current operations," and "We want to increase our operational efficiency."

### [Examples of support provided by the BHT team]

- Support for selection of devices
  - Support for change of OS
  - Developing apps and making proposals to help customers solve their respective problems
  - Communication environment optimization service (addition cost)
- We can conduct a survey to select the most appropriate locations for access points and optimize channel design to propose the optimal wireless environment for customers.

## Extensive lineup of software products

We provide our own software products developed in-house to help customers increase their operational efficiency throughout the development, kitting, operation and maintenance processes. We can also develop new software products to help customers solve their respective problems. In addition, we introduce our partner companies' apps that can be used with BHT products.

### [Examples of software products that support work method reforms]

- Central management software that will change the work style of system managers [BHT DMS/BHT Remote]
- Security software suitable for your business terminals
- Software that helps you easily create and customize operational apps [BHT Booster]

For software details:  
BHT- M80 product page



## Substantial communication features

### High-speed 4G

4G LTE-compatible BHT allowing voice calls and high-speed data communication while working outdoors.



### Precise communication with Dual SIM

BHT-M80 supports use of two SIM cards depending on the situation. It enables you to use networks that are available for specific area like mountain regions. You can also separate networks between voice calls and high-speed data communication.



Quasi-Zenith Satellite System (QZSS) "Michibiki"

### Acquirable the highly precise location

GPS + satellite navigation system supported, allowing getting the highly precise location. Status of works can be managed precisely in real time. (Supported: A-GPS/GLONASS/QZSS/BeiDou/Galileo)



### Higher communication speed for higher operational efficiency

As the terminal is usable in an IEEE802.11 ac high-speed communication environment, you can comfortably conduct operations even with a heavy data load, including using a browser, uploading data to the server, and downloading software applications.

## After the start of operation

### ■ Speedy support for the solution of problems

For questions and problems related to daily operations, our engineers will provide prompt responses in each area across the world and our local customer service staff will deal with issues with speed and integrity.

### ■ 3-year warranty for hardware \*Prior reservation needed

We provide a 3-year free-of-charge post-purchase repair service. We offer a quick response both in Japan and across our bases in the world.

### ■ Ongoing OS support \*Prior reservation needed

For Android™, even after Google support for the version indicated on the BHT is ended, we will continue to provide security patches that we have developed ourselves as part of our OS support service to customers.