



Computer Peripheral
and Supplies Ltd.

axicon

THE BARCODE EXPERTS



Features

ISO/IEC compliant
verification

Linear and 2D barcodes

Automatic variable
aperture

USB powered

AI data content checker

Axicon 15000

Linear and 2D barcode verifier

The Axicon 15000 barcode verifier is designed to read both linear and two-dimensional matrix barcodes. It can verify linear barcodes with a maximum length of 51 mm, and 2D barcodes with a maximum size of 51 mm x 31 mm (2.0" x 1.25"). All the symbols captured in the field of view are verified individually, and the user simply selects each barcode in turn to see the specific results. Both linear and matrix barcodes can be assessed at the same time. The verification of linear symbols automatically uses ten samples throughout the height of the barcode, so it is faster than using conventional linear barcode verifiers.

Typical applications

Two-dimensional matrix barcodes such as GS1 DataMatrix used on healthcare products, and QR Codes used for marketing purposes to encode product website addresses. Retail point-of-sale barcodes (all the EAN/UPC options) can also be verified.

Traceability features

Verification results, including an image of the barcode, can be saved to file. These files can be used for remote diagnosis and can be printed. The Axicon software provides for automatic saving of all these files if this is required for ISO 9001 traceability requirements.

About Axicon

Axicon Auto ID is a world leader in barcode verification, having developed and manufactured our own range of verifiers since 1989. Axicon barcode verifiers are used to measure the quality of linear and matrix barcodes, on all levels of product packaging.



Industry
Partner

Software Specifications

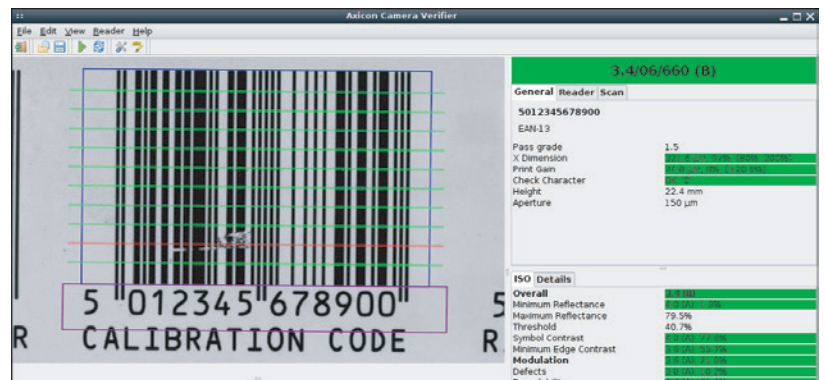
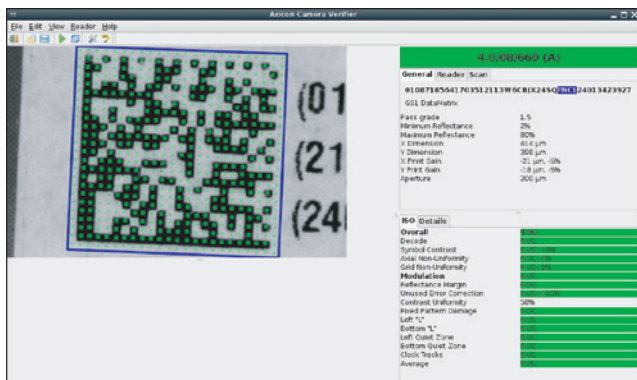
Symbologies verified	EAN-8, EAN-13, UPC-A, UPC-E, ITF-14, GS1-128, GS1 DataMatrix, GS1 QR Code, Data Matrix, QR Code, Code 39, Code 93, Code 128, Codabar, ITF, MSI Plessey.
Analysis performed on linear symbologies	Full ISO/IEC 15416 parameter analysis average bar gain, check digit validation, data length, nominal bar width (x-dimension), symbol structure, quiet zone validation, wide to narrow ratio.
Analysis performed on 2D symbologies	Full ISO/IEC 15415 parameter analysis (parameters vary according to the symbology). Nominal bar width (x-dimension), average bar gain.
Data analysis	Data content checker (for Application Identifiers with GS1-128, GS1 DataBar, GS1 DataMatrix and GS1 QR Codes), and other symbols via plugins.
Logging	Scan saving and loading - stores complete details of scan file data. Allows for remote diagnostics and also for increased traceability. Autosaving of scans for audit trail purposes.
Multi-language	English, French, Spanish, Danish, Dutch, Slovenian, German. Other languages on request

Hardware Specifications

Dimensions	250 x 140 x 130 mm (9.8"x 5.5" x 5.1") - Maximum image size 51mm x 31mm (2.0" x 1.25")
Weight	1.36 Kg (48 oz)
Construction	Aluminium, CCD sensor, LED illumination
Power consumption	Current draw 360mA - supplied from USB host.
Aperture reference numbers	05, 06, 08, 10, 16 and 20. The software automatically identifies the symbology and its nominal bar width (x-dimension) and adjusts the aperture size to comply with the symbology specifications and relevant ISO/IEC standard.
Wavelength of light	660 nm

General Information

Report generation	A report can be produced via the in-built report generator, and saved or printed. The report generator can create reports in .pdf, .html, .txt, .csv or other formats (Append facilities are available for any format which supports this). The report generator is customisable via scripts and templates so reports can be tailored to individual requirements.
System requirements	PC running any currently supported version of Windows - USB 2.0
Environmental	Operating temperature: 10° to 40°C - Storage temperature: -20° to 70°C Relative humidity: 25% to 80% @ 40°C non-condensing
Regulatory approvals	CE certified, RoHS compliant. Meets ISO/IEC 15415, ISO/IEC15416, ISO/IEC 15426-1 and ISO/IEC 15426-2 standards. Has all the features necessary to meet the requirements of 21 CFR part 11.
Warranty	Two years parts and labour - return to bench.



All trademarks are acknowledged as belonging to their respective companies. As Axicon continually improves its products, the specifications and features explained in this document are subject to change without notice.

