

Open structure with easy maintenance design;

Two sensors in paper feeding path;

90° and 180° paper feeding direction;

Semi-automatic paper loading design ;

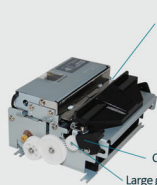
Two feed buttons: paper forward feeding and backward feeding; Various installation position

250mm/sec high print speed ;

Epson ESC/POS and Star commands compatible ;

Paper width 83mm, 80mm, 76mm, 70mm, 58mm optional;

Auto cutter life 1,500,000 times, mechanism life 150k;



Auto cutter(1,500,000cuts)

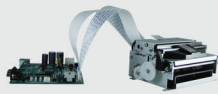
Attention: If cutter locked, please pull the cutter open level and then press the feed button, cutter will reset, no need to restart the printer.

Cutter open level

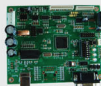
Large gear



Front view



LP-2003E



Mainboard



LP-2003U
View with bracket

Application Field:

Information query terminals, KIOSK terminals, ATM/CRS, computerized lottery ticket machine, queuing machine, POS terminals, parking meters, self-service refueling machine.

Print method	Direct thermal line printing	FONT	Standard ASCII fonts(24*24 dot), Compressed ASCII fonts(9*17 dot) Simplified Chinese, traditional Chinese, Japanese, Korean fonts(24*24 dot) GB18030 and GB2312 standard Chinese fonts optional
Dot density	640 dots/line	Character	1~8 class enlarged in both horizontal and vertical direction
Interface	Parallel+Serial+USB	Data buffer	12K bytes
Print speed	250mm/sec max.	NV Flash buffer	64K bytes
Print width	80mm max.	Power supply	DC24V/2A
Paper diameter	254mm max.	Barcode type	UPC-A, UPC-E, EAN-8, EAN-13, CODE39, CODE93, CODABAR, CODE128, JTF
Paper thickness	0.06~0.10mm	Sensing	Printer head temperature sensing: thermal resistor Printer head position sensing: micro switch
Paper type	Continuous	Driver	Windows 9X, ME, 2000, 2003, NT, XP, Vista and 7, Linux Compatible with EPSON, SAMSUNG
Work environment	5~45°C, 20~90%RH(40°C)		
Storage environment	-40~60°C, 20%~93%RH(40°C)		
Dimension	121.4*88.5*57.5mm (W*D*H)		

Authorized Distributor



Computer Peripheral
and Supplies Ltd.

244 Soi Pattanakarn 53, Suanluang, Suanluang, Bangkok 10250 Thailand
Tel : (66) 0-2322-9535, 0-2722-4040 Fax : (66) 0-2322-7990
www.cps.co.th • www.facebook.com/cps.co.th

