

9951A/Y Lightwave Test Platform



9951A



9951Y

Ceyear Technologies Co., Ltd

F.E.S. Co., Ltd.

1000/24, P.B. Tower, 8 floor, Sukhumvit 71 Rd., North Klongtan, Wattana, Bangkok 10110
 TEL: 02-064-4050 or 02-064-4051 | FAX: 02-010-4262 | Email: info@fesupply.com
 www.fesupply.com

Line Official



Facebook



Product Overview

The 9951A/Y lightwave test platform is a modular, multi-channel test instrument developed for users in the optoelectronics industry. Different modules such as polarization scrambler can realize optical power measurement, optical power attenuation, optical path switching, optical polarization scramble and other functions. Each module is pluggable and interchangeable, which is convenient to quickly build a test system. The product has a wealth of external communication interfaces, including LAN, RS232C and USB interfaces, of which the LAN interface supports a maximum of 64 clients to access together, which can meet the needs of various program control and data communication.

By matching various high-performance optoelectronic measurement modules, the 9951A/Y lightwave test platform can flexibly, efficiently and reliably complete test tasks. Improve user test efficiency and reduce test cost.

Main Features

- **Optical power meter function**
- **Optical attenuator function**
- **Optical switch function**
- **Light scrambler function**
- **Remote control function**
- **Multi-client access function**
- **High-definition touch screen display control (9951A)**

Module automatic identification function

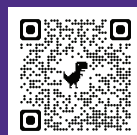
After the host platform is powered on, it will automatically identify the module and display the module information to quickly build the system.

Optical power meter function

The operating wavelength range of the optical power meter module is 800nm to 1700nm. The module has been calibrated in the whole band. By matching different types of optical power meter modules, the optical power test with a large dynamic range of -90dBm to +26dBm can be realized.

Optical attenuator function

The optical attenuator module has both single-mode and multi-mode test modules, which can control the optical power attenuation and achieve a wide range of power



attenuation from 0dB to 65dB.

Optical switch function

The optical switch has a variety of different channel modules, which can realize fast switching of the optical path.

Light scrambler function

The light scrambling module can disrupt the polarization state of light, so that the polarized light after scrambling evenly covers the entire Bonga sphere, and the degree of polarization after scrambling is less than or equal to 5%.

Remote control function

The host platform has two program control interfaces: network port and serial port (only 9951A), and provides remote control instruction set.

Multi-client access capability

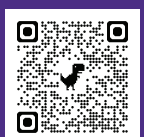
Through network port control, the system supports multi-client access function, allowing up to 64 clients to access together. Combined with this function, large-scale production test systems such as optical components and optical modules can be built.

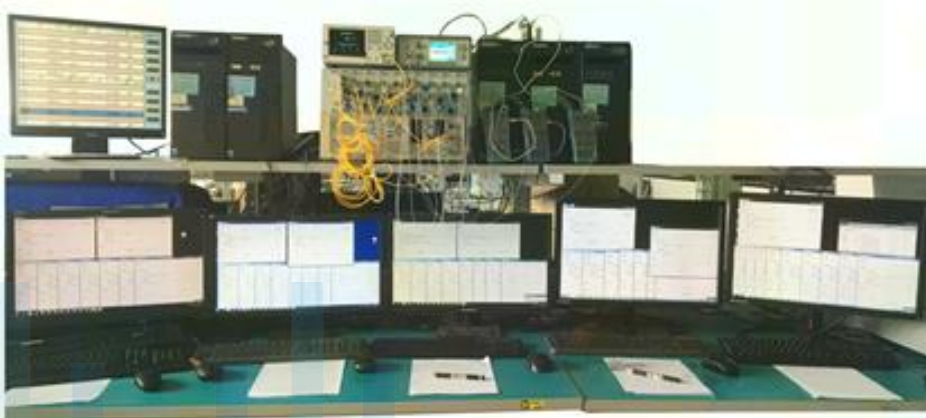
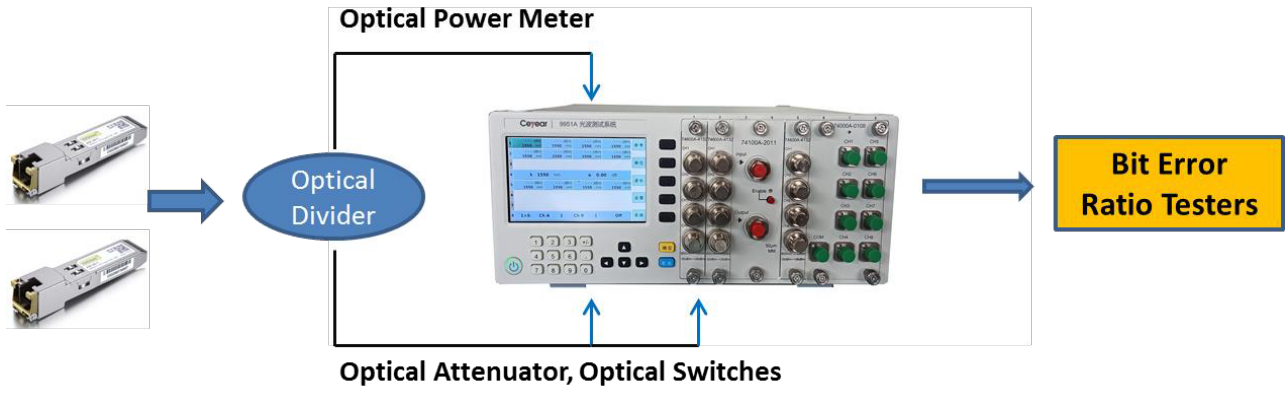
HD touch screen display control

The 9951A platform is equipped with a 4.3-inch high-definition touch screen, with a friendly convenient and efficient interface.

Typical Applications

The products can be used in the research and development, production and testing of optical passive devices, optical active devices, optical modules and optical components. For example: select configuration, optical attenuator, optical power meter module module and the optical switch module and so on light module production test system, using the system of remote control and multiple clients access function module light production test system, the formation of multiple optical module testing lines, saving space, multiple clients, the machine can remote monitoring test data, to facilitate intelligent production line test.





Technical Specifications

Lightwave test platform		
Model	9951A	9951Y
Module slots	8	18
Interface	USB, LAN, RS232	USB, LAN
Display mode	Touch screen	External VGA Display
Operating mode	External keyboard and mouse local operation or remote control	Local key operation or remote control
Power onsumption	≤ 65W	≤ 65W
Power supply	AC220V±10%, 50Hz±5%	AC220V±10%, 50Hz±5%
Size(H*W*D)	319.5mm×132.5mm×350mm	426mm×132.5mm×400mm

Optical power meter module		
Model	74600A-4132	74600A-4133
Channel	4	4
Detector type	InGaAs	InGaAs
Wavelength range	800nm ~ 1700nm	800nm ~ 1700nm
Power range	-50dBm ~ +26dBm	-80dBm ~ +10dBm
Accuracy	±0.25dB	±0.25dB
Linearity	±0.02dB (-30dBm ~ 10dBm)	±0.02dB (-55dBm ~ 0dBm)
Amplitude resolution	0.001dB	0.001dB
Wavelength resolution	0.1nm	0.1nm
Size(H*W*D)	20.3mm×124mm×305mm (1 slot)	20.3mm×124mm×305mm (1 slot)

Optical attenuatormodule		
Model	74100A-1011	74100A-2011
Fiber type	Single mode (SM)	Multimode (MM)
Wavelength range	1250nm ~ 1650nm	700nm ~ 1350nm
Attenuation range	0dB ~ 65dB	0dB ~ 65dB
Insertion loss	Typical 1.0dB, Max. 1.5dB	Typical 1.3dB, Max. 2.0dB
Resolution	0.001dB	0.001dB
Accuracy	±0.15dB	±0.3dB
Attenuation linearity	±0.1dB	±0.2dB
Attenuation repeatability	±0.01dB	±0.05dB
Maximum output power	23dBm	23dBm
Regulating speed	> 15dB/s	> 15dB/s
Light brake function	Yes	Yes
Size(H*W*D)	40.6mm×124mm×305mm (2 slots)	40.6mm×124mm×305mm (2 slots)



Optical switch module						
Model	74000A-0102	74000A-0104	74000A-0108	74000A-0116	74000A-0124	74000A-0132
Optical light type	1*2	1*4	1*8	1*16	1*24	1*32
Wavelength	1260nm ~ 1650nm					
Insertion loss	1310nm	1.2dB	1.2dB	1.2dB	1.5dB	1.5dB
	1550nm	1.0dB	1.0dB	1.0dB	1.2dB	1.2dB
Repeatability	±0.02dB	±0.02dB	±0.02dB	±0.05dB	±0.05dB	±0.05dB
Switch speed	≤ 20ms(Adjacent Channel Sequence Switch)					
Maximum input power	27dBm					
Switching lifetime	≥ 10 ⁷					
Size(H*W*D)	20.3mm×124mm×305mm (1 slot)	40.6mm×124mm×305mm (2 slots)	61.0mm×124mm×305mm (3 slots)	101.5mm×124mm×305mm m (5 slots)	142.2mm×124mm×305mm m (7 slots)	182.9mm×124mm×305mm m (9 slots)

Light scrambler module ¹		
Model	85200B-1301	85200B-1501
Fiber type	Single mode (SM)	Single mode (SM)
Wavelength range	1260nm ~ 1360nm	1500nm ~ 1600nm
Insertion loss	≤ 1.0dB(FC/UPC)	≤ 1.0dB(FC/UPC)
Polarization Dependent Loss	≤ 0.05dB(FC/UPC)	≤ 0.05dB(FC/UPC)
Degree of polarization after perturbation	≤ 5%(1310nm、Normal Temperature Test)	≤ 5%(1550nm、Normal Temperature Test)
Frequency of optical disturbance	≥ 1.2MHz	≥ 1.2MHz
Size(H*W*D)	40.6mm×124mm×305mm (2 slots)	40.6mm×124mm×305mm (2 slots)

Note: 1. The wavelength can be customized. Environmental adaptability: working temperature is 0°C ~ +40°C; storage temperature is -20°C ~ +70°C; relative humidity is 5% ~ 95%. All the above indicators are tested at 23±5°C, below 60%RH.

Ordering Information

- Mainframe:**

Description	Model	Remarks
Lightwave test platform	9951A	8 Channels
	9951Y	18 Channels
Optical power meter module	74600A-4132	-50dBm ~ +26dBm
	74600A-4133	-90dBm ~ +10dBm
Optical attenuator module	74100A-1011	Single mode (SM), Wavelength 1250nm ~ 1650nm
	74100A-2011	Multimode (MM), Wavelength 700nm ~ 1350nm
Optical switch module	74000A-0102	1×2 Channel
	74000A-0104	1×4 Channel
	74000A-0108	1×8 Channel
	74000A-0116	1×16 Channel
	74000A-0124	1×24 Channel
	74000A-0132	1×32 Channel
Light scrambler module	85200B-1501	1500nm ~ 1600nm
	85200B-1301	1260nm ~ 1360nm

- Accessories:**

No.	Model	Remarks
1	Power cord	Standard three-core power cord
2	User manual	/
3	Certificate of qualification	/

Note: Due to design improvement, the above contents are subject to change without prior notice.

