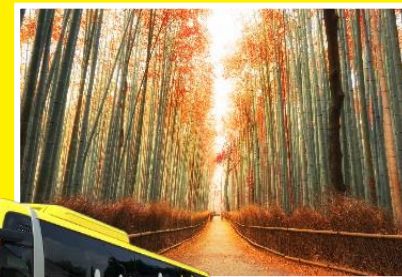


February 2024 Edition : NO. 18 - A

LIMON Tours [DMC Japan]

# Signature 1-Day Bus Tours LIMON

With English  
Tour Guide!



JAPAN FIT/SIC Bus Tours

For Travel Period: March 1<sup>st</sup> ~ December 31<sup>st</sup> 2024

Contact us **LIMON Thailand**  
**Thai cross Japan Tour Co., Ltd.**

Ms. Waraporn Wongkatanyoo  
E-mail : waraporn-w@shinkigroup.com  
Tel : 02-011-7158 / 098-978-9122

## Company Profile

Corporate Name : LIMON Tours [DMC Japan]

Shinki Kanko Co., Ltd.

Company Founded : November 20<sup>th</sup> 1997

Others : Officially authorized by IATA

■ Shinki Bus Group : Total 22 companies

Corporate Name : Shinki Bus Co., Ltd.

Company Founded : August 8, 1927

Capital : 3,140,000,000 yen

Stock : Listed on the standard section of the  
Tokyo Stock Exchange

Company's Fleet of Bus : 1,100 (180 out of them are sightseeing buses.)

Number of Payrolls : 5,000



# LIMON

Overseas Sales : Yoshiki Sakata (Eddie)

Tel. : +81-6-4805-7100

Cellphone : +81-80-4083-2775

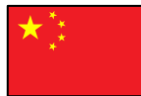
E-mail : [info@limontours.jp](mailto:info@limontours.jp)

Emergency Call: +816-6131-5340



<https://limonbus.livecall.jp>

Emergency Call QR Code



# Osaka and Kyoto Departure

- ※Schedule is subject to change depending on the weather, traffic condition, etc.
- ※Customers from different courses will be sharing the same vehicle.
- ※Departure from Osaka and Kyoto will be using different bus, customer cannot change their drop-off point.
- ※Vehicle type may vary depends on the total of customers on that day. (small groups may use minivan)
- ※Restaurant for A plan and S plan is different. (Food pictures shown are for sample images)
- ※Emergency Call Center: +816-6131-5340 or <https://limonbus.livecall.jp>

ONLY AVAILABLE on the departure date 30 mins. before the tour start until 5:00 PM JST  
( English, Chinese, Portuguese, Spanish, Korean, Thai, Vietnam)



Emergency Call QR Code

## Meeting Point

8:30 AM



**Osaka - Umeda**

Hearton Hotel Nishi Umeda

9:00 AM



**Osaka - Namba**

Namba OCAT Building

9:15 AM



**Kyoto Station**

In front of AVANTI



# Kyoto Highlights One Day Bus Tour

## ■ Departure Date (2024)

Destination	Kyoto	
Departure date <b>Everyday</b>	Mar. 1st ~ Dec.31st	
Minimum Pax	1 Person	
Duration	Osaka - Umeda	8:30~19:15
	Osaka - Namba	9:00~18:30
	Kyoto	9:15~17:45



Fushimi Inari Taisha



Kiyomizudera  
Admission fee: 400 yen/adult



Kinkakuji  
Admission fee: 500 yen/adult

## ■ Schedule

<b>Fushimi Inari Taisha</b>  80 min.	<b>Kiyomizudera</b> (including lunch time)  100 min.	<b>Kinkakuji</b>  45 min.	<b>Arashiyama</b>  80 min.
--	---	---------------------------------	----------------------------------



Arashiyama-Bamboo Forest

※Guests must walk for 10-15 min from the parking lot to the bamboo forest. And there are many slopes and stairs in the Kiyomizudera area. Passengers with inconveniences are advised to consider participating.

## S Plan

### ■ Tour Price 【Includes Lunch & Admission】

Adult **15,000yen**  
 Child 3-12 yr. old **14,000yen**



Deluxe Japanese Set Lunch

Free for 2yr old or younger (No Seat)

●Tour Inclusions:  
 Round trip bus fare,  
 Lunch (Deluxe Japanese Set Lunch),  
 Admission ticket  
 (Kiyomizudera and Kinkakuji)

## A Plan

### ■ Tour Price 【Includes Lunch & Admission】

Adult **12,000yen**  
 Child 3-12 yr. old **11,000yen**



Japanese Set Lunch

Free for 2yr old or younger (No Seat)

●Tour Inclusions:  
 Round trip bus fare,  
 Lunch (Japanese Set Lunch),  
 Admission ticket  
 (Kiyomizudera and Kinkakuji)

## N Plan

### ■ Tour Price 【No Lunch】

Adult **9,000yen**  
 Child 3-12 yr. old **8,000yen**

Free for 2yr old or younger (No Seat)

●Tour Inclusions:  
 Round trip bus fare

Lunch and admission ticket are  
**NOT included**



# Sagano Romantic Train and Kyoto One Day Bus Tour

## ■ Departure Date (2024)

<b>Destination</b>	Kyoto	
<b>Departure date</b>	Mar. 1 <sup>st</sup> ~ Dec.31 <sup>st</sup>	
<b>Minimum Pax</b>	1 Person	
<b>Duration</b>	Osaka - Umeda <b>Mon, Fri</b>	8:30~18:45
	Osaka - Namba <b>Mon, Fri</b>	9:00~17:50
	Kyoto <b>Tue, Thu, Sat, Sun</b>	9:15~17:05



Kiyomizudera  
Admission fee: 400 yen/adult



Sagano Romantic Train

## ■ Schedule

<b>Fushimi Inari Taisha</b> 80 min.	<b>Arashiyama</b> (including lunch time) 120 min.	<b>Sagano Romantic Train</b> Arashiyama St. – Kameoka St. 23 min.	<b>Kiyomizudera</b> 75 min.
--	---	---	--------------------------------



Sagano Train with Sakura Scenery

**Attention :** The Sagano Romantic Train boarding time may change. If so, the sightseeing schedule will also be revised.  
Your seat will be designated by the tour guide.  
Guests must walk for 10-15 min from the parking lot to the bamboo forest. And there are many slopes and stairs in the Kiyomizudera area. Passengers with inconveniences are advised to consider participating.

## S Plan

### ■ Tour Price [Includes Lunch & Admission]

**Adult** 15,000yen  
**Child** 3-12 yr. old 14,000yen

Free for 2yr old or younger (No Seat)



Beef Shabu Shabu

●Tour Inclusions:  
Round trip bus fare,  
One way Torokko Train ticket,  
Lunch (Beef Shabu Shabu set lunch),  
Admission ticket (Kiyomizudera)



## A Plan

### ■ Tour Price [Includes Lunch & Admission]

**Adult** 12,000yen  
**Child** 3-12 yr. old 11,000yen

Free for 2yr old or younger (No Seat)



Buffet Lunch

●Tour Inclusions:  
Round trip bus fare,  
One way Torokko Train ticket,  
Lunch (Buffet),  
Admission ticket (Kiyomizudera)

## N Plan

### ■ Tour Price [No Lunch]

**Adult** 9,000yen  
**Child** 3-12 yr. old 8,000yen

Free for 2yr old or younger (No Seat)

●Tour Inclusions:  
Round trip bus fare,  
One way Torokko Train ticket  
  
Lunch and admission ticket are  
**NOT included**

# Kyoto and Nara One Day Bus Tour



English

## Departure Date (2024)

<b>Destination</b>	Kyoto	
<b>Departure date</b>	Mar. 1 <sup>st</sup> ~ Dec.31 <sup>st</sup>	
<b>Minimum Pax</b>	1 Person	
<b>Duration</b>	Osaka - Umeda <b>Sun, Tue, Thu</b>	8:30~18:10
	Osaka - Namba <b>Sun, Tue, Thu</b>	9:00~17:40
	Kyoto <b>Mon, Wed, Fri, Sat</b>	9:15~18:05



Arashiyama-Bamboo Forest



Arashiyama-Togetsukyo Bridge



Nara Park

## Schedule

Arashiyama  
(including lunch time)  
120 min.

Kinkakuji  
45 min.

Nara Park and Todaiji Temple  
90 min.

※Guests must walk for 10-15 min from the parking lot to the main attractions. Passengers with inconveniences are advised to consider participating.



Kinkakuji  
Admission fee: 500 yen/adult



Todaiji  
Admission fee: 600 yen/adult

## S Plan

### Tour Price 【Includes Lunch & Admission】

Adult **15,000yen**  
Child  
3-12 yr. old **14,000yen**



Beef Shabu Shabu

Free for 2yr old or younger (No Seat)

●Tour Inclusions:  
Round trip bus fare,  
Lunch (Beef Shabu Shabu set lunch),  
Admission ticket (Kinkakuji and Todaiji)



## A Plan

### Tour Price 【Includes Lunch & Admission】

Adult **12,000yen**  
Child  
3-12 yr. old **11,000yen**



Buffet Lunch

Free for 2yr old or younger (No Seat)

●Tour Inclusions:  
Round trip bus fare,  
Lunch (Buffet),  
Admission ticket (Kinkakuji and Todaiji)

## N Plan

### Tour Price 【No Lunch】

Adult **9,000yen**  
Child  
3-12 yr. old **8,000yen**

Free for 2yr old or younger (No Seat)

●Tour Inclusions:  
Round trip bus fare

Lunch and admission ticket are  
**NOT included**



# Arashiyama and Nara One Day Bus Tour

## ■ Departure Date (2024)

<b>Destination</b>	Kyoto	
<b>Departure date</b>	Mar. 1 <sup>st</sup> ~ Dec.31 <sup>st</sup>	
<b>Minimum Pax</b>	1 Person	
<b>Duration</b>	Osaka - Umeda <b>Sun, Tue, Thu</b>	8:30~18:10
	Osaka - Namba <b>Sun, Tue, Thu</b>	9:00~17:40
	Kyoto <b>Mon, Wed, Fri, Sat</b>	9:15~18:05



Randen Train in Sakura Season



Arashiyama-Bamboo Forest

## ■ Schedule

**Arashiyama**  
(including lunch time)

180 min.

**Randen**

Arashiyama Shijo-Omiya  
13:36 Dep. → 14:00 Arr.

**Nara Park**

90 min.

※Randen ride from Arashiyama to Shijo-Omiya will not be accompanied by tour guide.

※Bus will be boarded at Shijo-Omiya station.

※Guests must walk for 10-15 min from the parking lot to the main attractions. Passengers with inconveniences are advised to consider participating.



Todaiji  
Admission fee: 600 yen/adult



Nara Park

## S Plan

### ■ Tour Price 【Includes Lunch & Admission】

**Adult** 15,000yen

**Child** 14,000yen  
3-12 yr. old



Beef Shabu Shabu

Free for 2yr old or younger (No Seat)

#### ●Tour Inclusions:

Round trip bus fare, Lunch (Beef Shabu Shabu set lunch), Randen One-Way Train Ticket  
Admission ticket (Todaiji)



## A Plan

### ■ Tour Price 【Includes Lunch & Admission】

**Adult** 12,000yen

**Child** 11,000yen  
3-12 yr. old



Buffet Lunch

Free for 2yr old or younger (No Seat)

#### ●Tour Inclusions:

Round trip bus fare, Lunch (Buffet),  
Randen One-Way Train Ticket  
Admission ticket (Todaiji)

## N Plan

### ■ Tour Price 【No Lunch】

**Adult** 9,000yen

**Child** 8,000yen  
3-12 yr. old

Free for 2yr old or younger (No Seat)

#### ●Tour Inclusions:

Round trip bus fare, and  
Randen One-Way Train Ticket

Lunch and admission ticket are  
**NOT included**

## Kyoto by the Sea Amanohashidate · Ine Walking Day Tour

English  
Chinese

## ■ Departure Date (April 2024 – November 2024)

Destination	Amanohashidate , Ine	Duration	Hearton Hotel Nishi-Umeda	8:30 am ~ 18:10 pm ETA
Departure	Every Friday & Saturday		Namba OCAT	9:00 am ~ 18:30 pm ETA
Minimum Pax	1 person			

## ■ Itinerary

Amanohashidate  
(Free time)

120 Minutes

Fuchu area in Amanohashidate is a walking area. You will have your own free time without a tour guide escort.

Ine no Funaya  
(Free time)

70 Minutes

There is a possibility that you might arrive in Ine near the cruise port. You will have your own free time without a tour guide escort.



Amanohashidate

Amanohashidate (Fuchu Area)  
Motoise Kono Shrine

## A Plan

## ■ Tour Price 【Round trip Cable Car, Lunch, Drink Coupon】

Adult **10,000 yen**  
Child **9,000 yen**  
3-12 yr.old

Free for 2yr or younger (No seat)



※Lunch Meal Coupon cannot be used for other menus.

## ● Tours Inclusion

Round trip bus fare  
Roundtrip Amanohashidate Cable Car Ticket  
**Black Curry Lunch Coupon** (Kasamatsu park : Ama Terrace 2F)  
Drink Coupon 550 yen (Ine Cafe)

## N

## Plan

## ■ Tour Price [No Lunch]

Adult **8,200 yen**  
Child **7,200 yen**  
3-12 yr.old

Free for 2yr or younger (No seat)

## ● Tours Inclusion

Round trip bus fare ONLY  
Drink Coupon 550 yen (Ine Cafe)



Ine Café

※ Café seat reservation is not available.  
※ The seat in the picture is a photo spot area and not actually available for eat-in service.  
※ 550 yen (Tax and Vat inclusion) drink coupon is included.



## Kyoto by the Sea Amanohashidate Cable car · Ine no Funaya Cruise Day Tour

English  
Chinese

### ■ Departure Date (April 2024 – November 2024)

Destination	Amanohashidate , Ine
Departure	Every Friday & Saturday
Minimum Pax	1 Person

Duration	Hearton Hotel Nishi-Umeda	8:30 am ~ 18:10 pm ETA
	Namba OCAT	9:00 am ~ 18:30 pm ETA

### ■ Itinerary

Amanohashidate

120 minutes

Fuchu area in Amanohashidate is a walking area. The lunch coupon is only available at the participating store.

Ine Cruise



25 minutes

There is a possibility that you might arrive in Ine near the cruise port. It will be impossible to walk around the Ine Village.



Amanohashidate



Amanohashidate Cable car

### S Plan

#### ■ Tour Price 【Cable Car·Ine Cruise tour·Shabu Shabu Lunch】

**Adult** 12,000 yen  
**Child**  
**3-12 yr.old** 11,000 yen

Free for 2yr or younger (No seat)



#### ● Tours Inclusion

Round-trip bus fare  
 Boarding tickets for Ine cruise  
 Amanohashidate Round trip cable car ticket  
 Amanohashidate Gozen (Pork Shabu Shabu set)

### A Plan

#### ■ Tour Price 【Lunch coupon & tickets included】

**Adult** 11,000 yen  
**Child**  
**3-12 yr.old** 10,000 yen

Free for 2yr or younger (No seat)

#### ● Tours Inclusion

Round-trip bus fare  
 Boarding tickets for Ine cruise and cable car.  
 1,500 Yen meal coupon (available at Fuchu area)  
 ※Only available at the participating stores.  
 ※No changes from the coupon and unable to redeem back in cash.



Ine no Funaya Cruise Tour

# Vegetarian and Halal menu

S Plan :

No.1002

No.1003

No.1010



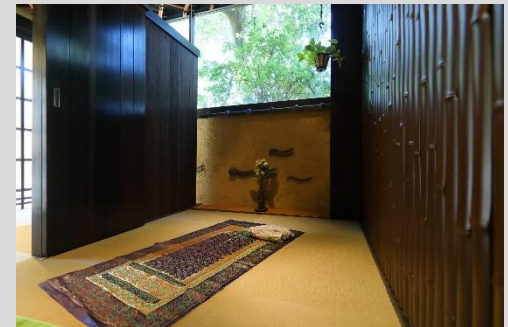
**Halal/vegetarian Japanese set meal**

Provided by Yoshiya – Arashiyama Main Store (<http://www.yoshiya.jp/honten>)

The restaurant offers the same halal and vegetarian menu. Please check their website for Halal certification and Vegan standards

Menu may vary

Provide prayer space



If you need a place to pray, you can use the space provided by Yoshiwu Restaurant. Please remember to bring your own prayer cloth. Please note that the bus will depart on time and will not wait for latecomers.

**Details and halal options available upon request only.  
Please request this when booking.**

# Tokyo Departure

- ※If the road to Mt. Fuji 5<sup>th</sup> Station is closed, the bus will go to Mt. Fuji 4<sup>th</sup> Station or Oshino Hakakai instead.
- ※Schedule is subject to change depending on the weather, traffic condition, etc.
- ※ Customers from different courses will be sharing the same vehicle.
- ※Vehicle type may vary depends on the total of customers on that day. (small groups may use minivan)
- ※Restaurant for A plan and S plan is different (Food pictures shown are for sample images)
- ※Emergency Call Center: +816-6131-5340 or <https://limonbus.livecall.jp>

ONLY AVAILABLE on the departure date 30 mins. before the tour start until 5:00 PM JST

( English, Chinese, Portuguese, Spanish, Korean, Thai, Vietnam)



Emergency Call QR Code

## Meeting Point



**Shinjuku**  
Shinjuku Center Building



**Toranomon Hills**  
Business Tower 1F



# Hakone (Pirate Ship Cruise & Ropeway) and Mt. Fuji 5th Station One Day Bus Tour

## ■ Departure Date (2024)

Destination	Mt. Fuji & Hakone	<b>Duration</b>	Shinjuku <b>8:30~19:15</b>
Departure date <b>Everyday</b>	Mar. 19 <sup>th</sup> ~ Dec.31 <sup>st</sup>		
Minimum Pax	1 person		

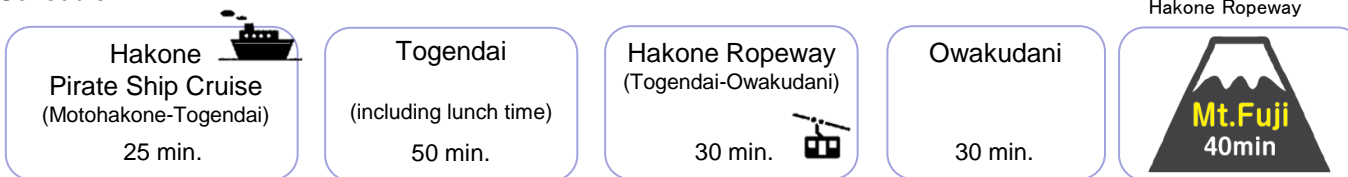


Hakone Ropeway



Hakone Pirate ship Interior

## ■ Schedule



### No refund will be given for schedule change for the reasons below:

- In case of Hakone Ropeway or Pirate Ship Cruise is not operating (due to suspension of service, bad weather, traffic jams, etc.), we will take you to other alternative facilities. Alternative facilities includes Hakone Komagatake Ropeway, Hakone Sekisho, Yosegi Zaiku, etc.
- The Hakone Ropeway and Owakudani may be suspended due to an increase in the volcanic alert level or the occurrence of highly concentrated volcanic gas.



Hakone Pirate Ship Cruise



## A Plan

### ■ Tour Price [Includes Lunch & Admission]

Adult **18,000yen**  
 Child 3-12 yr. old **17,000yen**

Free for 2yr old or younger (No Seat)

- Tour Inclusions:  
 Round trip bus fare,  
 Lunch,  
 Boarding ticket  
 (cruise ship and ropeway)



Tempura and udon lunch

## N Plan

### ■ Tour Price [No Lunch]

Adult **16,000yen**  
 Child 3-12 yr. old **15,000yen**

Free for 2yr old or younger (No Seat)

- Tour Inclusions:  
 Round trip bus fare  
 Boarding ticket  
 (cruise ship and ropeway)

# Mt. Fuji 5<sup>th</sup> Station and Lake Kawaguchi One Day Bus Tour



English

## ■ Departure Date (2024)

Destination	Mt. Fuji & Lake Kawaguchi	<b>Duration</b>	Toranomon	7:40~19:05
Departure date	Mar. 1 <sup>st</sup> ~ Dec.31 <sup>st</sup>			
Minimum Pax	1 Person			



Kawaguchiko Excursion Ship "APPARE"



Mt. Fuji Panoramic Ropeway

## ■ Schedule



Fuji-Q Highland  
(lunch time)

65 min.

Lake Kawaguchi  
(Excursion Ship & Ropeway)

195 min.



Mt. Fuji

**There will be NO GUIDE at Lake Kawaguchi.** Excursion ship at Lake Kawaguchi approximately 20 minutes. Mt. Fuji Panoramic Ropeway approximately 3 minutes for 1 way. We will be using different bus from Tokyo to Lake Kawaguchi (departure) and Lake Kawaguchi to Tokyo (return). Please make sure to bring your luggage with you when you get off the bus at Lake Kawaguchi.

## S Plan

### ■ Tour Price 【Includes Lunch】

Adult **16,000yen**

Child  
3-12 yr. old **15,000yen**



80 variety buffet

Free for 2yr old or younger (No Seat)

- Tour Inclusions:  
Round trip bus fare,  
Lunch (buffet),  
Boarding ticket  
(excursion ship and ropeway)



Restaurant interior

## A Plan

### ■ Tour Price 【Includes Bread & Drink】

Adult **14,000yen**

Child  
3-12 yr. old **13,000yen**



3 varieties of bread & drink

Free for 2yr old or younger (No Seat)

- Tour Inclusions:  
Round trip bus fare,  
Snacks (bread & drink),  
Boarding ticket  
(excursion ship and ropeway)



Cafe interior

## N Plan

### ■ Tour Price 【No Lunch】

Adult **13,000yen**

Child  
3-12 yr. old **12,000yen**

Free for 2yr old or younger (No Seat)

- Tour Inclusions:  
Round trip bus fare  
Boarding ticket  
(excursion ship and ropeway)