

Accept no substitutions, specify SureSeal by name.



Stop floor drain odors before they start.

Any drain.
Anywhere. Every time.

SureSeal® waterless
in-line drain trap
quickly
and
effectively
solves odor
problems
associated
with infrequently
used floor
drains.



Water passes by flapper

Odors stay out



Code	Description	Qty.
97041 (SS2009V)	2" Trap Seal	6
97042 (SS3009V)	3" Trap Seal	6
97043 (SS3509V)	3½" Trap Seal	6
97044 (SS4009V)	4" Trap Seal	6

FEATURES

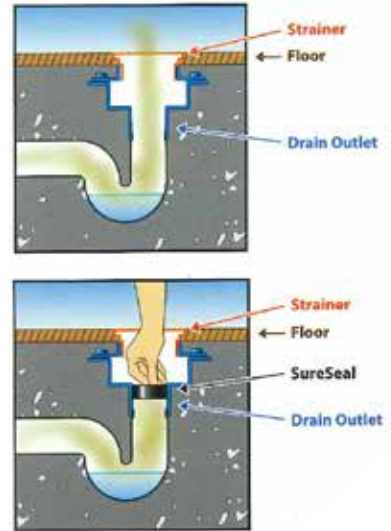
- Simple one-piece installation
- Use on all brands of drains
- Economical

SureSeal® waterless in-line drain trap seal is the preferred choice of engineers, PHC professionals and code officials across the country.

Application • The SureSeal Inline Trap Sealer can be used with all 2", 3", and 4" floor drains and in 3½" & 4" floor drain strainers. I.E shower drains, outdoor drains, basement drains, water heater drains, HVAC condensation drains, maintenance areas, floor/mop sinks, residential bathrooms, under kitchen sinks, apartment and condo bathrooms and other applications. • The SureSeal Inline Trap Sealer can be easily retrofitted to older drains, as its variety of designs ensure compatibility with all other drain types.

Installation Instruction: Ideally the installation should take place during the Trim out stage. This insures the construction debris will not damage the SureSeal.

1. Insert SureSeal into strainer throat making sure the SureSeal is level and properly seated.
2. Complete trim out of floor drain. • For Retro-fit Instruction: 1. Remove grate from floor drain and thoroughly clean the strainer throat. * 2. Insert SureSeal into strainer throat making sure the SureSeal is level and properly seated. 3. Replace grate on floor drain.



Simply press SureSeal into a standard floor drain to eliminate the need for a trap primer, or as an inexpensive retrofit alternative to replace a failed trap primer. SureSeal is certified to ASSE 1072 for use in any drain - in any location.



Models available to universally fit any manufacturer's ANSI/ASME A112.6.3 conforming drain.



* Note: Failure to properly clean may create an improper seal and cause leakage around seal.



The Green Solution

2" SureSeal®

MODEL #SS2009V

INLINE FLOOR DRAIN TRAP SEALER

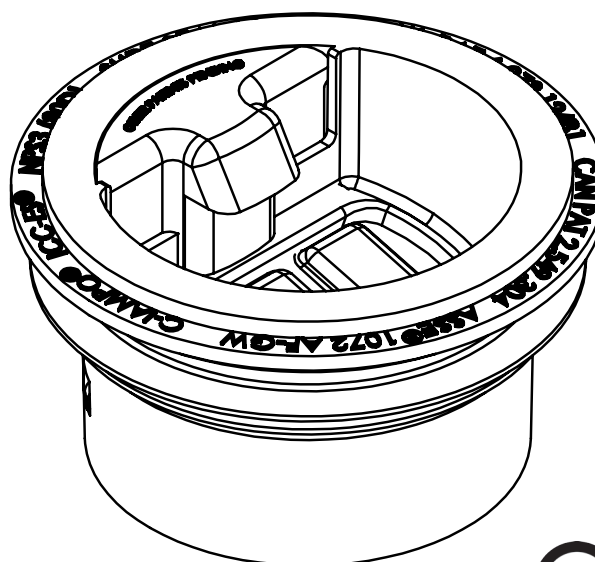
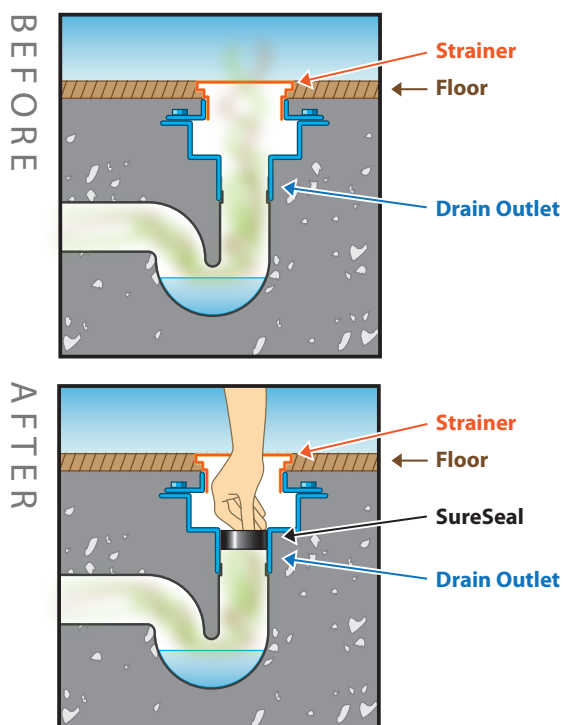


Specification: SureSeal model SS2009V Waterless Inline 2" Drain Trap Seal. HDPE (High Density Poly Ethylene) housing with heavy duty proprietary silicone diaphragm and soft EPDM rubber sealing gasket. Floor rating ASSE 1072 AF GW.

Function: Installs into the outlet of drain bodies, or drain hubs to protect the trap seal from evaporation. Creates a physical barrier that blocks sewer gases and their odors from escaping. Provides waterless trap seal protection equivalent to water based trap primers.

- **New Construction:** Used as a trap primer replacement or in conjunction with a trap primer to provide protection against escaping sewer gases. Eliminates the need to repair/replace trap primers when they fail.
- **Retrofit:** Used in situations where trap primers have failed or where trap primers were never installed.

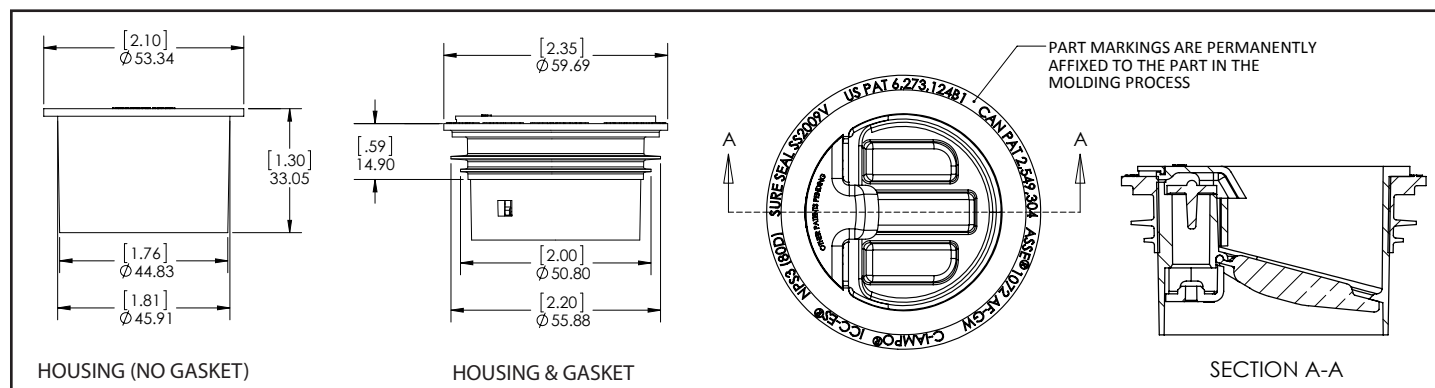
Benefits: Simple to install, eliminates the need for complex, time consuming, and expensive repairs. ECO friendly providing 100% water savings efficiency over traditional methods.



ICC-ES Listed: PMG-1070 IAPMO Listed: C-4165

U.S. Patent 9,010363

Other Patent Pending



Contact: RectorSeal® 2601 Spenwick Drive, Houston, TX 77055 P 713-263-8001 | 800-231-3345 F 713-263-7577 | 800-441-0051 W rectorseal.com

DURMAST CO., LTD.

48 Moo 2, Soi Watsripawat, Paduangasaw RD., Salangrang, Bangkuay, Nonthaburi, Thailand 11130

Tel. 02 490-4445-6 Fax. 02 490-4447 www.durmast.net E-mail: pewdurmast@gmail.com