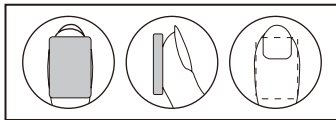


SETTING FINGERPRINT

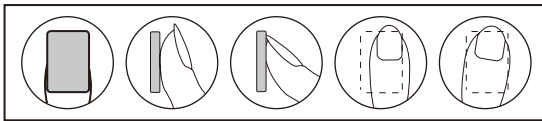
- Open the door and press reset button once, you will hear one short buzzer beep. Meanwhile you will see the display shows "-----" and fingerprint scanner are flashing.
- Place your finger on fingerprint scanner and then remove, you will hear 1 buzzer beep.
- Repeat the same fingerprint scanning two more times, finally you will hear 2 buzzer beeps and see fingerprint scanner flash twice, it means the new fingerprint register successfully.

❗ **CAUTION:** Maximum 80 fingerprints support! Please use same finger during fingerprint registration!

- In order to improve the correct rate of finger identification, users can refer to the following advices: Suggest each user registers 2-3 fingerprints. Suggest female and children try to register with thumb and middle finger. Try to press with even power. If encountered with very dry weather, suggest to breathe toward fingers till a little wet.
- If the 80 fingerprints are fully registered, then no more fingerprint can be added, the fingerprint scanner will show wrong prompt: you will hear 10 buzzer beeps and see the screen displays "full".
- Once the fingerprint is full, you can only delete all registration fingerprints at once through factory restore.



I. Correct



II. Incorrect

RETURNING FACTORY SETTING

- Open the safe and press the reset button for over 3 second, you will hear two buzzer beep, it means the safe return to factory settings.

❗ **CAUTION:** In factory settings, the user code is "159" and no fingerprint allow to open safe!

SOUND OFF/ON

- The keypad sound can be turned OFF and ON by pressing the " Clear " button during the safe in sleep mode (the display is off). The display will show "SOUND ON" or "SOUND OFF".

For any help, kindly consult the local distributor

B.C.F. Group Co.,Ltd.

1/23, 1/34 Moo 7, Soi Petkasem 122, Petkasem Road,
Omnoi, Krathumban, Samutsakorn 74130
Tel : 02-118-2888 Fax : 02-118-0888



FIREPROOF SAFE INSTRUCTION ESP



❗ **Please do not keep emergency keys in your safe!**

Dear valued customer:

Thank you for choosing our products! You've taken an important step in organizing and protecting your most valuable possessions. Every series of our safes is professionally made and designed to provide safety. Please take time to read and familiarize yourself with the proper operating procedures of your new safe presented on the following pages.

Again, thank you for choosing our products!

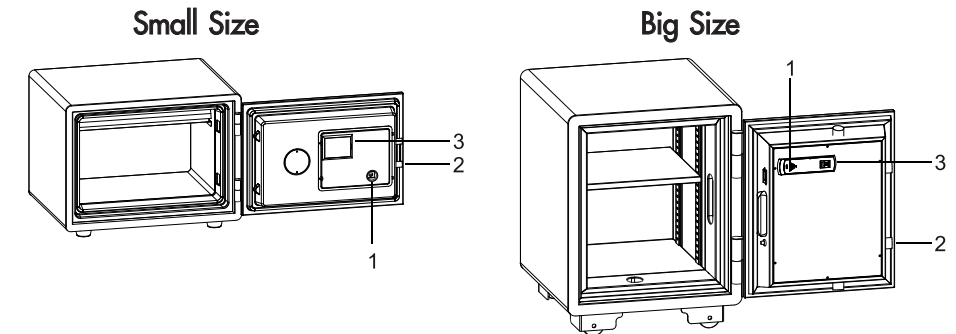
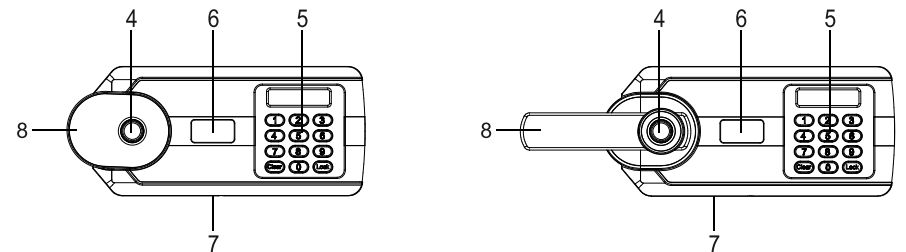


Illustration of the control panel



1. Reset Button

2. Bolt

3. Battery Compartment

4. Fingerprint Scanner

5. Keypad Display

6. Emergency Lock Cover

7. Jack for External Battery Box

8. Handle

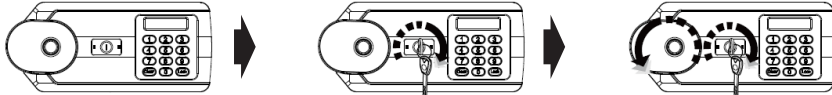
❗ **CAUTION:** All drawings in this manual have been prepared based on the ESP series. The exterior design or component positions of other models may be different from what is indicated in the drawings, while the operation is the same.

OPENING YOUR SAFE FOR FIRST TIME

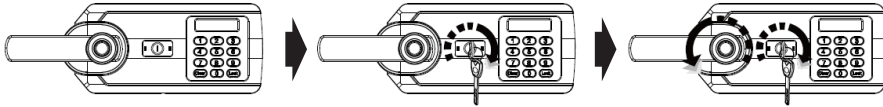
- Remove the emergency lock cover.
- Insert the emergency key and turn the key clockwise, then turn the handle anticlockwise to open the door.

⚠ **CAUTION:** Please do not leave your emergency keys in your safe.

Small Size



Big Size



INSERTING THE BATTERY

- Open the door and remove the battery cover.
- Insert 4 AA batteries into the battery compartment.
- Every time the batteries are installed, the safe will run a self test with the display showing a count down from “9” to “0” and then “good” at the end of the self test, indicating that the batteries are installed correctly and the safe is working properly.

⚠ **CAUTION:** Replace 4 fresh alkaline batteries by lining them up in a manner as indicated by the “+” and “-” signs. When pressing “Lock” button to wake up the safe, the display show “lo-bat” means the battery in low voltage, you shall change new batteries immediately.

OPENING SAFE

OPENING DOOR BY USER CODE

- Press the “Lock” button to wake up the safe, then input registered user code (3 to 8 digits) and press “Lock” again.
- You will see “OPEN” show on display.
- Rotate the handle anticlockwise (downwards) to open the door.

⚠ **CAUTION:** The preset user code is “159”!

OPENING DOOR BY FINGERPRINT

- Place the registered fingerprint on fingerprint scanner.
- You will see “OPEN” show on display.
- Rotate the handle anticlockwise (downwards) to open the door.

⚠ **CAUTION:** In factory settings mode, no fingerprint allow to open the door!

CLOSING SAFE

- For big size: Close the door, the handle will automatically turn to the horizontal position indicating that the safe is closed and locked.
- For small size: To close the door, you need to manually turn the handle up to the horizontal position and that indicating the safe is closed and locked.

AUTOMATIC LOCK

- 5 continuously wrong code entries or 5 continuously wrong fingerprint entries will activate warning beep for 30 second. Meanwhile, both the keypad and fingerprint scanner will lockout for 210 seconds.

⚠ **CAUTION:** You can open the door by emergency key first and then remove the batteries to terminate beeps.

SETTING USER CODE

- Open the door and press reset button once, you will hear one short buzzer beep. Meanwhile, you will see the display shows “-----” and fingerprint scanner are flashing.
- Then input new user code (3 to 8 digits) and press “Lock” to confirm.

⚠ **CAUTION:** Please keep the door opening before new user code testing successfully.

SETTING ANTI SHAKE ALARM

- Keep the door closed, input “0” keys to activate the vibration alarm function, display show “BELL ON”
- If the safe is suffer from external impact, the vibration alarm function will be turned on and the alarm will sound for about 30 second. You can enter the correct code and confirm by “Lock” to clear the alarm.

HIDE THE CODE

The safe code can be hidden by press the “Lock” button to wake up the safe, and press the “Clear” button before you input the user code and this is a one-time operation.