

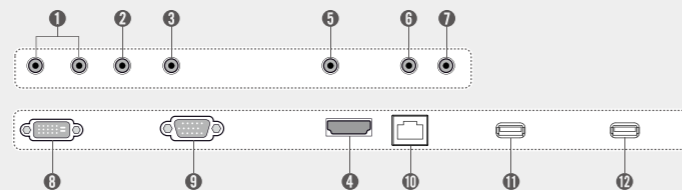
Specifications

SE3KB Series	65SE3KB	55SE3KB	49SE3KB	43SE3KB	32SE3KB
Screen Size	65	55	49	43	32
Panel Technology	IPS (PD)				
Aspect Ratio	16 : 9				
Native Resolution	1,920 x 1,080 (FHD)				
Brightness	400cd/m ²		350cd/m ²		
Contrast Ratio	1,300:1		1,100:1		
Dynamic CR	500,000:1				
Viewing Angle (H x V)	178 x 178				
Surface Treatment	Hard coating (3H), Anti-glare treatment of the front polarizer (Haze 1 % (Typ.))				
Guaranteed Operating Hour	18 Hours				
Orientation	Portrait & Landscape				
Input	HDMI, DVI-D, RGB, Stereo Mini Jack, USB (2)				
Output	Stereo Mini Jack				
External Control	RS232C (In/Out), RJ45, IR Receiver				
Bezel Color	Black				
Bezel Width	11.9mm (T/R/L), 18mm (B)	11.9mm (T/R/L), 18mm (B)	11.9mm (T/R/L), 18mm (B)	11.9mm (T/R/L), 18mm (B)	13mm (T/R/L), 18mm (B)
Monitor Dimensions (W x H x D)	1,456.9 x 838 x 56.5mm	1,238 x 714.9 x 54mm	1,102.2 x 638.5 x 54mm	969.6 x 563.9 x 54mm	729.4 x 428.9 x 55.5mm
Weight (Head)	27.9kg	17.5kg	14.3kg	10kg	5.4kg
Weight (Head + Stand)	33.1kg	20.8kg	17.6kg	12.5kg	6.2kg
Monitor with Optional Stand Dimensions (W x H x D)	1,456.9 x 898.1 x 293.7mm	1,238 x 773.4 x 219.6mm	1,102.2 x 696.8 x 219.6mm	969.6 x 622.2 x 193mm	729.4 x 481 x 154.2mm
Carton Dimensions (W x H x D)	1,561 x 977 x 190mm	1,330 x 807 x 170mm	1,197 x 760 x 166mm	1,052 x 650 x 123mm	810 x 510 x 132mm
Packed Weight	33.8kg	21.7kg	17.4kg	12.6kg	6.7kg
VESA™ Standard Mount Interface	300 x 300mm / 200 x 200mm				
SPECIAL FEATURES	USB Content Scheduling, Conformal Coating, SNMP Support, Wi-Fi Ready (Dongle), Power Management modes (Sustain Aspect Ratio/Stand-by Screen, etc.), No Signal Image setting, Enhanced ISM (Image Sticking Minimization) Mode, Holiday Schedule/Local Time Auto Setting, Fail-over (USB, RGB, DVI, HDMI), Wake on LAN				
ENVIRONMENTAL CONDITIONS	Operating Temperature range 0 °C to 40 °C	0 °C to 40 °C	0 °C to 40 °C	0 °C to 40 °C	0 °C to 40 °C
Operating Humidity range	10 % to 80 %	10 % to 80 %	10 % to 80 %	10 % to 80 %	10 % to 80 %
POWER	Power Supply Power Type	100-240V~, 50/60Hz Built-in Power			
POWER CONSUMPTION	Typ. Smart Energy Saving	95W 70W	70W 55W	65W 50W	60W 45W
AUDIO POWER	20W(10W x 2) for Internal Speaker (6 ohm)				
STANDARD (CERTIFICATION)	Safety EMC ErP / Energy Star	UL / cUL / CB / TUV / KC FCC Class "A" / CE / KCC Yes/NA Yes/Yes Yes/Yes Yes/Yes Yes/Yes			
MEDIA PLAYER COMPATIBILITY	External Media player Attachable	Yes (MP500/MP700)	Yes (MP500/MP700)	Yes (MP500/MP700)	Yes (MP500/MP700)
SOFTWARE COMPATIBILITY	SuperSign-W / Lite SuperSign-C	Yes Yes			
ACCESSORY	Basic Optional	Remote Controller (2 batteries included), Power Cord, QSG, RGB Cable, Regulation Book, Phone to RS232C Gender Stand(ST-652T), Media player, Wall bracket(LSW350B), VESA Adapter(AM-B330S)			
		Stand(ST-492T), Media player, Wall bracket(LSW350B), VESA Adapter(AM-B330S)	Stand(ST-492T), Media player, Wall bracket(LSW350B), VESA Adapter(AM-B330S)	Stand(ST-432T), Media player, Wall bracket(LSW230B), VESA Adapter(AM-B220S)	Stand(ST-322T), Wall bracket(LSW230B)

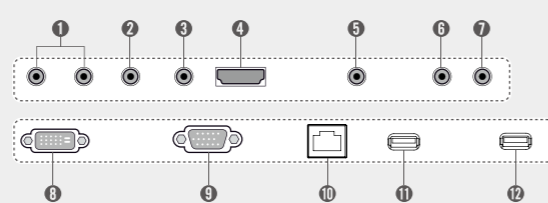
Connectivity

- 1 SPEAKER OUT
- 2 RS-232C IN
- 3 RS-232C OUT
- 4 HDMI
- 5 EXT IR IN
- 6 AUDIO IN
- 7 AUDIO OUT
- 8 DVI-D IN
- 9 RGB IN
- 10 LAN
- 11 USB1
- 12 USB2

65SE3KB



55SE3KB / 49SE3KB / 43SE3KB / 32SE3KB



Download LG Commercial Display Mobile App



More info www.lgcommercial.com

YouTube [youtube.com/c/LGCommercialDisplay](https://www.youtube.com/c/LGCommercialDisplay)

LG may make changes to specifications and product descriptions without notice.
Copyright © 2015 LG Electronics Inc. All rights reserved. "LG Life's Good" is a registered of LG Corp.
The names of products and brands mentioned here may be the trademarks of their respective owners.



Simple Way to Manage Your Digital Signage Standard Essential SE3KB Series



Simplify promotion content or sales information management with the LG SE3KB Series that satisfies a wide range of display purposes in your business. This series has a practical design with a slimmer bezel and depth for optimum space utilization. Multiple screen sizes ensure the best selection for your business environment.

Built-in Speaker Model (10W x 10W)

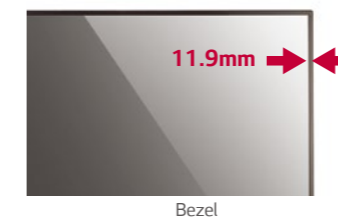
Key Features

Enhanced Design Configuration



Slimmer Bezel

The thinner bezel allows a perfect fit for a sleek look.



Detachable Logo

Portrait mode allows the logo to be positioned in the desired setting.



Cable Management

The well-organized cable terminals in the back optimize available space.



USB Content Management



USB Content Scheduling

Play and schedule contents with a USB connection-no server connection required.



*Supported Content Type : Video (MPEG1/2/4, H.264), Audio(MP3, AC3, MPEG, AAC, HEAAC, LPCM), Image(JPEG, PNG, BMP)

Dust & Humidity Protection



Conformal Coating

Circuit board reliability is enhanced with conformal coating that protects against dust, iron powder, humidity and other harsh conditions.



Simple Way to Manage Your Digital Signage

Standard Essential SE3KB Series



Screen Sizes
65"/55"/49"/43"/32"



SE3KB Series

- Edge-lit LED
- Brightness: 350cd/m² (65" 400cd/m²)
- Bezel : Top/Left/Right 11.9mm (Bottom 18.0mm)
- Depth : 54mm
- Special : Wi-Fi Dongle Ready, SuperSign W/C/M
- Local Time Auto Setting
- HDMI/DVD-D/RGB/RJ 45, RS232C in/out, 2 USB ports
- Embedded Media Player
- Built-in Speaker : 10W x 10W

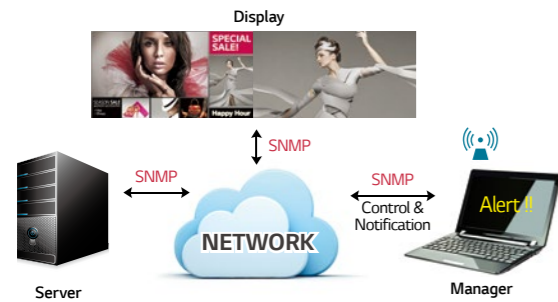


Other Features

Remote Management

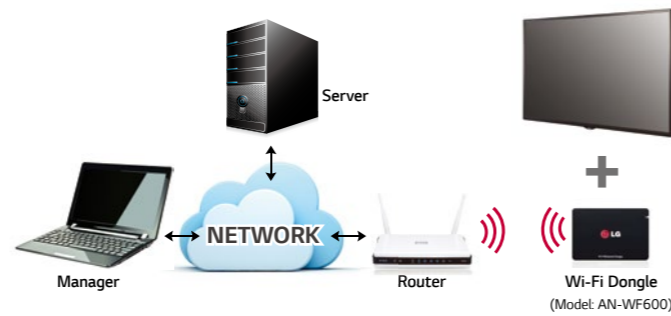
Simple Network Management Protocol

SNMP support ensures convenient network management.



Wi-Fi Support

SE3KB Series support Wi-Fi USB dongle connection for convenient content distribution.



Convenient Screen Mode

Aspect Ratio Sustainability*

Sustain the same resolution and picture quality while powering on/off by receiving EDID¹⁾ through switch IC.



Stand-by Screen*

Even without signal from the media player, the network does not turn off completely, so remote control is possible, which prevents unnecessary power usage and enables efficient management.



Scheduled Screen Wash**

Prevent residual images with the screen transition feature.



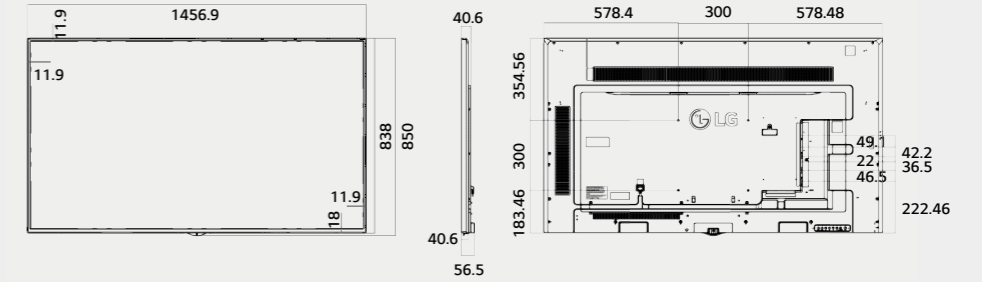
1) Extended Display Identification Data.
* Installation Menu > LG Digital Signage > PM Mode

** Installation Menu > ISM Method

Dimension (unit : mm)

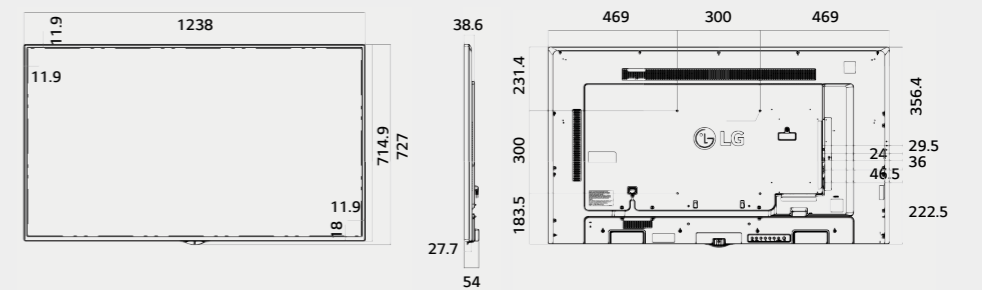
65"

1,456.9 x 838 x 56.5 /
27.9kg



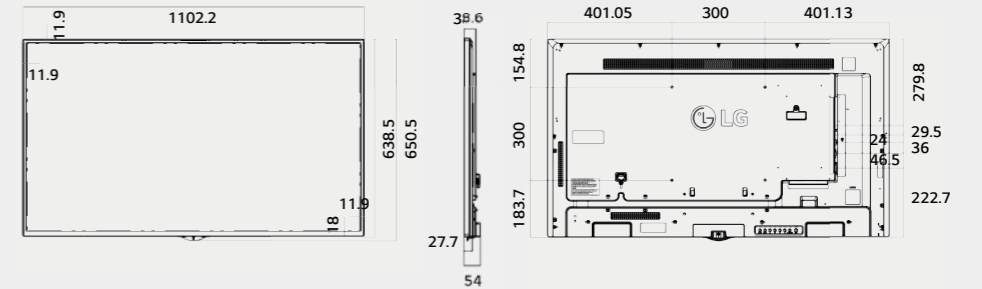
55"

1,238 x 714.9 x 54 /
17.5kg



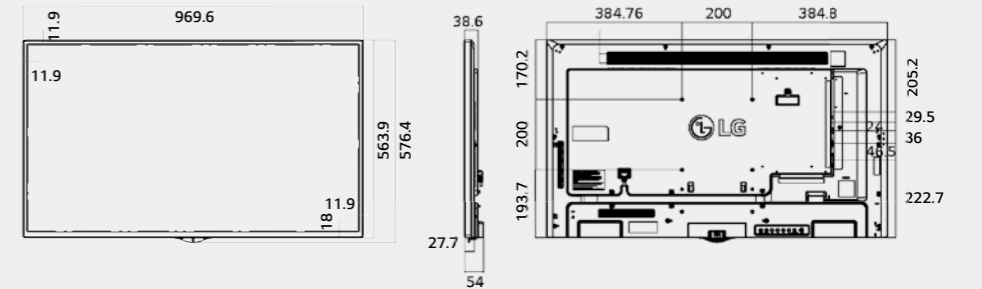
49"

1,102.2 x 638.5 x 54 /
14.3kg



43"

969.6 x 563.9 x 54 /
10kg



32"

729.4 x 428.9 x 55.5 /
5.4kg

