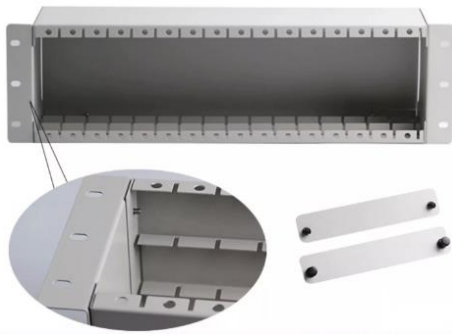


## 3U 19" Rack Mount Patch Panel Cabinet Chassis for PLC Splitter LGX/Cassette Type

### RackCassette-01



#### Product Summary

3U 19" Rack Mount Patch Panel Cabinet Chassis for PLC Splitter LGX/Cassette Type 16 Slots. It widely used in FTTx, EPON, BPON, GPON. Suitable to mount PLC Splitter LGX/Cassette Type 1xN 2xN PLC splitter, good performance, high reliability and stability, superior environmental and mechanical characteristics, and fast installation. They also enable more effective monitoring and management of fiber optical networks.

#### Features & Benefits:

- 3U Racks & Enclosure 16 slots for LGX/Cassette PLC Splitter
- Excellent Environmental Stability
- Excellent Mechanical
- Good uniformity and low insertion loss
- Low Polarization Dependent Loss
- Stability Telcordia GR-1221 and GR-1209

#### Specifications:

Item	Technical Parameter
Model:	RackCassette-01
Rack type:	Racks & Enclosure
Dimensions :	485x120x133mm
Chassis slot:	16 slots
Material:	Cold steel
PLC splitter type:	LGX/Cassette PLC Splitter
Material:	Cold steel
Color:	Gray
Fiber optic type:	Single mode or Multi mode
Size of chassis:	3U

