

**SPECIFICATION**  
**OIL IMMERSED TRANSFORMER**  
**1000 KVA. 3 Ph. 50 Hz**  
**33000 - 400 / 230 V.**

**THAI CENTER TRANSFORMER CO., LTD**

**TCT** THAI CENTER TRANSFORMER CO.,LTD  
SPECIFICATION THREE PHASE TRANSFORMER

Address : 67 / 1 Moo. 7 T. Bangkam A. Muang Nakhonpathom 73000

Tel. 081 - 8054856 , 034 - 219036 Fax 034 - 984092 <http://www.thaicentertransformer.com> e - mail : thaicenter671@hotmail.com

**Transformer Specification**

**Quote. Ref :**

**Customer :**

**Project :**

Rated power	.....KVA	1000	
Type of transformer	-	Oil immersed ( Conservator Tank )	
Standard	-	IEC 76	
Cooling System	-	ONAN	
No. Of phase	-	3	
Frequency	.....Hz	50	
Rate of voltage : Primary	.....V.	33000	
: Secondary	.....V.	400/230	
Vector group	-	Dyn 11	
Tapping Type	-	<b>Off circuit tap changer</b>	
No. of steps	-	5	
Percentage of tapping	-	$\pm 2 \times 2.5 \%$	
Impedance voltage at 75 C	.....%	4	
NO - Load current	.....%	1	
Ambient temperature	.....C	40	
Average Temperature rise of winding	.....C	65	
Average Temperature rise of top oil	.....C	60	
Noise level not more than	.....dB	56	
No - Load loss	.....Watt	1300	
Load loss at 75 C	.....Watt	12150	
Efficiency at P.F. = 1	: 25 % of rate power	.....%	98.94
	: 50 % of rate power	.....%	98.08
	: 75 % of rate power	.....%	98.79
	: 100 % of rate power	.....%	98.56
Voltage regulation	: at P.F. = 0.8	.....%	3.22
	: at P.F. = 0.9	.....%	2.71
	: at P.F. = 1.	.....%	1.17
Impulse Withstand Voltage	: Primary winding	.....KV.	125
	: Secondary winding	.....KV.	-
Power Frequency	: Primary winding	.....KV.	50
	: Secondary winding	.....KV.	3
Terminal arrangement	H.V. Side		Cable
	L.V. Side		Cable
Installation on			Pole mounted / Platform

**TCT** THAI CENTER TRANSFORMER CO.,LTD  
SPECIFICSTION THREE PHASE TRANSFORMER

Address : 67 / 1 Moo. 7 T. Bangkam A. Muang Nakhonpathom 73000

Tel . 081 - 8054856 , 034 - 219036 Fax 034 - 984092 <http://www.thaicentertransformer.com> e - mail : thaicenter671@hotmail.com

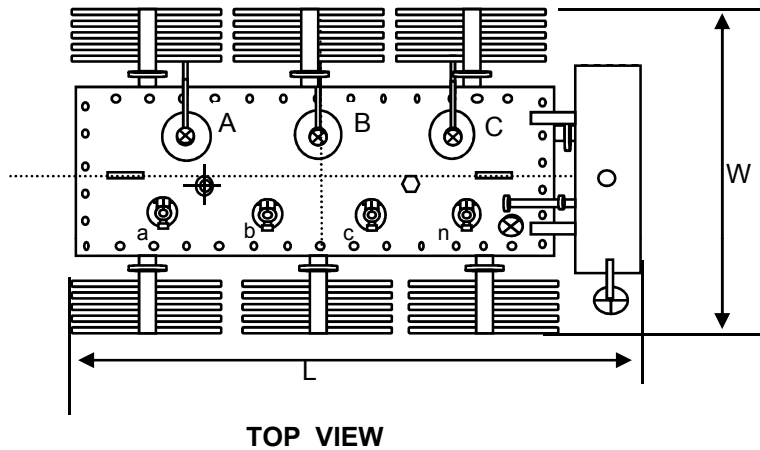
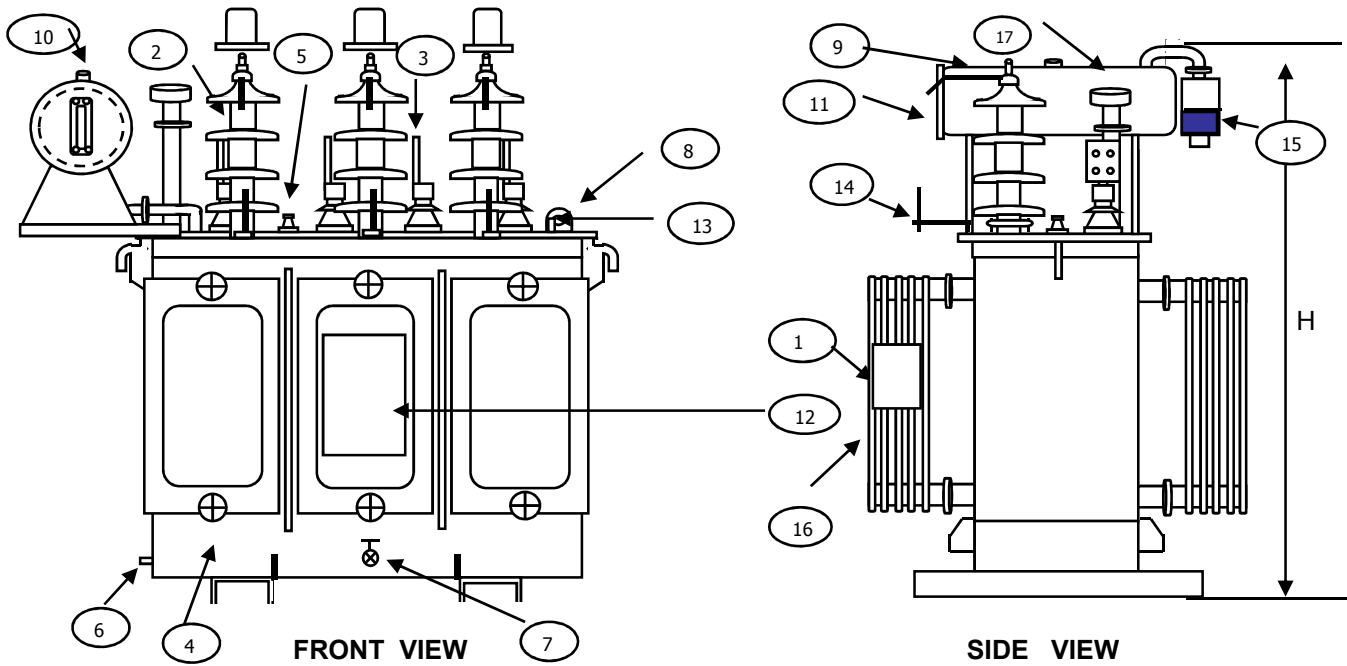
**Transformer Specification**

**Quote. Ref :**

**Customer :**

**Project :**

Rated power	<b>1000</b>
Type of transformer	<b>Oil immersed ( Conservator Tank )</b>
<b>Accessories</b>	
H.V. Bushing with terminal connector	Included
L.V. Bushing with terminal connector	Included
Grounding pad or earth terminal	Included
upper fillter press sampling valve	Included
Oil drain, filter press sampling valve	Included
Name plate	Included
Arcing Horn	Included
Skid Base	Included
Mechanical pressure relief device	Included ( without contact )
Oil level indicator	Included ( with contact )
	Included ( with contact )
	Included ( with contact )
<b>Testing</b>	
<b>- Routine test</b>	
Ratio test at each position of tap	Included
Polarity and phase relation test	Included
Resistance measurement	Included
No - Load loss and exciting current test	Included
Impedance and load loss test	Included
Applied potential test	Included
Induced potential test	Included
Insulation resistance test	Included
Oil test	Included
<b>- Specia test</b>	
Impulse withstand test	Included ( Thaicenter lab )
Temperature rise test	Included ( Thaicenter lab )



NO	DESCRIPTION	QTY.
1	NAMEPLATE WITH CONNECTION DIAGRAM	1
2	HV. BUSHING W / TERMINAL CONNECTOR	3
3	LV. BUSHING W / TERMINAL CONNECTOR	4
4	TANK	1
5	TAP CHANGE	1
6	EARTH TERMINAL	1
7	OIL DRAIN VALAE	1
8	LIFTING EYES ON THE COVER	2
9	CONSERVATOR TANK	1
10	OIL FILLING CAP	1
11	OIL LEVEL GAUGE	1
12	LOGO	1
13	THERMOMETER POCKET	1
14	ARCING HORN	3
15	DEHYDRATING BREATHER SILICAGEL	1
16	CORRUGTED FIN	1
17	PRESSURE RELIFE DEVICE	1

THAI CENTER TRANSFORMER CO.,LTD				
Dimension in millimetres			Total wt.	Oil
H	L	W	( Kgs.)	( Litres )
2080 mm	2050 mm	1050 mm	3250	860

<b>DESIGN No.</b>	1000TCT 0052001	<b>S/O No.</b>	A52001
-------------------	-----------------	----------------	--------

<b>NAME</b>	<b>TITLE :</b> OUTLINE DRAWING 1000 kVA. 3 Ph.Dyn 11 33000 - 400 / 230 v.
<b>DRN.BY</b>	
<b>CHK.BY</b>	
<b>APP. BY</b>	
<b>TYPE : CONSERVATOR TANK</b>	

**PRELIMINARY DRAWING**

This drawing is for estimation only showing approximate dimensions and should not be used for actual purposes

In case of order a definite drawing will be produced for formal approval