

SPECIFICATION
OIL IMMERSED TRANSFORMER
250 KVA. 3 Ph. 50 Hz
22000 - 416 / 240 V.

TCT THAI CENTER TRANSFORMER CO.,LTD

Address : 67 / 1 Moo. 7 T. Bangkam A. Maung Nakhonpathom 73000

Tel . 081 - 8054856 , 034 - 219036 Fax 034 - 984092 <http://www.thaicentertransformer.com> e - mail : thaicenter671@gmail.com

Transformer Specification

Quote. Ref :

Customer :

Project :

Rated powerKVA	250	
Type of transformer	-	Oil immersed (Hermetically sealed)	
Standard	-	IEC 60076	
Cooling System	-	ONAN	
No. Of phase	-	3	
FrequencyHz	50	
Rate of voltage : PrimaryV.	22000	
: SecondaryV.	416/240	
Vector group	-	Dyn 11	
Tapping Type	-	Off Circuit Tap Changer	
No. of steps	-	5	
Percentage of tapping	-	± 2 x 2.5 %	
Impedance voltage at 75 C%	4	
NO - Load current & Tolerance	A & .%	0.88 A & + 30 %	
Ambient temperatureC	50	
Average Temperature rise of windingk	55	
Average Temperature rise of top oilk	50	
Noise level not more thandB	56	
No - Load lossWatt	360	
Load loss at 75 CWatt	2750	
Efficiency at P.F. = 1	: 25 % of rate power%	98.94
	: 50 % of rate power%	99.17
	: 75 % of rate power%	98.79
	: 100 % of rate power%	98.77
Voltage regulation	: at P.F. = 0.8%	3.22
	: at P.F. = 0.9%	2.71
	: at P.F. = 1.%	1.17
Impulse Withstand Voltage	: Primary windingKV.	125
	: Secondary windingKV.	30
Power Frequency	: Primary windingKV.	50
	: Secondary windingKV.	10
Terminal arrangement H.V. Side		mm ²	35-95
	L.V. Side	mm ²	95-120
Installation on			Pole mounted / Platform

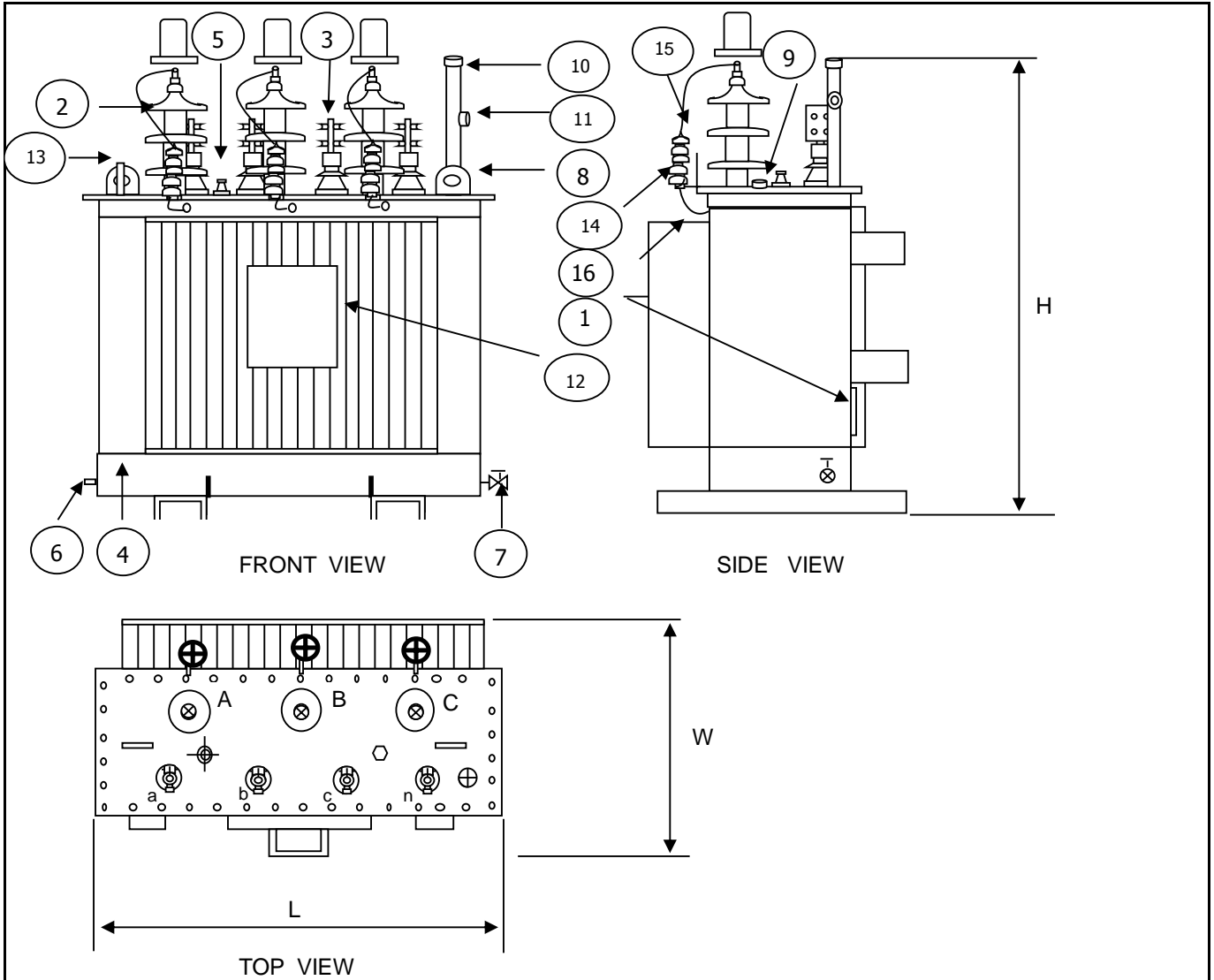
Transformer Specification

Quote. Ref :

Customer :

Project :

Rated power	250
Type of transformer	Oil immersed (Hermetically sealed)
Accessories	
H.V. Bushing with terminal connector	Included
L.V. Bushing with terminal connector	Included
Grounding pad or earth terminal	Included
upper filter press sampling valve	Included
Oil drain, filter press sampling valve	Included
Name plate	Included
Arcing Horn	Included
Skid Base	Included
Mechanical pressure relief device	Included
Oil level indicator	Included
Testing	
- Routine test	
Ratio test at each position of tap (IEC 60076-1)	Included
Polarity and phase relation test	Included
Resistance measurement (IEC 60076-1)	Included
No - Load loss and exciting current test	Included
Impedance and load loss test	Included
Applied potential test	Included
Induced potential test	Included
Insulation resistance test	Included
Oil test	Included
Type Tests	
Temperature rise test (IEC 60076-2)	Included
Full wave lightning impulse test (IEC 60076-2 and IEC 60076-3)	Included (with contact)
Measurement of no-load loss and current at 90% and 110% of reted voltage	Included (with contact)
- Specia test	
Short - cicuit withstand test (IEC 60076-5)	Included (with contact)



NO	DESCRIPTION	QTY.
1	NAMEPLATE WITH CONNECTION DIAGRAM	1
2	HV. BUSHING W / TERMINAL CONNECTOR	3
3	LV. BUSHING W / TERMINAL CONNECTOR	4
4	TANK	1
5	TAP CHANGE	1
6	EARTH TERMINAL	1
7	OIL DRAIN VALAE	1
8	LIFTING EYES ON THE COVER	2
9	OIL LEVEL INDICATOR	1
10	OIL FILLING PIPE	1
11	OIL LEVEL GAUGE	1
12	LOGO	1
13	THERMOMETER POCKET	1
14	SURGE ORRESTER(POLYMER HOUSING TYPE)(SUPPLIED BY PEA)	3
15	BROCKET FOR SURGE ORRESTER(SUPPLIED BY PEA)	3
16	FLEXIBLE COPPER INSULOTED GROUND LEOD(SUPPLIED BY PEA)	3

THAI CENTER TRANSFORMER CO.,LTD					
Dimension in millimetres				Total wt.	Oil
	H	L	W	(Kgs.)	(Litres)
	1400 mm	1350 mm	760 mm	1050	250
DESIGN No.	0250TCT010052			S/O No.	A010052
NAME				TITLE :	OUTLINE DRAWING
DRN.BY					250 kVA. 3 Ph. Dyn11
CHK.BY					22000 - 416 / 240
APP. BY				TYPE :	Hermeticall sealed tank

PRELIMINARY DRAWING

This drawing is for estimation only showing approximate dimensions and should not be used for actual purposes

In case of order a definite drawing will be produced for formal approval