

SPECIFICATION
OIL IMMERSED TRANSFORMER
630 KVA. 3 Ph. 50 Hz
22000 - 400 / 230 V.

TCT THAI CENTER TRANSFORMER CO.,LTD
SPECIFICATION THREE PHASE TRANSFORMER

Address : 67 / 1 Moo. 7 T. Bangkam A. Maung Nakhonpathom 73000

Tel. 081 - 8054856 , 034 - 219036 Fax 034 - 984092 <http://www.thaicentertransformer.com> e - mail : thaicenter671@hotmail.com

Transformer Specification

Quote. Ref :

Customer :

Project :

| | | | |
|-------------------------------------|-----------------------|---|-------------------------|
| Rated power |KVA | 630 | |
| Type of transformer | - | Oil immersed (Hermetically sealed) | |
| Standard | - | IEC 76 | |
| Cooling System | - | ONAN | |
| No. Of phase | - | 3 | |
| Frequency |Hz | 50 | |
| Rate of voltage : Primary |V. | 22000 | |
| : Secondary |V. | 400/230 | |
| Vector group | - | Dyn 11 | |
| Tapping Type | - | Off circuit tap changer | |
| No. of steps | - | 5 | |
| Percentage of tapping | - | $\pm 2 \times 2.5 \%$ | |
| Impedance voltage at 75 C |% | 4 | |
| NO - Load current |% | 1 | |
| Ambient temperature |C | 40 | |
| Average Temperature rise of winding |C | 65 | |
| Average Temperature rise of top oil |C | 60 | |
| Noise level not more than |dB | 56 | |
| No - Load loss |Watt | 1010 | |
| Load loss at 75 C |Watt | 5850 | |
| Efficiency at P.F. = 1 | : 25 % of rate power |% | 98.94 |
| | : 50 % of rate power |% | 98.08 |
| | : 75 % of rate power |% | 98.79 |
| | : 100 % of rate power |% | 98.56 |
| Voltage regulation | : at P.F. = 0.8 |% | 3.22 |
| | : at P.F. = 0.9 |% | 2.71 |
| | : at P.F. = 1. |% | 1.17 |
| Impulse Withstand Voltage | : Primary winding |KV. | 125 |
| | : Secondary winding |KV. | - |
| Power Frequency | : Primary winding |KV. | 50 |
| | : Secondary winding |KV. | 3 |
| Terminal arrangement | H.V. Side | | Cable |
| | L.V. Side | | Cable |
| Installation on | | | Pole mounted / Platform |

TCT THAI CENTER TRANSFORMER CO.,LTD
SPECIFICSTION THREE PHASE TRANSFORMER

Address : 67 / 1 Moo. 7 T. Bangkam A. Maung Nakhonpathom 73000

Tel . 081 - 8054856 , 034 - 219036 Fax 034 - 984092 <http://www.thaicentertransformer.com> e - mail : thaicenter671@hotmail.com

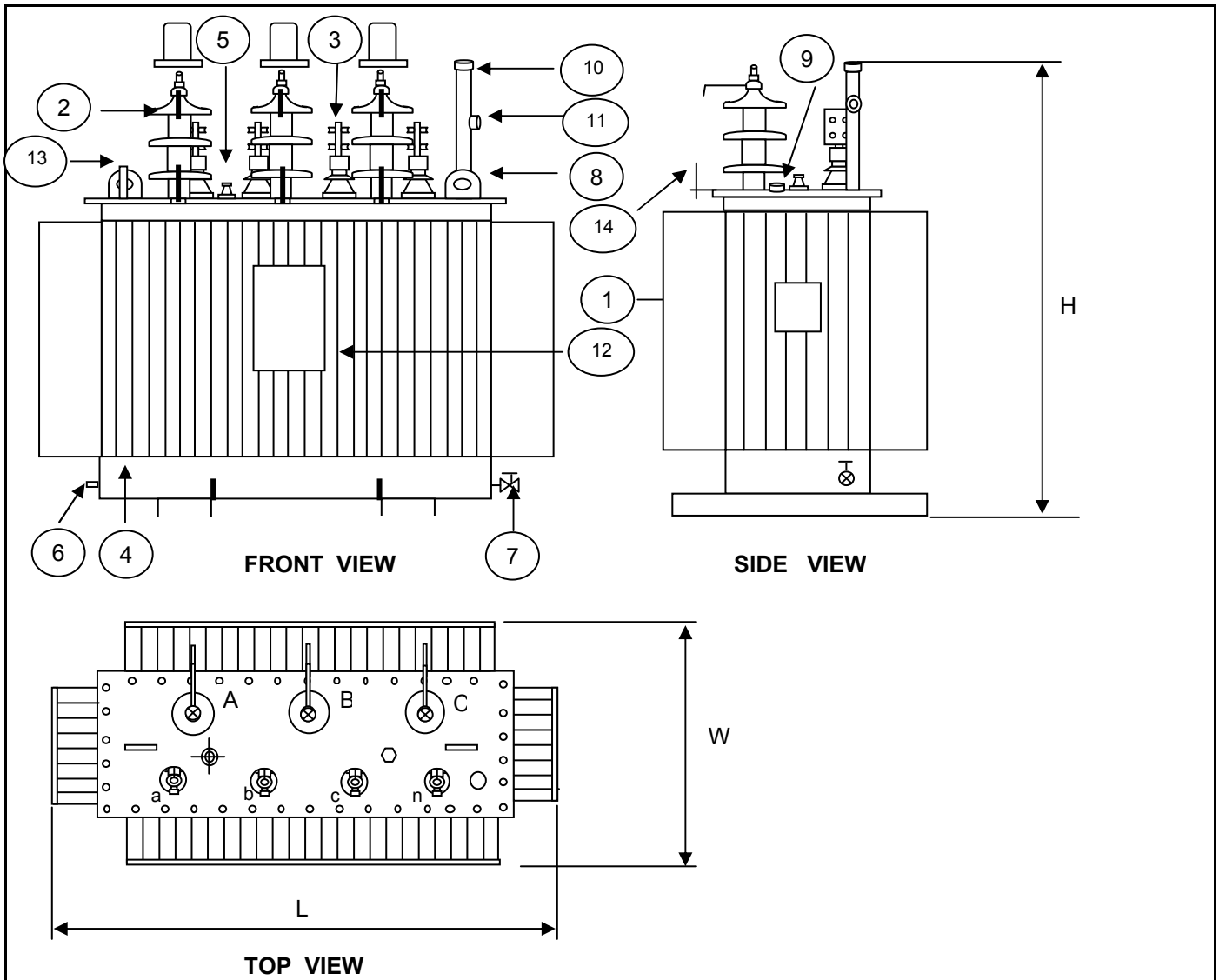
Transformer Specifiction

Quote. Ref :

Customer :

Project :

| | |
|--|---|
| Rated power | 630 |
| Type of transformer | Oil immersed (Hermetically Sealed) |
| Accessories | |
| H.V. Bushing with terminal connector | Included |
| L.V. Bushing with terminal connector | Included |
| Grounding pad or earth terminal | Included |
| upper fillter press sampling valve | Included |
| Oil drain, filter press sampling valve | Included |
| Name plate | Included |
| Arcing Horn | Included |
| Skid Base | Included |
| Mechanical pressure relief device | Included (without contact) |
| Oil level indicator | Included (with contact) |
| | Included (with contact) |
| | Included (with contact) |
| Testing | |
| - Routine test | |
| Ratio test at each position of tap | Included |
| Polarity and phase relation test | Included |
| Resistance measurement | Included |
| No - Load loss and exciting current test | Included |
| Impedance and load loss test | Included |
| Applied potential test | Included |
| Induced potential test | Included |
| Insulation resistance test | Included |
| Oil test | Included |
| - Specia test | |
| Impulse withstand test | Included (Thaicenter lab) |
| Temperature rise test | Included (Thaicenter lab) |



| NO | DESCRIPTION | QTY. |
|----|------------------------------------|------|
| 1 | NAMEPLATE WITH CONNECTION DIAGRAM | 1 |
| 2 | HV. BUSHING W / TERMINAL CONNECTOR | 3 |
| 3 | LV. BUSHING W / TERMINAL CONNECTOR | 4 |
| 4 | TANK | 1 |
| 5 | TAP CHANGE | 1 |
| 6 | EARTH TERMINAL | 1 |
| 7 | OIL DRAIN VALAE | 1 |
| 8 | LIFTING EYES ON THE COVER | 2 |
| 9 | OIL LEVEL INDICATOR | 1 |
| 10 | OIL FILLING PIPE | 1 |
| 11 | OIL LEVEL GAUGE | 1 |
| 12 | LOGO | 1 |
| 13 | THERMOMETER POCKET | 1 |
| 14 | ARCING HORN | 3 |

| THAI CENTER TRANSFORMER CO.,LTD | | | | |
|---------------------------------|---------|-------------------------------|-----------------|------------|
| Dimension in millimetres | | | Total wt. | Oil |
| H | L | W | (Kgs.) | (Litres) |
| 1780 mm | 1690 mm | 920 mm | 1770 | 585 |
| DESIGN No. 00630TCT001011 | | | S/O No. A001200 | |
| NAME | | TITLE : OUTLINE DRAWING | | |
| DRN.BY | | 630 kVA. 3 Ph. Dyn11 | | |
| CHK.BY | | 22000 - 400 / 230 | | |
| APP. BY | | TYPE : Hermetical sealed tank | | |

PRELIMINARY DRAWING

This drawing is for estimation only showing approximate dimensions and should not be used for actual purposes

In case of order a definite drawing will be produced for formal approval