

SPECIFICATION
OIL IMMERSED TRANSFORMER
100 KVA. 3 Ph. 50 Hz
22000 - 416 / 240 V.

TCT THAI CENTER TRANSFORMER CO.,LTD

Address : 67 / 1 Moo. 7 T. Bangkam A. Maung Nakhonpathom 73000

Tel . 081 - 8054856 , 034 - 219036 Fax 034 - 984092 <http://www.thaicentertransformer.com> e - mail : thaicenter671@gmail.com

Transformer Specification

Quote. Ref :

Customer :

Project :

Rated powerKVA	100
Type of transformer	-	Oil immersed (Hermetically sealed)
Standard	-	IEC 60076
Cooling System	-	ONAN
No. Of phase	-	3
FrequencyHz	50
Rate of voltage : PrimaryV.	22000
: SecondaryV.	416/240
Vector group	-	Dyn 11
Tapping Type	-	Off Circuit Tap Changer
No. of steps	-	5
Percentage of tapping	-	± 2 x 2.5 %
Impedance voltage at 75 C%	4
NO - Load current & Tolerance	A & .%	1.039 A & + 30 %
Ambient temperatureC	50
Average Temperature rise of windingk	55
Average Temperature rise of top oilk	50
Noise level not more thandB	56
No - Load lossWatt	180
Load loss at 75 CWatt	1450
Efficiency at P.F. = 1	: 25 % of rate power%	98.94
	: 50 % of rate power%	98.08
	: 75 % of rate power%	98.79
	: 100 % of rate power%	98.56
Voltage regulation	: at P.F. = 0.8%	3.22
	: at P.F. = 0.9%	2.71
	: at P.F. = 1.%	1.52
Impulse Withstand Voltage	: Primary windingKV.	125
	: Secondary windingKV.	30
Power Frequency	: Primary windingKV.	50
	: Secondary windingKV.	10
Terminal arrangement H.V. Side	mm ²	35-95
	L.V. Side mm ²	95-120
Installation on		Pole mounted / Platform

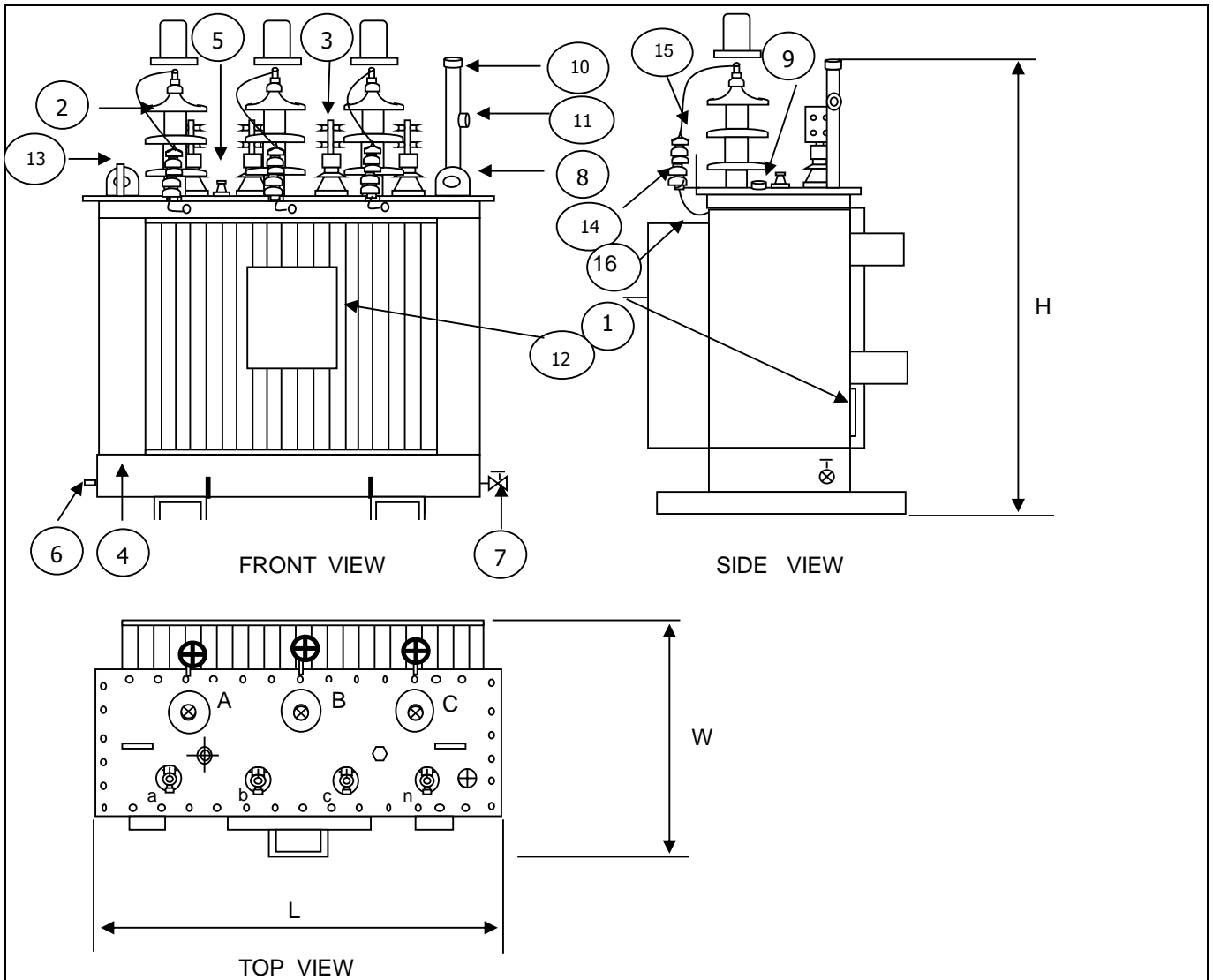
Transformer Specification

Quote. Ref :

Customer :

Project :

Rated power	100
Type of transformer	Oil immersed (Hermetically sealed)
Accessories	
H.V. Bushing with terminal connector	Included
L.V. Bushing with terminal connector	Included
Grounding pad or earth terminal	Included
upper filter press sampling valve	Included
Oil drain, filter press sampling valve	Included
Name plate	Included
Arcing Horn	Included
Skid Base	Included
Mechanical pressure relief device	Included
Oil level indicator	Included
Testing	
- Routine test	
Ratio test at each position of tap (IEC 60076-1)	Included
Polarity and phase relation test	Included
Resistance measurement (IEC 60076-1)	Included
No - Load loss and exciting current test	Included
Impedance and load loss test	Included
Applied potential test	Included
Induced potential test	Included
Insulation resistance test	Included
Oil test	Included
Type Tests	
Temperature rise test (IEC 60076-2)	Included
Full wave lightning impulse test (IEC 60076-2 and IEC 60076-3)	Included (with contact)
Measurement of no-load loss and current at 90% and 110% of reted voltage	Included (with contact)
- Specia test	
Short - cicuit withstand test (IEC 60076-5)	Included (with contact)



NO	DESCRIPTION	QTY.
1	NAMEPLATE WITH CONNECTION DIAGRAM	1
2	HV. BUSHING W / TERMINAL CONNECTOR	3
3	LV. BUSHING W / TERMINAL CONNECTOR	4
4	TANK	1
5	TAP CHANGE	1
6	EARTH TERMINAL	1
7	OIL DRAIN VALVE	1
8	LIFTING EYES ON THE COVER	2
9	OIL LEVEL INDICATOR	1
10	OIL FILLING PIPE	1
11	OIL LEVEL GAUGE	1
12	LOGO	1
13	THERMOMETER POCKET	1
14	SURGE ARRESTER(POLYMER HOUSING TYPE)(SUPPLIED BY PEA)	3
15	BROCKET FOR SURGE ARRESTER(SUPPLIED BY PEA)	3
16	FLEXIBLE COPPER INSULATED GROUND LEAD(SUPPLIED BY PEA)	3

THAI CENTER TRANSFORMER CO.,LTD					
Dimension in millimetres				Total wt.	Oil
	H	L	W	(Kgs.)	(Litres)
	1050 mm	850 mm	630 mm	358	95
DESIGN No.	0100PLE0010052			S/O No.	B0010052
NAME	TITLE : OUTLINE DRAWING				
DRN.BY	100 kVA. 3 Ph. Dyn11				
CHK.BY	22000 - 416 / 240				
APP. BY	TYPE : Hermetically sealed tank				

PRELIMINARY DRAWING

This drawing is for estimation only showing approximate dimensions and should not be used for actual purposes

In case of order a definite drawing will be produced for formal approval