

**SPECIFICATION**  
**OIL IMMERSED TRANSFORMER**  
**100 KVA. 3 Ph. 50 Hz**  
**22000 - 400 / 230 V.**

**TCT** THAI CENTER TRANSFORMER CO.,LTD  
SPECIFICSTION THREE PHASE TRANSFORMER

Address : 67 / 1 Moo. 7 T. Bangkam A. Maung Nakonpathom 73000

Tel . 081 - 8054856 , 034 - 219036 Fax 034 - 984092 <http://www.thaicentertransformer.com> e - mail : thaicenter671@hotmail.com

**Transformer Specification**

**Quote. Ref :**

**Customer :**

**Project :**

Rated power	.....KVA	<b>100</b>
Type of transformer	-	Oil immersed ( Hermetically sealed )
Standard	-	IEC 76
Cooling System	-	ONAN
No. Of phase	-	3
Frequency	.....Hz	50
Rate of voltage : Primary	.....V.	22000
: Secondary	.....V.	400/230
Vector group	-	Dyn 11
Tapping Type	-	<b>off circuit tap changer</b>
No. of steps	-	5
Percentage of tapping	-	+ 2 x 2.5 % - 2 x 2.5 %
Impedance voltage at 75 C	.....%	4
NO - Load current	.....%	1
Ambient temperature	.....C	40
Average Temperature rise of winding	.....C	65
Average Temperature rise of top oil	.....C	60
Noise level not more than	.....dB	56
No - Load loss	.....Watt	250
Load loss at 75 C	.....Watt	1550
Efficiency at P.F. = 1	: 25 % of rate power	98.94
	: 50 % of rate power	98.08
	: 75 % of rate power	98.79
	: 100 % of rate power	98.56
Voltage regulation	: at P.F. = 0.8	3.22
	: at P.F. = 0.9	2.71
	: at P.F. = 1.	1.17
Impulse Withstand Voltage	: Primary winding .....KV.	125
	: Secondary winding .....KV.	-
Power Frequency	: Primary winding .....KV.	50
	: Secondary winding .....KV.	3
Terminal arrangement H.V. Side		Cable
L.V. Side		Cable
Installation on		Pole mounted / Plantform

**TCT** THAI CENTER TRANSFORMER CO.,LTD  
SPECIFICSTION THREE PHASE TRANSFORMER

Address : 67 / 1 Moo. 7 T. Bangkam A. Maung Nakonpathom 73000

Tel . 081 - 8054856 , 034 - 219036 Fax 034 - 984092 <http://www.thaicentertransformer.com> e - mail : thaicenter671@hotmail.com

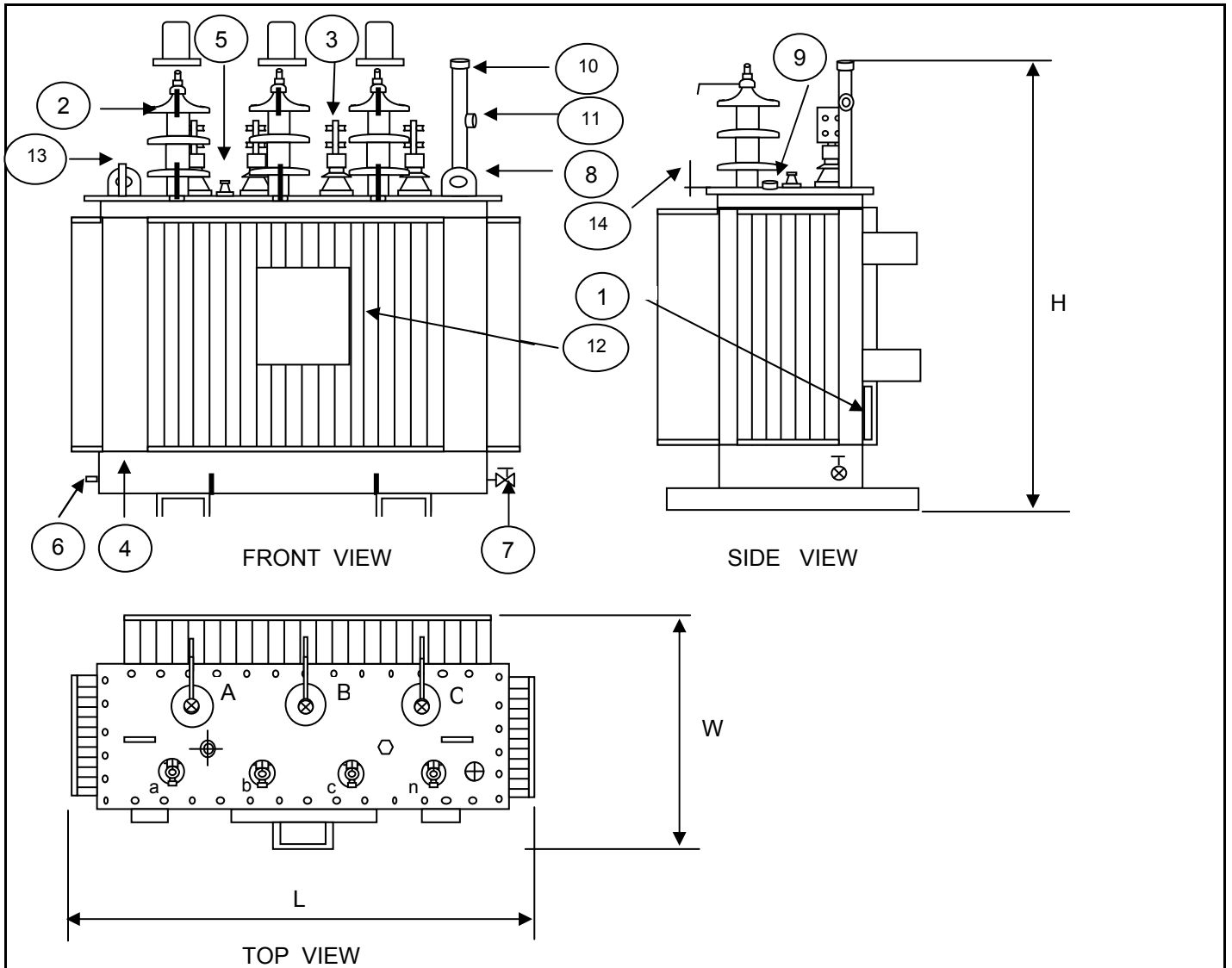
**Transformer Specification**

**Quote. Ref :**

**Customer :**

**Project :**

Rated power	100
Type of transformer	Oil immersed ( Hermetically sealed )
<b>Accessories</b>	
H.V. Bushing with terminal connector	Included
L.V. Bushing with terminal connector	Included
Grounding pad or earth terminal	Included
upper fillter press sampling valve	Included
Oil drain, filter press sampling valve	Included
Name plate	Included
Arcing Horn	Included
Skid Base	Included
Mechanical pressure relief device	Included ( without contact )
Oil level indicator	Included ( with contact )
	Included ( with contact )
	Included ( with contact )
<b>Testing</b>	
<b>- Routine test</b>	
Ratio test at each position of tap	Included
Polarity and phase relation test	Included
Resistance measurement	Included
No - Load loss and exciting current test	Included
Impedance and load loss test	Included
Applied potential test	Included
Induced potential test	Included
Insulation resistance test	Included
Oil test	Included
<b>- Specia test</b>	
Impulse withstand test	Included ( Thaicenter lab )
Temperature rise test	Included ( Thaicenter lab )



NO	DESCRIPTION	QTY.
1	NAMEPLATE WITH CONNECTION DIAGRAM	1
2	HV. BUSHING W / TERMINAL CONNECTOR	3
3	LV. BUSHING W / TERMINAL CONNECTOR	4
4	TANK	1
5	TAP CHANGE	1
6	EARTH TERMINAL	1
7	OIL DRAIN VALAE	1
8	LIFTING EYES ON THE COVER	2
9	OIL LEVEL INDICATOR	1
10	OIL FILLING PIPE	1
11	OIL LEVEL GAUGE	1
12	LOGO	1
13	THERMOMETER POCKET	1
14	ARCING HORN	3

THAI CENTER TRANSFORMER CO.,LTD					
Dimension in millimetres				Total wt.	Oil
	H	L	W	( Kgs.)	( Litres )
	1240 mm	920 mm	670 mm	585	140
DESIGN No.	00100TCT0010052			S/O No.	B0010052
NAME	TITLE : OUTLINE DRAWING				
DRN.BY	100 kVA. 3 Ph. Dyn11				
CHK.BY	22000 - 400 / 230				
APP. BY	TYPE : Hermetically sealed tank				

**PRELIMINARY DRAWING**

This drawing is for estimation only showing approximate dimensions and should not be used for actual purposes  
In case of order a definite drawing will be produced for formal approval