

### INSULATED RING TERMINAL

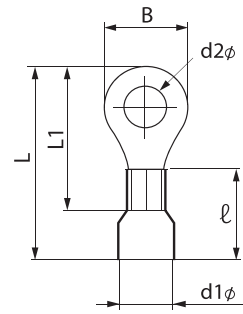
หางปลาแหวนหุ้มฉนวน

(RF TYPE)

Material: ETP-Copper

Surface: Tin plated

Insulation: PVC



Item No.	TIS Wire Size mm <sup>2</sup>	DIMENSIONS (MM.)						Color	AWG	DIN mm <sup>2</sup>	Q'TY in box
		d2φ	B	L	L1	l	D1φ				
RF 1.5-3	1.5	3.7	8.0	21.5	15.5	10.5	4.0	Red	22-16	0.5-1.5	2,000
RF 1.5-4		4.3									
RF 1.5-5		5.3									
RF 2.5-3	2.5	3.7	8.5	22.6	16.5	10.7	4.5	Blue	16-14	1.5-2.5	1,000
RF 2.5-4		4.3									
RF 2.5-5		5.3									
RF 2.5-6		6.4									
RF 4-4	4	4.3	8.8	25.2	18.4	13.5	6.0	Black	14-12	2.5-4	1,000
RF 4-5		5.3									
RF 4-6		6.4									12.0
RF 6-4	6	4.3	9.5	26.4	19.8	13.5	6.5	Yellow	12-10	4-6	500
RF 6-5		5.3									
RF 6-6		6.4	12.0	29.5	23.0						
RF 6-8		8.4	15.0	34.4	27.5						
RF 6-10		10.5									

### INSULATED SPADE TERMINAL

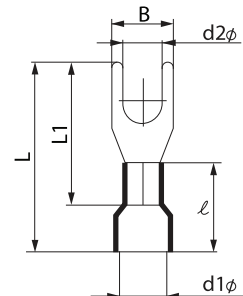
หางปลาแฉกหุ้มฉนวน

(YF TYPE)

Material: ETP-Copper

Surface: Tin plated

Insulation: PVC



Item No.	TIS Wire Size mm <sup>2</sup>	DIMENSIONS (MM.)						Color	AWG	DIN mm <sup>2</sup>	Q'TY in box
		d2φ	B	L	L1	l	D1φ				
YF 1.5-3S	1.5	3.3	5.7	22.0	16.0	10.5	4.0	Red	22-16	0.5-1.5	2,000
YF 1.5-4S		4.3	6.4								
YF 1.5-5S		5.3	7.2								
YF 2.5-3S	2.5	3.3	5.7	22.0	16.0	10.7	4.5	Blue	16-14	1.5-2.5	1,000
YF 2.5-4S		4.3	6.4								
YF 2.5-5S		5.3	7.2								
YF 4-4	4	4.3	8.0	25.5	18.3	13.5	6.0	Black	14-12	2.5-4	1,000
YF 4-5		5.3									
YF 6-4S	6	4.3	7.2	25.5	18.8	13.5	6.5	Yellow	12-10	4-6	500
YF 6-5S		5.3	8.2								
YF 6-6		6.4	12.0								