



ELECTRICAL TERMINALS AND CONNECTORS

เพิ่มความมั่นคงระบบไฟฟ้า ด้วยหางปลามาตรฐานสากล

MAKE THE PERFECT CONNECTION



Certificate ISO 9001:2015

COMPANY PROFILE

ประวัติบริษัท





TERMINAL LUGS CO., LTD. บริษัท เทอร์มินอล ลักส์ จำกัด

Terminal Lugs Co., Ltd. had been specialized in electrical terminals that company was established in 1989. It has been 34 years old for hardworking and practicing in the long experience to developing brand T.LUG and be leader in Thailand. Our electrical terminal offers the high quality as part of standard of a wire range industries and international requirement that is the reasonable price.

In our strong experience. T.LUG is ready to serving you in any field of electrical terminals to offering the good job in every year. Furthermore we would like to take this opportunity to set up a long-term business to serving you a perfect connection designed and featured



T.LUG®

CONTENT

สารบัญ

7



RING TERMINAL

หางปลากลมเปลือย

8



SPADE TERMINAL

หางปลาแฉกเปลือย

10



INSULATED RING TERMINAL

หางปลากลมหุ้มฉนวน

10



INSULATED SPADE TERMINAL

หางปลาแฉกหุ้มฉนวน

12



CABLE LUGS

หางปลารุ่นหนาทรงยุโรป (แบบท่อ)

13



COPPPER CRIMP SLEEVE

ข้อต่อสายแบบย้ำเปลือย (ยาวพิเศษ)

15



MALE DISCONNECTS

หางปลาหัวเสียบตัวผู้
(แบบแบนหุ้มฉนวน)

15



FEMALE DISCONNECTS

หางปลาหัวเสียบตัวเมีย
(แบบแบนหุ้มฉนวน)

15



**FULLY INSULATED
FEMALE DISCONNECTOR**

หางปลาหัวเสียบตัวเมีย
(แบบแบนหุ้มฉนวนเต็ม)

16



BUTT SPLICES

ข้อต่อสาย (แบบย้ำหุ้มฉนวน)

16



BULLET TERMINAL

หางปลาหัวเสียบตัวผู้
(แบบกลมหุ้มฉนวน)

16



BULLET SOCKETS

หางปลาหัวเสียบตัวเมีย
(แบบกลมหุ้มฉนวน)

18



INSULATED PIN TERMINAL

หางปลาหัวเสียบก้านไม้ขีด
(แบบกลมหุ้มฉนวน)

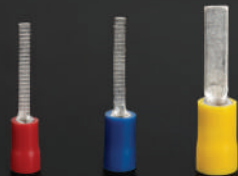
18



**FLAT BLADE
INSULATED TERMINAL**

หางปลาหัวเสียบกันไม้ขีด
(แบบแบนหุ้มฉนวน)

18



**FLAT BLADE INSULATED
TERMINAL**

หางปลาหัวเสียบกันไม้ขีด
(แบบแบนยาวหุ้มฉนวน)

20



CLOSED-END CONNECTORS

หัวต่อสายหุ้มฉนวนรูปหมวก
(แบบจางขุ่น)

20



WIRE-NUT CONNECTORS

ไวร์นัท สปริงเหล็มหุ้มฉนวน

20



QUICK SPLICES

ตลับหนีบสาย หุ้มฉนวน

22



CORD-END SLEEVE

ข้อต่อย้ายปลายสายหุ้มฉนวน (แบบเดี่ยว)

22



CORD-END TWIN SLEEVES

ข้อต่อย้ายปลายสายหุ้มฉนวน (แบบคู่)

23



**NON-INSULATED
CORD-END SLEEVE**

ข้อต่อย้ายปลายสาย(แบบเดี่ยวเปลือย)

25



**HIGH VOLTAGE
ELECTRICAL TERMINALS
SPLICE LONG BARREL**

ข้อต่อสายแรงสูงแบบย้ายเปลือย

26



**HIGH VOLTAGE ELECTRICAL
TERMINALS SHORT BARREL**

หางปลาแรงสูงชนิดรูปตัว

27



**HIGH VOLTAGE ELECTRICAL
TERMINALS LONG BARREL**

หางปลาแรงสูงชนิดรูปตัว

28



**HIGH VOLTAGE ANGLE 90°
ELECTRICAL TERMINALS
SHORT BARREL**

หางปลาแรงสูงชนิดรูปตัวมุม 90°

29



**HIGH VOLTAGE ANGLE 90°
ELECTRICAL TERMINALS
LONG BARREL**

หางปลาแรงสูงชนิดรูปตัวมุม 90°

30



**HIGH VOLTAGE OBTUSE
ANGLE 135° ELECTRICAL
TERMINALS SHORT BARREL**

หางปลาแรงสูงชนิดรูปตัวมุม 135°

31



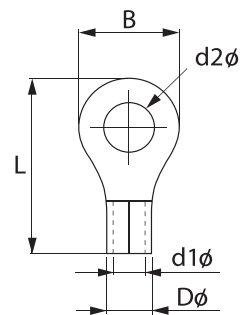
**HIGH VOLTAGE OBTUSE
ANGLE 135° ELECTRICAL
TERMINALS LONG BARREL**

หางปลาแรงสูงชนิดรูปตัวมุม 135°



RING TERMINAL
หางปลาถอมเปลือย
(R TYPE)

Material: Copper
 Surface: Tin plated



| Item No. | TIS Wire Size | DIMENSIONS (MM.) | | | | | AWG | DIN mm ² | Q'TY in box |
|----------|------------------|------------------|------|------|------|------|---------|---------------------|-------------|
| | | d2φ | B | L | Dφ | d1φ | | | |
| R 1.5-3 | 1.5 | 3.7 | 8.0 | 15.5 | 3.3 | 1.7 | 22-16 | 0.5-1.5 | 2,500 |
| R 1.5-4 | | 4.3 | | | | | | | |
| R 1.5-5 | | 5.3 | | | | | | | |
| R 2.5-3 | 2.5 | 3.7 | 8.5 | 16.5 | 3.9 | 2.3 | 16-14 | 1.5-2.5 | 2,500 |
| R 2.5-4 | | 4.3 | | | | | | | |
| R 2.5-5 | | 5.3 | | | | | | | |
| R 2.5-6 | | 6.4 | | | | | | | 12.0 |
| R 4-4 | 4 | 4.3 | 8.8 | 18.4 | 5.0 | 3.0 | 14-12 | 2.5-4 | 2,000 |
| R 4-5 | | 5.3 | | | | | | | |
| R 4-6 | | 6.4 | | | | | | | |
| R 6-4 | 6 | 4.3 | 9.5 | 19.8 | 5.4 | 3.4 | 12-10 | 4-6 | 2,000 |
| R 6-5 | | 5.3 | | | | | | | |
| R 6-6 | | 6.4 | 12.0 | 23.0 | | | | | 1,000 |
| R 6-8 | | 8.4 | 15.0 | 27.5 | | | | | |
| R 6-10 | | 10.5 | | | | | | | |
| R 10-6 | 10 | 6.4 | 12.0 | 23.8 | 6.9 | 4.5 | 8 | 10 | 1,000 |
| R 10-8 | | 8.4 | 15.0 | 30.0 | | | | | 800 |
| R 10-10 | | 10.5 | | | | | | | |
| R 16-6 | 16 | 6.4 | 12.0 | 28.5 | 8.8 | 5.8 | 6 | 16 | 500 |
| R 16-8 | | 8.4 | 15.2 | 32.0 | | | | | |
| R 16-10 | | 10.5 | | | | | | | |
| R 25-6 | 25 | 6.4 | 16.5 | 34.5 | 11.3 | 7.7 | 4 | 25 | 250 |
| R 25-8 | | 8.4 | | | | | | | |
| R 25-10 | | 10.5 | | | | | | | |
| R 25-12 | | 13.0 | 22.0 | 42.5 | | | | | 200 |
| R 35-6 | 35 | 6.4 | 19.4 | 38.7 | 11.8 | 8.2 | 2 | 35 | 200 |
| R 35-8 | | 8.4 | | | | | | | |
| R 35-10 | | 10.5 | | | | | | | |
| R 35-12 | | 13.0 | | | | | | | |
| R 50-8S | 50 | 8.4 | 16.0 | 38.5 | 13.4 | 9.8 | 1/0 | 50 | 200 |
| R 50-10S | | 10.5 | | | | | | | |
| R 50-6 | | 6.4 | 22.0 | 42.7 | | | | | |
| R 50-8 | | 8.4 | | | | | | | |
| R 50-10 | | 10.5 | | | | | | | |
| R 50-12 | | 13.0 | | | | | | | |
| R 70-8 | 70 | 8.4 | 22.0 | 49.7 | 15.4 | 11.4 | 2/0 | 70 | 100 |
| R 70-10 | | 10.5 | | | | | | | |
| R 70-12 | | 13.0 | | | | | | | |
| R 95-6 | 95 | 6.4 | 24.0 | 51.5 | 17.5 | 13.5 | 4/0 | 95 | 100 |
| R 95-8 | | 8.4 | | | | | | | |
| R 95-10 | | 10.5 | | | | | | | |
| R 95-12 | | 13.0 | | | | | | | |
| R 120-8 | 120 | 8.4 | 27.0 | 54.4 | 19.4 | 15.0 | 250 MCM | 120 | 50 |
| R 120-10 | | 10.5 | | | | | | | |
| R 120-12 | | 13.0 | | | | | | | |
| R 120-14 | | 15.0 | 32.0 | 68.5 | | | | | |
| R 120-16 | | 17.0 | | | | | | | |

| Item No. | TIS Wire Size | DIMENSIONS (MM.) | | | | | AWG | DIN mm ² | Q'TY in box |
|----------|------------------|------------------|------|------|------|------|----------------|---------------------|-------------|
| | | d2∅ | B | L | D∅ | d1∅ | | | |
| R 150-6 | 150 | 6.4 | 28.5 | 56.0 | 22.0 | 16.8 | 250-300 MCM | 150 | 50 |
| R 150-8 | | 8.4 | | | | | | | |
| R 150-10 | | 10.5 | | | | | | | |
| R 150-12 | | 13.0 | | | | | | | |
| R 185-12 | 185 | 13.0 | 36.0 | 67.5 | 26.8 | 20.3 | 300-500 MCM | 185 | 25 |
| R 185-14 | | 15.0 | | | | | | | |
| R 185-16 | | 17.0 | | | | | | | |
| R 185-18 | | 19.0 | | | | | | | |
| R 185-20 | 21.0 | 81.0 | | | | | | | |
| R 240-12 | 240 | 13.0 | 38.5 | 70.3 | 29.0 | 22.0 | 350-500 MCM | 240 | 25 |
| R 240-14 | | 15.0 | | | | | | | |
| R 240-16 | | 17.0 | | | | | | | |
| R 240-18 | | 19.0 | | | | | | | |
| R 240-20 | 21.0 | 86.7 | | | | | | | |
| R 300-12 | 300 | 13.0 | 43.2 | 72.0 | 33.0 | 25.0 | 600 MCM | 300 | 20 |
| R 300-14 | | 15.0 | | | | | | | |
| R 300-16 | | 17.0 | | | | | | | |
| R 300-18 | | 19.0 | | | | | | | |
| R 300-20 | 21.0 | 91.0 | 15 | | | | | | |
| R 400-12 | 400 | 13.0 | 50.4 | 88.3 | 38.4 | 29.3 | 800 MCM | 400 | 10 |
| R 400-14 | | 15.0 | | | | | | | |
| R 400-16 | | 17.0 | | | | | | | |
| R 400-18 | | 19.0 | | | | | | | |
| R 400-20 | 21.0 | 105.5 | | | | | | | |

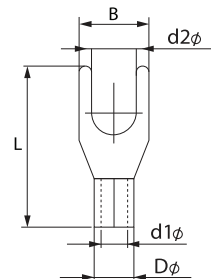
SPADE TERMINAL

หางปลาเอกป्लीอ

(Y TYPE)

Material: ETP-Copper

Surface: Tin plated



| Item No. | TIS Wire Size | DIMENSIONS (MM.) | | | | | AWG | DIN mm ² | Q'TY in box |
|----------|------------------|------------------|------|------|-----|-----|-------|---------------------|-------------|
| | | d2∅ | B | L | D∅ | d1∅ | | | |
| Y 1.5-3S | 1.5 | 3.3 | 5.7 | 16.0 | 3.3 | 1.7 | 22-16 | 0.5-1.5 | 2,500 |
| Y 1.5-4S | | 4.3 | 6.4 | | | | | | |
| Y 1.5-5S | | 5.3 | 7.2 | | | | | | |
| Y 2.5-3S | 2.5 | 3.3 | 5.7 | 16.0 | 3.9 | 2.3 | 16-14 | 1.5-2.5 | 2,500 |
| Y 2.5-4S | | 4.3 | 6.4 | | | | | | |
| Y 2.5-5S | | 5.3 | 7.2 | | | | | | |
| Y 4-4 | 4 | 4.3 | 8.0 | 18.3 | 5.0 | 3.0 | 14-12 | 2.5-4 | 2,000 |
| Y 4-5 | | 5.3 | | | | | | | |
| Y 6-4S | 6 | 4.3 | 7.2 | 18.8 | 5.4 | 3.4 | 12-10 | 4-6 | 2,000 |
| Y 6-5S | | 5.3 | 8.2 | | | | | | |
| Y 6-6 | | 6.4 | 12.0 | | | | | | 24.0 |



INSULATED RING TERMINAL

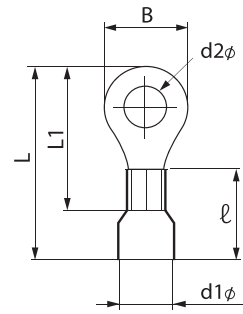
หางปลาแหวนหุ้มฉนวน

(RF TYPE)

Material: ETP-Copper

Surface: Tin plated

Insulation: PVC



| Item No. | TIS Wire Size mm ² | DIMENSIONS (MM.) | | | | | | Color | AWG | DIN mm ² | Q'TY in box |
|----------|-------------------------------|------------------|------|------|------|------|-----|--------|-------|---------------------|-------------|
| | | d2φ | B | L | L1 | l | D1φ | | | | |
| RF 1.5-3 | 1.5 | 3.7 | 8.0 | 21.5 | 15.5 | 10.5 | 4.0 | Red | 22-16 | 0.5-1.5 | 2,000 |
| RF 1.5-4 | | 4.3 | | | | | | | | | |
| RF 1.5-5 | | 5.3 | | | | | | | | | |
| RF 2.5-3 | 2.5 | 3.7 | 8.5 | 22.6 | 16.5 | 10.7 | 4.5 | Blue | 16-14 | 1.5-2.5 | 1,000 |
| RF 2.5-4 | | 4.3 | | | | | | | | | |
| RF 2.5-5 | | 5.3 | | | | | | | | | |
| RF 2.5-6 | | 6.4 | | | | | | | | | |
| RF 4-4 | 4 | 4.3 | 8.8 | 25.2 | 18.4 | 13.5 | 6.0 | Black | 14-12 | 2.5-4 | 1,000 |
| RF 4-5 | | 5.3 | | | | | | | | | |
| RF 4-6 | | 6.4 | | | | | | | | | |
| RF 6-4 | 6 | 4.3 | 9.5 | 26.4 | 19.8 | 13.5 | 6.5 | Yellow | 12-10 | 4-6 | 500 |
| RF 6-5 | | 5.3 | | | | | | | | | |
| RF 6-6 | | 6.4 | 12.0 | 29.5 | 23.0 | | | | | | |
| RF 6-8 | | 8.4 | | | | | | | | | |
| RF 6-10 | | 10.5 | | | | | | | | | |

INSULATED SPADE TERMINAL

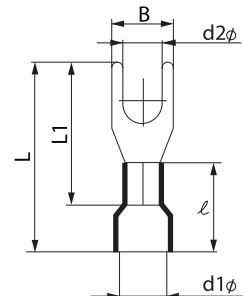
หางปลาแฉกหุ้มฉนวน

(YF TYPE)

Material: ETP-Copper

Surface: Tin plated

Insulation: PVC



| Item No. | TIS Wire Size mm ² | DIMENSIONS (MM.) | | | | | | Color | AWG | DIN mm ² | Q'TY in box |
|-----------|-------------------------------|------------------|------|------|------|------|-----|--------|-------|---------------------|-------------|
| | | d2φ | B | L | L1 | l | D1φ | | | | |
| YF 1.5-3S | 1.5 | 3.3 | 5.7 | 22.0 | 16.0 | 10.5 | 4.0 | Red | 22-16 | 0.5-1.5 | 2,000 |
| YF 1.5-4S | | 4.3 | 6.4 | | | | | | | | |
| YF 1.5-5S | | 5.3 | 7.2 | | | | | | | | |
| YF 2.5-3S | 2.5 | 3.3 | 5.7 | 22.0 | 16.0 | 10.7 | 4.5 | Blue | 16-14 | 1.5-2.5 | 1,000 |
| YF 2.5-4S | | 4.3 | 6.4 | | | | | | | | |
| YF 2.5-5S | | 5.3 | 7.2 | | | | | | | | |
| YF 4-4 | 4 | 4.3 | 8.0 | 25.5 | 18.3 | 13.5 | 6.0 | Black | 14-12 | 2.5-4 | 1,000 |
| YF 4-5 | | 5.3 | | | | | | | | | |
| YF 6-4S | 6 | 4.3 | 7.2 | 25.5 | 18.8 | 13.5 | 6.5 | Yellow | 12-10 | 4-6 | 500 |
| YF 6-5S | | 5.3 | 8.2 | | | | | | | | |
| YF 6-6 | | 6.4 | 12.0 | | | | | | | | |



CABLE LUGS

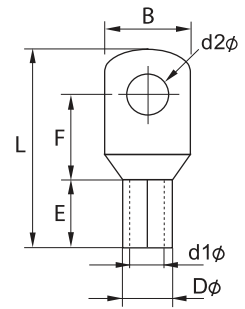
ทางปลารุ่นหนาทรงยุโรป (แบบท่อ)

(CL TYPE)

Material: ETP-Copper tube

Cu 99% up

Surface: Tin plated



| Item No. | TIS Wire Size mm ² | DIMENSIONS (MM.) | | | | | | | AWG | DIN mm ² | Q'TY in box |
|-----------|-------------------------------|------------------|------|------|------|------|------|-------|----------|---------------------|-------------|
| | | d2Ø | d1Ø | DØ | B | E | F | L | | | |
| CL 10-6 | 10 | 6.4 | 4.5 | 6.2 | 10.0 | 9.0 | 10.0 | 25.0 | 8.0 | 10 | 1,000 |
| CL 10-8 | | 8.4 | | | 12.6 | | | | | | |
| CL 16-6 | 16 | 6.4 | 5.4 | 7.1 | 10.0 | 12.0 | 11.0 | 30.0 | 6.0 | 16 | 500 |
| CL 16-8 | | 8.4 | | | 12.6 | | | | | | |
| CL 25-6 | 25 | 6.4 | 6.8 | 8.8 | 12.6 | 12.0 | 11.0 | 30.0 | 4.0 | 25 | 400 |
| CL 25-8 | | 8.4 | | | 15.0 | | | 31.0 | | | |
| CL 25-10 | | 10.5 | | | | | | | | | |
| CL 35-6 | 35 | 6.4 | 8.2 | 10.6 | 15.0 | 12.0 | 14.0 | 35.0 | 2.0 | 35 | 300 |
| CL 35-8 | | 8.4 | | | 18.6 | | | | | | |
| CL 35-10 | | 10.5 | | | | | | | | | |
| CL 35-12 | | 13.0 | | | | | | | | | |
| CL 50-8 | 50 | 8.4 | 9.5 | 12.4 | 18.0 | 16.0 | 17.0 | 43.0 | 1/0 | 50 | 200 |
| CL 50-10 | | 10.5 | | | 19.0 | | | | | | |
| CL 50-12 | | 13.0 | | | | | | | | | |
| CL 70-8 | 70 | 8.4 | 11.2 | 14.7 | 21.0 | 18.0 | 20.0 | 50.0 | 2/0 | 70 | 100 |
| CL 70-10 | | 10.5 | | | | | | | | | |
| CL 70-12 | | 13.0 | | | | | | | | | |
| CL 95-8 | 95 | 8.4 | 13.5 | 17.4 | 25.5 | 20.0 | 22.0 | 55.0 | 4/0 | 95 | 80 |
| CL 95-10 | | 10.5 | | | | | | | | | |
| CL 95-12 | | 13.0 | | | | | | | | | |
| CL 120-10 | 120 | 10.5 | 15.0 | 19.4 | 28.0 | 22.0 | 24.0 | 60.0 | 250 MCM | 120 | 50 |
| CL 120-12 | | 13.0 | | | | | | | | | |
| CL 120-14 | | 15.0 | | | | | | | | | |
| CL 120-16 | | 17.0 | | | | | | | | | |
| CL 150-10 | *,** | 10.5 | 16.5 | 21.2 | 30.5 | 26.0 | 27.0 | 69.0 | 300 MCM | 150 | 50 |
| CL 150-12 | 150 | 13.0 | | | | | | | | | |
| CL 150-14 | 15.0 | | | | | | | | | | |
| CL 150-16 | 17.0 | | | | | | | | | | |
| CL 185-12 | 185 | 13.0 | 18.5 | 23.5 | 34.0 | 32.0 | 29.0 | 78.0 | 350 MCM | 185 | 32 |
| CL 185-14 | | 15.0 | | | | | | | | | |
| CL 185-16 | | 17.0 | | | | | | | | | |
| CL 240-12 | 240 | 13.0 | 21.5 | 27.0 | 39.5 | 38.0 | 34.0 | 92.0 | 500 MCM | 240 | 20 |
| CL 240-14 | | 15.0 | | | | | | | | | |
| CL 240-16 | | 17.0 | | | | | | | | | |
| CL 300-12 | * | 13.0 | 23.5 | 30.0 | 43.5 | 42.0 | 37.0 | 101.0 | 600 MCM | 300 | 15 |
| CL 300-14 | 300 | 15.0 | | | | | | | | | |
| CL 300-16 | 17.0 | | | | | | | | | | |
| CL 300-18 | 19.0 | | | | | | | | | | |
| CL 400-14 | * | 15.0 | 27.0 | 35.0 | 50.8 | 44.0 | 44.0 | 114.0 | 800 MCM | 400 | 7 |
| CL 400-16 | 400 | 17.0 | | | | | | | | | |
| CL 400-18 | 19.0 | | | | | | | | | | |
| CL 400-20 | 21.0 | | | | | | | | | | |
| CL 500-12 | 500 | 13.0 | 30.0 | 39.0 | 56.0 | 48.0 | 48.0 | 124.0 | 1000 MCM | 500 | 5 |
| CL 500-16 | | 17.0 | | | | | | | | | |
| CL 500-18 | | 19.0 | | | | | | | | | |
| CL 500-20 | | 21.0 | | | | | | | | | |

หมายเหตุ (Remark): * สามารถนำไปใช้ในงานติดตั้งสายไฟชนิดเกลียวธรรมดาและชนิดเกลียวอัดแน่น (Use for stranded and compact)

** สามารถนำไปใช้กับสายไฟขนาด 185 มม² ชนิดเกลียวอัดแน่น (Use for compact 185mm²)

COPPER CRIMP SLEEVE

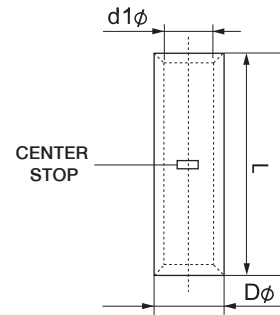
ข้อต่อสายแบบย้ำปลี้อย (ยาวพิเศษ)

(CSL TYPE)

Material: ETP-Copper tube

Cu 99% up

Surface: Tin plated



| Item No. | TIS Wire Size mm ² | DIMENSIONS (MM.) | | | AWG | DIN mm ² | Q'TY in box |
|----------|-------------------------------|------------------|------|-----|----------|---------------------|-------------|
| | | d1Ø | DØ | L | | | |
| CSL 10 | 10 | 4.5 | 6.2 | 25 | 8 | 10 | 700 |
| CSL 16 | 16 | 5.4 | 7.1 | 33 | 6 | 16 | 500 |
| CSL 25 | 25 | 6.8 | 8.8 | 33 | 4 | 25 | 300 |
| CSL 35 | 35 | 8.2 | 10.6 | 38 | 2 | 35 | 200 |
| CSL 50 | 50 | 9.5 | 12.4 | 46 | 1/0 | 50 | 160 |
| CSL 70 | 70 | 11.2 | 14.7 | 53 | 2/0 | 70 | 100 |
| CSL 95 | 95 | 13.5 | 17.4 | 58 | 36617.0 | 95 | 60 |
| CSL 120 | 120 | 15.0 | 19.4 | 63 | 250 MCM | 120 | 50 |
| CSL 150 | *,** 150 | 16.5 | 21.2 | 72 | 300 MCM | 150 | 35 |
| CSL 185 | 185 | 18.5 | 23.5 | 82 | 350 MCM | 185 | 25 |
| CSL 240 | 240 | 21.5 | 27.0 | 96 | 500 MCM | 240 | 20 |
| CSL 300 | 300 | 23.5 | 30.0 | 105 | 600 MCM | 300 | 12 |
| CSL 400 | 400 | 27.0 | 35.0 | 105 | 800 MCM | 400 | 8 |
| CSL 500 | 500 | 30.0 | 39.0 | 105 | 1000 MCM | 500 | 7 |

หมายเหตุ (Remark): * สามารถนำไปใช้ในงานติดตั้งสายไฟชนิดตีเกลียวธรรมดาและชนิดตีเกลียวอัดแน่น (Use for stranded and compact)

** สามารถนำไปใช้กับสายไฟขนาด 185 มม² ชนิดตีเกลียวอัดแน่น (Use for compact 185mm²)



MALE DISCONNECTS

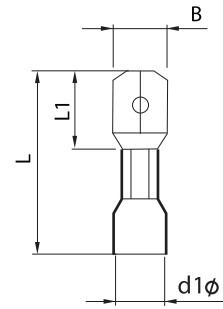
หางปลาหัวเสียบตัวผู้ (แบบแบนหัวฉนวน)

(V TYPE)

Material: Brass

Surface: Tin plated

Insulation: PVC



| Item No. | TIS Wire Size mm ² | Color | DIMENSIONS (MM.) | | | | AWG | DIN mm ² | Q'TY in box |
|----------|-------------------------------|--------|------------------|------|------|-----|-------|---------------------|-------------|
| | | | B | L | L1 | d1φ | | | |
| V 1.5-7B | .250X.032" 6.35X0.8mm. | Red | 6.3 | 20.7 | 11.0 | 3.4 | 22-16 | 0.5-1.5 | 1,000 |
| V 2.5-7B | | Blue | 6.3 | 20.3 | 11.0 | 4.0 | 16-14 | 1.5-2.5 | 1,000 |
| V 6-7B | | Yellow | 6.3 | 23.8 | 11.0 | 5.5 | 12-10 | 4-6 | 500 |

FEMALE DISCONNECTS

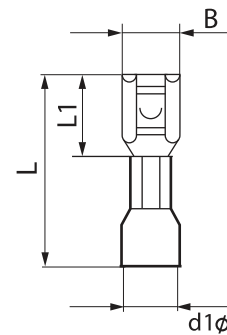
หางปลาหัวเสียบตัวเมีย (แบบแบนหัวฉนวน)

(V TYPE)

Material: Brass

Surface: Tin plated

Insulation: PVC



| Item No. | TIS Wire Size mm ² | Color | DIMENSIONS (MM.) | | | | AWG | DIN mm ² | Q'TY in box |
|----------|-------------------------------|--------|------------------|------|------|-----|-------|---------------------|-------------|
| | | | B | L | L1 | d1φ | | | |
| V 1.5-7A | .250X.032" 6.35X0.8mm. | Red | 6.8 | 20.5 | 11.0 | 3.5 | 22-16 | 0.5-1.5 | 1,000 |
| V 2.5-7A | | Blue | 6.8 | 20.5 | 11.0 | 4.2 | 16-14 | 1.5-2.5 | 1,000 |
| V 6-7A | | Yellow | 6.8 | 23.4 | 11.0 | 5.5 | 12-10 | 4-6 | 500 |

FULLY INSULATED FEMALE DISCONNECTOR

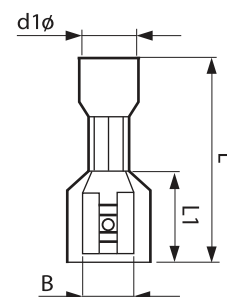
หางปลาหัวเสียบตัวเมีย (แบบหัวฉนวนเต็ม)

(PV TYPE)

Material: Brass

Surface: Tin plated

Insulation: PVC



| Item No. | TIS Wire Size mm ² | Color | DIMENSIONS (MM.) | | | | AWG | DIN mm ² | Q'TY in box |
|-----------|-------------------------------|--------|------------------|------|------|-----|-------|---------------------|-------------|
| | | | B | L | L1 | d1φ | | | |
| PV 1.5-7A | .250X.032" 6.35X0.8mm. | Red | 6.7 | 22.0 | 12.2 | 3.7 | 22-16 | 0.5-1.5 | 1,000 |
| PV 2.5-7A | | Blue | 6.7 | 22.2 | 12.2 | 4.4 | 16-14 | 1.5-2.5 | 1,000 |
| PV 6-7A | | Yellow | 6.7 | 24.2 | 12.2 | 5.5 | 12-10 | 4-6 | 500 |

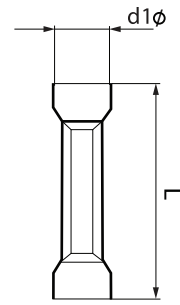
BUTT SPLICE

ข้อต่อสาย (แบบย้ำหุ้มฉนวน)
(BF TYPE)

Material: Copper

Surface: Tin plated

Insulation: PVC



| Item No. | TIS Wire Size mm ² | Color | DIMENSIONS (MM.) | | AWG | DIN mm ² | Q'TY in box |
|----------|-------------------------------|--------|------------------|------|-------|---------------------|-------------|
| | | | d1φ | L | | | |
| BF 1.5 | 1.5 | Red | 4.0 | 26.2 | 22-16 | 0.5-1.5 | 1,000 |
| BF 2.5 | 2.5 | Blue | 4.5 | 26.5 | 16-14 | 1.5-2.5 | 1,000 |
| BF 6 | 6.0 | Yellow | 6.0 | 26.5 | 12-10 | 4-6 | 500 |

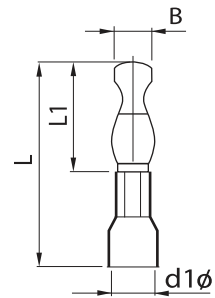
BULLET TERMINAL

หางปลาหัวเสียบตัวผู้ (แบบกลมหุ้มฉนวน)
(F TYPE)

Material: Brass

Surface: Tin plated

Insulation: PVC



| Item No. | TIS Wire Size mm ² | Color | DIMENSIONS (MM.) | | | | AWG | DIN mm ² | Q'TY in box |
|----------|-------------------------------|--------|------------------|------|------|-----|---------|---------------------|-------------|
| | | | B | L | L1 | d1φ | | | |
| F 1.5 B | 1.5 | Red | 4.0 | 21.0 | 11.0 | 3.3 | 0.5-1.5 | 1,000 | |
| F 2.5 B | 2.5 | Blue | 5.0 | 21.0 | 11.0 | 4.3 | 1.5-2.5 | 1,000 | |
| F 6 B | 6 | Yellow | 5.0 | 23.0 | 11.0 | 5.5 | 4-6 | 500 | |

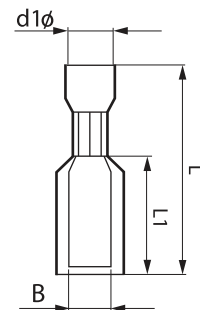
BULLET SOCKETS

หางปลาหัวเสียบตัวเมีย (แบบกลมหุ้มฉนวน)
(F TYPE)

Material: Brass

Surface: Tin plated

Insulation: PVC



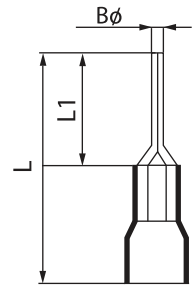
| Item No. | TIS Wire Size mm ² | Color | DIMENSIONS (MM.) | | | | AWG | DIN mm ² | Q'TY in box |
|----------|-------------------------------|--------|------------------|------|------|-----|---------|---------------------|-------------|
| | | | B | L | L1 | d1φ | | | |
| F 1.5 A | 1.5 | Red | 3.9 | 23.0 | 13.5 | 3.3 | 0.5-1.5 | 500 | |
| F 2.5 A | 2.5 | Blue | 4.9 | 23.5 | 13.5 | 4.5 | 1.5-2.5 | 500 | |
| F 6 A | 6 | Yellow | 4.9 | 23.5 | 13.5 | 5.5 | 4-6 | 500 | |



INSULATED PIN TERMINAL

หางปลาหัวเสียบก้านไม้จืด (แบบกลมหัวฉนวน)
(PIN TYPE)

Material: Copper
Surface: Tin plated
Insulation: PVC

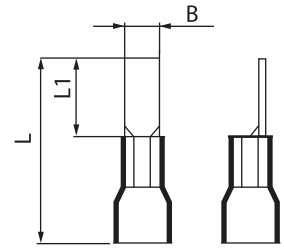


| Item No. | TIS Wire Size mm ² | Color | DIMENSIONS (MM.) | | | AWG | DIN mm ² | Q'TY in box |
|------------|-------------------------------|--------|------------------|------|------|-------|---------------------|-------------|
| | | | Bø | L | L1 | | | |
| PIN 1.5 AF | 1.5 | Red | 1.9 | 22.0 | 12.2 | 22-16 | 0.5-1.5 | 1,000 |
| PIN 2.5 AF | 2.5 | Blue | 1.9 | 22.0 | 12.5 | 16-14 | 1.5-2.5 | 1,000 |
| PIN 6 AF | 6 | Yellow | 2.7 | 27.5 | 14.3 | 12-10 | 4-6 | 500 |

FLAT BLADE INSULATED TERMINAL

หางปลาหัวเสียบก้านไม้จืด (แบบแบนหัวฉนวน)
(PIN TYPE)

Material: Copper
Surface: Tin plated
Insulation: PVC

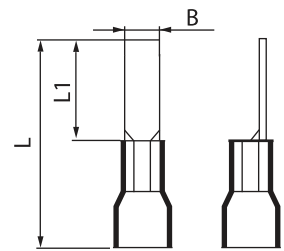


| Item No. | TIS Wire Size mm ² | Color | DIMENSIONS (MM.) | | | AWG | DIN mm ² | Q'TY in box |
|------------|-------------------------------|--------|------------------|------|------|-------|---------------------|-------------|
| | | | B | L | L1 | | | |
| PIN 110 FB | 1.5 | Red | 2.3 | 20.0 | 10.0 | 22-16 | 0.5-1.5 | 1,000 |
| PIN 210 FB | 2.5 | Blue | 2.3 | 20.5 | 10.5 | 16-14 | 1.5-2.5 | 1,000 |
| PIN 510 FB | 6 | Yellow | 2.8 | 23.5 | 10.5 | 12-10 | 4-6 | 500 |

FLAT BLADE INSULATED TERMINAL

หางปลาหัวเสียบก้านไม้จืด
(แบบแบนยาวหัวฉนวน)
(PIN TYPE)

Material: Copper
Surface: Tin plated
Insulation: PVC



| Item No. | TIS Wire Size mm ² | Color | DIMENSIONS (MM.) | | | AWG | DIN mm ² | Q'TY in box |
|------------|-------------------------------|--------|------------------|------|------|-------|---------------------|-------------|
| | | | B | L | L1 | | | |
| PIN 118 FB | 1.5 | Red | 2.2 | 28.5 | 18.5 | 22-16 | 0.5-1.5 | 1,000 |
| PIN 218 FB | 2.5 | Blue | 2.2 | 28.5 | 18.5 | 16-14 | 1.5-2.5 | 1,000 |
| PIN 518 FB | 6 | Yellow | 4.5 | 31.3 | 18.2 | 12-10 | 4-6 | 500 |



CLOSED-END CONNECTORS

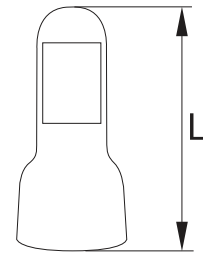
หัวต่อสายหุ้มฉนวนรูปหมวก (แบบจางพุ่น)

(N TYPE)

Material: Copper

Surface: Tin plated

Insulation: Polyamide



| Item No. | TIS Wire Size mm ² | Color | DIMENSIONS (MM.) | | AWG | DIN mm ² | Q'TY in box |
|----------|-------------------------------|-------------|------------------|--|-------|---------------------|-------------|
| | | | L | | | | |
| N 1.5 | 0.5-1.5 | Milky White | 18.1 | | 22-16 | 0.5-1.5 | 1,000 |
| N 2.5 | 1.5-2.5 | | 20.1 | | 16-14 | 1.5-2.5 | 500 |
| N 6 | 4-6 | | 24.8 | | 12-10 | 4-6 | 250 |
| N 10 | 10 | | 27.5 | | 8 | 10 | 250 |

WIRE-NUT CONNECTORS

ไวร์นัท สปริงเหล็ย หุ้มฉนวน

(P TYPE)

Material: Brass

Surface: Square spring steel wire

Insulation: P.P.



ขดลวดสปริงภายในเป็นส่วนเหล็ย
ช่วยล็อกและรัดสายให้แน่นขึ้น
Inner assembled with square
spring steel wires

| Item No. | TIS Wire Size mm ² | Color | AWG | DIN mm ² | Q'TY in box |
|----------|-------------------------------|--------|-------|---------------------|-------------|
| P 1-11 | 0.5-1.5 | Gray | 22-16 | 0.5-1.5 | 1,000 |
| P 2-22 | 0.5-2.5 | Blue | 22-14 | 0.5-2.5 | 500 |
| P 3-33 | 0.5-2.5 | Orange | 22-14 | 0.5-2.5 | 400 |
| P 4-44 | 1-4 | Yellow | 18-12 | 1-4 | 250 |
| P 6-66 | 1-6 | Red | 18-10 | 1-6 | 200 |

QUICK SPLICES

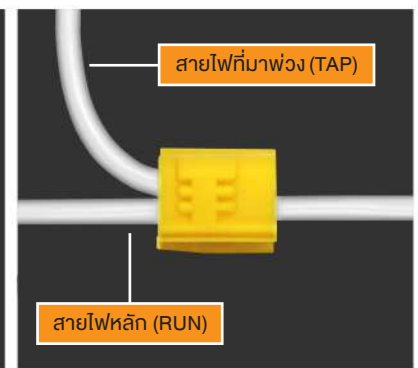
ตลับหนีบสาย หุ้มฉนวน

(SS TYPE)

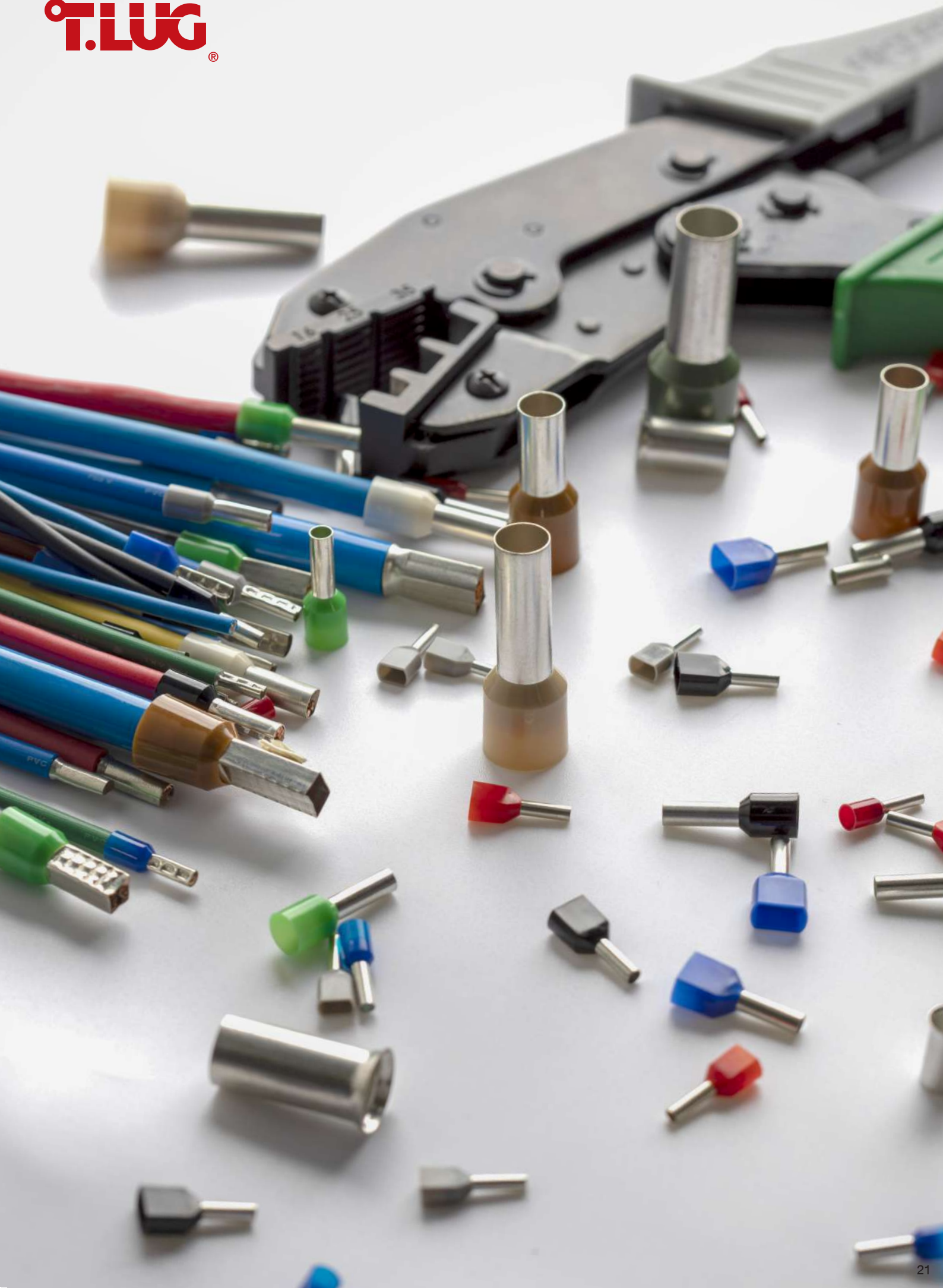
Material: Brass

Surface: Tin plated

Insulation: P.P.



| Item No. | TIS Wire Size mm ² | Color | AWG | DIN mm ² | Q'TY in box |
|----------|-------------------------------|--------|-------|---------------------|-------------|
| SS 1.5 | 1.5 | Red | 22-16 | 0.5-1.5 | 200 |
| SS 2.5 | 2.5 | Blue | 16-14 | 1.5-2.5 | 200 |
| SS 4 | 6 | Yellow | 12-10 | 4-6 | 100 |



CORD-END SLEEVE

ข้อต่อท้ายปลายสายหุ้มฉนวน (แบบเดี่ยว)

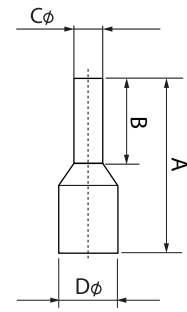
(CE TYPE)

Material: Copper

Surface: Tin plated

Insulation: Polyamide

(Nylon 6-6)



| Item No. | TIS Wire Size mm ² | Color | | | DIMENSIONS (MM.) | | | | AWG | DIN mm ² | Q'TY in box |
|------------|-------------------------------|------------|------------|---------|------------------|------|------|------|-----|---------------------|-------------|
| | | (T) French | (W) German | (D) Din | A | B | CØ | DØ | | | |
| CE 0.5-6 | 0.5 | White | Orange | White | 12.0 | 6.0 | 1.3 | 3.2 | 22 | 0.5 | 2,000 |
| CE 0.5-8 | | | | | 14.0 | 8.0 | | | | | |
| CE 0.5-10 | | | | | 16.0 | 10.0 | | | | | |
| CE 0.75-6 | 0.75 | M.Blue | White | Gray | 12.0 | 6.0 | 1.5 | 3.4 | 20 | 0.75 | 2,000 |
| CE 0.75-8 | | | | | 14.5 | 8.0 | | | | | |
| CE 0.75-10 | | | | | 16.0 | 10.0 | | | | | |
| CE 0.75-12 | | | | | 18.0 | 12.0 | | | | | |
| CE 1.0-6 | 1 | Red | Yellow | Red | 12.0 | 6.0 | 1.7 | 3.6 | 18 | 1 | 2,000 |
| CE 1.0-8 | | | | | 14.8 | 8.0 | | | | | |
| CE 1.0-10 | | | | | 16.0 | 10.0 | | | | | |
| CE 1.0-12 | | | | | 18.0 | 12.0 | | | | | |
| CE 1.5-8 | 1.5 | Black | d.Red | Black | 15.0 | 8.0 | 2.0 | 4.1 | 16 | 1.5 | 2,000 |
| CE 1.5-10 | | | | | 17.0 | 10.0 | | | | | |
| CE 1.5-12 | | | | | 18.0 | 12.0 | | | | | |
| CE 2.5-8 | 2.5 | Gray | Blue | Blue | 15.5 | 5.0 | 2.5 | 4.8 | 14 | 2.5 | 2,000 |
| CE 2.5-10 | | | | | 17.2 | 10.0 | | | | | |
| CE 2.5-12 | | | | | 18.0 | 12.0 | | | | | |
| CE 4.0-10 | 4 | Orange | Gray | Gray | 18.0 | 10.0 | 3.2 | 5.5 | 12 | 4 | 2,000 |
| CE 4.0-12 | | | | | 20.0 | 12.0 | | | | | |
| CE 4.0-18 | | | | | 26.0 | 18.0 | | | | | |
| CE 6.0-12 | 6 | Green | Black | Yellow | 21.2 | 12.0 | 3.9 | 7 | 10 | 6 | 1,000 |
| CE 6.0-18 | | | | | 26.0 | 18.0 | | | | | |
| CE 10-12 | 10 | Brown | Ivory | Red | 23.3 | 12.0 | 4.9 | 8.4 | 8 | 10 | 500 |
| CE 10-18 | | | | | 28.0 | 18.0 | | | | | |
| CE 16-12 | 16 | Ivory | Green | Blue | 23.0 | 12.0 | 6.2 | 9.5 | 6 | 16 | 500 |
| CE 16-18 | | | | | 28.0 | 18.0 | | | | | |
| CE 25-16 | 25 | Black | Brown | Yellow | 30.5 | 15.5 | 7.7 | 12 | 4 | 25 | 200 |
| CE 25-22 | | | | | 35.0 | 22.0 | | | | | |
| CE 35-16 | 35 | Red | Beige | Red | 31.0 | 16.0 | 8.7 | 13.5 | 2 | 35 | 200 |
| CE 35-25 | | | | | 39.8 | 25.0 | | | | | 100 |
| CE 50-20 | 50 | Blue | Olive | Blue | 36.0 | 20.0 | 10.9 | 16 | 1/0 | 50 | 100 |
| CE 50-25 | | | | | 40.0 | 25.0 | | | | | |

CORD-END TWIN SLEEVE

ข้อต่อท้ายปลายสายหุ้มฉนวน (แบบคู่)

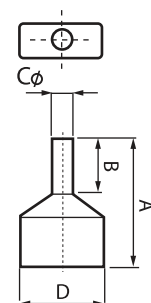
(CE TYPE)

Material: Copper

Surface: Tin plated

Insulation: Polyamide

(Nylon 6-6)



| Item No. | TIS Wire Size mm ² | Color | DIMENSIONS (MM.) | | | | AWG | DIN mm ² | Q'TY in box |
|-------------|-------------------------------|-------|------------------|------|-----|-----|-----|---------------------|-------------|
| | | | A | B | CØ | D | | | |
| CE 0.75-8x2 | 0.75 | Gray | 15.3 | 8.0 | 2.1 | 5.5 | 20 | 0.75 | 1,000 |
| CE 1.0-8x2 | 1 | Red | 15.8 | 8.0 | 2.0 | 6.2 | 18 | 1 | 1,000 |
| CE 1.5-8x2 | 1.5 | Black | 16.8 | 8.0 | 2.6 | 7.5 | 16 | 1.5 | 1,000 |
| CE 2.5-10x2 | 2.5 | Blue | 19.5 | 10.0 | 2.9 | 8.7 | 14 | 2.5 | 1,000 |

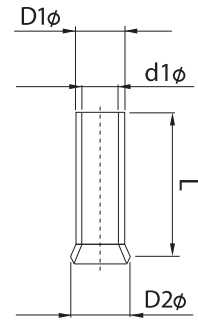
NON-INSULATED CORD-END SLEEVE

ข้อต่อท้ายปลายสาย (แบบเดี่ยวเปลือย)

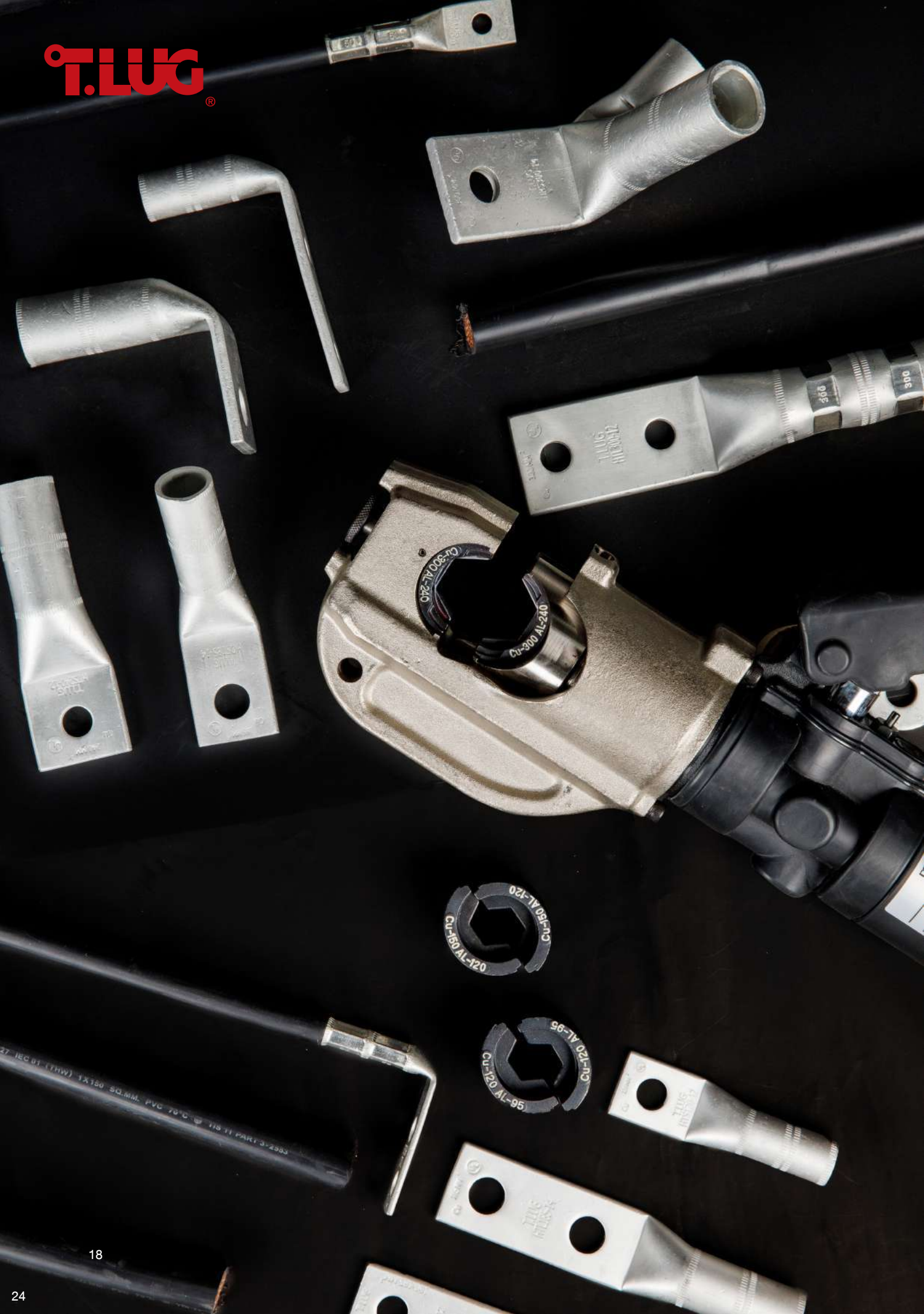
(CN TYPE)

Material: Copper

Surface: Tin plated



| Item No. | TIS Wire Size mm ² | (DIMENSIONS (MM.)) | | | | AWG | DIN mm ² | Q'TY in box |
|------------|-------------------------------|--------------------|------|------|------|-------------|---------------------|-------------|
| | | L | d1Ø | D Ø | D2Ø | | | |
| CN 0.5-6 | 0.5 | 6.0 | 1 | 1.3 | 2.1 | 22 | 0.5 | 2,000 |
| CN 0.5-8 | | 8.0 | | | | | | |
| CN 0.5-10 | | 10.0 | | | | | | |
| CN 0.75-6 | 0.75 | 6.0 | 1.2 | 1.5 | 2.3 | 20 | 0.75 | 2,000 |
| CN 0.75-8 | | 8.0 | | | | | | |
| CN 0.75-10 | | 10.0 | | | | | | |
| CN 0.75-12 | | 12.0 | | | | | | |
| CN 1.0-6 | 1 | 6.0 | 1.4 | 1.7 | 2.5 | 18 | 1 | 2,000 |
| CN 1.0-8 | | 8.0 | | | | | | |
| CN 1.0-10 | | 10.0 | | | | | | |
| CN 1.0-12 | | 12.0 | | | | | | |
| CN 1.5-8 | 1.5 | 8.0 | 1.7 | 2.0 | 2.8 | 16 | 1.5 | 2,000 |
| CN 1.5-10 | | 10.0 | | | | | | |
| CN 1.5-12 | | 12.0 | | | | | | |
| CN 2.5-8 | 2.5 | 8.0 | 2.2 | 2.5 | 3.4 | 14 | 2.5 | 2,000 |
| CN 2.5-10 | | 10.0 | | | | | | |
| CN 2.5-12 | | 12.0 | | | | | | |
| CN 4.0-10 | 4 | 10.0 | 2.8 | 3.2 | 4.0 | 12 | 4 | 2,000 |
| CN 4.0-12 | | 12.0 | | | | | | |
| CN 4.0-18 | | 18.0 | | | | | | |
| CN 6.0-12 | 6 | 12.0 | 3.5 | 3.9 | 4.7 | 10 | 6 | 2,000 |
| CN 6.0-18 | | 18.0 | | | | | | |
| CN 10-12 | 10 | 12.0 | 4.5 | 4.9 | 5.8 | 8 | 10 | 1,000 |
| CN 10-18 | | 18.0 | | | | | | |
| CN 16-12 | 16 | 12.0 | 5.8 | 6.2 | 7.5 | 6 | 16 | 1,000 |
| CN 16-18 | | 18.0 | | | | | | |
| CN 25-16 | 25 | 16.0 | 7.3 | 7.7 | 9.5 | 4 | 25 | 500 |
| CN 25-22 | | 22.0 | | | | | | |
| CN 35-16 | 35 | 16.0 | 8.3 | 8.7 | 11.0 | 2 | 35 | 400 |
| CN 35-25 | | 25.0 | | | | | | |
| CN 50-20 | 50 | 20.0 | 10.3 | 10.9 | 13.0 | 1/0 | 50 | 200 |
| CN 50-25 | | 24.7 | | | | | | |
| CN 70-22 | 70 | 22.0 | 13.5 | 14.3 | 15.3 | 2/0 | 70 | 100 |
| CN 70-25 | | 25.0 | | | | | | |
| CN 95-25 | 95 | 25.0 | 14.7 | 15.5 | 16.6 | 3/0 | 95 | 100 |
| CN 95-32 | | 32.0 | | | | | | |
| CN 120-30 | 120 | 30.0 | 16.7 | 17.6 | 18.6 | 4/0 | 120 | 80 |
| CN 120-32 | | 32.0 | | | | | | |
| CN 120-34 | | 34.0 | | | | | | |
| CN 150-32 | 150 | 32.0 | 19.5 | 20.5 | 21.5 | 250-300 MCM | 150 | 25 |
| CN 150-38 | | 38.0 | | | | | | |



HIGH VOLTAGE (MV.,HV.) ELECTRICAL TERMINALS SPLICE LONG BARREL

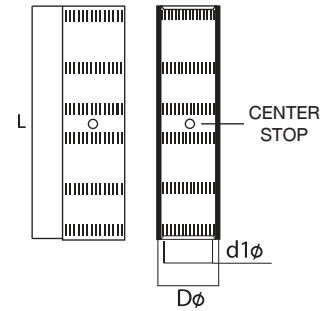
ข้อต่อสายแรงสูงแบบย้าเปลือย

Permitted crimp in larger size to assure a strong full tension and high conductive suitable to connect cable size from 10-500 SQ.MM. 12-35 KV.

(HTSL TYPE)

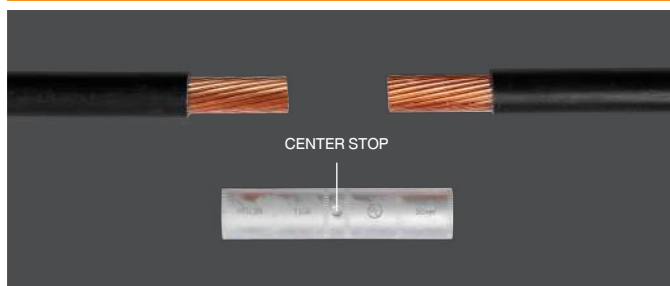
Material: ETP-Copper tube Cu 99% UP

Surface: Tin plated



| Item No. | TIS Wire Size mm ² | DIMENSIONS (MM.) | | | Q'TY in box |
|----------|-------------------------------|------------------|------|-----|-------------|
| | | d1Ø | DØ | L | |
| HTSL 10 | 10 | 4.5 | 6.2 | 48 | 100 |
| HTSL 16 | 16 | 5.4 | 7.1 | 55 | 100 |
| HTSL 25 | 25 | 6.8 | 8.8 | 62 | 100 |
| HTSL 35 | 35 | 8.2 | 10.6 | 70 | 50 |
| HTSL 50 | 50 | 9.5 | 12.4 | 75 | 50 |
| HTSL 70 | 70 | 11.2 | 14.7 | 75 | 40 |
| HTSL 95 | 95 | 13.5 | 17.4 | 80 | 40 |
| HTSL 120 | 120 | 15.0 | 19.4 | 85 | 20 |
| HTSL 150 | *,** 150 | 16.5 | 21.2 | 105 | 20 |
| HTSL 185 | 185 | 18.5 | 23.5 | 105 | 10 |
| HTSL 240 | 240 | 21.5 | 27.0 | 118 | 10 |
| HTSL 300 | 300 | 23.5 | 30.0 | 140 | 8 |
| HTSL 400 | 400 | 27.0 | 35.0 | 140 | 5 |
| HTSL 500 | 500 | 30.0 | 39.0 | 155 | 5 |

ขั้นตอนการย้าสลิปต่อสาย (ให้ย้าจากในสุดไปปลายสุดแต่ละข้าง)



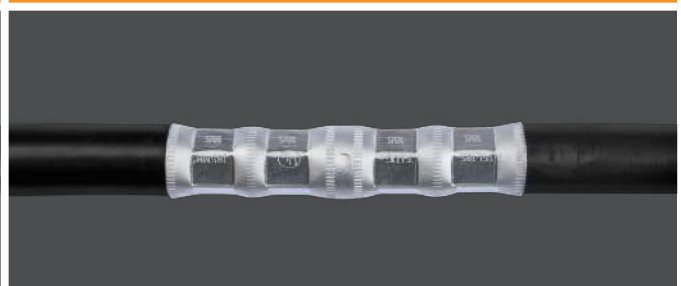
1.เตรียมหางปลาและสายไฟ



2.ย้าสายจากด้านใน



3.ย้าสายที่ปลายสลิป



4.ย้าอีกฝั่งในลักษณะเดียวกัน

หมายเหตุ (Remark): * สามารถนำไปใช้ในงานติดตั้งสายไฟชนิดตีเกลียวธรรมดาและชนิดตีเกลียวอัดแน่น (Use for stranded and compact)

** สามารถนำไปใช้กับสายไฟขนาด 185 มม² ชนิดตีเกลียวอัดแน่น (Use for compact 185mm²)

HIGH VOLTAGE (MV.,HV.) ELECTRICAL TERMINALS

SHORT BARREL ONE HOLE

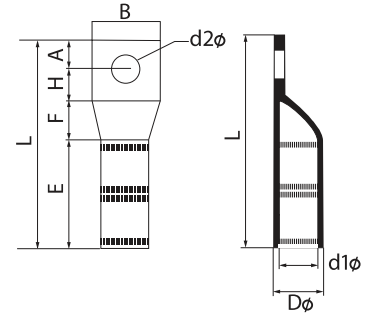
หางปลาแรงสูงชนิดรูเดี่ยว

Has provide mechanical strength for heavyduty applications. Suitable for use with cable size from 10-500 SQ.mm.12-35 KV.

(HTS TYPE)

Material: ETP-Copper tube Cu 99% UP

Surface: Tin plated



| Item No. | TIS Wire Size mm ² | DIMENSIONS (MM.) | | | | | | | | | Q'TY in box |
|------------|-------------------------------|------------------|------|------|------|------|------|------|------|-------|-------------|
| | | d2φ | d1φ | Dφ | A | B | E | F | H | L | |
| HTS 10-6 | 10 | 6.4 | 4.5 | 6.2 | 9.5 | 12.0 | 21.5 | 7.4 | 11.5 | 49.9 | 100 |
| HTS 10-8 | | 8.4 | | | | | | | | | |
| HTS 16-6 | 16 | 6.4 | 5.4 | 7.1 | 9.5 | 12.0 | 25.0 | 7.4 | 11.5 | 53.4 | 100 |
| HTS 16-8 | | 8.4 | | | | | | | | | |
| HTS 25-6 | 25 | 6.4 | 6.8 | 8.8 | 11.5 | 15.0 | 28.5 | 7.4 | 13.5 | 60.9 | 100 |
| HTS 25-8 | | 8.4 | | | | | | | | | |
| HTS 25-10 | | 10.5 | | | | | | | | | |
| HTS 35-6 | 35 | 6.4 | 8.2 | 10.6 | 11.5 | 17.0 | 32.0 | 8.0 | 13.5 | 65.0 | 50 |
| HTS 35-8 | | 8.4 | | | | | | | | | |
| HTS 35-10 | | 10.5 | | | | | | | | | |
| HTS 50-8 | 50 | 8.4 | 9.5 | 12.4 | 13.5 | 19.0 | 35.0 | 10.9 | 15.5 | 74.9 | 40 |
| HTS 50-10 | | 10.5 | | | | | | | | | |
| HTS 50-12 | | 13.0 | | | | | | | | | |
| HTS 70-8 | 70 | 8.4 | 11.2 | 14.7 | 13.5 | 21.0 | 35.0 | 10.9 | 17.5 | 76.9 | 40 |
| HTS 70-10 | | 10.5 | | | | | | | | | |
| HTS 70-12 | | 13.0 | | | | | | | | | |
| HTS 95-8 | 95 | 8.4 | 13.5 | 17.4 | 13.5 | 25.5 | 38.0 | 15.8 | 17.5 | 84.8 | 20 |
| HTS 95-10 | | 10.5 | | | | | | | | | |
| HTS 95-12 | | 13.0 | | | | | | | | | |
| HTS 120-10 | 120 | 10.5 | 15.0 | 19.4 | 14.5 | 28.0 | 40.0 | 18.8 | 18.5 | 91.8 | 20 |
| HTS 120-12 | | 13.0 | | | | | | | | | |
| HTS 120-14 | | 15.0 | | | | | | | | | |
| HTS 150-12 | *,** | 13.0 | 16.5 | 21.2 | 16.5 | 30.5 | 50.0 | 19.8 | 20.5 | 106.8 | 20 |
| HTS 150-14 | 150 | 15.0 | | | | | | | | | |
| HTS 150-16 | | 17.0 | | | | | | | | | |
| HTS 185-12 | 185 | 13.0 | 18.5 | 23.5 | 16.5 | 34.0 | 50.0 | 19.8 | 20.5 | 106.8 | 10 |
| HTS 185-14 | | 15.0 | | | | | | | | | |
| HTS 185-16 | | 17.0 | | | | | | | | | |
| HTS 240-12 | 240 | 13.0 | 21.5 | 27.0 | 16.5 | 39.5 | 56.0 | 24.8 | 20.5 | 117.8 | 10 |
| HTS 240-14 | | 15.0 | | | | | | | | | |
| HTS 240-16 | | 17.0 | | | | | | | | | |
| HTS 300-12 | 300 | 13.0 | 23.5 | 30.0 | 20.0 | 43.5 | 67.0 | 26.8 | 24.0 | 137.8 | 10 |
| HTS 300-14 | | 15.0 | | | | | | | | | |
| HTS 300-16 | | 17.0 | | | | | | | | | |
| HTS 400-12 | 400 | 13.0 | 27.0 | 35.0 | 23.0 | 50.8 | 67.0 | 26.8 | 27.0 | 143.8 | 5 |
| HTS 400-14 | | 15.0 | | | | | | | | | |
| HTS 400-16 | | 17.0 | | | | | | | | | |
| HTS 500-12 | 500 | 13.0 | 30.0 | 39.0 | 23.0 | 56.0 | 75.0 | 33.8 | 27.0 | 158.8 | 5 |
| HTS 500-14 | | 15.0 | | | | | | | | | |
| HTS 500-16 | | 17.0 | | | | | | | | | |

หมายเหตุ (Remark): * สามารถนำไปใช้ในงานติดตั้งสายไฟชนิดตีเกลียวธรรมดาและชนิดตีเกลียวอัดแน่น (Use for stranded and compact)

** สามารถนำไปใช้กับสายไฟขนาด 185 มม² ชนิดตีเกลียวอัดแน่น (Use for compact 185mm²)

HIGH VOLTAGE (MV.,HV.) ELECTRICAL TERMINALS

LONG BARREL TWO HOLES

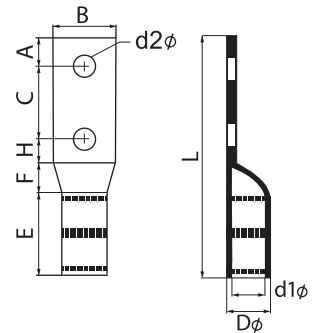
หางปลาแรงสูงชนิดรูคู่

Permitted crimp in larger size for additional assurance on heavy duty load suitable for terminating cable size from 10-500 SQ.MM. 12-35 KV.

(HTL TYPE)

Material: ETP-Copper tube Cu 99% UP

Surface: Tin plated



| Item No. | TIS Wire Size mm ² | DIMENSIONS (MM.) | | | | | | | | | | Q'TY in box |
|------------|-------------------------------|------------------|------|------|------|------|------|-------|------|------|-------|-------------|
| | | d2 | d1Ø | DØ | A | B | C* | E | F | H | L | |
| HTL 10-6 | 10 | 6.4 | 4.5 | 6.2 | 9.5 | 12.0 | 15.8 | 21.5 | 7.4 | 11.5 | 65.7 | 100 |
| HTL 10-8 | | 8.4 | | | | | | | | | | |
| HTL 16-6 | 16 | 6.4 | 5.4 | 7.1 | 9.5 | 12.0 | 15.8 | 25.0 | 7.4 | 11.5 | 69.2 | 100 |
| HTL 16-8 | | 8.4 | | | | | | | | | | |
| HTL 25-6 | 25 | 6.4 | 6.8 | 8.8 | 11.5 | 15.0 | 15.8 | 28.5 | 7.4 | 13.5 | 76.7 | 100 |
| HTL 25-8 | | 8.4 | | | | | | | | | | |
| HTL 25-10 | | 10.5 | | | | | | | | | | |
| HTL 35-6 | 35 | 6.4 | 8.2 | 10.6 | 11.5 | 17.0 | 19.0 | 32.0 | 8.0 | 13.5 | 84.0 | 50 |
| HTL 35-8 | | 8.4 | | | | | | | | | | |
| HTL 35-10 | | 10.5 | | | | | | | | | | |
| HTL 50-8 | 50 | 8.4 | 9.5 | 12.4 | 11.5 | 19.0 | 22.7 | 35.0 | 10.9 | 13.5 | 93.6 | 40 |
| HTL 50-10 | | 10.5 | | | | | | | | | | |
| HTL 50-12 | | 13.0 | | | 13.5 | 44.4 | 15.5 | 119.3 | | | | |
| HTL 70-8 | 70 | 8.4 | 11.2 | 14.7 | 11.5 | 21.0 | 22.7 | 35.0 | 10.9 | 13.5 | 93.6 | 40 |
| HTL 70-10 | | 10.5 | | | | | | | | | | |
| HTL 70-12 | | 13.0 | | | 13.5 | 44.4 | 17.5 | 121.3 | | | | |
| HTL 95-8 | 95 | 8.4 | 13.5 | 17.4 | 13.5 | 25.5 | 44.4 | 38.0 | 15.8 | 17.5 | 129.2 | 20 |
| HTL 95-10 | | 10.5 | | | | | | | | | | |
| HTL 95-12 | | 13.0 | | | | | | | | | | |
| HTL 120-10 | 120 | 10.5 | 15.0 | 19.4 | 14.5 | 28.0 | 44.4 | 40.0 | 18.8 | 18.5 | 136.2 | 20 |
| HTL 120-12 | | 13.0 | | | | | | | | | | |
| HTL 120-14 | | 15.0 | | | | | | | | | | |
| HTL 150-12 | *,** | 13.0 | 16.5 | 21.2 | 16.5 | 30.5 | 44.4 | 50.0 | 19.8 | 20.5 | 151.2 | 20 |
| HTL 150-14 | 150 | 15.0 | | | | | | | | | | |
| HTL 150-16 | 17.0 | | | | | | | | | | | |
| HTL 185-12 | 185 | 13.0 | 18.5 | 23.5 | 16.5 | 34.0 | 44.4 | 50.0 | 19.8 | 20.5 | 151.2 | 10 |
| HTL 185-14 | | 15.0 | | | | | | | | | | |
| HTL 185-16 | | 17.0 | | | | | | | | | | |
| HTL 240-12 | 240 | 13.0 | 21.5 | 27.0 | 16.5 | 39.5 | 44.4 | 56.0 | 24.8 | 20.5 | 162.2 | 10 |
| HTL 240-14 | | 15.0 | | | | | | | | | | |
| HTL 240-16 | | 17.0 | | | | | | | | | | |
| HTL 300-12 | 300 | 13.0 | 23.5 | 30.0 | 16.5 | 43.5 | 44.4 | 67.0 | 26.8 | 20.5 | 175.2 | 10 |
| HTL 300-14 | | 15.0 | | | | | | | | | | |
| HTL 300-16 | | 17.0 | | | | | | | | | | |
| HTL 400-12 | 400 | 13.0 | 27.0 | 35.0 | 16.5 | 50.8 | 44.4 | 67.0 | 26.8 | 20.5 | 175.2 | 5 |
| HTL 400-14 | | 15.0 | | | | | | | | | | |
| HTL 400-16 | | 17.0 | | | | | | | | | | |
| HTL 500-12 | 500 | 13.0 | 30.0 | 39.0 | 16.5 | 56.0 | 44.4 | 75.0 | 33.8 | 20.5 | 190.2 | 5 |
| HTL 500-14 | | 15.0 | | | | | | | | | | |
| HTL 500-16 | | 17.0 | | | | | | | | | | |

หมายเหตุ (Remark): * สามารถนำไปใช้ในงานติดตั้งสายไฟชนิดตีเกลียวธรรมดาและชนิดตีเกลียวอัดแน่น (Use for stranded and compact)

** สามารถนำไปใช้กับสายไฟขนาด 185 มม² ชนิดตีเกลียวอัดแน่น (Use for compact 185mm²)

C* ANSI HOLE

HIGH VOLTAGE ANGLE 90° ELECTRICAL TERMINALS

SHORT BARREL ONE HOLE

หางปลาแรงสูงชนิดรูเดี่ยวมุม 90°

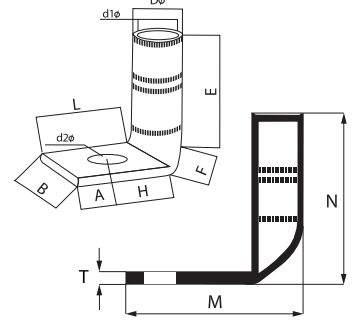
Suitable for use with cable size from 10-500 SQ.MM. In right angle position

(HRS TYPE)

Material: ETP-Copper tube

Cu 99% UP

Surface: Tin plated



| ITEM NO. | TIS Wire Size mm ² | DIMENSIONS (MM.) | | | | | | | | | | | | Q'TY in box |
|------------|-------------------------------|------------------|------|------|------|------|------|------|------|------|-------|-------|-----|-------------|
| | | d2Ø | d1Ø | DØ | A | B | E | F | H | L | M | N | T | |
| HRS 10-6 | 10 | 6.4 | 4.5 | 6.2 | 9.5 | 12.0 | 21.5 | 7.4 | 16.5 | 26.0 | 32.2 | 29.5 | 1.1 | 100 |
| HRS 10-8 | | 8.4 | | | | | | | | | | | | |
| HRS 16-6 | 16 | 6.4 | 5.4 | 7.1 | 9.5 | 12.0 | 25.0 | 7.4 | 16.5 | 26.0 | 33.1 | 33.0 | 1.2 | 100 |
| HRS 16-8 | | 8.4 | | | | | | | | | | | | |
| HRS 25-6 | 25 | 6.4 | 6.8 | 8.8 | 11.5 | 15.0 | 28.5 | 7.4 | 18.5 | 30.0 | 38.8 | 36.7 | 1.6 | 100 |
| HRS 25-8 | | 8.4 | | | | | | | | | | | | |
| HRS 25-10 | | 10.5 | | | | | | | | | | | | |
| HRS 35-6 | 35 | 6.4 | 8.2 | 10.6 | 11.5 | 17.0 | 32.0 | 8.0 | 21.5 | 33.0 | 43.6 | 41.0 | 2.0 | 50 |
| HRS 35-8 | | 8.4 | | | | | | | | | | | | |
| HRS 35-10 | | 10.5 | | | | | | | | | | | | |
| HRS 50-8 | 50 | 8.4 | 9.5 | 12.4 | 13.5 | 19.0 | 35.0 | 10.9 | 23.5 | 37.0 | 49.4 | 47.2 | 2.5 | 40 |
| HRS 50-10 | | 10.5 | | | | | | | | | | | | |
| HRS 50-12 | | 13.0 | | | | | | | | | | | | |
| HRS 70-8 | 70 | 8.4 | 11.2 | 14.7 | 13.5 | 21.0 | 35.0 | 10.9 | 27.5 | 41.0 | 55.7 | 47.7 | 3.5 | 20 |
| HRS 70-10 | | 10.5 | | | | | | | | | | | | |
| HRS 70-12 | | 13.0 | | | | | | | | | | | | |
| HRS 95-8 | 95 | 8.4 | 13.5 | 17.4 | 13.5 | 25.5 | 38.0 | 15.8 | 27.5 | 41.0 | 58.4 | 55.6 | 3.6 | 10 |
| HRS 95-10 | | 10.5 | | | | | | | | | | | | |
| HRS 95-12 | | 13.0 | | | | | | | | | | | | |
| HRS 120-10 | 120 | 10.5 | 15.0 | 19.4 | 14.5 | 28.0 | 40.0 | 18.8 | 28.5 | 43.0 | 62.4 | 61.0 | 4.3 | 10 |
| HRS 120-12 | | 13.0 | | | | | | | | | | | | |
| HRS 120-14 | | 15.0 | | | | | | | | | | | | |
| HRS 150-12 | 150 | 13.0 | 16.5 | 21.2 | 16.5 | 30.5 | 50.0 | 19.8 | 30.5 | 47.0 | 68.2 | 72.1 | 4.5 | 10 |
| HRS 150-14 | | 15.0 | | | | | | | | | | | | |
| HRS 150-16 | | 17.0 | | | | | | | | | | | | |
| HRS 185-12 | 185 | 13.0 | 18.5 | 23.5 | 16.5 | 34.0 | 50.0 | 19.8 | 30.5 | 47.0 | 70.5 | 72.2 | 4.8 | 10 |
| HRS 185-14 | | 15.0 | | | | | | | | | | | | |
| HRS 185-16 | | 17.0 | | | | | | | | | | | | |
| HRS 240-12 | 240 | 13.0 | 21.5 | 27.0 | 16.5 | 39.5 | 56.0 | 24.8 | 35.5 | 52.0 | 79.0 | 83.6 | 5.5 | 5 |
| HRS 240-14 | | 15.0 | | | | | | | | | | | | |
| HRS 240-16 | | 17.0 | | | | | | | | | | | | |
| HRS 300-12 | 300 | 13.0 | 23.5 | 30.0 | 20.0 | 43.5 | 67.0 | 26.8 | 44.0 | 64.0 | 94.0 | 97.0 | 6.3 | 5 |
| HRS 300-14 | | 15.0 | | | | | | | | | | | | |
| HRS 300-16 | | 17.0 | | | | | | | | | | | | |
| HRS 400-12 | 400 | 13.0 | 27.0 | 35.0 | 23.0 | 50.8 | 67.0 | 26.8 | 47.0 | 70.0 | 105.0 | 97.8 | 7.9 | 2 |
| HRS 400-14 | | 15.0 | | | | | | | | | | | | |
| HRS 400-16 | | 17.0 | | | | | | | | | | | | |
| HRS 500-12 | 500 | 13.0 | 32.0 | 39.0 | 23.0 | 56.0 | 75.0 | 33.8 | 47.0 | 70.0 | 109.0 | 113.3 | 8.9 | 1 |
| HRS 500-14 | | 15.0 | | | | | | | | | | | | |
| HRS 500-16 | | 17.0 | | | | | | | | | | | | |

หมายเหตุ (Remark): * สามารถนำไปใช้ในงานติดตั้งสายไฟชนิดเกลียวธรรมดาและชนิดเกลียวอัดแน่น (Use for stranded and compact)

** สามารถนำไปใช้กับสายไฟขนาด 185 มม² ชนิดเกลียวอัดแน่น (Use for compact 185mm²)

HIGH VOLTAGE ANGLE 90° ELECTRICAL TERMINALS

LONG BARREL TWO HOLES

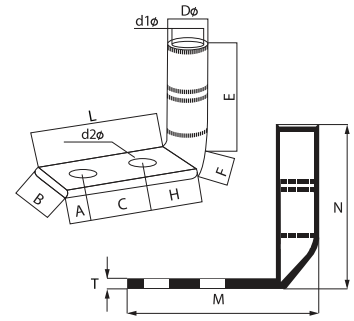
หางปลาแรงสูงชนิดรูปมุม 90°

Suitable for use with cable size from 10-500 SQ.MM. In right angle position

(HRL TYPE)

Material: ETP-Copper tube Cu 99% UP

Surface: Tin plated



| ITEM NO. | TIS Wire Size mm ² | DIMENSIONS (MM.) | | | | | | | | | | | | | Q'TY in box |
|------------|----------------------------------|------------------|------|------|------|------|------|------|------|------|-------|-------|-------|-----|----------------|
| | | d2Ø | d1Ø | DØ | A | B | C* | E | F | H | L | M | N | T | |
| HRL 10-6 | 10 | 6.4 | 4.5 | 6.2 | 9.5 | 12.0 | 15.8 | 21.5 | 7.4 | 16.5 | 41.8 | 48.0 | 29.5 | 1.1 | 100 |
| HRL 10-8 | | 8.4 | | | | | | | | | | | | | |
| HRL 16-6 | 16 | 6.4 | 5.4 | 7.1 | 9.5 | 12.0 | 15.8 | 25.0 | 7.4 | 16.5 | 41.8 | 48.9 | 33.0 | 1.2 | 100 |
| HRL 16-8 | | 8.4 | | | | | | | | | | | | | |
| HRL 25-6 | 25 | 6.4 | 6.8 | 8.8 | 11.5 | 15.0 | 15.8 | 28.5 | 7.4 | 18.5 | 45.8 | 54.6 | 36.7 | 1.6 | 100 |
| HRL 25-8 | | 8.4 | | | | | | | | | | | | | |
| HRL 25-10 | | 10.5 | | | | | | | | | | | | | |
| HRL 35-6 | 35 | 6.4 | 8.2 | 10.6 | 11.5 | 17.0 | 19.0 | 32.0 | 8.0 | 21.5 | 52.0 | 62.6 | 41.0 | 2.0 | 50 |
| HRL 35-8 | | 8.4 | | | | | | | | | | | | | |
| HRL 35-10 | | 10.5 | | | | | | | | | | | | | |
| HRL 50-8 | 50 | 8.4 | 9.5 | 12.4 | 11.5 | 19.0 | 22.7 | 35.0 | 10.9 | 21.5 | 55.7 | 68.1 | 47.2 | 2.5 | 40 |
| HRL 50-10 | | 10.5 | | | | | | | | | | | | | |
| HRL 50-12 | | 13.0 | | | 13.5 | | 44.4 | | | 23.5 | | 81.4 | | | |
| HRL 70-8 | 70 | 8.4 | 11.2 | 14.7 | 11.5 | 21.0 | 22.7 | 35.0 | 10.9 | 23.5 | 57.7 | 72.4 | 47.7 | 3.5 | 20 |
| HRL 70-10 | | 10.5 | | | | | | | | | | | | | |
| HRL 70-12 | | 13.0 | | | 13.5 | | 44.4 | | | 27.5 | | 85.4 | | | |
| HRL 95-8 | 95 | 8.4 | 13.5 | 17.4 | 13.5 | 25.5 | 44.4 | 38.0 | 15.8 | 27.5 | 85.4 | 102.8 | 55.6 | 3.6 | 10 |
| HRL 95-10 | | 10.5 | | | | | | | | | | | | | |
| HRL 95-12 | | 13.0 | | | | | | | | | | | | | |
| HRL 120-10 | 120 | 10.5 | 15.0 | 19.4 | 14.5 | 28.0 | 44.4 | 40.0 | 18.8 | 28.5 | 87.4 | 106.8 | 61.0 | 4.3 | 10 |
| HRL 120-12 | | 13.0 | | | | | | | | | | | | | |
| HRL 120-14 | | 15.0 | | | | | | | | | | | | | |
| HRL 150-12 | *,** | 13.0 | 16.5 | 21.2 | 16.5 | 30.5 | 44.4 | 50.0 | 19.8 | 30.5 | 91.4 | 112.6 | 72.1 | 4.5 | 10 |
| HRL 150-14 | 150 | 15.0 | | | | | | | | | | | | | |
| HRL 150-16 | | 17.0 | | | | | | | | | | | | | |
| HRL 185-12 | 185 | 13.0 | 18.5 | 23.5 | 16.5 | 34.0 | 44.4 | 50.0 | 19.8 | 30.5 | 91.4 | 114.9 | 72.2 | 4.8 | 10 |
| HRL 185-14 | | 15.0 | | | | | | | | | | | | | |
| HRL 185-16 | | 17.0 | | | | | | | | | | | | | |
| HRL 240-12 | 240 | 13.0 | 21.5 | 27.0 | 16.5 | 39.5 | 44.4 | 56.0 | 24.8 | 35.5 | 96.4 | 123.4 | 83.6 | 5.5 | 5 |
| HRL 240-14 | | 15.0 | | | | | | | | | | | | | |
| HRL 240-16 | | 17.0 | | | | | | | | | | | | | |
| HRL 300-12 | 300 | 13.0 | 23.5 | 30.0 | 16.5 | 43.5 | 44.4 | 67.0 | 26.8 | 40.5 | 101.4 | 131.4 | 97.0 | 6.3 | 5 |
| HRL 300-14 | | 15.0 | | | | | | | | | | | | | |
| HRL 300-16 | | 17.0 | | | | | | | | | | | | | |
| HRL 400-12 | 400 | 13.0 | 27.0 | 35.0 | 16.5 | 50.8 | 44.4 | 67.0 | 26.8 | 40.5 | 101.4 | 136.4 | 97.8 | 7.9 | 2 |
| HRL 400-14 | | 15.0 | | | | | | | | | | | | | |
| HRL 400-16 | | 17.0 | | | | | | | | | | | | | |
| HRL 500-12 | 500 | 13.0 | 30.0 | 39.0 | 16.5 | 56.0 | 44.4 | 75.0 | 33.8 | 40.5 | 101.4 | 140.4 | 113.3 | 8.9 | 1 |
| HRL 500-14 | | 15.0 | | | | | | | | | | | | | |
| HRL 500-16 | | 17.0 | | | | | | | | | | | | | |

หมายเหตุ (Remark): * สามารถนำไปใช้ในงานติดตั้งสายไฟชนิดตีเกลียวธรรมดาและชนิดตีเกลียวอัดแน่น (Use for stranded and compact)

** สามารถนำไปใช้กับสายไฟขนาด 185 มม² ชนิดตีเกลียวอัดแน่น (Use for compact 185mm²)

HIGH VOLTAGE OBTUSE ANGLE 135° ELECTRICAL

TERMINALS SHORT BARREL ONE HOLE

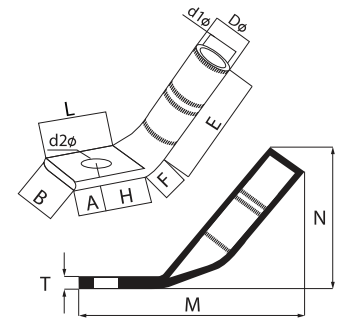
หางปลาแรงสูงชนิดรูเดี่ยวมุม 135°

Suitable for use with cable size from 10-500 SQ.MM. In 135° angle position

(HOS TYPE)

Material: ETP-Copper tube Cu 99% UP

Surface: Tin plated



| ITEM NO. | TIS Wire Size mm ² | DIMENSIONS (MM.) | | | | | | | | | | | | Q'TY in box |
|------------|----------------------------------|------------------|------|------|------|------|------|------|------|------|-------|------|-----|----------------|
| | | d2φ | d1φ | Dφ | A | B | E | F | H | L | M | N | T | |
| HOS 10-6 | 10 | 6.4 | 4.5 | 6.2 | 9.5 | 12.0 | 21.5 | 7.4 | 16.5 | 26.0 | 50.8 | 21.5 | 1.1 | 100 |
| HOS 10-8 | | 8.4 | | | | | | | | | | | | |
| HOS 16-6 | 16 | 6.4 | 5.4 | 7.1 | 9.5 | 12.0 | 25.0 | 7.4 | 16.5 | 26.0 | 53.9 | 24.1 | 1.2 | 100 |
| HOS 16-8 | | 8.4 | | | | | | | | | | | | |
| HOS 25-6 | 25 | 6.4 | 6.8 | 8.8 | 11.5 | 15.0 | 28.5 | 7.4 | 18.5 | 30.0 | 61.6 | 27.0 | 1.6 | 100 |
| HOS 25-8 | | 8.4 | | | | | | | | | | | | |
| HOS 25-10 | | 10.5 | | | | | | | | | | | | |
| HOS 35-6 | 35 | 6.4 | 8.2 | 10.6 | 11.5 | 17.0 | 32.0 | 8.0 | 21.5 | 33.0 | 68.8 | 30.3 | 2.0 | 50 |
| HOS 35-8 | | 8.4 | | | | | | | | | | | | |
| HOS 35-10 | | 10.5 | | | | | | | | | | | | |
| HOS 50-8 | 50 | 8.4 | 9.5 | 12.4 | 13.5 | 19.0 | 35.0 | 10.9 | 23.5 | 37.0 | 78.2 | 35.0 | 2.5 | 40 |
| HOS 50-10 | | 10.5 | | | | | | | | | | | | |
| HOS 50-12 | | 13.0 | | | | | | | | | | | | |
| HOS 70-8 | 70 | 8.4 | 11.2 | 14.7 | 13.5 | 21.0 | 35.0 | 10.9 | 27.5 | 41.0 | 83.8 | 36.0 | 3.5 | 20 |
| HOS 70-10 | | 10.5 | | | | | | | | | | | | |
| HOS 70-12 | | 13.0 | | | | | | | | | | | | |
| HOS 95-8 | 95 | 8.4 | 13.5 | 17.4 | 13.5 | 25.5 | 38.0 | 15.8 | 27.5 | 41.0 | 91.3 | 41.6 | 3.6 | 10 |
| HOS 95-10 | | 10.5 | | | | | | | | | | | | |
| HOS 95-12 | | 13.0 | | | | | | | | | | | | |
| HOS 120-10 | 120 | 10.5 | 15.0 | 19.4 | 14.5 | 28.0 | 40.0 | 18.8 | 28.5 | 43.0 | 98.3 | 45.9 | 4.3 | 10 |
| HOS 120-12 | | 13.0 | | | | | | | | | | | | |
| HOS 120-14 | | 15.0 | | | | | | | | | | | | |
| HOS 150-12 | *,** | 13.0 | 16.5 | 21.2 | 16.5 | 30.5 | 50.0 | 19.8 | 30.5 | 47.0 | 111.3 | 53.8 | 4.5 | 10 |
| HOS 150-14 | 150 | 15.0 | | | | | | | | | | | | |
| HOS 150-16 | 17.0 | | | | | | | | | | | | | |
| HOS 185-12 | 185 | 13.0 | 18.5 | 23.5 | 16.5 | 34.0 | 50.0 | 19.8 | 30.5 | 47.0 | 113.0 | 54.1 | 4.8 | 10 |
| HOS 185-14 | | 15.0 | | | | | | | | | | | | |
| HOS 185-16 | | 17.0 | | | | | | | | | | | | |
| HOS 240-12 | 240 | 13.0 | 21.5 | 27.0 | 16.5 | 39.5 | 56.0 | 24.8 | 35.5 | 52.0 | 127.9 | 62.6 | 5.5 | 5 |
| HOS 240-14 | | 15.0 | | | | | | | | | | | | |
| HOS 240-16 | | 17.0 | | | | | | | | | | | | |
| HOS 300-12 | 300 | 13.0 | 23.5 | 30.0 | 20.0 | 43.5 | 67.0 | 26.8 | 44.0 | 64.0 | 151.5 | 72.6 | 6.3 | 5 |
| HOS 300-14 | | 15.0 | | | | | | | | | | | | |
| HOS 300-16 | | 17.0 | | | | | | | | | | | | |
| HOS 400-12 | 400 | 13.0 | 27.0 | 35.0 | 23.0 | 50.8 | 67.0 | 26.8 | 47.0 | 70.0 | 155.9 | 74.2 | 7.9 | 2 |
| HOS 400-14 | | 15.0 | | | | | | | | | | | | |
| HOS 400-16 | | 17.0 | | | | | | | | | | | | |
| HOS 500-12 | 500 | 13.0 | 30.0 | 39.0 | 23.0 | 56.0 | 75.0 | 33.8 | 47.0 | 70.0 | 169.9 | 85.8 | 8.9 | 1 |
| HOS 500-14 | | 15.0 | | | | | | | | | | | | |
| HOS 500-16 | | 17.0 | | | | | | | | | | | | |

หมายเหตุ (Remark): * สามารถนำไปใช้ในงานติดตั้งสายไฟชนิดตีเกลียวธรรมดาและชนิดตีเกลียวอัดแน่น (Use for stranded and compact)

** สามารถนำไปใช้กับสายไฟขนาด 185 มม² ชนิดตีเกลียวอัดแน่น (Use for compact 185mm²)

HIGH VOLTAGE OBTUSE ANGLE 135° ELECTRICAL TERMINALS LONG BARREL TWO HOLES

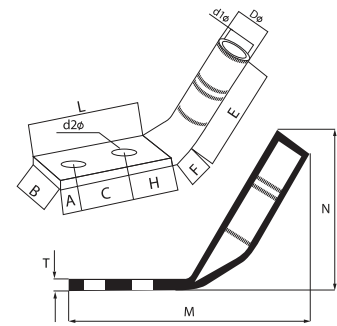
หางปลาแรงสูงชนิดกรงมุม 135°

Suitable for use with cable size from 10-500 SQ.MM. In 135° angle position

(HOL TYPE)

Material: ETP-Copper tube Cu 99% UP

Surface: Tin plated



| ITEM NO. | TIS Wire Size mm ² | DIMENSIONS (MM.) | | | | | | | | | | | | | Q'TY in box |
|------------|-------------------------------|------------------|------|------|------|------|------|------|-------|------|-------|-------|------|-----|-------------|
| | | d2ø | d1ø | Dø | A | B | C* | E | F | H | L | M | N | T | |
| HOL 10-6 | 10 | 6.4 | 4.5 | 6.2 | 9.5 | 12.0 | 15.8 | 21.5 | 7.4 | 16.5 | 41.8 | 66.6 | 21.5 | 1.1 | 100 |
| HOL 10-8 | | 8.4 | | | | | | | | | | | | | |
| HOL 16-6 | 16 | 6.4 | 5.4 | 7.1 | 9.5 | 12.0 | 15.8 | 25.0 | 7.4 | 16.5 | 41.8 | 69.7 | 24.1 | 1.2 | 100 |
| HOL 16-8 | | 8.4 | | | | | | | | | | | | | |
| HOL 25-6 | 25 | 6.4 | 6.8 | 8.8 | 11.5 | 15.0 | 15.8 | 28.5 | 7.4 | 18.5 | 45.8 | 77.4 | 27.0 | 1.6 | 100 |
| HOL 25-8 | | 8.4 | | | | | | | | | | | | | |
| HOL 25-10 | | 10.5 | | | | | | | | | | | | | |
| HOL 35-6 | 35 | 6.4 | 8.2 | 10.6 | 11.5 | 17.0 | 19.0 | 32.0 | 8.0 | 21.5 | 52.0 | 87.8 | 30.3 | 2.0 | 50 |
| HOL 35-8 | | 8.4 | | | | | | | | | | | | | |
| HOL 35-10 | | 10.5 | | | | | | | | | | | | | |
| HOL 50-8 | 50 | 8.4 | 9.5 | 12.4 | 11.5 | 19.0 | 22.7 | 35.0 | 10.9 | 21.5 | 55.7 | 96.9 | 35.0 | 2.5 | 40 |
| HOL 50-10 | | 10.5 | | | | | | | | | | | | | |
| HOL 50-12 | | 13.0 | | | 13.5 | 44.4 | 23.5 | 81.4 | 122.6 | | | | | | |
| HOL 70-8 | 70 | 8.4 | 11.2 | 14.7 | 11.5 | 21.0 | 22.7 | 35.0 | 10.9 | 23.5 | 57.7 | 100.6 | 36.0 | 3.5 | 20 |
| HOL 70-10 | | 10.5 | | | | | | | | | | | | | |
| HOL 70-12 | | 13.0 | | | 13.5 | 44.4 | 27.5 | 85.4 | 128.3 | | | | | | |
| HOL 95-8 | 95 | 8.4 | 13.5 | 17.4 | 13.5 | 25.5 | 44.4 | 38.0 | 15.8 | 27.5 | 85.4 | 135.7 | 41.6 | 3.6 | 10 |
| HOL 95-10 | | 10.5 | | | | | | | | | | | | | |
| HOL 95-12 | | 13.0 | | | | | | | | | | | | | |
| HOL 120-10 | 120 | 10.5 | 15.0 | 19.4 | 14.5 | 28.0 | 44.4 | 40.0 | 18.8 | 28.5 | 87.4 | 142.7 | 45.9 | 4.3 | 10 |
| HOL 120-12 | | 13.0 | | | | | | | | | | | | | |
| HOL 120-14 | | 15.0 | | | | | | | | | | | | | |
| HOL 150-12 | *,** | 13.0 | 16.5 | 21.2 | 16.5 | 30.5 | 44.4 | 50.0 | 19.8 | 30.5 | 91.4 | 155.7 | 53.8 | 4.5 | 10 |
| HOL 150-14 | 150 | 15.0 | | | | | | | | | | | | | |
| HOL 150-16 | 17.0 | | | | | | | | | | | | | | |
| HOL 185-12 | 185 | 13.0 | 18.5 | 23.5 | 16.5 | 34.0 | 44.4 | 50.0 | 19.8 | 30.5 | 91.4 | 157.4 | 54.1 | 4.8 | 10 |
| HOL 185-14 | | 15.0 | | | | | | | | | | | | | |
| HOL 185-16 | | 17.0 | | | | | | | | | | | | | |
| HOL 240-12 | 240 | 13.0 | 21.5 | 27.0 | 16.5 | 39.5 | 44.4 | 56.0 | 24.8 | 35.5 | 96.4 | 172.3 | 62.6 | 5.5 | 5 |
| HOL 240-14 | | 15.0 | | | | | | | | | | | | | |
| HOL 240-16 | | 17.0 | | | | | | | | | | | | | |
| HOL 300-12 | 300 | 13.0 | 23.5 | 30.0 | 16.5 | 43.5 | 44.4 | 67.0 | 26.8 | 40.5 | 101.4 | 188.9 | 72.6 | 6.3 | 5 |
| HOL 300-14 | | 15.0 | | | | | | | | | | | | | |
| HOL 300-16 | | 17.0 | | | | | | | | | | | | | |
| HOL 400-12 | 400 | 13.0 | 27.0 | 35.0 | 16.5 | 50.8 | 44.4 | 67.0 | 26.8 | 40.5 | 101.4 | 193.5 | 74.2 | 7.9 | 2 |
| HOL 400-14 | | 15.0 | | | | | | | | | | | | | |
| HOL 400-16 | | 17.0 | | | | | | | | | | | | | |
| HOL 500-12 | 500 | 13.0 | 30.0 | 39.0 | 16.5 | 56.0 | 44.4 | 75.0 | 33.8 | 40.5 | 101.4 | 205.9 | 85.8 | 8.9 | 1 |
| HOL 500-14 | | 15.0 | | | | | | | | | | | | | |
| HOL 500-16 | | 17.0 | | | | | | | | | | | | | |

หมายเหตุ (Remark): * สามารถนำไปใช้ในงานติดตั้งสายไฟชนิดตีเกลียวธรรมดาและชนิดตีเกลียวอัดแน่น (Use for stranded and compact)

** สามารถนำไปใช้กับสายไฟขนาด 185 มม² ชนิดตีเกลียวอัดแน่น (Use for compact 185mm²)

CERTIFICATE OF COMPLIANCE

Certificate Number 20190429-E304648
Report Reference E304648-20131209
Issue Date 2019-APRIL-29

Issued to: TERMINAL LUGS CO LTD
110/6 Moo 2 Krungnont-Jongthanom Rd
Mahasawat, Bangkruey, Nonthaburi 11130 THAILAND

**This certificate confirms that
representative samples of**

WIRE CONNECTORS AND SOLDERING LUGS
See Addendum Page.

Have been investigated by UL in accordance with the
Standard(s) indicated on this Certificate.

Standard(s) for Safety: UL 486A-486B, Wire Connectors
Additional Information: See the UL Online Certifications Directory at
<https://iq.ulprospector.com> for additional information.

This *Certificate of Compliance* does not provide authorization to apply the UL Mark. Only the UL Follow-Up Services Procedure provides authorization to apply the UL Mark.

Only those products bearing the UL Mark should be considered as being UL Certified and covered under UL's Follow-Up Services.

Look for the UL Certification Mark on the product.



Bruce Mahrenholz, Director North American Certification Program
UL LLC

Any information and documentation involving UL Mark services are provided on behalf of UL LLC (UL) or any authorized licensee of UL. For questions, please contact a local UL Customer Service Representative at <http://ul.com/aboutu/locations/>



CERTIFICATE OF COMPLIANCE

Certificate Number 20190429-E304648
Report Reference E304648-20131209
Issue Date 2019-APRIL-29

This is to certify that representative samples of the product as specified on this certificate were tested according to the current UL requirements.

USL – Non-insulated crimp on terminal connectors, One Hole, Series HTS, HRS, HOS;

Cat. No. H, followed by TS, RS or OS, followed by blank, followed by 10 or 16, followed by -6 or -8.

Cat. No. H, followed by TS, RS or OS, followed by blank, followed by 25 or 35, followed by -6, -8 or -10.

Cat. No. H, followed by TS, RS or OS, followed by blank, followed by 50, 70 or 95, followed by -8, -10 or -12.

Cat. No. H, followed by TS, RS or OS, followed by blank, followed by 120, followed by -10, -12 or -14.

Cat. No. H, followed by TS, RS or OS, followed by blank, followed by 150, followed by -12, -14 or -16, followed by blank, followed by CV185.

Cat. No. H, followed by TS, RS or OS, followed by blank, followed by 185, 240, 300, 400 or 500, followed by -12, -14 or -16.

USL – Non-insulated crimp on terminal connectors, Two Hole, Series HTL, HRL, HOL;

Cat. No. H, followed by TL, RL or OL, followed by blank, followed by 10 or 16, followed by -6 or -8.

Cat. No. H, followed by TL, RL or OL, followed by blank, followed by 25 or 35, followed by -6, -8 or -10.

Cat. No. H, followed by TL, RL or OL, followed by blank, followed by 50, 70 or 95, followed by -8, -10 or -12.

Cat. No. H, followed by TL, RL or OL, followed by blank, followed by 120, followed by -10, -12 or -14.

Cat. No. H, followed by TL, RL or OL, followed by blank, followed by 150, followed by -12, -14 or -16, followed by blank, followed by CV185.

Cat. No. H, followed by TL, RL or OL, followed by blank, followed by 185, 240, 300, 400 or 500, followed by -12, -14 or -16.

USL – Non-insulated crimp on terminal splices, Series CSL, HTSL;

Cat. No. CSL or HTSL, followed by blank, followed by 10, 16, 25, 35, 50, 70, 95, 120, 185, 240, 300, 400 or 500.

Cat. No. CSL or HTSL, followed by blank, followed by 150, followed by blank, followed by CV185.



Bruce Mahrenholz, Director North American Certification Program

UL LLC

Any information and documentation involving UL Mark services are provided on behalf of UL LLC (UL) or any authorized licensee of UL. For questions, please contact a local UL Customer Service Representative at <http://ul.com/aboutul/locations>



CERTIFICATE OF COMPLIANCE

Certificate Number 20190429-E304648
Report Reference E304648-20070430
Issue Date 2019-APRIL-29

Issued to: TERMINAL LUGS CO LTD
110/6 Moo 2 Krungnont-Jongthanom Rd
Mahasawat, Bangkruay, Nonthaburi 11130 THAILAND

This certificate confirms that representative samples of WIRE CONNECTORS AND SOLDERING LUGS
See Addendum Page.

Have been investigated by UL in accordance with the Standard(s) indicated on this Certificate.

Standard(s) for Safety: UL 486A-486B, Wire Connectors
Additional Information: See the UL Online Certifications Directory at <https://iq.ulprospector.com> for additional information.

This *Certificate of Compliance* does not provide authorization to apply the UL Mark. Only the UL Follow-Up Services Procedure provides authorization to apply the UL Mark.

Only those products bearing the UL Mark should be considered as being UL Certified and covered under UL's Follow-Up Services.

Look for the UL Certification Mark on the product.



Bruce Mahrenholz, Director North American Certification Program
UL LLC

Any information and documentation involving UL Mark services are provided on behalf of UL LLC (UL) or any authorized licensee of UL. For questions, please contact a local UL Customer Service Representative at <http://ul.com/aboutul/locations/>



CERTIFICATE OF COMPLIANCE

Certificate Number 20190429-E304648
Report Reference E304648-20070430
Issue Date 2019-APRIL-29

This is to certify that representative samples of the product as specified on this certificate were tested according to the current UL requirements.

USL: Non-insulated crimp on terminal connectors, Cat. Nos. One Hole – CL 10-6, CL 10-8, CL 16-6, CL 16-8, CL 25-6, CL 25-8, CL 25-10, CL 35-6, CL 35-8, CL 35-10, CL 35-12, CL 50-8, CL 50-10, CL 50-12, CL 70-8, CL 70-10, CL 70-12, CL 95-8, CL 95-10, CL 95-12, CL 120-10, CL 120-12, CL 120-14, CL 120-16, CL 150-10 CV185, CL 150-12 CV185, CL 150-14 CV185, CL 150-16 CV185, CL 185-12, CL 185-14, CL 185-16, CL 240-12, CL 240-14, CL 240-16, CL 300-12 CV300, CL 300-14 CV300, CL 300-16 CV300, CL 300-18 CV300, CL 400-14 CV400, CL 400-16 CV400, CL 400-18 CV400, CL 400-20 CV400, CL 500-12, CL 500-16, CL 500-18, CL 500-20.



Bruce Mahrenholz, Director North American Certification Program

UL LLC

Any information and documentation involving UL Mark services are provided on behalf of UL LLC (UL) or any authorized licensee of UL. For questions, please contact a local UL Customer Service Representative at <http://ul.com/aboutul/locations/>





TERMINAL LUGS CO.,LTD.

110/6 Moo2, Krungnont-Jongthanom Road,Mahasawat,Bangkruey,Nontaburi 11130 (THAILAND)

Tel: (662) 985 2215-8 E-mail: info@terminal-lugs.com Export: E-mail: dianatlug@yahoo.com

www.terminal-lugs.com

