

INTELLIGENT CLEANING ROBOT

Smarter Cleaning Starts Here

Performance-Driven Cleaning Automation



Commercial Cleaning Robots Designed for Real-World Operations

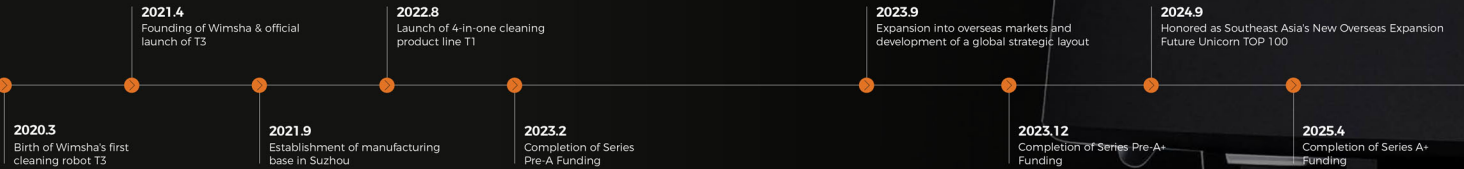


About Wimsha

Founded in 2020 by a team with over 10 years of experience in autonomous driving and robotics, Wimsha is a fast-growing innovator in autonomous commercial cleaning. We design and manufacture fully automated cleaning solutions that are intelligent, adaptable, and ready to deploy across a wide range of environments—from restaurants and retail spaces to airports and industrial sites.

What sets Wimsha apart is our vertically integrated approach: proprietary R&D, in-house manufacturing, and a unified software-hardware platform that enables real-time adaptation, data-driven management, and consistent performance across locations. Our solutions are already operating in over 20 countries, helping global partners reduce operational complexity, improve cleaning quality, and lower labor dependency.

We are not just a product provider—we are your long-term partner in building cleaner, smarter, and more sustainable commercial environments.



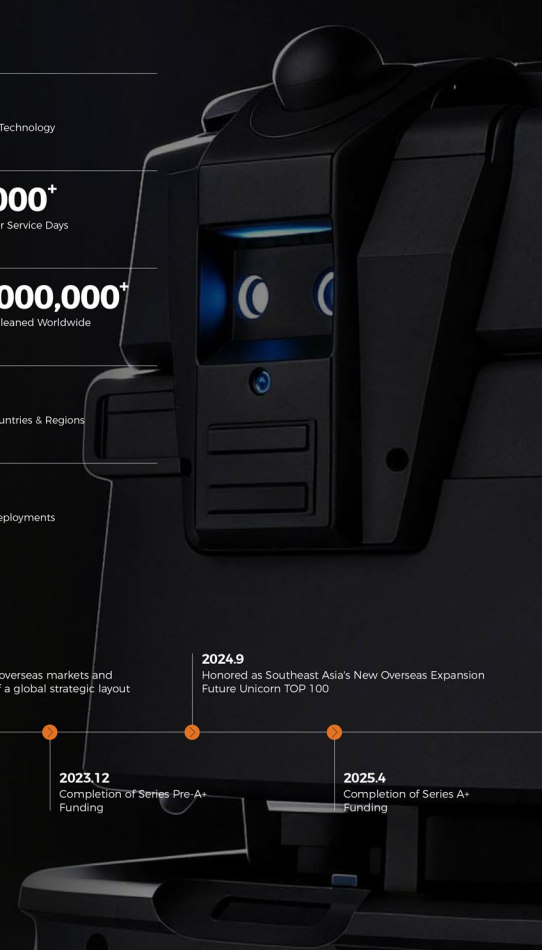
10+
10+ Years of Proven Technology

1,000,000+
1,000,000+ Customer Service Days

2,000,000,000+
2,000,000,000+ m² Cleaned Worldwide

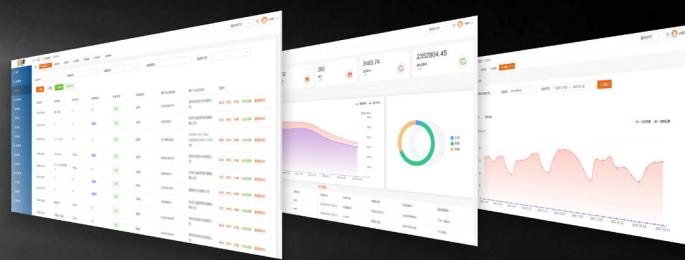
20+
Deployed in 20+ Countries & Regions

1,500+
1,500+ Successful Deployments



Scenario-Driven Technology Platform

Wimsha's robotic systems are built on a three-layer architecture designed to adapt to real operational environments



Standalone Intelligence (Robot-Level Autonomy)

Full-Environment Perception & Autonomous Decision-Making
Multi-sensor fusion SLAM combining vision and LIDAR enables global perception of dynamic environments and provides accurate guidance for autonomous execution. Continuous self-supervised learning and algorithm upgrades improve performance over time without manual reconfiguration.

Environment Adaptation with Minimal Manual Setup
Intelligent environmental understanding and automatic map expansion reduce manual annotation costs. Adaptive mapping enables faster deployment and higher coverage accuracy in large or changing environments. Robots autonomously perform cleaning, docking, charging, water refilling, and drainage, elevator usage, and access control passage.

Safe Navigation in Mixed Traffic
Intelligent yielding and passing behavior enables smooth interaction with moving objects such as vehicles, pedestrians, and other robots.

Contextual Intelligence

Adaptive Navigation & Precision Edge Cleaning
Designed for constantly changing store layouts. Centimeter-level precision mapping enables stable, close-edge navigation in narrow aisles. Precisely cleans dust and debris along shelf bases.

Robust Mapping in High-Dynamic Environments
Employs an industrial-grade, multi-sensor fusion SLAM architecture designed specifically for high-traffic commercial spaces, reducing localization loss caused by environmental changes.

Dynamic Human & Cart Avoidance
Ensures safe, unobtrusive operation during business hours. Instant emergency stop response. Real-time detection and motion prediction for adults, children, and shopping carts.

Intelligent 24/7 Cleaning
Day: Quiet and safe operation.
Night: Fast and powerful deep cleaning.



Scenario-Driven Technology Platform



Intelligent Algorithms



Industrial-Grade Hardware



Flexible Fleet Scheduling



Centralized Operations Platform

Wimbox Intelligent Cloud Hub

Centralized Data & Operational Intelligence

The Wimbox Cloud Hub acts as the operational brain of the entire system. Provides unified aggregation of device status, task execution, cleaning quality, and real-time monitoring of robot operations across sites and regions.

Exception Reporting & Closed-Loop Management

Automatic reporting and alerting for faults, blockages, and abnormal events. Improves operational reliability while reducing downtime.

Visualized Service Reporting

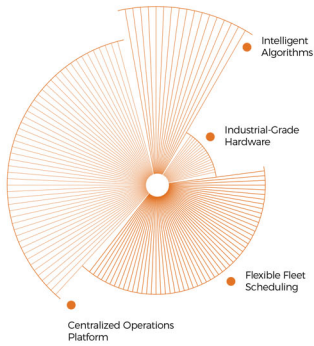
Real-time visibility into operational status and task progress. Automatic generation of service reports for traceability and performance review. Supports historical playback and continuous optimization.

Layered Data Access & Security

Role-Based Access & Data Security. Permissions for cleaners, managers, and decision-makers. Secure, traceable data with encryption, enabling focused management.

OTA & Lifecycle Evolution

Seamless OTA updates across firmware, navigation algorithms, and business logic. Robots receive ongoing new capabilities like improved path planning, enhanced obstacle avoidance strategies, and scenario-specific optimization.



Wimbox

Wimbox Intelligent Cloud Hub

Powering Autonomous Cleaning at Scale
A unified software and cloud platform for fully automated, multi-scenario cleaning operations.

Key Value Highlights

Industrial-Grade Computing

High-performance computing architecture optimized for stable, long-duration operation.

High-Precision Mapping & Localization

Dynamic mapping updates with accurate positioning across large and complex environments.

360° 3D Perception

Full-scene awareness with no blind spots, enabling safe and reliable operation.

Predictive Obstacle Avoidance

Real-time environment prediction with adaptive speed control and dynamic path planning.

AI-Driven Scenario Adaptation

Powered by large-scale operational data and continuous algorithm optimization.

Flexible Task Configuration

One-click task deployment and on-demand task initiation from any location.

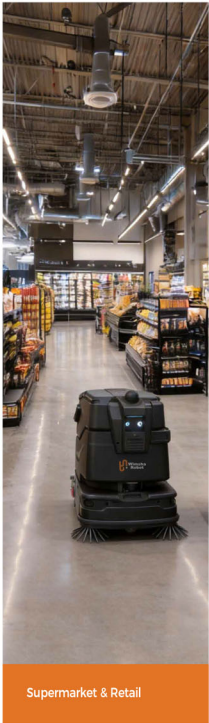
End-to-End Digital Operations

Cloud-based monitoring, diagnostics, and lifecycle management in a single platform.

Open & Customizable Integration

Supports customized system integration for enterprise and partner ecosystems.

APPLICATION SCENARIOS



Supermarket & Retail



Public Transportation



Office Building



Industrial & Logistics



Hospitality



Parking Garage

T1 Compact Commercial Cleaning Expert

Scrubbing | Sweeping | Vacuuming | Dust Mopping

Designed for narrow and complex spaces.
Automatic charging and auto water refill & drainage.
Easily passes through 80 cm narrow corridors.



Specification	
Dimensions	620 mm (L) x 550 mm (W) x 700 mm (H)
Net Weight	70 kg
Dust Tank Capacity	4 L
Water Tank Capacity	29 L (Clean Water Tank 14 L Waste Water Tank 15 L)
Runtime	Scrubbing up to 4 h · Dust Mopping 12 h
Brush Pressure	5 kg
Cleaning Efficiency	Up to 1200 m ² /h
Sweeping Width	510 mm
Scrubbing Width	420 mm
Safety System	3D LIDAR + 2D LIDAR + RGBD Camera + Depth camera + Safety Bumper + Anti-Drop
Noise Level	< 68 dB(A)
Battery	LiFePO ₄ , Battery, 24 V
Navigation	3D LIDAR Navigation
Workstation	All-in-One Water & Power: Auto water refill and drain, Charging

Product Advantages

- Multi-Function Cleaning | Four-in-One**
Flexible one-button switch for four functions: Scrubbing + Sweeping + Vacuuming + Dust Mopping
- Autonomous Charging & Water Exchange**
Automatic Charging & Water Exchange – Fully unmanned. Compact and adaptable: all-in-one water & power station minimizes site disruption.
- Extended Runtime**
Up to 4 h scrubbing and 12 h dust mopping per charge.
- 10-Second Quick Maintenance**
Modular design allows fast assembly/disassembly for efficient operation.
- Retractable Handle**

- Adjustable handle height to suit different operation needs, enabling manual cleaning, autonomous deployment.
- Compact & Agile Design**
Dimensions: 620 mm (L) x 550 mm (W) x 700 mm (H)
Compact and highly maneuverable.
- 0 Distance Edge Cleaning**
Side brushes hug walls to clean every corner, ensuring maximum work quality.
- Low-noise Operation**
Comfortable, unobtrusive cleaning: Noise < 68 dB, suitable for office areas, hospitals, hotels, and other quiet environments.

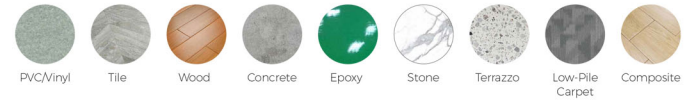
Hydro-Pneumatic Workstation



Specification	
Dimensions	500mm(L) x 575mm(W) x 550mm(H)
Weight	20KG
Input Voltage	100-240V
Output Voltage	24 V
Clean Water Refill	Supported
Recovery Water Drain	Supported

- Automatic Charging
- Automatic Water Refill & Drain
- Easy Deployment
- Compact & Aesthetic Design

Surface Compatibility



T2 for Small to Mid-Sized Commercial Spaces

Dual roller brush /Dual disc brush version
Flexible options, deep cleaning.



Specification	Disc Brush Version	Roler Brush Version
Dimensions	660mm(L) x 550mm(W) x 670mm(H)	
Net Weight	70 kg	
Dust Box Capacity	4 L	
Water Tank Capacity	40 L (Clean Water 19 L Recovery Water 21 L)	
Runtime	Scrubbing up to 4 h · Dust mopping 12 h	
Cleaning Efficiency	Up to 1200 m ² /h	
Brush Pressure	Up to 20 kg	5 kg
Sweeping Width	/	510 mm
Scrubbing Width	400 mm	420 mm
Safety System	3D LIDAR + RGB Camera + Line Laser + Depth camera + Safety Bumper + Anti-Drop Protection	
Noise Level	< 68 dB(A)	
Battery	LiFePO ₄ , Battery, 24 V	
Navigation	3D LIDAR Navigation	
Workstation	All-in-One Water & Power: Auto water refill & drain, Charging, Self-cleaning, Detergent Dosing Pressurized Drainage, Clogging Protection	

Designed for Versatile Commercial Applications

Compact Design | Exceptional Maneuverability
Designed to operate efficiently in tight layouts and space-constrained areas.
Minimum corridor width: 70 cm
Minimum turning radius: 100 cm
Ideal for high-density, narrow environments.

360° | Full Field Coverage
3D LIDAR provides wide-field perception.
Dual side cameras eliminate blind spots at close range.
Multi-sensor fusion adapts to complex and dynamic environments, ensuring safe and stable operation.

40 L Water Capacity | Extended Runtime in a Small Footprint
Clean water: 19 L
Recovery water: 21 L
Longer runtime despite compact size.
Maximizes cleaning time while maintaining a compact form factor—reducing refill frequency and increasing productivity.

2 Versions | Multi-Configuration Cleaning

- A. Dual-Disc Version - Deep Cleaning Power**
Sweep, scrub, vacuum, and mop simultaneously, optimized for stubborn dirt and heavy oil buildup.
- B. Dual-Roll Brush Version - 4-in-1 Cleaning Efficiency**
Sweep, scrub, vacuum, and mop simultaneously, optimized for dusty, sandy environments and high-frequency daily cleaning.

30 s | Built for Operational Efficiency
Magnetic brush mounting enables tool-free removal in 30 seconds.
Battery supports 30-second hot swap.

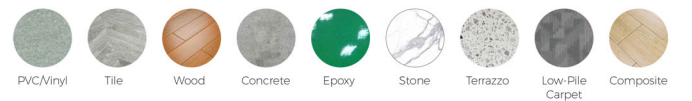
Hydro-Pneumatic Workstation



Specification	
Dimensions	345mm(L) x 420mm(W) x 530mm(H)
Weight	22KG
Input Voltage	100-240V
Output Voltage	24 V
Clean Water Refill	Supported
Recovery Water Drain	Supported
Self-cleaning	Supported
Automatic Detergent Dosing	Supported

- Automatic Charging
- Automatic Water Refill & Drain
- Easy Deployment
- Compact & Aesthetic Design

Surface Compatibility



T3 PLUS Medium-to-Large Space Cleaning Expert

More Reliable Cleaning - Industrial Environment Specialist

Scrubbing Dust Mopping



Specification	
Dimensions	860 mm (L) x 600 mm (W) x 1100 mm (H)
Net Weight	150 kg
Water Tank Capacity	95 L (Clean Water 50 L; Recovery Water 45 L)
Runtime	5.5 h
Charging Time	4 h
Cleaning Efficiency	Up to 2000 m ² /h
Scrubbing Width	500 mm
Speed Range	0 - 1 m/s
Safety System	3D LIDAR + 2D LIDAR + RGBD Camera + Depth camera + Safety Bumper + Anti-Drop Protection
Noise Level	< 70 dB(A)
Battery	LiFePO ₄ Battery, 24 V
Navigation	3D LIDAR Navigation
Workstation	All-in-One Water & Power: Auto water refill & drain, Charging, Clogging Protection

Product Advantages

95 L Large Water Tank Capacity

Clean 50 L - Recovery 45 L: one fill supports up to 2 hours of continuous scrubbing.

Up to 2000 m²/h Cleaning Efficiency

Theoretical maximum cleaning efficiency: 2000 m²/h.

5.5-h Extended Runtime

Single charge: 5.5 h scrubbing. Supports 30-second battery quick-swap for continuous operation.

Industrial-Grade Charging

Supports up to 30 A charging current to meet industrial deployment requirements.

Compact Water & Charging Workstation

Easy deployment, and blends naturally with site environments.

Safety & Obstacle Avoidance

Multi-sensor fusion: 3D LIDAR + 2D LIDAR + RGBD Camera + Depth camera + Safety Bumper + Anti-Drop. 360° environmental perception for comprehensive protection of people, robot, and property.

Smart Operations & Maintenance

Real-time status via mobile app. Cloud O&M platform for centralized monitoring. Automatic generation of customized performance reports.

Scheduling & System Integration

Integrates with elevators, access control, and turnstiles for seamless site-wide coordination.

Hydro-Pneumatic Workstation



Specification	
Dimensions	430mm(L) x 540mm(W) x 460mm(H)
Weight	33KG
Input Voltage	100-240V
Output Voltage	24 V
Clean Water Refill	Supported
Recovery Water Drain	Supported

Automatic Charging Automatic Water Refill & Drain
Easy Deployment Compact & Aesthetic Design

Surface Compatibility



T5 Advanced Cleaning Expert for Large & Demanding Spaces

Medium-to-Large Space Cleaning Specialist



Specification	
Dimensions	860 mm (L) x 600 mm (W) x 1100 mm (H)
Net Weight	150 kg
Water Tank Capacity	95 L (Clean Water 50 L; Recovery Water 45 L)
Runtime	5.5 h
Charging Time	4 h
Cleaning Efficiency	Up to 2000 m ² /h
Scrubbing Width	500 mm
Speed Range	0-1 m/s
Safety System	3D LIDAR + 2D LIDAR + RGBD Camera + Depth camera + Safety Bumper + Anti-Drop Protection
Noise Level	< 70 dB(A)
Battery	LiFePO ₄ Battery, 24 V
Navigation	3D LIDAR Navigation
Workstation	All-in-One Water & Power: Auto water refill & drain, Charging, Clogging Protection

Designed for Heavy-Duty Performance and Operational Efficiency

20 / 30 kg Scrubbing Pressure | Built for Heavy Contamination

High-pressure dual-disc scrubbing system. Effectively removes oil stains, tire marks, and embedded dirt. Delivers consistent results in demanding environments.

5.5h | Long Runtime

104 Ah battery supports full-night cleaning, ensures uninterrupted operation. Optimized for overnight and off-hour operations.

95 L Water System | Fewer Refills, Higher Productivity

Clean 50 L & Recovery 45 L: fewer refills, more efficient workflow. Less time spent refilling, more time cleaning—improving overall operational efficiency.

30s | Easy Maintenance

Lift-up water tank design for easy access. Magnetic brush mounting enables tool-free removal in 30 seconds. Battery supports 30-second hot swap.

360° | Full Safety Awareness

3D LIDAR provides wide-field perception. Dual side cameras eliminate blind spots at close range. Multi-sensor fusion adapts to complex and dynamic environments.

70 dB | Quiet Operation

Low-noise scrubbing, ideal for nighttime or noise-sensitive areas.

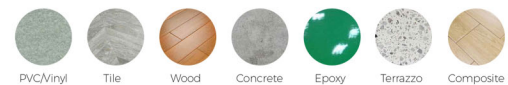
Hydro-Pneumatic Workstation



Specification	
Dimensions	430mm(L) x 540mm(W) x 460mm(H)
Weight	33KG
Input Voltage	100-240V
Output Voltage	24 V
Clean Water Refill	Supported
Recovery Water Drain	Supported

Automatic Charging Automatic Water Refill & Drain
Easy Deployment Compact & Aesthetic Design

Surface Compatibility



Data-Driven Visual Operations

Intelligent Layered Data Management

Elevating cleaning from simple task execution to data-visible, performance-measurable, and fully traceable operations.



Let Data Guide Your Cleaning

Data Tiering · Access Control · AI-Driven Insights

Role-Based Access Control

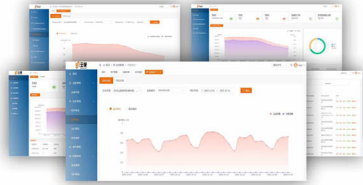
Role-based permission management ensures structured data access across all organizational levels - from frontline operators and project managers to corporate executives.

Data Lifecycle Management

Structured storage and processing of raw logs, cleaned data, and operational results across the entire data lifecycle.

Secure & Controllable Data Framework

Critical data can be stored locally or synchronized on demand. Encrypted transmission with traceable access permissions ensures data security.



Data Insights and AI-powered Presentation

Unified Multi-Platform Visualization

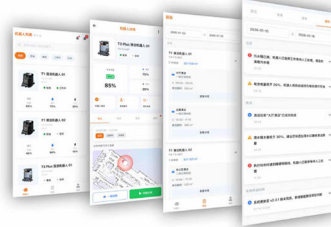
Accessible across Cloud Dashboard (website), Mobile App, Robot Interface.

Real-Time Operational Command Center

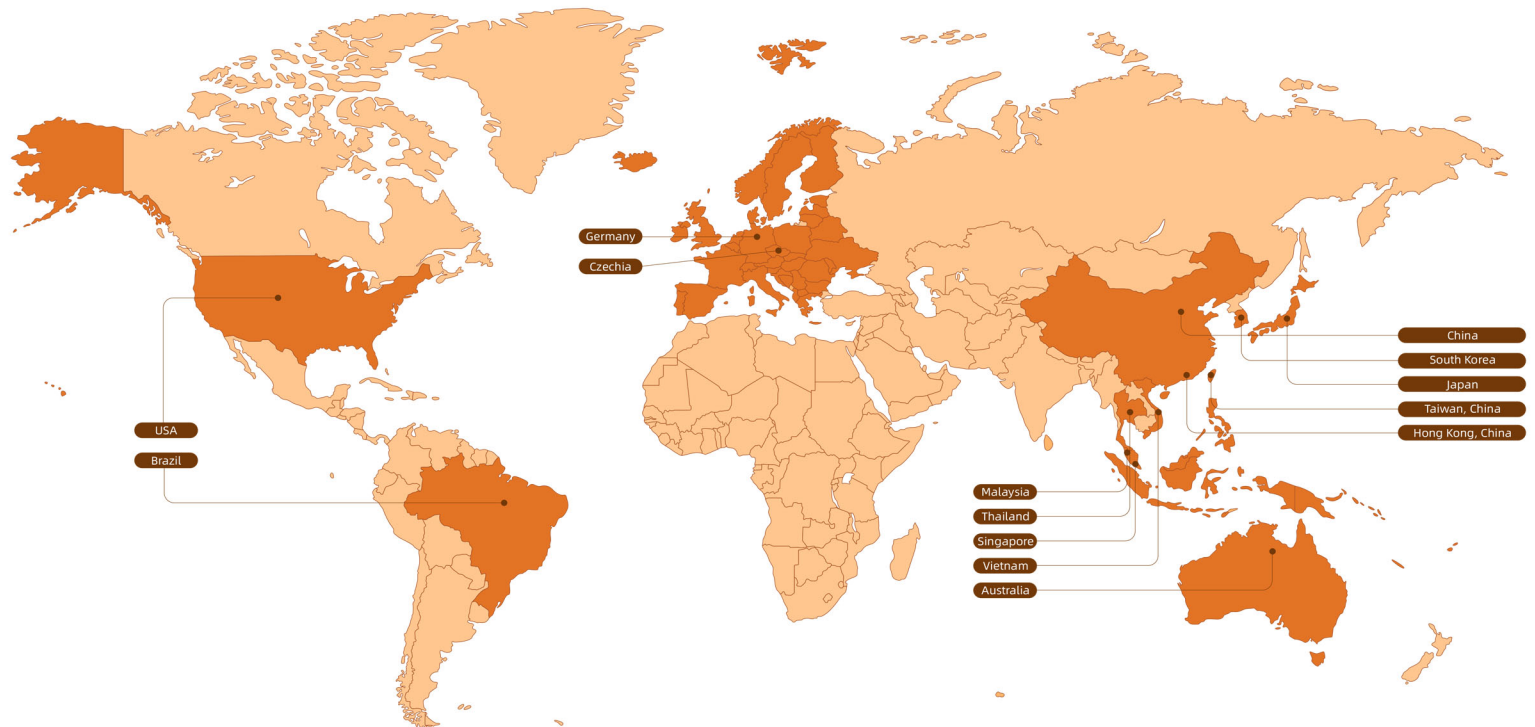
Monitor cleaning progress, operational efficiency, coverage rate, and exception alerts in one dashboard for immediate decision-making.

AI-Powered Business Insights

Automatically generated daily and weekly performance reports. Supports cleaning area comparison and trend analysis.



ROBUST AFTER-SALES SUPPORT SYSTEM



Our Clients



Hikrobot | Project Manager

In real industrial workshops and campus environments, Wimsha robots adapt well to high-frequency, long-duration cleaning tasks, maintaining stable operation amid frequent movement of personnel and equipment. From a project implementation perspective, they effectively handle routine floor cleaning without disrupting normal production, reducing manual labor input and minimizing management interference with cleaning operations.



Large Indoor Tennis Facility in Japan | Operations Manager

In store environments with high requirements for quietness and cleanliness, Wimsha robots operate perfectly with excellent noise control, causing minimal impact on customer experience. While ensuring cleaning quality, the robots take over repetitive daily tasks, reducing staff scheduling and management pressure and enabling more stable and controlled operations.



Well-known Beauty Salon in Korea | Store Manager

Before adopting cleaning robots, store cleaning relied heavily on manual labor, often constrained by noise and timing during peak business hours, which affected customer experience. After setting up Wimsha robots, they operate quietly and maintain consistent cleaning performance.



Nandu Property | CEO

Across multiple live projects, Wimsha robots have demonstrated mature performance in stability, continuous operation, and adaptability to complex property environments. They integrate smoothly into our daily management systems and operational workflows. The robots not only relieve frontline staff from repetitive tasks, but also provide a more controllable and replicable solution in cleaning quality, operational rhythm, and standardized management.

Our Clients

Sun Robotics & AI Co.,Ltd

Official distributor, selling , marketing and after-sales service
all Wimsha products in Thailand

198/1 Moo 2, Soi Wat Bang Nang Peng, Ban Rakat, Bang Bo, Samut Prakan 10560

Tax ID : 0105550092475

Tel : 02-102-5858

Email : robots@sunrobotics.co.th

Line Official : @sunrobot

Website : sun-robots.com

