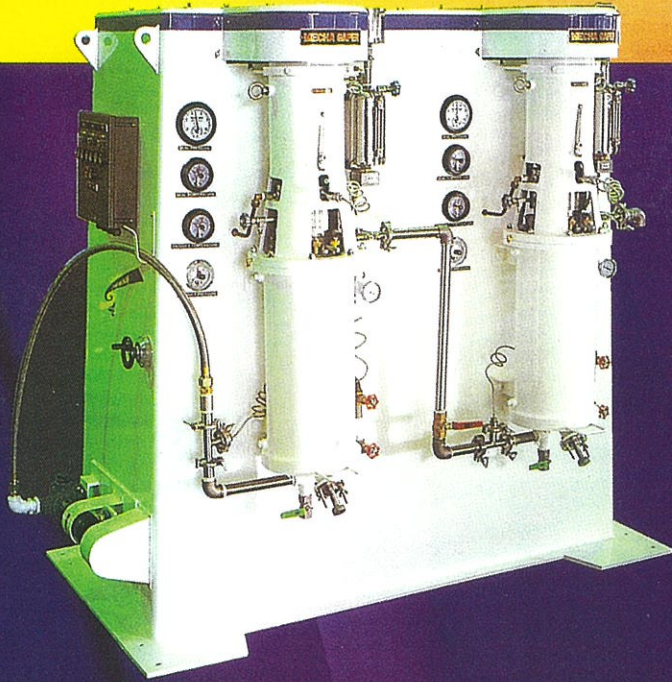


VESSMILL

Highly Efficient Micro Wet
Grinding Equipment

MECHA GAPER GRAIN MILL

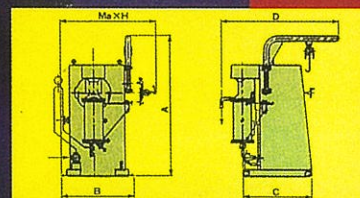
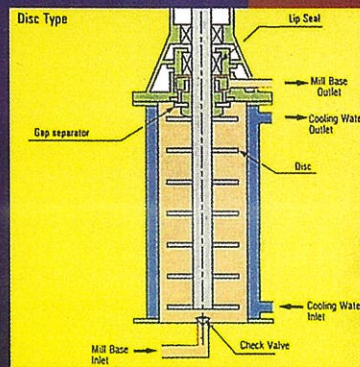
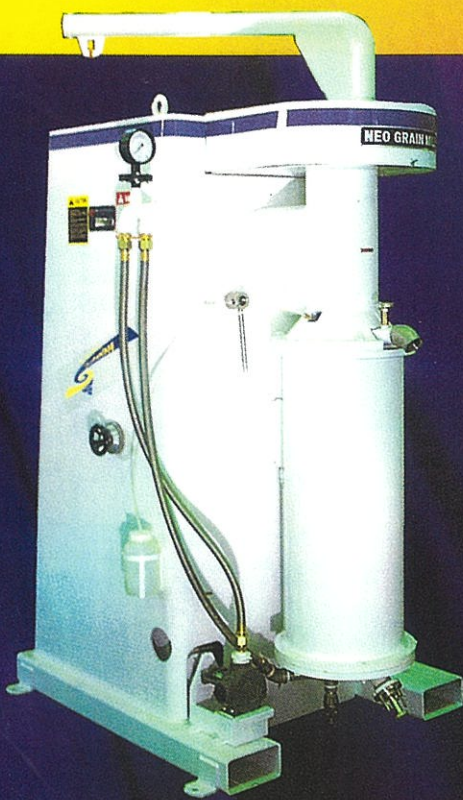


Specifications (Vertical Type)

Model	Vessel (l)	Main Motor (KW)
GM-G2M	2	1.5
GM-G5M	5	3.7
GM-G20M	20	15,20
GM-G50M	50	22,30
GM-G100M	100	30,37,45

- Highly efficient wet grinding machine
- For viscosity of up to 12,000 cps
- A unique double mechanical seal designed for operating pressure of up to 5 kg/cm²
- Vessel is made of wear resistant steel
- Construction is suitable for abrasive millbase
- Widely used in continuous grinding production
- A unique tungsten gaper for grinding medium separation
- Enclosed design prevents vaporisation of solvent
- The machine is fitted with safety features such as pressure, temperature and level sensors
- Timer (optional)

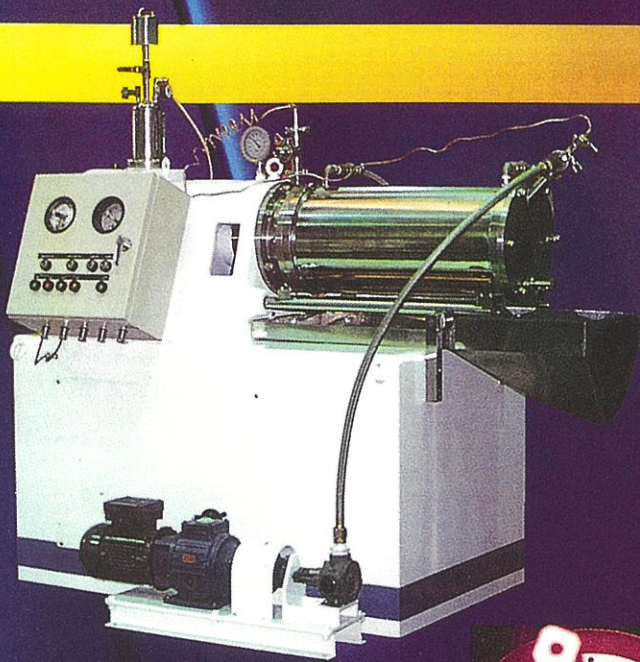
NEO GRAIN MILL



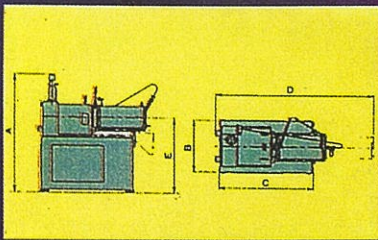
- Low cost and highly efficient pressurized mill
- For grinding viscosity of up to 3,000 cps
- A unique gaper designed to improve separating efficiency
- Lip seal designed for operating pressure of about 0.5 kg/cm²
- Simple operation and easy maintenance
- No vaporisation of solvent

Model	Vessel Capacity (l)	Motor (kw)		Peripheral Speed m/sec	Weight (kg)	A	B	C	D	H	Production 50Hz //Hr
		Main	Pump								
GM-G5L	5	7.5	0.75	10	680	1350	950	900	1350	1400	0-380
GM-G20L	20	15	1.5	10	1180	2025	1050	1000	1663	1500	0-800
GM-G50L	50	30	1.5	10	1500	2260	1150	1150	1760	2663	0-1300
GM-G100L	100	30	1.5	10	1800	2725	1300	1415	-	2752	0-1300

MECHA GAPER GRAIN MILL

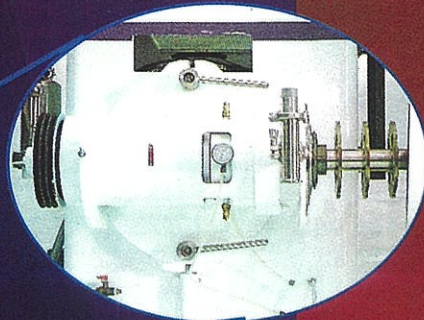
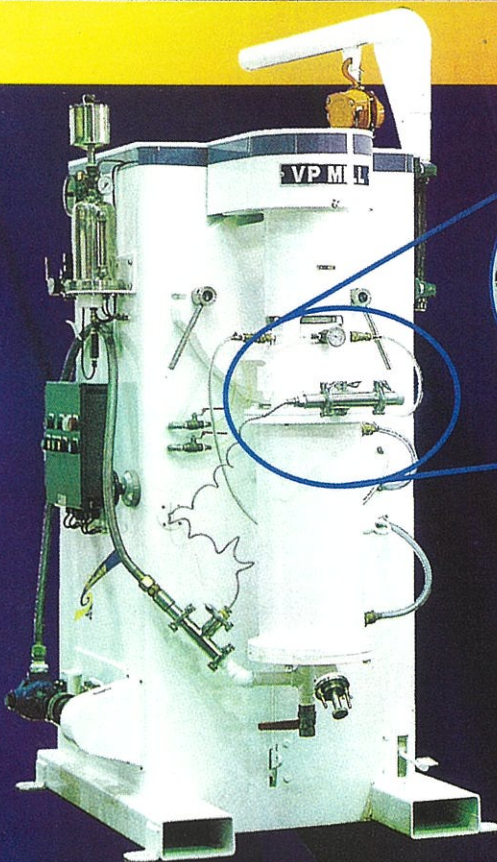


- The shaft is available in double mechanical seal
- Operating pressure: Double mechanical - 5kg/cm²
- Simple operation and easy maintenance
- High performance at low cost, the grinding viscosity is up to 10,000 cps
- Using tungsten gaper for grinding medium separation
- Can be connected to two or three mills, operating together as part of a multiple grinding process
- No vaporisation of solvent

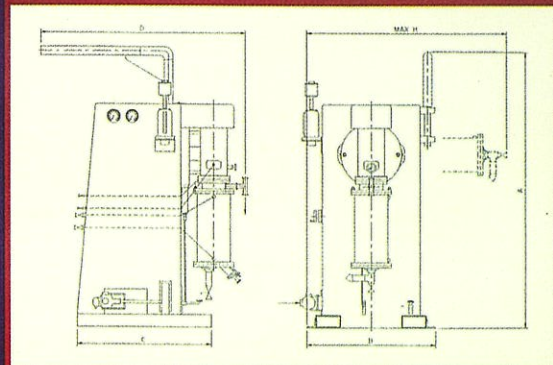
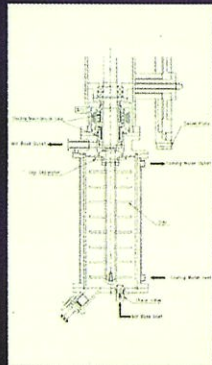


Model	Vessel Capacity (l)	Motor (kw)		Peripheral Speed m/sec	Weight (kg)	A	B	C	D	E
		Main	Pump							
GMH-L	1	1.5	0.2	8 • 10 • 12 • 15	60	725	350	500	600	360
GMH-G2M	2	3.7	0.2	8 • 10 • 12	80	835	400	530	800	430
GMH-G5M	5	7.5	0.75	10 • 12	700	1473	600	900	1412	880
GMH-G20M	20	15 • 22	0.75, 1.5	10 • 12	1200	1595	790	1190	1748	990
GMH-G50M	50	30 • 37	1.5	10 • 12	1500	1950	940	1500	2501	1225
GMH-G100M	100	37 • 45	2.2	10 • 12	2500	2050	1100	1950	3820	1400

PRESSURIZED VERTICAL VESSMILL



- Highly efficient wet grinding machine
- For viscosity of up to 12,000 cps
- Double mechanical seal allows operating pressure of 5kg.cm²
- Gap separation system
- Maintenance are easy with the specially designed swivel plate



Model	Vessel Capacity (l)	Motor (kw)		Peripheral Speed m/sec	Weight (kg)	A	B	C	D	H
		Main	Pump							
GMV-20M	20	15	1.5	12	1200	2220	1050	1100	1677	1630
GMV-50M	50	30	1.5	12	1500	2455	1150	1250	1734	2045



NISMIX MACHINERY & DISTRIBUTION

(A Division of Star Union Engineering Pte Ltd)

7, Kian Teck Avenue, Singapore 628897

Tel: (65) 6262 2213 Fax: (65) 6262 2210

Email: nismix@singnet.com.sg Website: www.nismix.com.sg