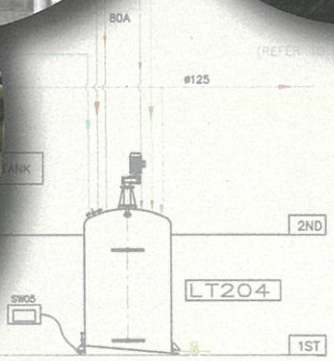
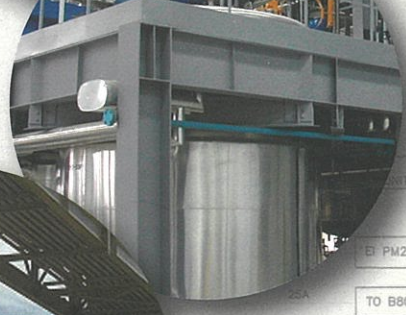




# AUTOMATION PROCESS CONTROL



The INTEGRATED SOLUTION  
for your PRODUCTION NEEDS.

# Design, construction, installation of automated paint production plants.

Nismix PLANT AUTOMATION SOLUTION (P.A.S) will help you to evaluate your process and configure to provide you the evolutionary operability of your plant. Nismix will bring the right solution to reduce wastes, increase production performance, improve quality, design and match the right equipment to your needs. Nismix able to manage the entire project from the feasibility study, basic engineering and detail design till delivery, start-up and product training of the system on your new plant or modernization project of the existing plant.

## The **5C** functions on plant automation solution:

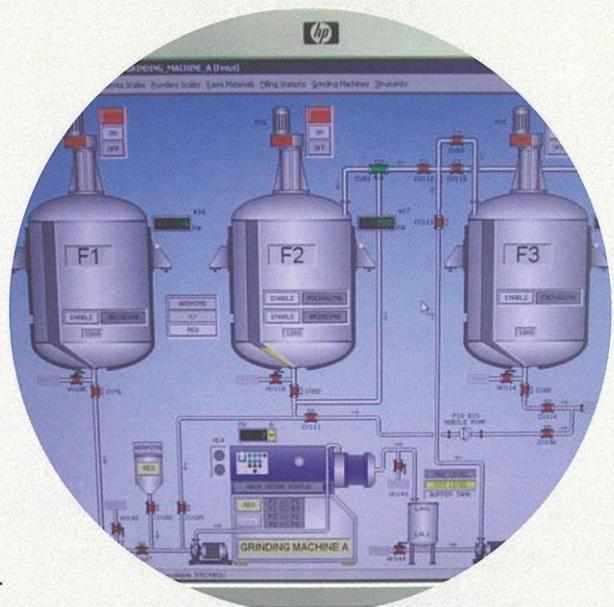


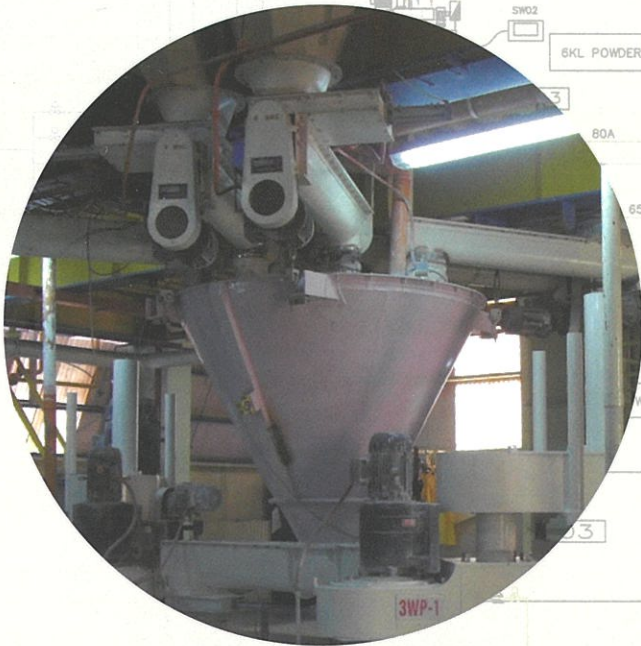
### CREATION

- Paperless operation.
- Save cost.
- User friendly.
- Quick shift of production requirement.
- Achieve productivity objectives through selecting the optimised process.
- Full receipt management with complete tractability.
- Electronic management on production/scheduling.

### COMMAND

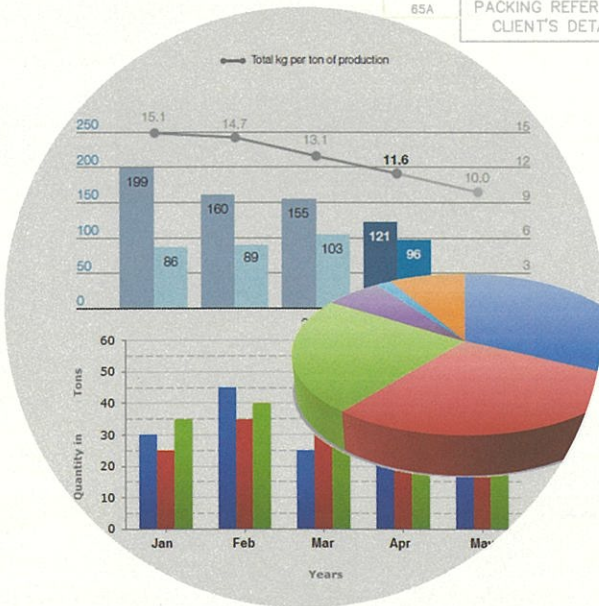
- Modular Batch Automation (MBA), batch process into sequence of small modules.
- Enable to command the equipment and execute process sequences according to recipe.
- Perform simulation trials before action - reduce mistakes and save cost.
- Overview of the production processes and activities at a glance.





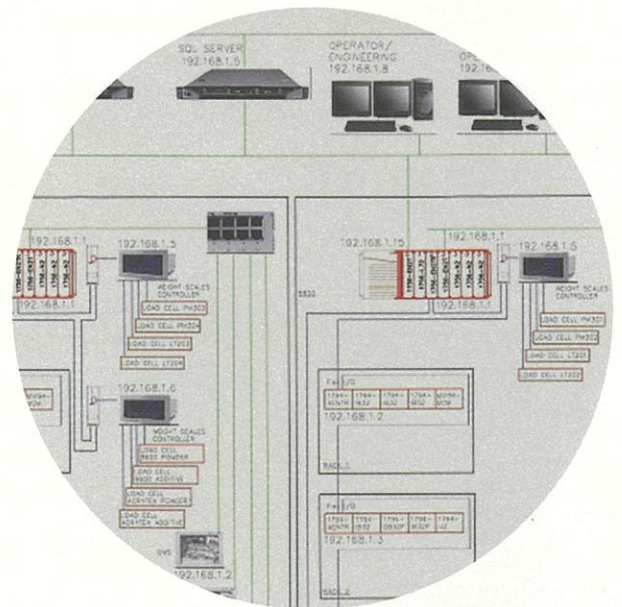
## CONTROL

- Allocate the resources and optimization of equipment use: dispersers, mixers, pumps etc.
- Allow to develop new/revised formulations quickly and easily.
- Safeguard for product formulations.
- Configure permission to specify users to view or perform actions.



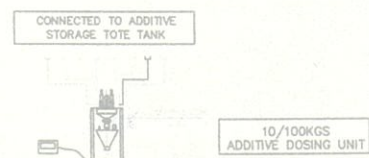
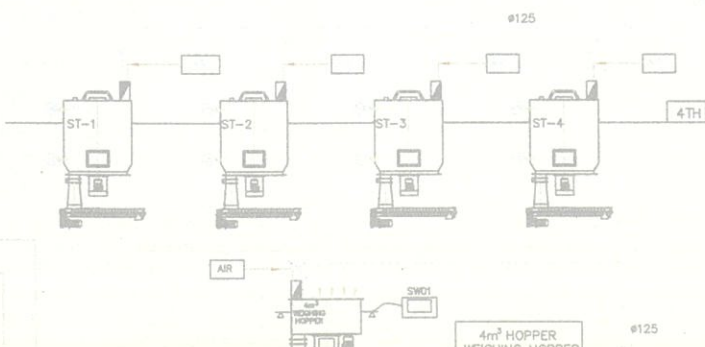
## COLLECTION

- Live data recorded and configured into easy understanding reports, such as batch listing, batch summary, material usage, tracking etc.
- Analyze and evaluate to optimize the process and cost benefit.
- Enable to re-design the process matching the real needs from data.
- Active material management / inventory system / tracking system.



## COMMUNICATION

- Real time information and live data reference for analyze complex processes and decision making.
- Data transfer throughout your integrated architecture system - production / inventory / marketing / management.
- Able to provide a link between ERP and other similar software packages.
- Web based server to communicate with handheld devices (smart phones, ipad), desktop PC, HMI(at site) etc.



# Applications

- Decorative paints (water & solvent based).
- Industrial paints.
- Automotive paints.
- Coil coatings.
- Marine paints.
- Printing inks.
- Adhesives.
- Cement mixing plants.

# Nismix services

## *Design*

- Feasibility study.
- Testing of solutions - plant simulation.
- Process improvement.

## *Project management*

- Equipment procurement and construction.
- Site supervision.
- Commissioning and start-up works.

## *After implementation services*

- Personnel training.
- Equipment maintenance.



## *Contact us*

**Nismix Machinery & Distribution**  
7, Kian Teck Avenue,  
Singapore 628897.

**Tel:** 65-62622213

**Fax:** 65-62622210

**Email:** [nismix@singnet.com.sg](mailto:nismix@singnet.com.sg)

**Website:** [www.nismix.com](http://www.nismix.com) / [www.nismix.com.cn](http://www.nismix.com.cn)