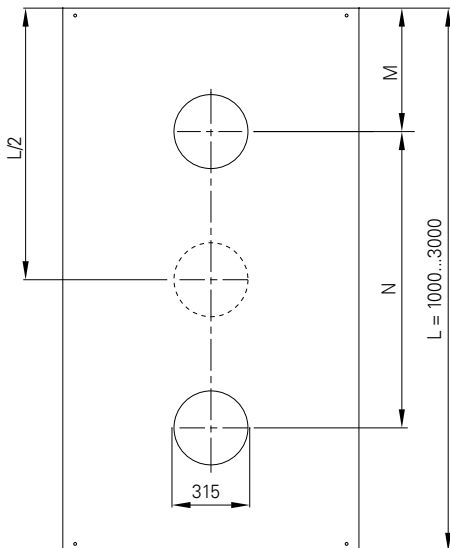
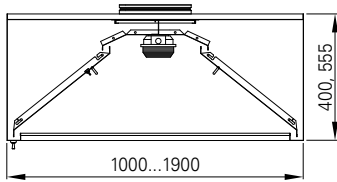
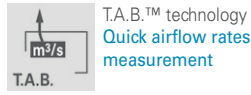


# KVV HOOD FOR DISHWASHING AREA

One-way flow



## APPLICATIONS

KVV hoods are single-extraction hoods. They are designed to remove the steam released by dishwashing equipment and are equipped with specific deflectors to separate the steam from the extracted air.

- Better hygiene thanks to less condensation in the extract ducts.
- Quick and easy commissioning. Hoods delivered "ready to install", with all accessories included, such as T.A.B.™ taps and balancing dampers for quick balancing on-site.
- Sturdier and easier to clean: Less parts and less joints. Stainless steel construction.

## DIMENSIONS

### LOCATION OF CONNECTIONS (mm)

The dimensions shown are for modular sections only. Longer hoods are assembled using a combination of separate modules to make delivery and on-site handling easier.

Number of exhaust connections to be assessed in relation to the length of the modules and the calculation of airflow rates depending on the configuration of the equipment.

L	M	N
1000	-	-
1500	375	750
2000*	500	1000
2500*	500	1250
3000*	500	1500

\* Starting 2100 mm, the deflectors come in two parts.

### WEIGHT (h=555 mm, kg)

L/W	1100	1300	1500	1700	1900
1000	53	56	59	62	65
1500	63	66	69	72	75
2000	79	84	88	92	96
2500	91	96	101	106	111