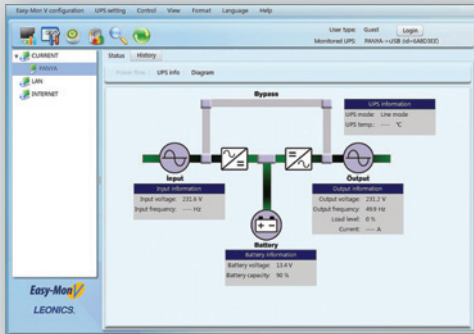


U • Sine

LINE INTERACTIVE PURE SINE WAVE UPS

Easy-Mon V

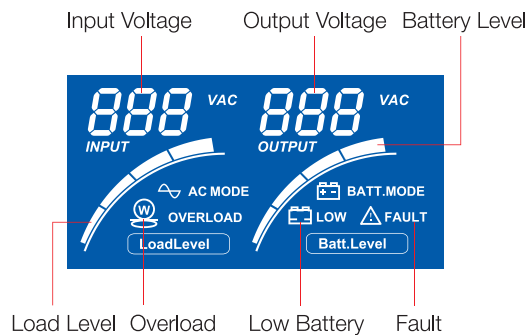
UPS Monitoring and Management Software



- Control and monitoring a single UPS to multiple UPS's via LAN and internet
- Power analysis graph; event statistics, history data diagram
- Real-time dynamic graphs of UPS data (voltage, frequency, load level, battery level)
- Warning notifications via audible alarm and pop-up screen
- Scheduled UPS on/off and battery test
- Password security protection and remote access management
- Compatible with Windows 2000/2003/XP/Vista/2008/2012, Windows 7/8/10/SBS2011, Redhat Linux 8/9, Redhat enterprise AS3/AS5/AS5.2/AS6, SUSE Linux10, Cent OS 5.4/6.3, Ubuntu 8.x/9.x/10.x/12.04/14.04, Fedora 5, Solaris 10, Mac OSX 10.6/10.7/10.8/10.9x/10.10

• COMPREHENSIVE LCD DISPLAY

Graphic LCD display show UPS status, input voltage, output voltage, load level and battery level.



• MICROPROCESSOR CONTROL

Digital system for improved reliability and efficiency.

• BUCK / BOOST STABILIZER

Line-stabilizer smooths out voltage fluctuations to protect connected load and prolong battery life.

• SURGE PROTECTION FOR TELEPHONE LINE

Protects equipment and data against surges coming through telephone line.

• USB CONNECTIVITY

USB communications facilitates communications between UPS and a PC (via a USB cable) through Easy-Mon V Software.

• EASY-MON V SOFTWARE*

The UPS monitoring and management software allows users to control and monitor a single UPS to multiple UPS's in a LAN or via the internet. Perfect for home users and enterprises.

* Free download at www.lpsups.com



MASCI
ISO 9001 QMS 01068/349
ISO 14001 EMS 01007/045



NSC-TIS-TS 17021
QMS 002 / EMS 005



TIS 1291 Part 1-2553 (2010)
TIS 1291 Part 2-2553 (2010)
TIS 1291 Part 3-2555 (2012)

SPECIFICATIONS

MODEL		USV-1000	USV-1500
POWER RATING		1000VA / 600W	1500VA / 900W
SYSTEM	UPS system	Digital line interactive UPS with stabilizer	
	Control system	Microprocessor 8 bit	
	Stabilizer function	Buck / Boost	
INPUT	Input voltage	220Vac ± 25%	
	Frequency	50 Hz ± 10% (60 Hz ± 10%) auto sensing	
OUTPUT	Voltage on AVR	220 Vac ± 10%	
	Voltage on battery	220 Vac, 50 / 60 Hz	
	Wave form	Pure sine wave	
PROTECTION	Over voltage	Mains to UPS backup 220Vac + 25%	
	Under voltage	Mains to UPS backup 220Vac - 25%	
	Transfer time	2 - 6 ms	
	Overload (AC mode)	yes	
	Overload (DC mode)	yes	
	Output short circuit	Software detection	
	Surge energy dissipation	312 Joules / 2 msec.	
	Power dissipation	1,000,000 W within 100 microsec.	
	Acoustic noise	Less than 45 dBA at 1 metre	Less than 55 dBA at 1 metre
BATTERY	Type	Sealed lead acid (maintenance free)	
	Backup time	15 - 40 min. (depending on connected load)	
	Continuous recharging time	12 hours (90% after full discharged)	
OUTPUT OUTLET	Number of backup outlets	5	
	Number of surge protection outlet	1	
FEATURES	AC / DC start	yes	
	Communication interface	USB port	
	Monitoring and management software	Free download Easy-Mon V software ⁽¹⁾ at www.lpsups.com	
	Surge protection for telephone line	yes	
	Surge protection for LAN line	option	
	Surge protection for laser printer	yes	
INDICATOR	LCD display	AC mode, Battery mode, Load level, Battery level, Input voltage, Output voltage, Overload, Fault and Low battery	
AUDIBLE ALARM (BUZZER)	Battery mode	Audible beep every 10 seconds	
	Low battery	Audible beep every second	
	Overload	Audible every 0.5 seconds	
	Battery replacement	Audible beep every 2 seconds (Battery test function on Easy-Mon V software)	
	Fault	Continuous beep	
ENVIRONMENT	Temperature	0 - 40°C	
	Relative humidity	0 - 90% (non-condensing)	
CONFORMANCE	Design regulation	EMC category C2	
DIMENSION	W x H x D (mm.)	145 x 220 x 367	
WEIGHT	Approximate in kg	14	15

⁽¹⁾ Easy-Mon V software compatible with Windows 2000 / 2003 / XP / Vista / 2008 / 2012, Windows 7 / 8 / 10 / SBS2011, Redhat linux 8 / 9, Redhat enterprise AS3 / AS5 / AS5.2 / AS6, Suse Linux 10, Cent OS 5.4 / 6.3, Ubuntu 8.x / 9.x / 10.x / 12.04 / 14.04, Fedora 5, Solaris 10, Mac OSX 10.6 / 10.7 / 10.8 / 10.9x / 10.10
Continuous product development is our commitment. In that manner, the above specifications may be changed without prior notice.

Authorized Distributor

LEO POWER SUPPLY CO.,LTD.

27, 4th Floor, Soi Bangna-Trad Rd 34, Bangna Tai, Bangna, Bangkok 10260 THAILAND
Tel. 0-2746-9500 Fax. 0-2746-8712 e-mail : marketing@lpsups.com, www.lpsups.com

Authorized Dealer