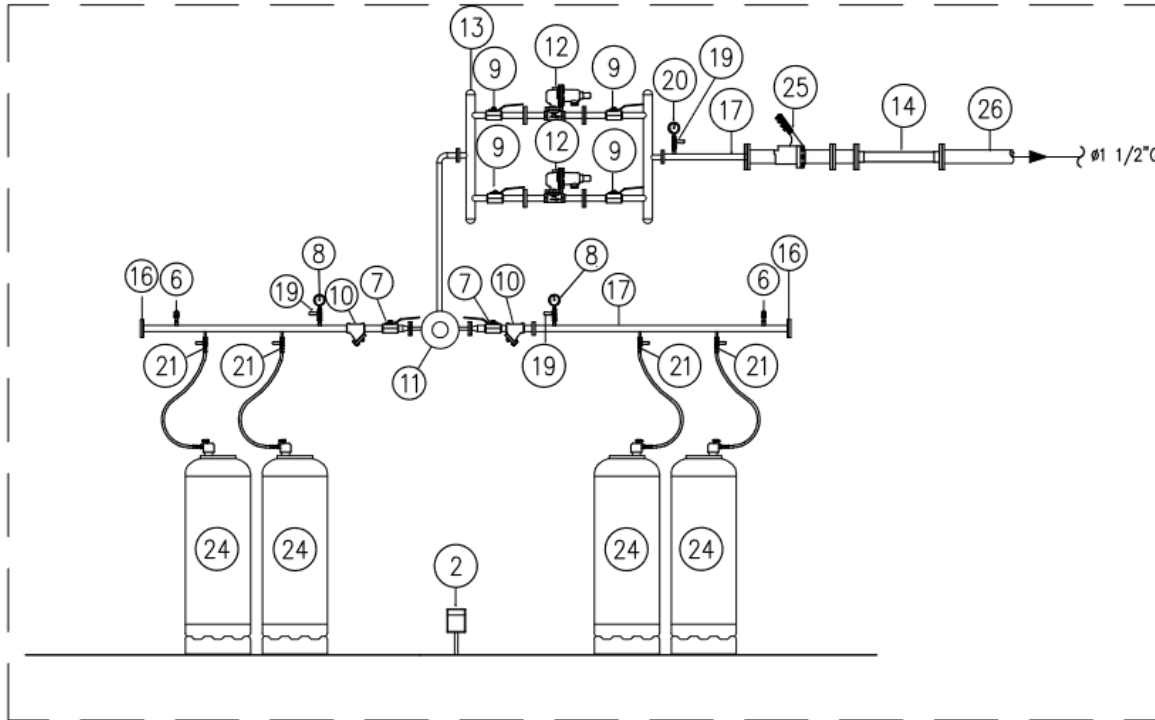


BY CONTRACTOR



EQUIPMENT SCHEDULE

NO.	DESCRIPTION	NO.	DESCRIPTION
①	VAPORIZER ELECTRICAL TYPE 100 kg.	⑭	FLEXIBLE #1 1/4" x 50 cm.
②	GAS DETECTOR	⑮	DRAIN VALVE #1/2" 1,000 PSI
③	VAPOUR OIL TRAP	⑯	BLIND FLANGE #1 1/4" 300 PSI
④	BALL VALVE #3/4" 1000 PSI	⑰	LIQUID MANIFOLD #1 1/4" SCH.# 80 SEAMLESS
⑤	Y - STRAINER #3/4"	⑱	VAPOR MANIFOLD #1 1/4" SCH.# 40 SEAMLESS
⑥	HYDROSTATIC RELIEF VALVE # 1/4" 250 PSI	⑲	BALL VALVE #1/4" 1,000 PSI
⑦	BALL VALVE #1/4" 1,000 PSI	⑳	PRESSURE GAUGE 0-60 PSI
⑧	PRESSURE GAUGE 0-300 PSI	㉑	ROOT VALVE #1/4"
⑨	BALL VALVE #1" 1,000 PSI	㉒	LPG HOSE SINGLE PIGTAL #1/4" (VAPOUR)
⑩	Y - STRAINER #1 1/4"	㉓	LPG HOSE SINGLE PIGTAL #1/4" (LIQUID)
⑪	AUTOMATIC CHANGE OVER (LIQUID)	㉔	LPG LIQUID CYLINDER 48 KG.
⑫	HIGH PRESSURE REGULATOR #1"	㉕	EMERGENCY SHUT OFF VALVE #1 1/4"
⑬	STEEL CAP # 2"	㉖	STEEL PIPE #2" SCH.#40 SEAMLESS

