

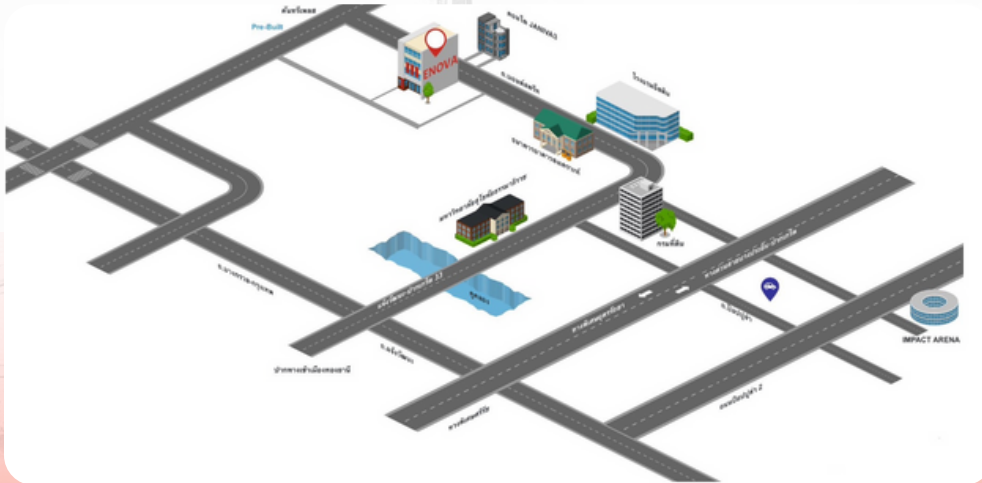
Company Profile up to Yr.2025 Construction Department

ENOVA



ABOUT US

**445 Bondstreet Road,
Bangpood, Pakret
Nonthaburi 11120 Thailand.
Office Tel +66 29610799,
+66 20604429**



www.enova.co.th



tanawat@enova.co.th

ENOVA Integration Company Limited (EIC)

EIC was established with registered capital of **40 million bath**

Our business : Engage in the business of

- 22/33kV Distribution Network
- 115kV Substation
- SCADA and Substation Control System
- 115kV Power Transmission Line

Our Customer : public and private sectors such as
Provincial Electricity Authority of Thailand (PEA)
Electricity Generating Authority of Thailand (EGAT)
Electricity Metropolitan Authority (MEA)
Port Authority of Thailand (PAT)
B.Grimm Power
RATCH Group and Navanakorn Industrial Estate, etc.

The company has personnel and teams who are knowledgeable and skilled in designing and consulting, including project management in the form of EPC to meet the needs of customers in all types of system work.

ABOUT US



FOUNDED

- E-INNOVATION ENGINEERING CO., LTD.
- Electrical Power System Integrator



ENOVA LAOS

- ENOVA REP. OFFICE
 - Expand business to Laos Market



ENOVA MYANMAR

- ENOVA CORPORATION CO., LTD. YANGON
 - Expand business to Myanmar Market



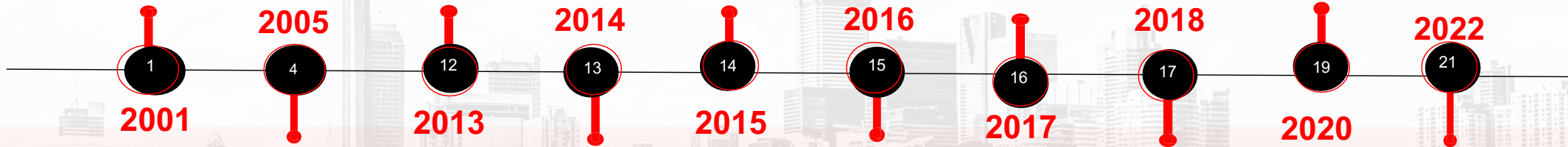
ENOVA MYAWADEE

- ENOVA GRID ENTERPRISE CO., LTD. MYAWADEE
 - Electrical Power supply from Maesot Thailand to Myawadee



BIZ STRATEGIC

- PEA INTELLIGENT TECHNOLOGY CO., LTD.
 - Enova holds 35% shares.
 - Behind Meter Biz



ENOVA INTEGR.

- ENOVA INTEGRATION CO., LTD.
 - System Integrator Remote Terminal Unit



EDL PROJECT

- POWER SYSTEM REHABILITATION PROJECT (PDSRP) FOR EDL
 - EPC and SCADA DMS Center Implementation

ENOVA SINGAPORE

- ENOVA GRID SINGAPORE
 - HUB office to ASEAN Region



ENOVA ENG.

- ENOVA ENG. & SERVICES CO., LTD.
 - Total Energy Services and Renewable Energy



DIGITAL ENERGY

- Renewable Energy
 - Smart Energy
 - Behind meter Business
 - Energy Trading Platform





22/33kV Distribution Network Underground and Overhead Project

Construction and improvement of distribution system of development 4 province in LAO PDR (PDSR Project)



- Rehabilitation 22kV and Substation Control system for Vientiane Capital, Thakhek City, Savannakhet City, Pakse City
 - 400 Set Load Break Switch 22kV
 - 180 Set Automatic Recloser 22kV
 - Maintenance 22kV Transformer
 - DMS for Vientiane Capital and 15 Head Center branch of SCADA control for 3 Province (THK,SVK,PAK)
 - Switching Substation 22kV
 - 100km. 22kV Distribution Construction

Finish : 2016

Contract : 50 Million USD

Customer : Electricite Du Laos (EDL)





22kV Distribution Network Kampong Saprué Project

- 22kV Distribution network construction with underground solution (Semi direct burial) 1.5 km.-circuit
 - Installation 22kV Power Transformer
 - Installation 22kV and 0.4kV underground system
 - Construction duct bank and cable trench
- Finish : 2019**
Contract : 0.35 Million USD (12 Million THB)
• Turnkey EPC (Main Contractor)

Customer : Provincial Electricity Authority of Thailand (PEA)



22kV Distribution Network Project RATCH Cogeneration

- 22kV Distribution network construction with underground solution (Horizontal Directional Drill, HDD) 2.8 km.-circuit
 - 22kV Ring Main Unit Installation
 - 22kV Power cable
 - Test and Commissioning
 - Turnkey EPC (Main Contractor)

Finish : 2020

Contract : 1.5 Million USD (46 Million THB)

Customer: RATCH Cogeneration (RCO)



22kV Distribution Network Project NNEG

- 22kV Distribution network construction with overhead and underground solution 6-7 km.-circuit
 - 22kV Industry Unit Tie in 8 Factory
 - 22kV Metering HT.
 - Test and Commissioning
 - Turnkey EPC (Main Contractor)

Finish : 2020

Contract : 2.5 Million USD (80 Million THB)

Customer: Nava Nakorn Electricity of Generation (NNEG)



2kV Distribution Network Project GLOW SPP11

- 22kV Distribution network construction with overhead and underground solution 1 km.- circuit Qty 2 Circuit
 - 22kV Industry Unit Tie in 1 Factory
 - Installation LBS 22kV :2 Set
 - Installation Ring Main Unit: 1 Set
 - Test and Commissioning
 - Turnkey EPC (Main Contractor)

Finish : 2022

Contract : 0.25 Million USD (8 Million THB)

Customer : Glow SPP11 (GPSC)



RCO-TUH (THAMMASART HOSPITAL)

- 22kV Distribution network construction and underground solution 3 km.-circuit Qty 2 Circuit
 - 22kV Industry Unit Tie in 3 Building
 - Expansion 115kV Transformer 50MVA 1 Bay
 - Installation Compact Unit Substation: 5 Set
 - Installation Modular Switchgear (Containerized) 1 Set
 - Test and Commissioning
 - Turnkey EPC (Main Contractor)

Finish : 2023

Contract : 12.35 Million USD (420 Million THB)

Customer : RATCH cogeneration (RATCH)



RATCH
Cogeneration



33kV Distribution Network Project Ranong Province Underground PEA Phase 2

- 33kV Distribution network construction and underground solution 1.4 km.-circuit Qty 2 Circuit
 - 33kV underground Construction into Ruengraj Road
 - Installation Compact Unit Substation: 3 Set
 - Installation 33kV and 0.4kV System and Riser, Service Line
 - Test and Commissioning
 - Turnkey EPC (Main Contractor)

Finish : 2024

Contract : 3.17 Million USD (104.49 Million THB)
C.CST.003/2566

Customer : Provincial Electricity Authority of Thailand (PEA) and Ranong Municipality



PEA
PROVINCIAL ELECTRICITY AUTHORITY



22kV Distribution Network Project Unit Substation PP25 Project Terminal supply to Drilling Purple MRT Line

- 22kV Distribution network construction unit substation for UNIQUE
 - Installation Ring Main Unit : 1 Set
 - Installation 22kV Power Transformer 2500kVA 2 Set
 - Installation Riser 2 Set
 - Test and Commissioning
 - Turnkey EPC (Main Contractor)

Finish : 2024

Contract : 0.25 Million USD (7.7 Million THB)

Customer : UNIQUE ENGINEERING AND CONSTRUCTION PUBLIC COMPANY LIMITED (UNIQUE)





115kV Transmission Line Underground and Overhead Project

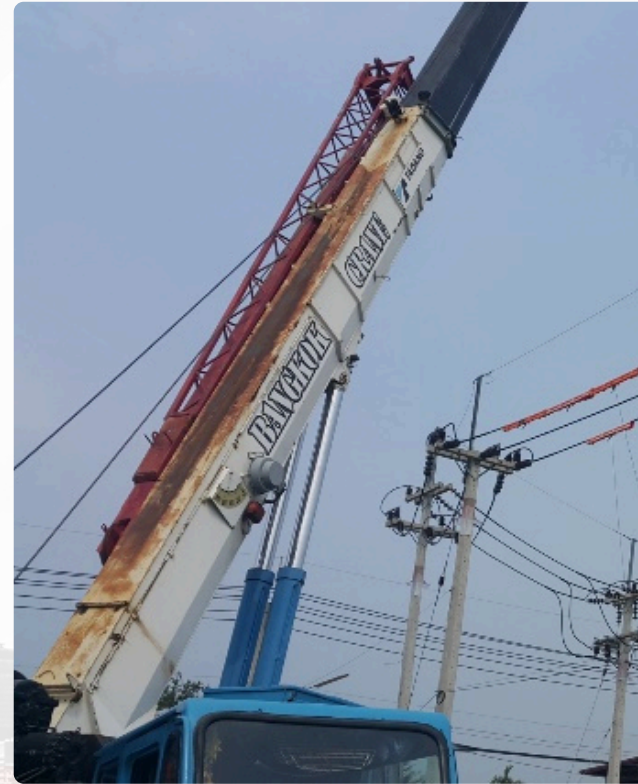
115kV Transmission Line Project RCO-NSTDA (National Science and Technology Development Agency)

- 115kV Transmission construction with Double Circuit By Overhead circuit 1 km. and Underground 200m.
 - Installation 115kV Transmission Line Type DS type
 - Installation Underground 115kV Riser 6 Set
 - Installation Tower Lattice 2 Pole
 - Expansion and Modify 115kV Substation Bay Cap to Bay Line
 - Test and Commissioning
 - Turnkey EPC (Main Contractor)

Finish : 2021

Contract : 1.6 Million USD (52.2 Million THB)

Customer : RATCH cogeneration (RATCH)



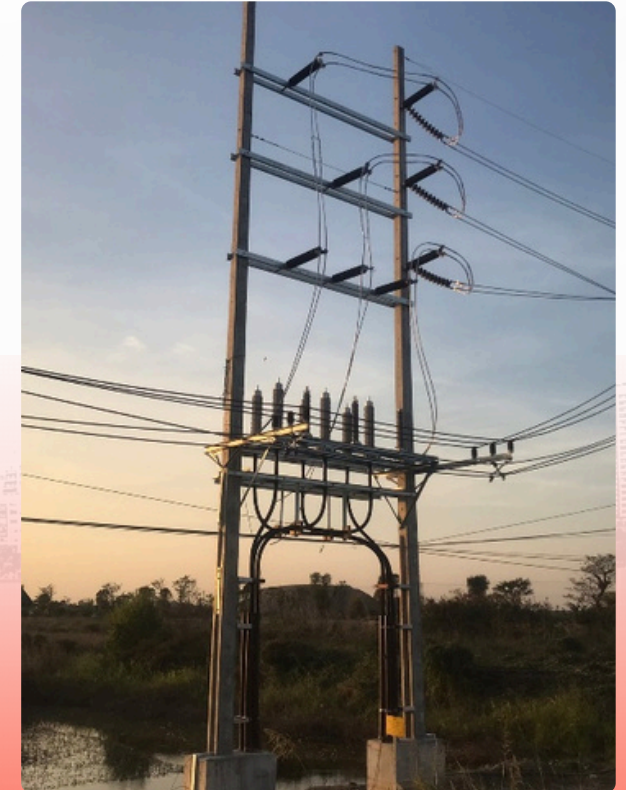
115kV Transmission Line Project Underground Riser Rojana Cross the road Highway AH.1

- 115kV Transmission construction with Double Circuit By Underground HDD and Riser Cross the road AH.1
 - Installation 115kV Transmission Line Type DD type
 - Installation Underground 115kV Riser 4 Set
 - Installation Underground by HDD solution
 - Test and Commissioning
 - Turnkey EPC (Main Contractor)

Finish : 2022

Contract : 0.58 Million USD (19 Million THB)

Customer : Provincial Electricity Authority of Thailand (PEA)



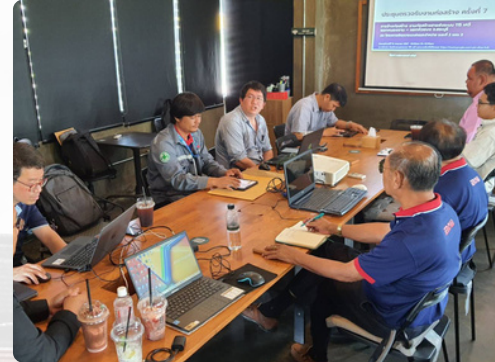
115kV Transmission Line Project Houyong Saraburi

- 115kV Transmission construction with Double Circuit By Overhead and Underground 16 km.-Circuit
 - Installation 115kV Transmission Line Type SD type
 - Installation Underground 115kV Riser 4 Set
 - Installation Underground by HDD solution
 - Installation Tower Lattice 4 Pole
 - Test and Commissioning
 - Turnkey EPC (Main Contractor)

Finish : 2024

Contract : 1.68 Million USD (55 Million THB)

Customer : Provincial Electricity Authority of Thailand (PEA)



115kV Transmission Line Project Aumnaj-jaruen Province

- 115kV Transmission construction with Single Circuit By Overhead 33 km.-Circuit
 - Installation 115kV Transmission Line Type SD type
 - Installation Monopole 22m. 2 Pole
 - Installation 115kV Load Break Switch 1 Set
 - Test and Commissioning
 - Turnkey EPC (Main Contractor)

Finish : Q1-2025

Contract : 2.03 Million USD (67 Million THB)

Customer : Provincial Electricity Authority of Thailand (PEA)



115kV Substation Project





115kV Substation Bountarik 25MVA 2 Set

- 115kV Substation AIS Type
- Configuration MTS H-Config.
 - Installation 115kV MTS and Electrical Compartment
 - Installation 115kV Power transformer 25 MVA 2 Set
 - Construction control building
 - Preparation and civil work scope
 - Test and Commissioning
 - Partial EPC (Sub-contractor)
 - Turnkey control building and civil scope
 - Exclude procurement electrical part

Finish : 2022

Contract : 1.3 Million USD (43 Million THB)

Customer : SCI Electric Public Company (SCI)





230-115kV Expansion Bay for EGAT Substation

- 230-115kV Expansion Bay installation EGAT Format
- Wangnoi SS, Nongkai SS, Ranong, Ranod, Bandon, Nakornsawan SS
 - Installation 115-230kV Equipment
 - Installation control and low voltage cable
 - Test and Commissioning
 - Turnkey EPC (Main Contractor)

Finish : 2021

Contract : All contact 0.36 Million USD
(12 Million THB)

Customer : Electricity Generating Authority of Thailand (EGAT)



115kV Substation REN Korat Energy 50MVA 2 Set

- 115kV Substation AIS Type
- Configuration Main and Transfer Bus : 1LB,2TRB,1MTB and 115kV Transmission Line Internal Plant
 - Installation 115kV Electrical Equipment
 - Installation 115kV Power transformer 50 MVA 2 Set
 - Construction control building
 - Preparation and civil work scope
 - 22kV AIS Switchgear
 - Tele-protection and inter-trip
 - Firefighting and fire alarm
 - SCPS for control substation (IEC 61850 Topology 1)
 - Test and Commissioning
 - Turnkey EPC (Main contractor)

Finish : 2023

Contract : 5.77 Million USD (190.5 Million THB)

Customer : PEA ENCOM (Stockholder of REN)



115kV Substation Rehabilitation of Equipment for Thatungna-Dam

- 115kV Substation AIS Type
 - Installation 115kV Disconnecting Switch
 - Installation control and low voltage cable
 - Installation control panel
 - Test and Commissioning
 - Turnkey EPC (Main Contractor)

Finish : 2023

Contract : 0.54 Million USD (15 Million THB)

Customer : Electricity Generating Authority of Thailand (EGAT)





115kV MTS Split Main Bus RCO Power Plant



- 115kV MTS Hybrid Switchgear
 - Installation 115kV MTS and Split Main bus work
 - Installation control and low voltage cable
 - Installation relay control panel
 - Test and Commissioning
 - Turnkey EPC (Main Contractor)

Finish : 2024

Contract : 1.1 Million USD (37 Million THB)

Customer : RATCH cogeneration (RATCH)



115kV Substation Chiangrai 3, 50MVA 1 Set

- 115kV Substation AIS Type
- Configuration MTS H-Config
- Installation 115kV Electrical Equipment
- Installation 115kV Power transformer 50 MVA 1 Set
- Construction control building
- Preparation and civil work scope
- 22kV AIS Switchgear
- Pipe Jacking 22kV Approach Riser
- SCPS for control substation (IEC 61850 Topology 1)
- Test and Commissioning
- Turnkey EPC (Main contractor)

Finish : Q1-2025 (On Porcess)

Contract : 4.75 Million USD (158 Million THB)

Customer : Provincial Electricity Authority of Thailand (PEA)



THANKYOU FOR YOUR
ENOVA ATTENTION