

**SUN2000-(3KTL-10KTL)-M1**

# **Quick Guide**

**Issue: 05**

**Part Number: 31500FKA**

**Date: 2023-11-10**

**HUAWEI TECHNOLOGIES CO., LTD.**



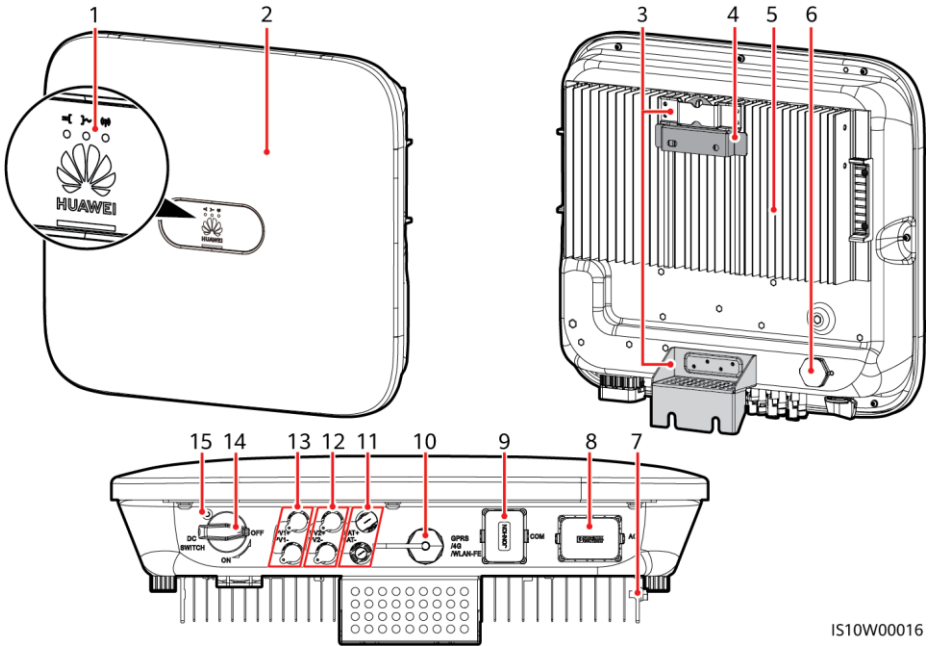
**HUAWEI**

## NOTICE



1. The information in this document is subject to change due to version upgrades or other reasons. Every effort has been made in the preparation of this document to ensure accuracy of the contents, but all statements, information, and recommendations in this document do not constitute a warranty of any kind, express or implied. You can download this document by scanning the QR code.
2. Before installing the device, read the user manual carefully to get familiar with product information and safety precautions.
3. Only qualified and trained electrical technicians are allowed to operate the device. Operation personnel should understand the composition and working principles of the grid-tied PV power system and local regulations.
4. Before installing the device, check that the package contents are intact and complete against the packing list. If any damage is found or any component is missing, contact your dealer.
5. Use insulating tools when installing the device. For personal safety, wear proper personal protective equipment (PPE).
6. Huawei shall not be liable for any consequences caused by the violation of the storage, transportation, installation, and operation regulations specified in this document and the user manual.

# 1 Product Description



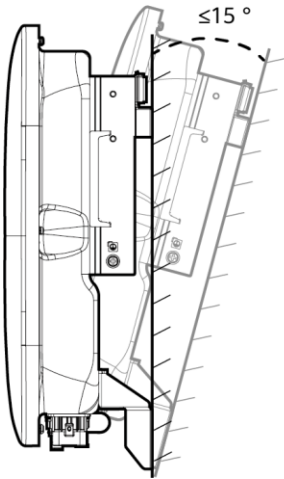
IS10W00016

- |                                     |  |
|-------------------------------------|--|
| (1) LED                             | (2) Front panel                          |
| (3) Hanging kit                     | (4) Mounting bracket                     |
| (5) Heat sink                       | (6) Ventilation valve                    |
| (7) Ground screw                    | (8) AC output port (AC)                  |
| (9) Communication port (COM)        | (10) Smart Dongle port (GPRS/4G/WLAN-FE) |
| (11) Battery terminals (BAT+/BAT-)  | (12) DC input terminals (PV2+/PV2-)      |
| (13) DC input terminals (PV1+/PV1-) | (14) DC switch (DC SWITCH)               |
| (15) Screw hole for the DC switch   |  |

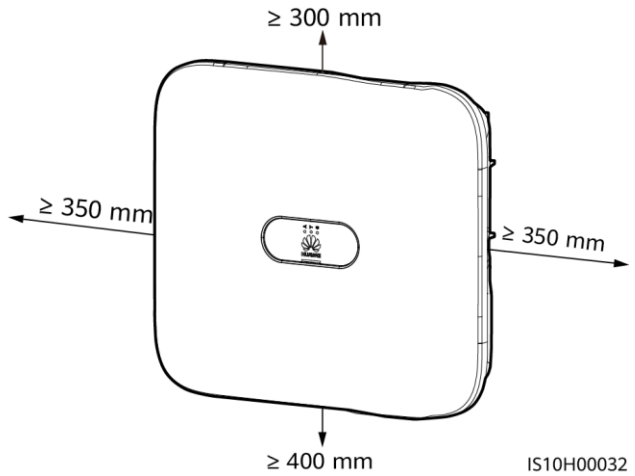
## 2 Installing the Equipment

### 2.1 Installation Requirements

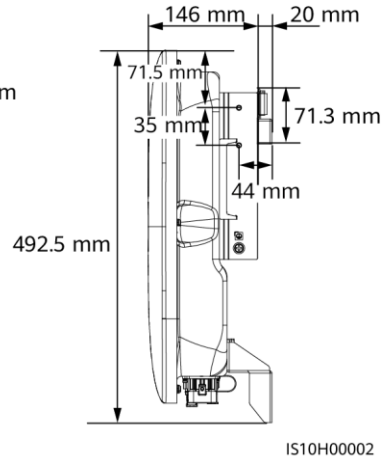
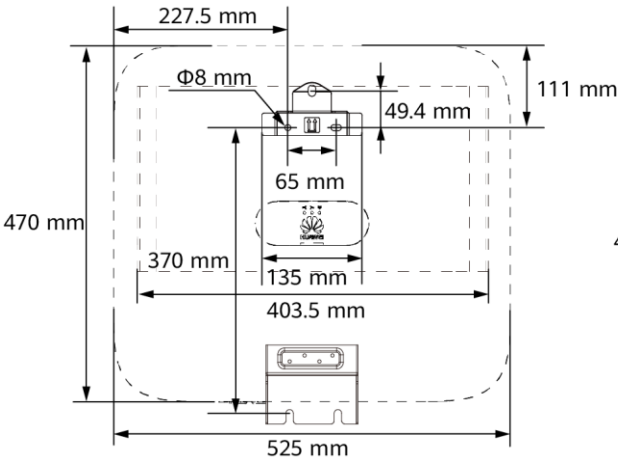
#### Angle



#### Space



#### Dimensions



#### NOTE

Two M6 screw holes are reserved on both left and right sides of the inverter for installing an awning.

### 2.2 Installing the Inverter

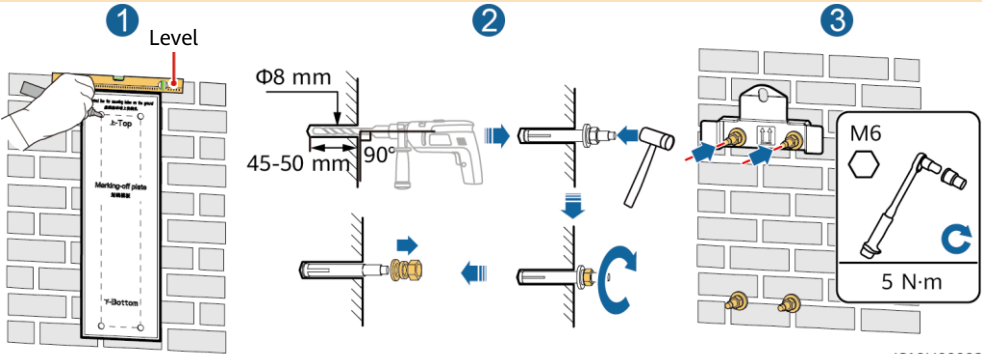
#### DANGER

When drilling holes, avoid the water pipes and power cables buried in the wall.

## 1. Install the mounting bracket.

### NOTE

- M6x60 expansion bolts are delivered with the inverter. If the length and number of the bolts do not meet installation requirements, prepare M6 stainless steel expansion bolts by yourself.
- The expansion bolts delivered with the inverter are used for solid concrete walls. For other types of walls, prepare bolts by yourself and ensure that the wall meets the load bearing requirements of the inverter.
- Loosen the nuts, flat washers, and spring washers of the two expansion bolts.

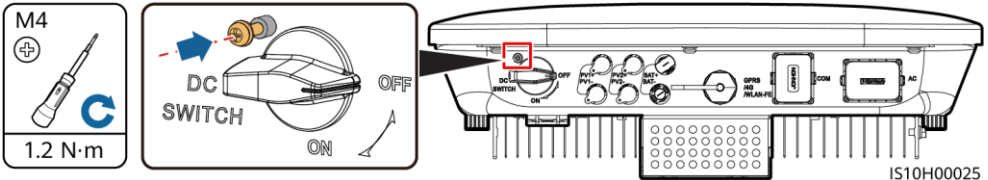


IS10H00003

## 2. (Optional) Install the screw for locking the DC switch.

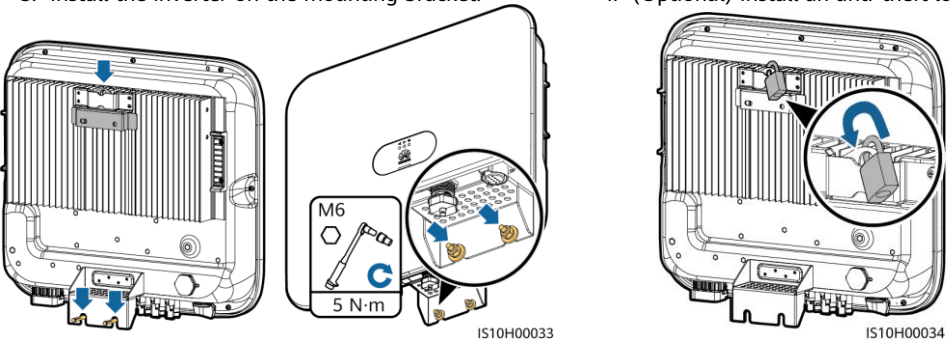
### NOTE

- The screws for DC switches are delivered with solar inverters. According to Australian standards, the screws are used to secure DC switches (DC SWITCH) to prevent them from being turned on by mistake.
- For the model used in Australia, perform this step to meet the local standards.



## 3. Install the inverter on the mounting bracket.

## 4. (Optional) Install an anti-theft lock.



### NOTE

Prepare an anti-theft lock suitable for the lock hole diameter ( $\Phi 8$  mm) and ensure that the lock can be installed successfully. An outdoor waterproof lock is recommended.

# 3 Electrical Connections

## 3.1 Preparing for Installation

### ⚠ WARNING

- Do not connect loads between the inverter and the AC switch that directly connects to the inverter. Otherwise, the switch may trip by mistake.
- If an AC switch is used with specifications beyond local standards, regulations, or Huawei's recommendations, the switch may fail to turn off in a timely manner in case of exceptions, causing serious faults.

### ⚠ CAUTION

Each inverter must be equipped with an AC output switch. Multiple inverters cannot connect to the same AC output switch.

### NOTICE

- To ensure that the inverter can be safely disconnected from the power grid when an exception occurs, connect an AC switch to the AC side of the inverter. Select an appropriate AC switch in accordance with local industry standards and regulations.
- Cable specifications must meet the requirements in local standards. Electrical connections must meet the requirements in the relevant regulations of the country or region.
- Before connecting cables, ensure that the DC SWITCH on the inverter and all the switches connected to the inverter are set to OFF. Otherwise, the high voltage of the inverter may result in electric shocks.

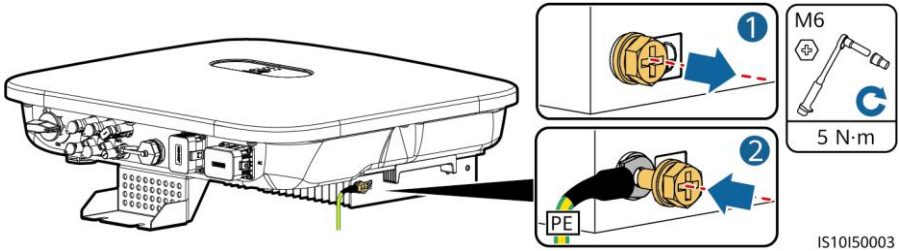
| No. | Item   | Type   | Specifications  |
|-----|--|--|---|
| 1   | PE cable   | Single-core outdoor copper cable                                     | Conductor cross-sectional area $\geq 4 \text{ mm}^2$  |
| 2   | AC output power cable  | Outdoor copper cable   | <ul style="list-style-type: none"><li>• Conductor cross-sectional area: 4–6 <math>\text{mm}^2</math></li><li>• Cable outer diameter: 10–21 mm</li></ul>   |
| 3   | DC input power cable and (optional) battery cable  | Standard outdoor PV cable in the industry (recommended model: PV1-F) | <ul style="list-style-type: none"><li>• Conductor cross-sectional area: 4–6 <math>\text{mm}^2</math></li><li>• Cable outer diameter: 5.5–9 mm</li></ul>   |
| 4   | (Optional) RS485 communications cable (used to cascade inverters or connect to the RS485 signal port on the SmartLogger)                                 | Two-core outdoor shielded twisted pair cable                         | <ul style="list-style-type: none"><li>• Conductor cross-sectional area: 0.2–1 <math>\text{mm}^2</math></li><li>• Cable outer diameter: 4–11 mm</li></ul> <p>Note: When devices such as the Smart Power Sensor and the energy storage device are both connected to the inverter, use 0.2–0.5 <math>\text{mm}^2</math> cords.</p> |
| 5   | (Optional) RS485 communications cable (used to connect to the RS485 signal port on devices such as the Smart Power Sensor and the energy storage device) |  |   |
| 6   | (Optional) Rapid shutdown switch signal cable  |  |   |
| 7   | (Optional) Grid scheduling signal cable  |  |   |
| 8   | (Optional) Grid scheduling signal cable  |  |   |
|     |  | Five-core outdoor cable  |   |

| No. | Item      | Type  | Specifications   |
|-----|-----------|---|--|
| 9   | AC switch | Recommended: three-phase AC circuit breaker | Rated voltage $\geq 380$ V AC<br>Rated current:<br><ul style="list-style-type: none"> <li>16 A (3KTL-6KTL)</li> <li>25 A (8KTL-10KTL)</li> </ul> |

### 3.2 Installing the PE Cable

#### **⚠ DANGER**

Do not connect the neutral wire to the enclosure as a PE cable. Otherwise, electric shocks may occur.



#### **📖 NOTE**

- The PE point at the AC output port is used only as a PE equipotential point, and cannot substitute for the PE point on the enclosure.
- It is recommended that silica gel or paint be used around the ground terminal after the PE cable is connected.

### 3.3 Installing the AC Output Power Cable

#### **NOTICE**

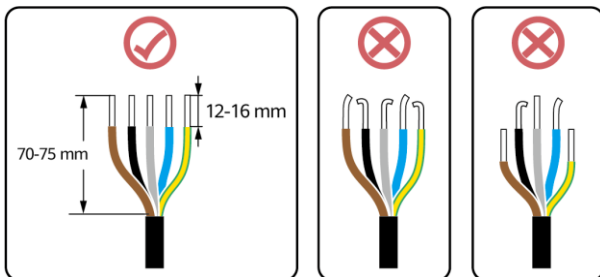
Ensure that the protection layer of the AC output power cable is inside the connector, the core wires are totally inserted into the cable hole, and the cable is connected securely. Failing to do so may cause device malfunction or damage.

#### **📖 NOTE**

Strip the insulation layers of the AC output power cable by the recommended length (12-16 mm) to ensure that the cable conductors are completely inside the conductor insertion points and no insulation layer is pressed into the conductor insertion points. Otherwise, the device may fail to run properly or be damaged during operation.

1. Connect the AC output power cable to the AC connector.

#### **Stripping Requirements**

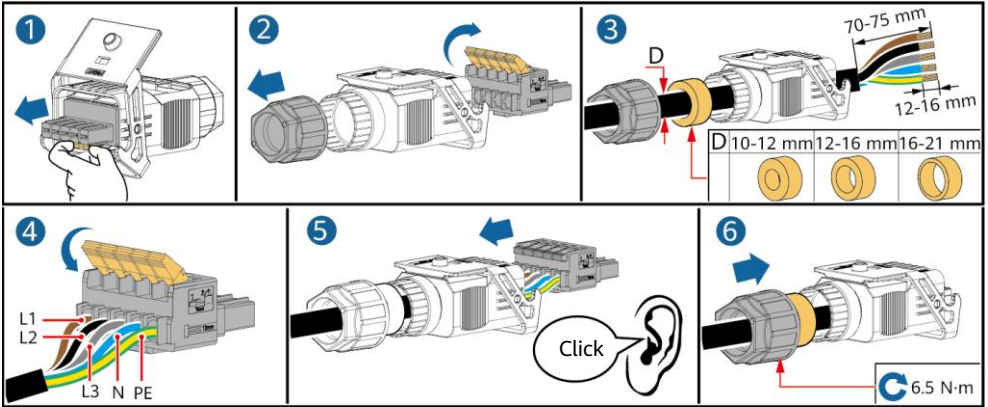


IS06120048

## Five-Core Cable (L1, L2, L3, N, and PE)

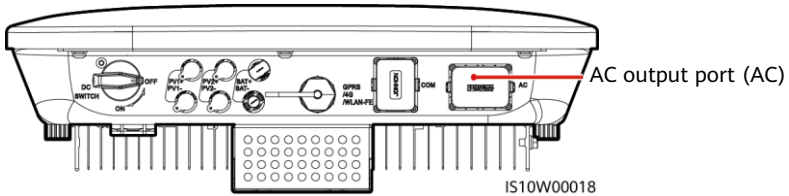
### NOTE

- This section describes how to connect a five-core AC output power cable to an AC connector.
- A three-core AC output power cable can be connected similarly. The three-core cable (L1, L2, and L3) is not connected to the neutral wire or PE wire.
- A four-core or five-core AC output power cable can be connected similarly. The four-core cable (L1, L2, L3, and PE) is not connected to the N wire, and the four-core cable (L1, L2, L3, and N) is not connected to the PE wire.

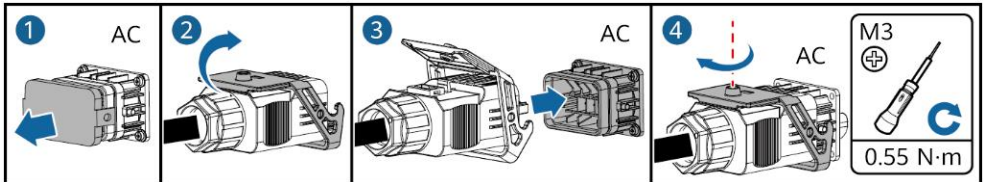


IS10I20001

2. Connect the AC connector to the AC output port.

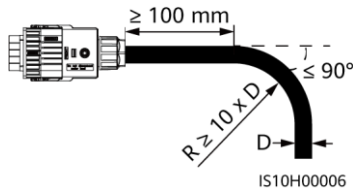


IS10W00018



IS10I20005

3. Check the route of the AC output power cable.



IS10H00006

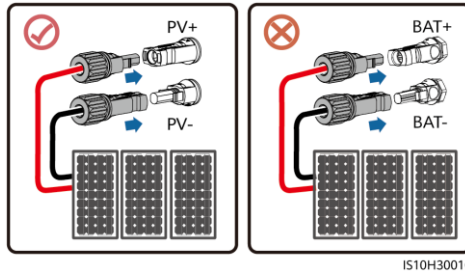
## 3.4 Installing the DC Input Power Cable

### NOTICE

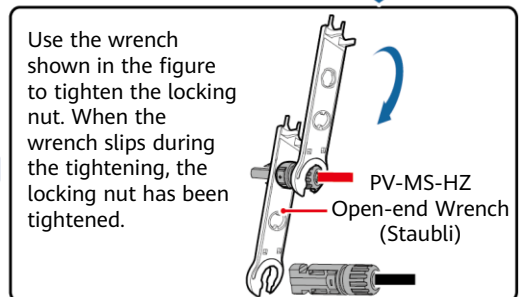
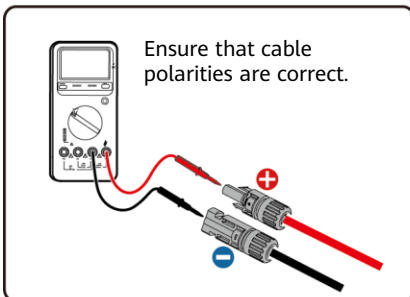
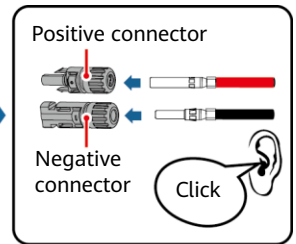
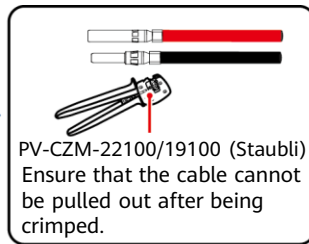
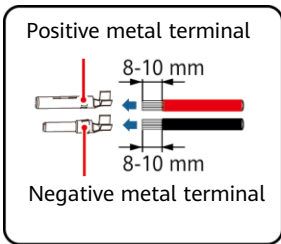
1. Ensure that the PV module output is well insulated to ground.
2. Use the Staubli MC4 positive and negative metal terminals and DC connectors supplied with the solar inverter. Using incompatible positive and negative metal terminals and DC connectors may result in serious consequences. The caused device damage is not covered under warranty.
3. The DC input voltage of the SUN2000 shall not exceed 1100 V DC under any circumstance.
4. Before installing the DC input power cable, label the cable polarities to ensure correct cable connections.
5. If the DC input power cable is reversely connected, do not operate the DC switch as well as positive and negative connectors immediately. Failing to do so may cause device damage, which is not covered under any warranty. Wait until the night when solar irradiance declines and the PV string current drops to below 0.5 A. Then set the DC switch to the OFF position, remove the positive and negative connectors, and correct the polarities of the DC input power cable.
6. If the PV strings are configured with Smart PV Optimizers, refer to the Smart PV Optimizer Quick Guide to check the cable polarity.

1. Assemble DC connectors.

### Correct Wiring Terminals



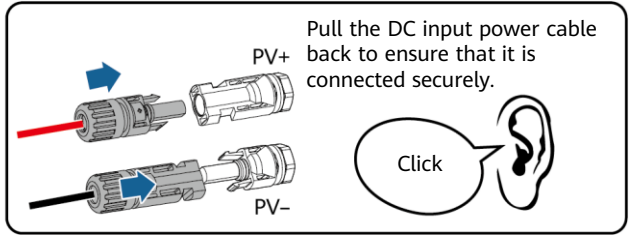
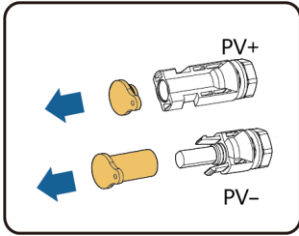
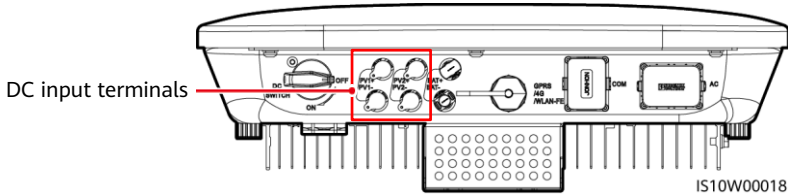
I510H30010



IH07130001



2. Connect DC input power cables.



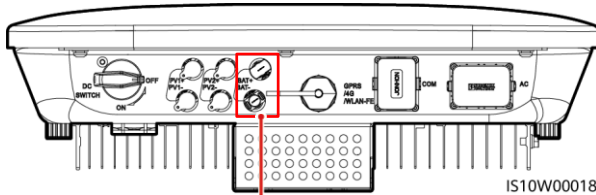
IH07130002

### 3.5 (Optional) Installing Battery Cables

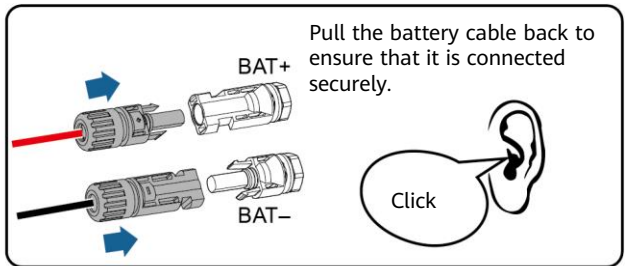
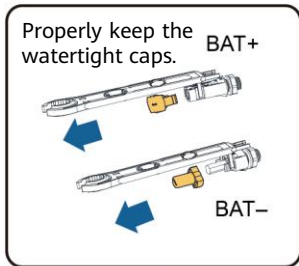
**⚠ DANGER**

- Use insulated tools when connecting cables.
- Connect battery cables with correct polarity. If battery cables are reversely connected, the solar inverter may be damaged.

Assemble the positive and negative connectors by following the instructions in section 3.4 "Installing DC Input Power Cables."



Battery terminals (BAT+/BAT-)



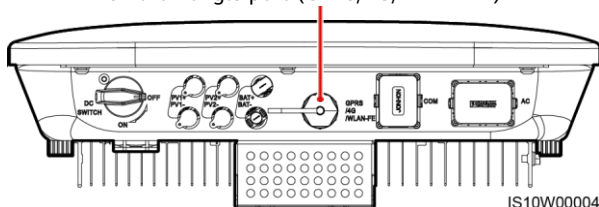
IH07130003

## 3.6 Installing the Smart Dongle

### NOTE

- If FE communication is used, install a WLAN-FE Smart Dongle (SDongleA-05). The WLAN-FE Smart Dongle is delivered with the SUN2000.
- If 4G communication is used, install a 4G Smart Dongle (SDongleA-03). You need to purchase the 4G Smart Dongle by yourself.

Smart Dongle port (GPRS/4G/WLAN-FE)



### NOTE

- For details about how to operate the WLAN-FE Smart Dongle SDongleA-05, see *SDongleA-05 Smart Dongle Quick Guide (WLAN-FE)*.
- For details about how to operate the 4G Smart Dongle SDongleA-03, see *SDongleA-03 Quick Guide (4G)*.
- The quick guide is delivered with the Smart Dongle. You can download them by scanning the QR code below.



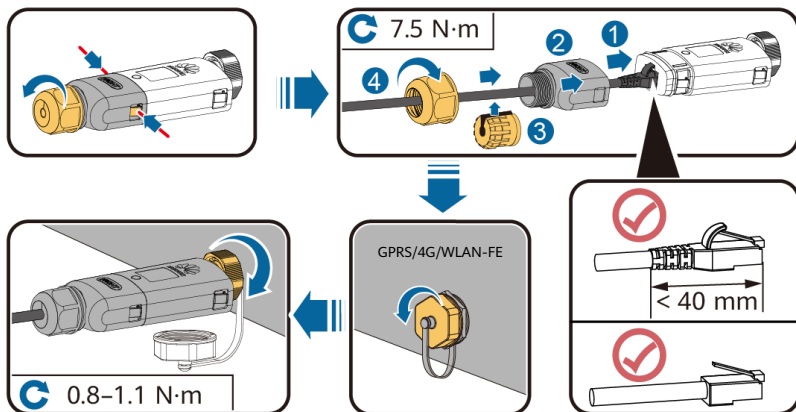
WLAN-FE



4G

### WLAN-FE Smart Dongle (FE Communication)

You are advised to use a CAT 5E outdoor shielded network cable (outer diameter < 9 mm; internal resistance  $\leq 1.5 \Omega/10 \text{ m}$ ) and shielded RJ45 connectors.

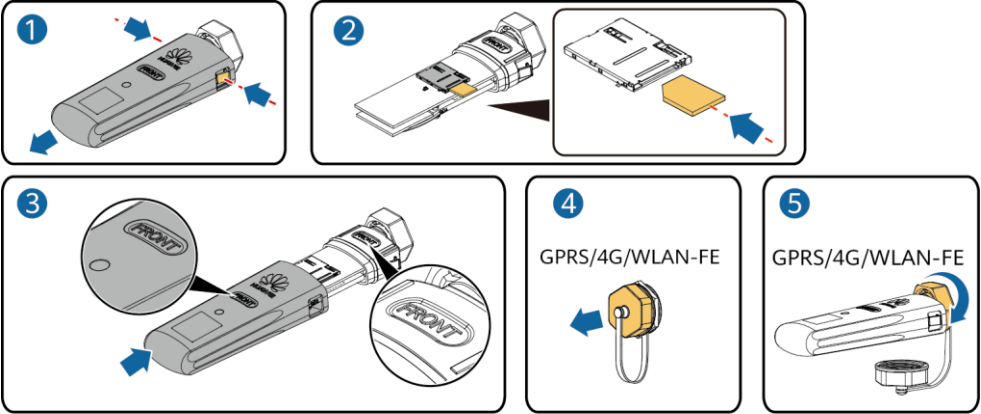


ILO4H00004

## (Optional) 4G Smart Dongle (4G Communication)

### NOTICE

- If your Smart Dongle is not equipped with a SIM card, prepare a standard SIM card (size: 25 mm x 15 mm) with the capacity greater than or equal to 64 KB.
- Install the SIM card in the arrow direction.
- When reinstalling the cover of the Smart Dongle, ensure that the buckle springs back in place (you can hear a click).



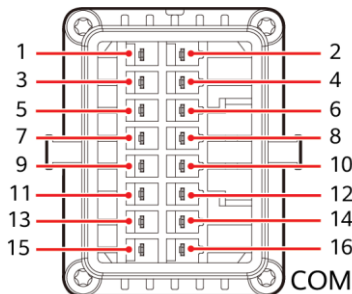
IS10H00016

## 3.7 (Optional) Installing the Signal Cable

### NOTICE

- Not all inverter models are delivered with the signal cable connector.
- When laying out the signal cable, separate it from the power cable and keep it away from strong interference sources to avoid strong communication interference.
- Ensure that the protection layer of the cable is inside the connector, surplus core wires are cut off from the protection layer, the exposed core wire is totally inserted into the cable hole, and that the cable is connected securely.
- If the Smart Dongle is configured, you are advised to install the Smart Dongle before connecting the signal cable.

## Communications Port Pin Definition



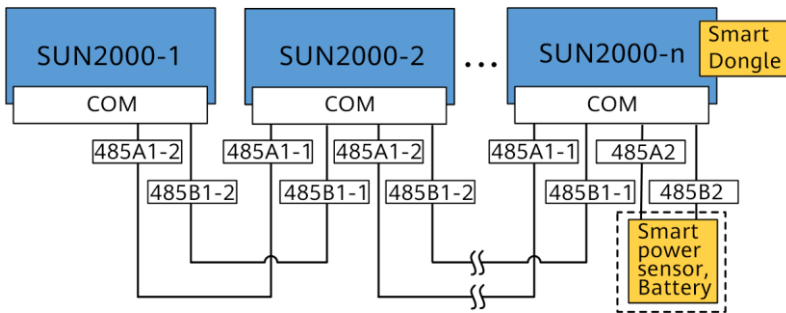
IS10W00002

**NOTE**

- When the RS485 communications cables of devices such as the Smart Power Sensor and the energy storage device are both connected to the inverter, 485A2 (pin 7), 485B2 (pin 9), and PE (pin 5) are shared.
- When the enable signal cable of the energy storage device and the signal cable of the rapid shutdown switch are both connected to the inverter, GND (pin 13) is shared.

| Pin | Definition | Function                           | Description  | Pin | Definition | Function                           | Description   |
|-----|------------|------------------------------------|--|-----|------------|------------------------------------|---|
| 1   | 485A1-1    | RS485A, RS485 differential signal+ | Used to cascade inverters or connect to the RS485 signal port on the SmartLogger                                   | 2   | 485A1-2    | RS485A, RS485 differential signal+ | Used to cascade inverters or connect to the RS485 signal port on the SmartLogger                                  |
| 3   | 485B1-1    | RS485B, RS485 differential signal- |  | 4   | 485B1-2    | RS485B, RS485 differential signal- |   |
| 5   | PE         | Shielding ground                   | N/A  | 6   | PE         | Shielding ground                   | N/A   |
| 7   | 485A2      | RS485A, RS485 differential signal+ | Used to connect to the RS485 signal port on devices such as the Smart Power Sensor and the energy storage device   | 8   | DIN1       | Digital input signal 1+            | Used to connect to dry contacts for grid scheduling or serve as a port for the feedback signal of the Backup Box. |
| 9   | 485B2      | RS485B, RS485 differential signal- |  | 10  | DIN2       | Digital input signal 2+            |   |
| 11  | EN         | Enabling signal                    |  | 12  | DIN3       | Digital input signal 3+            |   |
| 13  | GND        | GND                                | Used to connect to the rapid shutdown DI signal port or serve as a port for the signal cable of the NS protection. | 14  | DIN4       | Digital input signal 4+            | Dry contact for grid scheduling   |
| 15  | DIN5       | Rapid shutdown signal+             |  | 16  | GND        | GND of DIN1/DIN2 /DIN3/DIN 4       |   |

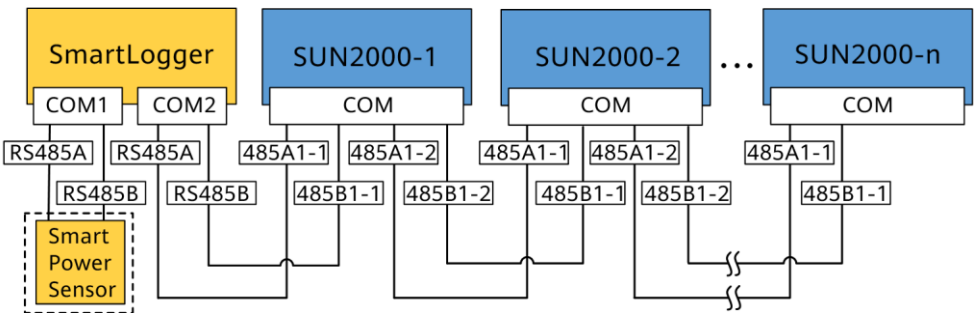
## Smart Dongle Networking Scenario



### NOTE

- In the Smart Dongle networking scenario, the SmartLogger cannot be connected.
- The Smart Power Sensor is necessary for export limitation. Select the Smart Power Sensor according to the actual project.
- A maximum of 10 devices can be connected to the WLAN-FE and 4G Smart Dongles. The Smart Power Sensors connected to the RS485A2 and RS485B2 ports are not included.
- If a battery is connected, a maximum of three inverters can be cascaded. Any one of the inverters can be connected to the battery. (The inverter connected to the Smart Dongle must be connected to the battery.)
- If the SUN2000-(3KTL-10KTL)-M1 and SUN2000-(2KTL-6KTL)-L1 are cascaded, a maximum of three inverters can be cascaded.

## SmartLogger Networking Scenario

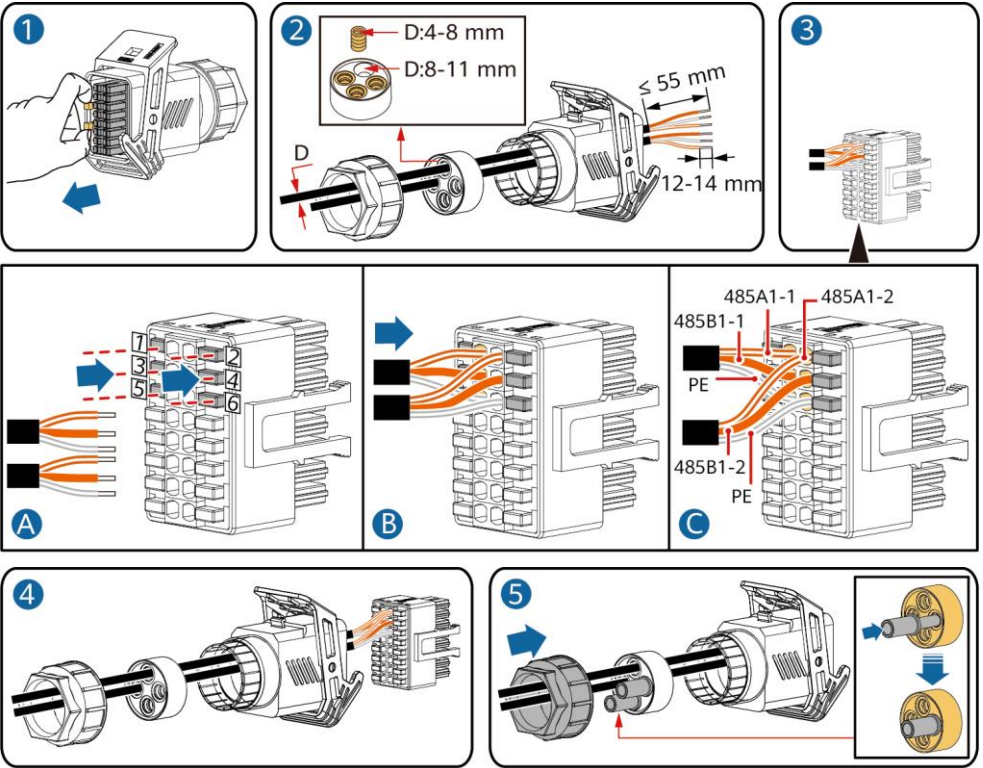


### NOTE

- In the SmartLogger networking scenario, the Smart Dongle cannot be connected.
- A maximum of 80 devices can connect to a single SmartLogger, such as inverters, Smart Power sensor, and EMI. You are advised to connect fewer than 30 devices to each RS485 route.
- The Smart Power Sensor is necessary for export limitation. Select the Smart Power Sensor according to the actual project.
- To ensure the system response speed, you can connect the Smart Power Sensor to a separate COM port.

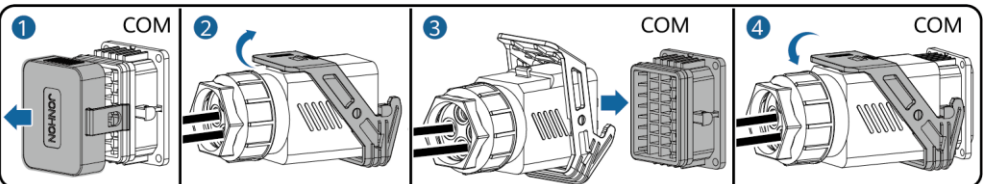
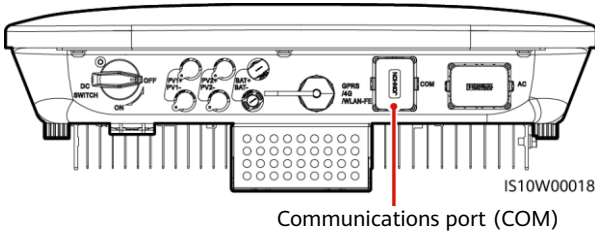
## (Optional) Installing the RS485 Communications Cable (Inverter Cascading)

1. Connect the signal cable to the signal cable connector.



IS10I20006

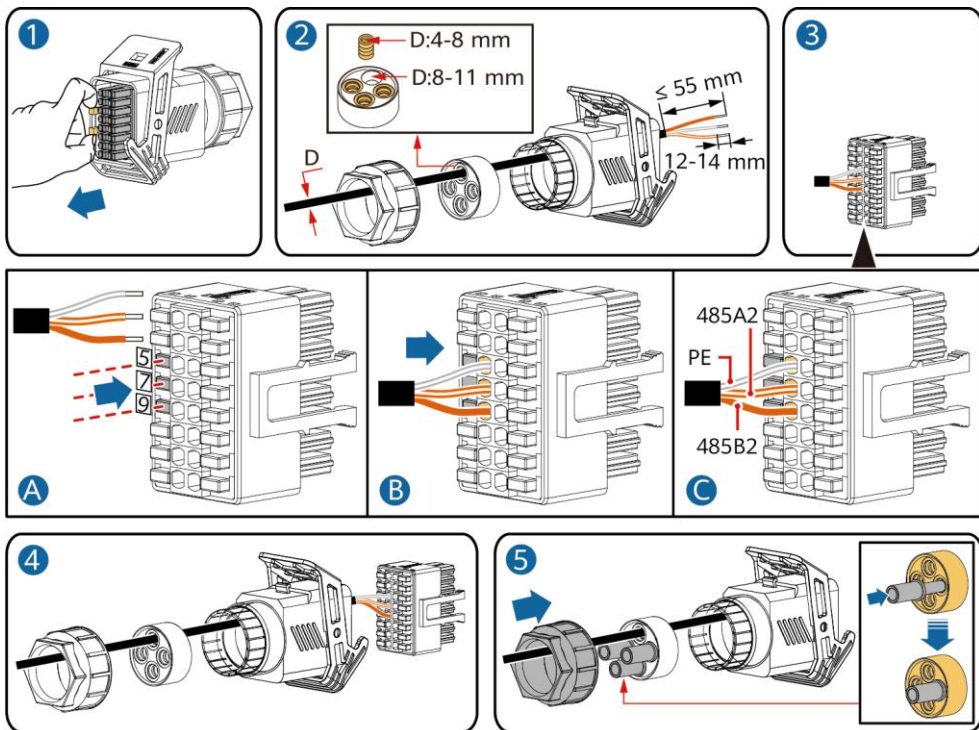
2. Connect the signal cable connector to the communication port.



IS10I20007

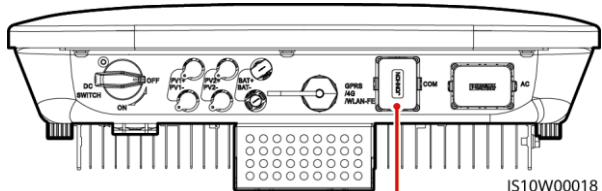
## (Optional) Installing the RS485 Communications Cable (Only Smart Power Sensor Connected)

1. Connect the signal cable to the signal cable connector.

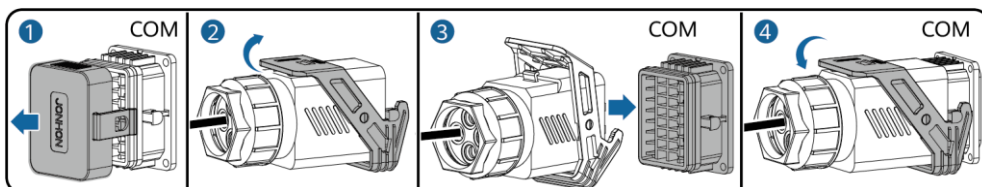


IS10I20008

2. Connect the signal cable connector to the communication port.



Communications port (COM)

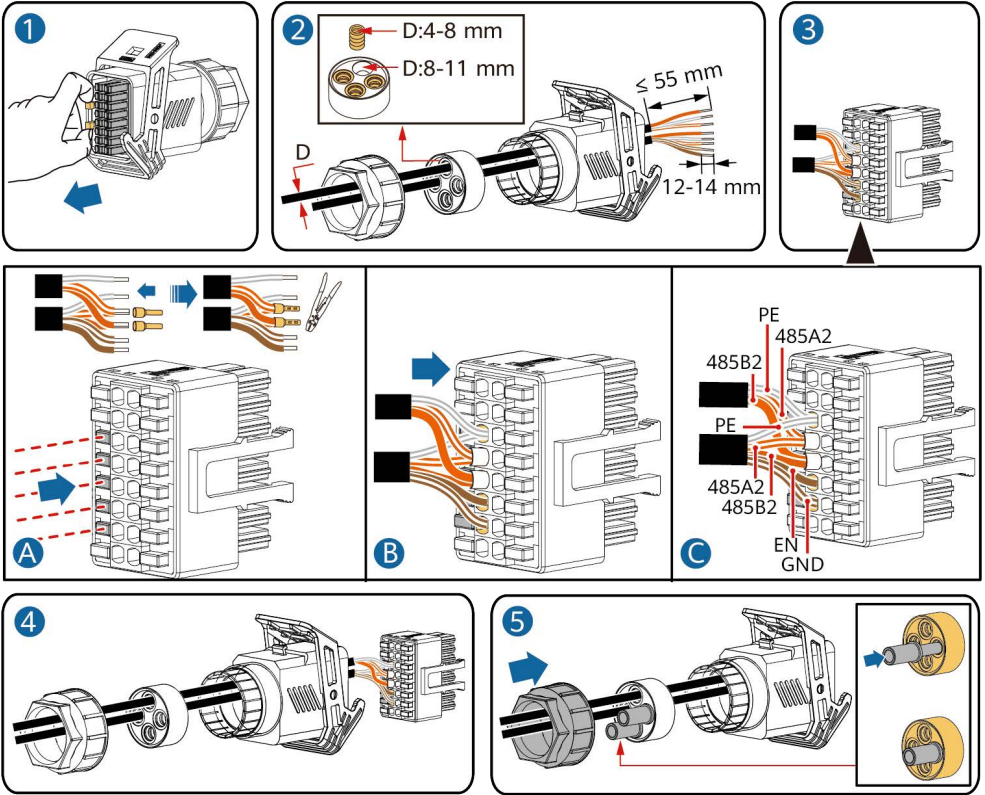


IS10I20007



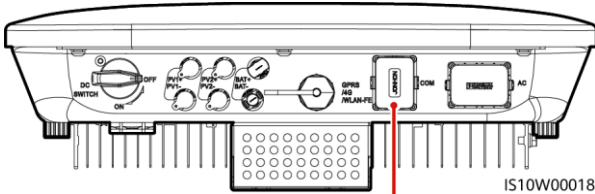
**(Optional) Installing the RS485 Communications Cable (Smart Power Sensor and Energy Storage Device Connected)**

1. Connect the signal cable to the signal cable connector.



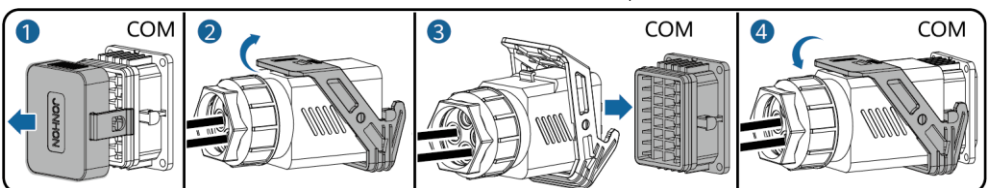
IS10I20012

2. Connect the signal cable connector to the Communication port.



IS10W00018

Communications port (COM)

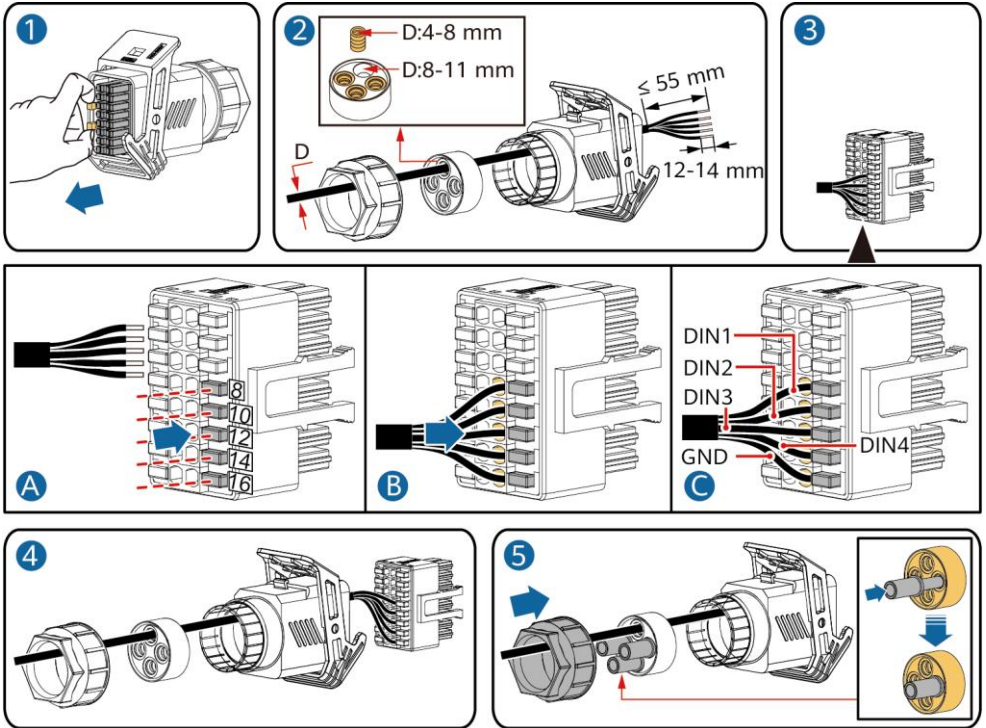


IS10I20007



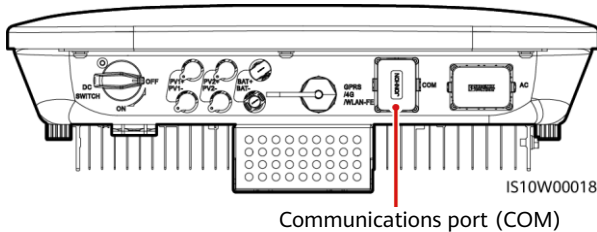
## (Optional) Installing the Grid Scheduling Dry Contact Signal Cable

1. Connect the signal cable to the signal cable connector.

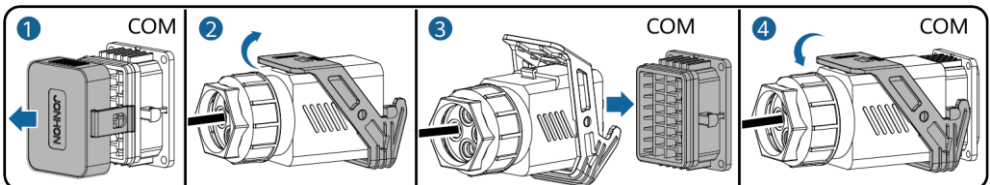


IS10I20010

2. Connect the signal cable connector to the Communication port.



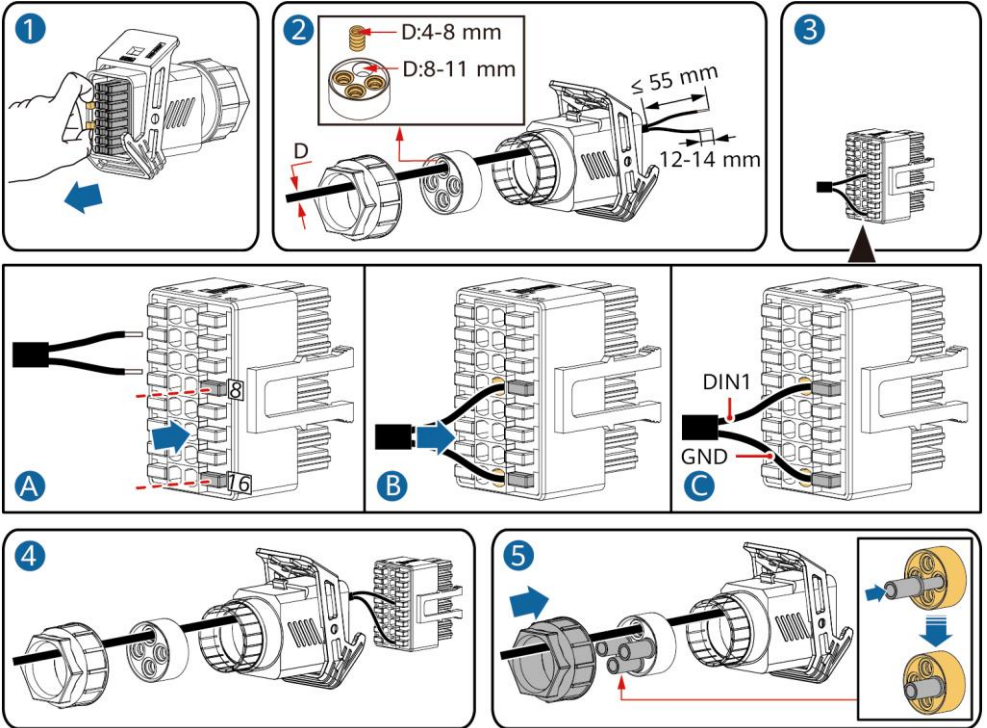
Communications port (COM)



IS10I20007

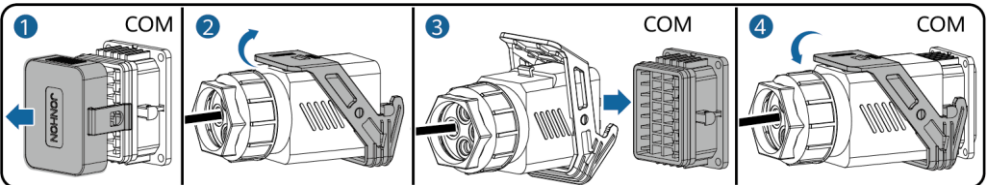
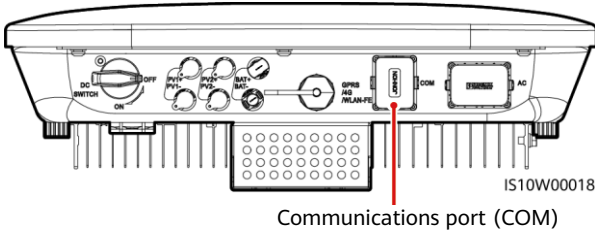
## (Optional) Installing Signal Cables for a Smart Backup Box

1. Connect the signal cable to the signal cable connector.



IS10I20018

2. Connect the signal cable connector to the Communication port.



IS10I20007

## 4 Verifying Installation

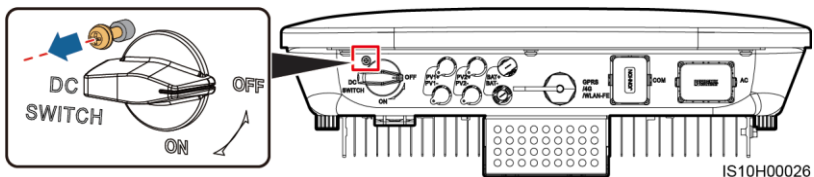
| No. | Acceptance Criteria  |
|-----|--|
| 1   | The inverter is installed correctly and securely.  |
| 2   | Cables are routed properly as required by the customer.  |
| 3   | The Smart Dongle is installed correctly and securely.  |
| 4   | Cable ties are evenly distributed and no burr exists.  |
| 5   | The PE cable is connected correctly, securely, and reliably.   |
| 6   | The DC switch and all the switches connected to the inverter are set to the OFF position.                              |
| 7   | The AC output power cable, DC input power cable, battery cable, and signal cable are connected correctly and securely. |
| 8   | Unused terminals and ports are locked by watertight caps.  |
| 9   | The installation space is proper, and the installation environment is clean and tidy.                                  |

## 5 Powering On the System

### NOTICE







- Before turning on the AC switch between the solar inverter and the power grid, check that the AC voltage is within the specified range using a multimeter set to the AC position.
- If the solar inverter is connected to an LG battery, turn on the DC switch within 1 minute after turning on the AC switch. If you turn on the DC switch after more than 1 minute, the solar inverter will shut down and start again.

1. If a battery is connected, turn on the battery switch.
2. Turn on the AC switch between the solar inverter and the power grid.
3. (Optional) Remove the screw for locking the DC switch.



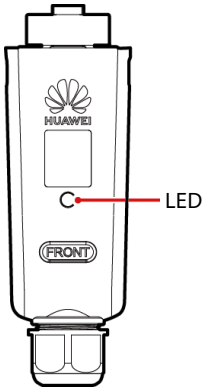
4. Turn on the DC switch (if any) between the PV string and the solar inverter.
5. Turn on the DC switch at the bottom of the solar inverter.

6. Observe the LEDs to check the operating status of the inverter.

| Type                          | Status (Blinking at long intervals: On for 1s and then Off for 1s; Blinking at short intervals: On for 0.2s and then Off for 0.2s) |  | Meaning   |   |
|-------------------------------|--|--|---|---|
| Running indication            | <br>○   | <br>○   | N/A   |   |
|                               | Steady green   | Steady green   | The solar inverter is operating in grid-tied mode.  |   |
|                               | Blinking green at long intervals   | Off  | The DC is on and the AC is off.   |   |
|                               | Blinking green at long intervals   | Blinking green at long intervals   | Both the DC and AC are on, and the solar inverter is not exporting power to the power grid.   |   |
|                               | Off  | Blinking green at long intervals   | The DC is off and the AC is on.   |   |
|                               | Off  | Off  | Both the DC and AC are off.   |   |
|                               | Blinking red at short intervals  | N/A  | There is a DC environmental alarm, such as an alarm indicating that High String Input Voltage, String Reverse Connection, or Low Insulation Resistance. |   |
|                               | N/A  | Blinking red at short intervals  | There is an AC environmental alarm, such as an alarm indicating Grid Undervoltage, Grid Overvoltage, Grid Overfrequency, or Grid Underfrequency.        |   |
|                               | Steady red   | Steady red   | Fault.  |   |
| Communication indication      | <br>○   |  | N/A   |   |
|                               | Blinking green at short intervals  |  | Communication is in progress.   |   |
|                               | Blinking green at long intervals   |  | A mobile phone is connected to the solar inverter.  |   |
|                               | Off  |  | There is no communication.  |   |
| Device replacement indication | <br>○   | <br>○ | <br>○  | N/A   |
|                               | Steady red   | Steady red   | Steady red  | The solar inverter hardware is faulty. The solar inverter needs to be replaced. |

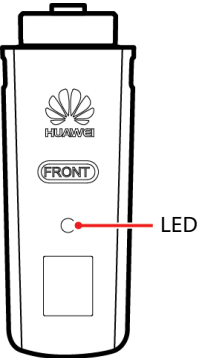
7. (Optional) Observe the LED to check the operating status of the Smart Dongle.

### WLAN-FE Smart Dongle



| LED  |   | Description  |
|--|---|--|
| Color  | Status  |  |
| Yellow (blinking green and red simultaneously) | Steady on   | The Dongle is secured and powered on.  |
| Red  | Blinking at short intervals (on for 0.2s and then off for 0.2s) | The parameters for connecting to the router are to be set.                   |
| Green  | Blinking at long intervals (on for 0.5s and then off for 0.5s)  | Connecting to the router   |
| Green  | Steady on   | Successfully connected to the management system.                             |
| Green  | Blinking at short intervals (on for 0.2s and then off for 0.2s) | The inverter is communicating with the management system through the Dongle. |

### 4G Smart Dongle



| LED  |  | Description  |
|--|--|--|
| Color  | Status   |  |
| Yellow (blinking green and red simultaneously) | Steady on  | The Dongle is secured and powered on.  |
| Green  | Blinking in a 2-second cycle (on for 0.1s and then off for 1.9s) | Dialing (duration < 1 min)   |
| Green  | Blinking at long intervals (on for 1s and then off for 1s)       | The dial-up connection is set up successfully (duration < 30s).              |
| Green  | Steady on  | Successfully connected to the management system.                             |
| Green  | Blinking at short intervals (on for 0.2s and then off for 0.2s)  | The inverter is communicating with the management system through the Dongle. |

## 6 Commissioning

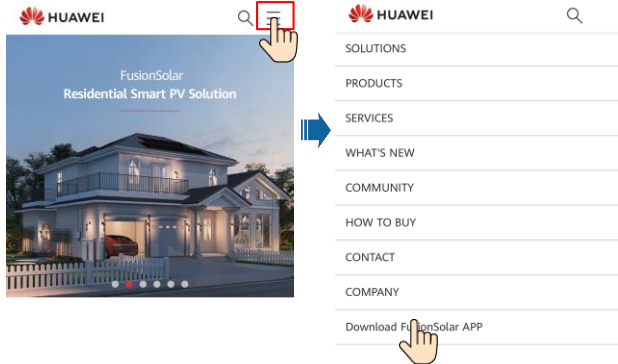
**NOTE**

- The screenshots are for reference only. The actual screens may vary.
- Obtain the initial password for connecting to the solar inverter WLAN from the label on the side of the solar inverter.
- To ensure account security, change the password periodically and keep the new password in mind. Not changing the password may cause password disclosure. A password left unchanged for a long period of time may be stolen or cracked. If a password is lost, devices cannot be accessed. In these cases, the user is liable for any loss caused to the PV plant.
- Before maintaining the optimizers and PV strings, turn off the AC switch and set the DC switch to OFF. Otherwise, the PV strings may be energized, resulting in electric shocks.

## 6.1 Downloading the App

Method 1: Search for FusionSolar on Huawei AppGallery and download the latest installation package.

Method 2: Access <https://solar.huawei.com> using the mobile phone browser and download the latest installation package.



Method 3: Scan the following QR code and download the latest installation package.



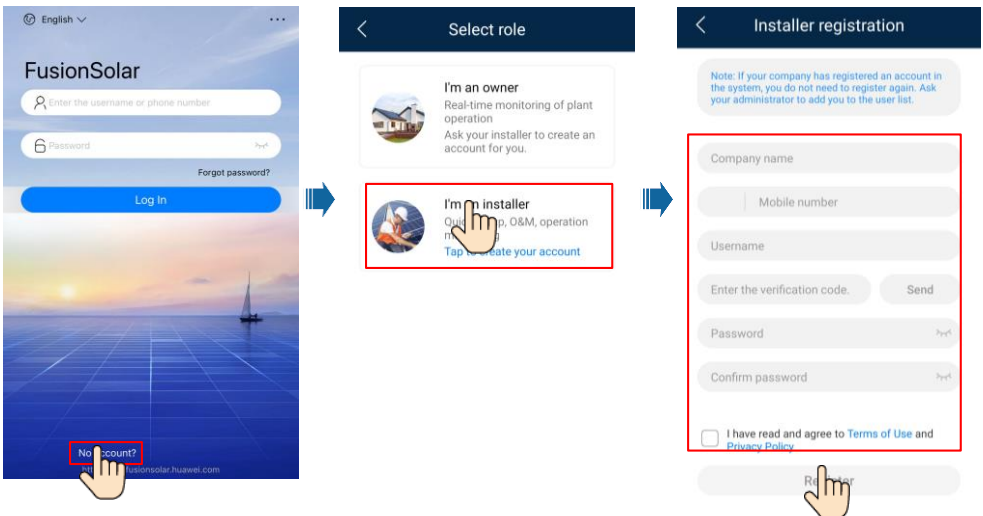
FusionSolar

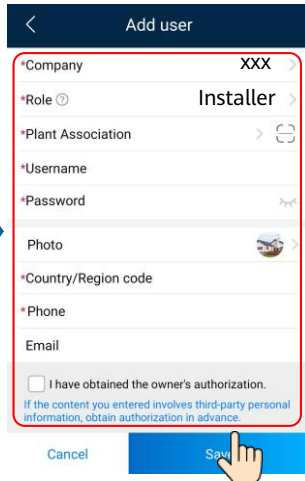
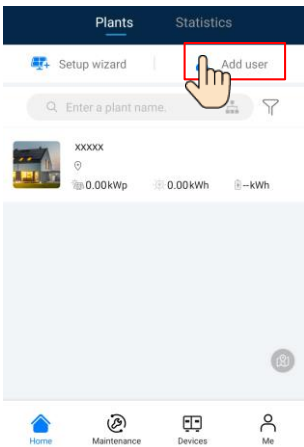
## 6.2 (Optional) Registering an Installer Account

### NOTE

If you already have an installer account, skip this step.

Creating the first installer account will generate a domain named after the company.

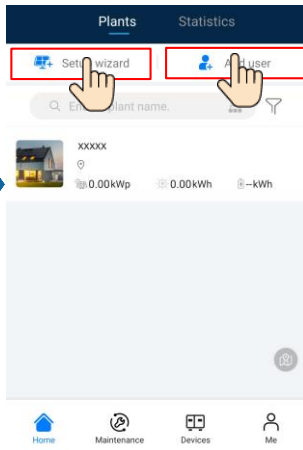
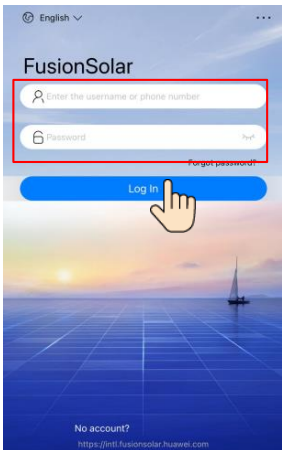




**NOTICE**

To create multiple installer accounts for a company, log in to the FusionSolar app and tap **Add user** to create an installer account.

### 6.3 Creating a PV Plant and a Plant Owner



**NOTE**

- In the quick settings, the grid code is set to N/A by default (automatic startup is not supported). Set the grid code on the area where the PV plant is located.
- For details, see the *FusionSolar App Quick Guide*. You can scan the QR code to download the quick guide.




### 6.4 Setting the Physical Layout of Smart PV Optimizers

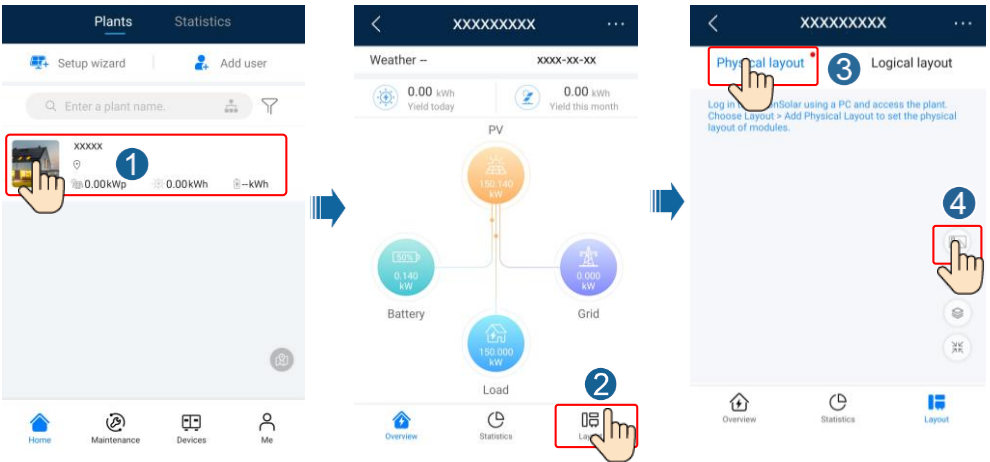
**NOTE**

- If Smart PV Optimizers are configured for PV strings, ensure that the Smart PV Optimizers have been successfully connected to the solar inverter before performing the operations in this section.
- The PV strings connecting to the same MPPT route should contain the same number and model of PV modules or Smart PV optimizers.
- Check that the SN labels of Smart PV Optimizers are correctly attached to the physical layout template.
- Take and save a photo of the physical layout template. Place the template on a flat surface. Keep your phone parallel to the template and take a photo in landscape mode. Ensure that the four positioning points in the corners are in the frame. Ensure that each QR code is attached within the frame.
- For details about the physical layout of Smart PV Optimizers, see *FusionSolar App Quick Guide*.

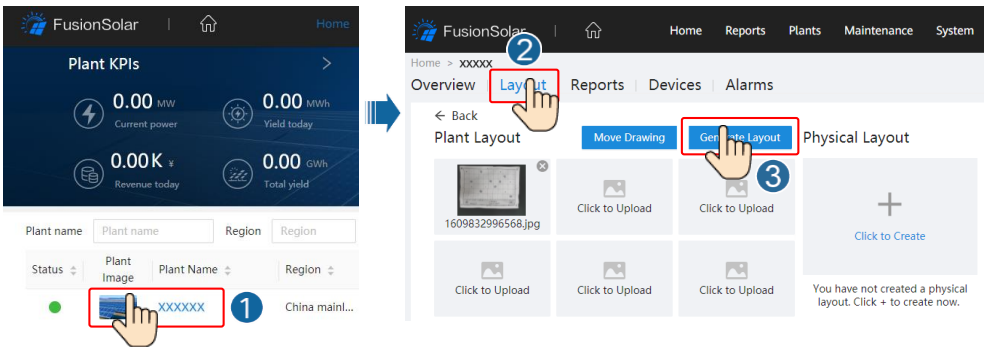


## Scenario 1: Setting on the FusionSolar Server Side (Solar Inverter Connected to the Management System)

1. Tap the plant name on the **Home** screen to access the plant screen. Select **Layout**, tap  and upload the physical layout template photo of the PV plant as prompted.



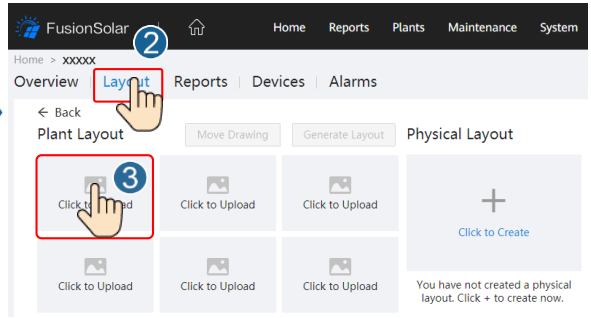
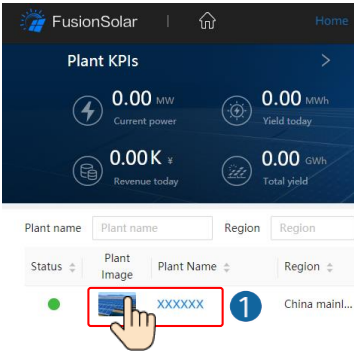
2. Log in to <https://intl.fusionsolar.huawei.com> to access the WebUI of the FusionSolar Smart PV Management System. On the **Home** page, click the plant name to go to the plant page. Select **Layout**. Choose **Generate Layout**, and create a physical layout as prompted. You can also manually create a physical layout.



### NOTE

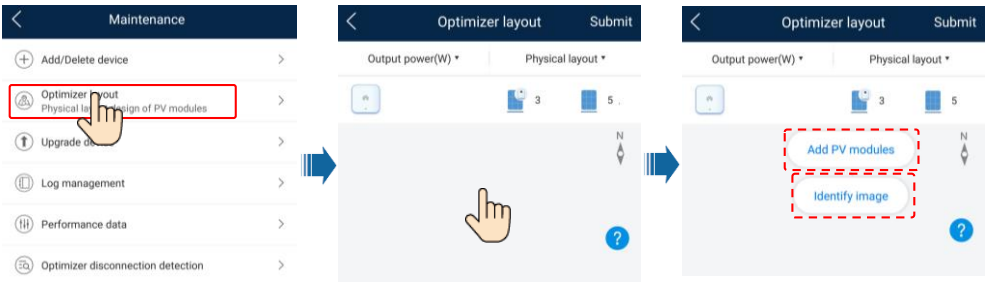
You can also upload the physical layout template photo on the WebUI as follows: Log in to <https://intl.fusionsolar.huawei.com> to access the WebUI of the FusionSolar Smart PV Management System. On the **Home** page, click the plant name to go to the plant page. Select **Layout**. Choose **Click to Upload**, and upload the physical layout template photo.





## Scenario 2: Setting on the Solar Inverter Side (Solar Inverter Not Connected to the Management System)

1. If the solar inverter is not connected to the FusionSolar Smart PV Management System, access the **Device commissioning** screen (Refer to 7.1 Device Commissioning.) on the FusionSolar app to set the physical layout of Smart PV Optimizers.
  - a. Log in to the FusionSolar app. On the **Device commissioning** screen, choose **Maintenance > Optimizer layout**. The **Optimizer layout** screen is displayed.
  - b. Tap the blank area. The **Identify image** and **Add PV modules** buttons are displayed. You can use either of the following methods to perform operations as prompted:
    - Method 1: Tap **Identify image** and upload the physical layout template photo to complete the optimizer layout. (The optimizers that fail to be identified need to be manually bound.)
    - Method 2: Tap **Add PV modules** to manually add PV modules and bind the optimizers to the PV modules.



### NOTE

For details about the physical layout of optimizers on the FusionSolar app and FusionSolar WebUI, see the *FusionSolar App Quick Guide*. You can scan the QR code to download the quick guide.



## 6.5 Setting Battery Parameters

### NOTE

If the solar inverter connects to batteries, set battery parameters.

1. Log in to the **FusionSolar** app and choose **My > Device commissioning**. The **Device commissioning** screen (Refer to 7.1 Device Commissioning.) is displayed.
2. Choose **Power adjustment > Battery control** and set battery parameters, including **Charge from grid, Control mode (Fully fed to grid, TOU(Time-of-use), Maximum self-consumption)**, and so on.



## 6.6 SmartLogger Networking Scenario

For details, see the *PV Plants Connecting to Huawei Hosting Cloud Quick Guide (Inverters + SmartLogger3000 + RS485 Networking)*. You can scan the QR codes to obtain the documents.

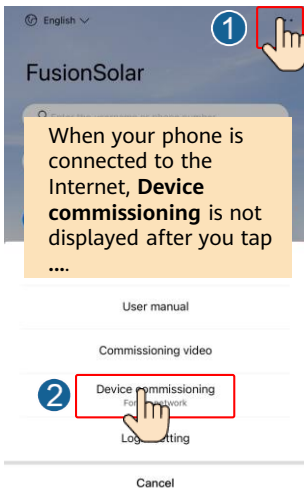


# 7 FAQ

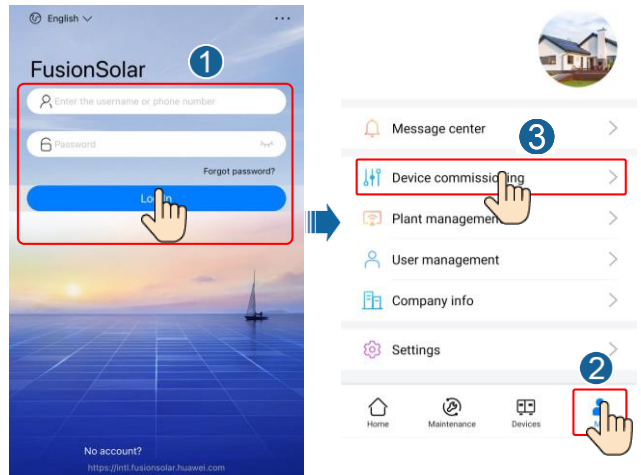
## 7.1 Device Commissioning

1. Access **Device commissioning**.

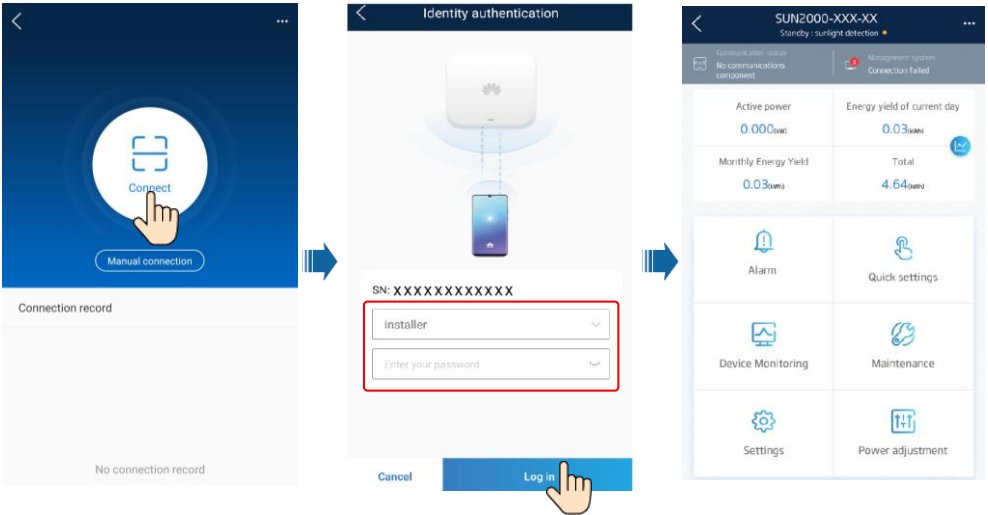
Scenario 1: Your phone is not connected to the Internet.



Scenario 2: Your phone is connected to the Internet.



2. Connect to the solar inverter WLAN and log in as **installer** to access the device commissioning screen.



## 7.2 Resetting the Password

1. Ensure that the SUN2000 connects to the AC and DC power supplies at the same time. Indicators and are steady green or blinking slowly for more than 3 minutes.
2. Perform the following operations within 4 minutes:
  - a. Turn off the AC switch and set the DC SWITCH at the bottom of the SUN2000 to OFF. If the SUN2000 connects to batteries, turn off the battery switch. Wait until all the LED indicators on the SUN2000 panel turn off.
  - b. Turn on the AC switch, set the DC SWITCH to ON, and wait for about 90s. Ensure that the indicator is blinking green slowly.
  - c. Turn off the AC switch and set the DC SWITCH to OFF. Wait until all LED indicators on the SUN2000 panel turn off.
  - d. Turn on the AC switch and set the DC SWITCH to ON. Wait until all indicators on the SUN2000 panel blink and turn off 30 seconds later.
3. Reset the password within 10 minutes. (If no operation is performed within 10 minutes, all inverter parameters remain unchanged.)
  - a. Wait until the indicator blinks green slowly.
  - b. Obtain the initial WLAN hotspot name (SSID) and initial password (PSW) from the label on the side of the SUN2000 and connect to the SUN2000 on the app.
  - c. On the login screen, set a new login password and log in to the app.
4. Set router and management system parameters to implement remote management.

# 8 Installation Video

### NOTE

You can scan the QR code below to obtain the installation video.



## 9 Customer Service Contact

| Customer Service Contact |                   |   |   |
|--------------------------|-------------------|---|---|
| Region                   | Country           | Service Support Email   | Phone   |
| Europe                   | France            | eu_inverter_support@huawei.com  | 0080033888888   |
|                          | Germany           |   |   |
|                          | Spain             |   |   |
|                          | Italy             |   |   |
|                          | UK                |   |   |
|                          | Netherlands       |   |   |
|                          | Other countries   | For details, see <a href="http://solar.huawei.com">solar.huawei.com</a> . |   |
| Asia Pacific             | Australia         | eu_inverter_support@huawei.com  | 1800046639  |
|                          | Turkey            | eu_inverter_support@huawei.com  | N/A   |
|                          | Malaysia          | apsupport@huawei.com  | 0080021686868<br>/1800220036  |
|                          | Thailand          |   | (+66) 26542662 (charged by local call)<br>1800290055 (free in Thailand) |
|                          | China             | solarservice@huawei.com   | 400-822-9999  |
|                          | Other countries   | apsupport@huawei.com  | 0060-3-21686868   |
| Japan                    | Japan             | solarsupportjp@huawei.com   | 0120258367  |
| India                    | India             | indiaenterprise_TAC@huawei.com  | 1800 103 8009   |
| Republic of Korea        | Republic of Korea | koreainverter@huawei.com  | N/A   |
| North America            | USA               | eu_inverter_support@huawei.com  | 1-877-948-2934  |
|                          | Canada            | eu_inverter_support@huawei.com  | 1-855-482-9343  |
| Latin America            | Mexico            | la_inverter_support@huawei.com  | 018007703456<br>/0052-442-4288288                                       |
|                          | Argentina         |   | 0-8009993456  |
|                          | Brazil            |   | 0-8005953456  |
|                          | Chile             |   | 800201866 (only for fixed)  |
|                          | Other countries   |   | 0052-442-4288288  |
| Middle East and Africa   | Egypt             | eu_inverter_support@huawei.com  | 08002229000<br>/0020235353900   |
|                          | UAE               |   | 08002229000   |
|                          | South Africa      |   | 0800222900  |
|                          | Saudi Arabia      |   | 8001161177  |
|                          | Pakistan          |   | 0092512800019   |
|                          | Morocco           |   | 0800009900  |
|                          | Other countries   |   | 0020235353900   |

**Huawei Technologies Co., Ltd.**  
Huawei Industrial Base, Bantian, Longgang  
Shenzhen 518129 People's Republic of China  
[solar.huawei.com](http://solar.huawei.com)