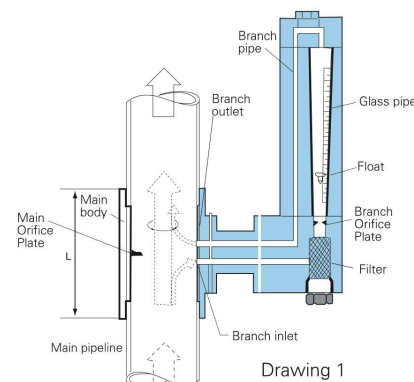


KF600 Series . . . Orifice Plate Flowmeter

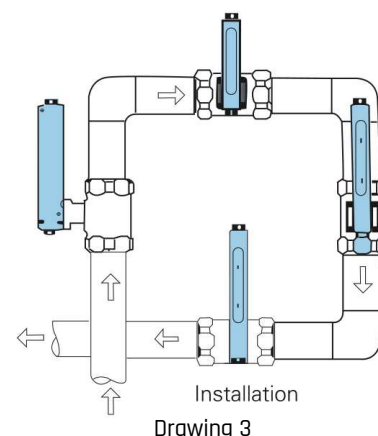
Illustrated as drawing 1, when the liquid pass through main hole's plate, the pressure difference between front side and back side happens, there is a respondent function relation between the pressure difference and flow speed. Installing as small rotor flowmeter on the in-outlet of branch, i.e. to make that the flow volume through small rotor flowmeter is same to the volume through main pipe, therefore the flow volume's data in main pipe can be read through buoy position and scale on small rotor flowmeter. The cut-off valve installed between measure pipe and indicator can make the flowmeter's take-down or repair conveniently when the main pipe is being in normal working situation.

Specification

Accuracy : ±2.5 %	Material :
Type : Thread, Wafer, Flange	Thread Type (AT) : 304SS
Working pressure limit : 10 Bar	Wafer Type (AC) : 304SS, POM
Temperature limit :	Flange Type (AF) : 304SS
POM (Polyformaldehyde) Material (AC) : 0-100°C	
304SS Material (AT, AC, AF) : 0-120°C	
Option : Isolation Valve, Alarm Switch	



DN	Pipe Size	Measuring range	
		Water (m³/h)	Air (N m³/h)
10	3/8"	0.1-0.5	0.8-4
15	1/2"	0.2-1	2-10
20	3/4"	0.5-2.5	5-25
25	1"	1-5	8-40
32	1 1/4"	1.4-7	12-60
40	1 1/2"	2-10	18-90
50	2"	4-20	35-175
65	2 1/2"	7-35	60-300
80	3"	10-50	80-400
100	4"	18-90	160-800
125	5"	25-125	250-1250
150	6"	40-200	350-1700
200	8"	70-350	600-2800
250	10"	100-500	900-5000
300	12"	180-900	1600-7800
350	14"	200-1000	2000-9500
400	16"	300-1500	3000-14500



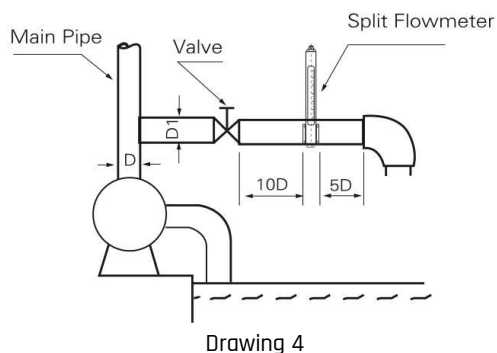
• **Note:** We need detail data of working pressure, working temperature, density for gas medium.

Flow direction

The product can be changed different directions illustrated as drawing 3. the flow direction can divide as: bottom-top, left-right, right-left and top-bottom. It is easy to change flow direction on the spot.

Length of straight pipe recommend

For purpose to measure the flow speed precisely recommend to use length of straight pipe illustrated as drawing 4



Length of straight pipe	90° Elbow / Tee	Fully open valve
Upstream pipe	10D	12D
Downstream pipe	5D	5D

D : Inside diameter of the pipe

KF600 Series . . . Orifice Plate Flowmeter

Reading flow rate

Measure gas	Indicator(for liquids)
Center →	Top →
Metal material	PVC material
Top →	Top →

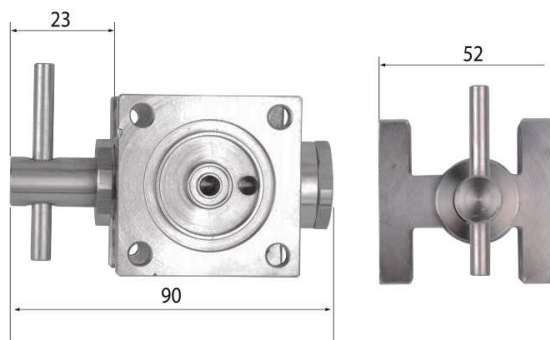
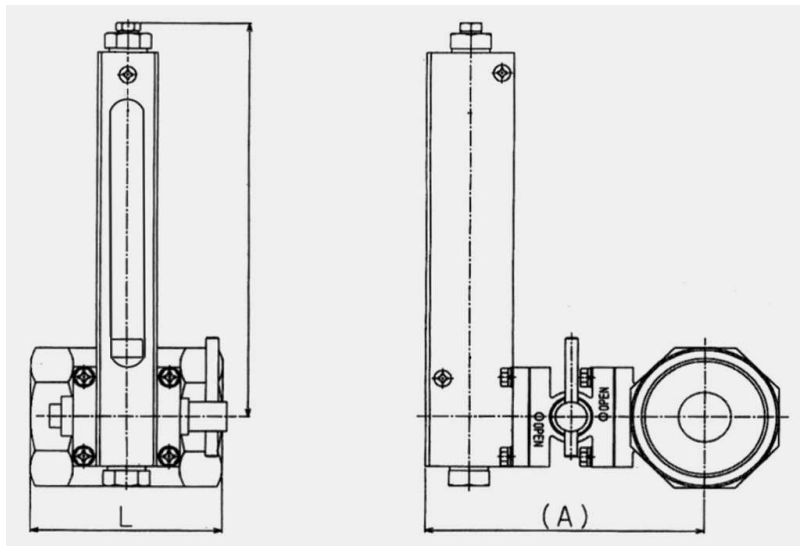


AT TYPE

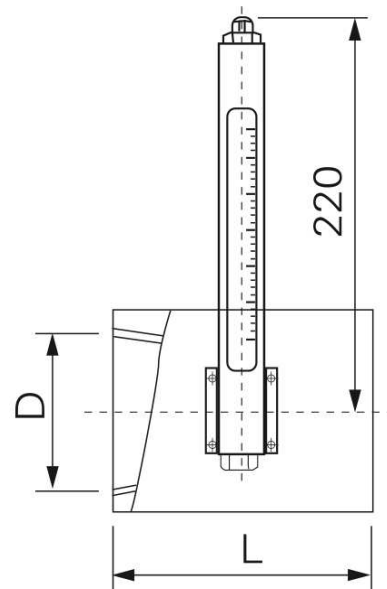
AT Type 304SS Material Dimension (mm)

DN	304SS Material		
	L	A (with valve)	Weight (Kg)
10	70		0.5
15	70		0.43
20	70		1.01
25	70		1.2
32	70	120	1.4
40	84	120	1.6
50	80	130	2.3
65	80	140	3.1
80	90	145	4.3
100	100	160	6

Note : A : If without valve then A length need reduce 52 mm



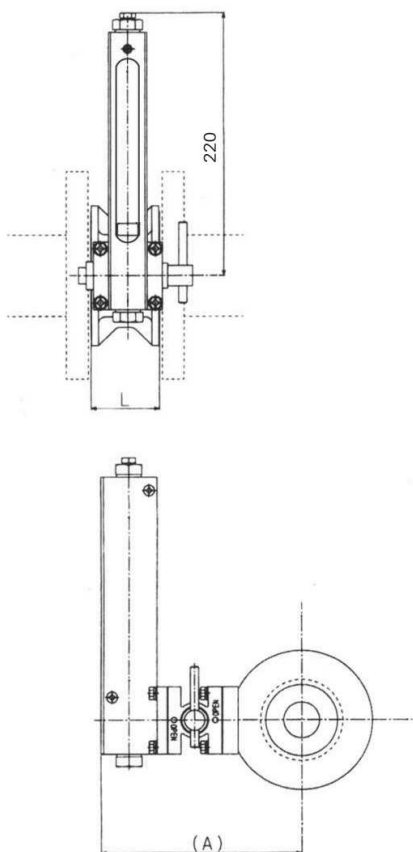
ISOLATION VALVE (OPTION) DIMENSION



AC Type (Wafer) External Dimension (mm)

DN	L	A (with valve)
10	50	137
15	50	140
20	50	145
25	50	150
32	50	165
40	50	170
50	50	178
65	50	190
80	50	195
100	50	200
125	50	220
150	50	240
200	50	270
250	50	295
300	50	320
350	65	350
400	65	380

Note : A : If without valve then A length need reduce 52 mm



AC Type Dimension



AC Type Dimension

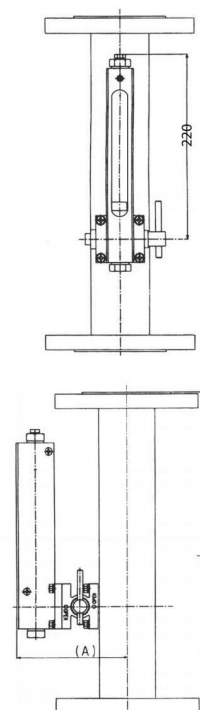
AF Type (Flange) External Dimension (mm)

DN	L	A (with valve)
10	520	-
15	520	-
20	520	-
25	520	-
32	520	-
40	520	138
50	520	143
65	540	150
80	540	157
100	540	168
125	540	180
150	540	193
200	540	218
250	540	242
300	540	268
350	540	460
400	540	510

Note : A : If without valve then A length need reduce 52 mm



AF



AF Type Dimension