

โกสั้ววาล์วเหล็กหล่อ: Model 400AE (โกสั้ววาล์วเหล็กหล่อ คลาส 125 ปอนด์)

ชั้นเกลียวประกบด้านนอก, ก้านขยับขึ้นลง, ฟาครอบชั้นเนื้อต, ปลายเป็นหน้าแปลน



ชิ้นส่วนและวัสดุที่ใช้

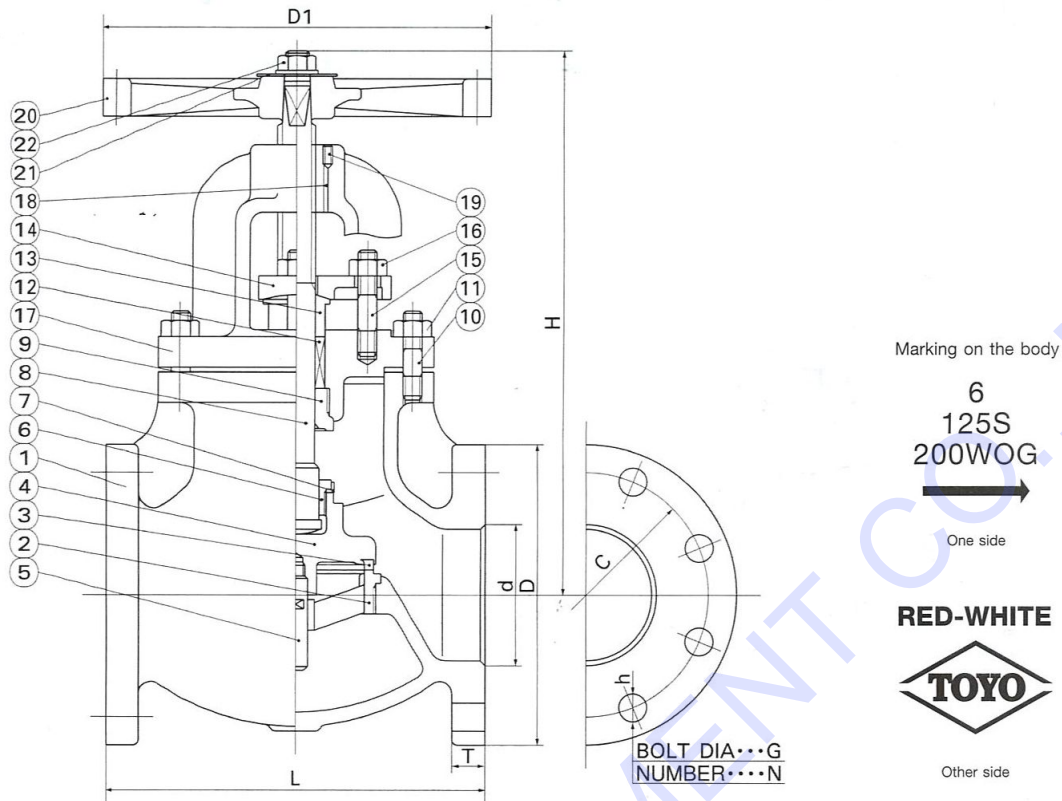
| No. | Name of parts | | ASTM Specification |
|-----|-----------------|-----------------------|--------------------|
| 1 | Body | Cast iron | A126 Class B |
| 2 | Body seat ring | Cast Bronze | B62-C83600 |
| 3 | Disc seat ring | Cast Bronze | B62-C83600 |
| 4 | Disc | Cast iron | A126 Class B |
| 5 | Guide spindle | Brass | B16-C36000 |
| 6 | Disc nut | Brass | B16-C36000 |
| 7 | Washer | Brass | B16-C36000 |
| 8 | Stem | Brass | B16-C36000 |
| 9 | Bonnet bush | Brass | B16-C36000 |
| 10 | Bonnet bolt | Steel* | A307 Grade B |
| 11 | Bonnet bolt nut | Steel* | A307 Grade B |
| 12 | Packings | Non-asbestos packings | |
| 13 | Gland | Brass | B16-C36000 |
| 14 | Gland flange | Ductile iron | A536 |
| 15 | Gland bolt | Steel* | A307 Grade B |
| 16 | Gland bolt nut | Steel* | A307 Grade B |
| 17 | Bonnet | Cast iron | A126 Class B |
| 18 | Stem nut | Brass | B16-C36000 |
| 19 | Set screw | Steel* | A307 Grade B |
| 20 | Hand wheel | Cast iron | A126 Class B |
| 21 | Name plate | Aluminum | |
| 22 | Wheel nut | Steel* | A307 Grade B |

*Zinc plated

ค่าความดัน – อุณหภูมิ

| Service Temperature | | Sizes 2" to 12" | |
|------------------------------|-----------|-----------------|------|
| °F | °C | Psig | Bar |
| -20 to 150 | -29 to 66 | 200 | 13.7 |
| 200 | 93 | 190 | 13.1 |
| 225 | 107 | 180 | 12.4 |
| 250 | 121 | 175 | 12.0 |
| 275 | 135 | 170 | 11.7 |
| 300 | 149 | 165 | 11.3 |
| 325 | 163 | 155 | 10.6 |
| 353(5) | 178 | 150 | 10.3 |
| 375 | 191 | 145 | 10.0 |
| 406(6) | 208 | 140 | 9.6 |
| 425 | 218 | 130 | 8.9 |
| 450 | 232 | 125 | 8.6 |
| Hydrostatic Test pressure | Shell | 350 | 24.1 |
| | Seat | 200 | 13.7 |

1. Pressure-temperature ratings extracted from ASME B16. 1 apply to cast iron flanged end valves designed for primary working pressures in Class 125.
2. Pressure ratings specified above are used for cast iron valves with metal-to-metal seating surfaces. Pressure-temperature ratings for cast iron valves with non-metallic seat materials must be limited to reflect the physical characteristics of these materials at each temperature and may be lower, but in no case higher than values shown in the above table.
3. The temperature shown to a corresponding pressure rating shall be the metal temperature of pressure containing parts. It shall be assumed that the metal temperature will be the temperature of the contained fluid. Application of a pressure rating at a metal temperature other than that of the contained fluid is strictly limited to the responsibility of the user.
4. The pressure rating in service shall be restricted to the minimum temperature of -20°F (-29°C) as shown above.
5. 353°F (Max.) to reflect the temperature of saturated steam at 125 psi.
6. 406°F (Max.) to reflect the temperature of saturated steam at 250 psi.



Note :

1. Face-to-face dimensions conform to ASME B16. 10.
2. End flange dimensions and drillings conform to ASME B 16.1 End flanges are fully flat faced and smoothly finished in accordance with MSS SP-6.
3. JIS10K and BS/DIN PN16 flanged ends are available upon request.
4. Drain boss and by-pass bosses are available upon request.
5. Valves conform to MSS SP-85.

ขนาด

| Size | Mark | L | H | D1 | Flanges | | | | | | Weight | |
|------|------|------|-------|-------|---------|-------|------|----|------|------|--------|-----|
| | | | | | D | C | T | N | h | G | lb | Kg. |
| 2 | in. | 8 | 12.6 | 7.87 | 6.00 | 4.75 | 0.62 | 4 | 0.75 | 0.62 | 51 | 23 |
| | mm. | 203 | 320 | 200 | 152 | 121 | 15.9 | | 19.0 | 15.9 | | |
| 2 ½ | in. | 8.5 | 13.58 | 7.87 | 7.00 | 5.50 | 0.69 | 4 | 0.75 | 0.62 | 66 | 30 |
| | mm. | 216 | 345 | 200 | 178 | 140 | 17.5 | | 19.0 | 15.9 | | |
| 3 | in. | 9.5 | 15.24 | 10 | 7.50 | 6.00 | 0.75 | 4 | 0.75 | 0.62 | 84 | 38 |
| | mm. | 241 | 387 | 254 | 191 | 152 | 19.0 | | 19.0 | 15.9 | | |
| 4 | in. | 11.5 | 19.29 | 11.81 | 9.00 | 7.50 | 0.94 | 8 | 0.75 | 0.62 | 132 | 60 |
| | mm. | 292 | 490 | 300 | 229 | 191 | 23.8 | | 19.0 | 15.9 | | |
| 5 | in. | 13 | 22.68 | 13.78 | 10.00 | 8.50 | 0.94 | 8 | 0.88 | 0.75 | 174 | 79 |
| | mm. | 330 | 576 | 350 | 254 | 216 | 23.8 | | 22.2 | 19.0 | | |
| 6 | in. | 14 | 26.77 | 15.75 | 11.00 | 9.50 | 1.00 | 8 | 0.88 | 0.75 | 234 | 106 |
| | mm. | 356 | 680 | 400 | 279 | 241 | 25.4 | | 22.2 | 19.0 | | |
| 8 | in. | 19.5 | 31.81 | 17.72 | 13.50 | 11.75 | 1.12 | 8 | 0.88 | 0.75 | 417 | 189 |
| | mm. | 495 | 808 | 450 | 343 | 299 | 28.6 | | 22.2 | 19.0 | | |
| 10 | in. | 24.5 | 39.76 | 19.88 | 16.00 | 14.25 | 1.19 | 12 | 1.00 | 0.88 | 666 | 302 |
| | mm. | 622 | 1010 | 505 | 406 | 362 | 30.2 | | 25.4 | 22.2 | | |
| 12 | in. | 27.5 | 42.52 | 24.02 | 19.00 | 17.00 | 1.25 | 12 | 1.00 | 0.88 | 908 | 412 |
| | mm. | 698 | 1080 | 610 | 483 | 432 | 31.8 | | 25.4 | 22.2 | | |

*Design and materials are subject to change without notice.