

Directional Control Valve P80 with Joy Stick

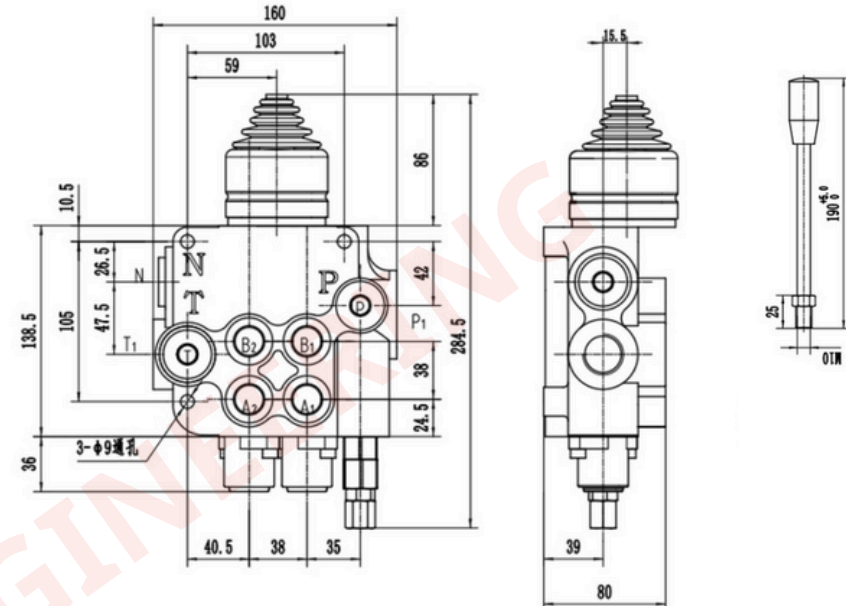


Main features

- Cast iron body monoblock
- Parallel circuit, each spool has its own check valve
- Provide different spool to be used for double acting cylinder or hydraulic motor
- Provide relief valve adjustable pressure 20 Mpa
- Manual and joystick control for precise and efficient operation

Technical Data

Structure Type	Monoblock valve
Control Method	Manual Joystick
Rated Flow	80 L/min
Max pressure	315 bar
Operating Viscosity Range	15 - 75 mm ² /s
Ambient Temperature Range	-40°C to +80°C



The P80-G12-G34 Manual and Joystick 2 Spool Monoblock Directional Valve is a high-performance hydraulic valve designed for various applications in material handling, construction, agriculture, and industrial vehicles. It features manual and joystick control, a 2-section monoblock structure, a rated flow of 80 L/min, a maximum pressure of 250 bar, and an operating viscosity range of 15 - 75 mm²/s. This valve is suitable for use in temperatures ranging from -40°C to +80°C (-40°F to +176°F).

Hydraulic Circuit

