

## *Double Gear pump Group 2*

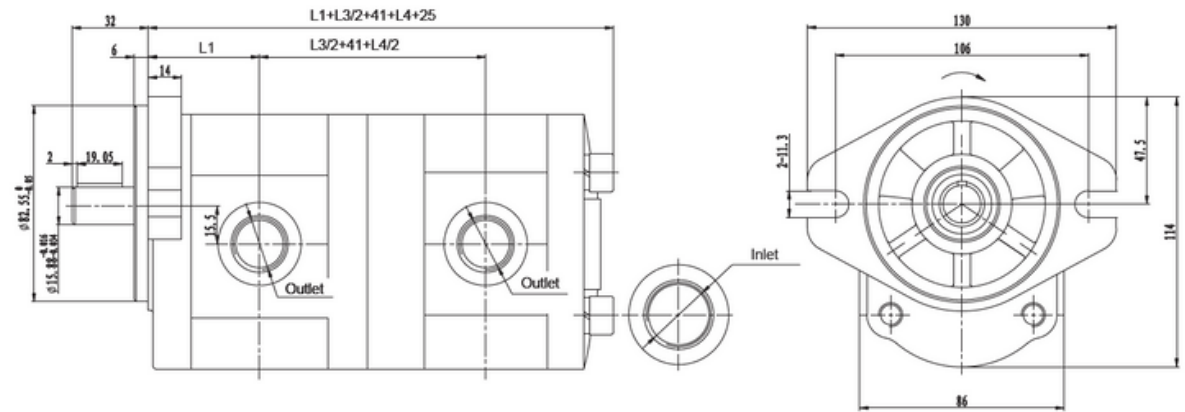
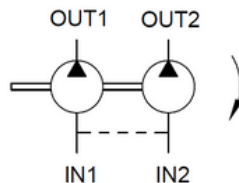
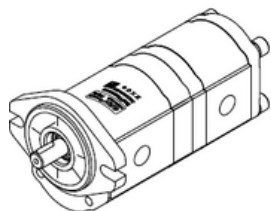


A double aluminum gear pump consists of two gear pump sections combined into a single housing, usually made from lightweight aluminum alloy. It is used to generate hydraulic pressure and flow in systems requiring multiple outputs or circuits, such as in construction machinery, agricultural equipment, and industrial hydraulics.

## Main features

- Two gear pump units in a single body
- Can provide different flow rates or pressures from each section
- Cast iron mounting and rear with aluminum body
- Rated pressure: 20MPa, max. pressure: 25MPa.
- Rated speed: 2000RPM, speed range: 500-3500RPM .

## Hydraulic Symbol



Displacement ( ml/r)	4	6	8	10	12	14	16	18	20	23	28
L3/L4	50.5	54	57	60	63	66	69	72.5	76	80.5	88
L	96	98	102	104	108	110	114	117	120	123	133
L1	43.3	45	46.5	48	50	51	53	55	56	58	63

## Technical Data

Pump Displacement	23 cc/rev + 20 cc/rev
Max speed	500 - 3500 rpm
Max Pressure	250 bar
Rotation	Clockwises (R)
Shaft End	Keyed Shaft Ø22.22mm.
Shaft cover	Mounting Ø82.55mm. , hole-hole 106mm.