



PRO TECH ASIA

COMPANY PROFILE

TABLE OF CONTENTS.

1



ABOUT US

- COMPANY POLICY
- HISTORY
- OUR FOUNDER

2



OUR TEAM

- ORGANIZATION CHART
- MAINTEMANCE TEAM

3



SERVICE

- SCOPE OF WORK

4



EXPERIENCE

- OVERALL WORK
- PORTFOLIO & PROJECT REFERENCE

5



CONTACT

- CONTACT US

OUR POLICY



どうせやるならちゃんとやれ
ถ้าคิดจะทำ ต้องทำให้ดีที่สุด

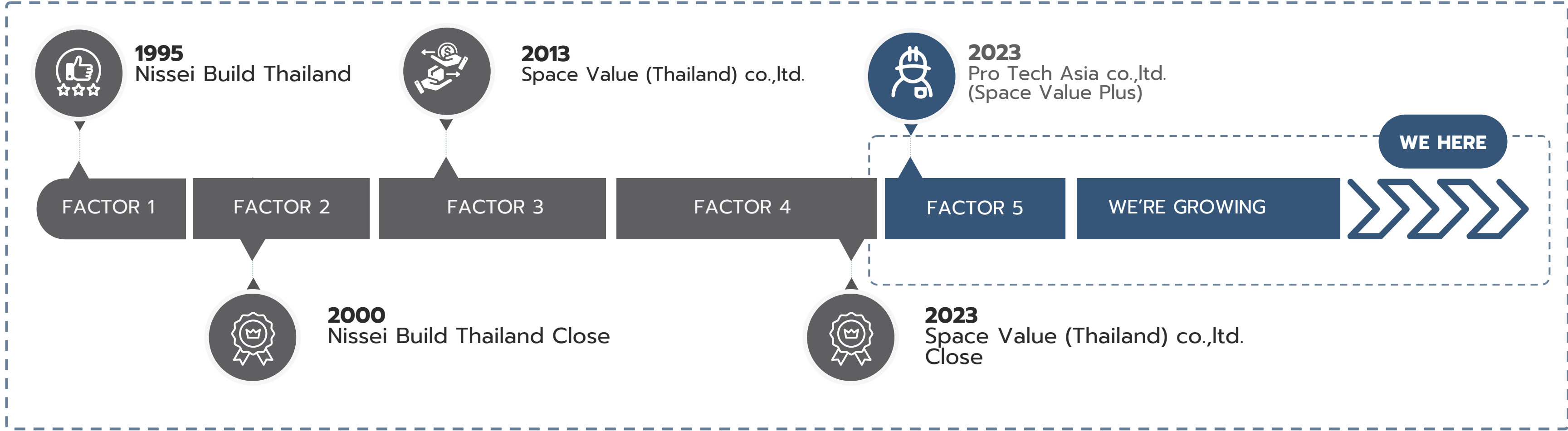
QUICK ACTION!

We are committed to delivering high-quality work with attention to detail, ensuring that every task meets the highest professional standards. Our goal is to contribute to society through excellence in everything we do.

We believe in swift and decisive action, as timely execution is key to success. In the field of mechanical parking maintenance, immediate response is critical. We prioritize rapid action to address errors and malfunctions, ensuring system safety and minimizing downtime for our clients.



OUR HISTORY



Pro Tech Asia, is a highly experienced specialist in automated parking systems with over 50 years of expertise in the industry. With an in-depth understanding of automation technology and parking management.

OUR FOUNDER.



Kentaro Taki

CEO

1st Class Architecture

1st Class Construction Management



Raktrakul Srikham

General Manager

License of Professional Civil Engineer

: Project Manager for installation of big mechanical parking for 7 projects.



Akira Goto

R&D / Maintenance manager

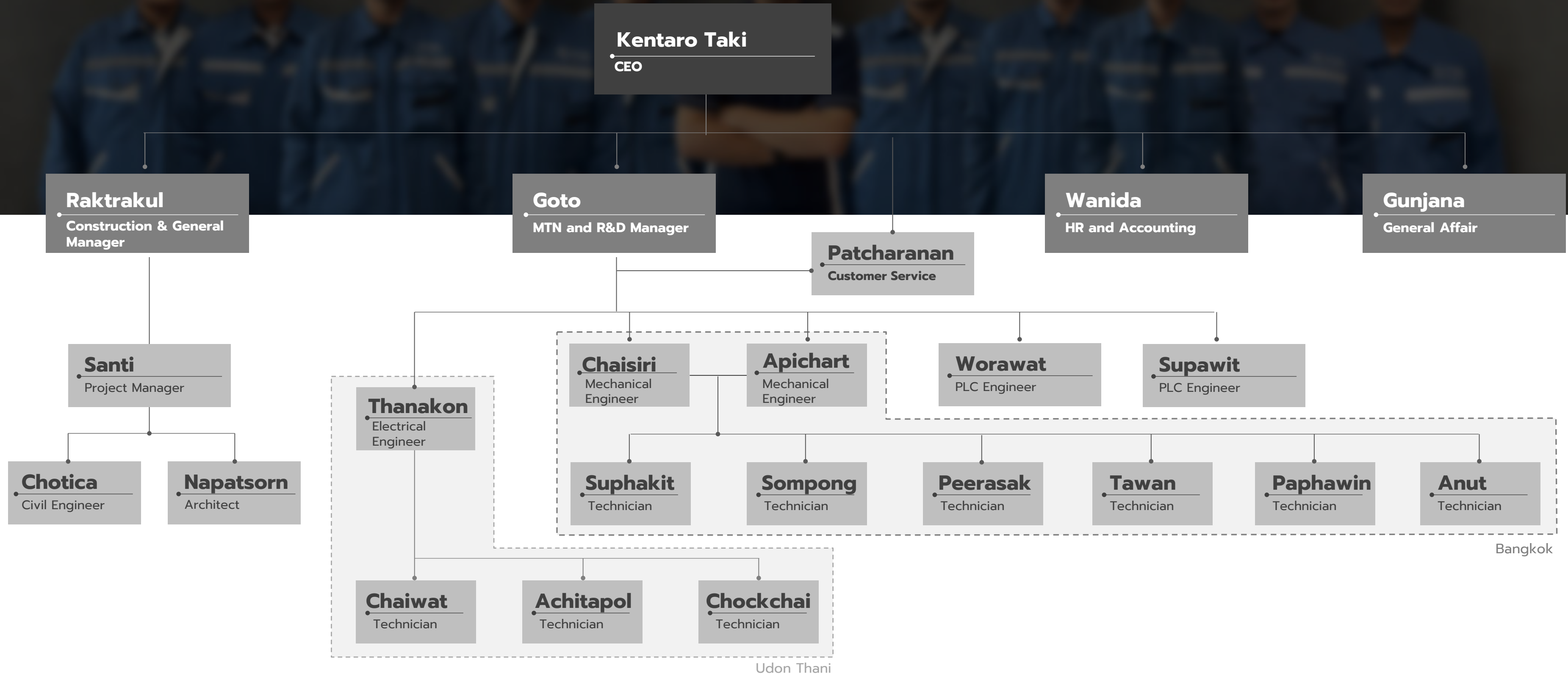
Master Degree of Mechanical Engineering

: 10 years of experience in the mechanical parking field.

Our Responsibilities

Under Mr.Kentaro Taki's leadership, Pro Tech Asia has become a leading provider of **Smart Parking Solutions**, trusted by both public and private sectors. Additionally, our team consists of **highly skilled engineers with specialized degrees in engineering**, ensuring precise design, safe implementation, and optimal performance. With a strong commitment to innovation and technological excellence, **Pro Tech Asia** continues to drive the future of automated parking towards a smarter and more sustainable tomorrow.

ORGANIZATION CHART



OUR MAINTENANCE TEAM



Apichart
Mechanical
Engineer



Chaisiri
Electrical
Engineer



Thanakon
Electrical Engineer
(Udon Thani)



Worawat
PLC Engineer
(Electrical)



Supawit
PLC Engineer
(Electrical)

Office Support



Suphakit
Technician
(Bangkok)



Sompong
Technician
(Bangkok)



Peerasak
Technician
(Bangkok)



Tawan
Technician
(Bangkok)



Paphawin
Technician
(Bangkok)



Anat
Technician
(Bangkok)



Chaiwat
Technician
(Udon Thani)



Achittapol
Technician
(Udon Thani)



Chokchai
Technician
(Udon Thani)

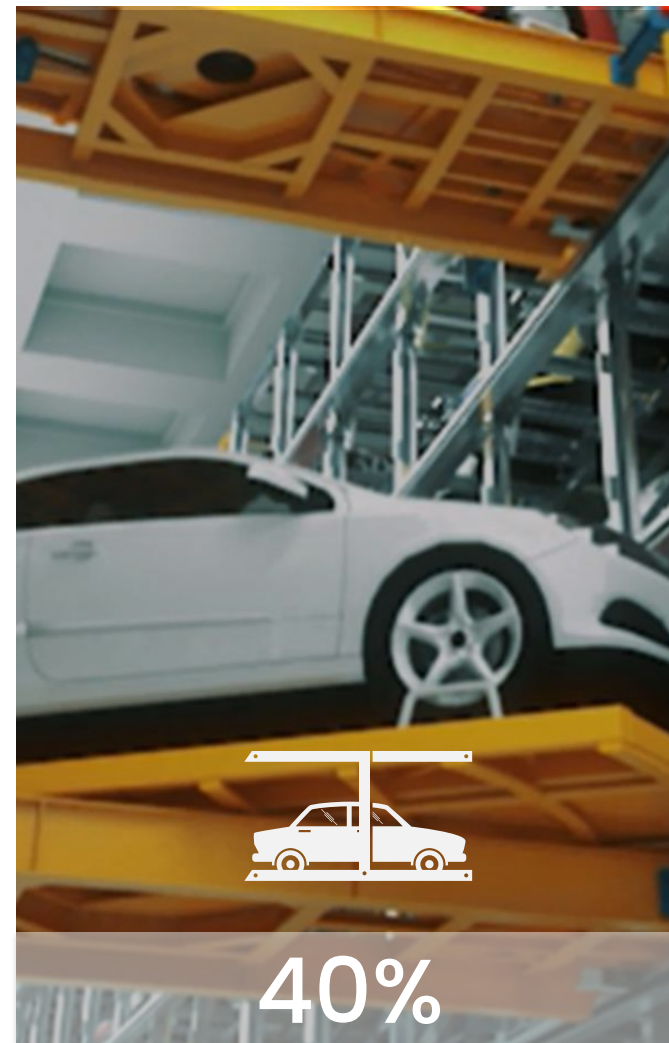
Stand by at Bangkok

Stand by at Udon Thani

OUR SERVICE

①

MECHANICAL CAR PARKING



②

PARKING FACILITIES



③

MAINTENANCE



④

CONSTRUCTION & INSTALLATION



Our Work

We provide comprehensive parking solutions, covering mechanical car parking, parking facilities, maintenance services, and related construction. We're committed to developing technology and services that enhance efficiency, safety and convenience for all parking spaces.

MECHANICAL CAR PARKING

: MCP



①

ROBOT PARKING

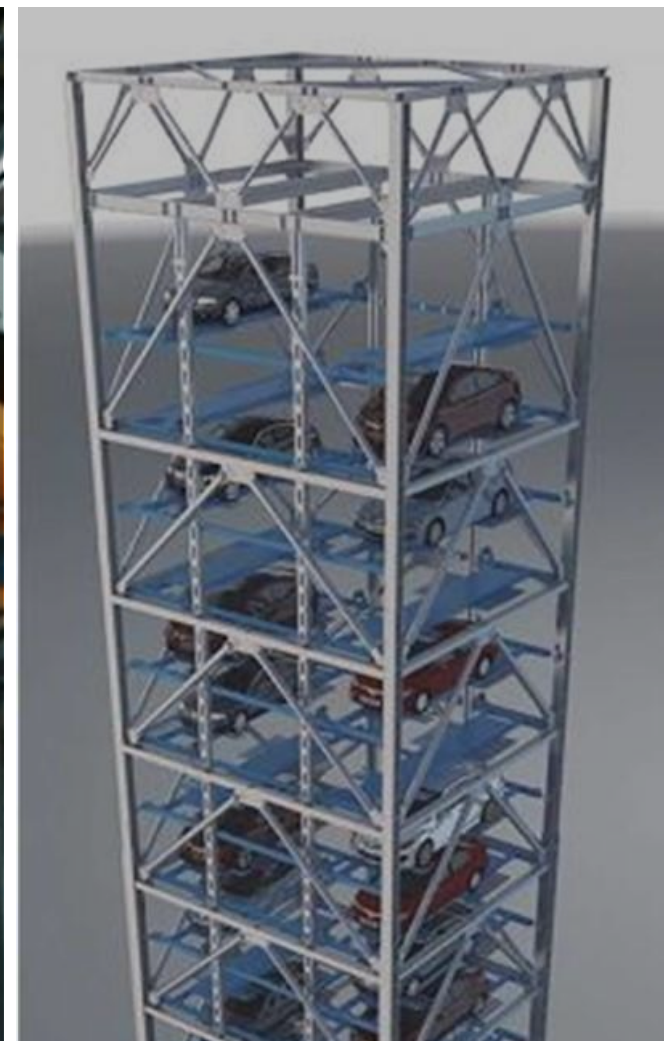
- PPY
- PPZ



②

TOWER PARKING

- Pallet Type



③

PUZZLE PARKING

- Lifting & Traversing Type



④

SIMPLE PARKING

- N2D Type
- Pit Type



Our company specializes in Mechanical Parking Systems, offering 4 advanced parking solutions designed to maximize space efficiency.

With cutting-edge technology, safety, and convenience, our systems cater to residential projects, office buildings, and public spaces.

MECHANICAL PARKING

: MCP

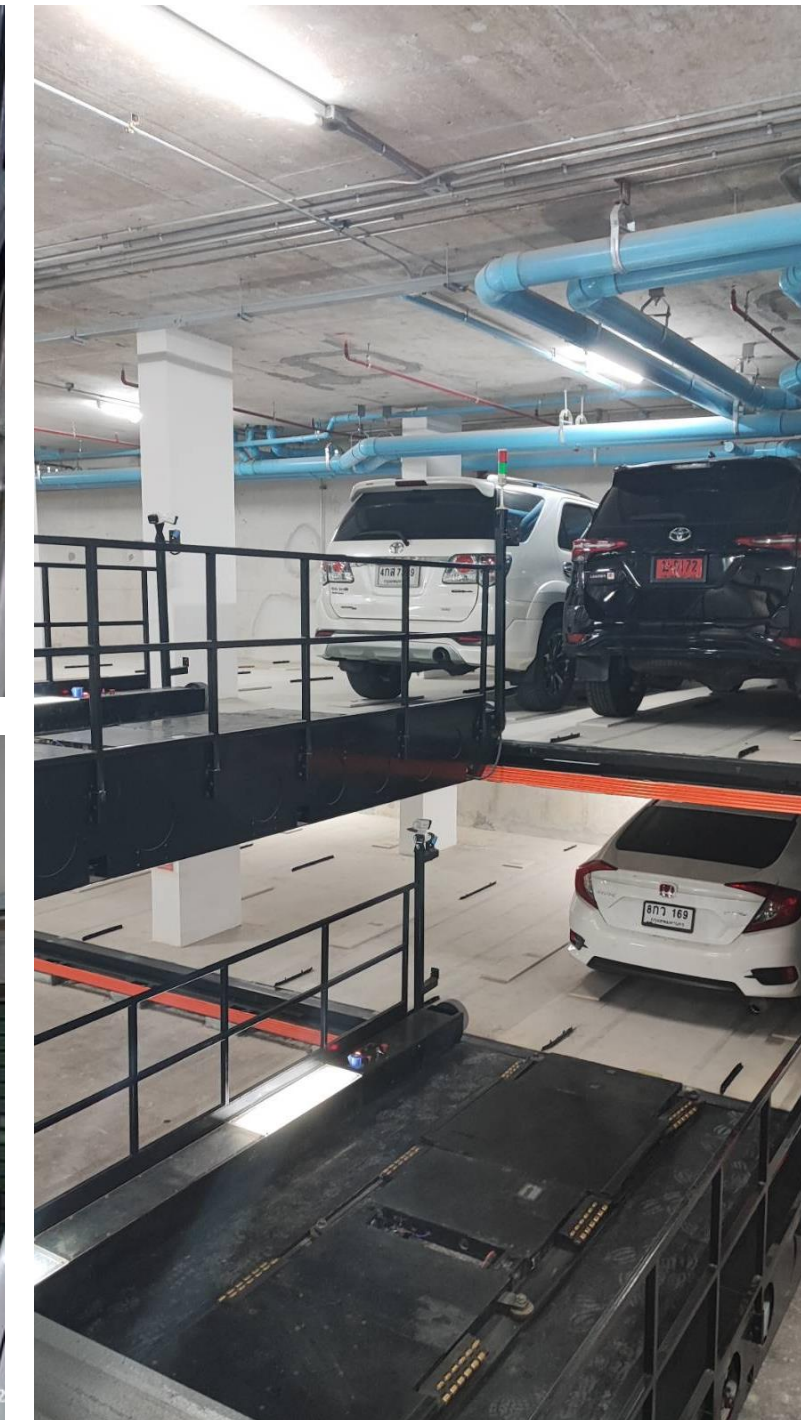
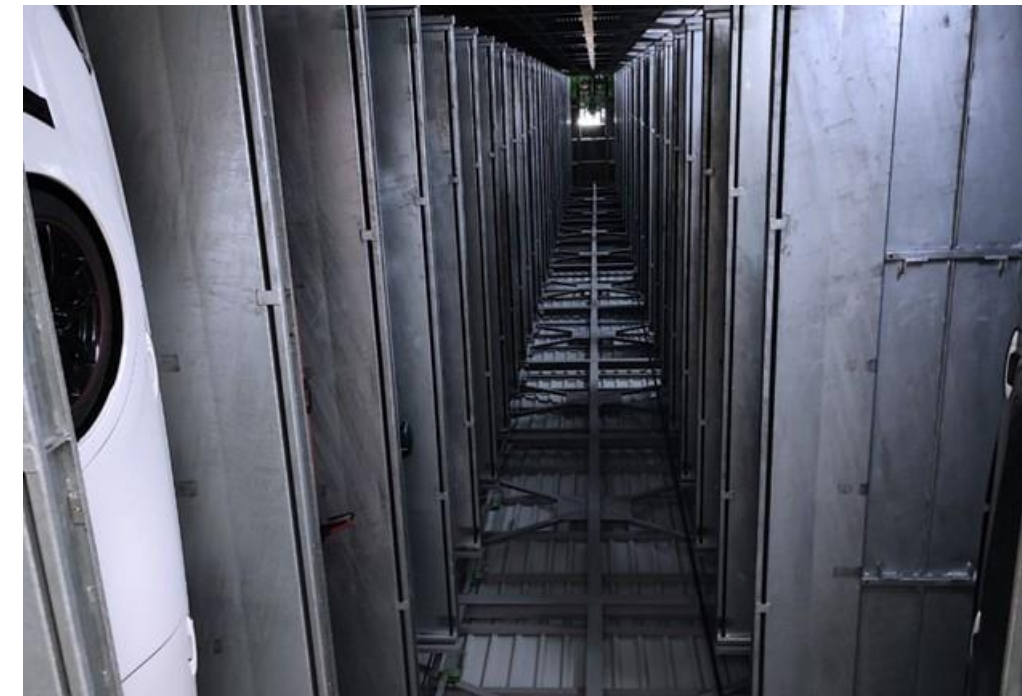


COMPLETED PROJECT

- Somerset Ekkamai
- Runesu Thonglor 5
- The FINE Bangkok
- Metris Ladprao
- Four Points by Sheraton
- Solaria Hotel
- Neil's Tavern
- Central Chidlom
- BDMS Udon Thani

ON GOING PROJECT

- Siamese Landmark at Grand Station B
- SLC Hospital
- AGV Project



PARKING FACILITIES

: (*PARK PRO VISION*)



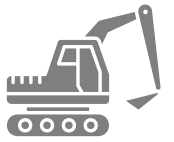
COMPLETED PROJECT

- Interchange Tower, Asoke
- Kronos, Sathon
- Charn Issara I, Rama 4
- Charn Issara II, Phetchaburi Rd
- Sermmit Tower, Asoke
- Thung Song Hong
- Shama Lakeview, Asoke
- Ramaland, Rama 4
- Liberty Square, Silom
- Vanit Place, Phetchaburi Rd
- Bio house, Sukhumvit 39



CONSTRUCTION

: INSTALLATION AND RENOVATION



CUSTOMER

- Denko Engineering
- Nippon Parking Development (Thailand)
- DAI-DAN (Thailand)
- NX Shoji (Thailand)
- Hiroki Corporation
- Sumitronics (Thailand)
- Siamese Asset Public
- SA Future Property
- Grand Suites (Thailand)



MAINTENANCE

: TECHNICAL AND SUPPORT

STANDARD
PREVENTIVE
MAINTENANCE

MONTHLY

SUPPORT
ON SITE

**IN
1 HOUR**

AVERAGE

STANDBY

**24
HRS.**

ONLINE & ONSITE (IF NEED)

PL INSURANCE

**20
MB / Y.**

SOFTWARE
DEVELOP

**FREE
TRAINING**
For Use

Installation Maintenance and R&D team is under PTA Thai staff.
15 Thai persons | 2 Japanese specialist

PRO TECH ASIA

CONTACT US

SALES



+66 2 671 2145



sales@protechasia.co.th



<https://www.pro-tech-asia.com/>



Pro Tech Asia



115 Rimthangrotfaisaipaknum
Rd. Khlongtoei bkk 10110