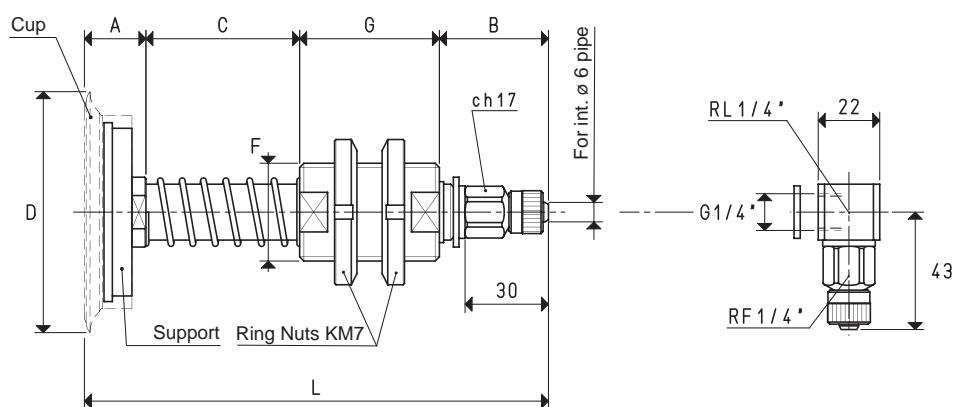
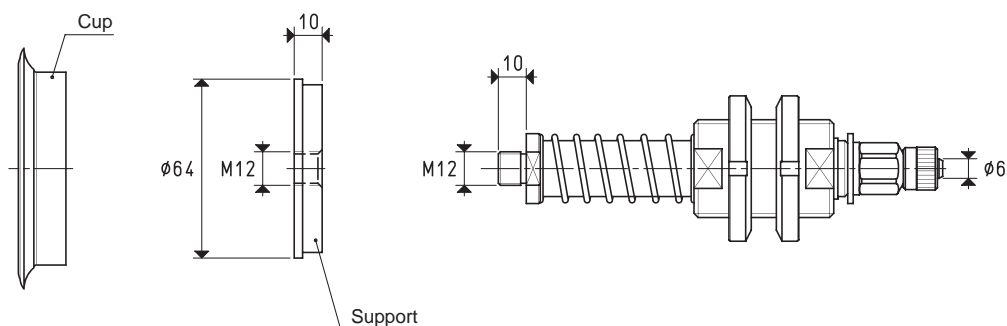


100

- For height C= 55 mm 37 mm
- For height C= 110 mm 84 mm



VERSION 06 85 15 L

$C = 110 \text{ mm}$

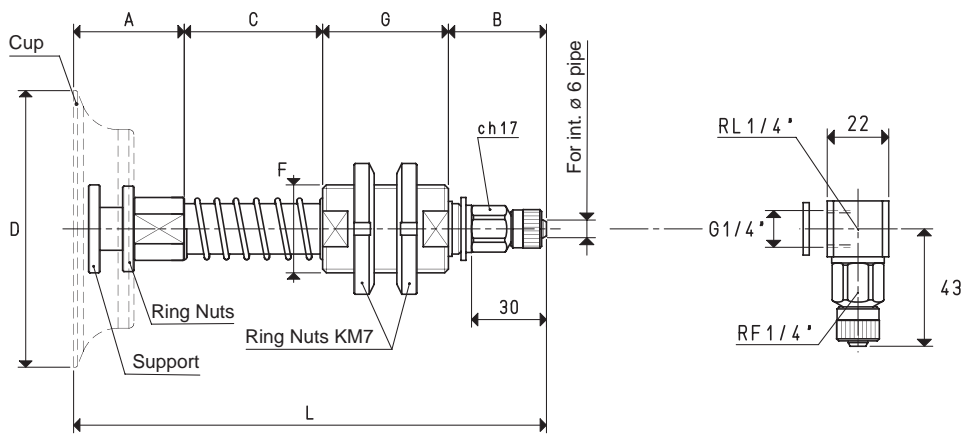
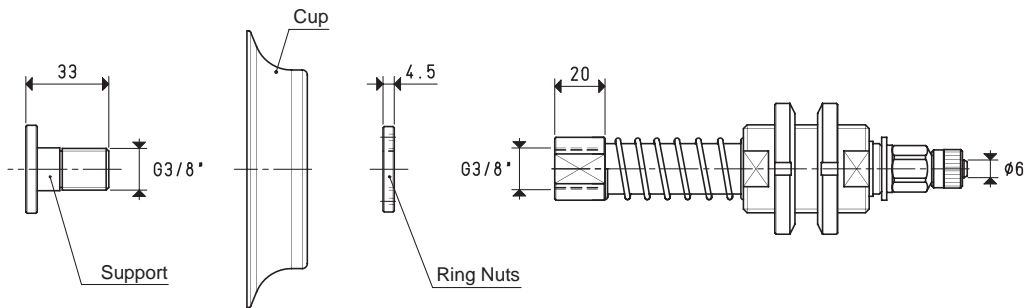
* Also available with height C of 110 mm

Conversion ratio: $\text{inch} = \frac{\text{mm}}{25.4}$; $\text{pounds} = \frac{\text{g}}{453.6} = \frac{\text{Kg}}{0.4536}$



SPECIAL CUP HOLDERS

The actual springing stroke is:
- For height C= 55 mm 37 mm
- For height C= 110 mm 84 mm



VERSION 06 90 24

VERSION 06 90 24 L

CUP HOLDERS WITH STRAIGHT QUICK COUPLER FOR PLASTIC HOSE Ø 6 X 8												C = 110 mm	
Art.	Force Kg	A	B	*C	D Ø	F Ø	G	L	Cup art.	Support included art.	Ring nut included art.	Weight g	Weight g
06 90 24	15.89	29	39	55	90	M35 x 1.5	50	173	01 90 24	00 08 110	00 08 111	852.8	974.8

Note: Cups are not an integral part of the cup holders, therefore, they must be ordered separately.
Add the letter L to the code to order L-type fittings.

* Also available with height C of 110 mm

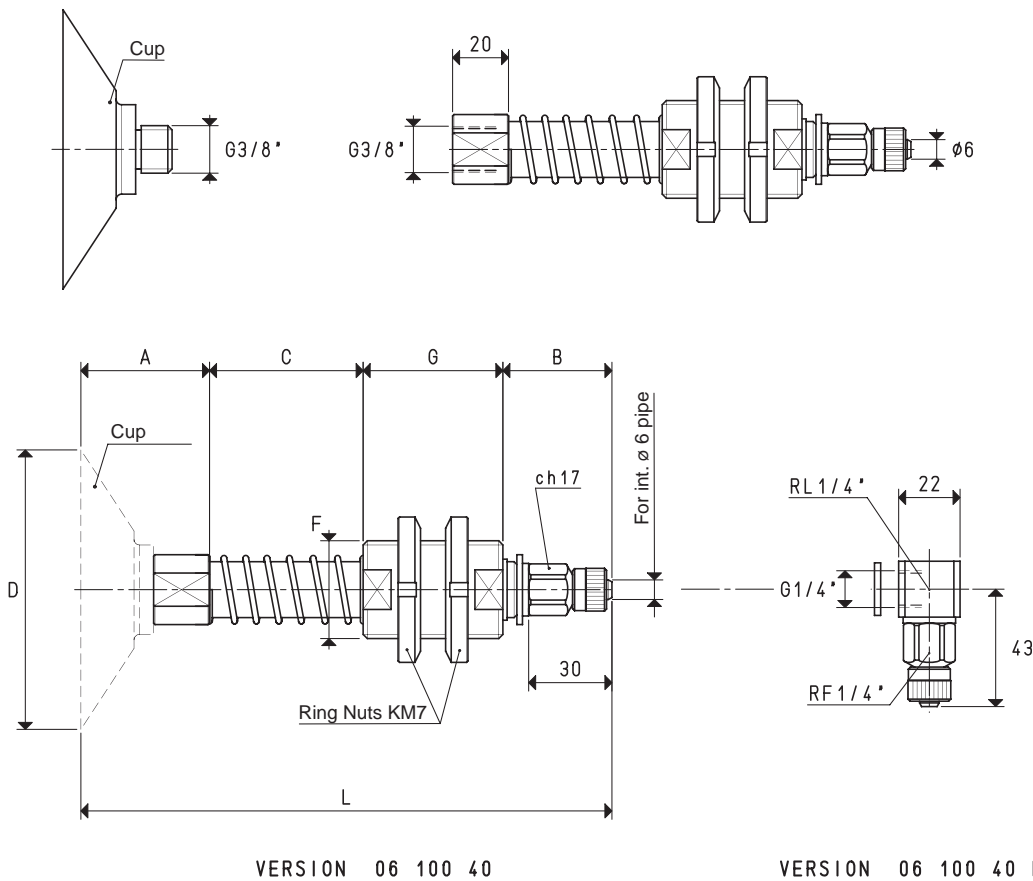
Conversion ratio: inch = mm / 25.4 ; pounds = g / 453.6 ; Kg = g / 1000

3D drawings available at www.vuototecnica.net

SPECIAL CUP HOLDERS

The actual springing stroke is:

- For height C= 55 mm 37 mm
- For height C= 110 mm 84 mm



CUP HOLDERS WITH STRAIGHT QUICK COUPLER FOR PLASTIC HOSE Ø 6 X 8										C = 110 mm	
Art.	Force Kg	A	B	*C	D Ø	F Ø	G	L	Cup art.	Weight g	Weight g
06 100 40	19.62	31	39	55	100	M35 x 1.5	50	175	08 100 40	736	858

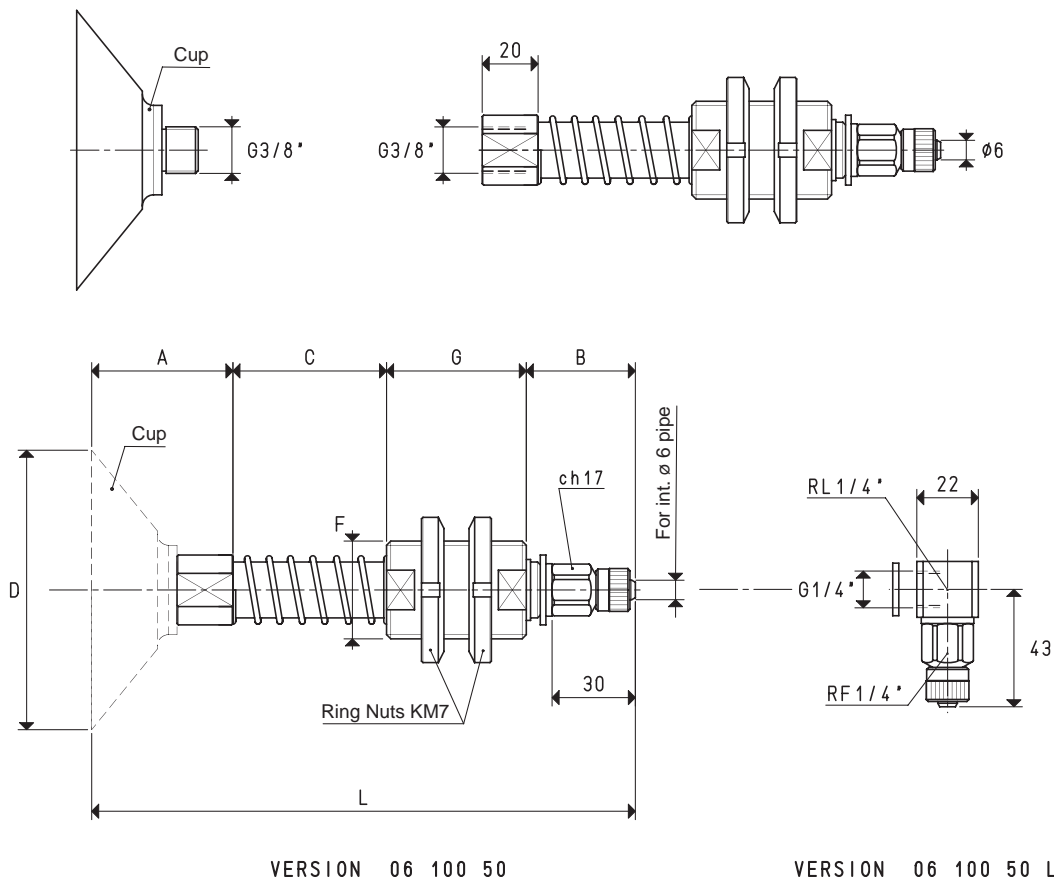
Note: Cups are not an integral part of the cup holders, therefore, they must be ordered separately.
Add the letter L to the code to order L-type fittings.

* Also available with height C of 110 mm



SPECIAL CUP HOLDERS

The actual springing stroke is:
- For height C= 55 mm 37 mm
- For height C= 110 mm 84 mm



VERSION 06 100 50

VERSION 06 100 50 L

CUP HOLDERS WITH STRAIGHT QUICK COUPLER FOR PLASTIC HOSE Ø 6 X 8										C = 110 mm	
Art.	Force Kg	A	B	*C	D Ø	F Ø	G	L	Cup art.	Weight g	Weight g
06 100 50	19.62	35.5	39	55	100	M35 x 1.5	50	179.5	08 100 50	732	854

Note: Cups are not an integral part of the cup holders, therefore, they must be ordered separately.
Add the letter L to the code to order L-type fittings.

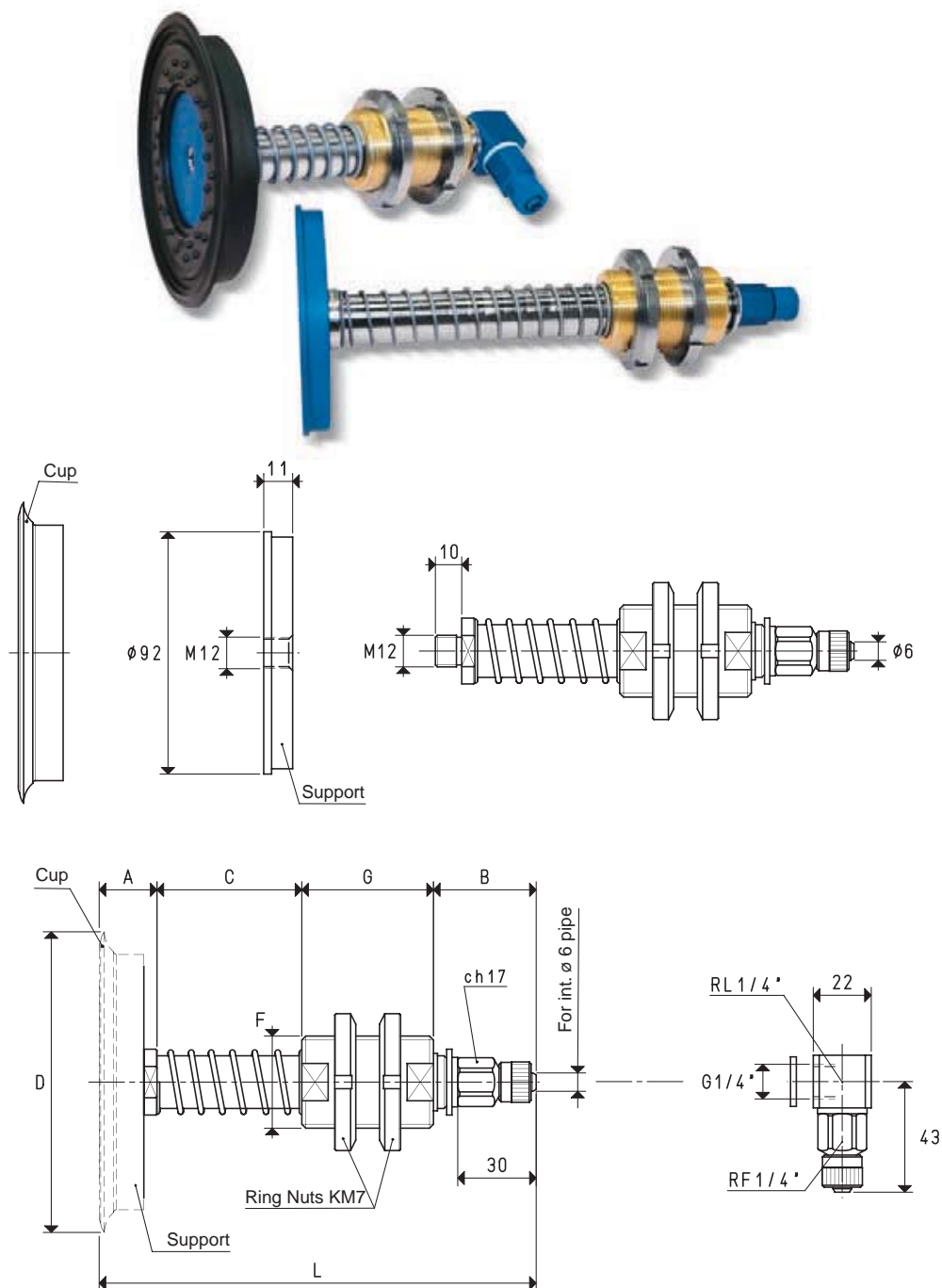
* Also available with height C of 110 mm

3D drawings available at www.vuototecnica.net

SPECIAL CUP HOLDERS

The actual springing stroke is:

- For height C= 55 mm 37 mm
- For height C= 110 mm 84 mm



VERSION 06 110 10

VERSION 06 110 10 L

CUP HOLDERS WITH STRAIGHT QUICK COUPLER FOR PLASTIC HOSE Ø 6 X 8

C = 110 mm

Art.	Force Kg	A	B	*C	D Ø	F Ø	G	L	Cup art.	Support included art.	Weight g	Weight g
06 110 10	23.74	22	39	55	114	M35 x 1.5	50	166	01 110 10	00 08 33	912.3	1034.3

Note: Cups are not an integral part of the cup holders, therefore, they must be ordered separately.

Add the letter L to the code to order L-type fittings.

* Also available with height C of 110 mm

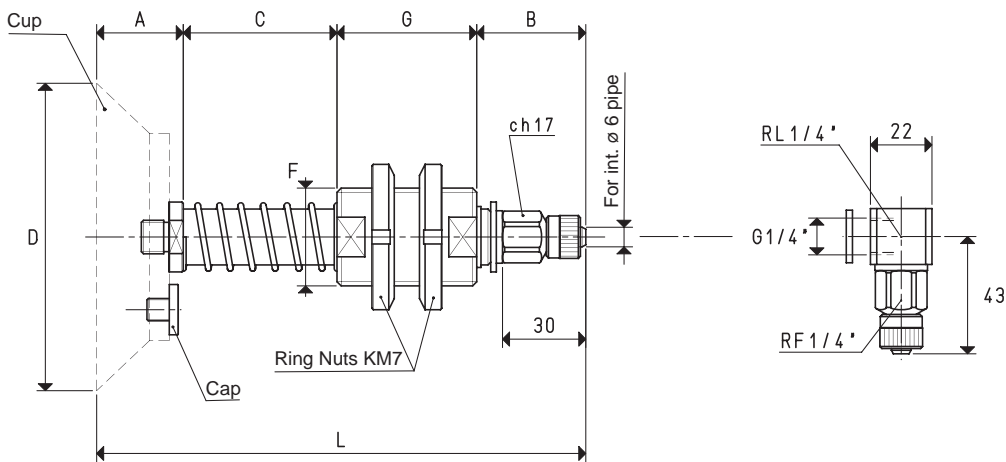
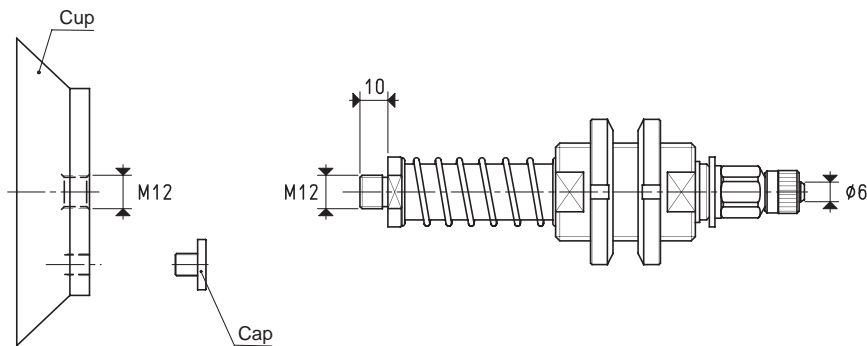
2.108

Conversion ratio: $\text{inch} = \frac{\text{mm}}{25.4}$; $\text{pounds} = \frac{\text{g}}{453.6} = \frac{\text{Kg}}{0.4536}$



SPECIAL CUP HOLDERS

The actual springing stroke is:
- For height C= 55 mm 37 mm
- For height C= 110 mm 84 mm



VERSION 06 110 15

VERSION 06 110 15 L

CUP HOLDERS WITH STRAIGHT QUICK COUPLER FOR PLASTIC HOSE Ø 6 X 8

Art.	Force Kg	A	B	*C	D Ø	F Ø	G	L	Cup art.	Cap included art.	C = 110 mm	
											Weight g	Weight g
06 110 15	23.74	31	39	55	110	M35 x 1.5	50	175	08 110 15	00 11 06	980	1100

Note: Cups are not an integral part of the cup holders, therefore, they must be ordered separately.
Add the letter L to the code to order L-type fittings.

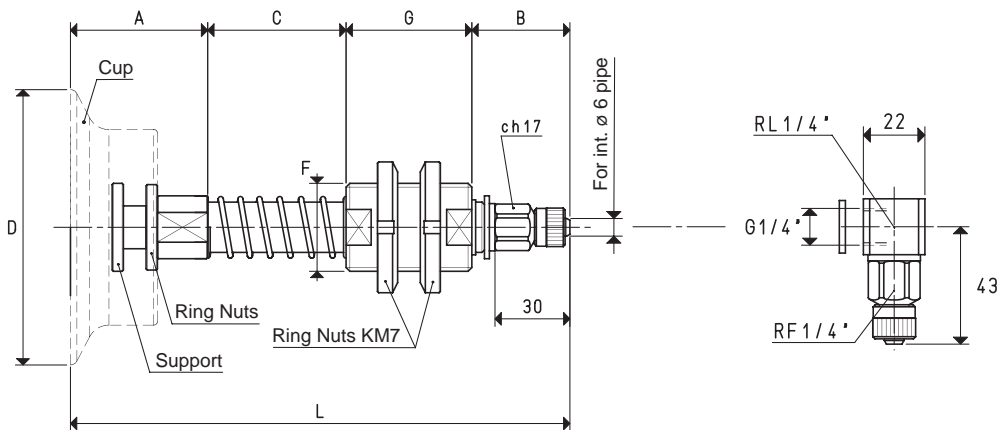
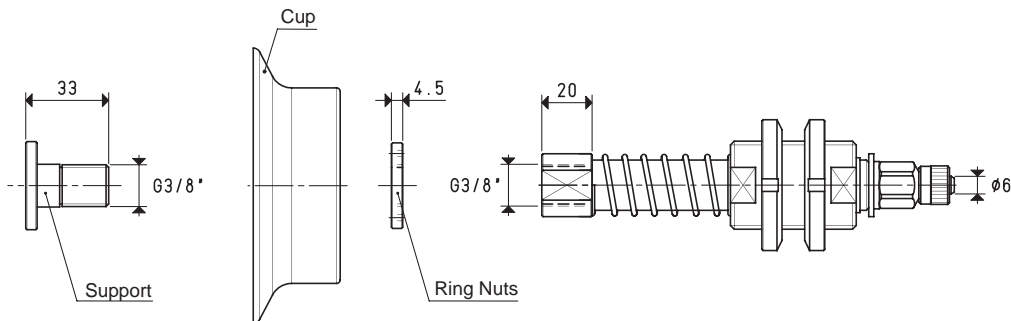
* Also available with height C of 110 mm

3D drawings available at www.vuototecnica.net

SPECIAL CUP HOLDERS

The actual springing stroke is:

- For height C= 55 mm 37 mm
- For height C= 110 mm 84 mm



VERSION 06 110 24

VERSION 06 110 24 L

CUP HOLDERS WITH STRAIGHT QUICK COUPLER FOR PLASTIC HOSE Ø 6 X 8

C = 110 mm

Art.	Force Kg	A	B	*C	D Ø	F Ø	G	L	Cup art.	Support included art.	Ring nut included art.	Weight Kg	Weight Kg
06 110 24	23.74	29	39	55	110	M35 x 1.5	50	173	01 110 24	00 08 110	00 08 111	1.07	1.19

Note: Cups are not an integral part of the cup holders, therefore, they must be ordered separately.
Add the letter L to the code to order L-type fittings.

* Also available with height C of 110 mm

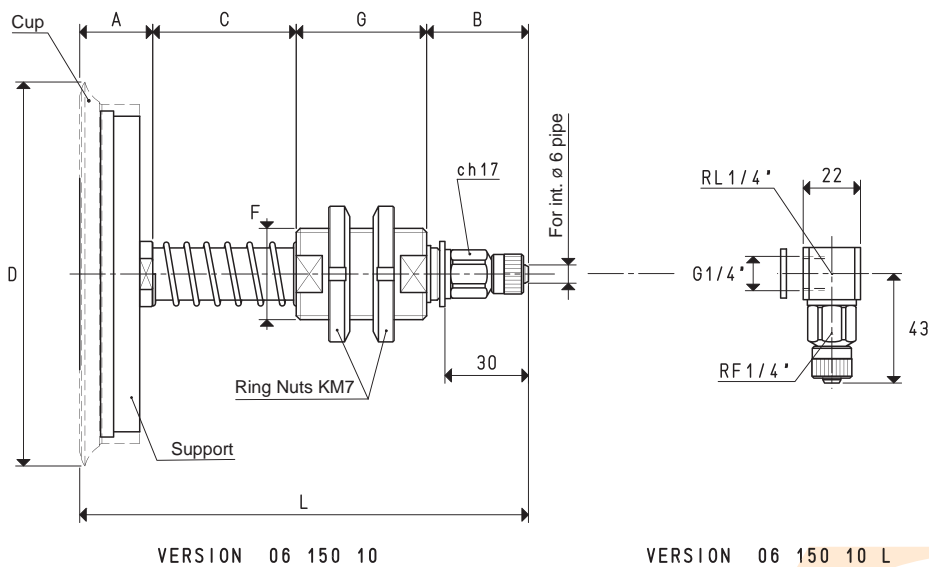
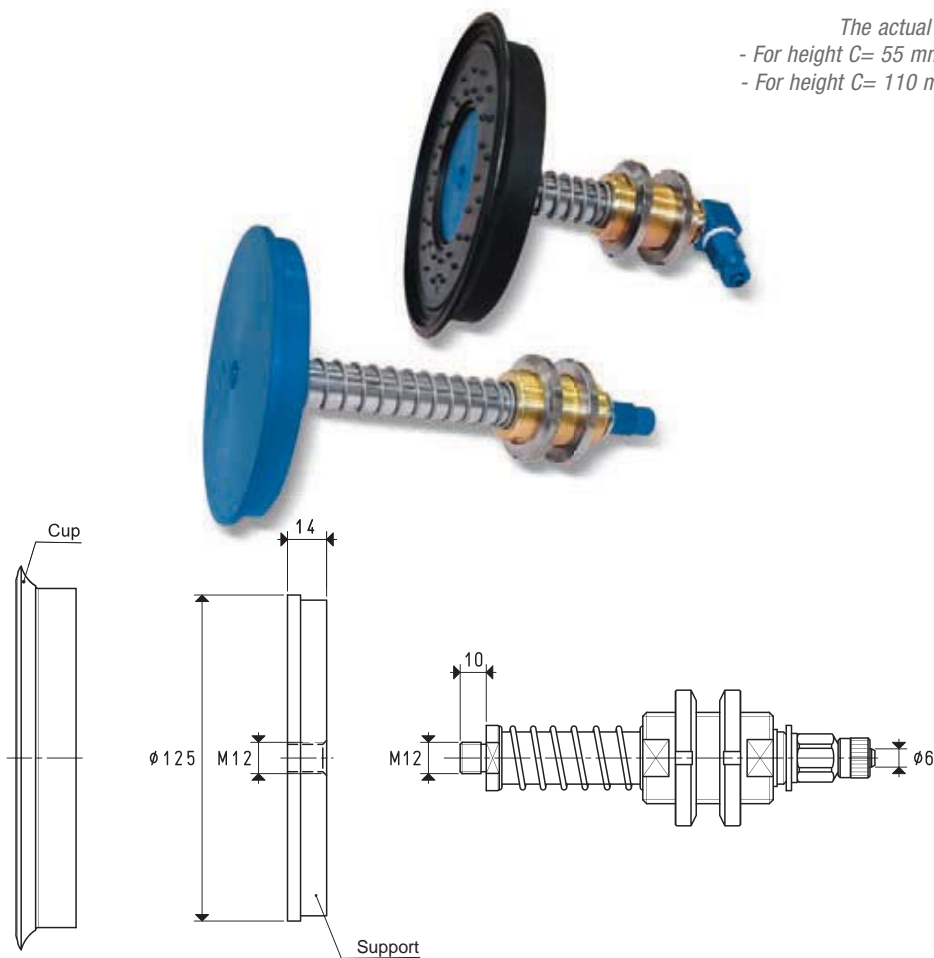
2.110

Conversion ratio: inch = mm / 25.4 ; pounds = g / 453.6 = Kg / 0.4536



SPECIAL CUP HOLDERS

The actual springing stroke is:
- For height C= 55 mm 37 mm
- For height C= 110 mm 84 mm



CUP HOLDERS WITH STRAIGHT QUICK COUPLER FOR PLASTIC HOSE Ø 6 X 8

Art.	Force Kg	A	B	*C	D Ø	F Ø	G	L	Cup art.	Support included art.	C = 110 mm	
											Weight Kg	Weight Kg
06 150 10	45.00	28	39	55	154	M35 x 1.5	50	172	01 150 10	00 08 35	1.32	1.45

Note: Cups are not an integral part of the cup holders, therefore, they must be ordered separately.
Add the letter L to the code to order L-type fittings.

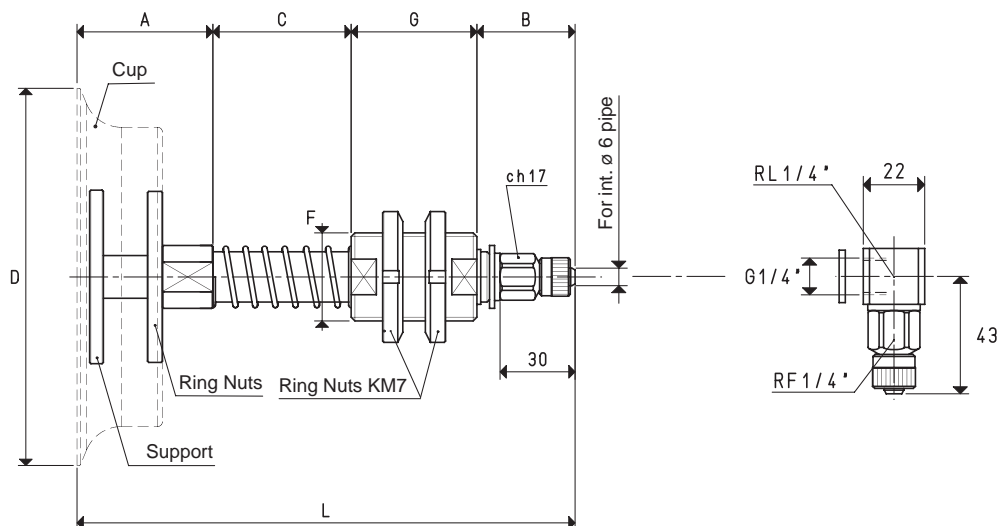
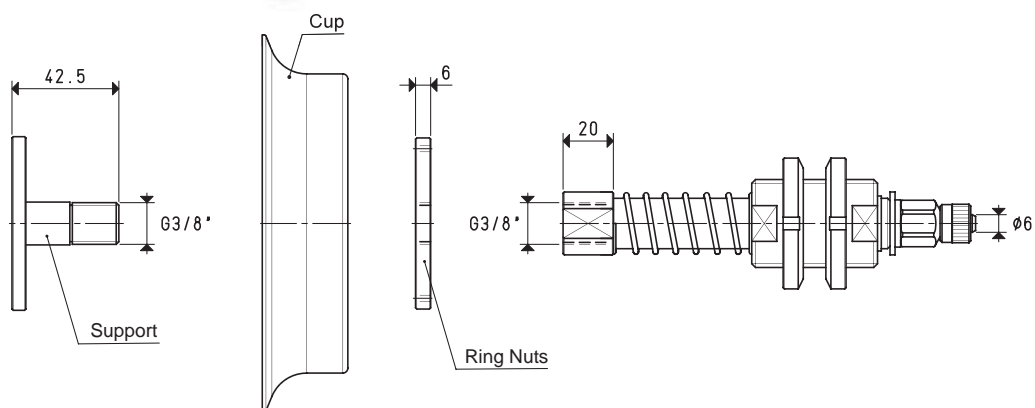
* Also available with height C of 110 mm

3D drawings available at www.vuototecnica.net

Conversion ratio: inch = $\frac{\text{mm}}{25.4}$; pounds = $\frac{\text{g}}{453.6}$ = $\frac{\text{Kg}}{0.4536}$

100%

- For height C= 55 mm 37 mm
- For height C= 110 mm 84 mm



VERSION 06 150 36 L

C = 110 mm

Art.	Force Kg	A	B	*C	D Ø	F Ø	G	L	Cup art.	Support included art.	Ring nut included art.	Weight Kg	Weight Kg
06 150 36	45.00	41	39	55	150	M35 x 1.5	50	185	01 150 36	00 08 112	00 08 113	1.39	1.52

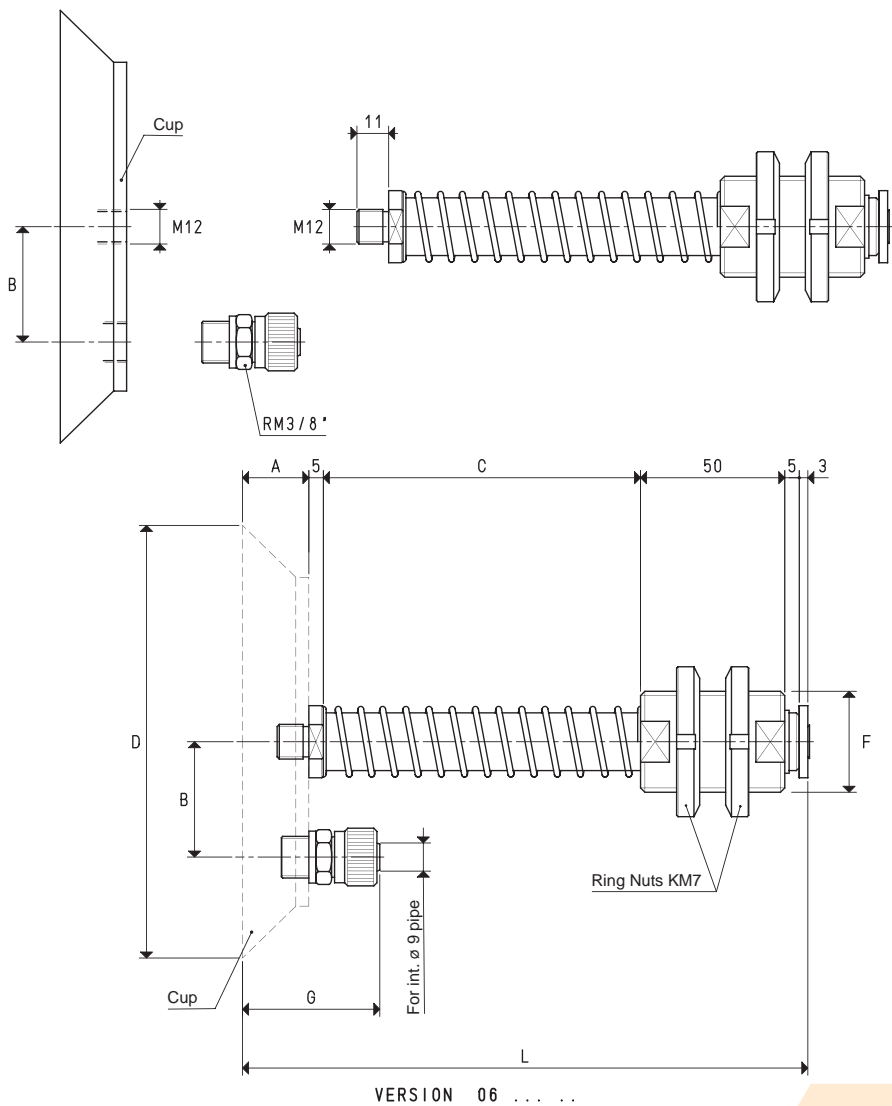
* Also available with height C of 110 mm

Conversion ratio: $\text{inch} = \frac{\text{mm}}{25.4}$; $\text{pounds} = \frac{\text{g}}{453.6} = \frac{\text{Kg}}{0.4536}$



SPECIAL CUP HOLDERS

The actual springing stroke is:
- For height C= 55 mm 37 mm
- For height C= 110 mm 84 mm



CUP HOLDERS WITH STRAIGHT QUICK COUPLER FOR PLASTIC HOSE Ø 9 X 12										C = 110 mm	
Art.	Force Kg	A	B	*C	D Ø	F Ø	G	L	Cup art.	Weight Kg	Weight Kg
06 150 15	45.00	26	40.0	55	150	M35 x 1.5	50	144	08 150 15	1.51	1.64
06 200 10	78.50	28	47.5	55	200	M35 x 1.5	52	146	08 200 10	2.42	2.54
06 250 10	122.60	28	72.5	55	250	M35 x 1.5	52	146	08 250 10	3.68	3.80

Note: Cups are not an integral part of the cup holders, therefore, they must be ordered separately.

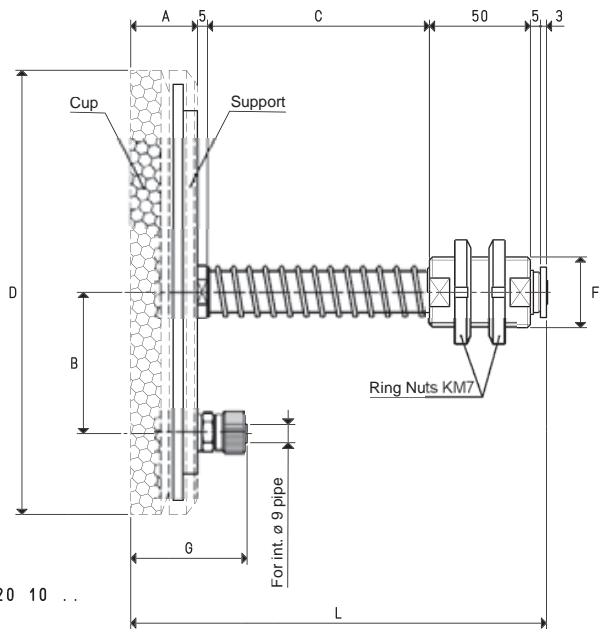
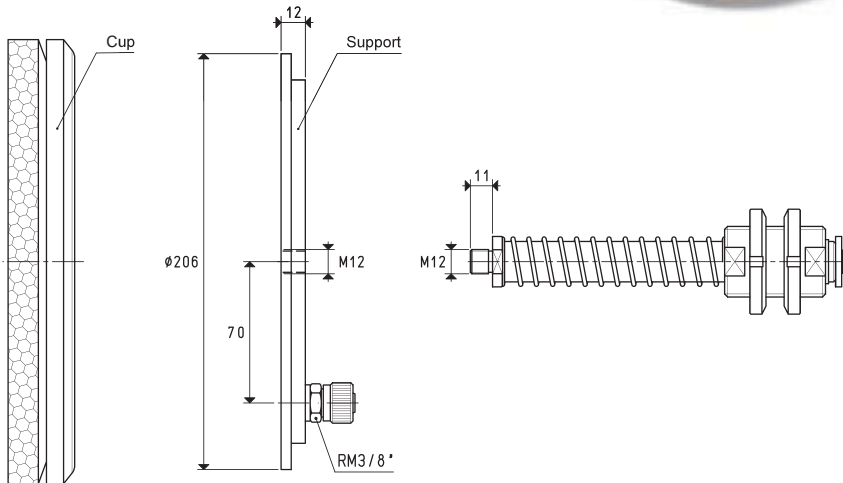
* Also available with height C of 110 mm

3D drawings available at www.vuototecnica.net

Conversion ratio: inch = $\frac{\text{mm}}{25.4}$; pounds = $\frac{\text{g}}{453.6}$ = $\frac{\text{Kg}}{0.4536}$

SPECIAL CUP HOLDERS

The actual springing stroke is:
- For height C= 55 mm 37 mm
- For height C= 110 mm 84 mm



CUP HOLDERS WITH STRAIGHT QUICK COUPLER FOR PLASTIC HOSE Ø 9 X 12											C = 110 mm	
Art.	Force Kg	A	B	*C	D Ø	F Ø	G	L	Cup art.	Support included art.	Weight Kg	Weight Kg
06 220 10 OF	63.6	35	70	55	220	M35 x 1.5	61	153	01 220 10 OF	00 08 37	1.87	1.99
06 220 10 NF	63.6	35	70	55	220	M35 x 1.5	61	153	01 220 10 NF	00 08 37	1.86	1.98

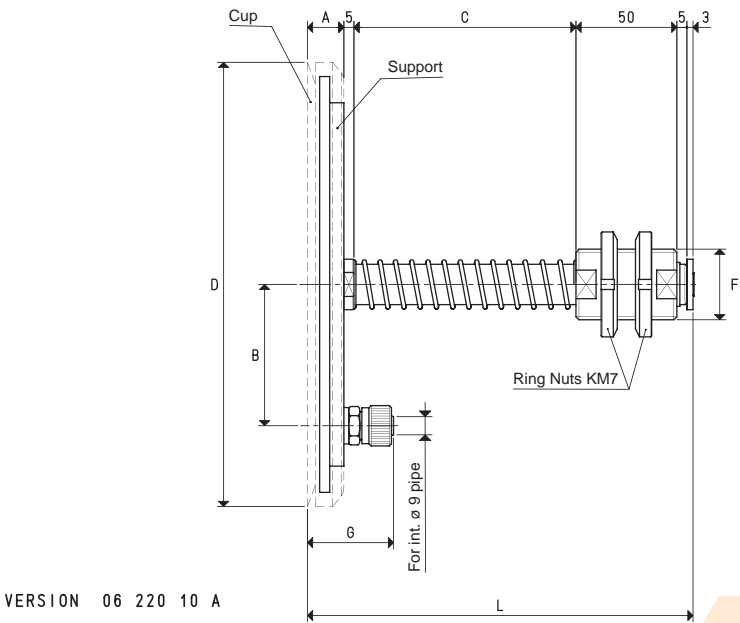
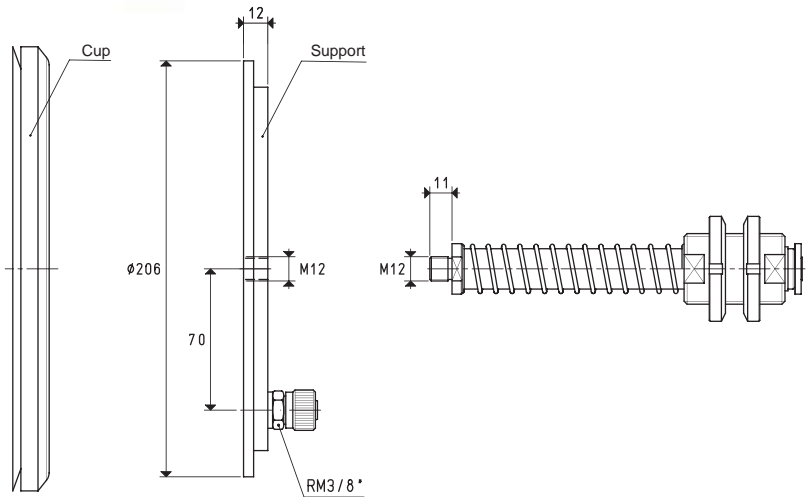
Note: Cups are not an integral part of the cup holders, therefore, they must be ordered separately.

* Also available with height C of 110 mm

3D drawings available at www.vuototecnica.net

SPECIAL CUP HOLDERS

The actual springing stroke is:
- For height C= 55 mm 37 mm
- For height C= 110 mm 84 mm



CUP HOLDERS WITH STRAIGHT QUICK COUPLER FOR PLASTIC HOSE Ø 9 X 12										C = 110 mm		
Art.	Force Kg	A	B	*C	D Ø	F Ø	G	L	Cup art.	Support included art.	Weight Kg	Weight Kg
06 220 10 A	78.5	20	70	55	220	M35 x 1.5	44	138	01 220 10 A	00 08 37	1.81	1.94

Note: Cups are not an integral part of the cup holders, therefore, they must be ordered separately.

* Also available with height C of 110 mm

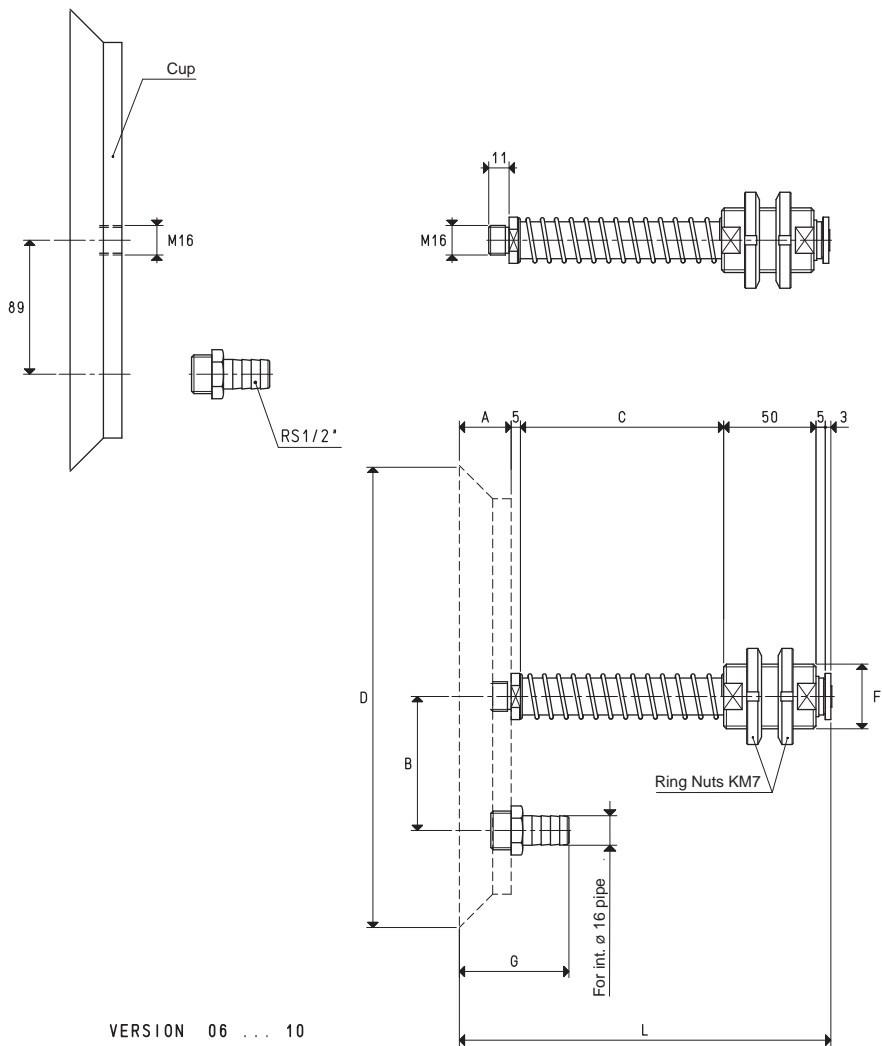
3D drawings available at www.vuototecnica.net

Conversion ratio: inch = $\frac{\text{mm}}{25.4}$; pounds = $\frac{\text{g}}{453.6}$ = $\frac{\text{Kg}}{0.4536}$



SPECIAL CUP HOLDERS

The actual springing stroke is:
- For height C= 55 mm 37 mm
- For height C= 110 mm 84 mm



CUP HOLDERS WITH HOSE-END FITTING FOR PLASTIC HOSE Ø 16 X 18										C = 110 mm	
Art.	Force Kg	A	B	*C	D Ø	F Ø	G	L	Cup art.	Weight Kg	Weight Kg
06 300 10	176.6	31	89	55	300	M35 x 1.5	61	149	08 300 10	5.42	5.56
06 350 10	240.0	31	89	55	350	M35 x 1.5	61	149	08 350 10	7.30	7.43

Note: Cups are not an integral part of the cup holders, therefore, they must be ordered seperately.

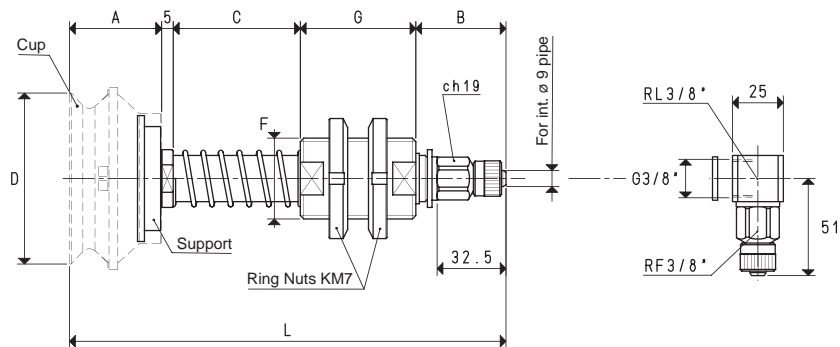
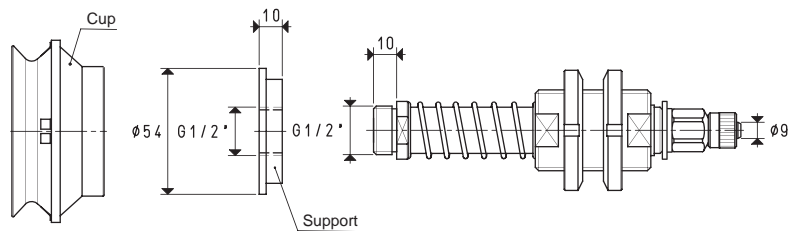
* Also available with height C of 110 mm

2.116

Conversion ratio: inch = $\frac{\text{mm}}{25.4}$; pounds = $\frac{\text{g}}{453.6} = \frac{\text{Kg}}{0.4536}$



- For height C= 55 mm	37 mm
- For height C= 110 mm	84 mm



VERSION 06 75 42 L

$C = 110 \text{ mm}$

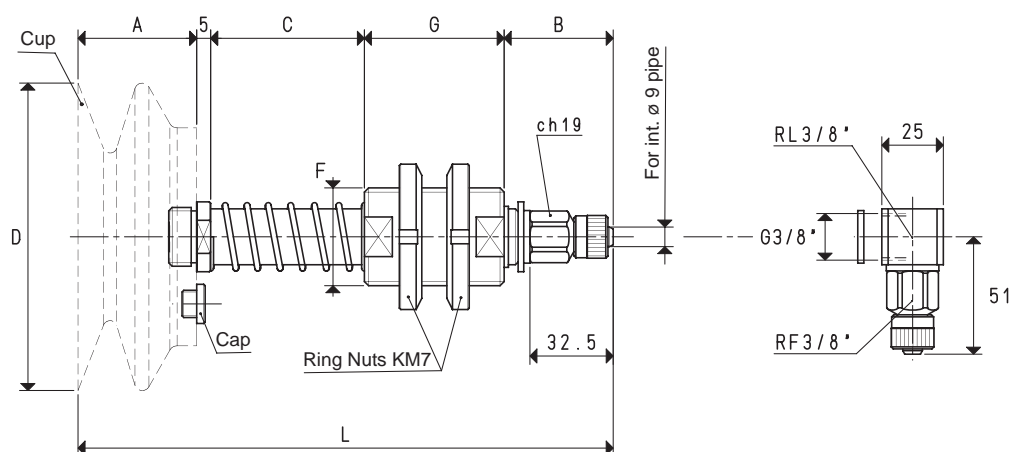
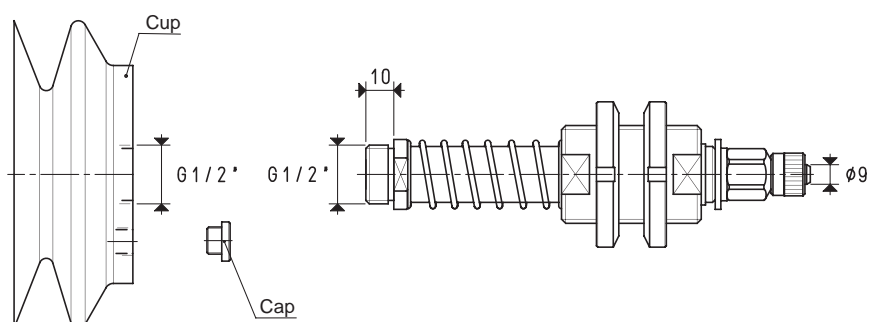
Note: Cups are not an integral part of the cup holders, therefore, they must be ordered separately.
Add the letter L to the code to order L-type fittings.

Conversion ratio: inch = $\frac{\text{mm}}{25.4}$; pounds = $\frac{\text{g}}{453.6} = \frac{\text{Kg}}{0.4536}$

SPECIAL CUP HOLDERS FOR BELLOW CUPS

The actual springing stroke is:

- For height C= 55 mm 37 mm
- For height C= 110 mm 84 mm



VERSION 06 ... 30

VERSION 06 ... 30 L

CUP HOLDERS WITH STRAIGHT QUICK COUPLER FOR PLASTIC HOSE Ø 9 X 12

Art.	Force Kg	A	B	*C	D Ø	F Ø	G	L	Cup art.	Cap included art.	Weight Kg	Weight Kg
06 110 30	23.74	45	45	55	110	M35 x 1.5	50	200	08 110 30	00 11 44	0.97	1.08
06 150 30	45.00	60	45	55	150	M35 x 1.5	50	215	08 150 30	00 11 44	1.09	1.20
06 180 30	63.50	70	45	55	180	M35 x 1.5	50	225	08 180 30	00 11 44	1.45	1.56

Note: Cups are not an integral part of the cup holders, therefore, they must be ordered separately.

Add the letter L to the code to order L-type fittings.

* Also available with height C of 110 mm

2.118

Conversion ratio: inch = $\frac{\text{mm}}{25.4}$; pounds = $\frac{\text{g}}{453.6}$ = 0.4536

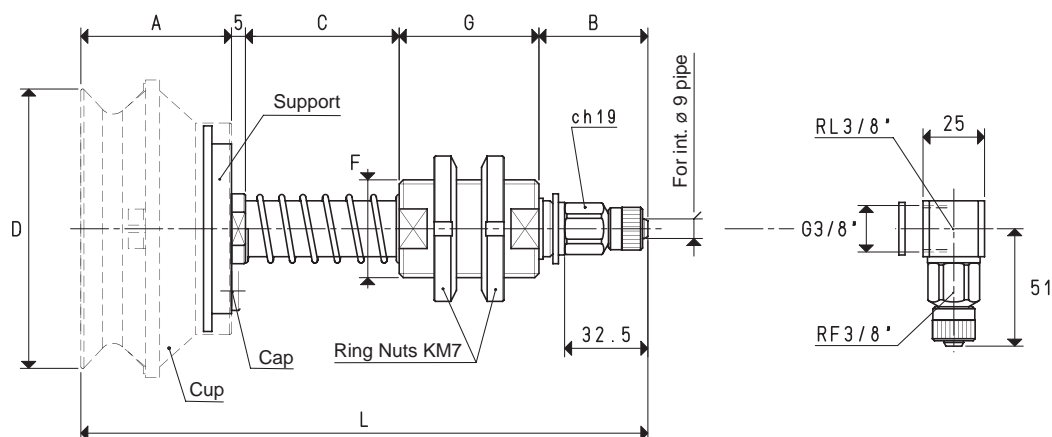
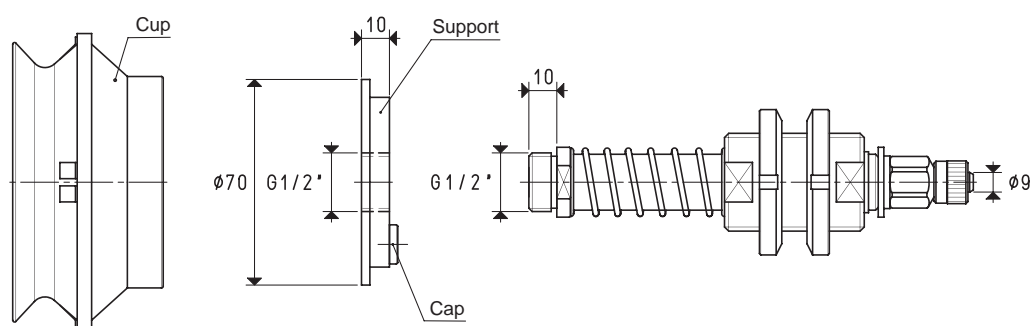


2



SPECIAL CUP HOLDERS FOR BELLOW CUPS

The actual springing stroke is:
 - For height C= 55 mm 37 mm
 - For height C= 110 mm 84 mm



VERSION 06 110 58

VERSION 06 110 58 L

CUP HOLDERS WITH STRAIGHT QUICK COUPLER FOR PLASTIC HOSE Ø 9 X 12

Art.	Force Kg	A	B	*C	D Ø	F Ø	G	L	Cup art.	Support included art.	Cap included art.	C = 110 mm	
												Weight Kg	Weight Kg
06 110 58	23.74	58	45	55	110	M35 x 1.5	50	213	01 110 58	00 08 162	00 11 44	0.93	1.04

Note: Cups are not an integral part of the cup holders, therefore, they must be ordered separately.

Add the letter L to the code to order L-type fittings.

* Also available with height C of 110 mm

3D drawings available at www.vuototecnica.net

Conversion ratio: inch = $\frac{\text{mm}}{25.4}$; pounds = $\frac{\text{g}}{453.6}$ = $\frac{\text{Kg}}{0.4536}$



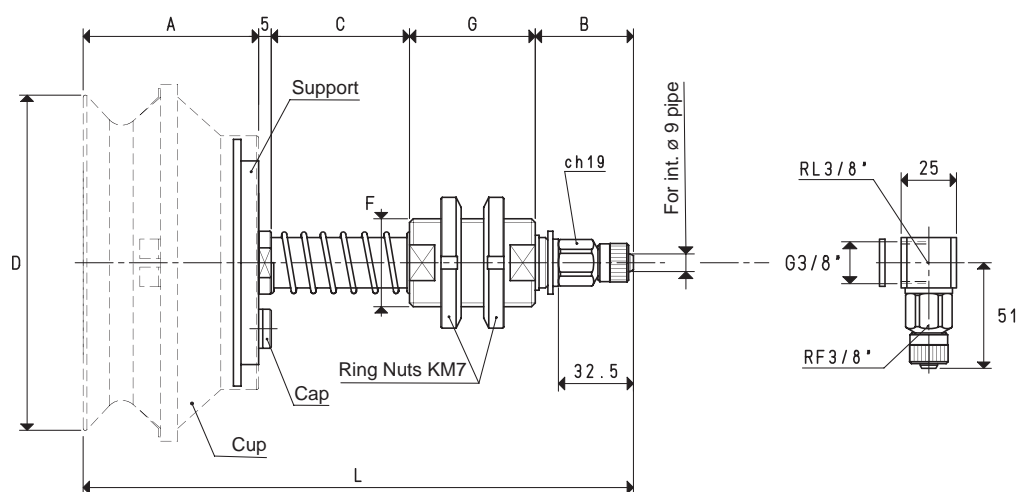
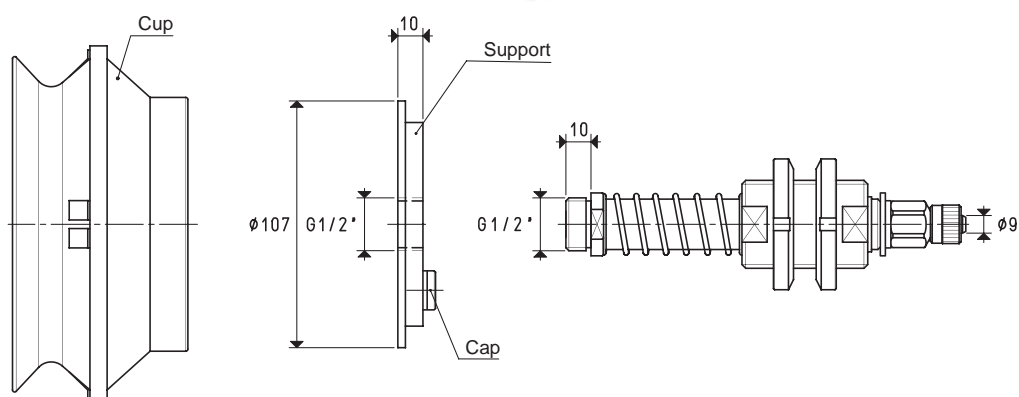
2



SPECIAL CUP HOLDERS FOR BELLOW CUPS

The actual springing stroke is:

- For height C= 55 mm 37 mm
- For height C= 110 mm 84 mm



VERSION 06 150 74

VERSION 06 1150 74 L

CUP HOLDERS WITH STRAIGHT QUICK COUPLER FOR PLASTIC HOSE Ø 9 X 12

C = 110 mm

Art.	Force Kg	A	B	*C	D Ø	F Ø	G	L	Cup art.	Support included art.	Cap included art.	Weight Kg	Weight Kg
06 150 74	45.00	74	45	55	150	M35 x 1.5	50	229	01 150 74	00 08 163	00 11 44	1.34	1.45

Note: Cups are not an integral part of the cup holders, therefore, they must be ordered separately.

Add the letter L to the code to order L-type fittings.

* Also available with height C of 110 mm

2.120

Conversion ratio: inch = $\frac{\text{mm}}{25.4}$; pounds = $\frac{\text{g}}{453.6}$ = $\frac{\text{Kg}}{0.4536}$



2

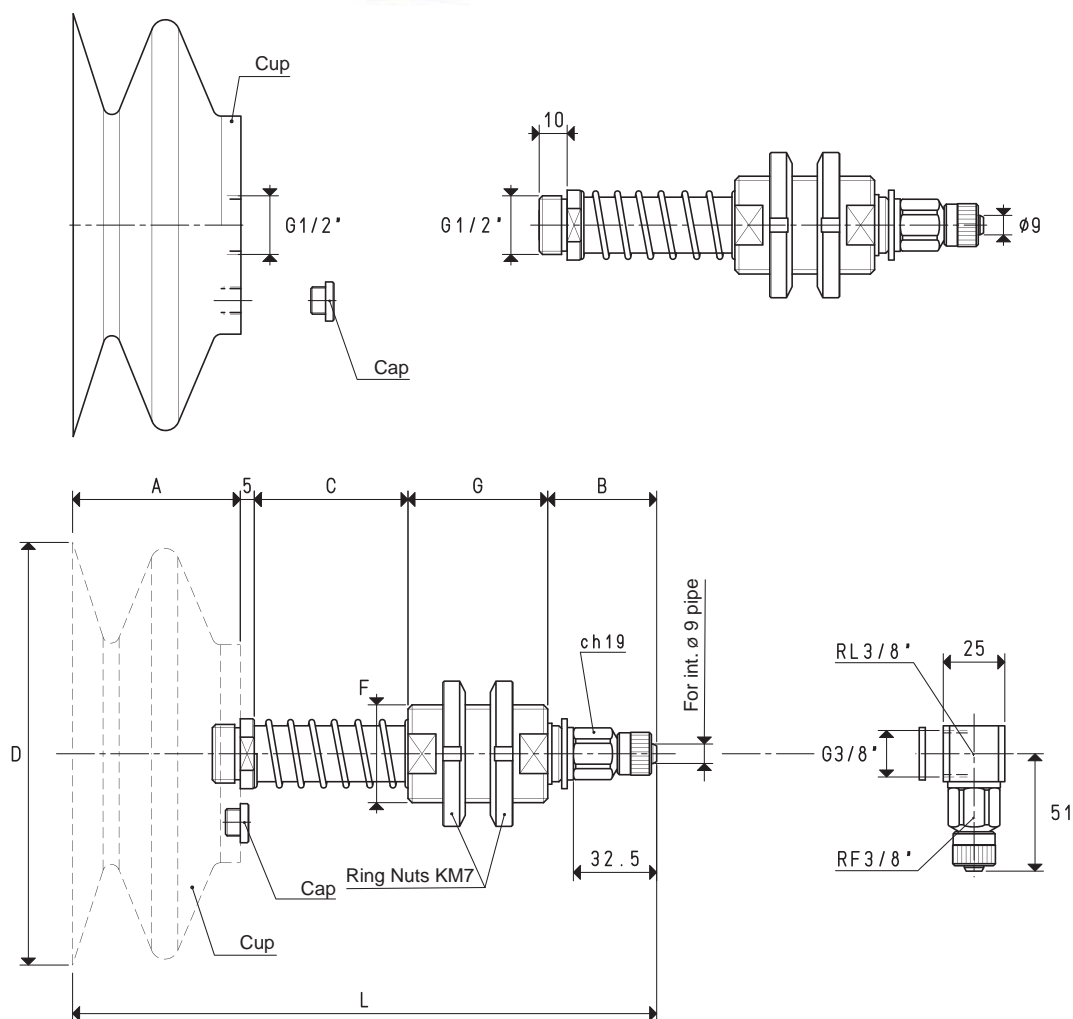


SPECIAL CUP HOLDERS FOR BELLOW CUPS



The actual springing stroke is:
 - For height C= 55 mm 37 mm
 - For height C= 110 mm 84 mm

2



VERSION 06 250 30

VERSION 06 250 30 L

CUP HOLDERS WITH STRAIGHT QUICK COUPLER FOR PLASTIC HOSE Ø 9 X 12

Art.	Force Kg	A	B	*C	D Ø	F Ø	G	L	Cup art.	Cap included art.	C = 110 mm	
											Weight Kg	Weight Kg
06 250 30	122.60	100	45	55	250	M35 x 1.5	50	255	08 250 30	00 18 33	2.20	2.31

Note: Cups are not an integral part of the cup holders, therefore, they must be ordered separately.

Add the letter L to the code to order L-type fittings.

* Also available with height C of 110 mm

Conversion ratio: inch = $\frac{\text{mm}}{25.4}$; pounds = $\frac{\text{g}}{453.6}$ = $\frac{\text{Kg}}{0.4536}$



2

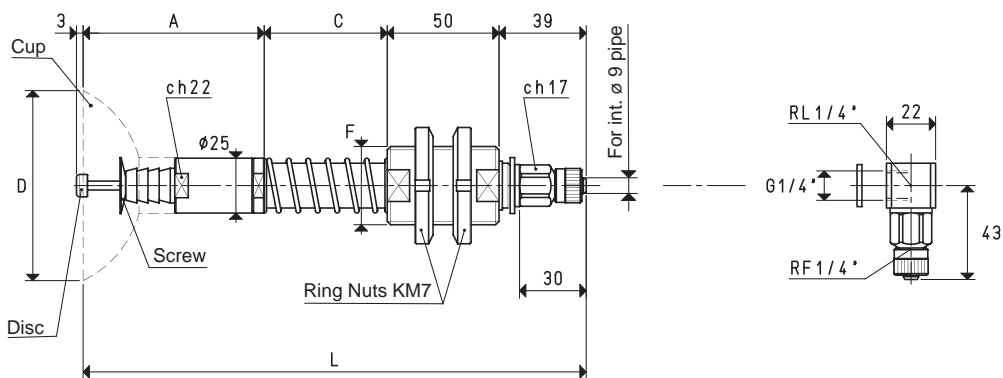


2.121

100%

The actual springing stroke is:

-



VERSION 06 85 20 L

C = 110 mm

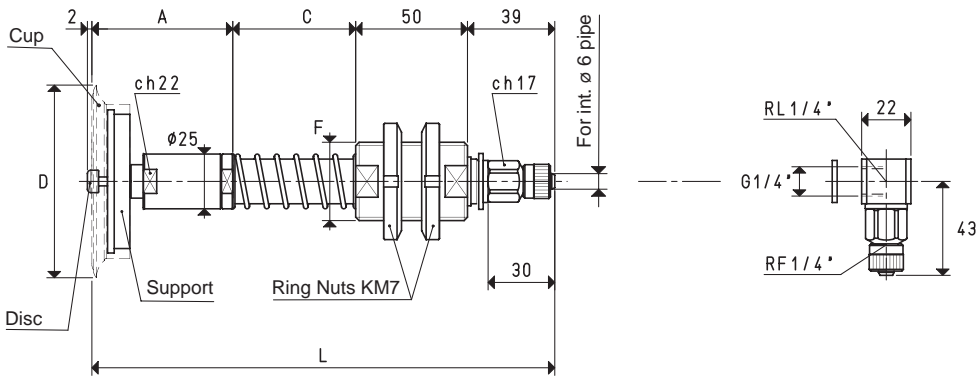
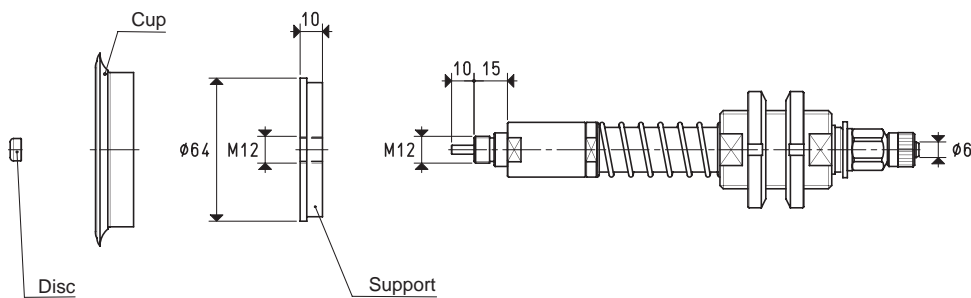
* Also available with height C of 110 mm

Conversion ratio: inch = $\frac{\text{mm}}{25.4}$; pounds = $\frac{\text{g}}{453.6} = \frac{\text{Kg}}{0.4536}$



SPECIAL CUP HOLDERS WITH PLUNGER VALVE

The actual springing stroke is:
- For height C= 55 mm 37 mm
- For height C= 110 mm 84 mm



VERSION 06 85 22

VERSION 06 85 22 L

CUP HOLDERS WITH STRAIGHT QUICK COUPLER FOR PLASTIC HOSE Ø 6 X 8										C = 110 mm	
Art.	Force Kg	A	*C	D Ø	F Ø	L	Cup art.	Support included art.	Disc included art.	Weight Kg	Weight Kg
06 85 22	14.18	65	55	85	M35 x 1.5	209	01 85 15	00 08 32	00 03 22	0.89	1.01

Note: Cups are not an integral part of the cup holders, therefore, they must be ordered separately.
Add the letter L to the code to order L-type fittings.

* Also available with height C of 110 mm

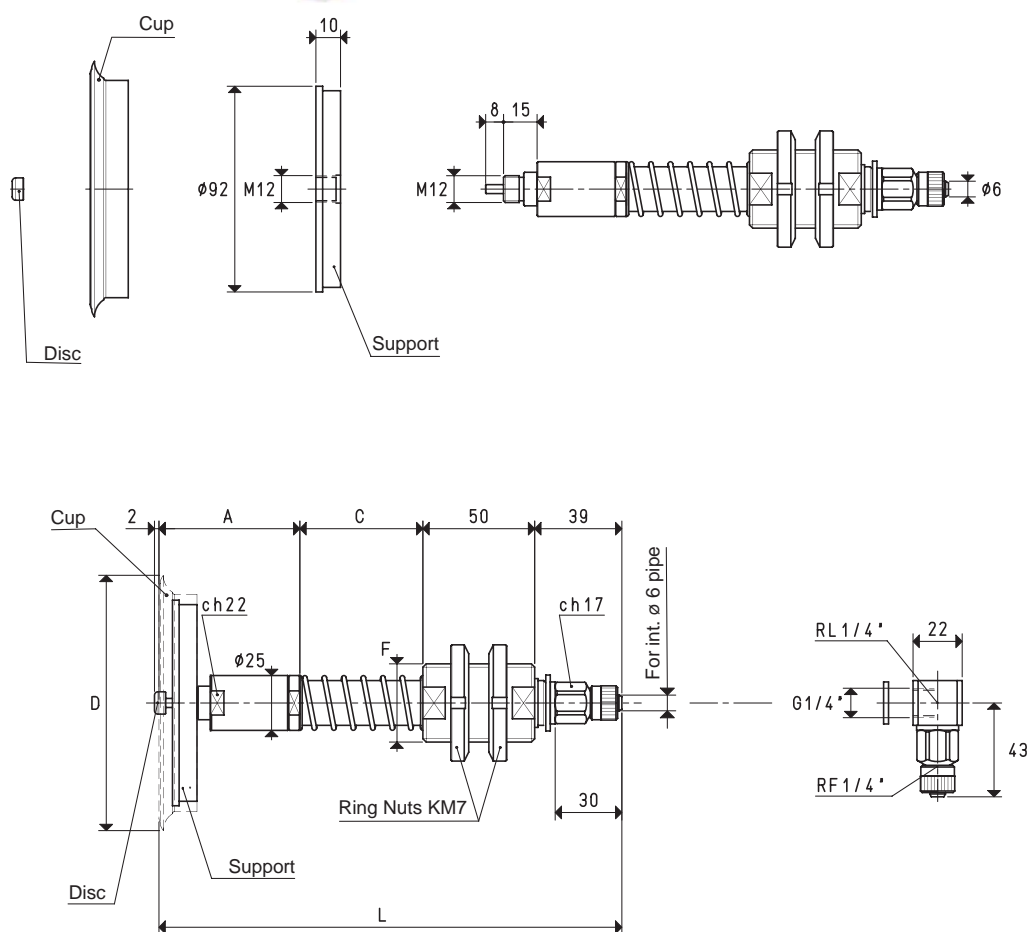
3D drawings available at www.vuototecnica.net

Conversion ratio: inch = $\frac{\text{mm}}{25.4}$; pounds = $\frac{\text{g}}{453.6}$ = $\frac{\text{Kg}}{0.4536}$

100%

- For height $C = 55$ mm
- For height $C = 110$ mm

84 mm



VERSION 06 110 20 L

$C = 110 \text{ mm}$

Note: Cups are not an integral part of the cup holders, therefore, they must be ordered separately.
Add the letter L to the code to order L-type fittings.

2.124

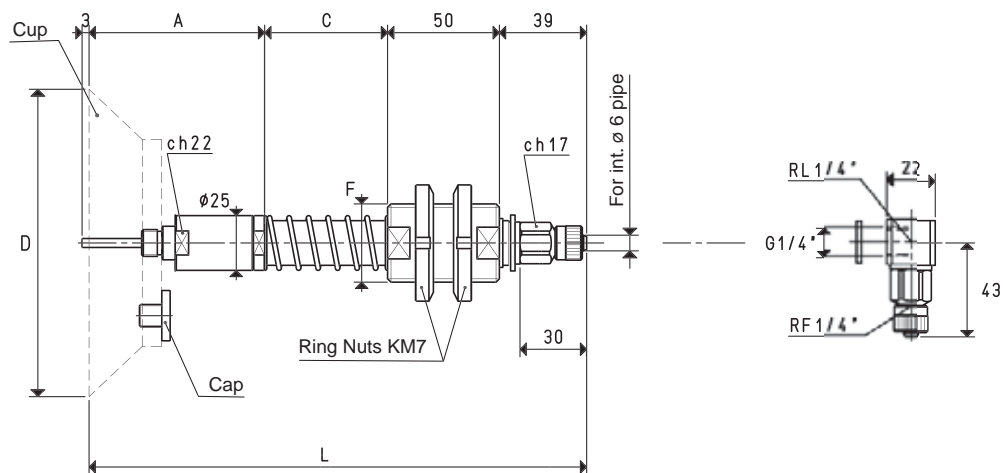
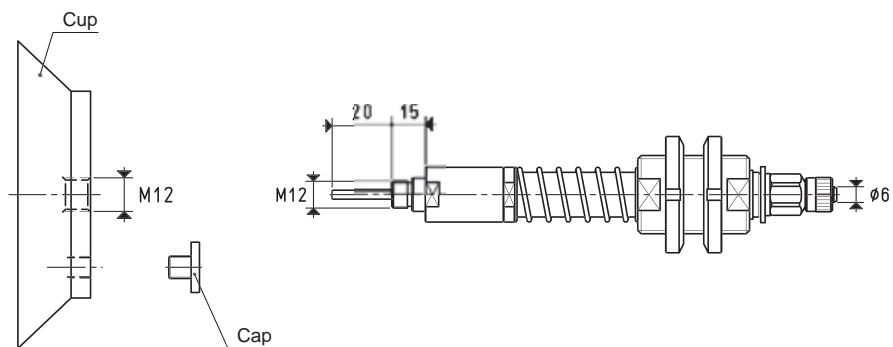
Conversion ratio: inch = $\frac{\text{mm}}{25.4}$; pounds = $\frac{\text{g}}{453.6} = \frac{\text{Kg}}{0.4536}$



SPECIAL CUP HOLDERS WITH PLUNGER VALVE

The actual springing stroke is:

- For height $C = 55 \text{ mm}$ 37 mm
- For height $C = 110 \text{ mm}$ 84 mm



VERSION 06 110 22

VERSION 06 110 22 L

CUP HOLDERS WITH STRAIGHT QUICK COUPLER FOR PLASTIC HOSE Ø 6 X 8

C = 110 mm

Art.	Force Kg	A	°C	D Ø	F	L	Cup art.	Cap included art.	Weight Kg	Weight Kg
06 110 22	23.74	74	55	110	M35 x 1.5	218	08 110 15	00 11 06	1.48	1.56

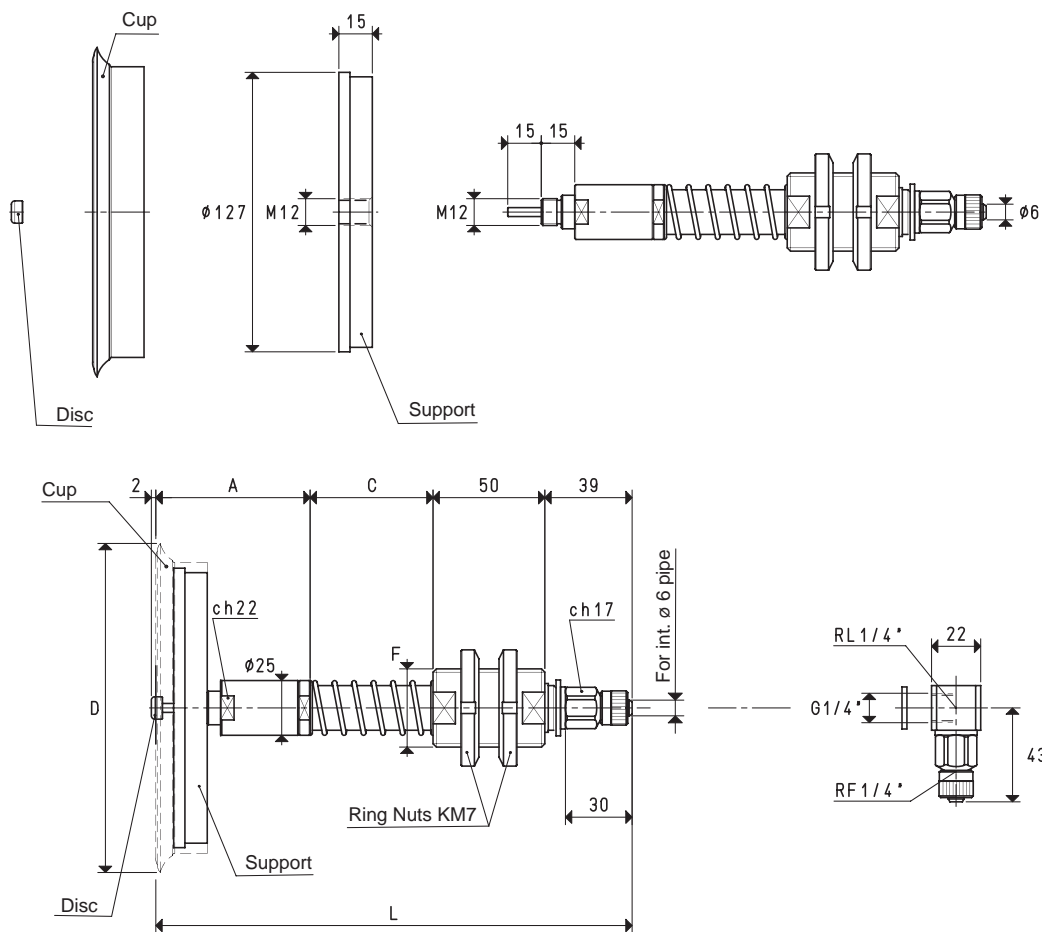
Note: Cups are not an integral part of the cup holders, therefore, they must be ordered separately.
Add the letter L to the code to order L-type fittings.

* Also available with height C of 110 mm

Conversion ratio: inch = $\frac{\text{mm}}{25.4}$; pounds = $\frac{\text{g}}{453.6} = \frac{\text{Kg}}{0.4536}$

SPECIAL CUP HOLDERS WITH PLUNGER VALVE

The actual springing stroke is:
- For height C= 55 mm 37 mm
- For height C= 110 mm 84 mm



VERSION 06 150 20

VERSION 06 150 20 L

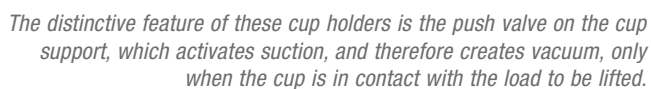
CUP HOLDERS WITH STRAIGHT QUICK COUPLER FOR PLASTIC HOSE Ø 6 X 8										C = 110 mm	
Art.	Force Kg	A	*C	D Ø	F Ø	L	Cup art.	Support included art.	Disc included art.	Weight Kg	Weight Kg
06 150 20	45.00	71	55	154	M35 x 1.5	215	01 150 10	00 08 35	00 03 22	1.43	1.52

Note: Cups are not an integral part of the cup holders, therefore, they must be ordered separately.
Add the letter L to the code to order L-type fittings.

* Also available with height C of 110 mm



2



With these cup holders it is no longer necessary to install cocks on the suction hoses; for this reason, they are recommended in all those cases in which there is a chance that not all the cups come into contact with the load to be lifted (because of an uneven or incomplete load).

The same push valve can also be applied with no modification to the special articulated cup holders.

The actual springing stroke is:

- For height C= 55 mm 37 mm
- For height C= 110 mm 84 mm



$C = 110 \text{ mm}$

Note: Cups are not an integral part of the cup holders, therefore, they must be ordered separately.

* Also available with height C of 110 mm

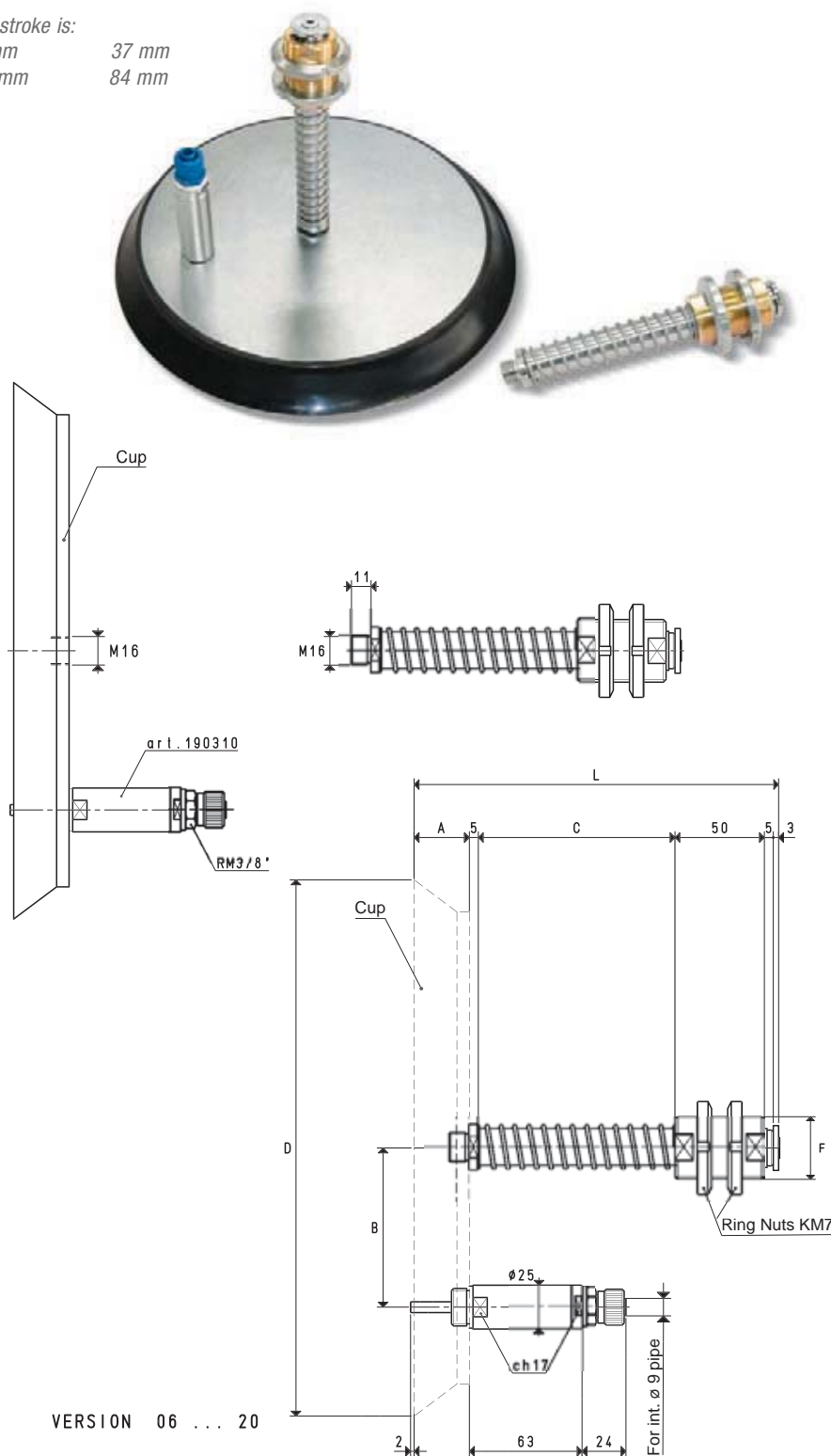
2.127



SPECIAL CUP HOLDERS WITH PUSH VALVE

The actual springing stroke is:

- For height C= 55 mm 37 mm
- For height C= 110 mm 84 mm



VERSION 06 ... 20

CUP HOLDERS WITH STRAIGHT QUICK COUPLER FOR PLASTIC HOSE Ø 9 X 12

C = 110 mm

Art.	Force Kg	A	B	*C	D Ø	F Ø	L	Cup art.	Weight Kg	Weight Kg
06 300 20	176.6	31	89	55	300	M35 x 1.5	149	08 300 10	5.56	5.69
06 350 20	240.0	31	89	55	350	M35 x 1.5	149	08 350 10	7.42	7.55

Note: Cups are not an integral part of the cup holders, therefore, they must be ordered separately.

* Also available with height C of 110 mm

2.128

Conversion ratio: $\text{inch} = \frac{\text{mm}}{25.4}$; $\text{pounds} = \frac{\text{g}}{453.6} = \frac{\text{Kg}}{0.4536}$



SPECIAL CUP HOLDERS WITH BUILT-IN SHUT-OFF VALVE

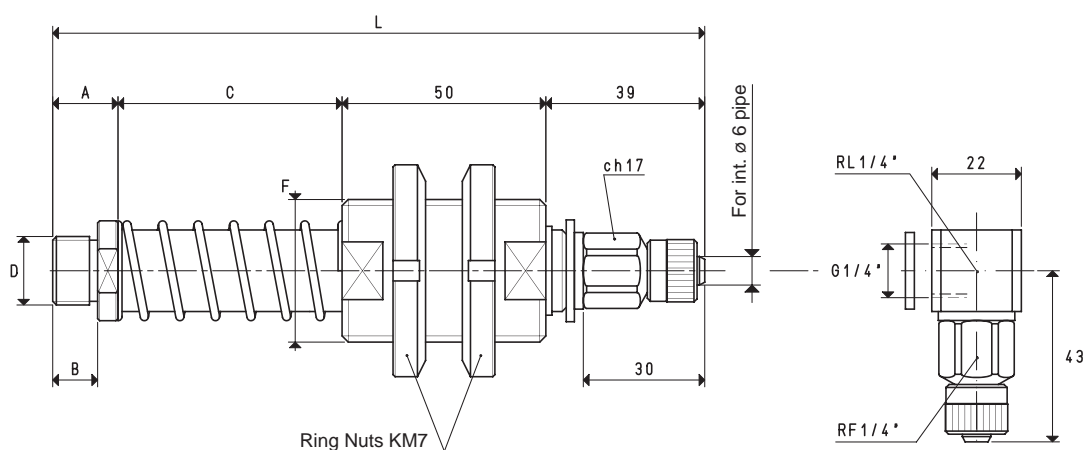
2



Along with all the other features they share with the other basic cup holders, these have a built-in shut-off valve. The purpose of the shut-off valve is to automatically close suction when the cup is not in contact with the surface of the load to be handled or in case of a faulty grip or of considerable transpiration, thus preventing the reduction of the vacuum level on the remaining cups of the system which are regularly handling the load. The clear advantage of this system is that the positioning or the exclusion of the non-gripping cups are no longer binding. Cups with diameters between 85 mm and 150 mm can be assembled onto these cup holders, as long as they are provided with a threaded 3/8" gas female support.

The actual springing stroke is:

- For height C= 55 mm 37 mm
- For height C= 110 mm 84 mm



VERSION 06

VERSION 06 L

CUP HOLDERS WITH STRAIGHT QUICK COUPLER FOR PLASTIC HOSE Ø 6 X 8

Art.	A	B	C	D	F	L	Weight Kg
06 99 55	16	11	55	G3/8"	M35 x 1.5	160	0.63
06 99 110	16	11	110	G3/8"	M35 x 1.5	215	0.77

Note: Add the letter L to the code to order L-type fittings.

3D drawings available at www.vuototecnica.net

Conversion ratio: inch = $\frac{\text{mm}}{25.4}$; pounds = $\frac{\text{g}}{453.6}$ = $\frac{\text{Kg}}{0.4536}$

2.129

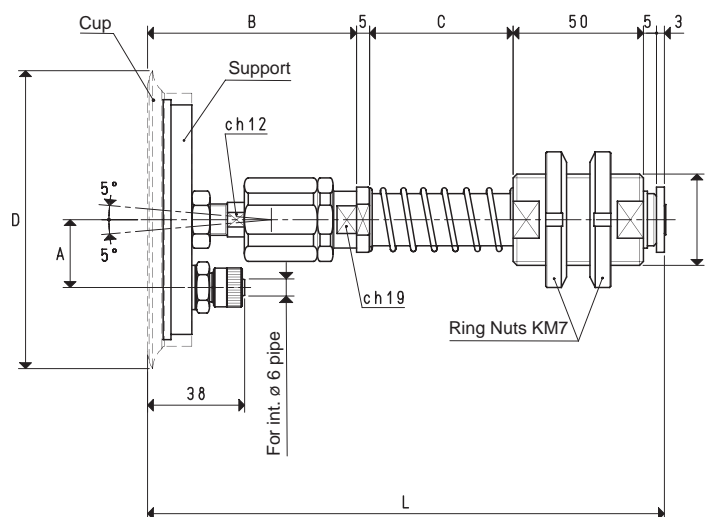
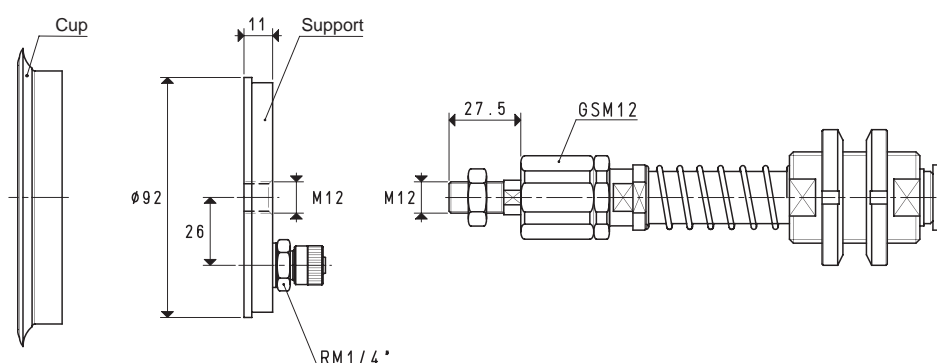


2



100%

- For height C= 55 mm 37 mm
- For height C= 110 mm 84 mm



3D drawings available at www.vuototecnica.net

C = 110 mm

Art.	Force Kg	A	B	*C	D Ø	F Ø	L	Cup art.	Support included art.	Weight Kg	Weight Kg
06 110 12	23.74	26	77	55	114	M35 x 1.5	195	01 110 10	00 06 14	1.15	1.27

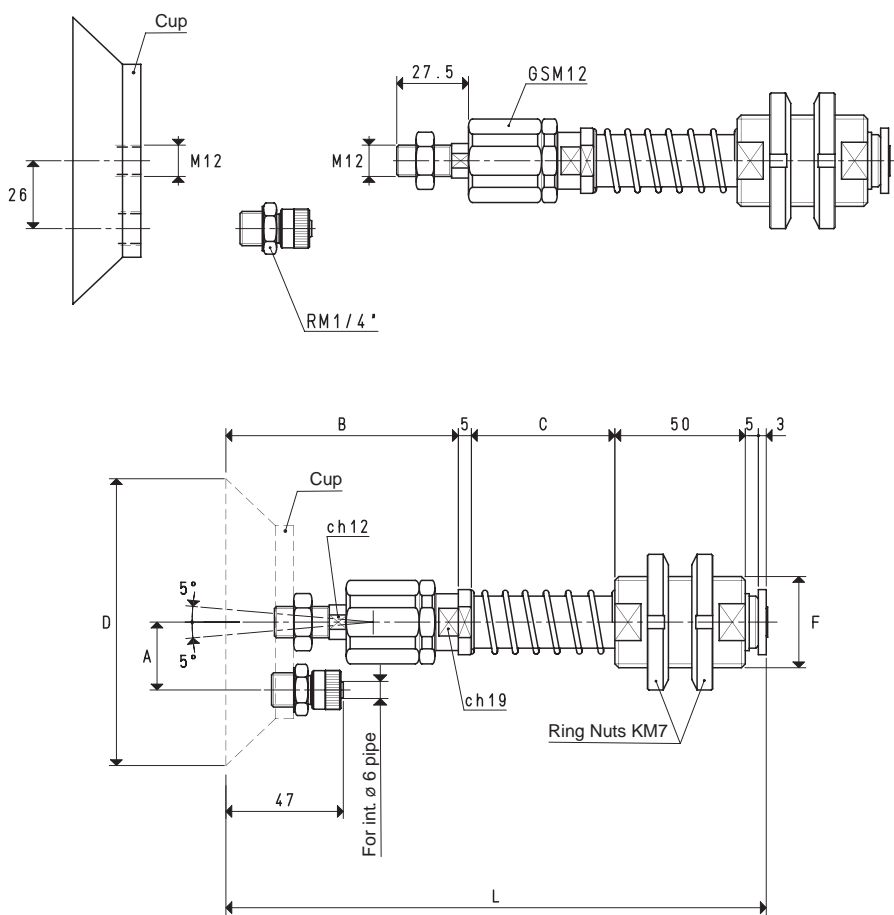
* Also available with height C of 110 mm

Conversion ratio: $\text{inch} = \frac{\text{mm}}{25.4}$; $\text{pounds} = \frac{\text{g}}{453.6} = \frac{\text{Kg}}{0.4536}$



SPECIAL ARTICULATED CUP HOLDERS

The actual springing stroke is:
- For height C= 55 mm 37 mm
- For height C= 110 mm 84 mm



VERSION 06 110 17

CUP HOLDERS WITH STRAIGHT QUICK COUPLER FOR PLASTIC HOSE Ø 6 X 8									C = 110 mm	
Art.	Force Kg	A	B	*C	D Ø	F Ø	L	Cup art.	Weight Kg	Weight Kg
06 110 17	23.74	26	86	55	110	M35 x 1.5	204	08 110 15	1.22	1.34

Note: Cups are not an integral part of the cup holders, therefore, they must be ordered separately.

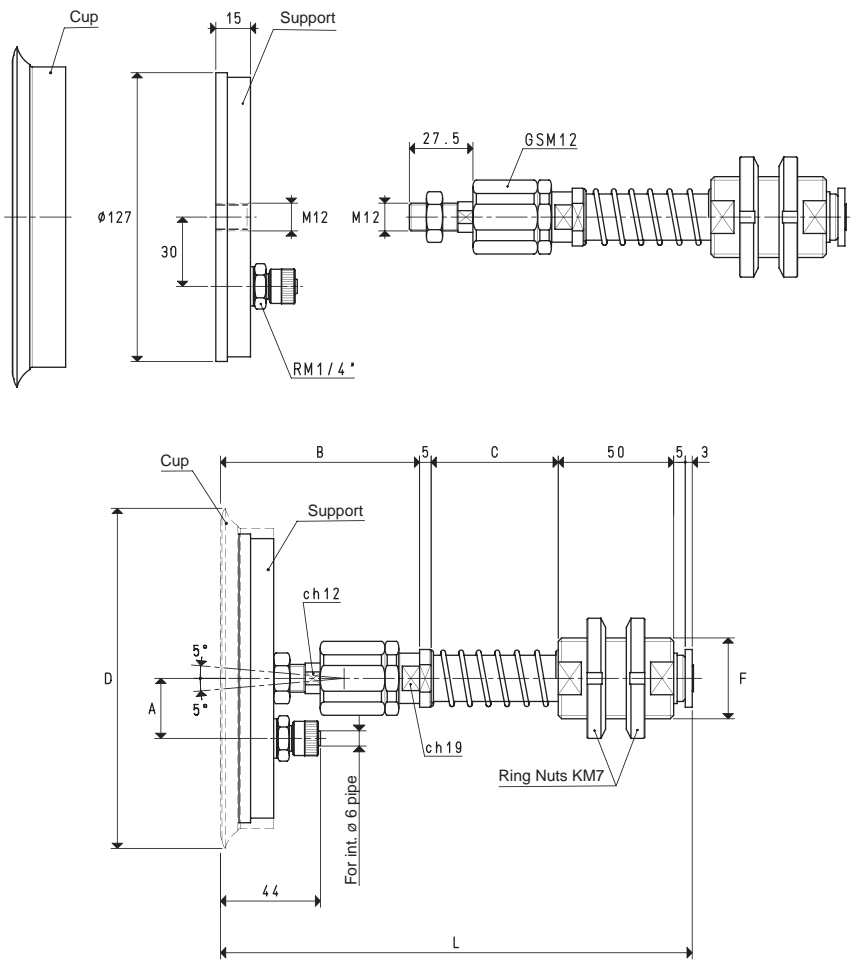
* Also available with height C of 110 mm

Conversion ratio: inch = $\frac{\text{mm}}{25.4}$; pounds = $\frac{\text{g}}{453.6}$ = $\frac{\text{Kg}}{0.4536}$



SPECIAL ARTICULATED CUP HOLDERS

The actual springing stroke is:
- For height C= 55 mm 37 mm
- For height C= 110 mm 84 mm



VERSION 06 150 12

CUP HOLDERS WITH STRAIGHT QUICK COUPLER FOR PLASTIC HOSE Ø 6 X 8										C = 110 mm	
Art.	Force Kg	A	B	*C	D Ø	F Ø	L	Cup art.	Support included art.	Weight Kg	Weight Kg
06 150 12	45.00	30	83	55	154	M35 x 1.5	201	01 150 10	00 06 15	1.56	1.69

Note: Cups are not an integral part of the cup holders, therefore, they must be ordered separately.

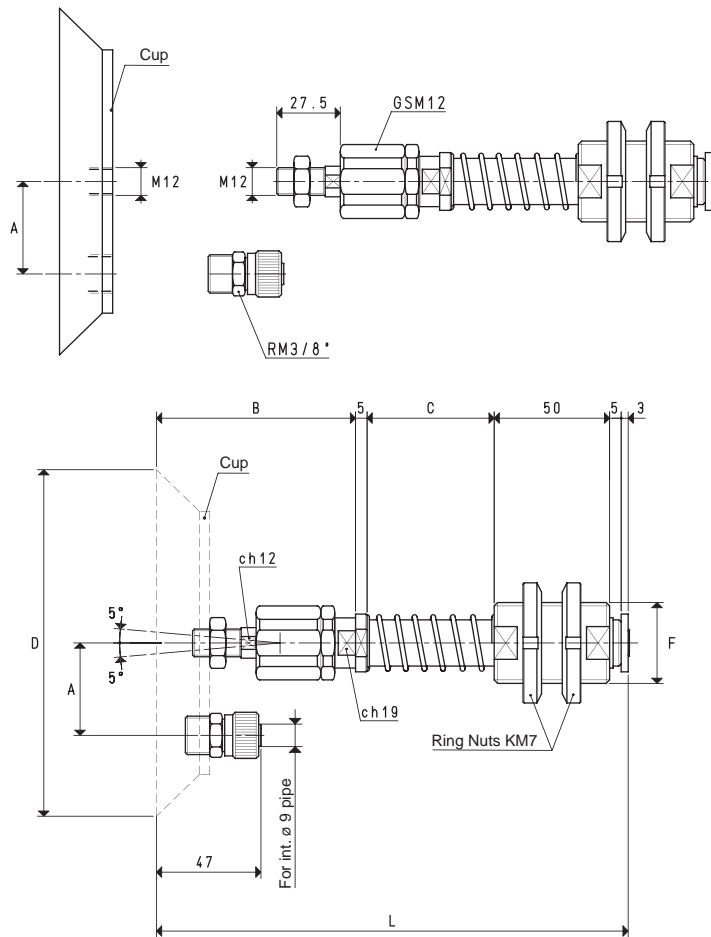
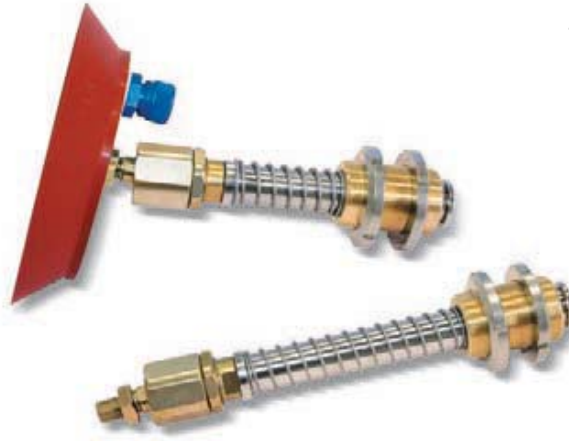
* Also available with height C of 110 mm

3D drawings available at www.vuototecnica.net



SPECIAL ARTICULATED CUP HOLDERS

The actual springing stroke is:
 - For height C= 55 mm 37 mm
 - For height C= 110 mm 84 mm



VERSION 06

CUP HOLDERS WITH STRAIGHT QUICK COUPLER FOR PLASTIC HOSE Ø 9 X 12

Art.	Force Kg	A	B	*C	D Ø	F Ø	L	Cup art.	C = 110 mm	
									Weight Kg	Weight Kg
06 150 17	45.00	40.0	86	55	150	M35 x 1.5	204	08 150 15	1.73	1.85
06 200 12	78.50	47.5	88	55	200	M35 x 1.5	206	08 200 10	2.63	2.75
06 250 12	122.60	72.5	88	55	250	M35 x 1.5	206	08 250 10	3.89	4.02

Note: Cups are not an integral part of the cup holders, therefore, they must be ordered separately.

* Also available with height C of 110 mm

Conversion ratio: inch = $\frac{\text{mm}}{25.4}$; pounds = $\frac{\text{g}}{453.6}$ = $\frac{\text{Kg}}{0.4536}$

3D drawings available at www.vuototecnica.net

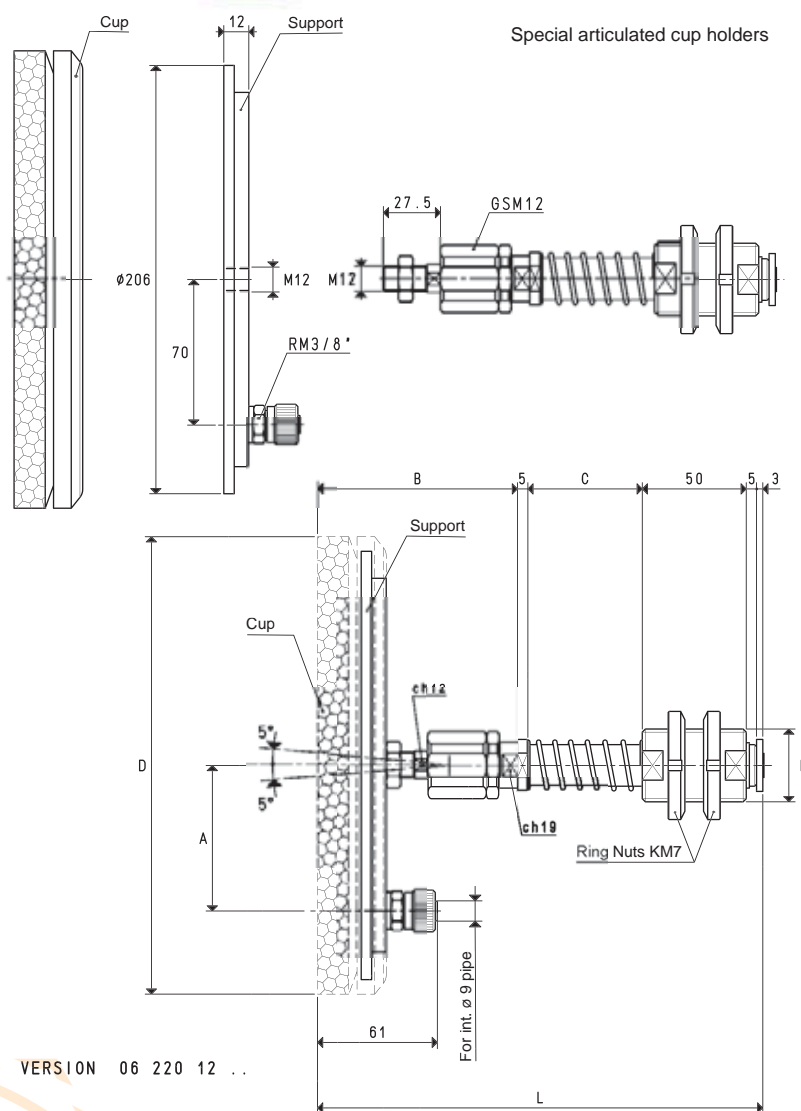
2.133

2

SPECIAL ARTICULATED CUP HOLDERS

The actual springing stroke is:

- For height C= 55 mm 37 mm
- For height C= 110 mm 84 mm



VERSION 06 220 12 ..

CUP HOLDERS WITH STRAIGHT QUICK COUPLER FOR PLASTIC HOSE Ø 9 X 12

C = 110 mm

Art.	Force Kg	A	B	*C	D Ø	F Ø	L	Cup art.	Support included art.	Weight Kg	Weight Kg
06 220 12 OF	63.60	70	97	55	220	M35 x 1.5	215	01 220 10 OF	00 08 37	2.08	2.21
06 220 12 NF	63.60	70	97	55	220	M35 x 1.5	215	01 220 10 NF	00 08 37	2.07	2.20

Note: Cups are not an integral part of the cup holders, therefore, they must be ordered separately.

* Also available with height C of 110 mm

2.134

Conversion ratio: inch = $\frac{\text{mm}}{25.4}$; pounds = $\frac{\text{g}}{453.6} = \frac{\text{Kg}}{0.4536}$

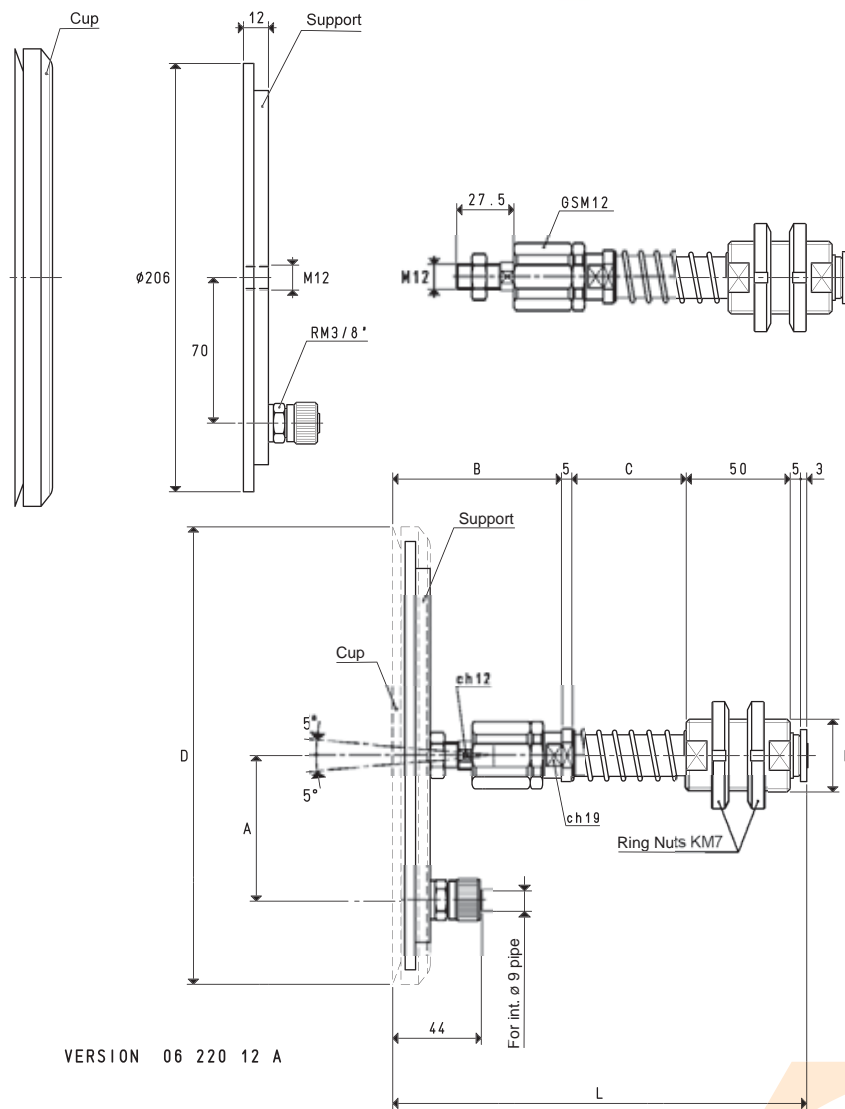


SPECIAL ARTICULATED CUP HOLDERS



The actual springing stroke is:
 - For height C= 55 mm 37 mm
 - For height C= 110 mm 84 mm

2



VERSION 06 220 12 A

CUP HOLDERS WITH STRAIGHT QUICK COUPLER FOR PLASTIC HOSE Ø 9 X 12

Art.	Force Kg	A	B	*C	D Ø	F Ø	L	Cup art.	Support included art.	C = 110 mm	
										Weight Kg	Weight Kg
06 220 12 A	78.50	70	80	55	220	M35 x 1.5	198	01 220 10 A	00 08 37	2.03	2.16

Note: Cups are not an integral part of the cup holders, therefore, they must be ordered separately.

* Also available with height C of 110 mm

3D drawings available at www.vuototecnica.net

Conversion ratio: inch = $\frac{\text{mm}}{25.4}$; pounds = $\frac{\text{g}}{453.6}$ = $\frac{\text{Kg}}{0.4536}$

2.135



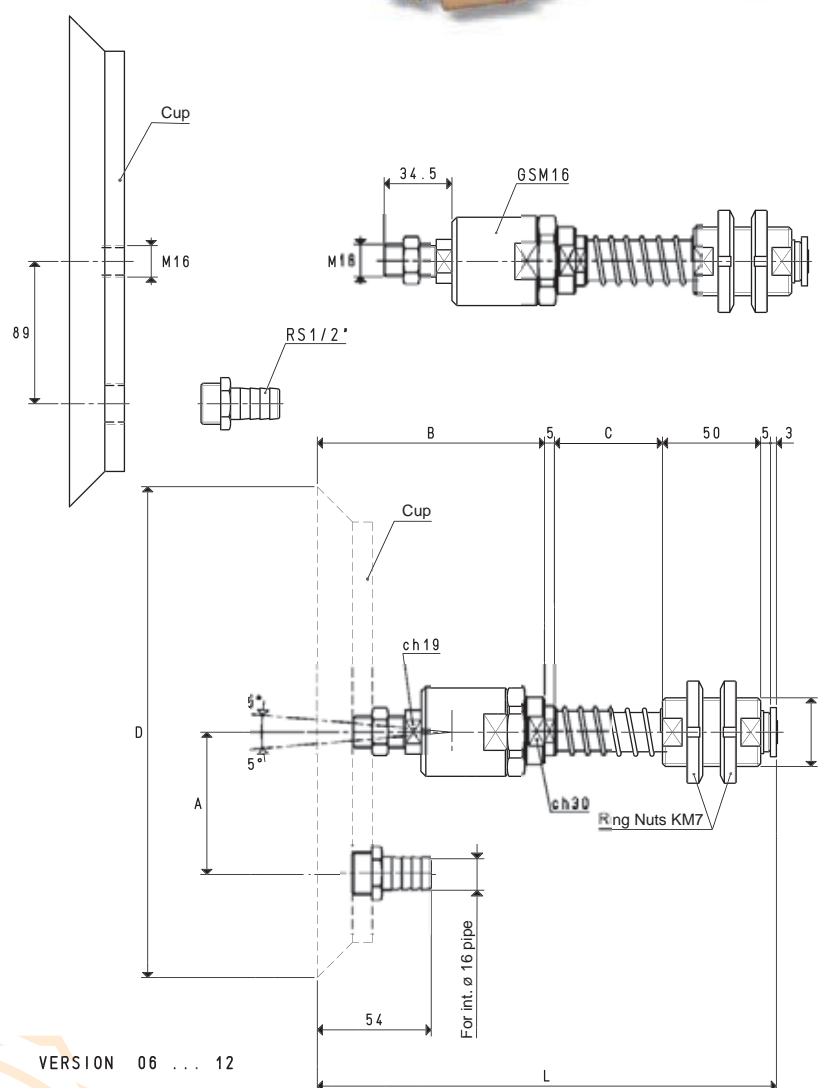
2



SPECIAL ARTICULATED CUP HOLDERS

The actual springing stroke is:

- For height C= 55 mm 37 mm
- For height C= 110 mm 84 mm



CUP HOLDERS WITH HOSE-END FITTING FOR PLASTIC HOSE Ø 16 X 18

C = 110 mm

Art.	Force Kg	A	B	*C	D Ø	F Ø	L	Cup art.	Weight Kg	Weight Kg
06 300 12	176.6	89	115	55	300	M35 x 1.5	233	08 300 10	6.09	6.22
06 350 12	240.0	89	115	55	350	M35 x 1.5	233	08 350 10	7.95	8.08

Note: Cups are not an integral part of the cup holders, therefore, they must be ordered separately.

* Also available with height C of 110 mm

2.136

Conversion ratio: inch = $\frac{\text{mm}}{25.4}$; pounds = $\frac{\text{g}}{453.6} = \frac{\text{Kg}}{0.4536}$



2



SPECIAL ARTICULATED CUP HOLDERS WITHOUT GS ARTICULATED JOINT

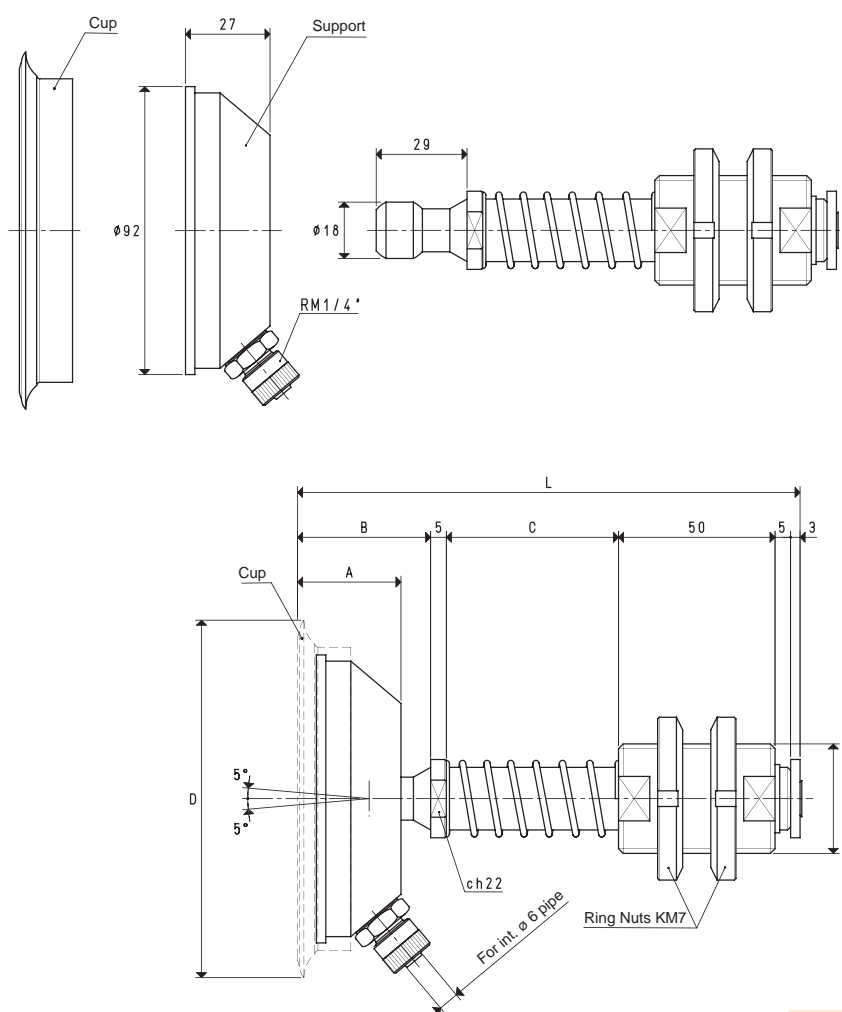


Unlike the ones previously described, these special articulated cup holders have the articulated joint housed in the cup support; this has allowed reducing the overall dimensions, without affecting performance.

The actual springing stroke is:

- For height C= 55 mm 37 mm
- For height C= 110 mm 84 mm

2



VERSION 06 110 32

CUP HOLDERS WITH STRAIGHT QUICK COUPLER FOR PLASTIC HOSE Ø 6 X 8

Art.	Force Kg	A	B	*C	D Ø	F Ø	L	Cup art.	Support included art.	Weight Kg	Weight Kg
06 110 32	23.74	33	42.5	55	114	M35 x 1.5	160.5	01 110 10	00 06 62	1.15	1.27

Note: Cups are not an integral part of the cup holders, therefore, they must be ordered separately.

* Also available with height C of 110 mm

3D drawings available at www.vuototecnica.net

Conversion ratio: inch = $\frac{\text{mm}}{25.4}$; pounds = $\frac{\text{g}}{453.6}$ = $\frac{\text{Kg}}{0.4536}$

2.137



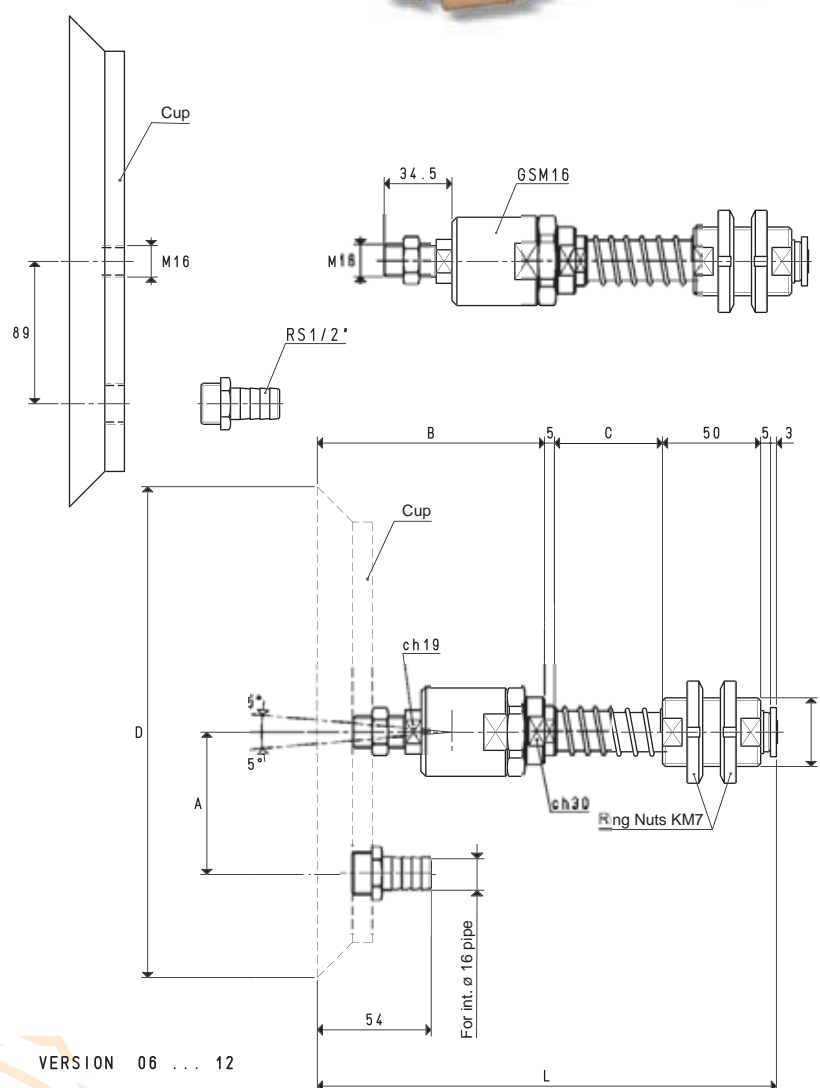
2



SPECIAL ARTICULATED CUP HOLDERS

The actual springing stroke is:

- For height C= 55 mm 37 mm
- For height C= 110 mm 84 mm



VERSION 06 ... 12

CUP HOLDERS WITH HOSE-END FITTING FOR PLASTIC HOSE Ø 16 X 18

C = 110 mm

Art.	Force Kg	A	B	*C	D Ø	F Ø	L	Cup art.	Weight Kg	Weight Kg
06 300 12	176.6	89	115	55	300	M35 x 1.5	233	08 300 10	6.09	6.22
06 350 12	240.0	89	115	55	350	M35 x 1.5	233	08 350 10	7.95	8.08

Note: Cups are not an integral part of the cup holders, therefore, they must be ordered separately.

* Also available with height C of 110 mm

2.136

Conversion ratio: inch = $\frac{\text{mm}}{25.4}$; pounds = $\frac{\text{g}}{453.6} = \frac{\text{Kg}}{0.4536}$



2

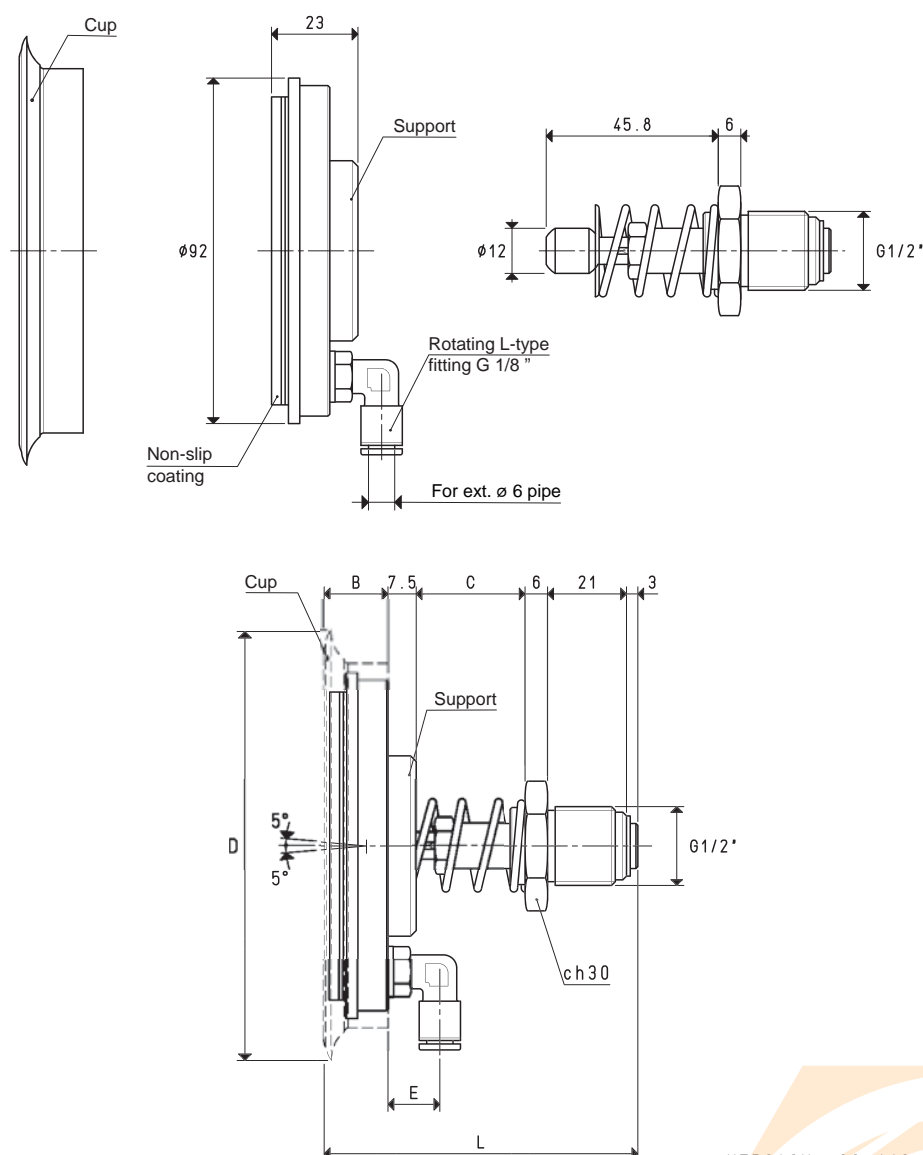


SPECIAL ARTICULATED CUP HOLDERS WITH COMPACT STROKE

2



Marble and glass sheets are usually handled with cups that take them from a horizontal plane and place them vertically or vice versa. These special cup holders with compact stroke have been designed to minimise the lever forces between the cup and the machine fixing bush during the rotation of the sheets, as well as their sliding on the cups. They share all the technical features of the other special cup holders but their overall dimensions are reduced to the minimum, by housing the articulated joint in the cup support, thus reducing the steel stem and the spring stroke length and modifying the brass bush, in order to allow it to be screwed directly onto the machine. Moreover, a special non-slip plastic coating fixed onto the cup support prevents the lifted load from slipping.



VERSION 06 110 42

CUP HOLDERS WITH L-TYPE QUICK COUPLER FOR PLASTIC HOSE Ø 4 X 6

Art.	Force Kg	B	C	D	E Ø	L	Cup art.	Support included art.	Weight Kg
06 110 42	23.74	17	29	114	13	83.5	01 110 10	00 06 59	0.49

Note: Cups are not an integral part of the cup holders, therefore, they must be ordered separately.

3D drawings available at www.vuototecnica.net

Conversion ratio: inch = $\frac{\text{mm}}{25.4}$; pounds = $\frac{\text{g}}{453.6}$ = $\frac{\text{Kg}}{0.4536}$

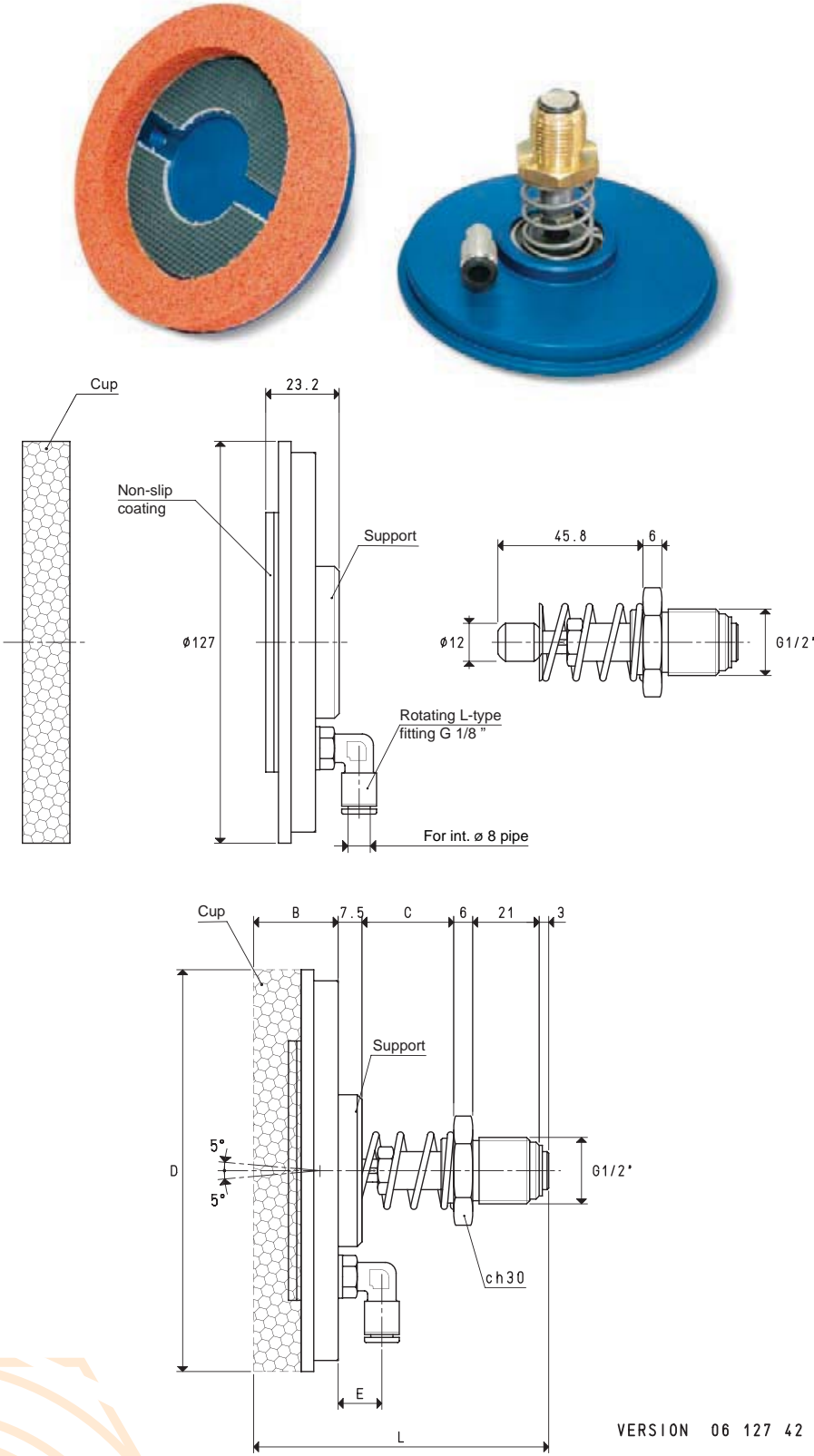
2.139



2



SPECIAL ARTICULATED CUP HOLDERS WITH COMPACT STROKE



CUP HOLDERS WITH L-TYPE QUICK COUPLER FOR PLASTIC HOSE Ø 6 X 8

Art.	Force Kg	B	C	D	E Ø	L	Cup art.	Support included art.	Weight Kg
06 127 42	17.50	26.7	29	127	13.5	93.2	01 127 15	00 06 61	0.76

Note: Cups are not an integral part of the cup holders, therefore, they must be ordered separately.

2.140

Conversion ratio: inch = $\frac{\text{mm}}{25.4}$; pounds = $\frac{\text{g}}{453.6}$ = $\frac{\text{Kg}}{0.4536}$

3D drawings available at www.vuototecnica.net

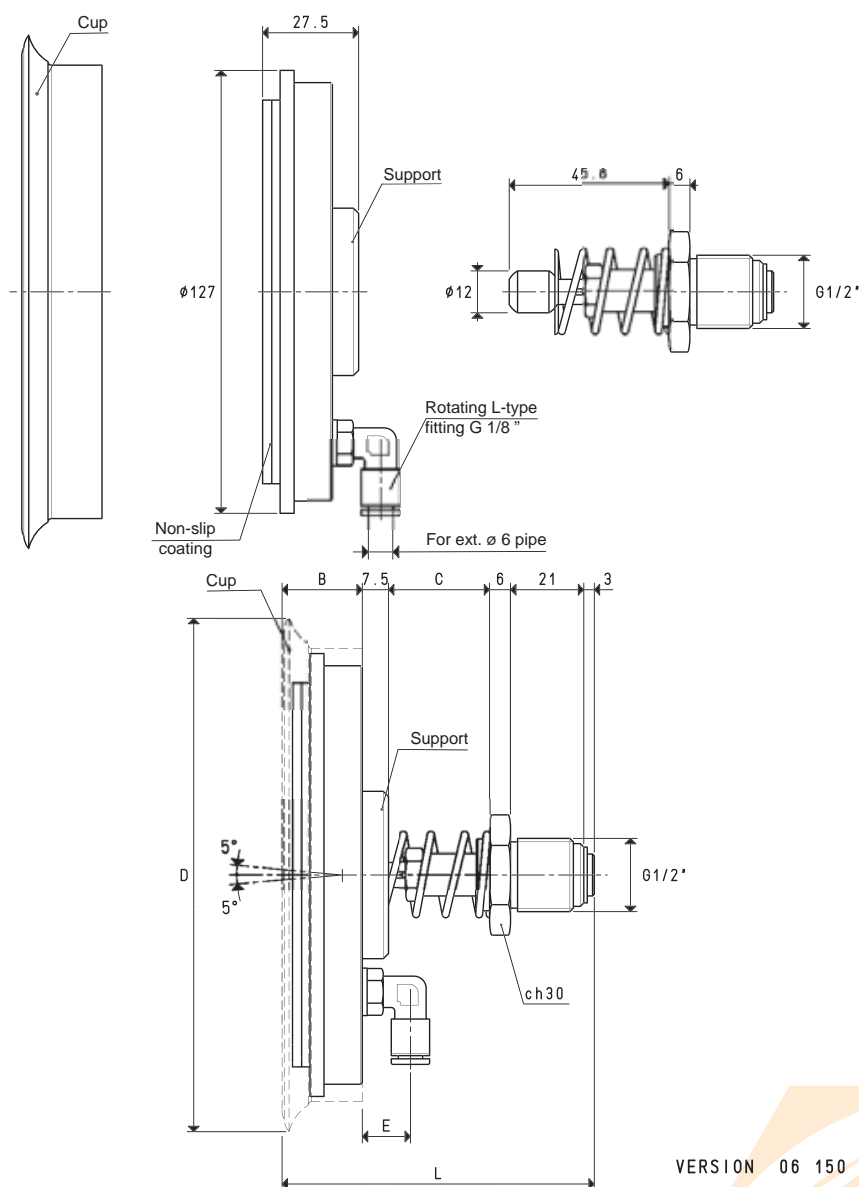


2



SPECIAL ARTICULATED CUP HOLDERS WITH COMPACT STROKE

2



VERSION 06 150 42

CUP HOLDERS WITH STRAIGHT QUICK COUPLER FOR PLASTIC HOSE Ø 4 X 6

Art.	Force Kg	B	C	D	E Ø	L	Cup art.	Support included art.	Weight Kg
06 150 42	45.00	23	29	154	13	89.5	01 150 10	00 06 60	0.94

Note: Cups are not an integral part of the cup holders, therefore, they must be ordered separately.

Conversion ratio: inch = $\frac{\text{mm}}{25.4}$; pounds = $\frac{\text{g}}{453.6}$ = $\frac{\text{Kg}}{0.4536}$

2.141



2



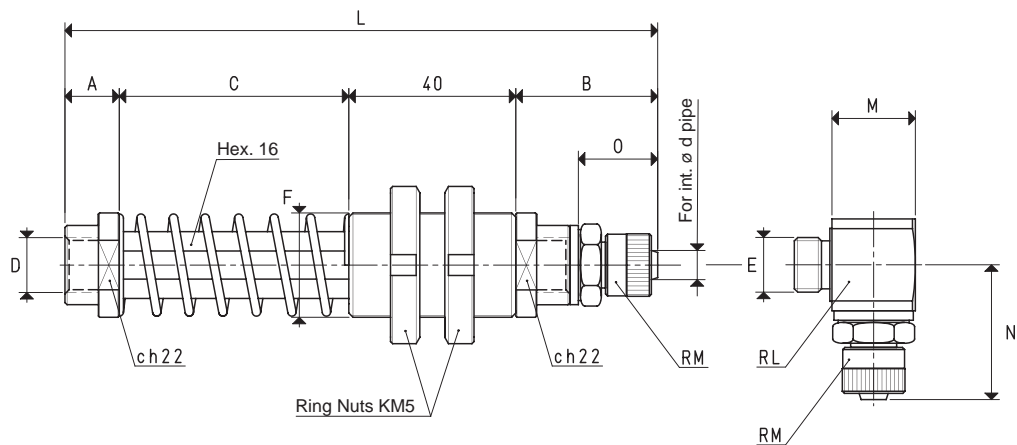
SPECIAL STAINLESS STEEL ANTI-ROTATION CUP HOLDERS

Designed for the robot-automotive sector, these cup holders offer ideal solutions to various handling problems that arise in all industrial sectors. The distinctive features of these cup holders are their brass stem with hexagonal section and the steel drive bush, also with hexagonal hole. This structure prevents the stem and, as a consequence, the cup assembled onto it from rotating on its axis. The drive bush is provided with two fine thread ring nuts to guarantee an accurate fastening of the cup holder to the machine. Moreover, the two ends of the stem, also in stainless steel, are threaded male or female and interchangeable. The straight quick coupler for the connection to the suction hose is screwed to one end, while the cup with support is assembled onto the other end.

They are suited for cups with a diameter between 40 mm and 200 mm, and they are necessary for assembling rectangular and oval cups.

The actual springing stroke is:

- For height C= 55 mm 37 mm
- For height C= 110 mm 84 mm



VERSION 06

VERSION 06 L

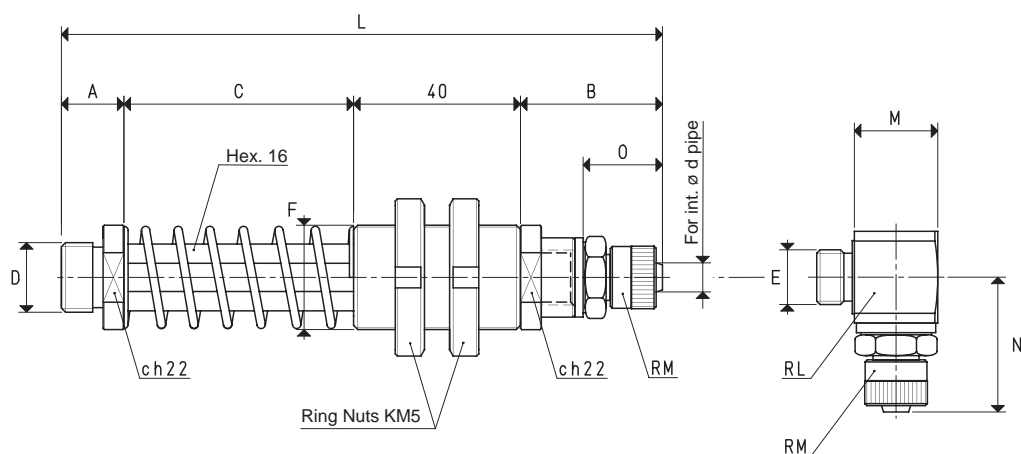
CUP HOLDERS WITH STRAIGHT QUICK COUPLER FOR PLASTIC HOSE

Art.	A	B	C	D Ø	d Ø	E Ø	F Ø	L	M	N	O	RL	RM	Weight g
06 55 80	13	34	55	G1/4"	6	G1/4"	M25 x 1.5	142	21.0	32.0	18.5	G1/4"	G1/4"	318
06 55 81	15	40	55	G3/8"	9	G3/8"	M25 x 1.5	150	21.5	35.5	22.0	G3/8"	G3/8"	330
06 55 82	15	34	55	G3/8"	6	G1/4"	M25 x 1.5	144	21.0	32.0	18.5	G1/4"	G1/4"	320
06 110 80	13	34	110	G1/4"	6	G1/4"	M25 x 1.5	197	21.0	32.0	18.5	G1/4"	G1/4"	386
06 110 81	15	40	110	G3/8"	9	G3/8"	M25 x 1.5	205	21.5	35.5	22.0	G3/8"	G3/8"	398
06 110 82	15	34	110	G3/8"	6	G1/4"	M25 x 1.5	199	21.0	32.0	18.5	G1/4"	G1/4"	388

Note: Add the letter L to the code to order L-type fittings.

SPECIAL ANTI-ROTATION CUP HOLDERS WITH THREADED MALE CONNECTOR

The actual springing stroke is:
 - For height C= 55 mm 37 mm
 - For height C= 110 mm 84 mm



VERSION 06

VERSION 06 L

CUP HOLDERS WITH STRAIGHT QUICK COUPLER FOR PLASTIC HOSE

Art.	A	B	C	D Ø	d Ø	E Ø	F Ø	L	M	N	O	RL	RM	Weight g
06 55 90	15	34	55	G1/4"	6	G1/4"	M25 x 1.5	144	21.0	32.0	18.5	G1/4"	G1/4"	314
06 55 91	15	34	55	G3/8"	6	G1/4"	M25 x 1.5	144	21.0	32.0	18.5	G1/4"	G1/4"	320
06 55 92	15	40	55	G3/8"	9	G3/8"	M25 x 1.5	150	21.5	35.5	22.0	G3/8"	G3/8"	330
06 55 93	15	40	55	G1/2"	9	G3/8"	M25 x 1.5	150	21.5	35.5	22.0	G3/8"	G3/8"	332
06 55 94	15	34	55	M12	6	G1/4"	M25 x 1.5	144	21.0	32.0	18.5	G1/4"	G1/4"	318
06 55 95	15	40	55	M12	9	G3/8"	M25 x 1.5	150	21.5	35.5	22.0	G3/8"	G3/8"	328
06 55 96	15	40	55	M16	9	G3/8"	M25 x 1.5	150	21.5	35.5	22.0	G3/8"	G3/8"	330
06 110 90	15	34	110	G1/4"	6	G1/4"	M25 x 1.5	199	21.0	32.0	18.5	G1/4"	G1/4"	374
06 110 91	15	34	110	G3/8"	6	G1/4"	M25 x 1.5	199	21.0	32.0	18.5	G1/4"	G1/4"	380
06 110 92	15	40	110	G3/8"	9	G3/8"	M25 x 1.5	205	21.5	35.5	22.0	G3/8"	G3/8"	390
06 110 93	15	40	110	G1/2"	9	G3/8"	M25 x 1.5	205	21.5	35.5	22.0	G3/8"	G3/8"	392
06 110 94	15	34	110	M12	6	G1/4"	M25 x 1.5	199	21.0	32.0	18.5	G1/4"	G1/4"	378
06 110 95	15	40	110	M12	9	G3/8"	M25 x 1.5	205	21.5	35.5	22.0	G3/8"	G3/8"	388
06 110 96	15	40	110	M16	6	G3/8"	M25 x 1.5	205	21.5	35.5	22.0	G3/8"	G3/8"	390

Note: Add the letter L to the code to order L-type fittings.

Conversion ratio: inch = $\frac{\text{mm}}{25.4}$; pounds = $\frac{\text{g}}{453.6}$ = $\frac{\text{Kg}}{0.4536}$



2



SPECIAL ANTI-ROTATION CUP HOLDERS WITH SPHERICAL SWIVEL SUPPORT

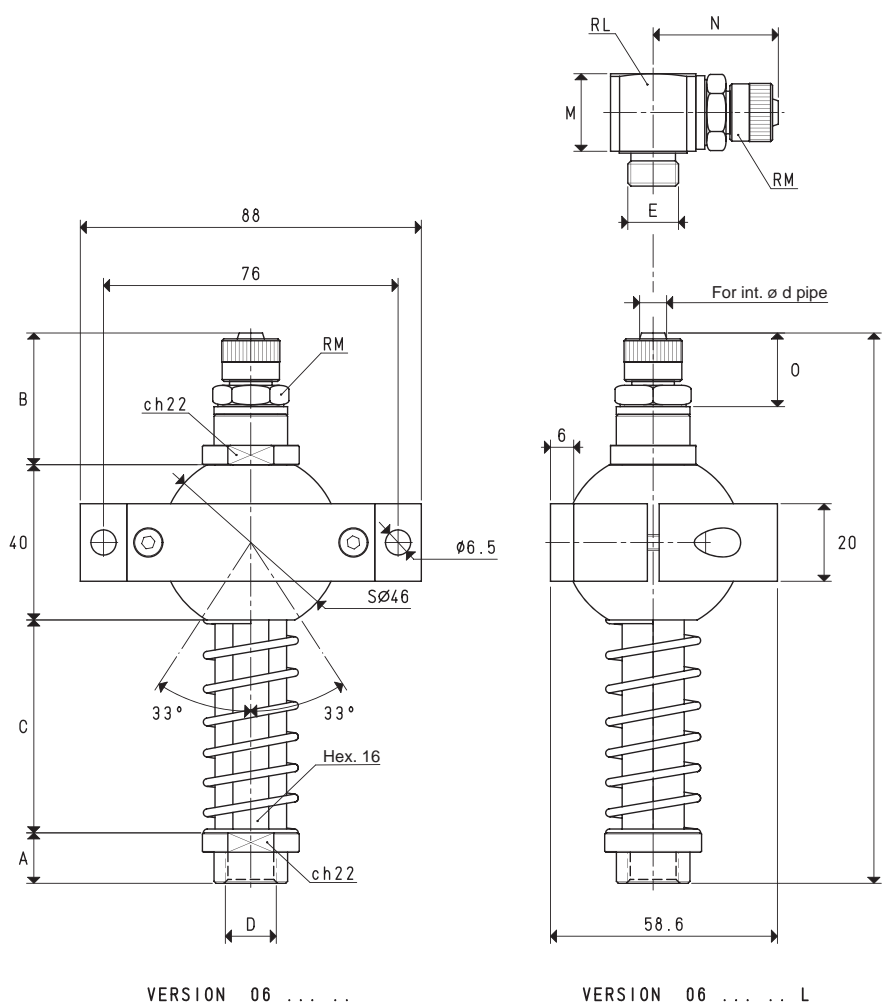
Along with all the features of the special anti-rotation cup holders described above, these cup holders are provided with a nylon spherical swivel support which allows to place and keep the cup in the desired place.

Their fixing support is made with aluminium and is composed of two parts that, screwed together, allow to block the spherical joint, thus keeping the cup holder in place.

They are suited for cups with a diameter between 40 mm and 200 mm, but they are necessary for assembling rectangular and oval cups.

The actual springing stroke is:

- For height C= 55 mm 37 mm
- For height C= 110 mm 84 mm



VERSION 06

VERSION 06 L

CUP HOLDERS WITH STRAIGHT QUICK COUPLER FOR PLASTIC HOSE

Art.	A	B	C	D	d	E	L	M	N	O	RL	RM	Weight g
06 55 100	13	34	55	G1/4"	6	G1/4"	142	21.0	32.0	18.5	G1/4"	G1/4"	338
06 55 101	15	40	55	G3/8"	9	G3/8"	150	21.5	35.5	22.0	G3/8"	G3/8"	350
06 55 102	15	34	55	G3/8"	6	G1/4"	144	21.0	32.0	18.5	G1/4"	G1/4"	340
06 110 100	13	34	110	G1/4"	6	G1/4"	197	21.0	32.0	18.5	G1/4"	G1/4"	406
06 110 101	15	40	110	G3/8"	9	G3/8"	205	21.5	35.5	22.0	G3/8"	G3/8"	418
06 110 102	15	34	110	G3/8"	6	G1/4"	199	21.0	32.0	18.5	G1/4"	G1/4"	408

Note: Add the letter L to the code to order L-type fittings.

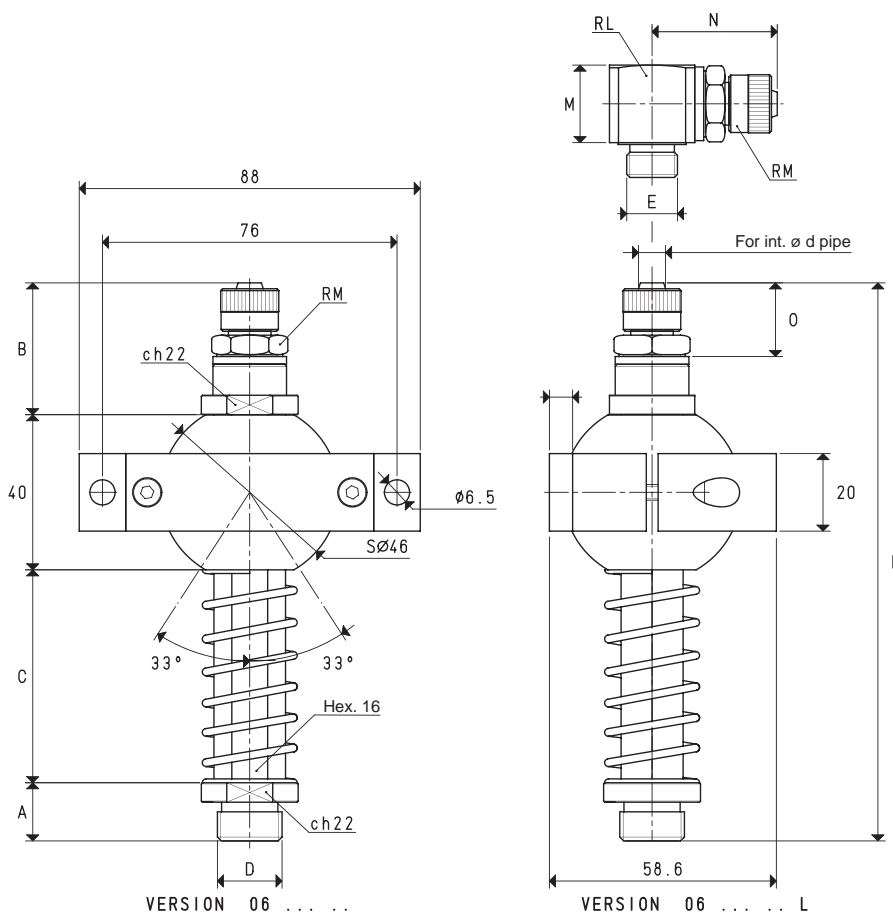
2.144

Conversion ratio: inch = $\frac{\text{mm}}{25.4}$; pounds = $\frac{\text{g}}{453.6}$ = $\frac{\text{Kg}}{0.4536}$



2

- For height $C = 55 \text{ mm}$ 37 mm
- For height $C = 110 \text{ mm}$ 84 mm



3D drawings available at www.vuototecnica.net

Art.	A	B	C	D Ø	d Ø	E Ø	L	M	N	O	RL	RM	Weight g
06 55 110	15	34	55	G1/4"	6	G1/4"	144	21.0	32.0	18.5	G1/4"	G1/4"	334
06 55 111	15	34	55	G3/8"	6	G1/4"	144	21.0	32.0	18.5	G1/4"	G1/4"	340
06 55 112	15	40	55	G3/8"	9	G3/8"	150	21.5	35.5	22.0	G3/8"	G3/8"	350
06 55 113	15	40	55	G1/2"	9	G3/8"	150	21.5	35.5	22.0	G3/8"	G3/8"	352
06 55 114	15	34	55	M12	6	G1/4"	144	21.0	32.0	18.5	G1/4"	G1/4"	338
06 55 115	15	40	55	M12	9	G3/8"	150	21.5	35.5	22.0	G3/8"	G3/8"	348
06 55 116	15	40	55	M16	9	G3/8"	150	21.5	35.5	22.0	G3/8"	G3/8"	350
06 110 110	15	34	110	G1/4"	6	G1/4"	199	21.0	32.0	18.5	G1/4"	G1/4"	394
06 110 111	15	34	110	G3/8"	6	G1/4"	199	21.0	32.0	18.5	G1/4"	G1/4"	400
06 110 112	15	40	110	G3/8"	9	G3/8"	205	21.5	35.5	22.0	G3/8"	G3/8"	410
06 110 113	15	40	110	G1/2"	9	G3/8"	205	21.5	35.5	22.0	G3/8"	G3/8"	412
06 110 114	15	34	110	M12	6	G1/4"	199	21.0	32.0	18.5	G1/4"	G1/4"	398
06 110 115	15	40	110	M12	9	G3/8"	205	21.5	35.5	22.0	G3/8"	G3/8"	408
06 110 116	15	40	110	M16	9	G3/8"	205	21.5	35.5	22.0	G3/8"	G3/8"	410

Conversion ratio: inch = $\frac{\text{mm}}{25.4}$; pounds = $\frac{\text{g}}{453.6} = \frac{\text{Kg}}{0.4536}$

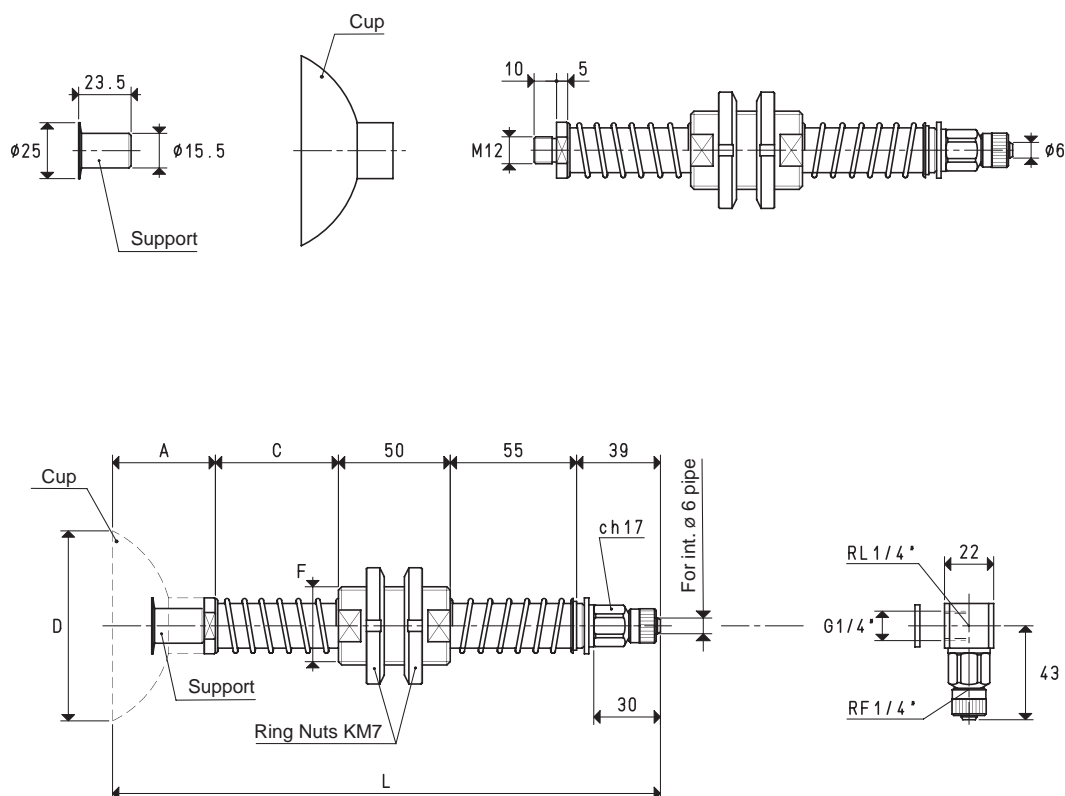
SPECIAL CUP HOLDERS WITH DOUBLE SPRINGING

All the special cup holders previously described can be provided in the double springing version.

The cup holder fixing bush is located between two springs: the lower one cushions the impact of the cup with the load to be lifted during the approach phase, while the upper one cushions the impact of the bush with the cup holder end and gradually loads the cup during the lifting phase. These cup holders are especially recommended when the load to be lifted is very heavy, rough or not perfectly flat.

The actual springing stroke is:

- For height C= 55 mm 37 mm
- For height C= 110 mm 84 mm



VERSION 06 85 13

VERSION 06 85 13 L

CUP HOLDERS WITH STRAIGHT QUICK COUPLER FOR PLASTIC HOSE Ø 6 X 8

C = 110 mm

Art.	Force Kg	A	*C	D Ø	F Ø	L	Cup art.	Support included art.	Weight Kg	Weight Kg
06 85 13	13.50	46	55	85	M35 x 1.5	245	01 85 10	00 08 29	0.87	0.99

Note: Cups are not an integral part of the cup holders, therefore, they must be ordered separately.

Add the letter L to the code to order L-type fittings.

* Also available with height C of 110 mm

2.146

Conversion ratio: inch = $\frac{\text{mm}}{25.4}$; pounds = $\frac{\text{g}}{453.6}$ = $\frac{\text{Kg}}{0.4536}$

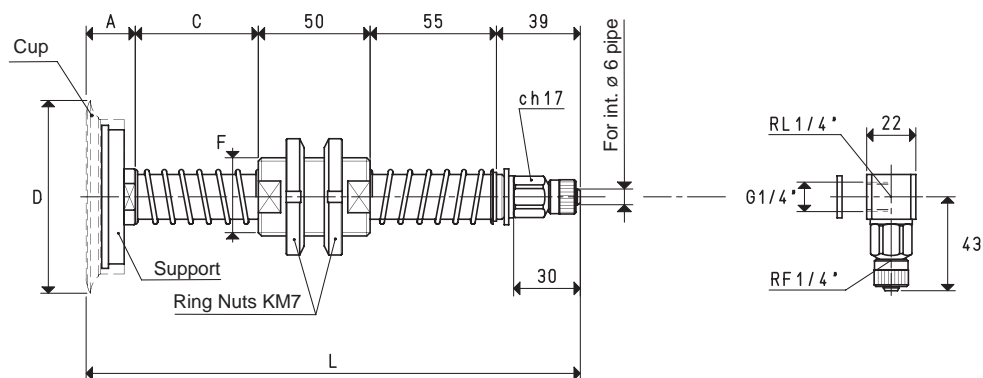
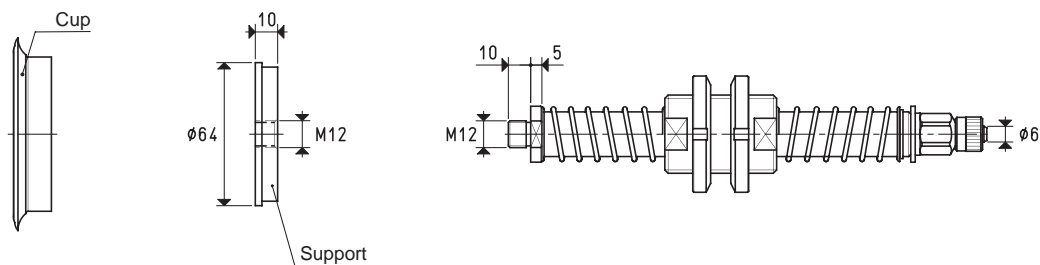


2



SPECIAL CUP HOLDERS WITH DOUBLE SPRINGING

The actual springing stroke is:
 - For height C= 55 mm 37 mm
 - For height C= 110 mm 84 mm



VERSION 06 85 17

VERSION 06 85 17 L

CUP HOLDERS WITH STRAIGHT QUICK COUPLER FOR PLASTIC HOSE Ø 6 X 8

Art.	Force Kg	A	*C	D Ø	F Ø	L	Cup art.	Support included art.	Weight Kg	Weight Kg
06 85 17	14.18	22	55	85	M35 x 1.5	221	01 85 15	00 08 32	0.90	1.04

Note: Cups are not an integral part of the cup holders, therefore, they must be ordered separately.
 Add the letter L to the code to order L-type fittings.

* Also available with height C of 110 mm

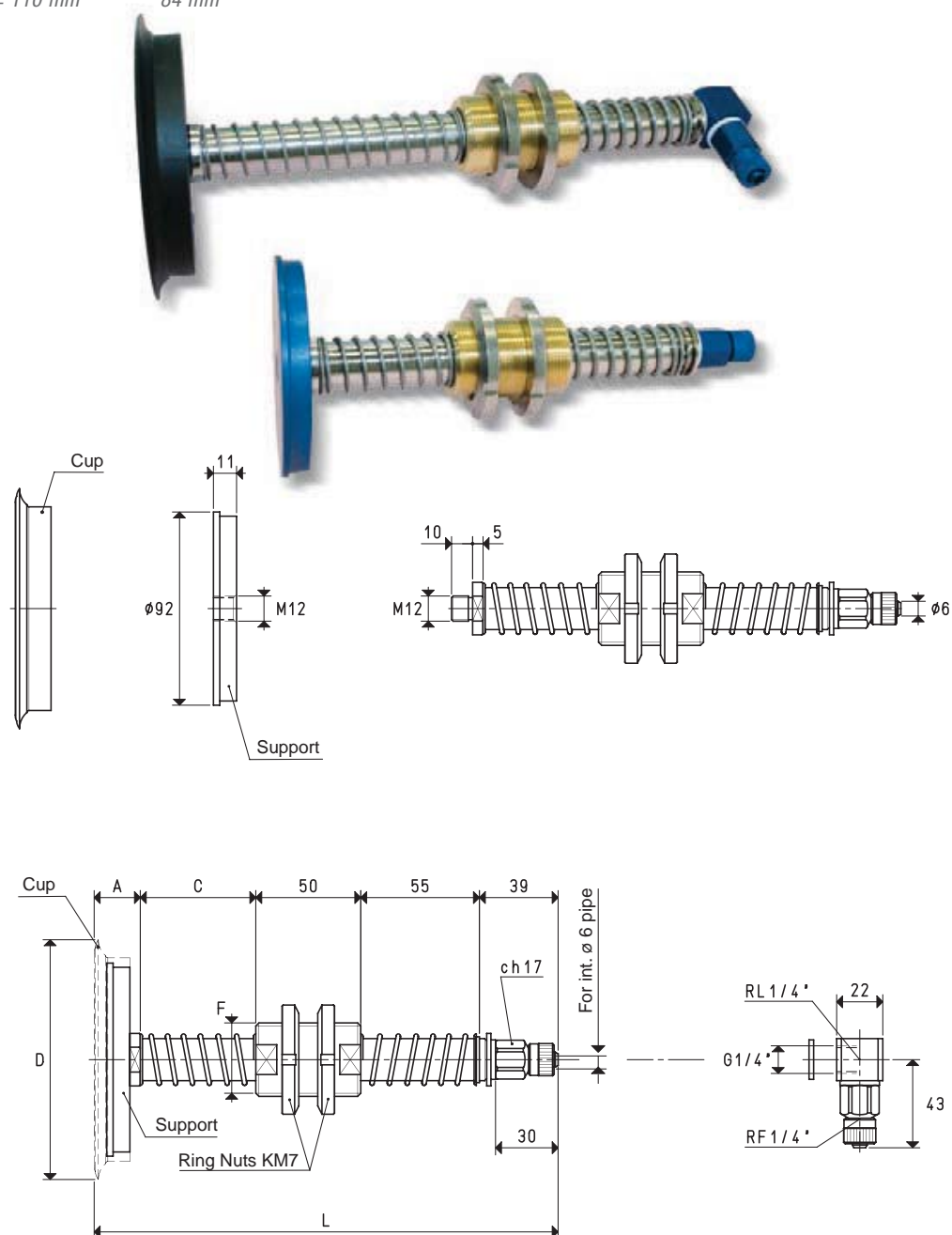
Conversion ratio: inch = $\frac{\text{mm}}{25.4}$; pounds = $\frac{\text{g}}{453.6}$ = $\frac{\text{Kg}}{0.4536}$



SPECIAL CUP HOLDERS WITH DOUBLE SPRINGING

The actual springing stroke is:

- For height C= 55 mm 37 mm
- For height C= 110 mm 84 mm



VERSION 06 110 13

VERSION 06 110 13 L

CUP HOLDERS WITH STRAIGHT QUICK COUPLER FOR PLASTIC HOSE Ø 6 X 8

C = 110 mm

Art.	Force Kg	A	*C	D Ø	F Ø	L	Cup art.	Support included art.	Weight Kg	Weight Kg
06 110 13	23.74	22	55	114	M35 x 1.5	221	01 110 10	00 08 33	1.05	1.18

Note: Cups are not an integral part of the cup holders, therefore, they must be ordered separately.

Add the letter L to the code to order L-type fittings.

* Also available with height C of 110 mm

2.148

Conversion ratio: $\text{inch} = \frac{\text{mm}}{25.4}$; $\text{pounds} = \frac{\text{g}}{453.6} = \frac{\text{Kg}}{0.4536}$

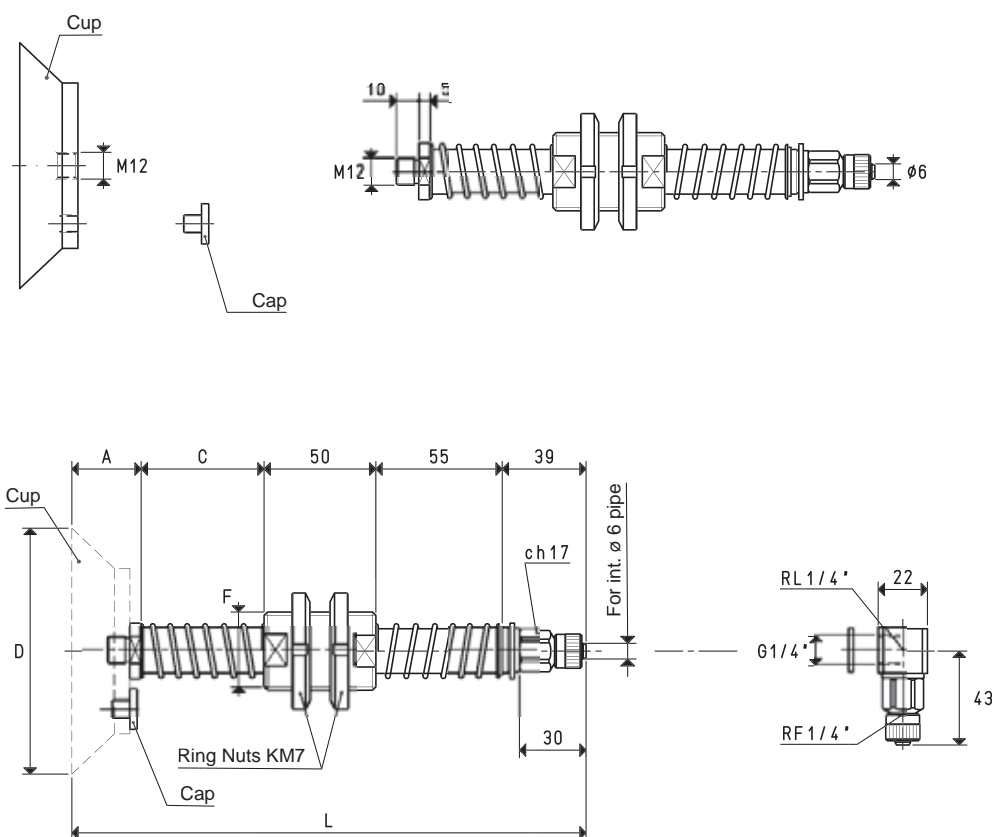


2



SPECIAL CUP HOLDERS WITH DOUBLE SPRINGING

The actual springing stroke is:
 - For height C= 55 mm 37 mm
 - For height C= 110 mm 84 mm



VERSION 06 110 16

VERSION 06 110 16 L

CUP HOLDERS WITH STRAIGHT QUICK COUPLER FOR PLASTIC HOSE Ø 6 X 8

Art.	Force	A	*C	D	F	L	Cup art.	Cap included art.	C = 110 mm	
	Kg								Weight Kg	Weight Kg
06 110 16	23.74	31	55	110	M35 x 1.5	230	08 110 15	00 11 06	1.12	1.25

Note: Cups are not an integral part of the cup holders, therefore, they must be ordered separately.
 Add the letter L to the code to order L-type fittings.

* Also available with height C of 110 mm

Conversion ratio: inch = $\frac{\text{mm}}{25.4}$; pounds = $\frac{\text{g}}{453.6}$ = $\frac{\text{Kg}}{0.4536}$

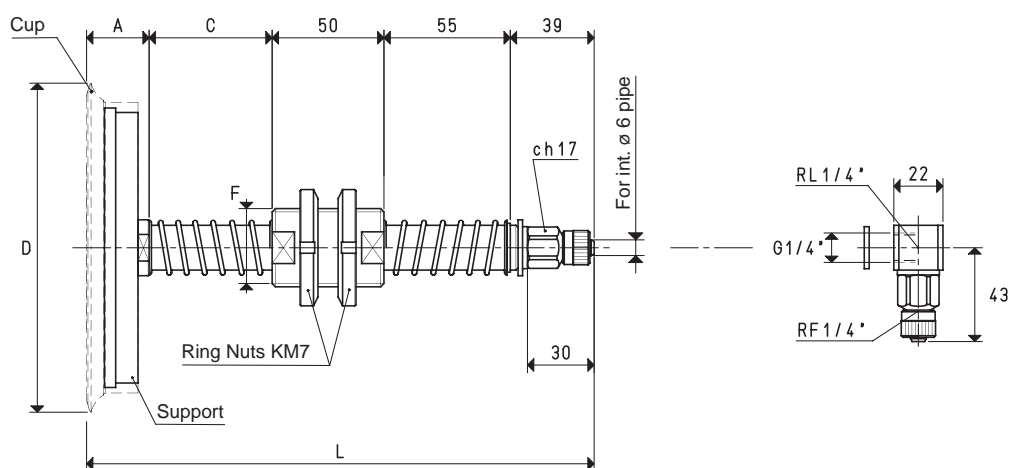
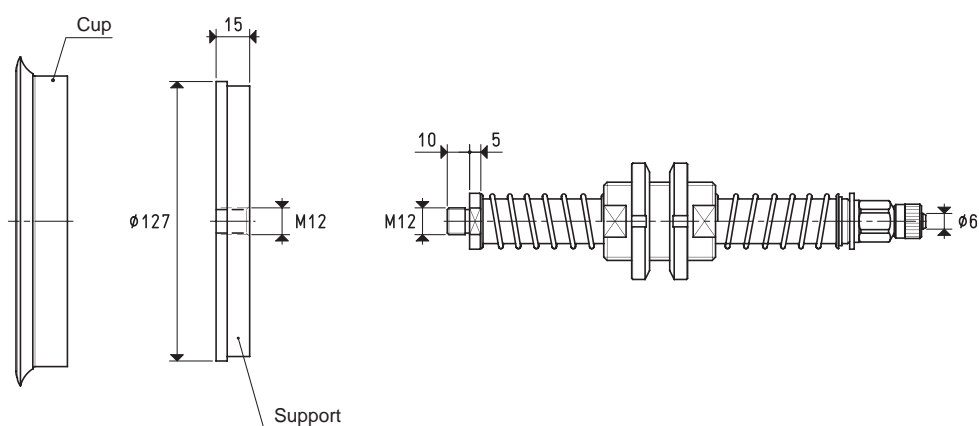


2

2.149

100%

- For height C= 55 mm 37 mm
- For height C= 110 mm 84 mm



VERSION 06 150 13 L

$C = 110 \text{ mm}$

Art.	Force Kg	A	*C	D Ø	F Ø	L	Cup art.	Support included art.	Weight Kg	Weight Kg
06 150 13	45.00	28	55	154	M35 x 1.5	227	01 150 10	00 08 35	1.46	1.58

Add the letter L to the code to order L-type fittings.

* Also available with height C of 110 mm

3D drawings available at www.vuototecnica.net

2.150

Conversion ratio: inch = $\frac{\text{mm}}{25.4}$; pounds = $\frac{\text{g}}{453.6} = \frac{\text{Kg}}{0.4536}$



2

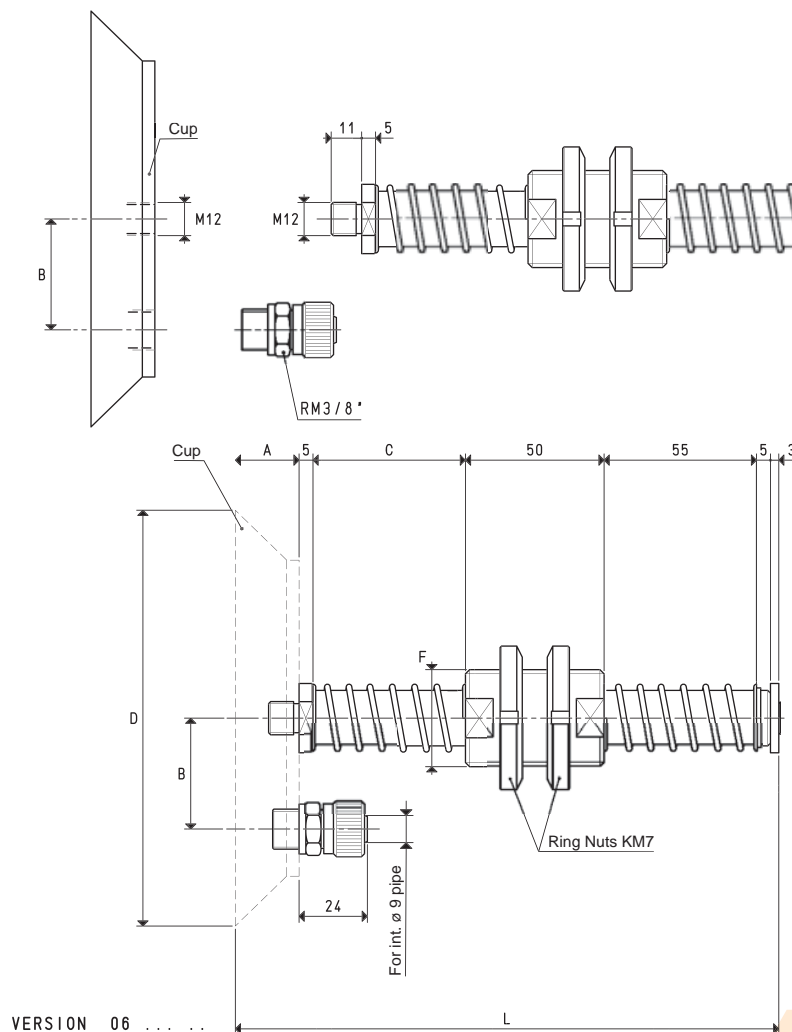


SPECIAL CUP HOLDERS WITH DOUBLE SPRINGING



The actual springing stroke is:
 - For height C= 55 mm 37 mm
 - For height C= 110 mm 84 mm

2



CUP HOLDERS WITH STRAIGHT QUICK COUPLER FOR PLASTIC HOSE Ø 9 X 12

Art.	Force Kg	A	B	*C	D Ø	F Ø	L	Cup art.	C = 110 mm	
									Weight Kg	Weight Kg
06 150 18	45.0	26	40.0	55	150	M35 x 1.5	199	08 150 15	1.65	1.79
06 200 13	78.5	28	47.5	55	200	M35 x 1.5	201	08 200 10	2.55	2.69
06 250 13	122.6	28	72.5	55	250	M35 x 1.5	201	08 250 10	3.82	3.96

Note: Cups are not an integral part of the cup holders, therefore, they must be ordered separately.

* Also available with height C of 110 mm

Conversion ratio: inch = $\frac{\text{mm}}{25.4}$; pounds = $\frac{\text{g}}{453.6}$ = $\frac{\text{Kg}}{0.4536}$

3D drawings available at www.vuototecnica.net

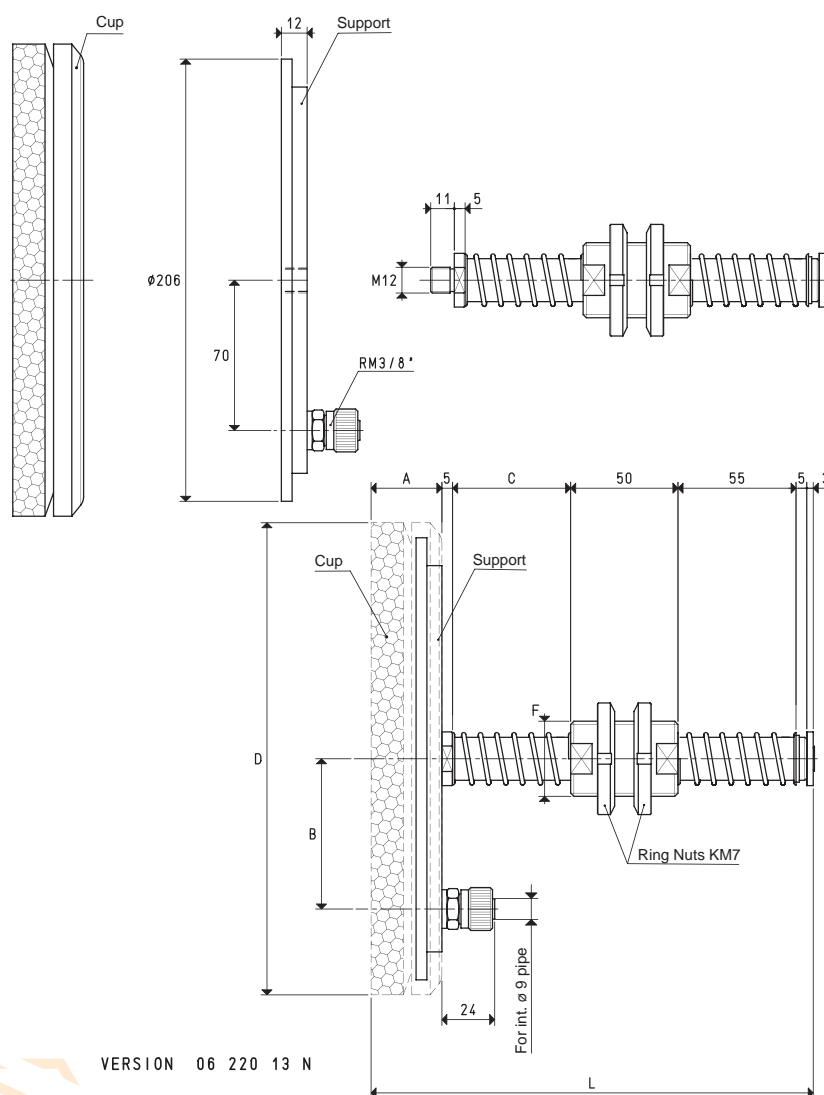
2.151

2

SPECIAL CUP HOLDERS WITH DOUBLE SPRINGING

The actual springing stroke is:

- For height C= 55 mm 37 mm
- For height C= 110 mm 84 mm



VERSION 06 220 13 N

CUP HOLDERS WITH STRAIGHT QUICK COUPLER FOR PLASTIC HOSE Ø 9 X 12

C = 110 mm

Art.	Force Kg	A	B	*C	D Ø	F Ø	L	Cup art.	Support included art.	Weight Kg	Weight Kg
06 220 13 OF	63.6	35	70	55	220	M35 x 1.5	208	01 220 10 OF	00 08 37	2.01	2.15
06 220 13 NF	63.6	35	70	55	220	M35 x 1.5	208	01 220 10 NF	00 08 37	2.00	2.14

Note: Cups are not an integral part of the cup holders, therefore, they must be ordered separately.

* Also available with height C of 110 mm

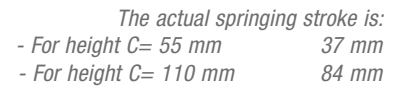
2.152

Conversion ratio: inch = $\frac{\text{mm}}{25.4}$; pounds = $\frac{\text{g}}{453.6}$ = $\frac{\text{Kg}}{0.4536}$



2





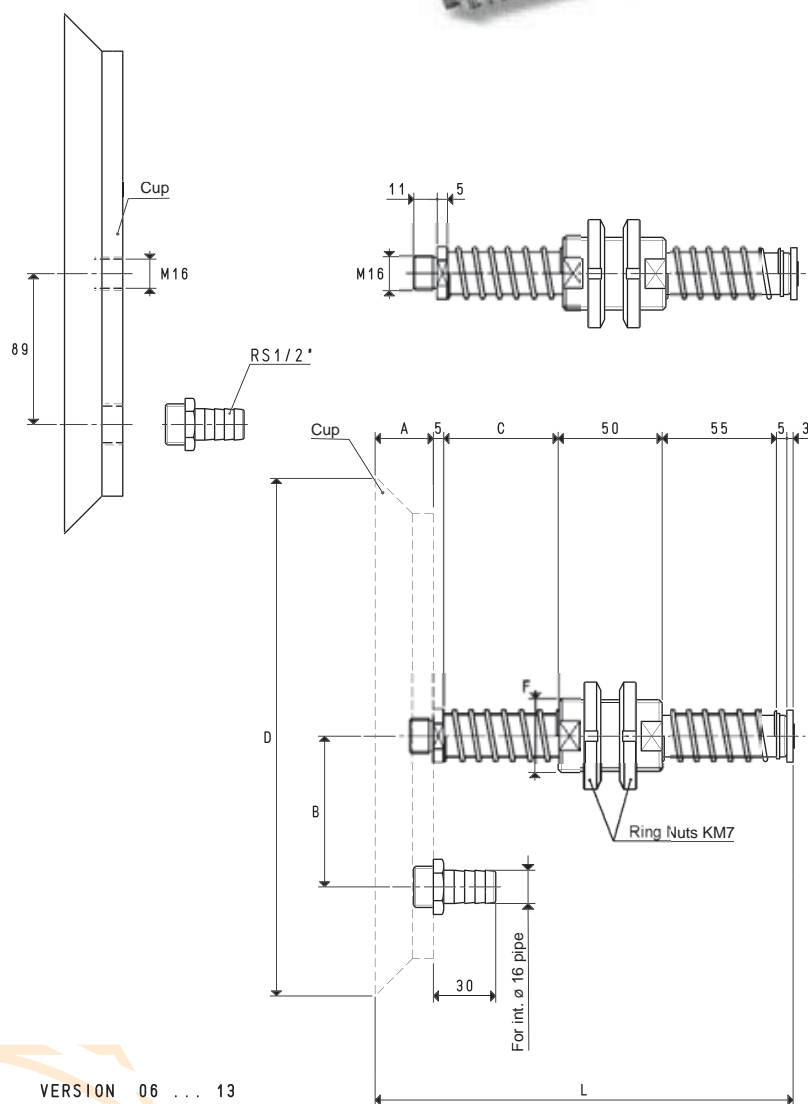
C = 110 mm

* Also available with height C of 110 mm

SPECIAL CUP HOLDERS WITH DOUBLE SPRINGING

The actual springing stroke is:

- For height C= 55 mm 37 mm
- For height C= 110 mm 84 mm



VERSION 06 ... 13

CUP HOLDERS WITH HOSE-END FITTING FOR PLASTIC HOSE Ø 16 X 18

C = 110 mm

Art.	Force Kg	A	B	*C	D Ø	F Ø	L	Cup art.	Weight Kg	Weight Kg
06 300 13	176.6	31	89	55	300	M35 x 1.5	204	08 300 10	5.57	5.70
06 350 13	240.0	31	89	55	350	M35 x 1.5	204	08 350 10	7.43	7.57

Note: Cups are not an integral part of the cup holders, therefore, they must be ordered separately.

* Also available with height C of 110 mm

2.154

Conversion ratio: inch = $\frac{\text{mm}}{25.4}$; pounds = $\frac{\text{g}}{453.6} = \frac{\text{Kg}}{0.4536}$



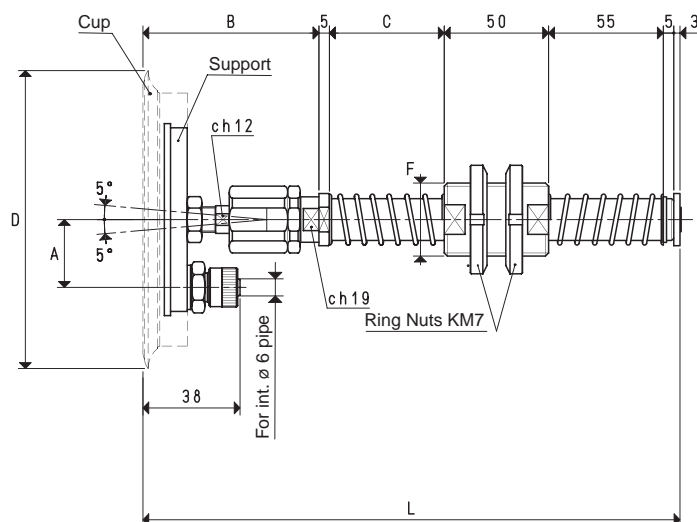
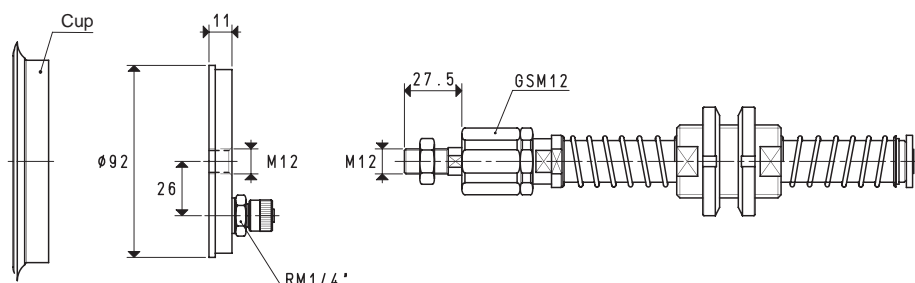
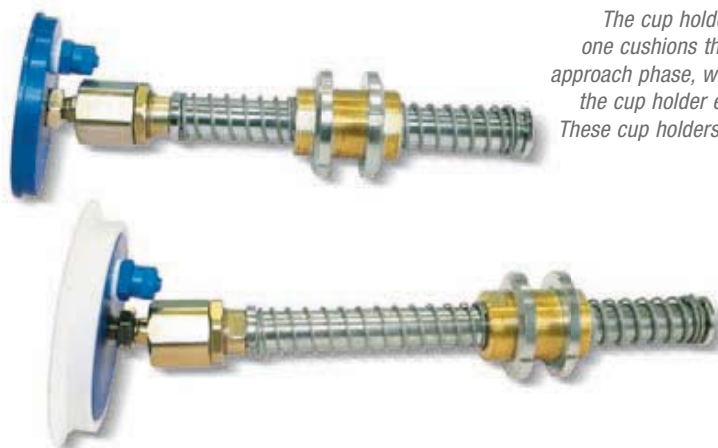
SPECIAL ARTICULATED CUP HOLDERS WITH DOUBLE SPRINGING

The distinctive feature of these cup holders is their articulated joint in hardened steel, which allows the flat cups installed on these cup holders to adapt themselves to the loads to be lifted even if not completely parallel with the cup plane, as well as to compensate possible verticality errors that can arise between the cup holder and the machine fixing support.

The cup holder fixing bush is located between two springs: the lower one cushions the impact of the cup with the load to be lifted during the approach phase, while the upper one cushions the impact of the bush with the cup holder end and gradually loads the cup during the lifting phase. These cup holders are especially recommended when the load to be lifted is very heavy, rough or not perfectly flat.

The actual springing stroke is:

- For height C= 55 mm 37 mm
- For height C= 110 mm 84 mm



VERSION 06 110 14

CUP HOLDERS WITH STRAIGHT QUICK COUPLER FOR PLASTIC HOSE Ø 6 X 8

Art.	Force Kg	A	B	*C	D Ø	F Ø	L	Cup art.	Support included art.	Weight Kg	Weight Kg
06 110 14	23.74	26	77	55	114	M35 x 1.5	250	01 110 10	00 06 14	1.29	1.39

Note: Cups are not an integral part of the cup holders, therefore, they must be ordered separately.

* Also available with height C of 110 mm

3D drawings available at www.vuototecnica.net

Conversion ratio: inch = $\frac{\text{mm}}{25.4}$; pounds = $\frac{\text{g}}{453.6}$ = $\frac{\text{Kg}}{0.4536}$

2.155

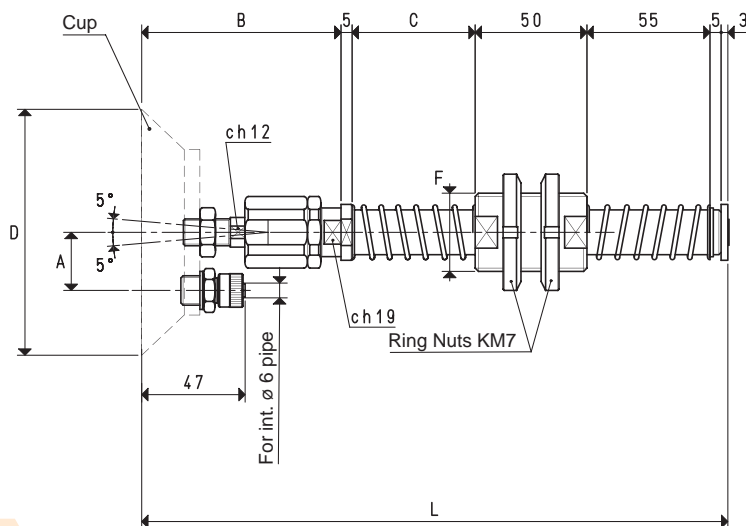
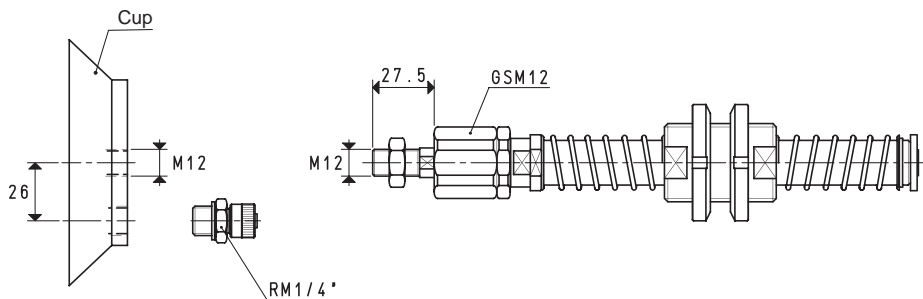


2



SPECIAL ARTICULATED CUP HOLDERS WITH DOUBLE SPRINGING

The actual springing stroke is:
- For height C= 55 mm 37 mm
- For height C= 110 mm 84 mm



VERSION 06 110 18

CUP HOLDERS WITH STRAIGHT QUICK COUPLER FOR PLASTIC HOSE Ø 6 X 8									C = 110 mm	
Art.	Force Kg	A	B	*C	D Ø	F Ø	L	Cup art.	Weight Kg	Weight Kg
06 110 18	23.74	26	86	55	110	M35 x 1.5	259	08 110 15	1.36	1.46

Note: Cups are not an integral part of the cup holders, therefore, they must be ordered seperately.

* Also available with height C of 110 mm

2.156

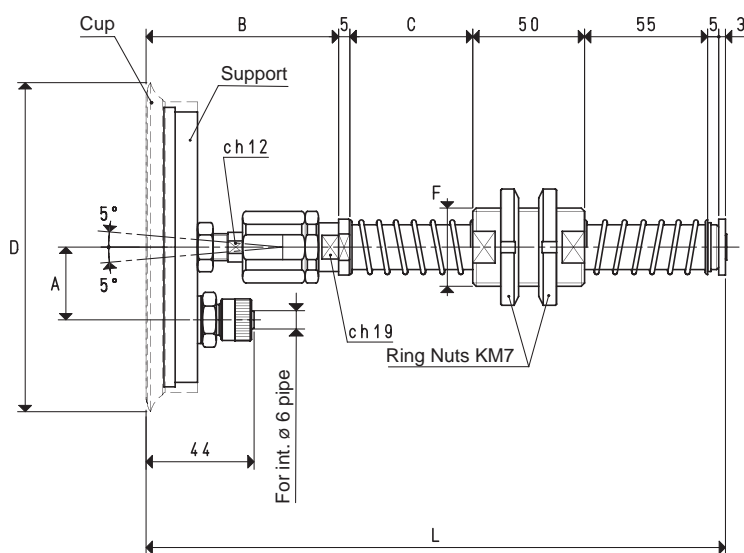
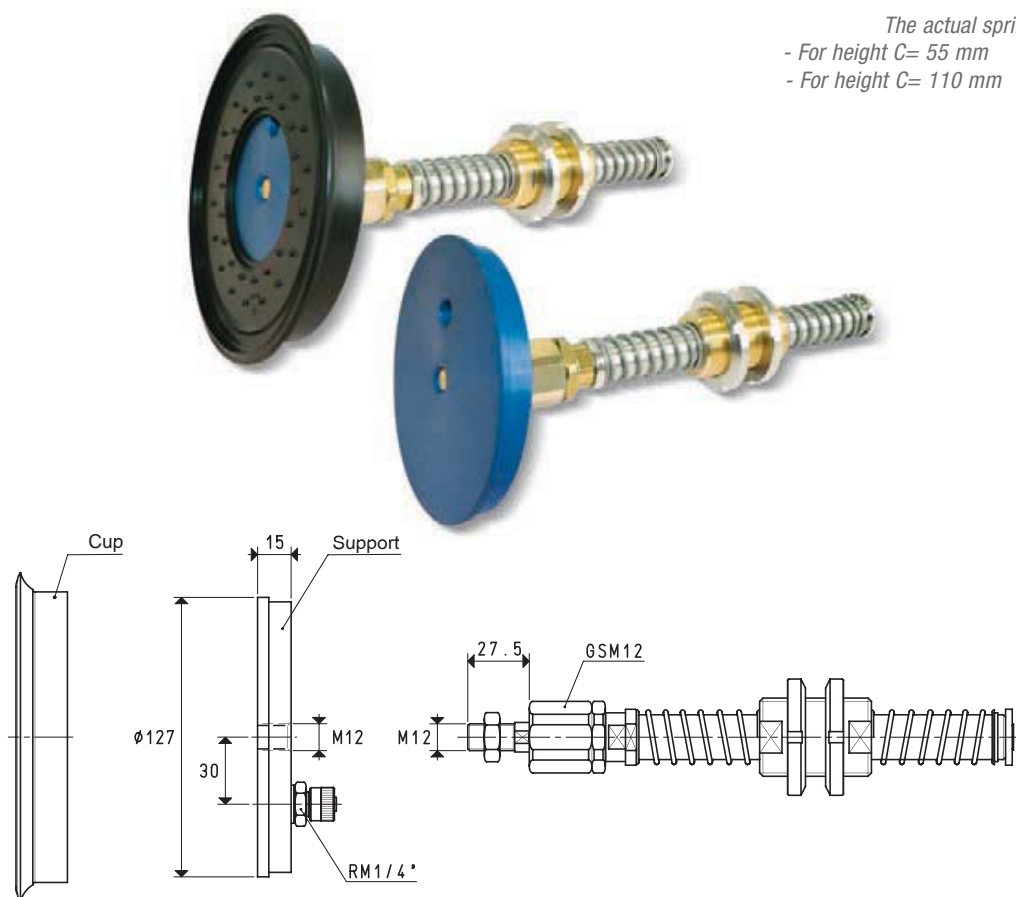
Conversion ratio: inch = $\frac{\text{mm}}{25.4}$; pounds = $\frac{\text{g}}{453.6}$ = $\frac{\text{Kg}}{0.4536}$

3D drawings available at www.vuototecnica.net



SPECIAL ARTICULATED CUP HOLDERS WITH DOUBLE SPRINGING

The actual springing stroke is:
 - For height C= 55 mm 37 mm
 - For height C= 110 mm 84 mm



VERSION 06 150 14

CUP HOLDERS WITH STRAIGHT QUICK COUPLER FOR PLASTIC HOSE Ø 6 X 8

Art.	Force Kg	A	B	*C	D Ø	F Ø	L	Cup art.	Support included art.	Weight Kg	Weight Kg
06 150 14	45.00	30	83	55	154	M35 x 1.5	256	01 150 10	00 06 15	1.71	1.81

Note: Cups are not an integral part of the cup holders, therefore, they must be ordered separately.

* Also available with height C of 110 mm

Conversion ratio: inch = $\frac{\text{mm}}{25.4}$; pounds = $\frac{\text{g}}{453.6}$ = $\frac{\text{Kg}}{0.4536}$



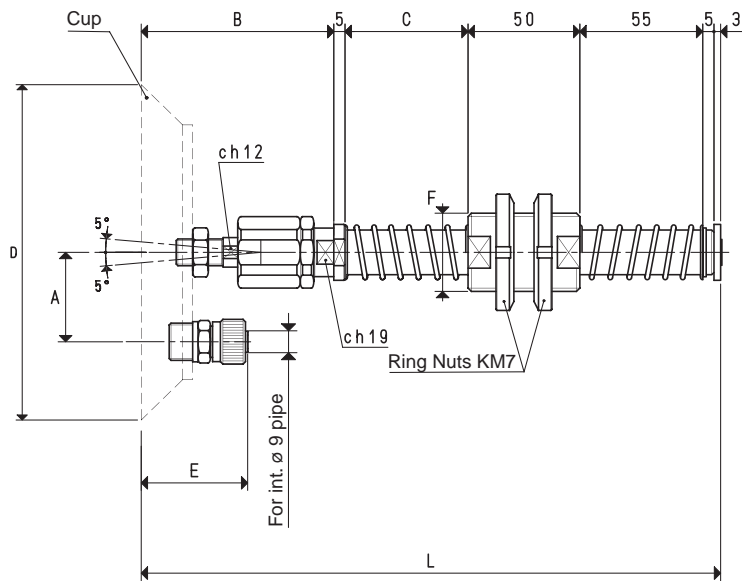
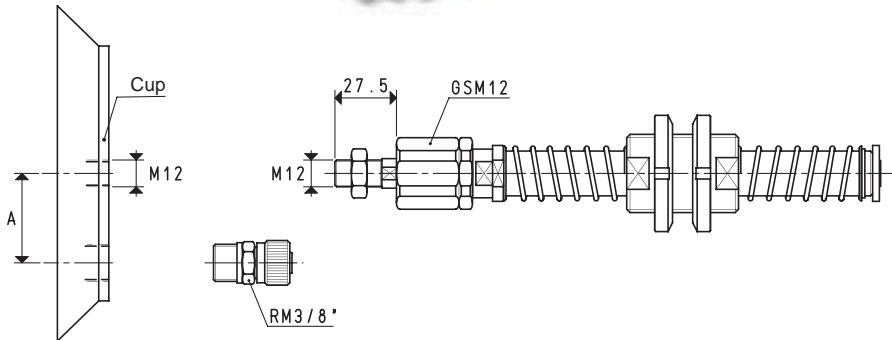
2

2.157

3D drawings available at www.vuototecnica.net

SPECIAL ARTICULATED CUP HOLDERS WITH DOUBLE SPRINGING

The actual springing stroke is:
- For height C= 55 mm 37 mm
- For height C= 110 mm 84 mm



VERSION 06

CUP HOLDERS WITH STRAIGHT QUICK COUPLER FOR PLASTIC HOSE Ø 9 X 12										C = 110 mm	
Art.	Force Kg	A	B	*C	D Ø	E	F Ø	L	Cup art.	Weight Kg	Weight Kg
06 150 19	45.00	40.0	86	55	150	50	M35 x 1.5	259	08 150 15	1.86	1.97
06 200 14	78.50	47.5	88	55	200	52	M35 x 1.5	261	08 200 10	2.77	2.87
06 250 14	122.60	72.5	88	55	250	52	M35 x 1.5	261	08 250 10	4.03	4.14

Note: Cups are not an integral part of the cup holders, therefore, they must be ordered seperately.

* Also available with height C of 110 mm

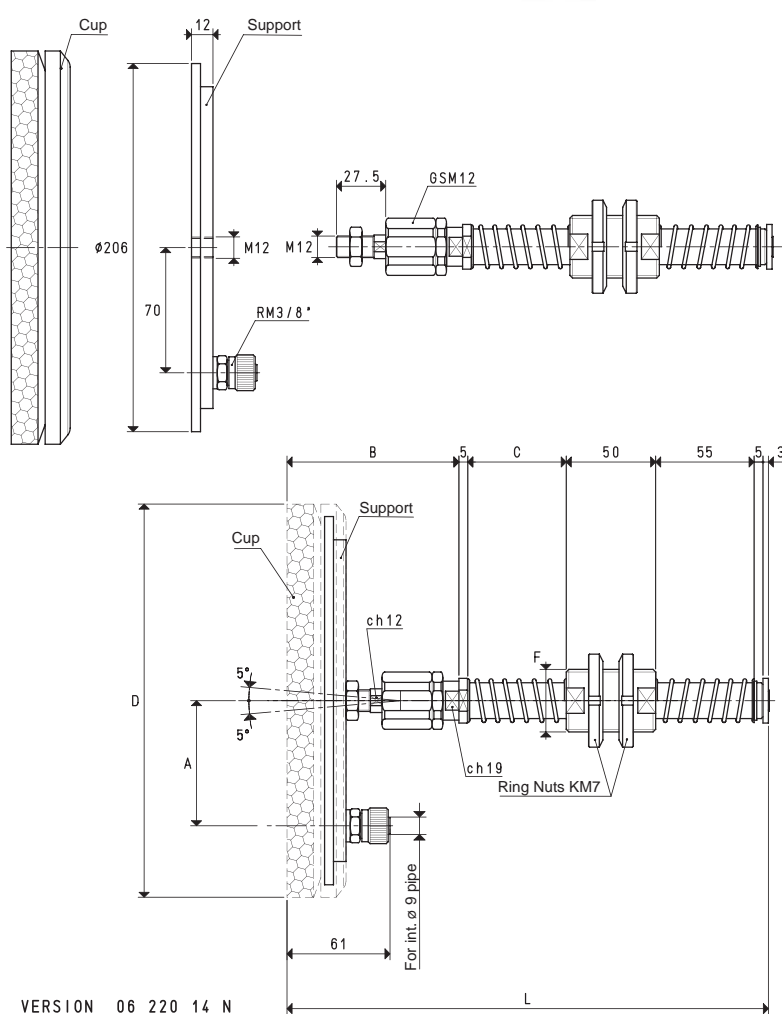


SPECIAL ARTICULATED CUP HOLDERS WITH DOUBLE SPRINGING



The actual springing stroke is:
 - For height C= 55 mm 37 mm
 - For height C= 110 mm 84 mm

2



CUP HOLDERS WITH STRAIGHT QUICK COUPLER FOR PLASTIC HOSE Ø 9 X 12

Art.	Force Kg	A	B	*C	D Ø	F Ø	L	Cup art.	Support included art.	C = 110 mm	
										Weight Kg	Weight Kg
06 220 14 OF	63.6	70	97	55	220	M35 x 1.5	270	01 220 10 OF	00 08 37	2.22	2.32
06 220 14 NF	63.6	70	97	55	220	M35 x 1.5	270	01 220 10 NF	00 08 37	2.21	2.31

Note: Cups are not an integral part of the cup holders, therefore, they must be ordered separately.

* Also available with height C of 110 mm

3D drawings available at www.vuototecnica.net

Conversion ratio: inch = $\frac{\text{mm}}{25.4}$; pounds = $\frac{\text{g}}{453.6}$ = $\frac{\text{Kg}}{0.4536}$

2.159

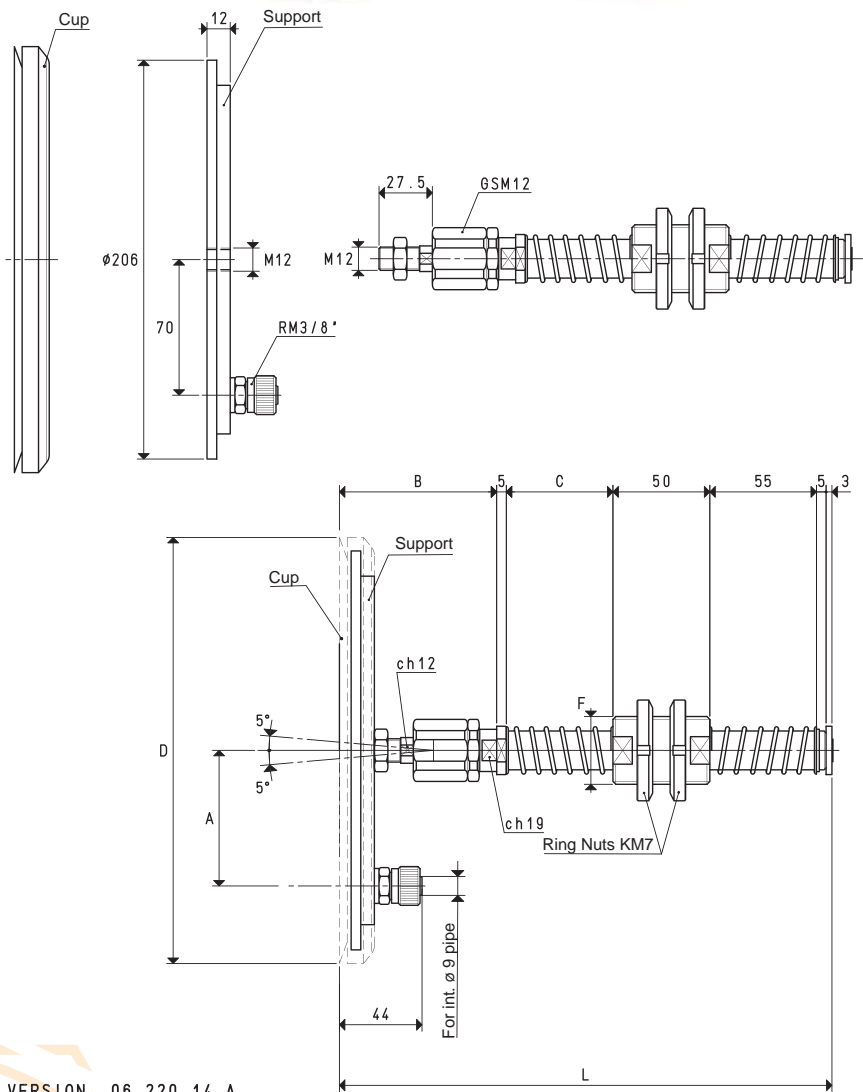


2



SPECIAL ARTICULATED CUP HOLDERS WITH DOUBLE SPRINGING

The actual springing stroke is:
- For height C= 55 mm 37 mm
- For height C= 110 mm 84 mm



VERSION 06 220 14 A

CUP HOLDERS WITH STRAIGHT QUICK COUPLER FOR PLASTIC HOSE Ø 9 X 12

C = 110 mm

Art.	Force Kg	A	B	*C	D Ø	F Ø	L	Cup art.	Support included art.	Weight Kg	Weight Kg
06 220 14 A	78.5	70	80	55	220	M35 x 1.5	253	01 220 10 A	00 08 37	2.17	2.27

Note: Cups are not an integral part of the cup holders, therefore, they must be ordered separately.

* Also available with height C of 110 mm

2.160

Conversion ratio: inch = $\frac{\text{mm}}{25.4}$; pounds = $\frac{\text{g}}{453.6}$ = $\frac{\text{Kg}}{0.4536}$



2

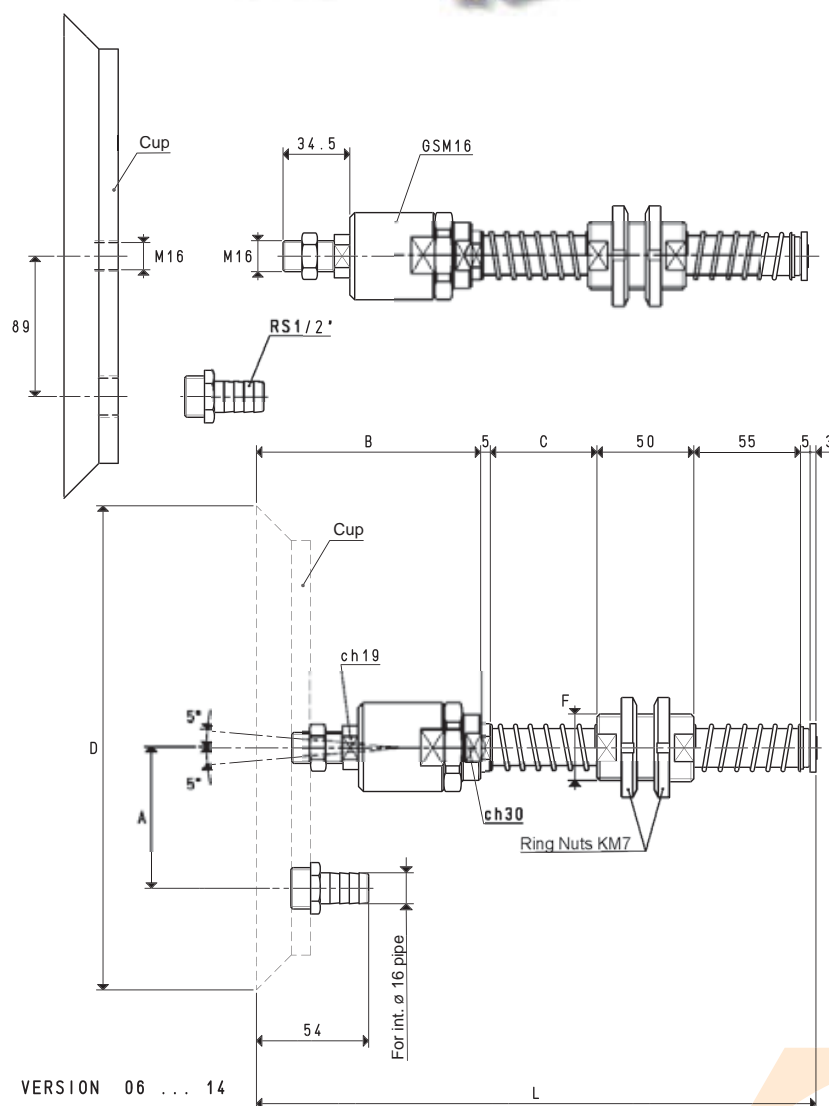


SPECIAL ARTICULATED CUP HOLDERS WITH DOUBLE SPRINGING



The actual springing stroke is:
 - For height C= 55 mm 37 mm
 - For height C= 110 mm 84 mm

2



PORTAVENTOSE CON PORTAGOMMA PER TUBO IN PLASTICA Ø 16 X 18

Art.	Force Kg	A	B	*C	D Ø	F Ø	L	Cup art.	C = 110 mm	
									Weight Kg	Weight Kg
06 300 14	176.6	89	115	55	300	M35 x 1.5	288	08 300 10	6.24	6.63
06 350 14	240.0	89	115	55	350	M35 x 1.5	288	08 350 10	8.10	8.22

Note: Cups are not an integral part of the cup holders, therefore, they must be ordered separately.

* Also available with height C of 110 mm

Conversion ratio: inch = $\frac{\text{mm}}{25.4}$; pounds = $\frac{\text{g}}{453.6}$ = $\frac{\text{Kg}}{0.4536}$

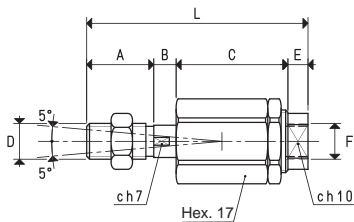


2

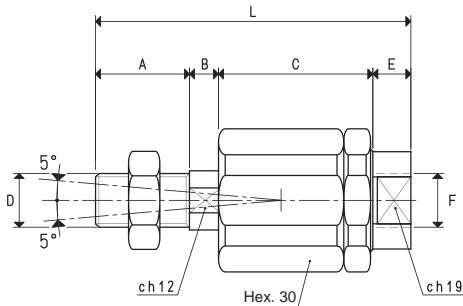


SPHERICAL ARTICULATED JOINTS

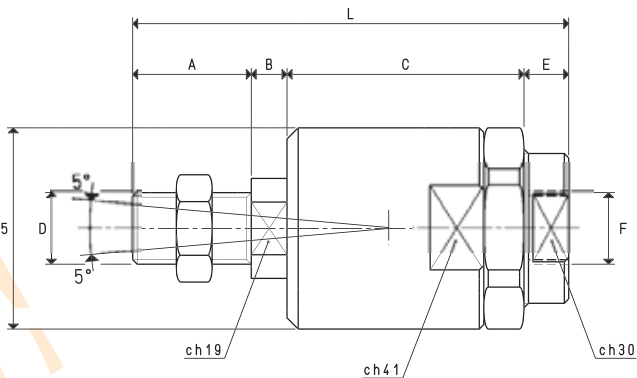
Our spherical articulated joints are made with hardened steel.
Assembled to the cup holders, they compensate offsets, orthogonality and flatness errors that often arise between the cups and the surface of the load to be lifted.



Art.	A	B	C	D	E	F	L	Weight
				Ø		Ø		g
GSM8	15	5	25	M8	4.5	M8	49.5	55



Art.	A	B	C	D	E	F	L	Weight
				Ø		Ø		g
GSM12	21	6.5	34.5	M12	8.5	M12	70.5	220



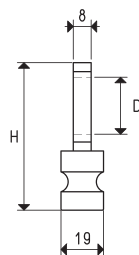
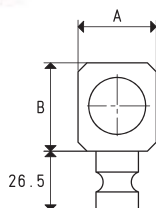
Art.	A	B	C	D	E	F	L	Weight
				Ø		Ø		g
GSM16	26.5	8	53	M16	10	M16	97.5	670

3D drawings available at www.vuototecnica.net

CUP HOLDER FIXING SUPPORTS

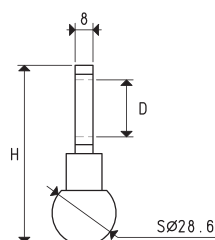
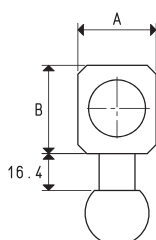
The first two supports shown in this page are made with stainless steel and are suited for fastening the cup holder to the machine by means of a slotted cylindrical pin or a spherical pin housed in the machine. The third support, on the other hand, is made with aluminium and it is composed of two parts that, screwed together, block the spherical joint, allowing to keep the cup holder in the desired position.

2



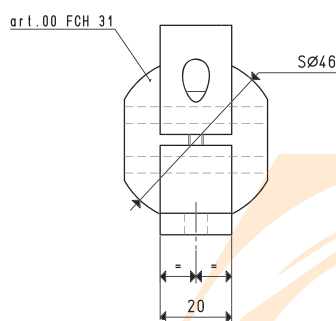
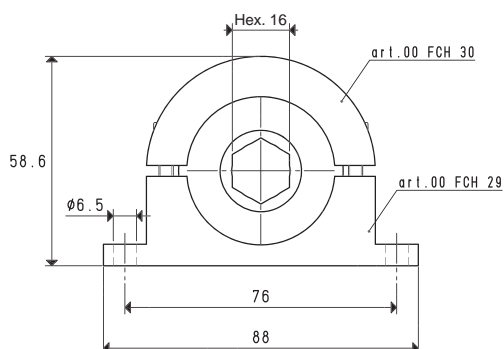
SUPPORTS WITH SLOTTED CYLINDRICAL PIN

Art.	A	B	D Ø	H	Cup holder	Weight g
00 FCH 10	35	39.5	25.5	79.5	special anti-rotation	102
00 FCH 11	30	33.5	20.5	73.5	basic	90



SUPPORTS WITH SPHERICAL PIN

Art.	A	B	D Ø	H	Cup holder	Weight g
00 FCH 20	35	39.5	25.5	79.5	special anti-rotation	168
00 FCH 21	30	33.5	20.5	73.5	basic	154



SUPPORTS WITH BUILT-IN SPHERICAL JOINT

Art.	Cup holder	Weight g
FCH 16	special anti-rotation	156

3D drawings available at www.vuototecnica.net

Conversion ratio: inch = $\frac{\text{mm}}{25.4}$; pounds = $\frac{\text{g}}{453.6}$ = $\frac{\text{Kg}}{0.4536}$

2.163

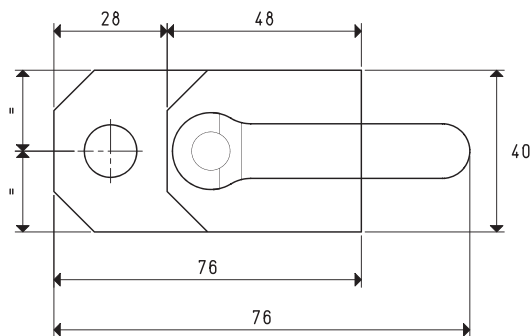
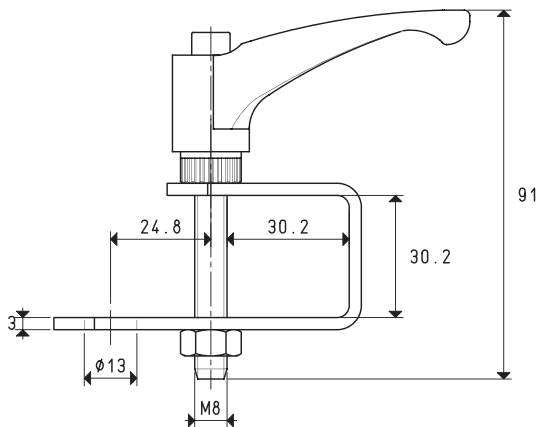


2



CUP HOLDER FIXING SUPPORTS

The supports decribed in the following in these pages are made with galvanised sheet steel and they are used to fasten the various types of cup holders to the machine, generally made up of a square tube frame. The screw or the handle with which they are equipped quickly block the support in position.



3D drawings available at www.vuototecnica.net

TUBULAR SUPPORT \varnothing 30			
Art.	Tubular section	Cup holder	Weight
	\varnothing		g
SFP 01	30	mini	160

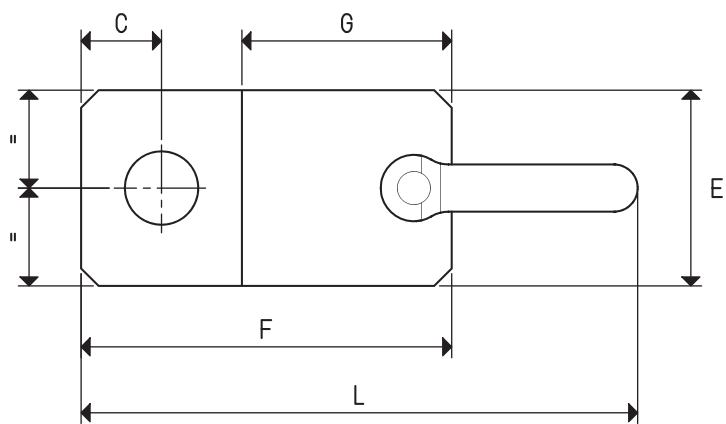
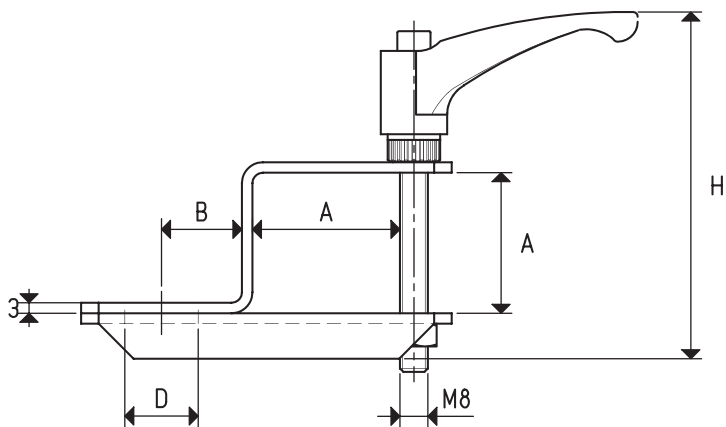
2.164

Conversion ratio: inch = $\frac{\text{mm}}{25.4}$; pounds = $\frac{\text{g}}{453.6}$ = 0.4536 Kg



2





TUBULAR SUPPORTS Ø 40 - 50

Art.	Tubular section Ø	A	B	C	D	E	F	G	H	L	Cup holder	Weight g
SFP 02	40	40.2	23	23	21	56	106	60	99	159	basic	350
SFP 03	40	40.2	23	23	25	56	106	60	99	159	special anti-rotation	338
SFP 04	40	40.2	30	30	36	70	120	60	99	173	special	438
SFP 05	50	50.2	23	23	21	56	116	70	109	169	basic	370
SFP 06	50	50.2	23	23	25	56	116	70	109	169	special anti-rotation	377
SFP 07	50	50.2	30	30	36	70	130	70	109	183	special	490

Conversion ratio: inch = $\frac{\text{mm}}{25.4}$; pounds = $\frac{\text{g}}{453.6}$ = $\frac{\text{Kg}}{0.4536}$