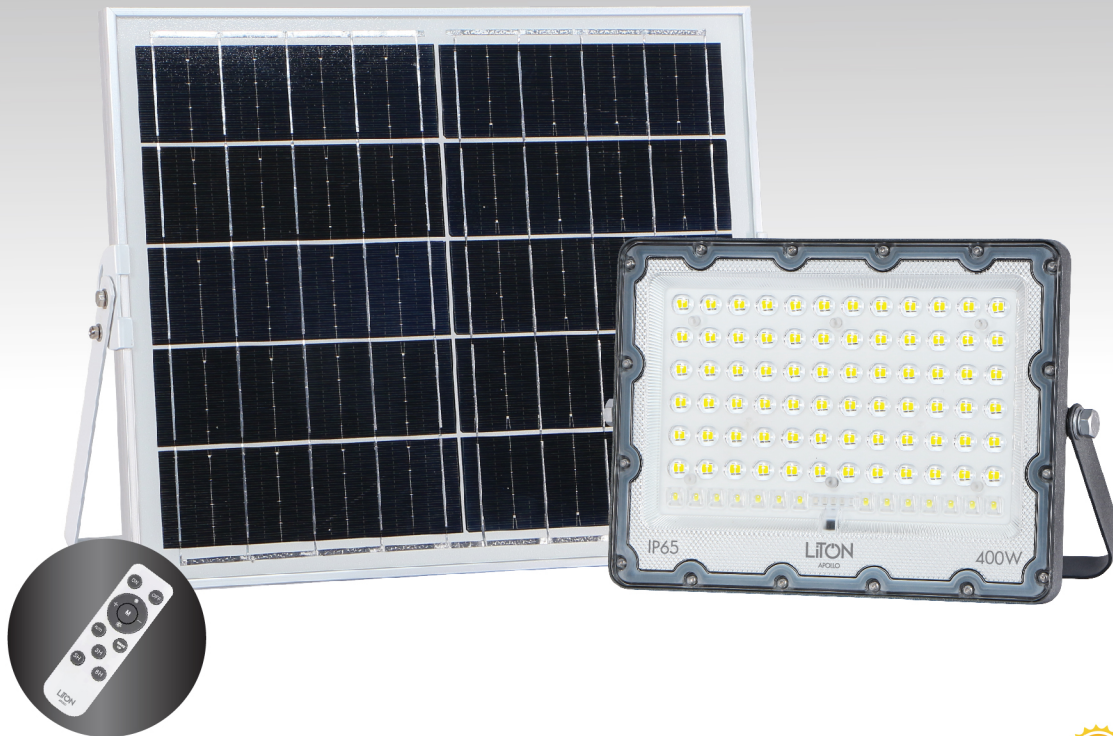


# LED ฟลัดไลท์ พลังงานแสงอาทิตย์ รุ่น APOLLO series



3,500 lm  
Lumen(max)

400W

WIRELESS  
REMOTE CONTROL



รหัสสินค้า Code	ชื่อสินค้า	ขนาดวัตต์ Power (w)	แสง Color	แผงโซลาร์
--------------------	------------	------------------------	--------------	-----------

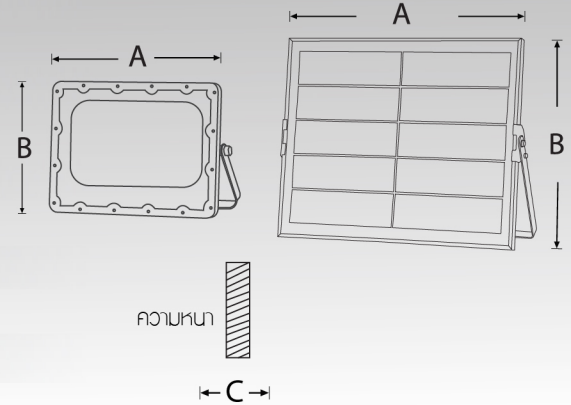
LTLSSM05NM025400GDL	SOLAR FLOOD LIGHT ( APOLLO )	400W	Daylight (6000 - 6500K)	5V/25W (Polysilicon solar panel)
---------------------	---------------------------------	------	----------------------------	-------------------------------------



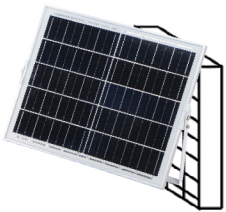
## General Information

Product	SOLAR FLOOD LIGHT (APOLLO)
SMD Chip	SMD2835 SANAN,158pcs
Battery	3.2V/ 20AH
Safety Class	N/A
IP Code	65
Lamp body information	Aluminum + PC
Body Color	Grey
Charge and discharge times	> 1,200 times
Solar panel	5V/25W
Charging	4-6 Hrs
Working duration	12-15 Hrs, 1-2 consecutive cloudy and rainy days
Control mode	intelligent remote control of 6 m + light-operated

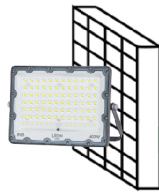
## Dimension



## Installation Guide



Use 2 expansion screws to fix the solar panels on the wall



Use 2 expansion screws to fix the solar lamp on the wall



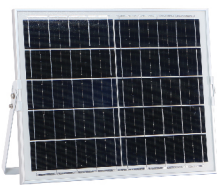
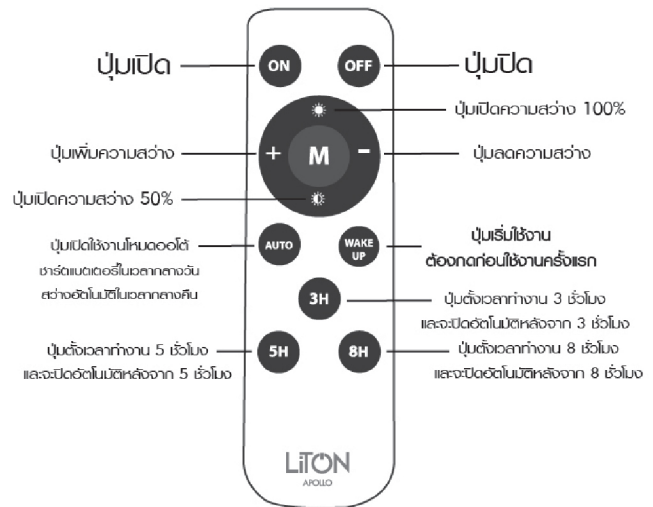
Plug the twist after the twist cap

**Tips** The battery must be fully charged before using 3-5 rainy days.

## Dimensions : mm. A B C

Lamp	253 X 172 X 44
Solar panel	350 X 450 X 17

## Remote control key instructions



Solar panel



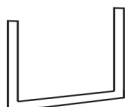
Solar light



Remote control



expansion screw



U-frame



5m wire