



NIDA FACTORY

GREY MOTHER OF PEARL INLAY

The most iconic grey mother of pearl—perfect for the expression of true love, a sense of femininity and protectiveness.



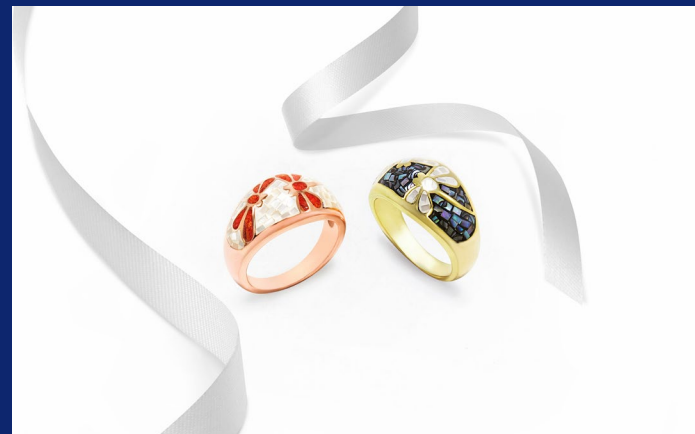
OUR COLLECTION

Because Nida's vision of harmonizing sterling silver with natural stone, we believe to enhance customer's personality through a unique modern style with natural materials such as mother of pearl, semi-precious stone, opaque stone and so on. Every piece is manufactured by hand in mosaic or inlay patterns, bringing its skill expertise and long tradition of impeccable craftsmanship into sharp focus.

With upholding 3 milestones, we manufacture by a small batch at a time to maintain the highest quality to our customer, shipping merchandise on time and sell at reasonable price.

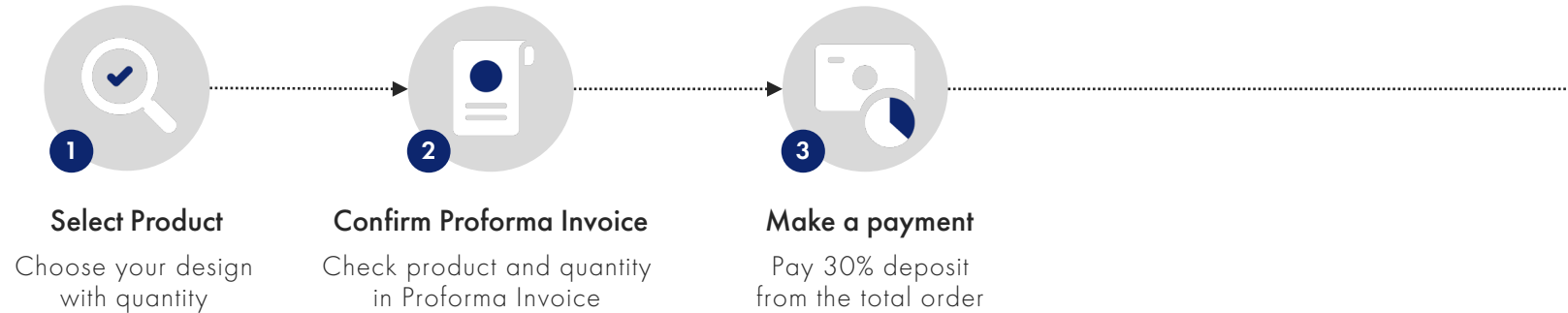
CATEGORY

- Inlay & Mosaic Collection
- Gemstone Collection
- Braided Collection
- Plain Collection

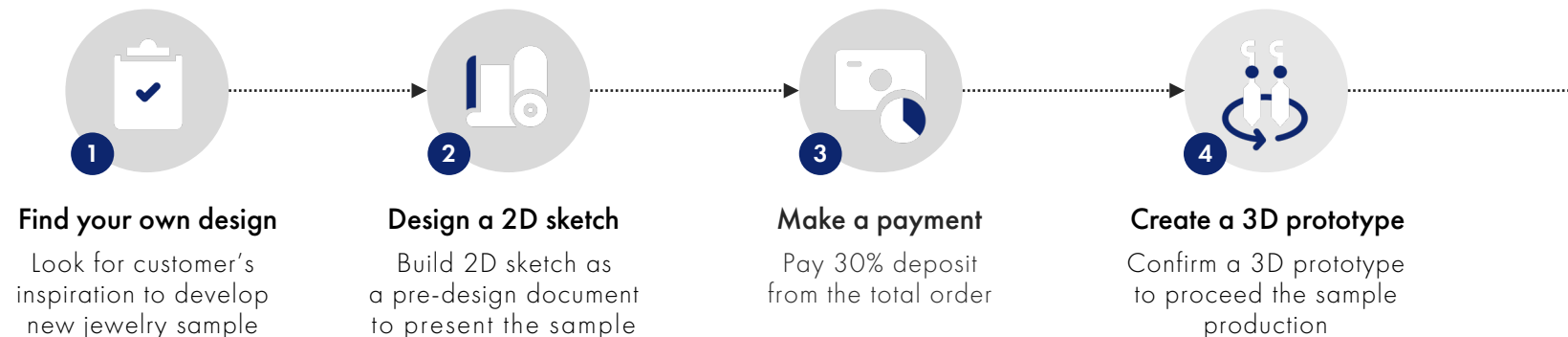


HOW TO ORDER

Retail Customer and Online Channel

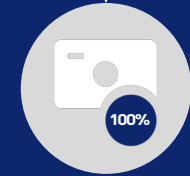


Your Own Custom Product Development



Manufacture product

Start manufacturing bulk order within 4-6 weeks



Make a balance payment

Pay 70% payment from the total order



Ship product

Arrange order and ship by Fedex, UPS, DHL and Kerry

WHY CHOOSE US?



Niche Market

Nida specializes in sterling silver and brass jewelry with natural stone setting such as mother of pearl, lapis, turquoise, tiger eye, black onyx, black spinel, coral, opal, jadeite, agate, etc. It is known for its attractive and extraordinary jewelry design for daily wear at affordable prices.



Conglomerate Services

With our conglomerate services in one place, we can adapt our production procedures to finish and delivery merchandise to customer on time.



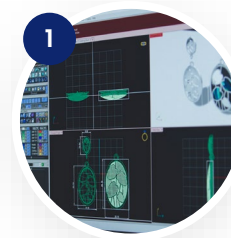
Flexible Procedures

Nida Factory has emphasized on customer-centric principle, achieving our customer satisfaction as our highest priority. Therefore, Nida maintains long-term business relationship with customer by responding swiftly to customer's need, changing sample design, flexible trade agreement, and market conditions. This flexibility leads to export top-notch silver and brass jewelry piece to over 50 countries and maintains solid business relationship with international retailers around the world.

EXPERIENCED
CRAFTMANSHIP

Each hand-finished pieces of Nida jewelry are crafted from highest-quality materials from Thailand and oversea. The company also makes pieces with cubic zirconia, gemstones, and diamond in plated jewelry. Highly skilled workers at its Bangkok manufacturing facility produce jewelry by creating the more delicate pieces and fine sterling silver with precious stone work by hand.

OUR SERVICE



CAD Drawing



Wax Craving



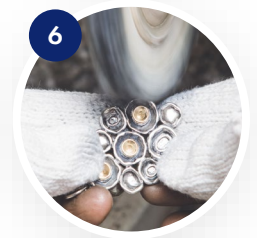
Hand Filling



Stone Setting



Genuine Stone / Synthetic
Stone Setting



Polishing



Precious Metal Plating



Enameling



Bead Stringing



2002

Debut the mosaic & inlay with sterling silver collections, Nida has known as the world-famous king of mosaic & inlay by cutting a fine mother-of-pearl work less than 1 mm and arranging tiny pieces into desired pattern on jewelry.



1984

Found in Pinklao Bangkok, Thailand by Mr. Surapon Lervisit, Nida Factory has moved a manufacturing facility from a local jewelry house to the official certified factory.



PRESENT

Expand range of jewelry product from mother-of-pearl materials, flash plating, and hand setting technique to opaque stone, micron plating, tube stamping, and wax setting technique. We keep developing a new style and innovation to ensure that we provide the finest piece to our customer.

Vision

We are manufacturer who seek to create the world-class jewelry and enhance a unique modern style under Nida brand

Mission

The company strives to support OEM & ODM principles by manufacturing under B2B conditions with quality, speed, and reasonable price

Target

Design, manufacture, distribute and sell within 2 weeks

Nida Factory Co., Ltd. 730,732,734,736,738,740 Boromratchonnane Rd.,
Bangbamru, Bangplad, Bangkok 10700 Thailand.

☎ 02-434-2166

☎ 02-881-8778

✉ nidasales@nidafactory.com