

# ***ELECTRICAL SUPPLY RAIL TECHNICAL SPECIFICATION***

**MOBILIS**  
ELITE



# COMPOSITION OF A MOBILIS ELITE LINE

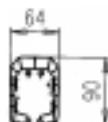


## MOBILIS ELITE

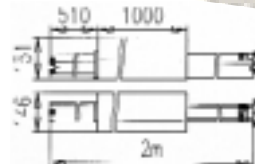
### LINE ELEMENT



Self-extinguishing PVC  
 Standard length 4m, 2m, 1m  
 Special length on request  
 Max. rated operational voltage : 750 V  
 References hereunder



### EXPANSION JOINT



To install in the middle of lines longer than 140m, please enquire  
 IP23  
 References hereunder

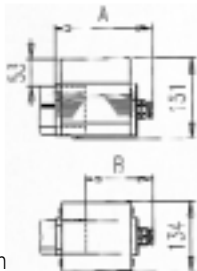
Intensity	20A		40A		60A		100A		130A		200A	
Conductor section	steel 16 mm <sup>2</sup>		copper 10 mm <sup>2</sup>		copper 16 mm <sup>2</sup>		copper 24 mm <sup>2</sup>		copper 35 mm <sup>2</sup>		copper 70 mm <sup>2</sup>	
Impedance at 50Hz	0,0116 Ohm/m		0,0017 Ohm/m		0,0012 Ohm/m		0,00077 Ohm/m		0,00056 Ohm/m		0,00026 Ohm/m	
Pole number	4	5	4	5	4	5	4	5	4	5	4	5
Weight (kg/m)	1,7	1,8	1,5	1,6	1,8	1,9	2,0	2,1	2,4	2,7	3,7	4,2
Length 4 m	ME4204	ME5204	ME4404	ME5404	ME4604	ME5604	ME4104	ME5104	ME4134	ME5134	ME8284	ME8285
Length 2 m	ME4202	ME5202	ME4402	ME5402	ME4602	ME5602	ME4102	ME5102	ME4132	ME5132	ME8282	ME8286
Length 1 m	ME4201	ME5201	ME4401	ME5401	ME4601	ME5601	ME4101	ME5101	ME4131	ME5131	ME8281	ME8287
Special length	ME4200	ME5200	ME4400	ME5400	ME4600	ME5600	ME4100	ME5100	ME4130	ME5130	ME8280	ME8288
Expansion joint	ME8020	ME8520	ME8040	ME8540	ME8060	ME8560	ME8100	ME8510	ME8013	ME8513	ME8290	ME8291

### END-LINE FEED-BOX M25/M32/M40



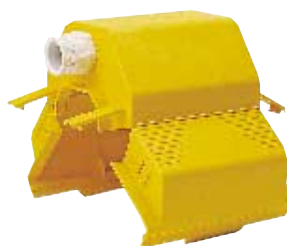
Thermoplastic  
 Self-extinguishing  
 IP 23  
 Intensities 20, 40, 60, 100A

Possibility PG outgoing down  
 Collector trolley inaccessible zone : 35 mm  
 Weight 0,4 kg  
 Please provide cable eye stiffeners Ø 5 for connection



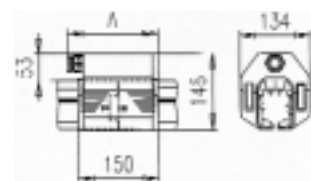
	Dimension A	Dimension B	References	Cable ø
M25	181	126	ME 1200	13 to 19 mm
M32	183	128	ME 1230	15 to 25 mm
M40	187	132	ME 1250	21 to 32 mm

### IN-LINE FEED-BOX M25/M32



Thermoplastic - Self-extinguishing  
 IP 23  
 Intensities 20, 40, 60, 100A

Weight 0,3 kg  
 Please provide cable eye stiffeners Ø 5 for connection



	Dimension A	References	Cable ø
M25	169	ME 1300	13 to 19 mm
M32	171	ME 1330	15 to 25 mm

### IN-LINE FEED-BOX M40



For the intensities 20, 40, 60 and 100A

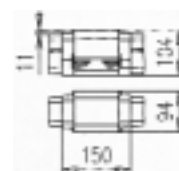
IP23  
 Cable ø 21 to 32 mm  
 Weight 1,5 kg  
 References : (4P) ME1332 - (5P) ME1329



### COVERING FLANGE



Thermoplastic  
 Self-extinguishing  
 IP 23  
 Weight 0,2 kg  
 Reference : ME1000



## FEED-BOX 130A AND 200A



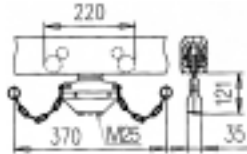
Premounted on 1 m line element  
IP23 - Weight  $\approx$  10 kg (This weight includes the connecting cables, length 2 m)  
Use 2 hangers.

Intensity	4 poles	5 poles	4 or 5 cables $\phi$	Section	Dim. A
130A	ME1313	ME1317	10.5 mm	35 mm <sup>2</sup>	170
200A	ME8299	ME8294	14.4 mm	70 mm <sup>2</sup>	220

## SIMPLE TROLLEY WITH BOX



Self-extinguishing  
Nom. Intensity 40A  
Connection with a flexible cable  
Terminal 6 mm<sup>2</sup>  
Weight 0,6 kg

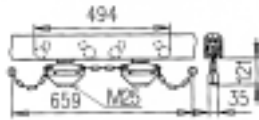


References : (4P) ME3043  
(5P) ME3051

## DOUBLE TROLLEY WITH BOX



Nom. Intensity 80A  
Connection with 2 flexible cables  
Terminal 6 mm<sup>2</sup>  
Weight 1,1 kg



References : (4P) ME4042  
(5P) ME4050

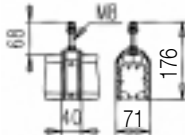
## STATIONARY USE OF THE TROLLEYS

Simple trolley	Double trolley	Triple trolley
40 sec. at 40A	40 sec. at 80A	40 sec. at 120A
5 min. at 30A	5 min. at 60A	5 min. at 90A
30 min. at 20A	30 min. at 40A	30 min. at 60A
24 h. at 16A	24 h. at 32A	24 h. at 48A

## SLIDING HANGER



Prelacquered steel  
Screw M8 x 60 premounted  
Intensities 20 to 130A : 2 pieces for a 4m element  
Intensity 200A : 3 pieces for a 4m element  
Weight 0,1 kg

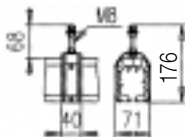


Reference : ME1510

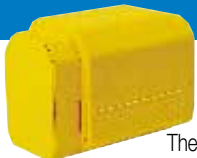
## FIXED HANGER



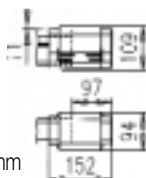
Prelacquered steel fully assembled  
Delivered with 4 anchoring screws  
Weight 0,1 kg  
Reference : ME1500



## END-CAP



Thermoplastic Self-extinguishing  
IP 23  
Collector trolley inaccessible zone : 35 mm  
Weigh 0,3 kg  
Reference : ME1400



## SIMPLE TROLLEY WITH CABLE



Self-extinguishing  
Connecting cable 4 x 4 mm<sup>2</sup>  
or 5 x 4 mm<sup>2</sup> - Length 1m  
Weight 1,1 kg

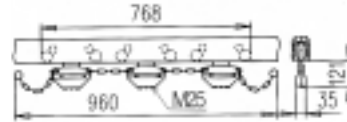
Type	References		Weight
Simple	(4P) ME2043	(5P) ME2051	1,1 kg
Double	(4P) ME4047-1M	(5P) ME4051	2,2 kg
Triple	(4P) ME5049-1M	(5P) ME5059-1M	3,3 kg

Nominal Intensity and dimensions identical to collector trolleys with box

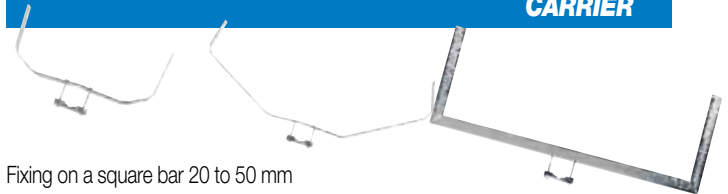
## TRIPLE TROLLEY WITH BOX



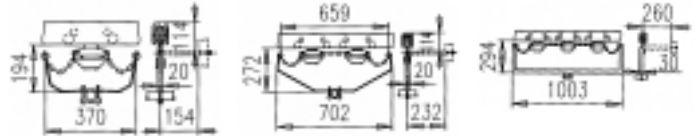
Nom. Intensity 120A  
Connection through 3 flexible cables  
Terminal 6 mm<sup>2</sup>  
Weight 1,6 kg  
References : (4P) ME5040  
(5P) ME5050



## CARRIER



Fixing on a square bar 20 to 50 mm  
Admissible clearance : horizontal +/- 50 mm; vertical +/- 50 mm

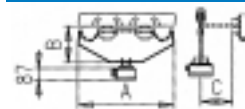


Simple carrier for simple trolley  
Weight 0,6 kg  
Reference : ME1600

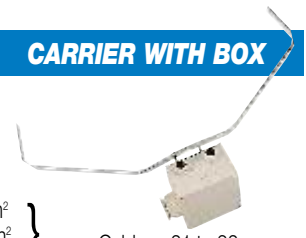
Double carrier for double trolley  
Weight 1,1 kg  
Reference : ME1610

Triple carrier for triple trolley  
Weight 2,6 kg  
Reference : ME1630

## CARRIER WITH BOX



simple trolley with a cable up to 5 x 16 mm<sup>2</sup>  
double trolley with a cable up to 5 x 16 mm<sup>2</sup>  
triple trolley with a cable up to 5 x 25 mm<sup>2</sup>



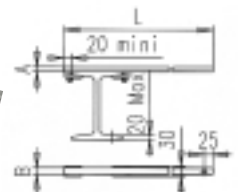
Cable  $\phi$ : 21 to 32 mm

Type	References		A	B	C	Weight
Simple	(4P) ME1660	(5P) ME1660	370	194	154	1,4 kg
Double	(4P) ME1640	(5P) ME1645	702	272	232	1,9 kg
Triple	(4P) ME1650	(5P) ME1655	1003	294	260	3,4 kg

## FIXING BRACKET



Galvanized steel  
For intensity 200A, please only use ME1760 and ME1780



References	Length L	Section A x B	Weight
ME1700	380 mm	15 x 20 mm	0,5 kg
ME1750	500 mm	15 x 20 mm	0,6 kg
ME1760	600 mm	30 x 30 mm	1,0 kg
ME1780	850 mm	30 x 30 mm	1,2 kg

## OUR RANGE ALSO INCLUDES

- Inlet gates: enable the insertion or removal of collector trolleys for maintenance.
- Curves: available from 800 mm minimum radius.
- Protection lips: flexible seals fitted to the running slot in the profile to prevent ingress of dust or moisture in harsh environments.
- High speed trolleys: for applications with speeds exceeding 100 mts/min.
- Articulated trolleys: for applications with curves less than 1.5 mtr radius.
- Cleaning trolleys: fitted with brushes to clean the conductors in harsh environments, or outside.
- Ventilation elements to avoid the condensation between a warm section and a cold section.
- Elements with circuit interruption.
- Transfer elements for switches.

### System operating temperatures

- -20°C to +40°C Standard profile, current ratings as stated.
- +40°C to +55°C reduce current ratings of conductors by 15%.
- +55°C to +75°C High temperature profile available. Please enquire.

*\*For any other special installations, please enquire to our sales office.*

*Reproduction is not allowed of any part of the information contained herein without the written authorization of FELS S.A. - ILLKIRCH-GRAFFENSTADEN.*

*As we are continually striving to improve our products,  
we reserve the right to make any modifications without prior warning.*

# TITAN<sup>®</sup>

TITAN CRANE CO., LTD.

1/19 หมู่ 1 ต.พิมพา อ.บางปะกง จ.ฉะเชิงเทรา 24180

โทร. +66 (038) 571 666-9 แฟกซ์ : +66 (038) 571 665

1/19 MOO 1 PIMPA, BANGPAKONG, CHACHOENSAO 24180

Tel. +66 (038) 571 666-9 Fax : +66 (038) 571 665

www.titancrane.co.th E-mail : titanemail@yahoo.com