

# PROCESSING

## FIND IT FAST

JARVIS® PAS Stunners and Parts .....	414-422
Stun Tester and Cleaning Tools .....	423
JARVIS® Pneumatic Stunners .....	424-425
Pneumatic Stun Tester .....	425
Body Protection and Rattle Paddles .....	426
Cattle Prods .....	427
Pneumatic Dehider, Skinner and Circular Saw .....	428
Kromer™ Balancers .....	429
Wellsaws and Parts .....	430-433
Breaking Saws .....	434
Splitting Bandsaw .....	435
Rail Switches .....	436-437
VGK Trolley System .....	438
Trolleys .....	439
Hooks, Meat Trees, Gambrels and Shackles .....	440
Weasand Clips, Rings, Plugs and Pliers .....	441
Processing Tags .....	442
Tagging Systems and Marking Supplies .....	443
Handsaws and Hand Tools .....	444
Hog Scrapers, Paddles, Whips and Supplies .....	445
Plumatech Picking Fingers, Supplies and Gaskets .....	446-447
Stamps, Inks and Tattoo Accessories .....	448-449
Skinner Rollers, Pinch Blocks, Cones and Rings .....	450



# Power Actuated Stunners (PAS) TYPE-P Standard Bolt

# JARVIS

MADE IN  
USA



## PAS-PS 22R

.22 Caliber, STANDARD BOLT

## PAS-PS 25

.25 Caliber, STANDARD BOLT

- Comfortable, ergonomically designed handle.
- Diverse applications, from smaller to larger sized livestock.
- Renders animal insensible to pain before slaughter.
- Simple to use, operate and maintain.
- Ruggedly built for long service life.
- Different cartridge strengths available, depending on usage.
- Includes case and cleaning tools.



Scan this QR code with your mobile device to watch a video about PAS-TYPE P Stunner Maintenance



ITEM NO.	PRODUCT	JARVIS NO.	EACH
3028 77041	PAS-PS-22, Standard Bolt .22 Cal.	4144150	CALL
3028 35911	PAS-PS-25, Standard Bolt .25 Cal.	4144152	FOR
3028 77981	PAS-P Replacement Stunner Case	3161009	PRICING

## Concussion Head Assembly



- Uses a non-penetrating head to strike a powerful blow to the head of small animals for instantaneous euthanasia.
- Designed for small animals only, such as swine up to 60 pounds, turkeys of all sizes, chickens, rabbits, ducks and geese.

ITEM NO.	PRODUCT	JARVIS NO.	EACH
3028 77201	Concussion Bolt Assembly	3116606	CALL

## PAS-PS 22R

Suggested Cartridges: Caliber .22R

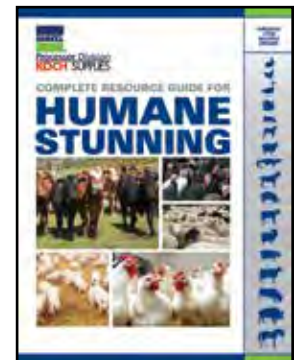
ITEM NO.	DESCRIPTION .22R	ROUNDS/PKG	CARTRIDGES	JARVIS NO.	APPLICATIONS
3028 35595	Pink Cartridge, 1.25 Grain	1,000		1176003	
3028 35635	Pink Cartridge, 1.25 Grain	50		1176004	Poultry, Lambs, Piglets and Sheep
3028 77125	Purple Cartridge, 2.5 Grain	1,000		1176005	
3028 36045	Purple Cartridge, 2.5 Grain	50		1176006	Hogs and Small Cattle
3028 77195	Green Cartridge, 3.0 Grain	1,000		1176007	
3028 35645	Green Cartridge, 3.0 Grain	50		1176008	Hogs, Sows, Boars and Fat Cattle

## PAS-PS 25

Suggested Cartridges: Caliber .25

ITEM NO.	DESCRIPTION .25	ROUNDS/PKG	CARTRIDGES	JARVIS NO.	APPLICATIONS
3028 77225	Pink Cartridge, 1.25 Grain	1,000		1176013	
3028 77285	Pink Cartridge, 1.25 Grain	50		1176014	Poultry, Piglets and Sheep
3028 35765	Yellow Cartridge, 2.0 Grain	1,000		1076029	
3028 35785	Yellow Cartridge, 2.0 Grain	50		1176016	Hogs and Small Cattle
3028 77095	Blue Cartridge, 3.0 Grain	1,000		1176017	
3028 77265	Blue Cartridge, 3.0 Grain	50		1176018	Hogs, Sows, Boars and Fat Cattle

CAUTION: Do not exceed cartridge strength for prescribe usage.



Refer to our  
**HUMANE STUNNING**  
CATALOG for more  
information

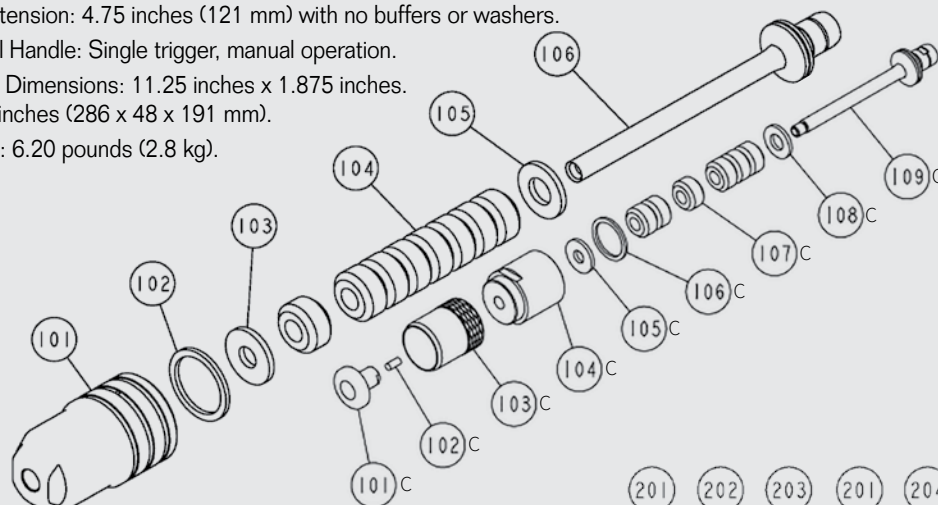
JARVIS®



# PAS-PS Replacement Parts

## PAS Type-P Specs:

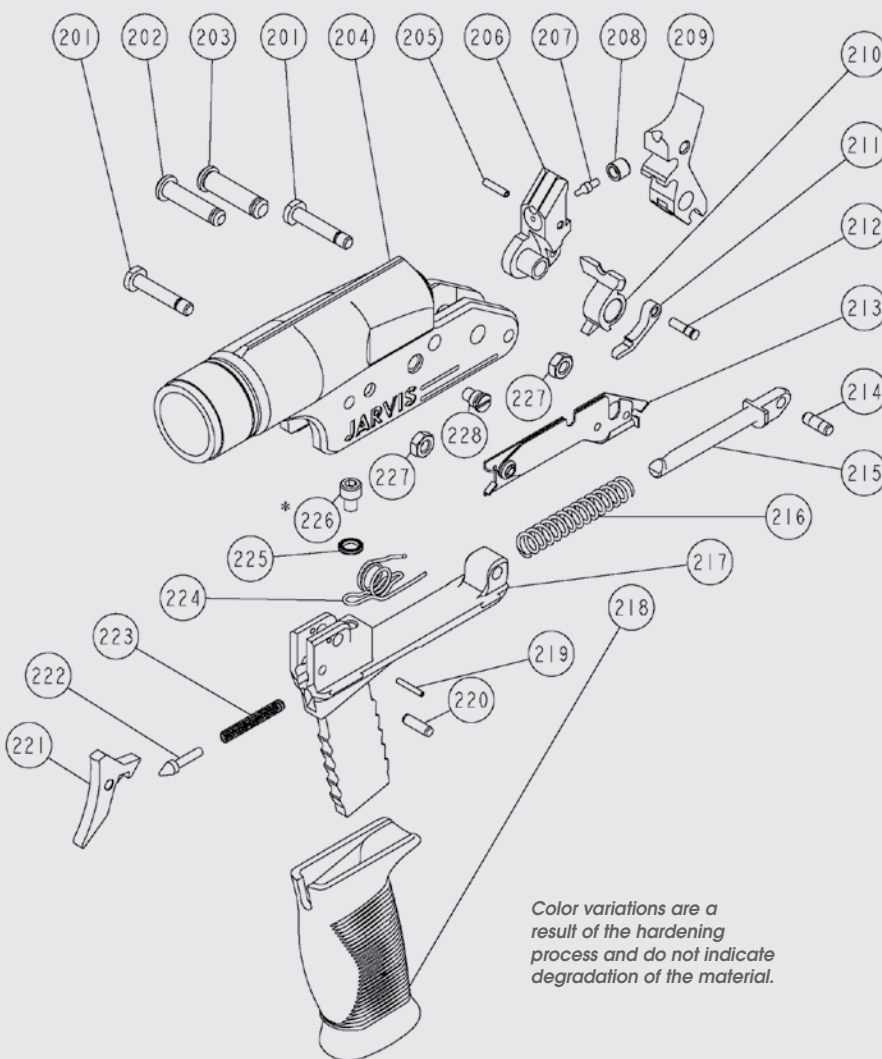
- Penetrating Shaft Diameter: 0.45 inches (11.4 mm).
- Bolt Extension: 4.75 inches (121 mm) with no buffers or washers.
- Control Handle: Single trigger, manual operation.
- Overall Dimensions: 11.25 inches x 1.875 inches.  
x 7.47 inches (286 x 48 x 191 mm).
- Weight: 6.20 pounds (2.8 kg).



CONCUSSION HEAD REPLACEMENT PARTS			
ITEM NO.	JARVIS NO.	DESCRIPTION	
101C	3028 78291	1165094	Piston
102C	3028 77561	1114228	Rubber Spring
103C	3028 78791	1109214	Sleeve
104C	3028 37151	1111498	Coupling
105C	3028 36071	1104536	Red Bumper Washer
106C	3028 77461	1104539	Nosepiece Lock Washer
107C	3028 77051	1171577	Stunning Rod Sleeve
108C	3028 77491	1104537	Blue Bumper Washer
109C	3028 77741	1120533	Stunning Rod

ITEM NO.	JARVIS NO.	DESCRIPTION	QTY. REQ.	
101	3028 78241	1116940	Nosepiece Housing	1
102	3028 77461	1104539	Nosepiece Lock Washer	1
103	3028 36071	1104536	Red Bumper Washer	1
104	3028 77051	1171577	Stunning Rod Bumper	8
105	3028 77491	1104537	Blue Bumper Washer	1
106	3028 77441	1120507	Stunning Rod	1

ITEM NO.	JARVIS NO.	DESCRIPTION	QTY. REQ.	
201	3028 77801	1154257	Handle Retaining Bolt	2
202	3028 78301	1110616	Firing Block Pivot Pin	1
203	3028 78261	1110618	Hammer Pivot Pin	1
204C	3028 37171	3116603	Receiver Housing .25 S	1
204B	3028 36761	3116602	Receiver Housing .25 R	1
204A	3028 37181	3116601	Receiver Housing .22 R	1
205	3028 78361	1110250	Roll Pin	1
206	3028 36771	3161001	Firing Block (w/o Dog)	1
207	3028 78161	1110617	Firing Pin	1
208	3028 78371	1136001	Firing Block Bushing	1
209	3028 36781	1118182	Hammer	1
210	3028 77601	1171582	Extractor .25	1
210A	3028 77711	1171579	Extractor .22	1
211	3028 77941	1118181	Dog	1
212	3028 78171	1145030	Dog Rivet	1
213	3028 77661	3132042	Catch Plate Assembly	1
214	3028 78281	1110620	Release Pin Dowel	1
215	3028 77671	1110619	Release Pin	1
216	3028 77511	1114253	Release Pin Spring	1
217	3028 78781	1119301	Handle	1
218	3028 77841	1102775	Handle Cover	1
219	3028 78491	1110239	Roll Pin	1
220	3028 78451	1110633	Trigger Pivot Pin	1
221	3028 77921	1118183	Trigger	1
222	3028 78441	1110621	Trigger Pin	1
223	3028 78381	1114251	Trigger Return Spring	1
224	3028 77381	1114252	Ejector Spring	1
225	3028 78551	1104001	Ribbed Lock Washer (pair)	1
226	3028 78561	1173289*	Socket Head Cap Screw	1
227	3028 77951	1107493	Hex Nut	2
228	3028 78621	1154258	Trip Screw	1



*Color variations are a result of the hardening process and do not indicate degradation of the material.*

ITEM NO.	JARVIS NO.	DESCRIPTION	QTY. REQ.	
214-215	3028 36501	3110009	Release Pin Assembly	1
205-208/211-212	3028 36791	3161561	Firing Block and Dog Assembly	1
205/207/208	3028 36161	3110001	Firing Pin Assembly	1

ITEM NO.	JARVIS NO.	STANDARD REPLACEMENT PARTS AVAILABLE	
216S	3028 77781	1114254	Standard Release Pin Spring
214S/215S	3028 77701	3110010	Standard Release Pin Assembly
214S	3028 78151	1110622	Standard Release Pin Dowel
209S	3028 78201	1118002	Standard Hammer

JARVIS PAS REPLACEMENT PARTS

PRICES ARE SUBJECT TO CHANGE • MINIMUMS MAY APPLY • VISIT OUR WEBSITE FOR CURRENT PRICING.

# Power Actuated Stunners (PAS) TYPE-P Heavy-Duty

# JARVIS

MADE IN USA



## PAS-PHDS 25R

.25 Caliber, HEAVY-DUTY STANDARD BOLT



## PAS-PHDL 25R

.25 Caliber, HEAVY-DUTY LONG BOLT

- Diverse applications, from smaller to larger sized livestock.
- Renders animal insensible to pain before slaughter.
- Simple to use, operate and maintain.
- Ruggedly built for long service life.
- Different cartridge strengths available, depending on usage.
- Comfortable, ergonomically designed handle.
- Includes case and cleaning tools.
- Type-PHDS – Standard length bolt.
- Type-PHDL – Longer length bolt for deeper skull penetration.



Carrying case and cleaning tools included.

ITEM NO.	PRODUCT	JARVIS NO.	EACH
3028 77001	PAS-PHDS 25R, Heavy-Duty Standard Bolt .25 Cal . . .	4144155. . . . .	CALL
3028 77011	PAS-PHDL 25R, Heavy-Duty Long Bolt .25 Cal . . . . .	4144132. . . . .	FOR
3028 77981	PAS-P Replacement Stunner Case . . . . .	3161009. . . . .	PRICING

Scan this QR code with your mobile device to watch a video about PAS-TYPE P Stunner Maintenance

## PAS-PHDS & PHDL 25R

Suggested Cartridges: Caliber .25R

ITEM NO.	DESCRIPTION .25R	ROUNDS/PKG	CARTRIDGES	JARVIS PART #	APPLICATIONS
3028 77225	Pink Cartridge, 1.25 Grain	1,000		1176013	
3028 77285	Pink Cartridge, 1.25 Grain	50		1176014	Poultry, Piglets and Sheep
3028 77275	Yellow Cartridge, 2.0 Grain	1,000		1176015	
3028 77735	Yellow Cartridge, 2.0 Grain	50		1176016	Hogs and Small Cattle
3028 77095	Blue Cartridge, 3.0 Grain	1,000		1176017	
3028 77265	Blue Cartridge, 3.0 Grain	50		1176018	Hogs, Sows, Boars and Fat Cattle
3028 77085	Orange Cartridge, 3.5 Grain	1,000		1176019	
3028 77245	Orange Cartridge, 3.5 Grain	50		1176020	Hogs, Sows, Boars and Fat Cattle

CAUTION: Do not exceed cartridge strength for prescribe usage.

### Concussion Head Assembly

- Uses a non-penetrating head to strike a powerful blow to the head of small animals for instantaneous euthanasia.
- Designed for small animals only, such as swine up to 60 pounds, turkeys of all sizes, chickens, rabbits, ducks and geese.

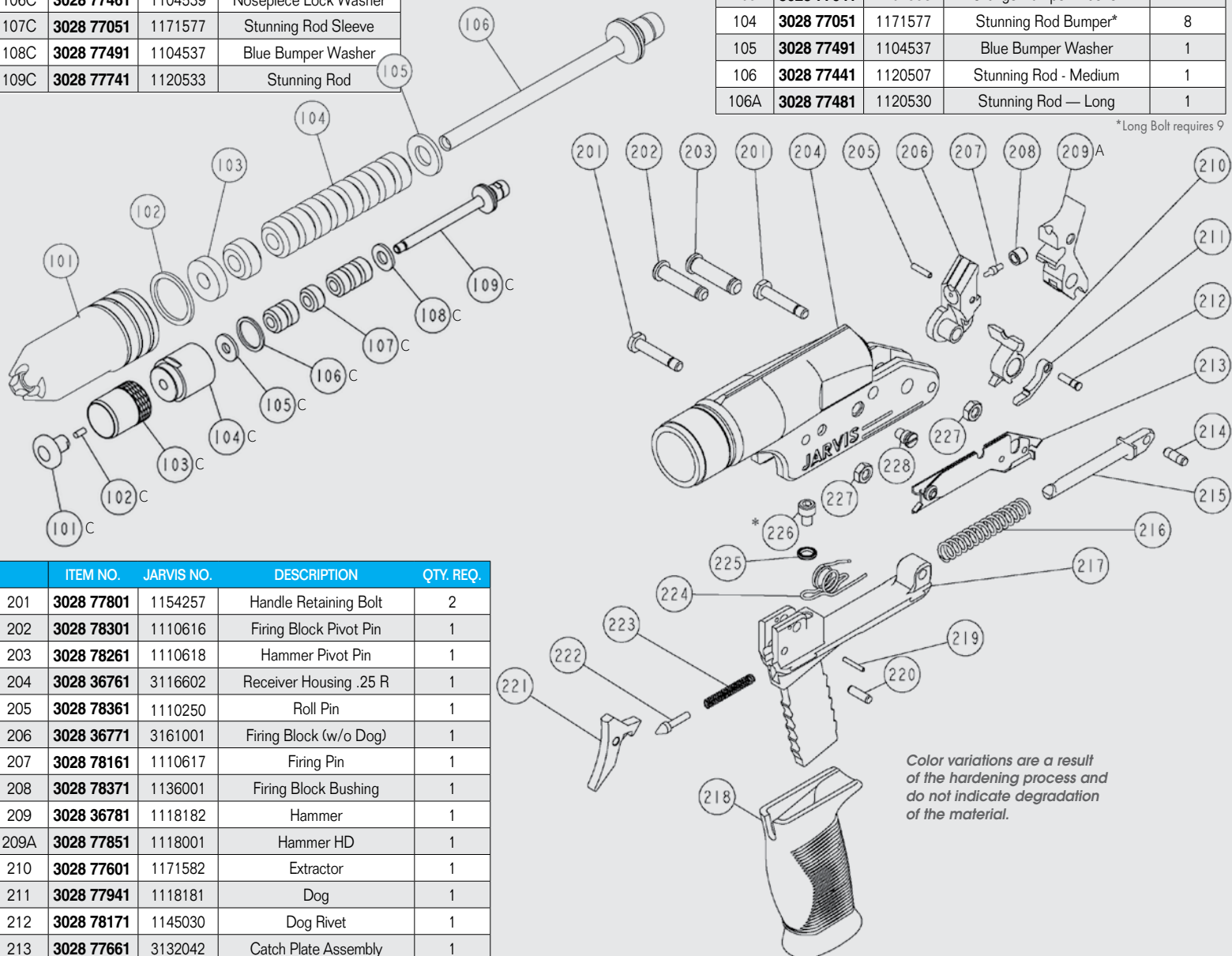
ITEM NO.	JARVIS NO.	EACH
3028 77201	3116606. . . . .	CALL



CONCUSSION HEAD REPLACEMENT PARTS			
ITEM NO.	JARVIS NO.	DESCRIPTION	
101C	3028 78291	1165094	Piston
102C	3028 77561	1114228	Rubber Spring
103C	3028 78791	1109214	Sleeve
104C	3028 37151	1111498	Coupling
105C	3028 36071	1104536	Red Bumper Washer
106C	3028 77461	1104539	Nosepiece Lock Washer
107C	3028 77051	1171577	Stunning Rod Sleeve
108C	3028 77491	1104537	Blue Bumper Washer
109C	3028 77741	1120533	Stunning Rod

ITEM NO.	JARVIS NO.	DESCRIPTION	QTY. REQ.	
101	3028 77911	1116986	Nosepiece Housing — Medium	1
101A	3028 77991	1116985	Nosepiece Housing — Long	1
102	3028 77461	1104539	Nosepiece Lock Washer	1
103	3028 77641	1104536	Orange Bumper Washer	1
104	3028 77051	1171577	Stunning Rod Bumper*	8
105	3028 77491	1104537	Blue Bumper Washer	1
106	3028 77441	1120507	Stunning Rod - Medium	1
106A	3028 77481	1120530	Stunning Rod — Long	1

\*Long Bolt requires 9



Color variations are a result of the hardening process and do not indicate degradation of the material.

ITEM NO.	JARVIS NO.	DESCRIPTION	QTY. REQ.	
201	3028 77801	1154257	Handle Retaining Bolt	2
202	3028 78301	1110616	Firing Block Pivot Pin	1
203	3028 78261	1110618	Hammer Pivot Pin	1
204	3028 36761	3116602	Receiver Housing .25 R	1
205	3028 78361	1110250	Roll Pin	1
206	3028 36771	3161001	Firing Block (w/o Dog)	1
207	3028 78161	1110617	Firing Pin	1
208	3028 78371	1136001	Firing Block Bushing	1
209	3028 36781	1118182	Hammer	1
209A	3028 77851	1118001	Hammer HD	1
210	3028 77601	1171582	Extractor	1
211	3028 77941	1118181	Dog	1
212	3028 78171	1145030	Dog Rivet	1
213	3028 77661	3132042	Catch Plate Assembly	1
214	3028 78281	1110620	Release Pin Dowel	1
215	3028 77671	1110619	Release Pin	1
216	3028 77511	1114253	Release Pin Spring	1
217	3028 78781	1119301	Handle	1
218	3028 77841	1102775	Handle Cover	1
219	3028 78491	1110239	Roll Pin	1
220	3028 78451	1110633	Trigger Pivot Pin	1
221	3028 77921	1118183	Trigger	1
222	3028 78441	1110621	Trigger Pin	1
223	3028 78381	1114251	Trigger Return Spring	1
224	3028 77381	1114252	Ejector Spring	1
225	3028 78551	1104001	Ribbed Lock Washer (Pair)	1
226	3028 78561	1173289*	Socket Head Cap Screw	1
227	3028 77951	1107493	Hex Nut	2
228	3028 78621	1154258	Trip Screw	1

## PAS-PHDS and PAS-PHDL Replacement Parts

### PAS Type-P Specs:

- Penetrating Shaft Diameter: 0.45 inches (11.4 mm).
- Bolt Extension: TYPE-PHDS: 4.75 inches (121 mm) with no buffers or washers.; TYPE-PHDL: 5.88 inches (149 mm) with no buffers or washers.
- Control Handle: Single trigger, manual operation.
- Overall Dimensions:  
TYPE-PHDS: 11.25 inches x 1.875 inches x 7.47 inches (286 x 48 x 191 mm);  
TYPE-PHDL: 11.57 inches x 1.875 inches x 7.47 inches (294 x 48 x 191 mm).
- Weight: TYPE-PHDS: 6.20 pounds (2.8 kg); TYPE-PHDL: 6.65 pounds (3.02 kg).

ITEM NO.	JARVIS NO.	DESCRIPTION	QTY. REQ.	
214-215	3028 36501	3110009	Release Pin Assembly	1
205-208/211-212	3028 36791	3161561	Firing Block and Dog Assembly	1
	3028 36821	3180003	Container and Tools Package	1

# Power Actuated Stunners (PAS) TYPE-C

# JARVIS

MADE IN USA



## PAS-CS 25S STANDARD BOLT

- Penetrating Shaft Diameter: 0.45 inches (11.4 mm).
- Control Handle: Single trigger, manual operation.
- Bolt Extension:  
TYPE-CS: 4.75 inches (121 mm) with no bumpers;  
TYPE-CL: 5.80 inches (147 mm) with no bumpers.
- Overall Dimensions:  
TYPE-CS: 14.1 inches x 2.25 inches (358 x 57 mm);  
TYPE-CL: 15.09 inches x 2.25 inches (383 x 57 mm).
- Weight:  
TYPE-CS: 6.50 pounds (2.9 kg);  
TYPE-CL: 6.85 pounds (3.1 kg).

## PAS-CL 25S LONG BOLT

ITEM NO.	PRODUCT	JARVIS NO.	EACH
3028 77021	PAS-CS 25S, Standard Bolt .25 Caliber	4144061	CALL FOR PRICING
3028 77181	PAS-CL 25S, Long Bolt .25 Caliber	4144062	CALL FOR PRICING

## PAS-CS and CL

Suggested Cartridges: Caliber .25S

ITEM NO.	DESCRIPTION .25 CALIBER	ROUNDS/PKG	CARTRIDGES	JARVIS NO.	APPLICATIONS
3028 35765	Yellow Cartridge, 2 Grain	1,000	.25S	1076029	 Hogs and Small Cattle
3028 35555	Black Cartridge, 4 Grain	1,000	.25S	1076036	 Hogs, Sows, Boars and Fat Cattle
3028 35845	Black Cartridge HMF, 5 Grain (Lead Free)	1,000	.25S	1076036	 Hogs, Sows, Boars and Fat Cattle



Scan this QR code with your mobile device to watch a video about PAS-TYPE C Stunner Maintenance

## PAS-CSHD 25S SUPER HEAVY-DUTY

ITEM NO.	PRODUCT	JARVIS NO.	EACH
3028 77291	PAS-CSHD 25S, Super Heavy-Duty Bolt .25 Caliber	4144059	CALL FOR PRICING

## PAS-CSHD

Suggested Cartridges: Caliber .25S

ITEM NO.	DESCRIPTION .25 CALIBER	ROUNDS/PKG	CARTRIDGES	JARVIS NO.	APPLICATIONS
3028 77315	Red Cartridge, 6 Grain	1,000	.25R	1176025	 Hogs and Bulls
3028 35555	Black Cartridge, 4 Grain	1,000	.25S	1076036	 Hogs, Sows, Boars and Fat Cattle
3028 35845	Black Cartridge HMF, 5 Grain (Lead Free)	1,000	.25S	1076036	 Hogs, Sows, Boars and Fat Cattle

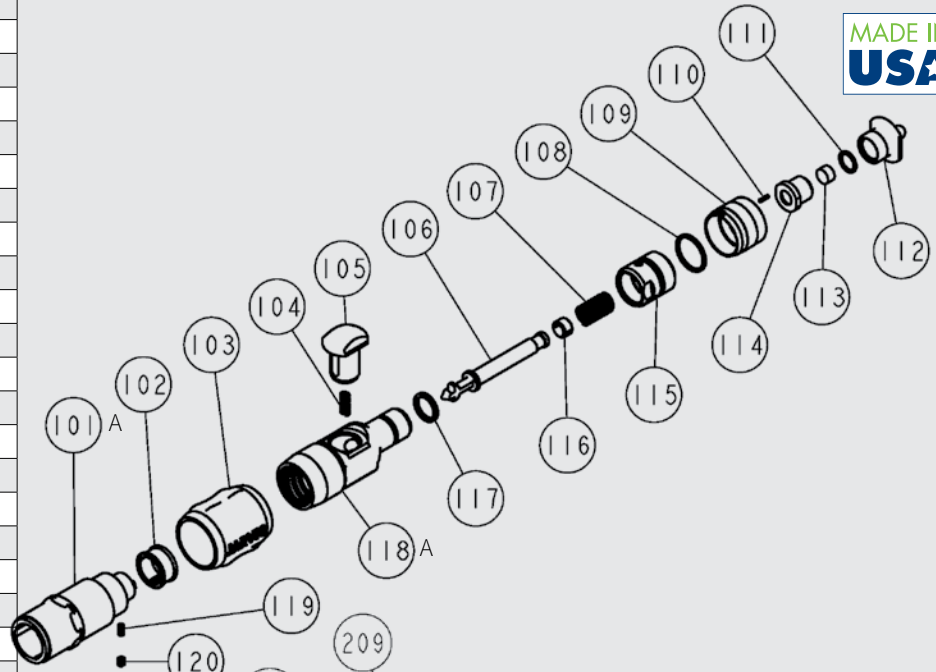
CAUTION: Do not exceed cartridge strength for prescribe usage.



**JARVIS®**

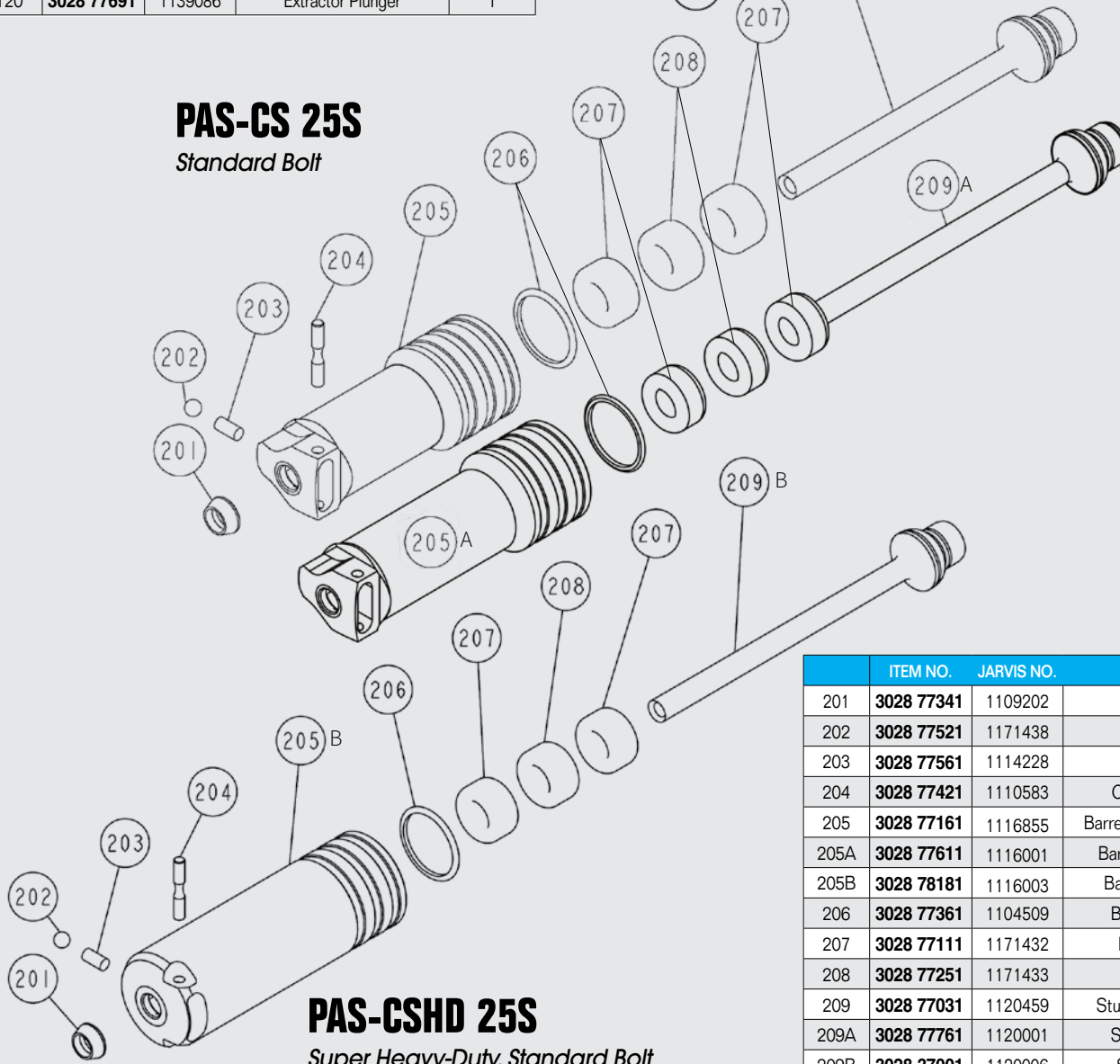
MADE IN USA

ITEM NO.	JARVIS NO.	DESCRIPTION	QTY. REQ.	
101	3028 77071	3116001	Breech Housing	1
101A	3028 37191	3116029	Breech Housing, HD	1
102	3028 77451	1171437	Extractor .25 Caliber	1
103	3028 77321	1102673	Breech Cover	1
104	3028 77571	1114224	Trigger Spring	1
105	3028 77331	1118176	Trigger	1
106	3028 77171	1110637	Firing Pin	1
107	3028 77211	1114225	Firing Pin Spring	1
108	3538 00221	410947	Safety O-Ring	1
109	3028 77371	1171436	Outer Safety Cap	1
110	3028 77891	1110006	Safety Roll Pin	1
111	3538 00211	410924	Pull Lock O-Ring Washer	1
112	3028 77471	1171434	Firing Pin Pull	1
113	3028 77531	1114227	Pull Buffer	1
114	3028 77621	1136408	Pull Bushing	1
115	3028 77351	1171435	Inner Safety Cap	1
116	3028 77551	1136409	Pull Split Bush (pair)	1
117	3538 00201	410918	Small O-Ring	1
118	3028 77101	1116857	Breech Cap	1
118A	3028 36931	1116012	Breech Cap, HD	1
119	3028 78141	1114226	Plunger Spring	1
120	3028 77691	1139086	Extractor Plunger	1



**PAS-CS 25S**  
Standard Bolt

**PAS-CL 25S**  
Long Bolt



ITEM NO.	JARVIS NO.	DESCRIPTION	QTY. REQ.	
201	3028 77341	1109202	Collar	1
202	3028 77521	1171438	Collar Ball	1
203	3028 77561	1114228	Collar Spring	1
204	3028 77421	1110583	Collar Retaining Pin	1
205	3028 77161	1116855	Barrel/Nosepiece Standard	1
205A	3028 77611	1116001	Barrel/Nosepiece Long	1
205B	3028 78181	1116003	Barrel/Nosepiece HD	1
206	3028 77361	1104509	Barrel Lock Washer	1
207	3028 77111	1171432	Black Buffer, Soft	1
208	3028 77251	1171433	Red Buffer, Soft	1
209	3028 77031	1120459	Stunning Rod, Standard	1
209A	3028 77761	1120001	Stunning Rod, Long	1
209B	3028 37001	1120006	Stunning Rod, HD	1

**PAS-CSHD 25S**  
Super Heavy-Duty, Standard Bolt

PRICES ARE SUBJECT TO CHANGE • MINIMUMS MAY APPLY • VISIT OUR WEBSITE FOR CURRENT PRICING.

# Power Actuated Stunners (PAS) TYPE-C

# JARVIS

MADE IN USA

## PAS-CL 25S

LONG BOLT

- Model: PAS Type C.
- Penetrating Shaft Diameter: 0.45 inches (11.4 mm).
- Bolt Extension TYPE-CS: 4.75 inches (121 mm).
- Control Handle: single trigger, manual operation.
- Automatic Bolt Retraction.
- Overall Dimensions TYPE-CS: 15.97 X 2.04 inches (406 x 52 mm).
- Weight: 7.80 pounds (3.5 kg).



ITEM NO.	PRODUCT	JARVIS NO.	EACH
3028 48931	PAS-CL 25S Long Bolt Stunner	4144057	CALL FOR PRICING

## PAS-CL

Suggested Cartridges: Caliber .25

ITEM NO.	DESCRIPTION .25 CALIBER	ROUNDS/PKG	CARTRIDGES	JARVIS PART #	APPLICATIONS
3028 35765	Yellow Cartridge, 2.0 Grain	1,000		1076029	
3028 35785	Yellow Cartridge, 2.0 Grain	50		1176016	
3028 35555	Black Cartridge, 4.0 Grain	1,000		1076021	
3028 35835	Black Cartridge, 4.0 Grain	50		1176022	
3028 35845	Black Cartridge HMF, 4.0 Grain (Lead Free)	1,000		1076036	
3028 35685	Green Cartridge, 4.5 Grain	1,000		1076023	
3028 35715	Green Cartridge, 4.5 Grain	50		1176024	

CAUTION: Do not exceed cartridge strength for prescribe usage.

PRICES ARE SUBJECT TO CHANGE • MINIMUMS MAY APPLY • VISIT OUR WEBSITE FOR CURRENT PRICING.

# SHOP [bunzlpd.com](http://bunzlpd.com) 24/7

Where you can find out what's on sale, find updated product information, reviews and pricing.

Need Help? Chat With Us Online!



STAY CONNECTED WITH US:





# PAS-CL 25S

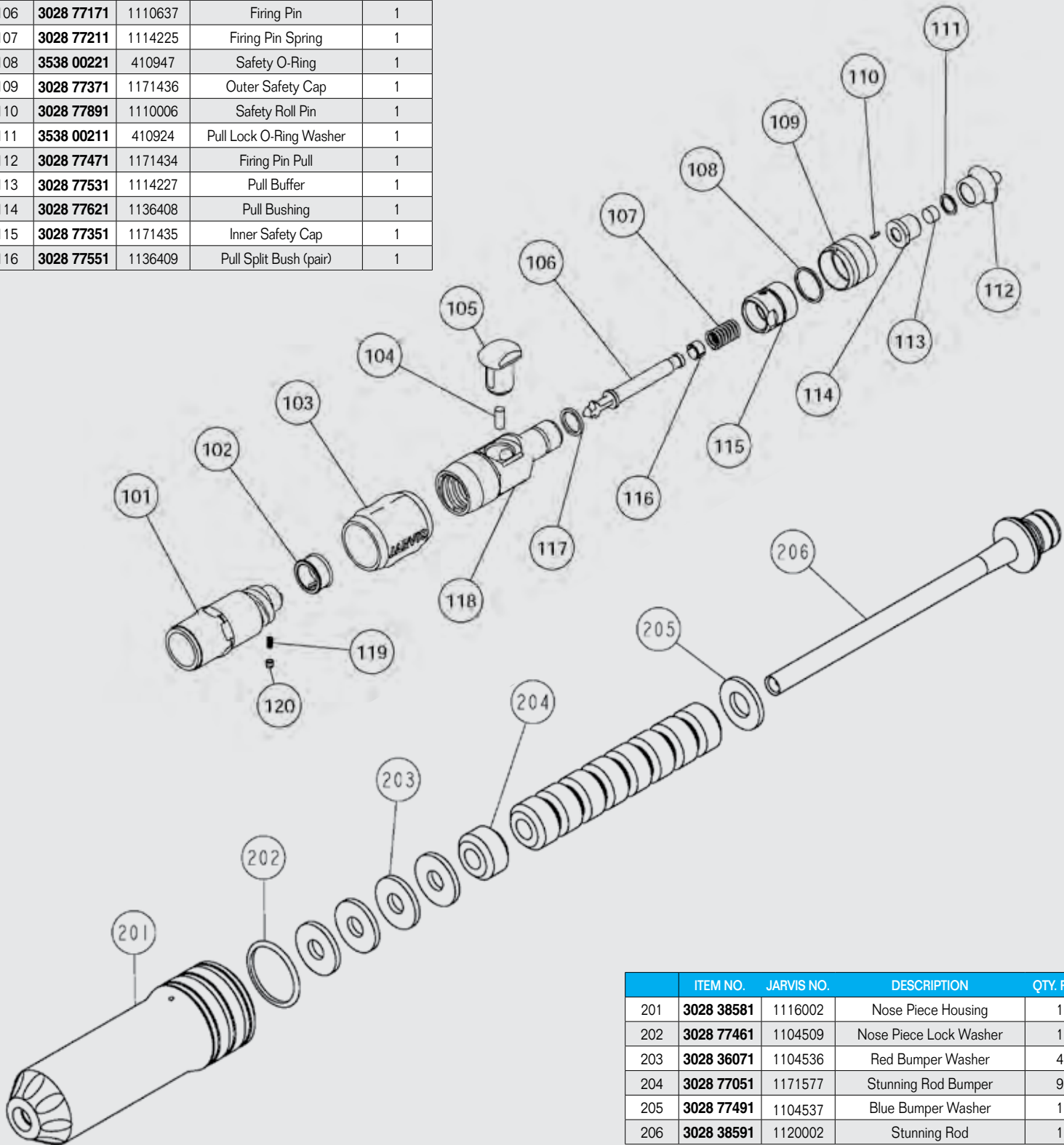
Long Bolt

# JARVIS®

MADE IN USA

	ITEM NO.	JARVIS NO.	DESCRIPTION	QTY. REQ.
101	3028 49421	3116624	Breech Housing	1
102	3028 77451	1171437	Extractor .25 Caliber	1
103	3028 77321	1102673	Breech Cover	1
104	3028 77571	1114224	Trigger Spring	1
105	3028 77331	1118176	Trigger	1
106	3028 77171	1110637	Firing Pin	1
107	3028 77211	1114225	Firing Pin Spring	1
108	3538 00221	410947	Safety O-Ring	1
109	3028 77371	1171436	Outer Safety Cap	1
110	3028 77891	1110006	Safety Roll Pin	1
111	3538 00211	410924	Pull Lock O-Ring Washer	1
112	3028 77471	1171434	Firing Pin Pull	1
113	3028 77531	1114227	Pull Buffer	1
114	3028 77621	1136408	Pull Bushing	1
115	3028 77351	1171435	Inner Safety Cap	1
116	3028 77551	1136409	Pull Split Bush (pair)	1

	ITEM NO.	JARVIS NO.	DESCRIPTION	QTY. REQ.
117	3538 00201	410918	Small O-Ring	1
118	3028 77101	1116857	Breech Cap	1
119	3028 78141	1114226	Plunger Spring	1
120	3028 77691	1139086	Extractor Plunger	1



	ITEM NO.	JARVIS NO.	DESCRIPTION	QTY. REQ.
201	3028 38581	1116002	Nose Piece Housing	1
202	3028 77461	1104509	Nose Piece Lock Washer	1
203	3028 36071	1104536	Red Bumper Washer	4
204	3028 77051	1171577	Stunning Rod Bumper	9
205	3028 77491	1104537	Blue Bumper Washer	1
206	3028 38591	1120002	Stunning Rod	1

JARVIS PAS REPLACEMENT PARTS

PRICES ARE SUBJECT TO CHANGE • MINIMUMS MAY APPLY • VISIT OUR WEBSITE FOR CURRENT PRICING.

# Power Actuated Stunners (PAS) TYPE-C IMPACT FIRE

# JARVIS

MADE IN USA

## PAS-CLH IF 25S

LONG HANDLE, HEAVY-DUTY



## PAS-C IF 25S

HAND HELD, HEAVY-DUTY

ITEM NO.	PRODUCT	JARVIS NO.	EACH
3028 36471	PAS-C IF HD 25S, Handheld, Heavy-Duty . . . . .	4144072 . . . . .	<b>CALL FOR PRICING</b>
3028 36021	PAS-CLH IF HD 25S, Long Handle, Heavy-Duty. . . . .	4144071 . . . . .	

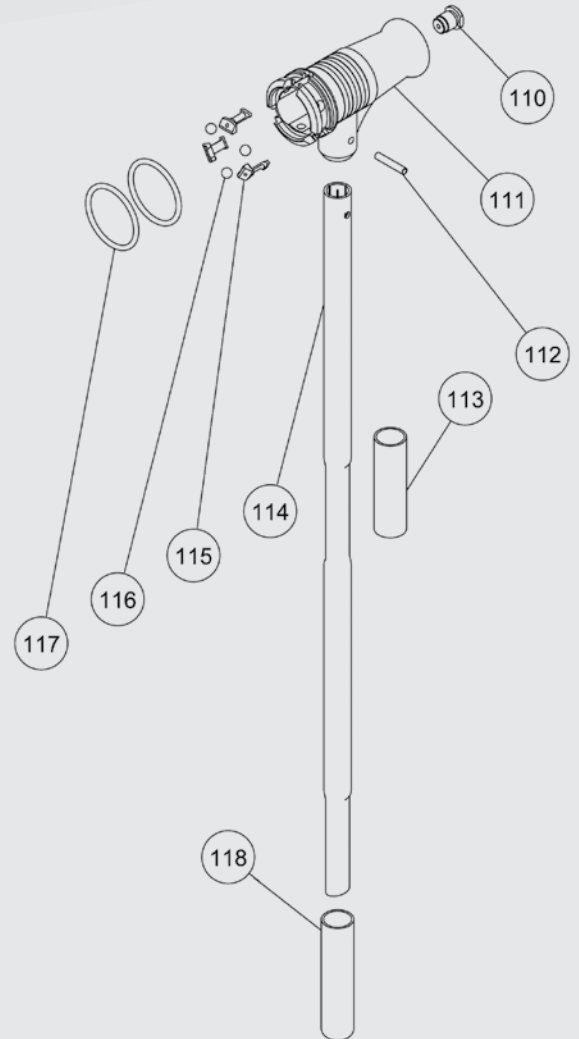
## PAS TYPE C Suggested Cartridges: Caliber .25S

ITEM NO.	DESCRIPTION .25S	ROUNDS/PKG	CARTRIDGES	JARVIS NO.	APPLICATIONS
3028 35555	Black Cartridge, 4 Grain	1,000		1076036	 Hogs, Sows, Boars and Fat Cattle

CAUTION: Do not exceed cartridge strength for prescribe usage.

## Replacement Parts

	ITEM NO.	JARVIS NO.	DESCRIPTION	QTY. REQ.	
	101	3028 78351	1102777	Muzzle	1
	102	3028 78481	1104560	Nosepiece Lock Washer	1
	103	3028 36071	1104536	Red Bumper Washer	3
	104	3028 77051	1171577	Stunner Bumper	8
	105	3028 77491	1104537	Blue Bumper Washer	1
	106	3028 77821	1120535	Stunner Rod	1
	107	3028 37201	1116997	Barrel	1
	108	3028 78821	1171646	Thread Locking Plug	1
	109	3028 37211	1102003	Breech Block	1
	110	3028 36401	1110639	Firing Pin	1
	112	3028 37221	1110004	Roll Pin	1
	113	3028 37231	1109216	Handle Grip	1
	114	3028 37301	1119312	Handle	1
	115	3028 78401	1153022	Stunner Claw	3
	116	3028 78501	1121578	Brass Ball	3
	117	3028 37251	1135868	O-Ring	2
	118	3028 37261	1109215	Handle Grip	1



	ITEM NO.	JARVIS NO.	DESCRIPTION	QTY. REQ.
113-114/118	3028 37271	3119001	Handle Assembly	1
110-112/115-117	3028 55081	3116032	Stunner Cap Assembly (Long Handle)	1
110-111/115-117	3028 37281	3116014	Stunner Cap Assembly (Handheld)	1
107-109	3028 36411	3116026	Barrel/Breech Block Assembly	1

# Stun Tester

- Fast, accurate device for testing Jarvis® stunners PAS Type-C and Type-P.
- Easy to use — intuitive operation.
- Data log for test audits.
- Complies with the most stringent requirements for audit data collection.
- Compatible with Type-C and Type-P power actuated stunners.

# JARVIS

MADE IN USA

Stun Test Data Records					
Date/Time	Stunner #	Serial #	Power Load Code	Operator ID	SPEED
5/4/2016 8:19	16	110016	7	1234	191
5/4/2016 8:24	16	110016	7	1234	179
5/4/2016 8:38	16	110016	9	1234	196
5/4/2016 9:04	17	110017	7	1235	184

Example of an exportable data log for stun test tracking.



Scan this QR code with your mobile device to watch a video about PAS TYPE-P Stun Tester.

ITEM NO.	PRODUCT	JARVIS NO.	EACH
3028 35941	Stun Tester	411600	CALL FOR PRICING

ITEM NO.	PRODUCT	JARVIS NO.	EACH
3028 36541	Stunner Bumper Cushion	1171010	CALL FOR PRICING
3028 37491	Pad Grips (Requires 4)	1161006	CALL FOR PRICING

## Cleaning Tools

Everything you need to help keep your stunner at its optimum performance.

**NOTE: We highly recommend using G96 when cleaning your stunner!**

ITEM NO.	PRODUCT	VENDOR NO.	EACH
3028 36901	A. Hexagon Wrench	8139147	\$5.95
3028 78251	B. Push Rod	8133013	18.95
3028 36261	C. Pick/Pivot Pin	8137019	41.95
3028 77681	D. Undercut Cleaner/Scraper	8137018	127.95
3028 78391	E. Spanner (Wrench)	8130074	39.95
3028 78231	F. 16 mm Cone Wrench	8130076	31.95
3028 78221	G. 14 mm Cone Wrench	8130075	31.95
3028 77751	H. Breech Cleaner	8137017	146.95
3028 36271	I. Manual Extractor/Pry Bar	8132003	36.95
3028 36311	J. Wire Hand Brush	8137020	19.95
3028 36331	K. Roll-Up Tool Pouch	1171638	103.95
3028 36431	L. Steel Cleaning Brush, Small	1171629	18.95
3028 77881	M. Steel Cleaning Brush, Large	1171627	36.95
3028 77831	N. Steel Brush Handle	1119309	42.95
3028 38071	O. Breach Brush	1171012	14.95
3028 38001	P. Cotton Cleaning Brush	1171013	18.95
3028 38011	Q. Brass Brush Handle	1119002	61.95
3028 77861	R. Anti-Seize Thread Grease, 4 oz.	1162047	35.95
E775 00961	S. Gun Oil, Cleaning Solvent, 4 oz.	1054	16.95
3948 0096	T. Gun Oil, Cleaning Solvent, 12 oz.	410990	26.95
3028 44031	U. Sharpening Tool	8104099	113.95



## Cleaning Tool Kit

- Includes 1 each of tools A-K shown.

ITEM NO.	PRODUCT	JARVIS NO.	EACH
3028 36241	Cleaning Tool Kit	3161006	\$624.95

PRICES ARE SUBJECT TO CHANGE • MINIMUMS MAY APPLY • VISIT OUR WEBSITE FOR CURRENT PRICING.

## HPS-1 Non-Penetrating Air-Powered Stunner

*Non-penetrating euthanasia stunner for small livestock and poultry.*

- Practical for use on small pigs, turkeys, rabbits, geese, alligators and fish.
- Can be used with either an easily changeable 12-ounce CO<sub>2</sub> cylinder (providing over 150 shots), portable high-pressure air tank or connected to an air compressor.
- Adjustable impact pressure handles different sizes of animals.
- Single trigger control makes for comfortable handling and operation.
- Light-weight, easy-to-clean and repair.



JARVIS

MADE IN USA

ITEM NO.	PRODUCT	JARVIS NO.	EACH
3028 43171	HPS-1 Stunner.....	4044131.....	<b>CALL FOR PRICING</b>



## USSS-BBS Non-Penetrating Pneumatic Stunner

*Unique design renders the stunned animal insensible to pain without penetrating the skull.*

- Stunning rod has a larger 3-1/4-inch piston.
- The longer housing gives the rod 0.65 inches more free travel before it leaves the head contact.
- The air chamber is 1-1/2 inches longer giving 30% more available air when fired.
  - Valve body is larger and has a larger valve which provides more air flow.
  - One shot humane stunning procedure.
  - Better stunning for improved meat quality.
  - Easy to handle and operate for less operator fatigue and more accurate head contact.
  - Easy to maintain, clean and repair.

JARVIS

MADE IN USA

ITEM NO.	PRODUCT	JARVIS NO.	EACH
3028 53211	USSS-BBS Stunner.....	4044154.....	<b>CALL FOR PRICING</b>

**SHOP bunzlpd.com 24/7**

**Where you can find out what's on sale, find updated product information, reviews and pricing.**

STAY CONNECTED WITH US:



Need Help?  
Chat With Us  
Online!



## USSS-1/2 Penetrating Pneumatic Stunner

*Renders stunned animal insensible to pain.*

- One shot humane stunning procedure. Fires only once — no multiple firing.
- Better stunning for improved meat quality.
- Air operated with no air injection.
- Easy to handle and safe to operate.
- Low recoil or kick back.
- Lightweight tool only weighs 15.5 pounds (7.03 kg).
- Easy to handle, repair and clean.



JARVIS

MADE IN USA

ITEM NO.	PRODUCT	JARVIS NO.	EACH
3028 38021	USSS-1/2 Stunner	4044042	CALL FOR PRICING

## USSS-21 Pneumatic Stunner

- Newly designed, lighter weight oblong shaped stunning rod for easier skull penetration and 15 to 20% faster bolt speed.
- More efficient, uses 25% less air with no performance loss.
- Improved ergonomic handle design for less operator fatigue, and controlling possible injuries.
- Redesigned auxiliary handle that rotates to operator's preference.
- Easy to handle, repair, maintain and clean.
- Two different firing sequences — less chance of activating stunner accidentally.



JARVIS

MADE IN USA

ITEM NO.	PRODUCT	JARVIS NO.	EACH
3028 44681	USSS-21 Stunner	4044132	CALL FOR PRICING

## AST-107 Pneumatic Stunner Tester

*Fast, accurate testing of the USSS-21 Stunner.*

- Data logs accurate USSS-21 testing (firing speed, expected velocity and test pressure).
- Complies with most stringent requirements or audit data collections.
- Detachable nose guide.
- Easy-to-use — intuitive operation.



Detachable nose guide.



Shown with USSS-21 stunner in place.

ITEM NO.	PRODUCT	JARVIS NO.	EACH
3028 44691	AST-107 Stunner Tester	4016015	CALL FOR PRICING

JARVIS

MADE IN USA

## KnockerVest™ with Detachable Groin Protector

Designed for body protection while using stunning equipment.

- 100% aramid ballistic package (type IIIA) backed with 1/2-inch closed-cell foam and inserted in a 1,000 denier Cordura carrier vest which is coated with a urethane film for even more water resistance.
- Water-resistant carrier vest meets the highest standards for soft body armor.
- Back of vest is made of a tough, breathable open nylon mesh that is made to withstand multiple washings.
- All fasteners are quick-release with adjustable straps and plastic buckles to ensure a great fit.
- Outer shell carrier units may be hand or machine washed with mild detergent and air dried.
- Groin protector and cover are both sold separately.

KnockerVest™ is a trademark of JHRG Manufacturing LLC.



Breathable nylon mesh back.



Chest ballistics protection is easily removed to clean vest.



Easily detachable groin ballistics protection.

ITEM NO.	PRODUCT	SIZE/LENGTH	EACH
4009 0102	KnockerVest™	Large/22"	\$549.95
4009 0103	KnockerVest™	X-Large/24"	549.95
4009 0104	Groin Protector Pad w/Black Cover and 3-Snap Attachment		279.95
4009 0010	Replacement Black Cover for Groin Protector		159.95

**NOTE: No claim made or implied the KnockerVest™ can or will protect users from impact by a non-deforming projectile. KnockerVests will not resist pointed tools or knives. Read product specifications carefully before use.**

## Stainless Steel Foot Protectors



- For best protection, the guard should be positioned so that it rests upon the steel toe of shoe or boot.
- Stainless steel shell with aluminum rivets.
- For use on Mens' shoes/boots sizes 6-13.

**NOTE: Sold per pair.**

ITEM NO.	PRODUCT	F.O.B. FACTORY PAIR
5140 2101	A. Foot Protector for Shoes w/Laces	\$49.95
5140 0107	B. Foot Protector for Shoes w/o Laces	53.95



Foot Protector for Shoes WITH laces.



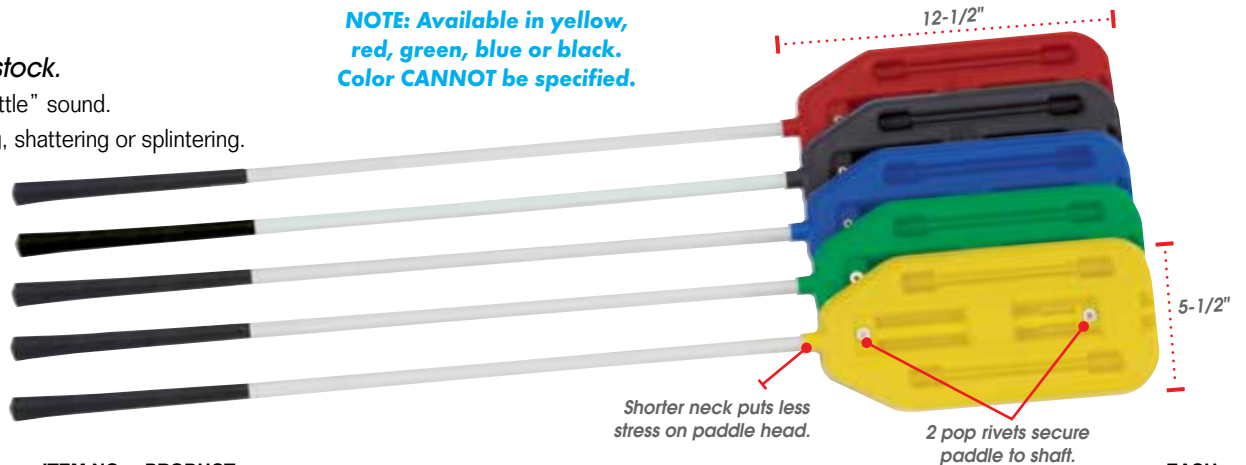
Foot Protector for Shoes WITHOUT laces.

## Rattle Paddles

The humane way to move livestock.

- BBs in paddle create a pervasive "rattle" sound.
- Vinyl tubing encases stick eliminating, shattering or splintering.
- Reinforced paddle head for maximum durability.
- Golf club grip.

**NOTE: Available in yellow, red, green, blue or black. Color CANNOT be specified.**



Replacement copper BBs.

ITEM NO.	PRODUCT	EACH
C933 30431	42" Rattle Paddle	\$14.95
C933 30491	48" Rattle Paddle	15.95
C933 21001	Replacement Paddle Head	5.95
3106 60251	Replacement BB's (Bulk Bottle of 6,000)	21.95

## Yellow DuraProd™ Cattle Prod

The next generation of prod technology.

- New patent pending "circuit isolation technology" reduces feedback shock.
- New handle design with rubber grip, oversized trigger and hand guard. • Sealed motor can't be damaged by dirt or moisture.
- Flexible shaft. • Built-in safety switch. • Nickel plated contacts. • Low amps prevent burning.
- Rechargeable battery and charger also available. • Easy-to-clean.



Flexible shaft can withstand 180° bend.

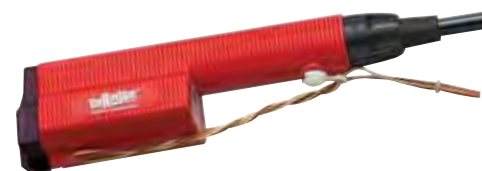


ITEM NO.	PRODUCT	EACH
4173 10321	32" Overall Length, Yellow. . . . .	\$255.25
4173 39501	Rechargeable Battery . . . . .	108.65
4173 00181	Battery Charger and Base. . . . .	78.05

## Red Sabre-Six™ Cattle Prod

Effective on all types of animals — even wet.

- Low amps prevent burning. • Gives more spark and effective power to move stubborn animals.
- Sealed motor can't be damaged by dirt or moisture. • Nickel-plated contacts in shaft.
- Battery operated, uses six C batteries (sold separately). ⚡
- Easy-to-clean.



NOTE: 48-inch prods also available. CALL FOR DETAILS.

ITEM NO.	PRODUCT	EACH
4173 0353	36" Overall Length, Red . . . . .	\$84.35
4173 0306	36" Replacement Shaft . . . . .	27.35

## Green HS200 Cattle Prod

Suitable for use in all conditions - even on wet animals.

- Low amps prevent burning. • Easy-to-clean. • Commercial strength, heavy-duty prod with fiberglass shaft.
- Sealed motor can't be damaged by dirt or moisture.
- High output with low battery drain. • Instant On/Off with no hold-over shock.
- Battery operated, uses six C batteries (not included). ⚡



NOTE: 48-inch prods also available. CALL FOR DETAILS.

ITEM NO.	PRODUCT	EACH
4173 1051	35" Overall Length, Green. . . . .	\$132.85
4173 0306	36" Replacement Shaft . . . . .	27.35

## Rechargeable Battery Pack

To eliminate battery waste choose the optional rechargeable battery pack which fits any HOT-SHOT prod and can be recharged 300-500 times before replacement.

- Optional auto charge and wall outlet adapters for rechargeable battery packs available.



Rechargeable Battery Pack.



Wall Outlet Charging Adapter.

ITEM NO.	PRODUCT	EACH
4173 00171	Wall Outlet Charging Adapter. . . . .	\$22.05
4173 0013	Rechargeable Battery Pack . . . . .	94.95

# Hand-Held Pneumatically Powered Dehider

*The world standard for skinning tools.*

- The #1 skinning tool worldwide for cattle, veal, hogs and sheep.
- Highest possible hide quality — skins perfectly; no cuts, marks, or holes.
- High capacity, high performance tool, designed for long life and low maintenance.
- Extra-thin head with stainless steel center plate for exceptional handling and enduring strength.
- Super efficient motor design.



Scan this QR code with your mobile device to watch the dehider in action on our YouTube channel.



# JARVIS



ITEM NO.	PRODUCT	MOTOR	OPERATING PRESSURES	AIR CONSUMPTION	BLADE SPEED/MIN	OVERALL LENGTH	WEIGHT	EACH
3028 4036	JC IIIA	0.55 hp	45 psi	12 CPM	6,500 - 7,000	13"	2.9 lb	CALL FOR PRICING
3028 9038	JC IIIA	0.55 hp	90 psi	12 CPM	6,500 - 7,000	13"	2.9 lb	CALL FOR PRICING
3028 41801	JC IVA	0.70 hp	45-50 psi	15 CPM	6,500 - 7,000	13"	3.1 lb	CALL FOR PRICING

## 110 mm Dehider Blades

- Compatible with JC-III and JC-IV model dehiders.
- For use on cattle, veal, hogs and sheep.
- Skins perfectly: no cuts, marks or holes.

# JARVIS



ITEM NO.	PRODUCT	OEM#	PAIR
3028 0155	110 mm Dehider Blades	3023011	\$199.95

## Pneumatic Powered Circular Saw

# JARVIS

**CALL 800-456-5624**  
For pricing and details about JARVIS PROCESSING EQUIPMENT



ITEM NO.	PRODUCT	OEM#	EACH
3028 1254	Air Power Circular Saw	4001028 SPC-165	CALL FOR PRICING

## Hand-Held Pneumatic Skinner

# JARVIS

*Jarvis' Handheld Pneumatic Skinner for removing skin and fat from pork, beef, poultry and fish carcasses.*

- Specially designed for fast and efficient removing of trimming strips, rounds, butts, hindquarters and loins from pork carcasses.
- Low cost skinning of boars and sows with uniform, controlled depth removal of skin and fat.
- Also useful for ham trimming and de-fatting, fish skinning, removing chicken breast skin and trimming turkey membranes.
- Provides clean, uniform skin removal without knife cuts or gashes.
- Easy to operate, clean and maintain.
- Adjustable 360° rotating handle for comfortable handling.
- Three cutting depths available: 1/16 inch, 1/8 inch and 3/16 inch.





# Kromer™ “Zero Gravity”™ Balancers

Reduce worker fatigue, safety hazards and tool/air hose damage while allowing for improved accuracy and production volume.

- Kromer balancers are renowned for being the highest quality spring balancers. • Tested for safety (“GS” label) • Steel cable. • Safety chain installed.
- Used for ergonomic placement of production tools – providing ergonomic advantages, functional reliability and safety during operation.
- Once the spring tension is adjusted to the weight of the tool being operated, it may be used at any point along the cable travel without increasing or decreasing forces.
- Quick change cables with superior main spring life.

## Light-Duty Model 7228

- Cable Extension: 4.9 feet (1.6 m)
- Locking safety hanger. • Stepless tension adjustments.
- Locking safety hook. • High-impact housing.
- Drum lock slot. • Safety detent models 3, 4, 5.
- Riveted cold rolled spring.



ITEM NO.	MODEL	LOAD RANGE	SHIPPING WT.	EACH
1968 0015	7228-1	.088-2.65 lb	3 lb	\$152.95
1968 0016	7228-2	2.65-5.73 lb	3 lb	163.95
1968 0017	7228-3	5.73-8.38 lb	3.5 lb	214.95
1968 0018	7228-4	5.38-11-2/5 lb	3.5 lb	240.95
1968 0019	7228-5	11-2/5-14.3 lb	3.5 lb	276.95

## Medium-Duty Model 7230

- Cable Extension: 6.56 feet (2 m).
- Floating rotating suspension.
- Recessed safe adjustments.
- Optional ratchet lock. • High-impact housing.
- Safety drum lock. • Automatic safety detent.
- Riveted cold rolled spring.



ITEM NO.	MODEL	LOAD RANGE	SHIPPING WT.	EACH
1968 0022	7230-1	6.6-11 lb	6.5 lb	\$429.95
1968 0023	7230-2	10-15 lb	7 lb	470.95
1968 0024	7230-3	13.3-22 lb	7 lb	510.95
1968 0025	7230-4	20-30 lb	7.5 lb	601.95
1968 0026	7230-5	28.7-37 lb	8 lb	632.95
1968 0027	7230-6	35.3-46.3 lb	8.5 lb	737.95

**FOUR IMPORTANT STEPS TO DETERMINE WHICH BALANCER IS RIGHT FOR YOU:**

1. Tool weight including accessories.
2. Balancer load range (must match specified range, with best performance in mid to upper load range).
3. Travel (distance tool moves during operation).
4. Overhead space for balancer to hang.



## Heavy-Duty Model 7241

- Cable Extension: 6.56 feet (2 m).
- Floating rotating suspension.
- Recessed safe adjustments.
- Exclusive cable limiter.
- Locking safety hook.
- Safety drum lock.
- Automatic safety detent.
- Containerized cold-rolled spring.
- Easy spring change.



ITEM NO.	MODEL	LOAD RANGE	SHIPPING WT.	EACH
1968 0028	7241-1	.22-44 lb	32.5 lb	
1968 0029	7241-2	.44-66 lb	35 lb	
1968 0030	7241-3	.66-99 lb	37.5 lb	CALL FOR PRICING
1968 0031	7241-4	.99-132 lb	38 lb	CALL FOR PRICING
1968 0032	7241-5	1.32-165 lb	41 lb	CALL FOR PRICING
1968 0033	7241-6	1.65-198 lb	43.5 lb	CALL FOR PRICING
1968 0034	7241-7	1.98-220 lb	44 lb	CALL FOR PRICING

## Heavy-Duty Single Spring Model 7251

- Cable Extension: 9.84 feet (3 m).
- Floating rotating suspension.
- Recessed safe adjustments.
- Exclusive cable limiter.
- Locking safety hook.
- Easy load leveling.
- Safety drum lock.
- Automatic safety detent.
- Containerized cold-rolled spring.
- Easy spring change.



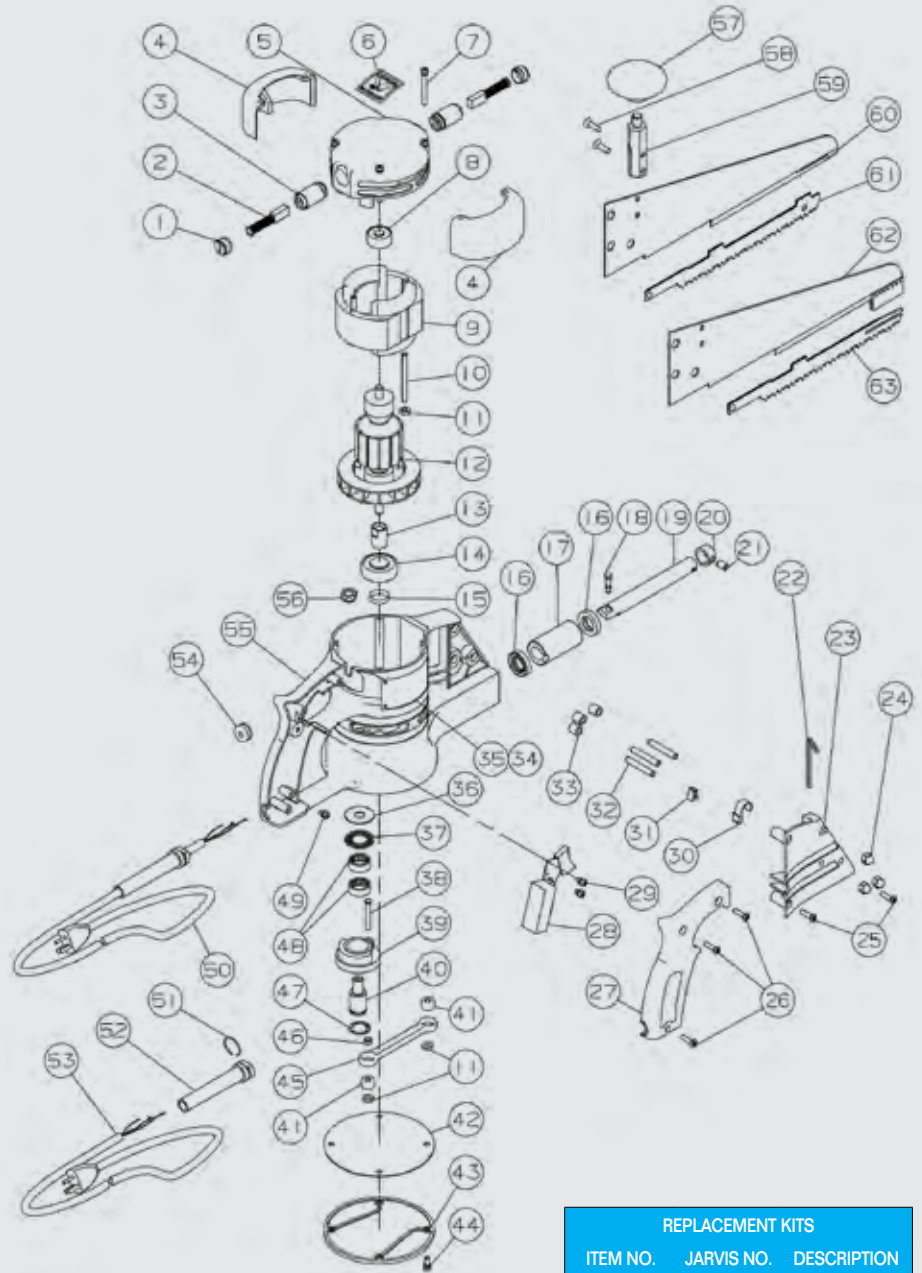
ITEM NO.	MODEL	LOAD RANGE	SHIPPING WT.	EACH
1968 0043	7251-3	77-110 lb	59.5 lb	
1968 0044	7251-4	110-143 lb	62 lb	CALL FOR PRICING
1968 0045	7251-5	145-175 lb	64 lb	CALL FOR PRICING
1968 0046	7251-6	176-198 lb	66 lb	CALL FOR PRICING
1968 0047	7251-7	198-220 lb	70.5 lb	CALL FOR PRICING

	ITEM NO.	JARVIS NO.	DESCRIPTION	REQ. REQ.
1	3028 0025	1063112	Brush Cap	2
2	3028 0024	1063111	Brush and Spring	2
3	3028 0023	1063110	Brush Holder	2
4	3028 0046	1015006	Deflector	2
5	3028 0009	1002191	Top Cap	1
6	3028 7083	1017083	Danger Label	1
7	3028 0039	1055428	Screw, Flat Head	4
8	3028 0043	1021215	Ball Bearing	1
9	3028 0022	1063119	Stator 115 V	1
	3028 3120	1063120	Stator 230 V	1
10	3028 0019	1027040	Stator Stud	2
11	3028 0036	1007164	Lock Nut	4
12	3028 0020	1063117	Armature, 115 V	1
	3028 0021	1063118	Armature, 230 V	1
13	3028 0047	1026072	Pinion Gear, LH Thread	1
14	3028 0063	1021227	Ball Bearing	1
15	3028 0032	1035193	Seal	1
16	3028 0028	1035192	Seal	2
17	3028 0017	1036116	Bushing	1
18	3028 0029	1027041	Drive Stud	1
19	3028 0035	3065010	Push Rod and Stud	1
20	3028 2050	1012050	Clamp Ring	1
21	3028 0061	1055422	Set Screw 1/4"	1
22	3028 0037	8030031	Hex Key	1
23	3028 0010	1002206	Blade Support Cover	1
24	3028 0050	1007162	Cap Nut	6
25	3028 0041	1055439	Screw, Oval Head Phillips	2
26	3028 42421	1054076	Screw, Coated	3
27	3028 1693	1002203	Handle Cover	1
28	3028 0006	1005038	Switch	1
29	3028 34631	1073190	Screw, Round Head	2
30	3028 0096	1012046	"S" Clip	1
31	3028 0097	1012047	"U" Clip (Rubber)	1
32	3028 0049	1027048	Stud	3
33	3028 0048	1036120	Insert Bushing	3
36	3028 0045	1004149	Thrust Bearing Race	1
37	3028 0044	1021218	Needle Thrust Bearing	1
38	3028 0056	1027043	Drive Stud	1
39	3028 0136	3026024	Gear and Stud (Item 38)	1
40	3028 0026	1020133	Gear Shaft, LH Thread	1
41	3028 1737	1021228	Needle Bearing	2
42	3028 0015	1035191	Gasket	1
43	3028 0012	1002193	Bottom Plate	1
44	3028 0038	1055426	Screw, Set of 12	4
45	3028 0016	3028030	Connecting Rod and Bearing	1
46	3028 0033	1029185	Spacer	1
47	3028 3310	1013310	Snap Ring	1
48	3028 0058	1021216	Needle Bearing	2
49	3028 5454	1055454	Screw, Round Head	1
50	3028 0013	3001008	Cord and Plug, 115 V	1
51	3028 0060	1013137	Clamp Ring	1
52	3028 0059	1063125	Strain Relief	1
53	3028 1762	3001011	Cord w/o Strain Relief, 230 V	1
54	3028 3109	1063109	Grommet	1
55	3028 0062	1016199	Housing	1
56	3028 0137	1007166	Gear Stud Nut	1
57	3028 6021	1006021	Knob	1
58	3028 0042	1055429	Screw, Oval Head Phillips	2
59	3028 0030	1027042	Handle Stud	1

## Wellsaw 404 Replacement Parts

We are a full-line stocking distributor of Jarvis® replacement parts and blades for all Jarvis® tools.

# JARVIS®



**CALL 800-456-5624**  
**FOR PRICING AND INFORMATION**

BLADES AND SUPPORTS				
	ITEM NO.	JARVIS NO.	DESCRIPTION	QTY. REQ.
60	3028 8071	1058071	8" Blade Support, End Cut	1
	3028 8070	1058070	16" Blade Support, End Cut	1
61	3028 3122	1023122	8" Blade, End Cutting	1
	3028 31211	1023121	16" Blade, End Cutting	1
62	3028 8075	1058075	8" Blade Support, HD	1
	3028 8074	1058074	16" Blade Support, HD	1
63	3028 3123	1023123	8" Blade, HD	1
	3028 31241	1023123	16" Blade, HD	1
	3028 0179	1023124	Gear Grease, 1 lb Can	1

REPLACEMENT KITS		
ITEM NO.	JARVIS NO.	DESCRIPTION
3028 0064	3063007	Armature, Bearing and Pinion Gear, 115 V
3028 3013	3063013	Armature and Pinion, 115 V
3028 0034	3026023	Gear and Bearing Assembly
3028 6119	3016119	Housing, Seals and Bushing Assembly
3028 11521	3061152	Service Kit (Items 11, 13, 21, 28, 29, 38 and 42)

JARVIS

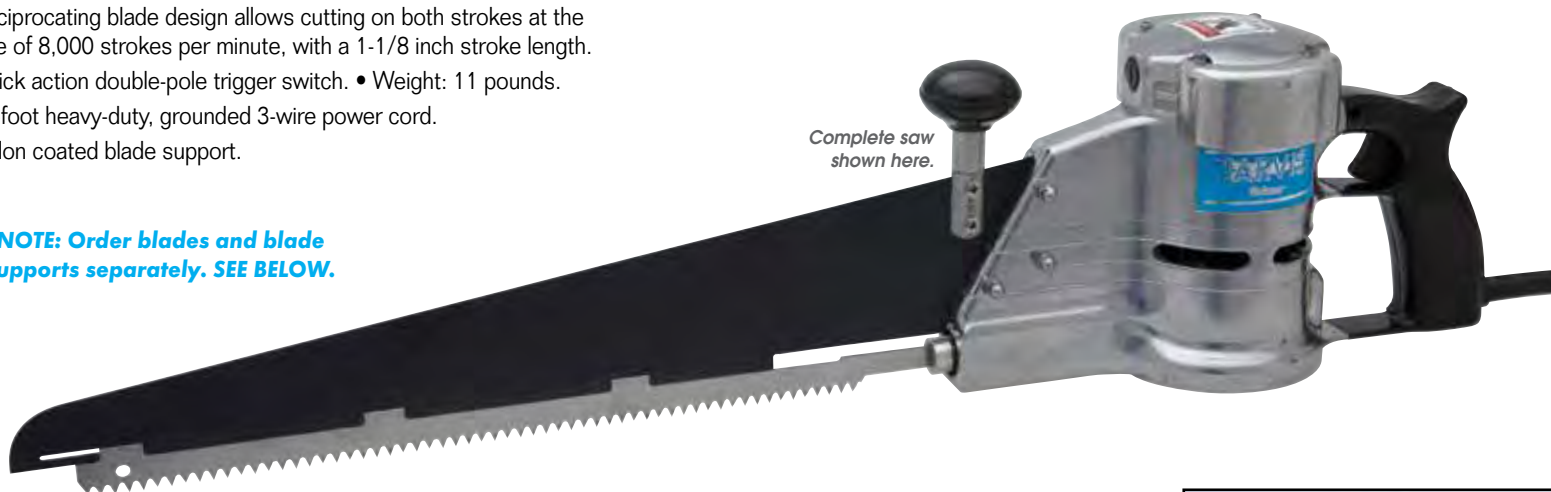
# Wellsaw 404

8,000 strokes per minute, 1 hp.

- Heavy-duty 1 hp motor 115 V AC single phase.
- Reciprocating blade design allows cutting on both strokes at the rate of 8,000 strokes per minute, with a 1-1/8 inch stroke length.
- Quick action double-pole trigger switch. • Weight: 11 pounds.
- 10-foot heavy-duty, grounded 3-wire power cord.
- Teflon coated blade support.

**NOTE: Order blades and blade supports separately. SEE BELOW.**

Complete saw shown here.



**PURCHASE THE WELLSAW 404 SERVICE KIT (SHOWN BELOW) AT THE SAME TIME AS THE WELLSAW AND SAVE! □**

## Wellsaw 404 Meat Saw Motor Drive

ITEM NO.	PRODUCT	EACH
3028 6127	Wellsaw 404 Motor Drive — Assembly Only . . . . .	<b>\$675.00</b>



## Wellsaw 404 Blades and Supports

### Blades — 404

ITEM NO.	PRODUCT	EACH
3028 3122	8" Blade . . . . .	<b>\$27.95</b>
3028 31211	16" Blade . . . . .	<b>46.95</b>
3028 3123	8" Heavy-Duty Blade . . . . .	<b>29.95</b>
3028 31241	16" Heavy-Duty Blade . . . . .	<b>47.95</b>



### Supports — 404

ITEM NO.	PRODUCT	EACH
3028 8071	8" Blade Support . . . . .	<b>\$67.95</b>
3028 8070	16" Blade Support . . . . .	<b>99.95</b>
3028 8075	8" Heavy-Duty Blade Support . . . . .	<b>105.95</b>
3028 8074	16" Heavy-Duty Blade Support . . . . .	<b>135.95</b>



## Wellsaw 404 Service Kit

- We recommend a service kit be ordered with every Wellsaw 404 and SAVE!
- Contains these recommended spare parts to service saw: switch, screw, stud, hex key, grease, pinion gear and bottom plate gasket.

Regularly \$96.95, **ONLY \$86.95** when purchased with a 404 Wellsaw.  
**YOU SAVE \$10!**

ITEM NO.	PRODUCT	PURCHASED SEPARATELY	PURCHASED WITH WELLSAW
3028 11521	Wellsaw 404 Service Kit . . . . .	<b>\$96.95</b>	<b>\$86.95</b>

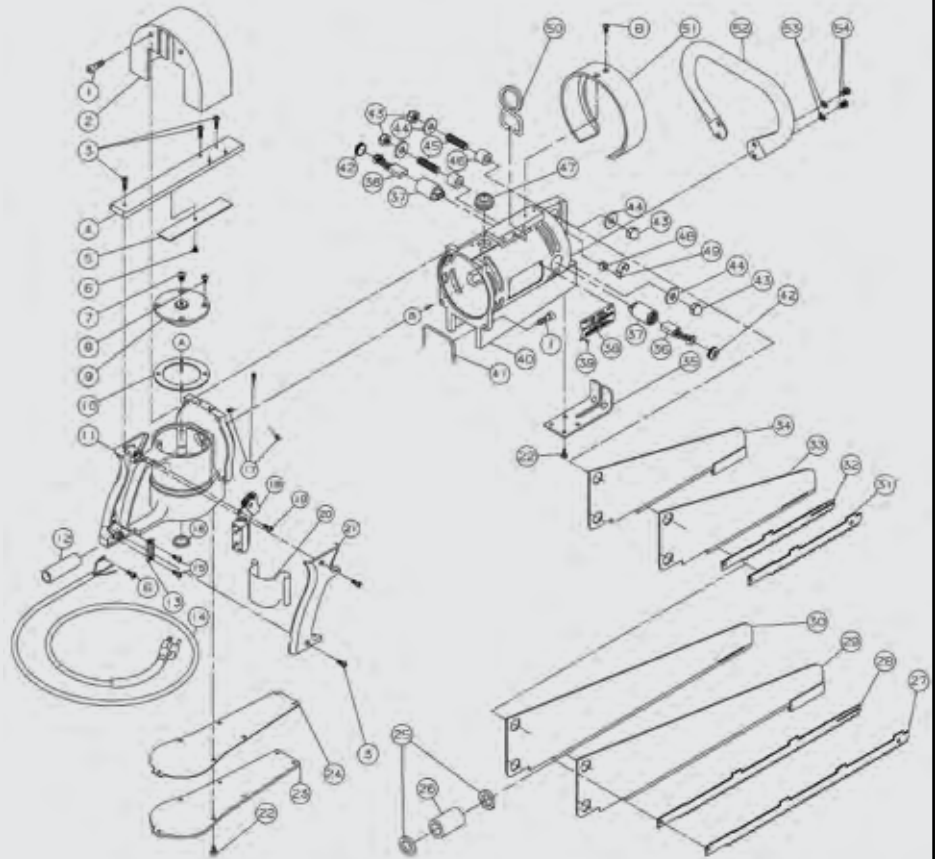


**DID YOU KNOW WE OFFER REPAIR SERVICE FOR WELLSAWS? Call for details.**

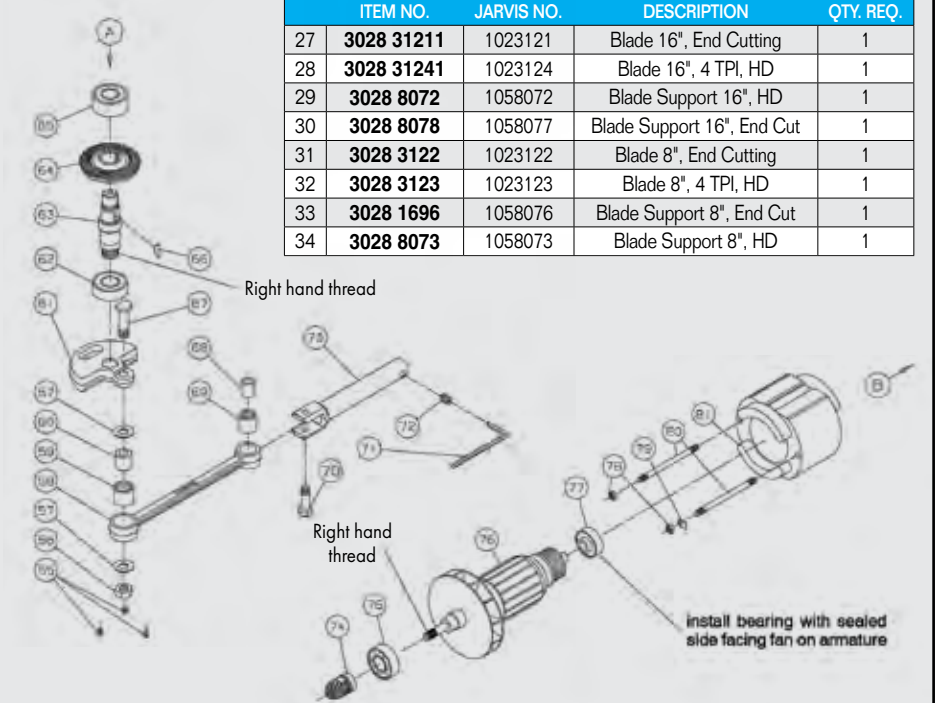
PRICES ARE SUBJECT TO CHANGE • MINIMUMS MAY APPLY • VISIT OUR WEBSITE FOR CURRENT PRICING.

# Wellsaw 444 Replacement Parts **JARVIS®**

ITEM NO.	JARVIS NO.	DESCRIPTION	QTY. REQ.
1	3028 5948	1055948 Socket Head Cap Screw	4
2	3028 4095	1024095 Guard Exhaust	1
3	3028 0041	1055439 Oval Head Screw	7
4	3028 0066	1061188 Tie Bar	1
5	3028 0067	1002198 Cover Plate	1
6	3028 5454	1055454 Round Head Screw	2
	3028 0040	1055438 Set of 12 Screws	
7	3028 0068	1055434 Button Head Screw	1
8	3028 0069	1055431 Oval Head Screw	6
9	3028 2194	1002194 Bearing Cap	1
10	3028 0071	1035198 Gasket	1
11	3028 0074	1016200 Gear Housing	1
12	3028 0075	1063121 Strain Relief	1
13	3028 0076	1012048 Clamp Bar	1
14	3028 0079	1001028 Power Cord Set 115 V	1
	3028 0080	1001029 Power Cord Set 230 V	1
15	3028 0078	1055430 Fillister Head Screw	2
16	3028 0077	11035194 Seal	1
17	3028 0072	1055436 Set Screw	3
18	3028 0006	1005038 Switch	1
19	3028 34631	1073190 Round Head Screw	2
20	3028 0084	1063124 Insulator	1
21	3028 0083	1002195 Handle Cover	1
22	3028 5452	1055452 Flat Head Screw	11
	3028 0038	1055426 Set of 12 Screws	
23	3028 2196	1002196 Bottom Plate	1
24	3028 0082	1035196 Bottom Plate Gasket	1
25	3028 0115	21035195 Seal	2
26	3028 0116	1036118 Bushing	1
35	3028 0095	1024060 Blade Guard	1
36	3028 0089	3063009 Brush and Spring Assembly	2
37	3028 0088	1063122 Brush Holder	2
40	3028 0087	1016201 Motor Housing and Label	1
41	3028 0086	1035203 Gasket	1
42	3028 0090	1002199 Brush Cap	2
43	3028 0091	1007163 Cap Nut	4
44	3028 0092	1004150 Flat Washer	4
45	3028 0093	1027046 Stud	2
46	3028 0094	1036119 Bushing Insert	2
47	3028 0001	1063123 Grommet	1
48	3028 0097	1012047 "U" Clip	1
49	3028 0096	1012046 "S" Clip	1
50	3028 0098	1001027 Hanging Ring	1
51	3028 0101	1002197 Shroud/Cover	1
52	3028 0099	1019079 Handle (Includes items 53 and 54)	1
53	3028 0100	1004049 Lock Washer	4
54	3028 5069	1055069 Button Head Screw	4
55	3028 0112	1055100 Set Screw	3
56	3028 0111	1007165 Lock Nut	1
57	3028 0107	1004127 Thrust Bearing Race	2
58	3028 0110	1028059 Connecting Rod	1
59	3028 0109	1021221 Needle Bearing	1
60	3028 0108	1021223 Inner Race	1
61	3028 0106	1061189 Crank Arm/Counter Weight	1
62	3028 0105	1021230 Ball Bearing	1
63	3028 0104	1020130 Drive Shaft	1
64	3028 0103	1026070 Spiral Bevel Gear	1
65	3028 0102	1021210 Ball Bearing	1
66	3028 0753	1030100 Woodruff Key	1
67	3028 0120	1027044 Drive Stud	1
68	3028 0118	1021222 Inner Race	1
69	3028 0119	1021220 Needle Bearing	1
70	3028 0113	1027045 Rod Stud	1
71	3028 3132	8030032 Hex Wrench	1
72	3028 0114	1055423 Set Screw	1
73	3028 0117	1065026 Push Rod	1
74	3028 0122	1026071 Spiral Bevel Pinion Gear	1
75	3028 1211	1021211 Ball Bearing	1
76	3028 0055	1063113 Armature, 115 V	1
	3028 0124	1063114 Armature, 230 V	1
77	3028 0128	1021209 Ball Bearing	1
78	3028 0036	1007164 Lock Nut	2
79	3028 0125	1012049 Clamp	1
80	3028 0129	1027047 Stator Stud	2
81	3028 0126	1063115 Stator, 115 V	1
	3028 0127	1063116 Stator, 230 V	1



BLADES AND SUPPORTS			
ITEM NO.	JARVIS NO.	DESCRIPTION	QTY. REQ.
27	3028 31211	1023121 Blade 16", End Cutting	1
28	3028 31241	1023124 Blade 16", 4 TPI, HD	1
29	3028 8072	1058072 Blade Support 16", HD	1
30	3028 8078	1058077 Blade Support 16", End Cut	1
31	3028 3122	1023122 Blade 8", End Cutting	1
32	3028 3123	1023123 Blade 8", 4 TPI, HD	1
33	3028 1696	1058076 Blade Support 8", End Cut	1
34	3028 8073	1058073 Blade Support 8", HD	1



REPLACEMENT KITS		
ITEM NO.	JARVIS NO.	DESCRIPTION
3028 0130	3016120	Gear Housing and Seal Assembly
3028 6121	3016121	Motor Housing and Seal Assembly
3028 0132	3061069	Drive Shaft Assembly
3028 1705	3061070	Crank Arm Assembly
3028 0133	3028031	Connecting Rod and Bearing
3028 0134	3063005	Armature and Brg Assembly, 115 V
3028 0179	1062003	Gear Grease, 1 lb
3028 7083	1017083	Danger Label

**CALL**  
**800-456-5624**  
**FOR PRICING AND**  
**INFORMATION**

## Wellsaw 444

6,300 strokes per minute, 2 hp.

- Heavy-duty 2 hp motor 115 V AC single phase.
- Reciprocating blade design allows cutting on both strokes at the rate of 6,300 strokes per minute, with a 1-1/2 inch stroke length.
- Adjustable ring for overhead counter balance attachment.
- Quick action double-pole trigger switch. • Teflon coated blade support.
- 10-foot heavy-duty, grounded 3-wire power cord. • Weight: 26 pounds.

## Wellsaw 444 Meat Saw

ITEM NO.	PRODUCT	EACH
3028 5252	16" Wellsaw 444 — Complete Unit . . . . .	<b>\$2,099.95</b>

Includes 16" heavy-duty blade and support.



**DID YOU KNOW WE OFFER REPAIR SERVICE FOR WELLSAWS?**  
Call for details.

## Replacement Blades and Supports for Wellsaw 444

### Blades

ITEM NO.	PRODUCT	EACH
3028 3123	8" Heavy-Duty Blade . . . . .	<b>\$29.95</b>
3028 31241	16" Heavy-Duty Blade . . . . .	<b>47.95</b>

### Supports

ITEM NO.	PRODUCT	EACH
3028 8073	8" Blade Support . . . . .	<b>\$104.95</b>
3028 8072	16" Blade Support . . . . .	<b>134.95</b>



## Replacement Blade and Support for Wellsaw 400

ITEM NO.	PRODUCT	EACH
3028 0005	16" Blade Support . . . . .	<b>\$99.95</b>
3028 0007	16" Blade 8 TPI (NOT for Food Product) . . . . .	<b>54.95</b>

ITEM NO.	PRODUCT	EACH
3028 31211	16" Blade . . . . .	<b>\$46.95</b>

► PAGE 429

USE WITH  
**KROMER™  
BALANCER**  
ITEM NO. 1968 0025



*We are a full-line stocking distributor for Jarvis® replacement parts and blades for all Jarvis® tools.*

PRICES ARE SUBJECT TO CHANGE • MINIMUMS MAY APPLY • VISIT OUR WEBSITE FOR CURRENT PRICING.

# SER-04 Reciprocating Breaking Saws

The latest in breaking saw technology. Electrically powered reciprocating saw for production breaking and general purpose use.

# JARVIS

**NOTE: Order blades and blade supports separately. SEE BELOW.**



Complete saw shown here.

- Light-weight — 19 pounds for ultimate flexibility.
- This electric saw is suitable for use on beef, hogs, sheep and veal.
- 1.9 hp motor. • Blade Speed: 4,100 strokes per minute.
- Overall Length: 20-1/2 inches • Weight: 19 pounds • Blade Length: 8 inches or 10 inches.
- Meets national and international requirements for hygiene and safety. • 1 phase, 50/60 Hz.
- Common applications include cutting forequarters, shank bones, primal cuts, aitch bones, brisket opening and splitting.
- Double insulated. • Smoother more comfortable operation. • Ultra low vibration. • TEFC motor.

ITEM NO.	PRODUCT
3028 11371	115 V/13 A, Assembly Only
3028 15651	230 V/6.5 A, Assembly Only

**CALL 800-456-5624 FOR PRICING AND INFORMATION**

## Blades and Supports for SER-04

### End Cutting

ITEM NO.	PRODUCT	EACH
3028 15701	200 mm Blade and Support	\$222.00
3028 15711	200 mm Blade	126.95
3028 15721	200 mm Support	183.00
3028 15751	300 mm Blade and Support	246.00
3028 15771	300 mm Blade	125.00
3028 15791	300 mm Support	186.00
3028 15821	400 mm Blade and Support	251.00
3028 15831	400 mm Blade	126.00
3028 16101	400 mm Support	152.00



### Heavy Cutting

ITEM NO.	PRODUCT	EACH
3028 16911	200 mm Blade and Support	\$281.00
3028 17031	200 mm Blade	95.00
3028 17041	200 mm Support	202.00
3028 17061	300 mm Blade and Support	251.00
3028 17281	300 mm Blade	129.00
3028 17311	300 mm Support	200.00
3028 17471	400 mm Blade and Support	251.00
3028 17481	400 mm Blade	133.00
3028 17511	400 mm Support	149.00

▶ **PAGE 429**

**USE WITH KROMER™ BALANCER**

**ITEM NO. 1968 0024**



**WHEN YOU ARE READY TO UPGRADE TO JARVIS® JUST GIVE US A CALL. WE ACCEPT COMPETITORS' EQUIPMENT ON TRADE TOWARDS ANY NEW JARVIS® EQUIPMENT FOR YOUR PLANT.**

**CALL 800-456-5624 FOR DETAILS**

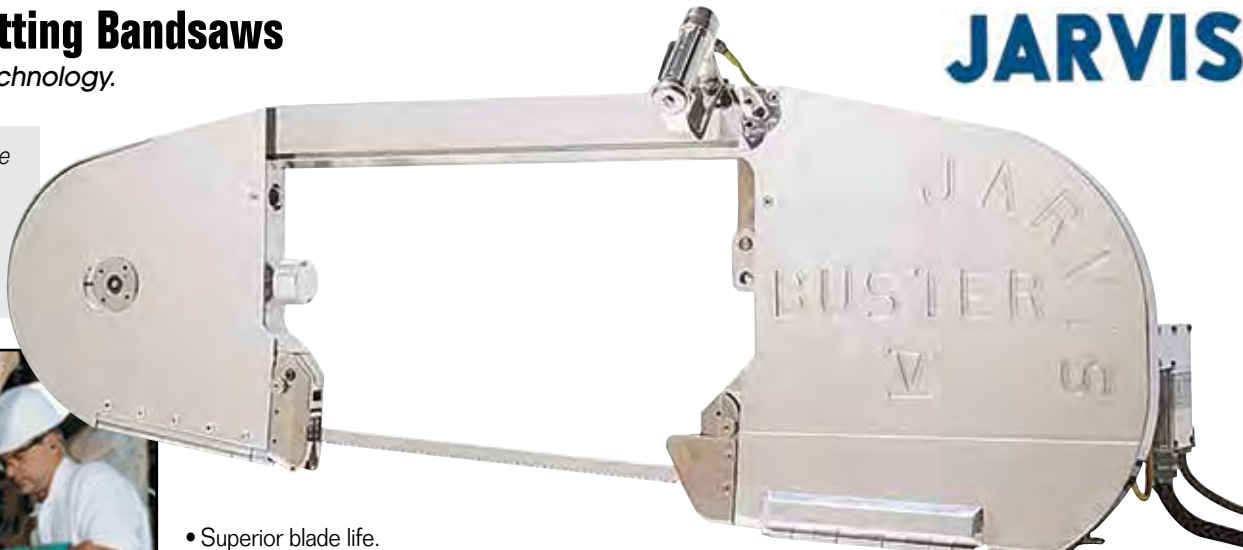
# Buster Carcass Splitting Bandsaws

The world leader in splitting technology.

# JARVIS



Scan this QR code with your mobile device to see a Buster Bandsaw product video.



- Superior blade life.
- Electrically powered bandsaws for splitting cattle, bulls, oxen and pork.
- The largest Jarvis splitting saw; suited for the largest carcasses.
- Best possible hygiene — spoked wheels, flat surfaced housings and completely opening doors — for fast, easy and complete cleaning.
- The drive system is oil bath lubricated for sustained trouble-free operation.
- Ultra-thin rail for unobstructed vision and dual rear handles for comfort.
- Anti-tie down controls and totally enclosed electric motor for operator safety.
- Meets national and international requirements for hygiene and safety.

**JARVIS SERVICE TECHNICIANS ARE AVAILABLE TO PROVIDE FREE CUSTOMER SERVICE, INCLUDING EQUIPMENT INSTALLATION, SERVICE CALLS AND EMPLOYEE TRAINING.**

**Call 800-456-5624 for details.**

## BUSTER COMPARISON CHART

*Which Buster is right for you?*

ITEM NO.	DESCRIPTION	HP	CAPACITY PER HOUR	DISTANCE BETWEEN GUIDES	OVERALL LENGTH	DRIVE WHEEL SPEED (RPM)	WEIGHT
3028 1586	Buster IV Carcass Splitter	3.3	180 Head	17-3/4"	54"	620	190 lb
3028 1589	Buster V Carcass Splitter	3.3	180 Head	19-3/4"	57"	530	196 lb
3028 6060	Buster V Beef Loin Drop	3.3	900 Loins (450 Head)	22-3/4"	59"	530	187 lb
3028 6107	Buster VI Pork Carcass Splitter	3.0	200 Sow/400 Hogs	17-1/10"	51"	657	138 lb
3028 6147	Buster VI-ST Carcass Splitter Stretch	3.0	200 Sow/400 Hogs	23-1/10"	57-1/5"	657	140 lb
3028 6196	Buster IX Carcass Splitter	3.3	180 Head	19-3/4"	57"	530	218 lb
3028 6274	Buster X Carcass Splitter	3.3	450 Head	19-3/5"	57"	657	162 lb

## Replacement Blades for Buster Bandsaw

Blade for the following saw:

ITEM NO.	PRODUCT	BLADE LENGTH	STANDARD BLADE	CUT TOOTH BLADE	JET BLADE
3028 1586	Buster IV Carcass Splitter	119"	3028 0157	3028 3622	3028 3619
3028 1589	Buster V Carcass Splitter	127"	3028 0281	3028 3338	3028 3620
3028 6060	Buster V Beef Loin Drop	133"	3028 0533	N/A	N/A
3028 6107	Buster VI Pork Carcass Splitter	112"	3028 0156	N/A	N/A
3028 6147	Buster VI-ST Carcass Splitter Stretch	123-7/10"	3028 2595	N/A	N/A
3028 6196	Buster IX Carcass Splitter	127"	3028 0281	3028 3338	3028 3620
3028 6274	Buster X Carcass Splitter	112"	3028 0156	N/A	3028 36181

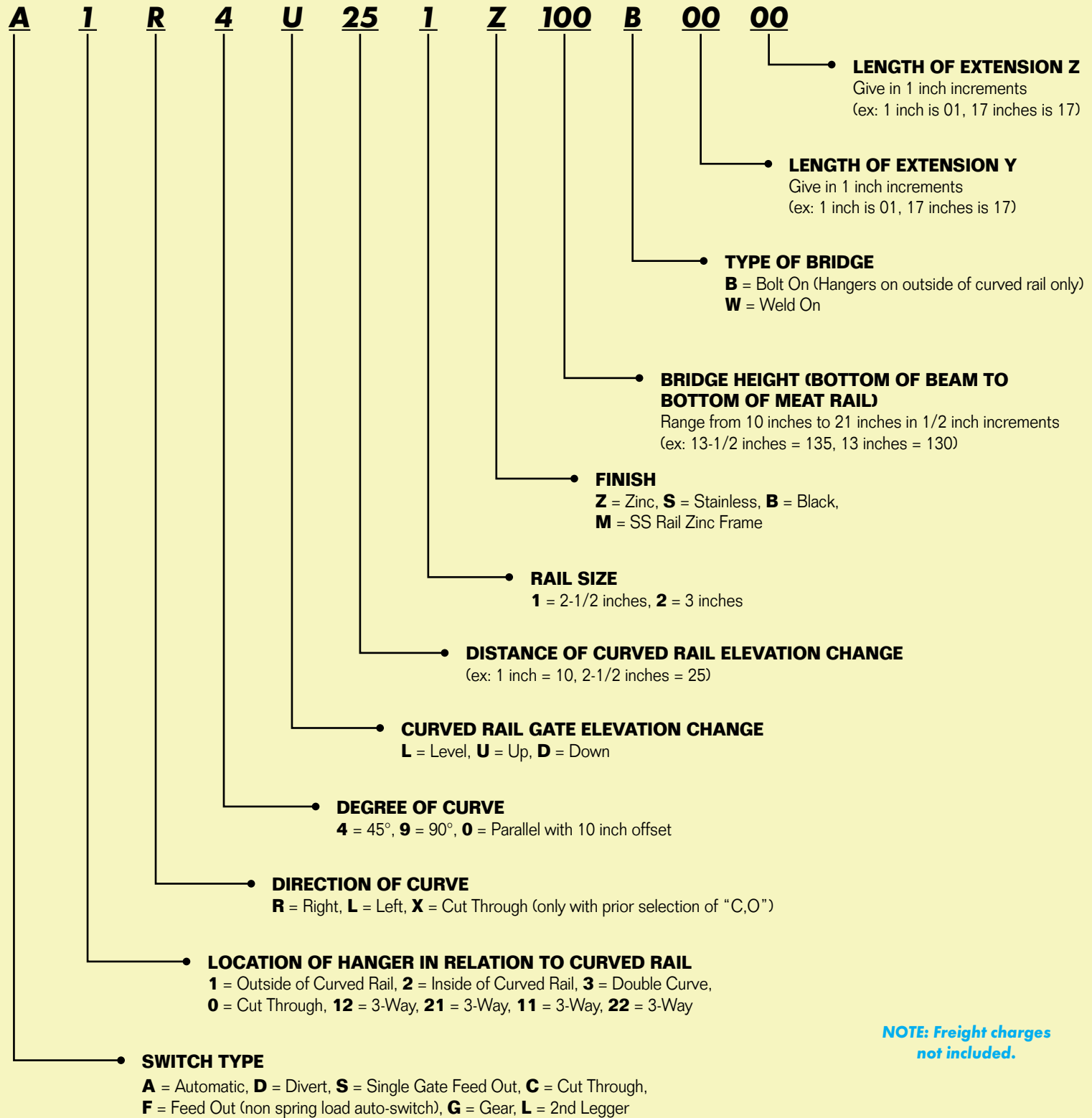
## Recommended Balancers for Buster Bandsaw

▶ SEE PAGE 429

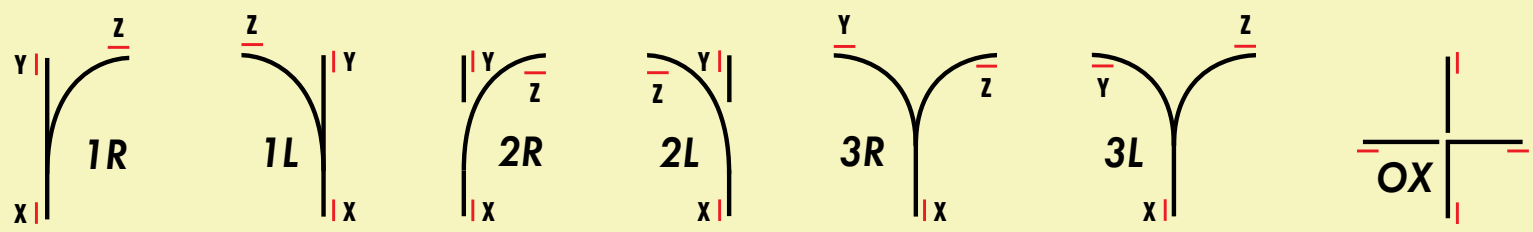
ITEM NO.	PRODUCT	RECOMMENDED BALANCER
3028 1586	Buster IV Carcass Splitter	1968 0033
3028 1589	Buster V Carcass Splitter	1968 0033
3028 6060	Buster V Beef Loin Drop	1968 0033
3028 6107	Buster VI Pork Carcass Splitter	1968 0032
3028 6147	Buster VI-ST Carcass Splitter Stretch	1968 0032
3028 6196	Buster IX Carcass Splitter	1968 0034
3028 6274	Buster X Carcass Splitter	1968 0032

**We are a full-line stocking distributor for Jarvis® replacement parts and blades for all Jarvis® tools.**

# IDFI SWITCH ORDERING IDENTIFICATION GUIDE



**NOTE: Freight charges not included.**



PRICES ARE SUBJECT TO CHANGE • MINIMUMS MAY APPLY • VISIT OUR WEBSITE FOR CURRENT PRICING.





SPECIAL ORDER ITEM

RAIL SWITCHES

## Hercules™ Rail Switches

### Automatic Switches: 2,000/3,000 pound rating\*

- Replacement Pin, Bushing and Shoulder Nut.
  - No more attempting to repair broken or bent bolts to correct angle.
  - Replacement Pin design assures proper angle and position every time.
  - Bushing and nut set spacing eliminates over tightening bolt issues.
  - Pin replacement, easy as replacing a bolt.
  - Pin and Bushing combination increases strength.
- Switching mechanism has fewer parts than the competition.
- Switching uses easier up and down motion to change gates — eliminates side-to-side motion to change gates.
- Heavy guards protect linkages against trolley damage.
- Stainless steel turnbuckle design on adjusting arm.



### Gear Switches: 2,000/3,000 pound rating\*

- Offers lower gate travel path height reducing chain interference issues (patent pending design).
- Heavy-duty trolley stop (patent pending design).
- Heavier gear design.



**NOTE: All switches are patent-pending designs.**

\* Automatic and Gear Switches carry a 2,000 pound rating when hung with hangers. Rating can increase to 3,000 pounds when welded off to a beam.

### Divert Switches: 4,000 pound rating (Air or Hydraulic Options)

- Stronger one piece Cylinder Mounting Arm Bracket.
- New cleaner spring location.
- Stainless steel cylinders air or hydraulic.
- Gate design improves weight transfer throughout the entire switch.

#### Rails:

- Rails are water jet cut using T1 steel which increases strength and improves wear resistance.
- Water jet cutting allows an increase in the amount of material under the gate pocket as well as accurate duplication of parts.
- HERCULES™ = 1-3/4 inches – Industry Standard = 1-1/4 inches.
- Heavier Gates – increased gate dimension due to cutting the parts out of plate steel instead of using standard 2-1/2" meat rail.
- HERCULES™ Gate 1-1/2 inches. • Industry Standard Gate 1-1/4 inches.

#### Bridge/Uprights:

- 1 inch x 2-1/2 inch upright dimension.
- Uprights clock into rail for accurate line up and stronger welds — allowing weld on both sides of rail. The industry standard design uses a face weld on one side only.
- Bolt on bridge design matches up for true placement.
  - Wider bolt pattern increases strength.
  - Lower flange design places bolts below beam.
  - Flange design gives clean welding surface.

#### Parts:

- Parts repeatability achieved by water jet cutting, laser cutting and CNC machining.
- Easy-to-follow parts sheets only require basic switch information to order correct replacement parts.
- Off the shelf parts interchangeability means faster turn around and less down time.
- Precision parts require less time to change out parts and complete repairs done to units hanging in place.
- HERCULES™ Switches are made one design per style only, minimizing confusion and ordering errors.

#### Quoting and Ordering:

- Switch part number explanation sheet gives step-by-step guidelines to get all the necessary information when ordering switches.
- Ordering Identification Guide provides pictures to better identify switch style, type and dimensions.

#### Whole Units:

- Faster delivery times.
- HERCULES™ Switches are made to industry standard dimensions allowing use of existing hangers when replacing competitors switches.

### FOR INFORMATION ON RAILS AND SWITCHES

Chuck Bildstein: [charles.bildstein@bunzlusa.com](mailto:charles.bildstein@bunzlusa.com) or call 319-573-6121.

Ryan Malone: [ryan.malone@bunzlusa.com](mailto:ryan.malone@bunzlusa.com) or call 816-820-7768.

**SIGN UP FOR OUR eDEALS**  Exclusive offers not found anywhere else!

eDEAL SIGN-UP FORM AVAILABLE ON OUR WEBSITE.

**NEED ASSISTANCE?**

Our experienced customer service representatives are available to answer your questions, find the products you are looking for, check product availability and take your order.

**800-456-5624**

[WWW.BUNZLPD.COM](http://WWW.BUNZLPD.COM)



PRICES ARE SUBJECT TO CHANGE • MINIMUMS MAY APPLY • VISIT OUR WEBSITE FOR CURRENT PRICING.

## VGK Oil-Free Rail Systems

*The first and only oil-free trolley on the market.*

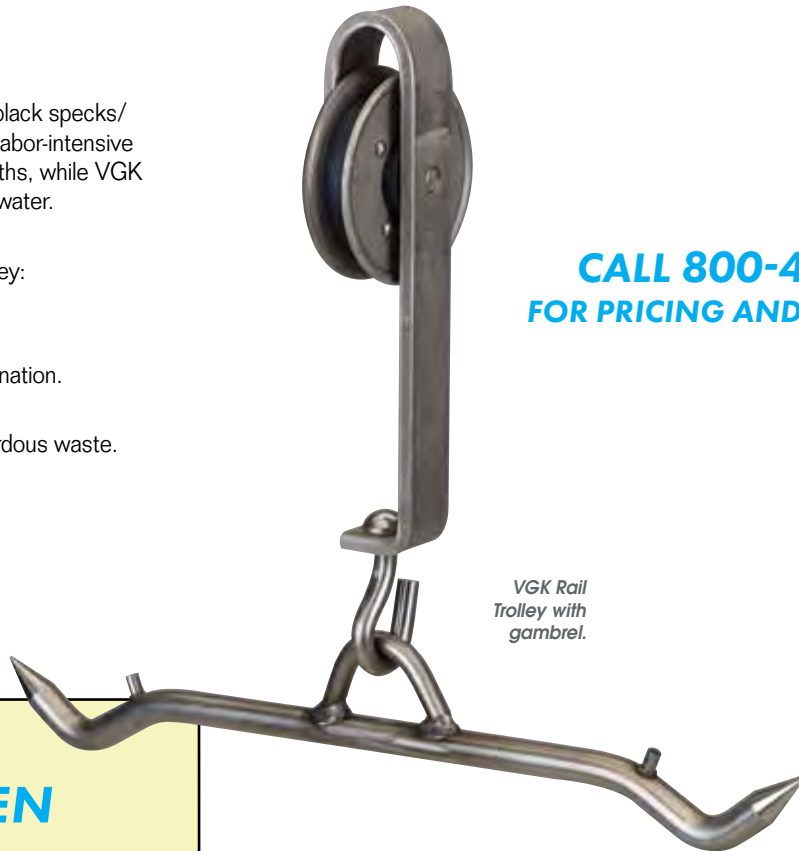
Old-fashioned cast-iron trolleys and carbon steel rail cause black specks/ rail dust that require oil, hazardous chemicals and wasteful, labor-intensive trimming. Most cast-iron trolley wheels wear out within months, while VGK wheels last for years and are cleaned with simple soap and water.

Additional benefits to the VGK Oil-Free Stainless Steel Trolley:

- No metal-to-metal contact wheel to rail.
- Eliminates oil costs.
- Eliminates trimming labor and waste due to trolley contamination.
- Eliminates black specks, rail dust, oil drips.
- Eliminates caustic cleaners used to derust trolleys, a hazardous waste.
- Lasts years instead of months.
- Consistent tare weight.
- Meets USDA, FDA and FSIS guidelines.
- Calculated return on investment — 1 year ROI.
- Reliable carrier of information technology.



**CALL 800-456-5624  
FOR PRICING AND INFORMATION**



VGK Rail Trolley with gambrel.



VGK Rail Trolley with hook.



VGK stainless radius rail.

### TRIM YOUR COSTS CLEAN AND GREEN



#### How long do your cast iron wheels last?

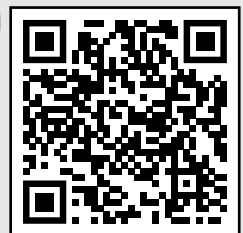
Start The VGK wheel on the left has been in continuous use for 12 YEARS and it's still rolling strong!



**CALL FOR DETAILS**



Patented wheel design requires NO OIL!



Scan this QR Code with your mobile device to watch a video about VGK Trolley Systems.

## Overhead Rail Trolleys

- Smooth rolling trolley wheels of quality cast iron, galvanized or stainless steel.
- Precision cast groove fits 3/8-inch or 1/2 inch-tracking.
- Wheels will not climb curves or switches.
- Trolleys are supplied with swivels.
- Standard wheel is plain bore with oil hole. Other options available include graphite bearings, oilite bearings, roller bearings and zerk grease fittings.

**NOTE:** When ordering, please specify if you would like hooks attached.



## Black Steel Finish — Cast Iron Construction

ITEM NO.	WHEEL DIA.		FRAME SIZE		FRAME LENGTH D	TOP OF RAIL TO TOP OF BAR E	TOP OF RAIL TO CENTER OF SWIVEL F	F.O.B. FACTORY	
	A	B C	B	C				WEIGHT	EACH
2321 7214	3-7/8"	3/8" x 1-1/4"	10-1/4"	4-1/2"	7-1/2"	4.40 lb	\$22.95		
2321 7216	3-7/8"	3/8" x 1-1/2"	10-1/4"	4-1/2"	7-1/2"	4.83 lb	22.95		
2321 7316	4-3/4"	3/8" x 1-1/2"	11-1/2"	5-1/4"	8"	5.89 lb	23.95		
2321 7318	4-3/4"	3/8" x 1-3/4"	11-1/2"	5-1/4"	8"	6.30 lb	31.95		
2321 7321	4-3/4"	3/8" x 1-3/4"	11-1/2"	5-1/4"	8"	6.30 lb	32.95		

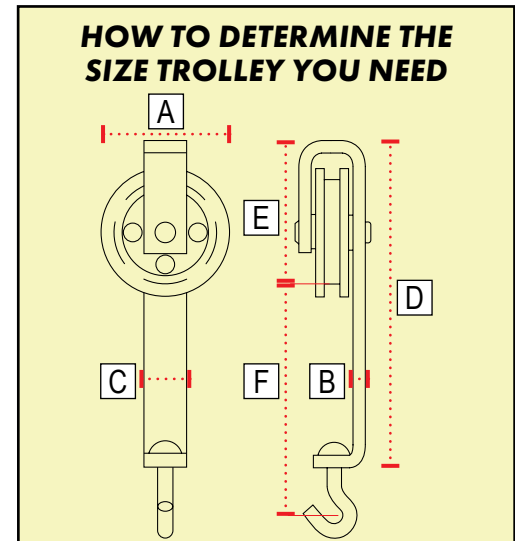
Item # 2321 7321 is HEAT TREATED for use with heavier products such as beef.

## Galvanized Steel Finish — Cast Iron Construction

ITEM NO.	WHEEL DIA.		FRAME SIZE		FRAME LENGTH D	TOP OF RAIL TO TOP OF BAR E	TOP OF RAIL TO CENTER OF SWIVEL F	F.O.B. FACTORY	
	A	B C	B	C				WEIGHT	EACH
2321 7212	3-7/8"	3/8" x 1-1/4"	10-1/4"	4-1/2"	7-1/2"	4.50 lb	\$31.95		
2321 7215	3-7/8"	3/8" x 1-1/2"	10-1/4"	4-1/2"	7-1/2"	4.93 lb	31.95		
2321 7315	4-3/4"	3/8" x 1-1/2"	11-1/2"	5-1/4"	8"	5.99 lb	29.95		
2321 7317	4-3/4"	3/8" x 1-3/4"	11-1/2"	5-1/4"	8"	6.40 lb	39.95		

## Stainless Steel Finish

ITEM NO.	WHEEL DIA.		FRAME SIZE		FRAME LENGTH D	TOP OF RAIL TO TOP OF BAR E	TOP OF RAIL TO CENTER OF SWIVEL F	F.O.B. FACTORY	
	A	B C	B	C				WEIGHT	EACH
2321 7115	3-7/8"	3/8" x 1-1/2"	10-1/4"	4-1/2"	7-1/2"	4.14 lb	\$97.95		
2321 7124	4-3/4"	3/8" x 1-1/2"	11-1/2"	5-1/4"	8"	5.11 lb	92.95		



## Replacement Parts

**Axle**

Stainless shown.

ITEM NO.	PRODUCT	F.O.B. FACTORY EACH
2321 8014	Black, 1/2" x 2-1/2"	\$1.95
2321 8026	Stainless Steel, 1/2" x 2-1/2"	4.95

**Swivel**

Stainless shown.

ITEM NO.	PRODUCT	EACH
2321 7912	1/2" Swivel	\$2.95
2321 7910	Stainless Steel, 1/2" Swivel	7.95

**Wheels Cast Iron Construction**

Black shown.

ITEM NO.	PRODUCT	EACH
2321 7821	Black, 4-3/4"	\$12.95
2321 7811	Black, 3.9"	10.95
2321 7812	Galvanized, 4-3/4"	16.95
2321 7810	Galvanized, 3.9"	12.95

## Stainless Steel Double Trolley with Roller Bearing Wheel

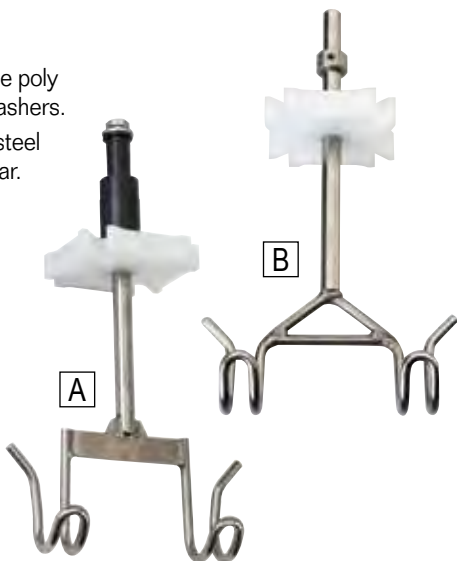
- Stainless steel 4 inch diameter roller bearing wheel for ease of rolling heavy loads.
- Wheels are heat treated to a high hardness for long wear.
- Rollers and balls are held separate in a cage to reduce friction.
- Suitable for brine chill installations.
- Wheel flanges are smooth and rounded to prevent track climbing.
- Frames made of solid 18-8 Type 304 stainless steel.
- Standard swivel is 5/8 inch. 3/4 inch also available.
- Electropolished to a bright, smooth finish.



ITEM NO.	WHEEL DIA.		FRAME SIZE		FRAME LENGTH D	TOP OF RAIL TO TOP OF BAR E	TOP OF RAIL TO CENTER OF SWIVEL F	WEIGHT	LOAD CAPACITY	SWIVEL SIZE	F.O.B. FACTORY
	A	B C	B	C							EACH
2321 7139	4"	3/8" x 1-1/2"	11-1/2"	5-1/8"	8-3/4"	15.63 lb	1,200 lb	5/8"	\$348.95		
2321 7141	4"	3/8" x 2"	11-1/2"	5-1/8"	8-3/4"	17.00 lb	1,800 lb	3/4"	394.95		

## Poultry Shackles

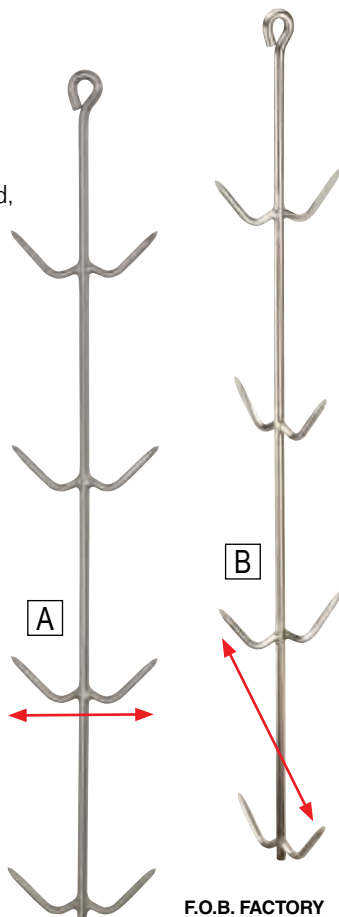
- A. High bar stainless steel shackle poly block with nylon sleeve and washers.
- B. Dapec shackle with stainless steel body and poly block metal collar.



ITEM NO.	PRODUCT	EACH
0891 24061	A. High Bar	\$79.95
0891 06131	B. Dapec Shackle	59.95

## Stainless Steel Fresh Meat Trees

- Sturdy type 304 stainless steel rod construction, 1/2 inch diameter.
- Hooks are 3/8 inch diameter, securely welded, ground and polished to a smooth finish.
- Hooks have sharp points and long taper for easy penetration.
- Available in both in-line and staggered hook arrangement.
- Electropolished to a bright, smooth finish.



**NOTE: Additional sizes are available. Call for more information.**

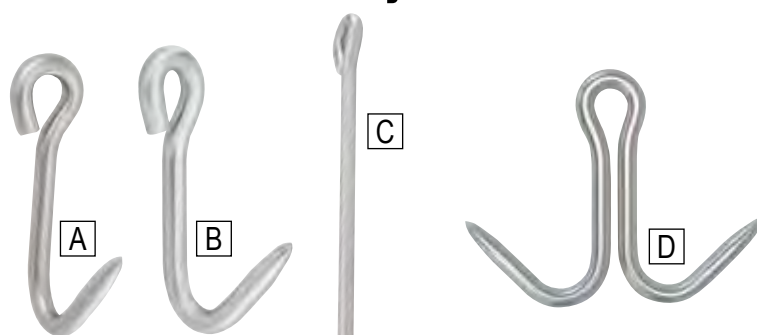
### A. In-Line

ITEM NO.	PRODUCT	SIZE	WEIGHT	EACH
2321 34101	4 Hooks	22"	1.9 lb	\$46.95
2321 34111	6 Hooks	36"	2.9 lb	51.95
2321 34121	8 Hooks	42"	3-1/2 lb	54.95
2321 34141	10 Hooks	45"	3.9 lb	65.95
2321 34151	12 Hooks	48"	4-2/5 lb	84.95

### B. Staggered

ITEM NO.	PRODUCT	SIZE	WEIGHT	EACH
2321 34501	4 Hooks	22"	1.9 lb	\$46.95
2321 34511	6 Hooks	36"	2.9 lb	51.95
2321 34521	8 Hooks	42"	3-1/2 lb	57.95
2321 34531	10 Hooks	45"	3.9 lb	65.95
2321 34541	12 Hooks	48"	4-2/5 lb	84.95

## Stainless Steel Trolley Hooks

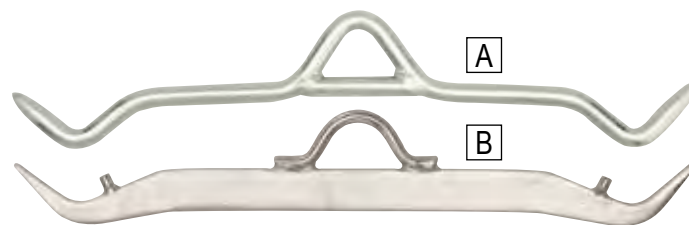


ITEM NO.	PRODUCT	SIZE	CAPACITY	WEIGHT	EACH
2321 3906	A. Single Hook	1/2" x 6"	700 lb	0.62 lb	\$7.95
2321 4007	B. Single Hook	5/8" x 7"	2,000 lb	1.10 lb	10.95
2321 39241	C. Single Hook	1/2" x 24"	700 lb	1.62 lb	17.95
2321 41121	D. Double Sheep Hook	1/2" x 6"	700 lb	1.03 lb	15.95
2321 41101	Double Sheep Hook	3/8" x 6"	300 lb	0.59 lb	13.95
2321 42121	Double Hook	3/8" x 12"	300 lb	0.68 lb	24.95
2321 42181	Double Hook	3/8" x 18"	300 lb	0.86 lb	26.95
2321 42241	Double Hook	3/8" x 24"	300 lb	1.05 lb	30.95
2321 42361	Double Hook	3/8" x 36"	300 lb	1.43 lb	36.95
2321 44121	Double Hook	1/2" x 12"	700 lb	1.20 lb	24.95
2321 44181	Double Hook	1/2" x 18"	700 lb	1.54 lb	28.95
2321 44241	Double Hook	1/2" x 24"	700 lb	1.87 lb	31.95
2321 44361	Double Hook	1/2" x 36"	700 lb	2.54 lb	36.95

**NOTE: Additional sizes are available. Call for more information.**

## Stainless Steel Hog Gambrels

- Made of solid 18-8 Type 304 stainless steel.
- Electropolished to a bright, smooth finish.
- Can be supplied with or without trolley rollers attached.
- A. Has welded center reinforcement.
- B. Flat bar has loop made of solid stainless steel.
- Hog gambrels can be made to meet your specifications.



ITEM NO.	PRODUCT	WEIGHT	F.O.B. FACTORY EACH
2321 4710	A. 5/8" x 21-1/2" Reinforced Center	2.39 lb	\$30.95
2321 4711	3/4" x 21-1/2" Reinforced Center	3.41 lb	34.95
2321 4714	B. 3/8" x 1-1/2" x 21-1/2" Flat Bar	3-2/5 lb	35.95

## Custom Flat Steel Bar Gambrels

- One piece solid stainless steel construction with rolled edges.
- True sanitary design, custom manufactured to your specifications with exact verified weight.



**Call for details and to place your order.**

## Weasand Clips

- Constructed of FDA/EU-approved material.
- Designed for quick and easy use.
- Applied properly, there is no chance of ingesta leakage or clip slippage.
- Clip breaks into small inert particles through most rendering systems.
- Available by the case or in a cartridge.
- Use of the cartridge with a dispenser eliminates clip cross contamination, speeds up access for line operator and reduces dropped and wasted clips.

### 1-Inch Lamb Weasand Clips

- Effective across a variety of species including calves, veal, goats and venison.
- Cartridge dispensers help eliminate cross contamination.
- 25 clips per cartridge.



Lambs, Sheep, Goats



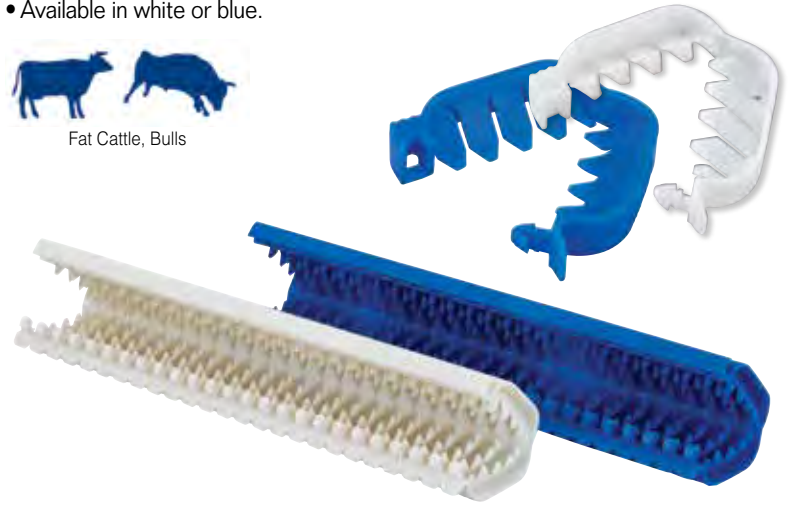
ITEM NO.	PRODUCT	COLOR	QUANTITY	CASE
5815 0285	1" Lamb Clip . . . . .	White . . . . .	Bulk Pack, 6,000/Case . . . . .	<b>\$189.95</b>
5815 0004	1" Lamb Clip . . . . .	White . . . . .	25/Cartridge, 4,000/Case . . . . .	<b>\$153.95</b>

### 2-Inch Beef Weasand Clips

- Available in white or blue.



Fat Cattle, Bulls



ITEM NO.	PRODUCT	COLOR	QUANTITY	CASE
5815 5001	2" Beef Clip . . . . .	White . . . . .	Bulk Pack, 2,000/Case . . . . .	<b>\$129.95</b>
5815 5003	2" Beef Clip . . . . .	Blue . . . . .	Bulk Pack, 2,000/Case . . . . .	<b>\$151.95</b>
5815 5002	2" Beef Clip . . . . .	White . . . . .	25/Cartridge, 2,000/Case . . . . .	<b>\$119.95</b>
5815 5004	2" Beef Clip . . . . .	Blue . . . . .	25/Cartridge, 2,000/Case . . . . .	<b>\$151.95</b>

## Weasand Rod

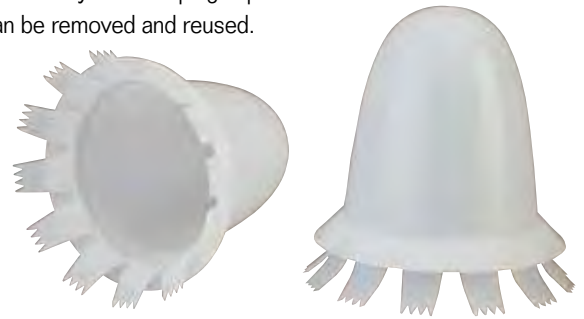
- Constructed of sanitary #304 stainless steel.
- 5 inches wide x 1 inch diameter welded handle.
- 24-inch long rod is 5/16 inch in diameter.



ITEM NO.	PRODUCT	EACH
2321 8055	Weasand Rod . . . . .	<b>\$61.95</b>

## Beef Throat Plug

- Reduces the risk of ingesta leakage before weasand clip is applied.
- Plug "fingers" securely hold the plug in place.
- Plastic plug can be removed and reused.



▶ 1,200 PER CASE.

ITEM NO.	PRODUCT	CASE
5815 1004	Beef Throat Plug . . . . .	<b>\$259.95</b>



## Weasand/Bung Ring Expander

- Used for expanding and installing weasand and bung rings.
- Light-weight and flexible for optimum operator comfort.
- All stainless construction for maximum hygiene.
- Weasand rings are designed for sealing the esophagus of slaughtered beef.
- Bung rings are designed for sealing the rectum of slaughtered beef.

**JARVIS**

MADE IN USA

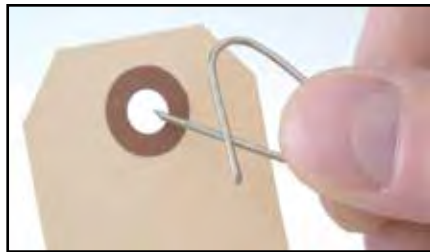
ITEM NO.	PRODUCT	EACH
3028 0139	Weasand/Bung Ring Pliers . . . . .	<b>\$54.95</b>
3028 3251	Weasand Rings, 5 mm ID (10,000 Rings/Bag) . . . . .	<b>\$399.95</b>
3028 0140	Bung Rings, 12 mm ID (3,000 Rings/Bag) . . . . .	<b>\$199.95</b>

PRICES ARE SUBJECT TO CHANGE • MINIMUMS MAY APPLY • VISIT OUR WEBSITE FOR CURRENT PRICING.

### Deadlock Tag Fasteners

- 17-gauge tinned wire sharply pointed on each end.

**NOTE: Tag not included.**



► 4 BOXES PER CASE.

ITEM NO.	PRODUCT	QUANTITY	BOX	
			1-3	4+
3489 31855	Deadlock Fasteners . . . . .	1,000/Box . . . . .	\$19.95	\$18.95
3489 1202	50 lb Bulk Box . . . . .	Approx. 22,000 Pieces . . . . .	239.95	---

### Processing Eyelet Tags



**NOTE: Other colors and sizes are available. Call for more information.**

► 1,000 PER BOX - 10 BOXES PER CASE.

ITEM NO.	COLOR	SIZE	BOX	
			1-9	10+
4494 14925	Manila . . . . .	.3-1/4" x 1-3/5", Size 2 . . . . .	\$21.15	\$20.15
4494 14955	Manila . . . . .	.4-3/4" x 2-2/5", Size 5 . . . . .	25.05	24.05
4765 13635	Green . . . . .	.3-3/4" x 1-9/10", Size 3 . . . . .	30.45	29.45
4765 13435	Red . . . . .	.3.75" x 1-9/10", Size 3 . . . . .	30.45	29.45
4765 00785	Blue . . . . .	.3-3/4" x 1-9/10", Size 3 . . . . .	30.75	29.75
4765 13235	Yellow . . . . .	.3-3/4" x 1-9/10", Size 3 . . . . .	30.45	29.45

### Water-Resistant Curing Tags



► 1,000 PER BOX - 10 BOXES PER CASE.

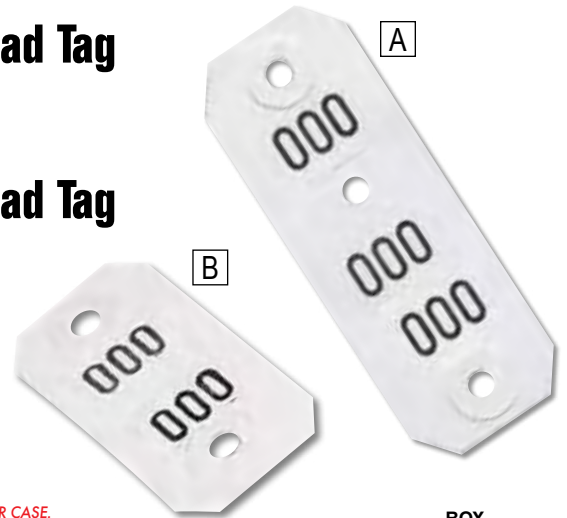
ITEM NO.	COLOR	SIZE	BOX	
			1-9	10+
4494 11915	A. White Curing Tag, No #s . . . . .	1-2/5" x 2-3/4" . . . . .	\$53.15	\$52.15
4494 31915	B. White Curing Tag, #000-999 . . . . .	1-2/5" x 2-3/4" . . . . .	102.65	101.65

### A. 2-Part Head Tag

- Numbered 000 - 999.
- Perforated.

### B. 3-Part Head Tag

- Numbered 000 - 999
- Perforated.



► 2,000 PER BOX - 10 BOXES PER CASE.

ITEM NO.	PRODUCT	SIZE	BOX	
			1-9	10+
4765 32025	A. 2-Part Head Tag, #000 to 999 . . . . .	1-1/4" x 1-1/4" . . . . .	\$51.35	\$50.35

► 1,000 PER BOX - 5 BOXES PER CASE.

ITEM NO.	PRODUCT	SIZE	BOX	
			1-4	5+
4494 14105	B. 3-Part Head Tag, #000 to 999 . . . . .	1-2/5" x 2-3/4" . . . . .	\$66.25	\$65.25

### 4-Part Hot Carcass Tags

- Space to list: Date, Lot No., Tag No. and Hot Weight.
- Adheres to hot carcass without deadlocks or other attachments.
- May be used for Federal Inspection. • 4-part, perforated.



► 1,000 PER BOX - 25 BOXES PER CASE.

ITEM NO.	PRODUCT	SIZE	BOX	
			1-24	25+
4765 32095	4-Part Hot Carcass Tags . . . . .	2.1" x 4-1/4" . . . . .	\$52.25	\$51.25

**SIGN UP FOR OUR eDEALS**

eDEAL SIGN-UP FORM AVAILABLE ON OUR WEBSITE.

[www.bunzlpd.com](http://www.bunzlpd.com)

Exclusive offers not found anywhere else!

## A. Laser 3<sup>®</sup> Tagging System

- Low-maintenance, easily repaired in the field.
- Stainless steel ejector needle can be easily replaced in less than two minutes.

ITEM NO.	PRODUCT	EACH
7735 4647	Tag Gun.....	\$40.95
7735 4665	Repl. Needles, Heavy-Duty (4/pack).....	36.95



A safety cover provided to snap over the injector needle when not in use.



## B. Laser 3<sup>®</sup> Fasteners

- 25 fasteners per clip.

▶ 1,000 FASTENERS PER PACKAGE - 50 PACKAGES PER CASE.

ITEM NO.	PRODUCT	PACKAGE	
		1-49	50+
7735 46505	Aqua Blue.....	\$10.95	\$9.95
7735 46535	Green.....	10.95	9.95
7735 46515	Yellow.....	10.95	9.95

## All-Weather<sup>®</sup> PaintStik<sup>®</sup>

- Use on wet or dry animals in holding pen.
- Non-toxic paint is safe for all types of livestock.
- Made in the USA.



▶ 12 PER BOX.

ITEM NO.	PRODUCT	BOX
1611 10115	Yellow.....	\$19.95
1611 10125	Pink.....	19.95
1611 10225	Red.....	19.95
1611 10265	Green.....	19.95
1611 10255	Blue.....	19.95
1611 10245	Orange.....	19.95

## All-Weather<sup>®</sup> Meat Markers

The ONLY marker registered by NSF for use in USDA inspected meat packing plants!



- NEW improved formula gives twice the output per stick with greater strength.
- For marking directly on animal carcasses and other meat parts.
- Wrapped in convenient paper holder.
- 33% larger than other brands.
- Made in the USA.



Marker can be used with optional marker holder.



▶ 12 PER BOX.

ITEM NO.	PRODUCT	BOX
1611 21025	Purple Marker.....	\$48.95
1611 53001	Optional Marker Holder.....	20.55

## Self-Inking Stencil Brush

- 2-inch long bristles.
- 1-1/4 inch diameter ink reservoir barrel.



ITEM NO.	PRODUCT	EACH
3599 03221	Stencil Brush.....	\$76.95
3599 00011	1 qt. Black Ink.....	89.95

## Livestock ID Tag Cement

- Adheres to animal hair in both hot and cold temps.



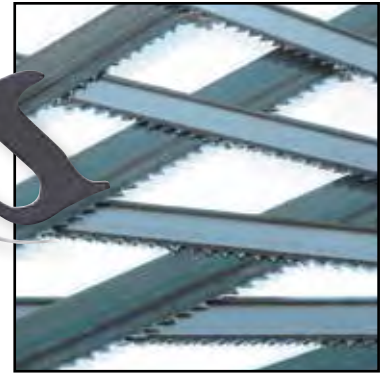
ITEM NO.	PRODUCT	EACH
3981 25181	6 oz. Tube.....	\$6.55

## Stainless Steel Trigger Action Market Handsaws

- Stainless steel frame.
- Black ABS plastic handle.
- Available in two sizes.



**NOTE: Handsaws includes 12 FREE Blades!**



ITEM NO.	PRODUCT	EACH
3363 18201	20" Handsaw w/12 FREE Blades	\$69.95
3363 0825	25" Handsaw w/12 FREE Blades	86.95

## Stainless Steel Trigger Action Handsaws

- Trigger blade tightener.
- Stainless steel frame.
- Ivory ABS plastic handle.

**NOTE: Buy replacement blades by the dozen.**



ITEM NO.	PRODUCT	EACH
6466 9018	20" Market Saw	\$80.95
6466 9011	25" Market Saw	80.95
3363 0020	Replacement Blades, 20" (1 Dozen)	37.95
3363 0025	Replacement Blades, 25" (1 Dozen)	38.95
3363 0027	Replacement Blades, 27" (1 Dozen)	39.95
6466 0013	Replacement Handle	12.95
6466 0015	Replacement Nut (Need 3 per Handle)	0.55
6466 0016	Replacement Screws (Need 3 per Handle)	0.55

## Hog Toenail Puller

- 1 inch between stainless steel points.
- Stainless steel T-handle.
- Overall length: 6 inches.



ITEM NO.	PRODUCT	EACH
2321 8054	Toenail Puller	\$44.95

## Spinal Cord Remover

- Pork blade length: 1 inch.
- Beef blade length: 1-1/2 inches.
- Constructed of stainless steel to resist rusting.
- Overall length: 7-1/2 inches.
- Machine washable.
- Heavy-duty plastic handle.



ITEM NO.	PRODUCT	EACH
6466 0600	Spinal Cord Remover	\$26.35
6466 0601	Beef Replacement Blade	3.05
6466 0602	Pork Replacement Blade	3.10

## Poultry Lung Scraper

- Overall length: 12-1/2 inches. • Blade: 1 inch x 1-3/4 inches.
- Stainless steel with plastic handle.



ITEM NO.	PRODUCT	EACH
2990 10561	Lung Scraper	\$85.95

## Replacement Blades for Packer Saws and Splitting Saw

ITEM NO.	PRODUCT	EACH
3363 0020	Replacement Blades, 20" (1 Dozen)	\$37.95
3363 0019	Replacement Blades, 19" (1 Dozen)	35.95
3363 0030	Replacement Blades, 30" Splitting Saw (1 Dozen)	40.95

## Magnetic Shroud Pin

- Overall length: 4-3/4 inches.
- Stainless steel.



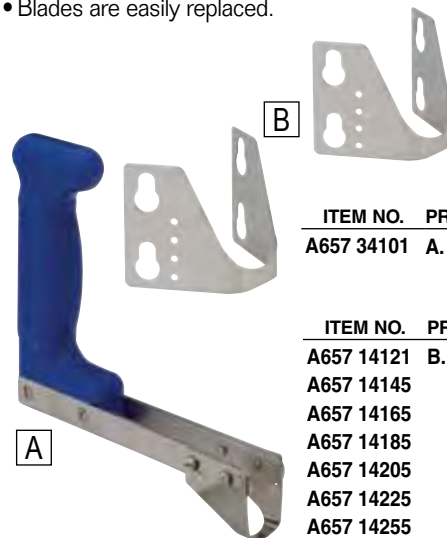
▶ 1,000 PER CASE.

ITEM NO.	PRODUCT	CASE
2321 2112	Shroud Pin	\$569.95

## Rib Pulling Handle and Blades

- Molded plastic handle. • 6-1/4 inch stainless steel arm.
- Blades are easily replaced.

**NOTE: Blades and handle are sold separately.**



ITEM NO.	PRODUCT	EACH
A657 34101	A. Rib Pulling Handle	\$58.95

▶ 5 PER PACK.

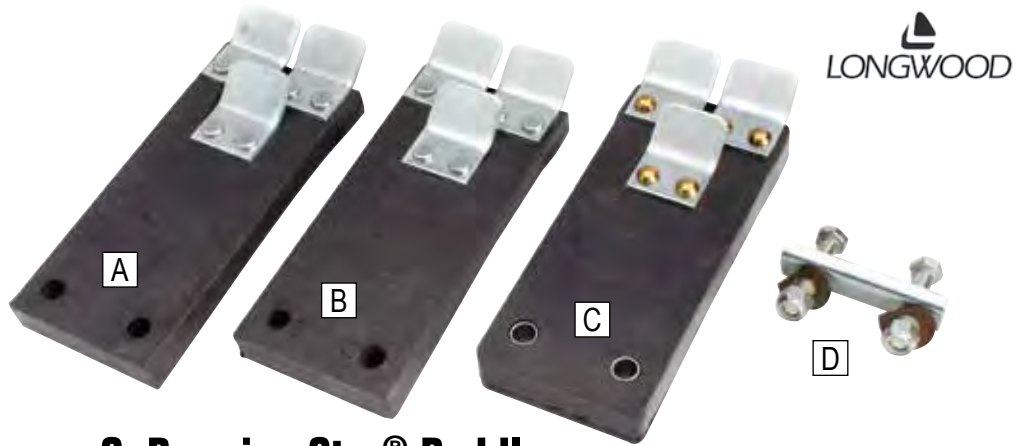
ITEM NO.	PRODUCT	PACK
A657 14121	B. 12 mm Blade	\$20.95
A657 14145	14 mm Blade	20.95
A657 14165	16 mm Blade	20.95
A657 14185	18 mm Blade	20.95
A657 14205	20 mm Blade	20.95
A657 14225	22 mm Blade	20.95
A657 14255	25 mm Blade	20.95



## Hog Scraper Paddles

- Case hardened steel knives.
- Durable rubber cover is easy to clean.
- Bias cut fabric stretches to maintain contact between knives and carcass.
- Fabric reinforcement of compression section ensures durability for the life of the paddle.

**NOTE: Attachment hardware sold separately.**



### A. 5-Star Paddles

- Rubber wedge for added stiffness — paddles last 4 to 5 times longer than conventional types.
- Substantially reduce machine downtime and replacement costs.
- 1/2-inch mounting holes, 2-1/2-inch mounting hole distance.

ITEM NO.	PRODUCT	SIZE	EACH
3939 0001	5-Star Paddle, 3 Cleat	4" x 9"	\$57.05

### B. 7-Star Paddles

- Heavy 5-ply fabric wedge increases stiffness and durability — paddles last up to 10 times longer than conventional types.
- 1/2-inch mounting holes, 2-1/2-inch mounting hole distance.
- Handle hogs up to 550 pounds.
- Work fast and clean, even during "hard hair" season.

ITEM NO.	PRODUCT	SIZE	EACH
3939 00171	7-Star Paddle, 3 Cleat	4" x 9"	\$56.05
3939 9015	7-Star Paddle, 5 Cleat	4" x 9"	81.75

### C. PremiumStar® Paddles

*Years of research and in-plant testing have proven that this is the paddle to use in high-impact areas for the most punishing of applications.*

- Constructed of super-strong material compound to improve performance and provide longer life and lower maintenance.
- Paddles retain their operating stiffness — won't bow after a few days.
- Includes steel bushings.
- 1/2-inch mounting holes, 2.44-inch mounting hole distance.

ITEM NO.	PRODUCT	SIZE	EACH
3939 10031	PremiumStar® Paddle, 3 Cleat	4" x 9"	\$59.15

### D. Attachment Hardware

- For use with all paddles listed above. (Not for use with backers.)
- Each set contains the necessary hardware to attach one paddle to de-hairing machine.
- Set contains: 1 bolt plate, 2 cap screws, 2 cut washers and 2 elastic stop nuts.

ITEM NO.	PRODUCT	EACH
3939 0016	Attachment Hardware for 4" x 9" Paddles	\$14.95

## Hog Polishing Whips

- Constructed of heavy-duty, durable plastic for long life and optimum performance.
- 0.398-inch bush hole.
- Designed for today's modern hog processing lines.



ITEM NO.	PRODUCT	EACH
3939 00041	Natural Color	\$6.65
3939 00021	Brown Color	6.65

Available in two colors.

## Old Baldy® Hog Scald

- Effective on tough bristles, reduces scraping labor.
- Contains no inert ingredients or fillers.
- Highly concentrated, economical to use.
- Very effective in hard water, contains a powerful cleaning agent and water softener.



- Keeps grease in suspension, no scum, film or slime is deposited on the last hogs in the scalding vat.
- Complete instructions with every order.

ITEM NO.	PRODUCT	EACH
3032 9010	10 lb Hog Scald	\$32.95

## Bell Hog Scraper

- 4-3/4-inch bell shaped carbon steel blade.
- Level ground edge.
- White poly handle.



ITEM NO.	PRODUCT	EACH
3955 01101	Bell Hog Scraper	\$34.95

## Hog Hide Shaver

- Pistol-grip style poly handle.
- Replaceable skinner blades.



ITEM NO.	PRODUCT	EACH
0891 00021	Hog Hide Shaver Handle	\$69.95
5880 3062	Stainless Steel	89.95



# Poultry Picking Fingers

Suitable for plucking all poultry types.

- Maximum flexibility and excellent picking performance without damaging skin.
- Various round, oval, flat, specialty shapes and colors available.
- Compatible with: Meyn, Stork, Bayle, Systemate, Linco and others.
- Available models: AM, AM112, AMC, AMN, J260, L, MG, MG160, PL2, RL2, RL3, RL10, RL92.

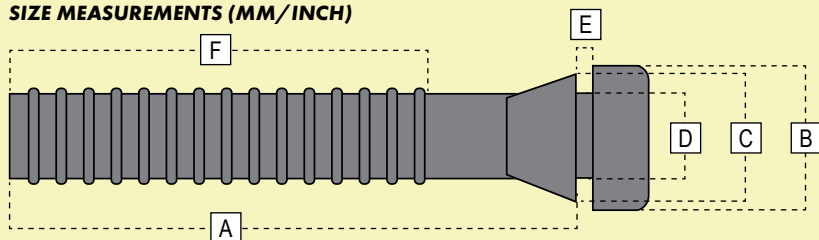


Scan this QR code with your mobile device to watch a video about Plumatech Picking Fingers.

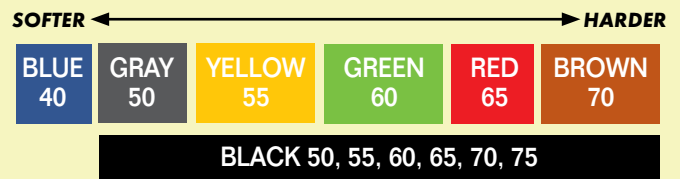


PRODUCT	ITEM	DESCRIPTION	A	B	C	D	E	F	HARDNESS	QTY/CASE
	AM	Flat Finger, ribbed	133 mm 5.24 in.	36 mm 1.42 in.	28.5 mm 1.12 in.	24 mm 0.94 in.	3.5 mm 0.138 in.	90 mm 3.54 in.	All Available	250
	AM112	Flat Finger, ribbed	112 mm 4.41 in.	36 mm 1.41 in.	33 mm 1.29 in.	27 mm 1.06 in.	3 mm 0.118 in.	75 mm 2.95 in.	All Available	300
	AMC	Flat Finger, ribbed	165 mm 6.49 in.	36 mm 1.41 in.	33 mm 1.29 in.	27 mm 1.06 in.	2 mm 0.078 in.	120 mm 4.72 in.	All Available	200
	AMN	Oval Finger, ribbed	125 mm 4.92 in.	34 mm 1.34 in.	30 mm 1.18 in.	25 mm 0.985 in.	3 mm 0.118 in.	83 mm 3.26 in.	All Available	250
	J260	Long Round Finger	250 mm 10.24 in.	27 mm 1.07 in.	22 mm 0.868 in.	18 mm 0.66 in.	2.5 mm 0.078 in.	220 mm 8.66 in.	All Available	250
	L	Round Finger, ribbed	125 mm 4.92 in.	27 mm 1.07 in.	23.5 mm 0.92 in.	20 mm 0.78 in.	6 mm 0.236 in.	89 mm 3.5 in.	All Available	400
	MG	Round Finger, ribbed	130 mm 5.11 in.	37 mm 1.45 in.	30 mm 1.18 in.	25 mm 0.985 in.	3.5 mm 0.14 in.	86 mm 3.38 in.	All Available	250
	MG160	Round Finger, ribbed	160 mm 6.29 in.	37 mm 1.45 in.	30 mm 1.18 in.	25 mm 0.985 in.	3 mm 0.118 in.	115 mm 4.52 in.	All Available	250
	PL2	Round Finger, patterned	80 mm 3.15 in.	28.2 mm 1.11 in.	23.5 mm 0.92 in.	19.5 mm 0.77 in.	2.2 mm 0.086 in.	55.5 mm 2.196 in.	All Available	500
	RL2	Round Finger, ribbed	85 mm 3.34 in.	29 mm 1.14 in.	26 mm 1.023 in.	22 mm 0.87 in.	3 mm 0.118 in.	55 mm 2.165 in.	All Available	500
	RL3	Round Finger, patterned	80 mm 3.15 in.	28 mm 1.10 in.	24 mm 0.94 in.	20 mm 0.79 in.	2 mm 0.078 in.	50 mm 1.97 in.	All Available	500
	RL10	Round Finger, ribbed	87 mm 3.425 in.	30 mm 1.18 in.	25 mm 1.023 in.	20.5 mm 0.82 in.	7.5 mm 0.29 in.	55 mm 2.165 in.	All Available	500
	RL92	Round Finger, ribbed	92 mm 3.62 in.	30 mm 1.18 in.	24.5 mm 0.96 in.	21 mm 0.827 in.	2 mm 0.078 in.	54 mm 2.12 in.	All Available	500

SIZE MEASUREMENTS (MM/INCH)



DUROMETER: COLOR AND HARDNESS



PRICES ARE SUBJECT TO CHANGE • MINIMUMS MAY APPLY • VISIT OUR WEBSITE FOR CURRENT PRICING.



## Chicken and Turkey Diaphragms

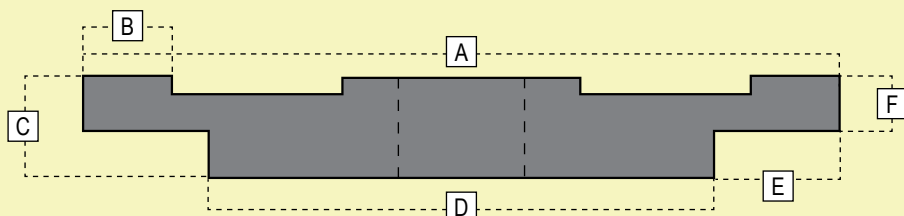
For Automatic Deboning Machines

- External diameter: 9 cm. • Internal diameters: 12 cm to 32 cm. • Thickness: 1 cm.

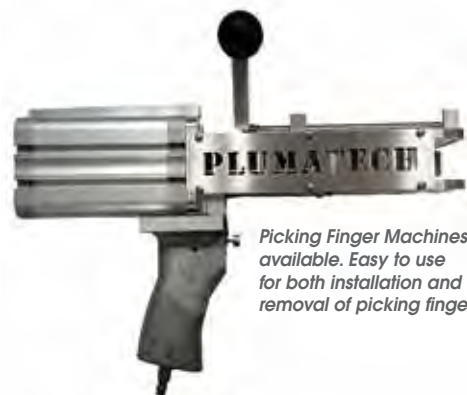
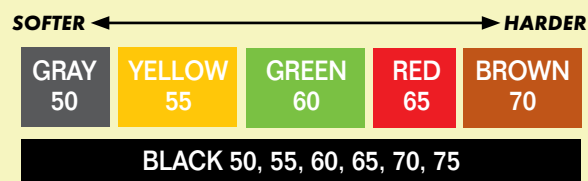
A	B	C	D	E	F	QTY/CASE
90 mm	10 mm	10 mm	60 mm	15 mm	5 mm	300
3.54 in.	0.39 in.	0.39 in.	2.36 in.	0.59 in.	0.19 in.	



### SIZE MEASUREMENTS (MM/INCH)



### DUROMETER: COLOR AND HARDNESS



Picking Finger Machines available. Easy to use for both installation and removal of picking fingers.

Picking machines, puller wheels and additional Plumatech products available. CALL 800-456-5624.

## PLC-140 Picking Finger Machine

Cuts and pulls all types of picking fingers from 80 mm to 140 mm.

- Length: 345 mm. • Height: 235 mm. • Weight: 7 pounds. • Operating Pressure: 7-bar.

## Impianti Drive Wheel

Fits Impianti counter rotational picker machine.

- Outside Diameter: 18.3 inches. • Inside Diameter: 13.58 inches.
- Tooth Pattern: 36 teeth.



ITEM NO.	MFR. NO.	
6968 00031	RP-1000	CALL FOR PRICING

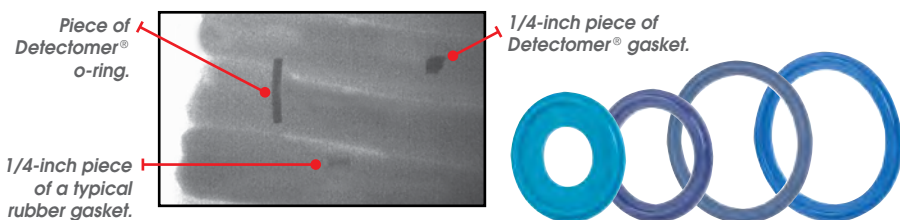
## AVAILABLE NOW FROM BPD!

Metal Detectable and X-Ray Inspectable Gaskets and O-Rings Specifically for the Food Industry

### Detectomer® Sanitary Gaskets and O-Rings

Designed to work with existing stainless steel piping and hose systems, Detectomer® products can be spotted by in-line x-ray inspection and metal detection systems as well as magnetic separators.

- Available in a variety of materials — Tuf-Steel®, Buna, Silicone, EPDM, Acetal, FKM Fluoroelastomer, UHMW and Polyurethane.
- Typical application for products in aluminum pans and tins, metalized film packaging, metal or aluminum cans, flow-wrapping lines, hermetically sealed bags, etc.



## DIN/ISO Gaskets

Gaskets come with a Certificate of Compliance indicating the applicable lot number and all relevant order information to ensure full traceability at all times.

- Available in a variety of materials and sizes.



CALL 800-456-5624 for more information.

## Hog Tattooer

- For use with inking pad (sold separately).
- Accepts interchangeable numerals or letters (sold separately).
- Recommended when frequent interchanging of characters is required.

**NOTE: Poly-Nylon needlepoint tattoo inserts sold separately below. Metal needlepoint inserts also available. Call for more information.**



F.O.B. FACTORY  
EACH

ITEM NO.	PRODUCT	F.O.B. FACTORY EACH
6945 00611	4-Digit, Fiberglass Handle	\$83.45

## Poly-Nylon Needlepoint Tattoo Inserts



F.O.B. FACTORY  
▶ 10 PER CASE.

### Letter Inserts

ITEM NO.	PRODUCT	ITEM NO.	PRODUCT	EACH	
				1-9	10+
6945 22001	"A" Insert	6945 22131	"N" Insert	\$6.15	\$5.15
6945 22011	"B" Insert	6945 22141	"O" Insert	6.15	5.15
6945 22021	"C" Insert	6945 22151	"P" Insert	6.15	5.15
6945 22031	"D" Insert	6945 22161	"Q" Insert	6.15	5.15
6945 22041	"E" Insert	6945 22171	"R" Insert	6.15	5.15
6945 22051	"F" Insert	6945 22181	"S" Insert	6.15	5.15
6945 22061	"G" Insert	6945 22191	"T" Insert	6.15	5.15
6945 22071	"H" Insert	6945 22201	"U" Insert	6.15	5.15
6945 22081	"I" Insert	6945 22211	"V" Insert	6.15	5.15
6945 22091	"J" Insert	6945 22221	"W" Insert	6.15	5.15
6945 22101	"K" Insert	6945 22231	"X" Insert	6.15	5.15
6945 22111	"L" Insert	6945 22241	"Y" Insert	6.15	5.15
6945 22121	"M" Insert	6945 22351	"Z" Insert	6.15	5.15
6945 50291	"A - Z" Insert Set			96.95	91.75

### Number Inserts

▶ 10 PER CASE.

ITEM NO.	PRODUCT	ITEM NO.	PRODUCT	EACH	
				1-9	10+
6945 22251	"0" Insert	6945 22301	"5" Insert	\$6.15	\$5.15
6945 22261	"1" Insert	6945 22311	"6" Insert	6.15	5.15
6945 22271	"2" Insert	6945 22321	"7" Insert	6.15	5.15
6945 22281	"3" Insert	6945 22331	"8" Insert	6.15	5.15
6945 22291	"4" Insert	6945 22341	"9" Insert	6.15	5.15
6945 50301	"0 - 9" Insert Set			42.35	37.25

## Cold Ink Stamps

- Hand engraved brass with stainless steel border.
- Sharp, deep-cut engraved lettering produces a legible stamp every time.
- Each stamp has a serial number that is registered with the USDA Food Safety and Inspection Service.



F.O.B. FACTORY

ITEM NO.	PRODUCT	F.O.B. FACTORY EACH
3778 1723	3/4" Dia. Federal Insp. Stamp	\$187.95
3778 1724	1-1/4" Dia. Federal Insp. Stamp	188.95
3778 1725	1-3/4" Dia. Federal Insp. Stamp	189.95
4313 00851	Small Round Plastic Handle	9.95
3778 4801	12" Hammer Handle	217.95
3778 4802	18" Hammer Handle	213.95
3778 4800	24" Hammer Handle	211.95
3778 4803	36" Hammer Handle	205.95

## Inking Pad

- Neoprene sponge rubber pad designed for use with tattooers.
- Aluminum handle.
- Replacement pads available.
- 5-1/2 inches square.



ITEM NO.	PRODUCT	F.O.B. FACTORY EACH
6945 00221	Pad, Aluminum Handle	\$49.35
6945 0001	Replacement Pad	9.25

## Custom Engraved Cold Ink Stamps

- Cold ink stamps for custom and processed meat.
- Bronze cast with plastic handle.



ITEM NO.	PRODUCT	F.O.B. FACTORY EACH
3778 0001	Custom Square	
3778 0002	Custom Triangle	CALL FOR PRICING
3778 0012	Custom Rectangle	CALL FOR PRICING
3778 0008	Custom Round	CALL FOR PRICING

## Pre-Cut Cold Ink Stamps

- Cold ink stamps for custom and processed meat.
- Overall stamp size: 1-1/2 inches x 3 inches.
- Bronze cast with plastic handle.



ITEM NO.	PRODUCT	F.O.B. FACTORY EACH
7584 2392	"NOT FOR SALE"	\$314.95
3778 7883	"US Inspected and Condemned"	269.95
3778 22321	Est. #on "NOT FOR SALE" Stamp	232.95
3778 82521	USDA Inspected & Condemned w/Est #.	250.95

**NOTE: State Inspection Stamps also available. Call for details.**



**NOTE: Orders for Federal hot and cold stamps must be accompanied by the numbered authorization certificate FSIS Form 5200-7 signed by your inspector. CALL FOR DETAILS. Numbered dies cannot be returned, please verify all numbers before ordering.**

# Inks and Paste

Guaranteed fast dry formula.

- Meet all requirements for use in inspected plants.
- Quick drying formula Perma-Brite is used for roller markers and cold ink stamps.
- Regular drying formula purple ink is used for cold branding and stamping.



▶ FOUR, 1-GALLON BOTTLES PER CASE.

ITEM NO.	PRODUCT	EACH	
		1-3	4+
3199 78121	A. GL-80 Economy Purple Ink	\$30.95	\$29.95
3199 51301	B. GL-31 Purple Perma-Brite Ink	40.95	39.95
3199 00051	C. GL-33 Red Perma-Brite Ink	50.95	49.95
3199 00061	D. Brilliant Green #2 Ink	20.95	19.95

# Hog Tattoo Paste

Extra thick formula.

- Black paste-like ink is used with the needle-type hog slapper tattooer.
- Effective and fast method of tattooing hogs.
- Remains legible through scalding.



▶ 4 PER CASE.

ITEM NO.	PRODUCT	EACH	
		1-3	4+
3199 58831	1 Gallon, Green	\$43.95	\$42.95

# CLD Green Denaturant Concentrate®

- Green color will permanently identify condemned product.
- Economical to use: mix 4-ounces concentrate with 1-gallon water.



▶ FOUR, 1-GALLON BOTTLES PER CASE.

ITEM NO.	PRODUCT	EACH	
		1-3	4+
3199 78161	1 Gallon, Green	\$30.95	\$29.95

# Liquid Denaturant

- Cleans easily with water.
- Can be used on meat and poultry; safe in pet food.
- A non-toxic, odor-free denaturant consisting of all natural ingredients.



▶ FOUR, 1-GALLON BOTTLES PER CASE.

ITEM NO.	PRODUCT	EACH	
		1-3	4+
3199 36651	1 Gallon, Black	\$14.95	\$13.95
3199 3060	1 Gallon, Blue	26.95	25.95

NOTE: Blue, Red and Black powdered denaturant available. Call for details and ordering info.

Order \$400 or more and receive  
**FREE SHIPPING**

\*Does not include UPS Next Day Air, 2nd Day or 3rd Day Select. This offer good only on orders shipped UPS Ground in the 48 contiguous states. Certain items may not qualify. Based on dimensional weight we will determine the most efficient means of shipping, either UPS or LTL. Products may ship by truckline.

INKS, TATTOO PASTE AND DENATURANT

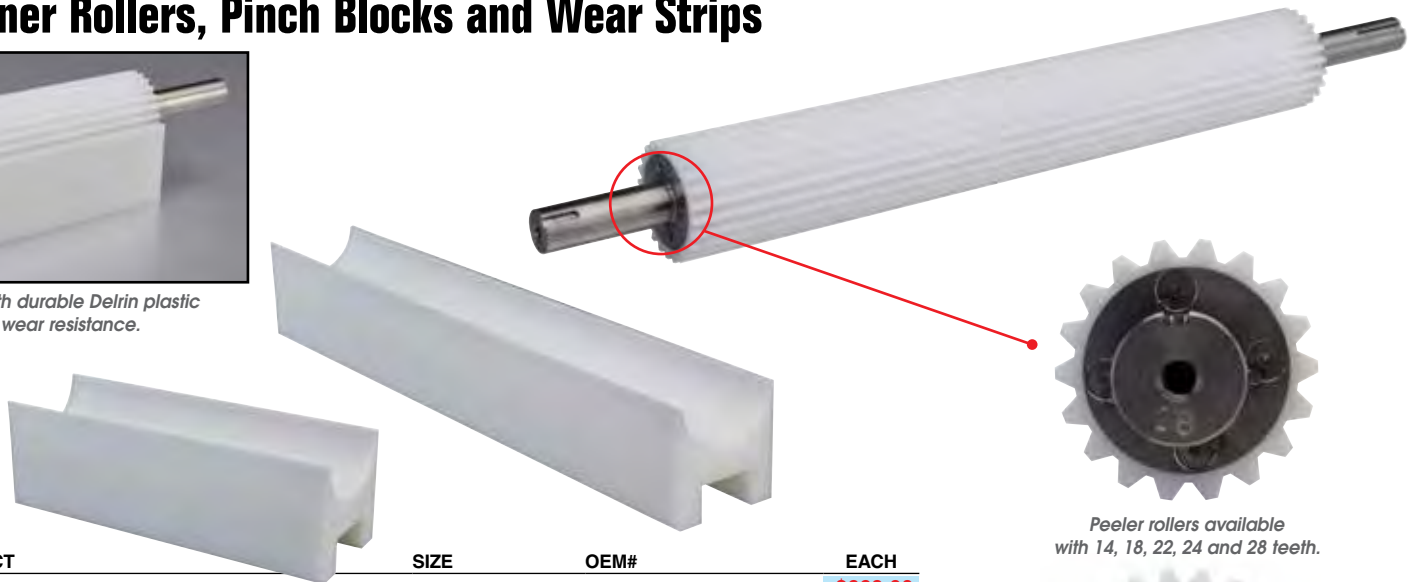
PRICES ARE SUBJECT TO CHANGE • MINIMUMS MAY APPLY • VISIT OUR WEBSITE FOR CURRENT PRICING.

# Prime Skinner Rollers, Pinch Blocks and Wear Strips



Manufactured with durable Delrin plastic for added wear resistance.

Rollers and Pinch Blocks available in 12", 18" and 24" sizes.



Peeler rollers available with 14, 18, 22, 24 and 28 teeth.

ITEM NO.	PRODUCT	SIZE	OEM#	EACH
H565 14241	10047-1424 Roller Skinner, 14-Tooth	24" Shaft	TS020J/TP028P	\$669.00
H565 18181	10047-1818 Roller Skinner, 18-Tooth	18" Shaft	SP020D/SP028B	615.00
H565 18241	10047-1824 Roller Skinner, 18-Tooth	24" Shaft	TS020C/TP028	669.00
H565 20241	10047-2024 Roller Skinner, 20-Tooth	24" Shaft	TS020A/TP028B	669.00
H565 22181	10047-2218 Roller Skinner, 22-Tooth	18" Shaft	SP020F/SP028B	609.00
H565 22241	10047-2224 Roller Skinner, 22-Tooth	24" Shaft	TS020H/TP028	669.00
H565 24121	10048-2412 Roller Skinner, 24-Tooth	12" Shaft	SK202B/SK028A	419.00
H565 24241	10047-2424 Roller Skinner, 24-Tooth	24" Shaft	TS020E/TP028	669.00
H565 26241	10047-2624 Roller Skinner, 26-Tooth	24" Shaft	TS020G/TP028B	669.00
H565 18251	10074-1824 Roller Skinner, 18-Tooth, Waterless	24" Shaft	20678	854.00
H565 28241	10074-2824 Roller Skinner, 28-Tooth, Waterless	24" Shaft	34412	689.00
H565 20121	10071-2012 Roller Skinner, 20-Tooth, Ertalyte	12" Shaft	TD1004	451.00
H565 28121	10071-2812 Roller Skinner, 28-Tooth, Ertalyte	12" Shaft	TD1004	451.00
H565 70121	10070-12 Block Pinch Skinner, Ertalyte	12" Shaft	TT031AE	543.00
H565 51121	100751-12 Block Pinch Skinner, Delrin	12" Shaft	TT031A	319.00
H565 52181	10042-18 Block Pinch Skinner, Delrin	18" Shaft	SP031A	440.00
H565 53241	10053-24 Block Pinch Skinner, Delrin	24" Shaft	TS031A	492.00
H565 10731	10073 Block Pinch Skinner, Waterless Delrin	24" Shaft	28486	615.00
H565 10491	10049 Upper Wear Strip, Delrin		TT130A	461.00
H565 10541	10054 Counter Roller Assembly	24" Shaft	15543	684.00

Delrin upper wear strips.

## Poultry De-Boning Cones

- Cones made of stainless steel.
- Threaded for easy assembly.
- Cone shafts threaded on both ends.



ITEM NO.	PRODUCT
H179 10041	SS Poultry De-Boning Cone, Flat Bottom 4"
H179 10051	SS Poultry De-Boning Cone, Round Bottom 4"
H179 10081	8" Cone Shaft, Threaded
H179 10091	9" Cone Shaft, Threaded
H179 10101	10" Cone Shaft, Threaded

## Char Marking Rings

- When precooking patties (for example, beef, chicken or soy patties) and other food products at a high production rate for fast food or for frozen dinners, it is often desirable to simulate the effect of broiling food products on a grill, which is commonly called "char marking" in the food processing industry.
- Char marking improves the eye appeal of the product by branding spaced parallel stripes, giving the appearance that the product was broiled over charcoal on spaced grill bars.



ITEM NO.	PRODUCT
H565 00031	6" Pegged
H565 00041	6" Blind
H565 00061	4" Pegged
H565 00071	4" Blind



CALL 800-456-5624 FOR PRICING AND MORE INFORMATION