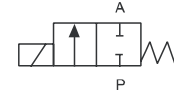


# PU 220 Zero Operation

2/2 Way Solenoid Valve. Normally closed,  
Diaphragm Port sizes 1/8" to 1"

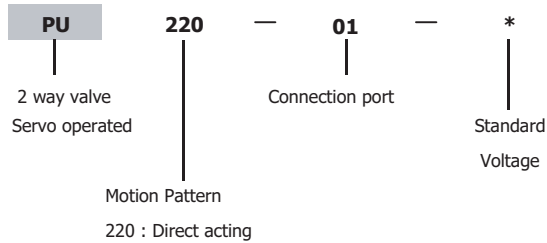


**Compact and good appearance**

**Direct acting , diaphragm structure , can work at zero pressure**

**Coil made from H class wire , thermosetting plastic encapsulating**

**Reach IP65 protection class with plug  
High reliability, long life**



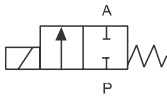
Ambient Temperature -5°C + 80°C

Medium Temperature 0°C + 90°C : brass body

\* Response times 0.5 - 1 seconds( depending on orifice and differential pressure )

ITEM-NO.	Orifice (mm)	Port Connect (inch)	Cv-value Water (M <sup>3</sup> /h)	Seal material	Operating Pressure (Mpa)
PU220-01	1.5	G1/8	0.1	NBR	0 - 0.7
PU220-02	2.3	G1/4	0.18	NBR	0 - 0.7
PU220-03	8	G3/8	1	NBR	0 - 0.7
PU220-04	13	G1/2	4	NBR	0 - 0.7
PU220-06	20	G3/4	8.6	NBR	0 - 0.7
PU220-08	25	G1	11	NBR	0 - 0.7

**SYMBOL :**



**OVERALL DIMENSIONS :**

Model	(G)	A	B	C
PU220-01	G1/8	22	72	22
PU220-02	G1/4	35	76	25.4
PU220-03	G3/8	55	80	30
PU220-04	G1/2	67	101	48
PU220-06	G3/4	71	107	48
PU220-08	G1	96	120	70

