

# SCG Cement Wood MEGA FLOOR

Big scales facilitating installation

For both exterior and interior uses

Less frames in installation ( 600 mm.\* for distance )

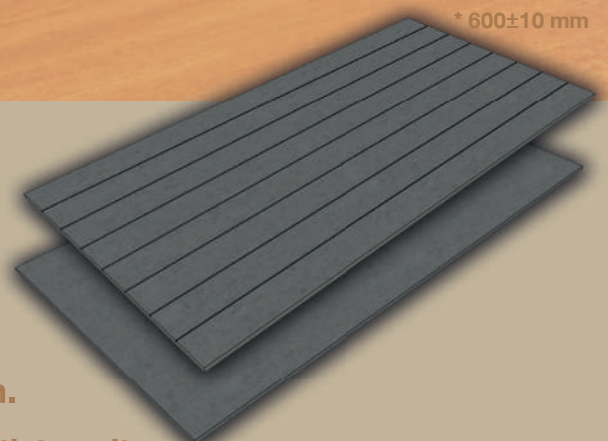
## MEGA FLOOR

**Bigger scales 1220 x 2440 mm.**

The board is made of portland cement and wood, which is a very flexible material, through high pression.

These make the board strong, flexible, durable and anti-termite.

Rapidly renewable materials 30%



## ( MEGA FLOOR )



Anti-termite



Nonflammable



Money and  
time saving



Good for respiration



Durable against  
extreme weather



Easy for installation

## Size / Thickness / Weight

Types	Wood-like surface with Cement color ( Grain )	Wood-like surface with Cement color ( V Groove Grain 6" )
		
<b>Size :</b> ( Wide x Long x Thick )	1220 x 2440 x 20 mm. 1220 x 2440 x 24 mm.	1220 x 2440 x 20 mm. 1220 x 2440 x 24 mm.
<b>Weight per pieces</b> - thickness 20 mm. - thickness 24 mm.	83 kg. 100 kg.	83 kg. 100 kg.
<b>Weight (kg./Sq.m.)</b> - thickness 20 mm. - thickness 24 mm.	29 kg. 35 kg.	29 kg. 35 kg.

## Recommended equipment and chemicals



Screw with 45 mm. long



Screw driver



1800-watt Circular saw  
(5,800 rounds per second)



Circular saw blade  
(more than 40 sawtooth)



Grout Adhesive Poly-U seal  
to put between each piece



Beger Acrylic Filler F-200  
To fix nail heads  
and gap between pieces



Primer for  
Fiber cement SCG



Paint for Flooring  
Fibercement SCG  
( transparent acrylic paint )

## Table of Frame Spacing for Maximum Load

Load Compliance ( Kg./Sq.m. )	Frame spacing (cm.)				
	40 x 40	40 x 60	40 x 120	60 x 60	60 x 120
20 mm.	960	650	550	410	230
24 mm.	1440	950	790	600	330

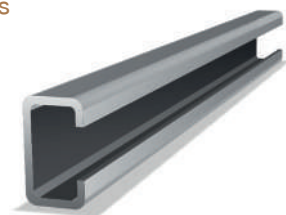
- Note**
- o The load in the table is calculated from installation where the load is equally distributed and does not include concentrated force impact load or vibrations
  - o Do not use the charger in a high moisture or wet environment.
  - o The framing that supports the boards must be strong. The entire pieces must be installed and the framing must support the piece on all four sides.

## Metal frames in installation

Recommended structural steels are below : Structural steel for beams

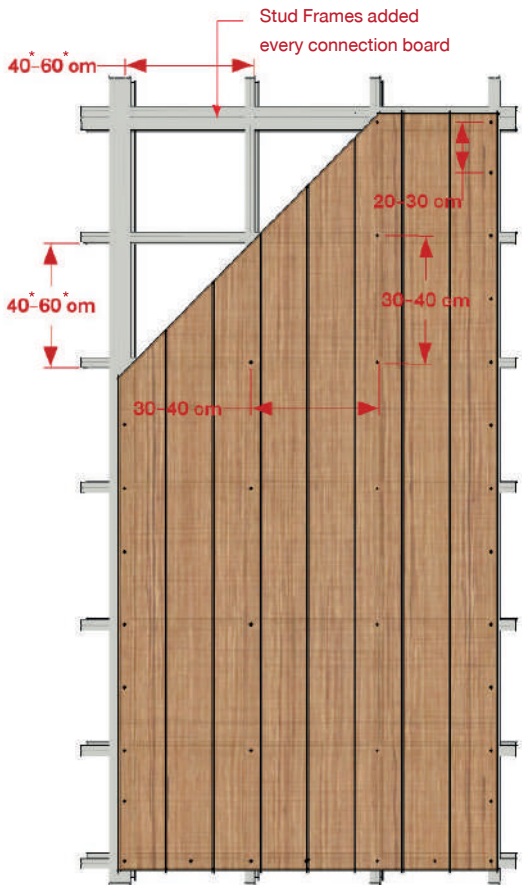


Box-like form with 100 x 50 mm.  
and 2.3 - 3.2 mm. thick



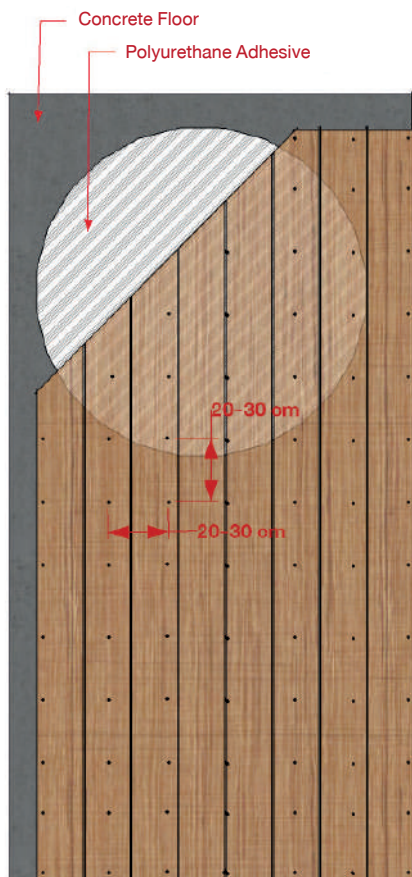
Structural steel for joist C-shaped form with  
100 x 50 x 20 mm. and 2.3-3.2 mm. thick

## Installation on metal structure



- Thickness** : 20 - 24 mm.
- Frames** : Put each Mega Floor board on frames with enough support for screws ( as the example )  
There must be frames supporting edges of each board.
- Installation** : For installation, Distance between boards is 3-5 mm. for interior and exterior. Gaps and holes must be filled up by polyurethane sealant. Distance between each screw on the edges is 20 - 30 cm. and in the middle 30 - 40 cm. but the distance screws-angle must be 7.5 cm, and screw-edge 3 cm.
- : Hide screw head with acrylic filler
  - : Clean with damp towel
  - : Varnish with primer color ( 1 layer )
  - : Paint with 100 % Flooring Fiber cement transparent acrylic paint for 2 - 3 layers to get timber-like surface

## Installation on Concrete Floor



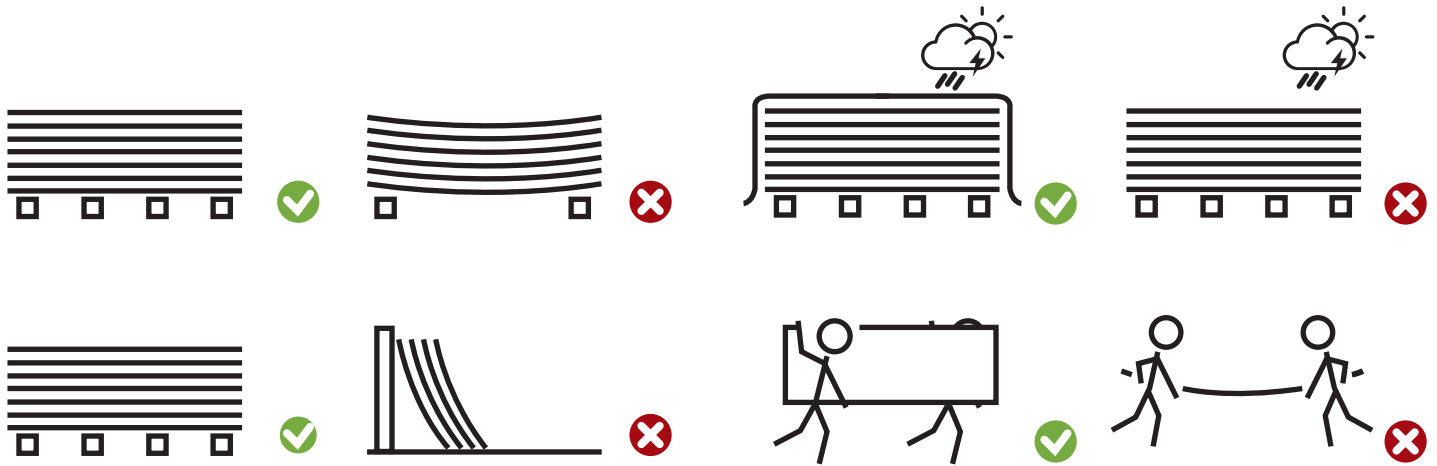
- Thickness** : 20 - 24 mm.
- Installation** : Clean carefully the surface ( neither dust nor greasiness )  
: Stick the board against concrete with cement adhesive. Layer should be 6 - 8 mm. thick.  
: Put board on cement every 200 mm. use concrete nail 2" along the board to joint board with concrete.  
Let the adhesive dry ( around 24 hours ).  
: Required gaps between boards at 3-5 mm. for internal & external use. Gaps and holes covered by polyurethane sealant  
: Hide screw head with acrylic filler  
: Varnish with Primer paint ( 1 layer )  
: Paint with 100 % transparent acrylics for 2 - 3 layers to get timber-like surface

## Recommendations for Storage

- Boards should be stored in shelter against humidity or well covered when they are kept outdoor. And the location should be accessible to forklift
- Supportive stands should be properly installed before putting boards on, in order to prevent board deformation. Each stand should be distanced at 60 cm. and there should be 4 supportive stands for 240 cm.

## Recommendations for Transportation

- Boards need to be laid flat and be effectively protected during transportation by waterproof covering
- Board should be handle horizontally by 3 - 4 persons



Available at leading construction stores  
 SCG Contact Center 02-586-2222  
 Email : [contact@scg.co.th](mailto:contact@scg.co.th), [www.scgbuildingmaterials.com](http://www.scgbuildingmaterials.com)