

RNT SMART CLAMP

RSC CATALOG_V.1



• ขอสงวนสิทธิ์ในการเปลี่ยนแปลง ปรับปรุงข้อมูลโดยไม่ต้องแจ้งให้ทราบล่วงหน้า
เพื่อประโยชน์และประสิทธิภาพสูงสุดของผลิตภัณฑ์เพื่อผู้บริโภค

สาขารามคำแหง (สำนักงานใหญ่)
647/3-6 ถนนรามคำแหง แขวงหัวหมาก เขตบางกะปิ
จังหวัดกรุงเทพฯ 10240
Tel: 02-735-0755 Fax: 02-735-0702
Email: ranotech@gmail.com
Website: www.ranotech.com
เปิดบริการ วันจันทร์ - เสาร์ เวลา 08.30 - 17.30 น.

สาขาสาธุการ
38/11-12 ถนนสาธุการ ตำบลสาธุการ อำเภอสาธุการ
จังหวัดปทุมธานี 12130
Tel: 02-531-3691 Fax: 02-531-3691
Email: ranotech@gmail.com
Website: www.ranotech.com
เปิดบริการ วันจันทร์ - ศุกร์ เวลา 08.30 - 17.30 น.

สาขาหาชัย
199/109 หมู่ 3 ตำบลหาชัย อำเภอเมืองสมุทรสาคร
จังหวัดสมุทรสาคร 74000
Tel: 034-440-810 Fax: 034-440-810
Email: ranotech@gmail.com
Website: www.ranotech.com
เปิดบริการ วันจันทร์ - ศุกร์ เวลา 08.30 - 17.30 น.

✉ ranotech@gmail.com
🌐 www.ranotech.com

www.ranotech.com



SMART CLAMP[®]

SMART CHOICE & SMART SOLUTION FOR CONNECT
AND REPAIR PIPE SYSTEM - RNT SMART CLAMP

SAVE MONEY AND TIME : 30%

GOOD CHOICE !

CERTIFICATES



ISO 9001 : 2008



KR



ABS



LR



BV



DNV



GL



RINA



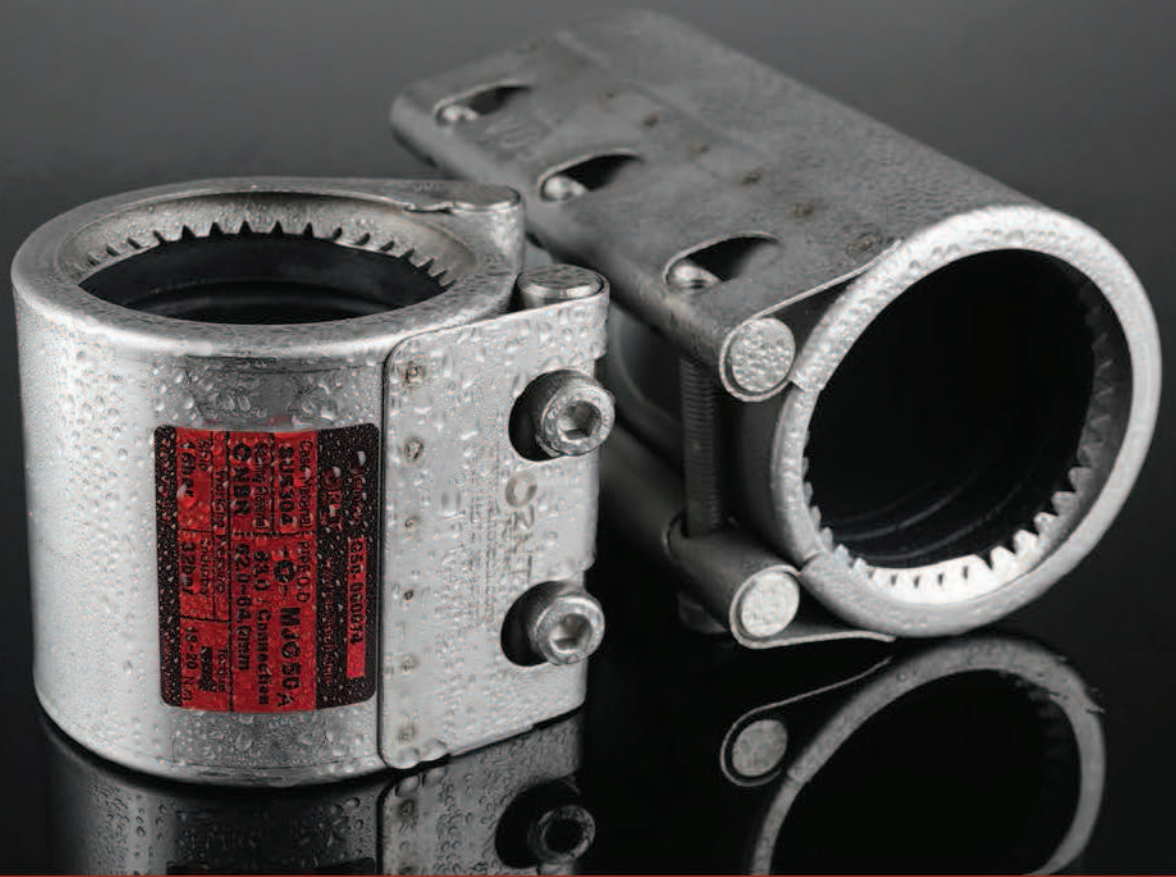
JWWA



FESC



CE MARK



CONTENTS

- 01 NAME OF EACH PART
 - 01 TYPES OF RUBBER GASKET
 - 01 CHARACTERISTICS OF PRODUCTS
- 02 PIPE COUPLING
 - 03 GRIP TYPE
 - 04 SLIP TYPE - LOCKS 2
- 05 PIPE REPAIR CLAMP
 - 06 HINGE TYPE
 - 07 MULTILOCKS TYPE
 - 08 ELBOW REPAIR CLAMP
 - 08 SOCKET REPAIR CLAMP
- 10 TEST DATA
- 12 APPLICATION FIELDS
- 14 APPLICATION EXAMPLES
- 16 PRODUCT SPECIFICATIONS
- 18 HOW TO CHOOSE...

RNT SMART CLAMP

SMART CHOICE & SMART SOLUTION
FOR CONNECT AND REPAIR PIPE SYSTEM



Model & Size : MJG (15A-350A)

CERTIFICATES





Name of each part.

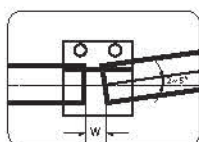
- | | |
|---------------|-------------------------------|
| 1. CASING | SUS 304/316 |
| 2. SLIDE | SUS 304/316 |
| 3. BOLT | SUS 304/316/SS41/SCM435 GALV |
| 4. BAR-NUT | SUS 303F/304/316/S45C GALV |
| 5. BAR-WASHER | SUS 303F/304/316/S45C GALV |
| 6. GRIP | SUS 301H/304H |
| 7. GASKET | EPDM/NBR/SILICONE/FKM (VITON) |

SUS : Stainless Steel

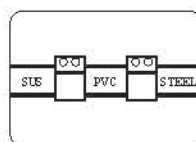
TYPES OF RUBBER GASKET

<p>EPDM [Ethylene Propylene Rubber]</p>	<p>- Aging, Ozone, Electric resistance - Normal temp. : -30~110°C - Use : hot & cold water, air, powder lines, some chemical lines (ammonium hydroxide, methyl alcohol, fatty acid, acetic, MEK, hydrogen brom, acetone lines, etc. pH2~11)</p>
<p>NBR [Nitrile Butadiene Rubber]</p>	<p>- Oil, Abrasion, Aging resistance - Normal temp.: -25~80°C - Use : oil, gas, water, hydro carbon lines [gasoline, oxygen, fuel oil, olive oil lines, etc. pH2~11]</p>
<p>SILICONE</p>	<p>- Heat, Weather resistance - Normal temp.: -70~200°C - Use : steam lines</p>
<p>FKM/FPM [Fluorocarbon Elastomer]</p>	<p>- Chemical, Medicine resistance - Normal temp.: -30~250°C - Use : chemical lines [toluene, sulfuric acid, hydrofluoric acid, benzene, heptane, aqua regia, kraft, lubricating oil lines, etc.]</p>

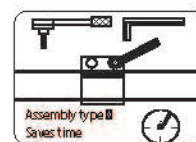
CHARACTERISTICS OF PRODUCTS



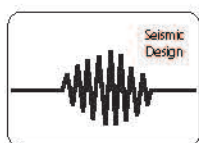
Absorbs bending and sag [deflection].



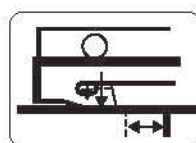
Connects pipes of different material.



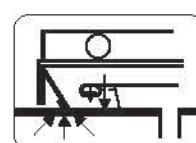
Just use a wrench to install.



Absorbs impact, vibration and noise.



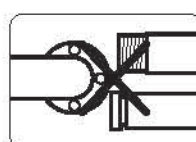
Slip type [Flexible type] absorbs expansion.



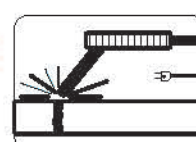
Grip type resists against axial movement.



Saves work space.



No treatment at pipe ends required.



Secure against fire.

Grip Type



MJG



MJGL

Slip Type
(Flexible Type)



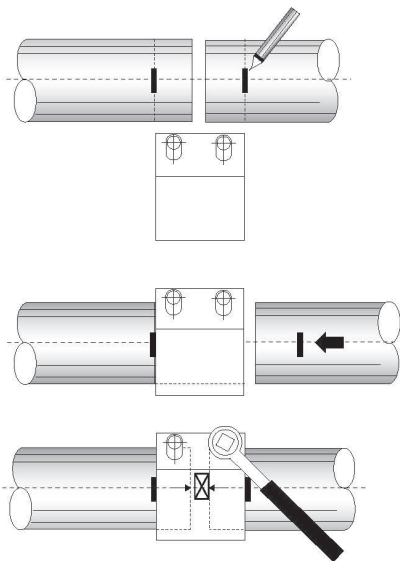
MJD



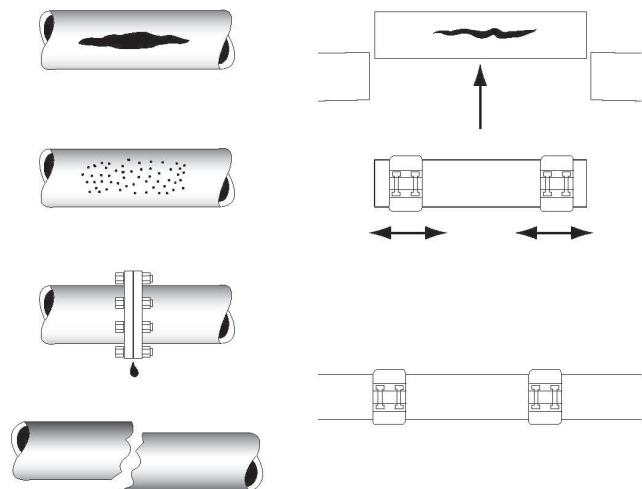
MJDL

INSTALLATION METHOD

For connecting straight pipes.
[MJG, MJGL, MJD, MJDL]



For replacing straight pipes partially.
[MJG, MJD]



GRIP TYPE



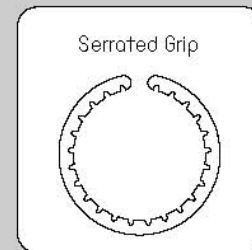
Model&Size : MJG (15A-350A)



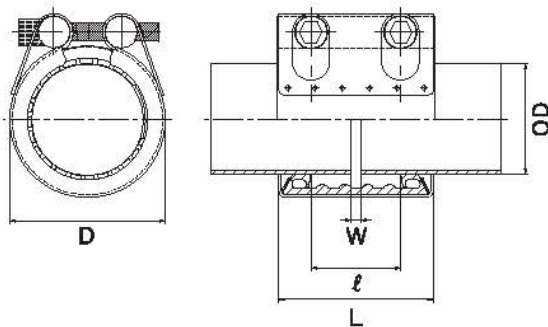
Model&Size : MJGL (15A-300A)

The Grip Type Coupling has double grip at each end which fixes pipes and makes them not move or separate from each other. No treatment of pipe ends required. Coupling method shortens the installation time and saves work space. Coupling absorbs impact, vibration, bending, and noise. This is the up-to-date method and can replace the traditional ones such as welding, flange, union, and groove joint method.

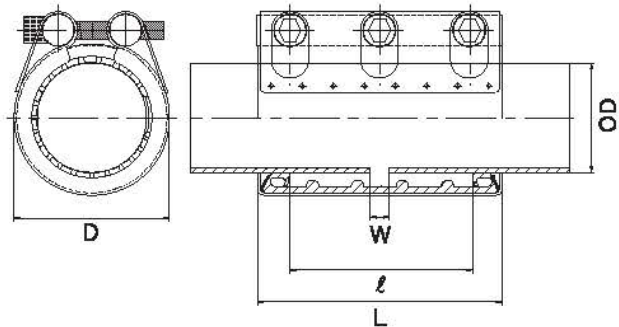
Gap between pipe (W)		Angular deflection	
15A-65A	0-8 mm.	15A-50A	5°
80A-	0-15 mm.	65A-175A	4°
		200A-	2°



[MJG]



[MJGL]



SLIP TYPE (FLEXIBLE TYPE) - LOCKS 2

Slip Type (Flexible Type) - Multi Locks Couplings are composed of two separate slides with locks at each end. So, they have better tightening and wider range of allowable OD, and it is easy to install even at large diameter pipes. They are also used for new connection or partial replacement of a pipe.

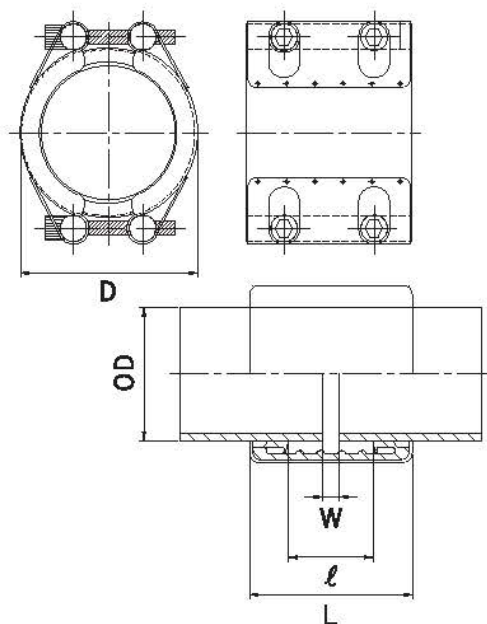


Model&Size : MJD (13A-2000A)

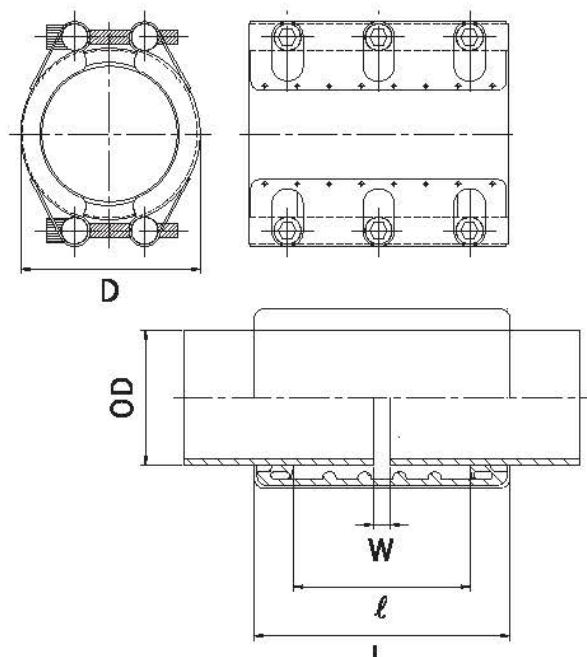


Model&Size : MJDL (15A-2000A)

(MJD)



(MJDL)



Hinge Type



MJH



MJHL



MJHT

Multi Locks Type



MJD



MJDL

Elbow Repair Clamp



MJER

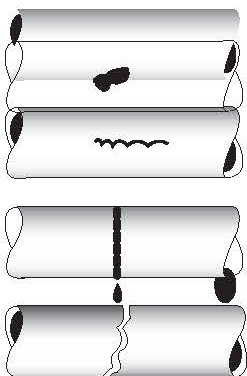
Socket Repair Clamp



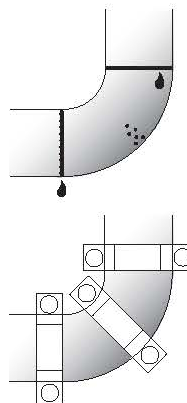
MJCX

INSTALLATION METHOD

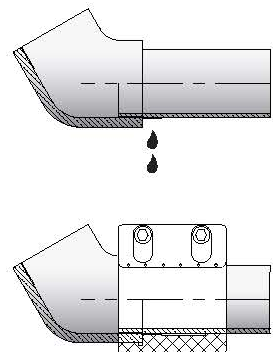
For repair straight pipes.
(MJD, MJDL, MJH, MJHL, MJHT)



For repairing elbow
(MJER)



For repairing socket
(MJCX)



HINGE TYPE

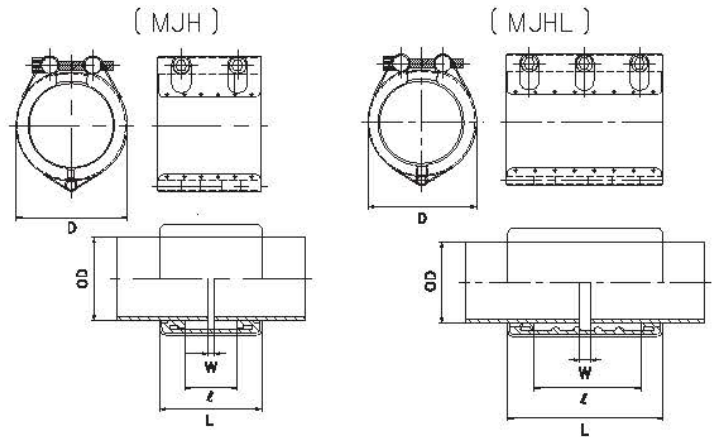
Hinge Type Clamp has a hinge at the opposite side of the lock, and this enables you to open the joint and cover the damaged part of a pipe easily and quickly.



Model&Size : MJH (15A-600A)



Model&Size : MJHL (25A-300A)

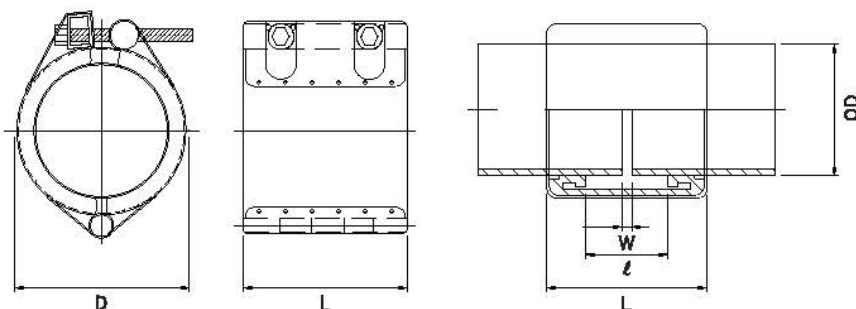


This is the upgraded version of MJH. You can lock up the clamp by simply swiveling the bolt one end of which is already inserted into the bar nut, fitting into the bar washer, and bolting up. The process is very simple and shortens working time more than 30% compared to MJH.



Model&Size : MJHT (20A-600A)

[MJHT]



MULTILOCKS TYPE (LOCKS 2)

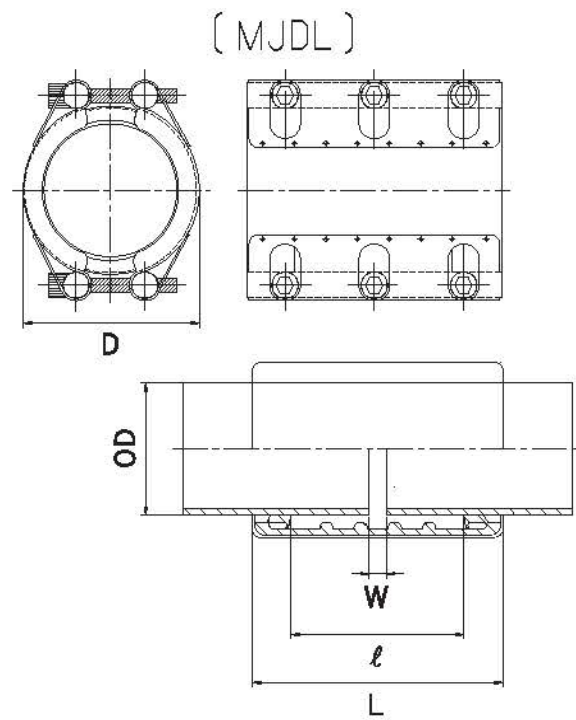
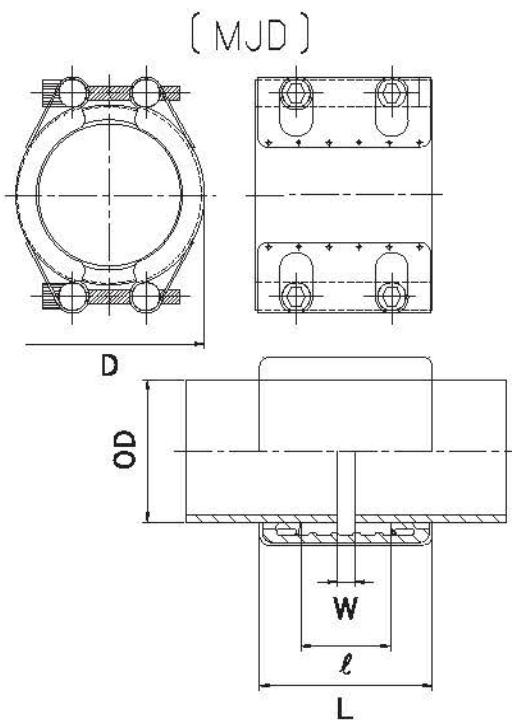
These clamps are composed of two separate slides with locks at each end. So, they have better tightening and wider range of allowable OD, and it is easy to install even at large diameter pipes. They are also used for new connection or partial replacement of a pipe.



Model&Size : MJD (13A-2000A)



Model&Size : MJDL (15A-2000A)



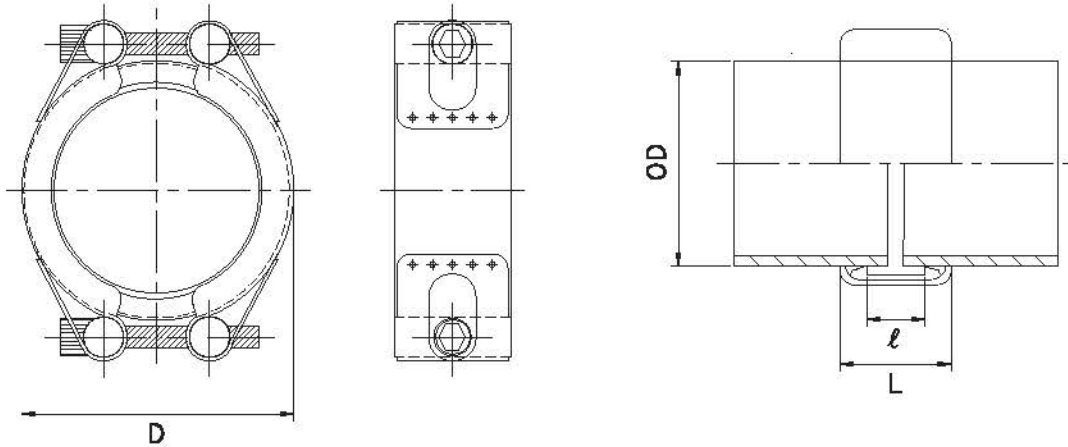
ELBOW REPAIR CLAMP

Elbow Repair Clamp is useful for repairing damaged or leaking area on elbow, or covering welded part to protect it. This is top-bottom separated type, like MJD.



Model&Size : MJER (13A-500A)

(MJER)



SOCKET REPAIR CLAMP

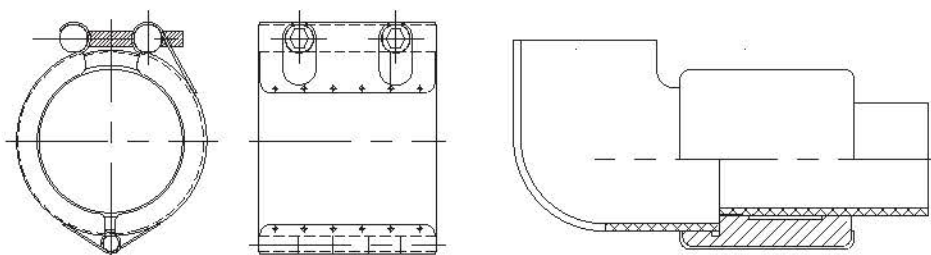
The connecting part of socket method is half thick compared to the other part of a pipe. So, it is weak against vibration or impact. MJCX protects the weak part and also covers damaged one.



Model&Size : MJCX (20A-50A)

(MJCX)

Pipe ND	Pipe OD	Socket OD	Max Working Pressure (bar)
20A	27.2 mm.	34.3 mm.	10
25A	34.0 mm.	42.3 mm.	
32A	42.7 mm.	51.0 mm.	
40A	48.6 mm.	57.2 mm.	
50A	60.5 mm.	70.4mm.	



RNT SMART CLAMP

SMART CHOICE & SMART SOLUTION
FOR CONNECT AND REPAIR PIPE SYSTEM



Item No. **H50-0000092**
 www.ranotech.com
 Case Material **SUS304** PIPE O.D. **- O - MJH 50 A**
 Sealing Material **O NBR** **63.0 / Repair**
62.0-64.0mm
 Working Pressure **18bar** Ship **18bar** Industry **32bar** Torque **12-15 N.m**

Model & Size : MJH (15A-600A)

CERTIFICATES



Test

Tightness & Burst Pressure Test

- Test Method : KS B 1547 ('96), KS M 6609 ('94), DNV ('10), BV ('11), RINA ('08)
- Tightness Test pressure = working pressure x1.5 (bar)
- Burst Pressure Test pressure = working pressure x4 (bar)
- Sample & Condition
MP JOINT 15A-500A (MJG/ MJS/ MJR/ MJH/ MJD/ MJGL/ MJL/ MJRL/ MJHL/ MJDL)

(bar)

ND	Tightness Test	Burst Test	ND	Tightness Test	Burst Test	ND	Tightness Test	Burst Test	
15A	24	64	65A	21	56	250A	12	32	
20A			80A			300A	10.5	28	
25A			100A			350A			
32A			125A			400A		9	24
40A			150A			48	450A	7.5	20
50A			200A			12	500A		

Sample & Condition

(bar)

ND	Tightness Test	Burst Test	ND	Tightness Test	Burst Test
MJGF 65A	24	64	MJSF 65A	24	64
125A	24	64	125A	24	64
250A	15	40	250A	15	40
300A	15	40	500A	10.5	28

Result : No leakage

FIRE RESISTANCE TEST - with Fire-Resistant Cover (FRC)

- Test Method : ISO 19921/19922, RINA ('08) (circulating/800°C/30min)

Sample	ND	Working Pressure	Hyd. Test
MJG	20A	16 bar	32 bar
	250A	8 bar	16 bar
MJGL	50A	16 bar	32 bar
	125A	14 bar	28 bar
MJS	15A	16 bar	32 bar
	100A	14 bar	28 bar
MJL	40A	16 bar	32 bar
	250A	8 bar	16 bar

Test Method: ISO 19921/19922, DNV ('10) (circulating/800°C/30min)

Sample	ND	Working Pressure	Hyd. Test
MJGF	65A	16 bar	24 bar
	125A	16 bar	24 bar
	250A	10 bar	15 bar
	300A	10 bar	15 bar
MJSF	65A	16 bar	24 bar
	125A	16 bar	24 bar
	250A	10 bar	15 bar
	300A	10 bar	15 bar

Result : No leakage

VIBRATION & FATIGUE TEST

- Test Method: DNV ('10)
- Section 1 : no. of cycles 3x10⁶, amplitude ±0.06mm, frequency 100Hz., working pressure
- Section 2 : no. of cycles 3x10⁶, amplitude ±0.5mm, frequency 45Hz., working pressure
- Section 3 : no. of cycles 3x10⁶, amplitude ±1.5mm, frequency 10Hz., working pressure
- Sample : MJG 20A, 50A / MJGF 65A, 125A, 250A, 300A
- Result : No leakage

Vacuum Test

- Test Method : DNV
- Vacuum 300mbar
- Leakage Test pressure = working pressure x1.5 (bar)
- Sample : MJG 50A, 150A, 200A / MJGF 65A, 125A, 250A, 300A / MJSF 65A, 125A, 250A, 500A
- Result : No leakage

PRESSURE PULSATION TEST

- Method : DNV ('10)
- Pressure change : 0 → impulse pressure (working pressure x1.5) → working pressure → 0 (bar)
- 500,000cycle, 30cycle/min
- Sample : MJG 20A, 50A, 80A / MJGF 65A, 125A, 250A, 300A

Model	ND	Test Condition	30cycle/min
MJG	20A	0 → 24 → 16 → 0 bar /cycle	500,000 cycle
	50A	0 → 24 → 16 → 0 bar /cycle	
	80A	0 → 21 → 14 → 0 bar /cycle	
MJGF	65A	0 → 24 → 16 → 0 bar /cycle	
	125A	0 → 24 → 16 → 0 bar /cycle	
	250A	0 → 15 → 10 → 0 bar /cycle	
	300A	0 → 15 → 10 → 0 bar /cycle	

Result : No leakage

Repeated Assembly Test

- Test Method : ('10)
- Repeated Assembly : 10 times
- Tightness Test pressure = working pressure x1.5 (bar)
- Sample : MJG 50A, 150A, 200A / MJGF 65A, 125A, 250A, 300A
- Result : No leakage

BREAK TEST

- Test Method : KS B 0802 ('98)
- Sample : Coupling 50A

Test Item	Test Result	
	SUS Bolt	SC Bolt
Break Load	458N	433N
Break Section	Spot weld	Bolt

PULL-OUT TEST

- Method : KS B 0802 ('98), IACS ('02)

(kN)

Sample	40A	50A	125A	150A	250A	300A
MJG	45.6	64.9	105.5	105.8	119.3	130.7

Result : No leakage

Salt Spray Test

- Test Method : KS D 9502 ('97)
- Sample : MJS 100A

Duration	Result
72h	6000

BOLT TENSILE LOAD TEST

Test Method	KS B 0802 ('08)				KS B 0233 ('96)	
Bolt Material	SUS 304 (A2-70)				SUS 304 (A2-40)	
Bolt Size	M6	M8	M12	M14	M12	M14
Tensile Load (N)	11,445	28,795	59,273	81,310	53,672	71,236

STAINLESS STEEL PLATE ANALYSIS

- Test Method/Item : KS D 3698 / SUS 304

Component	C	Si	Mn	P	S	Cr	Ni
Content (%)	0.0576	0.396	1.012	0.0315	0.0059	18.11	8.06

- Test Method / Item : ASTM A 240M / SUS 316

Component	C	Si	Mn	P	S	Cr	Ni	Cu	Mo	N
Content (%)	0.013	0.592	1.017	0.0299	0.0019	16.14	10.04	0.265	2.05	0.0091

RUBBER PLATE TEST

Rubber Plate Test Analysis

- Test Method : KS M 6518 ('06)

EPDM

Test Item	Result	
Hardness [HS]	57	
Tensile Strength [TS] (MPa)	11.6	
Elongation [E] (%)	670	
Heat Aging Test (110°C ±2°C, 96h)	HS change	4
	TS change (%)	-3.2
	E change (%)	-27.6
Compression Set (%) (110°C ±2°C, 22h)	24	

NBR

Test Item	Result	
Hardness [HS]	62	
Tensile Strength [TS] (MPa)	13.1	
Elongation [E] (%)	500	
Heat Aging Test (80°C ±1°C, 96h)	HS change	1
	TS change (%)	-2.4
	E change (%)	-16.7
Compression Set (%) (80°C ±1°C, 22h)	20	
Immersion Test (No.3 oil, 80°C ±1°C, 96h)	HS change	-1
	TS change (%)	4.6
	E change (%)	-8.6
	Volume change (%)	-0.3

SILICONE

Test Item	Result	
Hardness [HS]	55	
Tensile Strength [TS] (MPa)	6.6	
Elongation [E] (%)	370	
Heat Aging Test (150°C ±2°C, 96h)	HS change	2
	TS change (%)	-2.0
	E change (%)	-6.7
Compression Set (%) (150°C ±2°C, 22h)	19	

FKM (VITON)

Test Item	Result	
Hardness [HS]	71	
Tensile Strength [TS] (MPa)	11.1	
Elongation [E] (%)	310	
Heat Aging Test (230°C ±2°C, 24h)	HS change	0
	TS change (%)	21.4
	E change (%)	-14.0
Compression Set (%) (175°C ±2°C, 22h)	15	

1. Engineering Industry :

irrigation, groundwater supplies, thermal & hydro power stations, drainage of reclaimed land, aqueducts, flood relief schemes, swimming pools, public baths, split points of lake & river, sea outfalls, aquariums, tunnel works, sewerage, sewage treatment plants, pumping stations, service reservoirs, distribution systems, clarification & filtration plants, purification plants, desalination plants, water storage towers, waste disposal sites, distillation plants, etc.

2. Beverages & Food Processing Industry

compressed air lines, water supply lines, process lines, etc.

3. Building & Construction Industry

4. Cement Industry :

slurry lines, pneumatic conveying lines, etc.

5. Fertilizer, Chemical, and Plastic Industry :

caustic, compressed air, acid, nitrogen decomposition, latex, distillation, steam condensate return, cooling water, salt water, waste, outlet, bleach, phosphoric acid lines, etc.

6. Gas Industry :

distribution & service lines, tank equipment, etc.

7. Heating & Air Conditioning Industry :

district heating lines (outfit of double pipe systems), pollution control lines, chilled water lines, steam condensate return lines, cooling water tower lines, etc.

8. Mechanical Engineering Industry :

water supply lines, gas lines, compressed air lines, lines for air conditioning and refrigeration, mixing equipment, cyclones, cable protecting tubes, pneumatic conveying lines, wet solid conveying lines, etc.

9. Metallurgical Industry :

steel mills, aluminum plants, zinc smelters, sand slurry lines at foundry, dilute acid solution lines, mine waste lines, waste treatment systems, plating dissolution lines, sulphuric acid lines, hydrochloric acid lines, chromic acid lines, waste acid line, etc. (for acids and bleaches, please refer to our chemical resistance list)

10. Mining Industry :

waste water lines, filtering lines, dilute acid line, mine tailings conveying lines, fly ash lines, vent lines, etc.

11. Chemistry, Oil, and Petrochemical Industry :

fire protective equipment at refineries and oil facilities, seawater lines, effluent lines, waste acid lines, production lines, oil storage tanks, induction pipes at underground water, gasoline storage lines, lines at marine facilities, connecting device of oil equipment, air inflow lines, vacuum lines, etc.

12. Power Generating Industry :

steam condensate return lines, waste water and water treatment lines, boiler make-up water lines, cooling water lines, vent lines, etc.

13. Pulp and Paper Industry and Printing Industry :

air lines to control panels, steam condensate return lines, sulphuric acid lines for pH control, alum lines, hydrochloric acid lines for corrosion proof operations, pneumatic conveying lines, etc.

14. Shipbuilding & Ship Repairing Industry

- Flammable fluids (Flash point < 60°)
 - Cargo oil, Crude oil washing, Vent
- inert gas :
 - Main, Distributions, Water seal effluent, Scrubber effluent
- Flammable fluids (Flash point < 60°)
 - Cargo oil, Fuel oil, Lubrication oil, Hydraulic oil, Thermal oil
- Sea water :
 - Bilge, Ballast, Cooling water, Fire main and water spray, Foam, Sprinkler, Tank cleaning, Non-essential
- Fresh water :
 - Cooling water system, Condensate return, Non-essential system
- Sanitary / Drains / Scuppers :
 - Deck drains(internal), Sanitary drains
- Sounding / Vent :
 - Water tanks / Dry spaces, Oil tanks (Flash point > 60°)
- Miscellaneous :
 - Service air (non-essential), Brine

RNT SMART CLAMP

SMART CHOICE & SMART SOLUTION
FOR CONNECT AND REPAIR PIPE SYSTEM



Model&Size : MJER (13A-500A)

CERTIFICATES

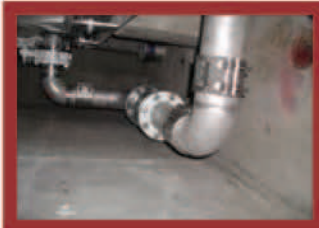
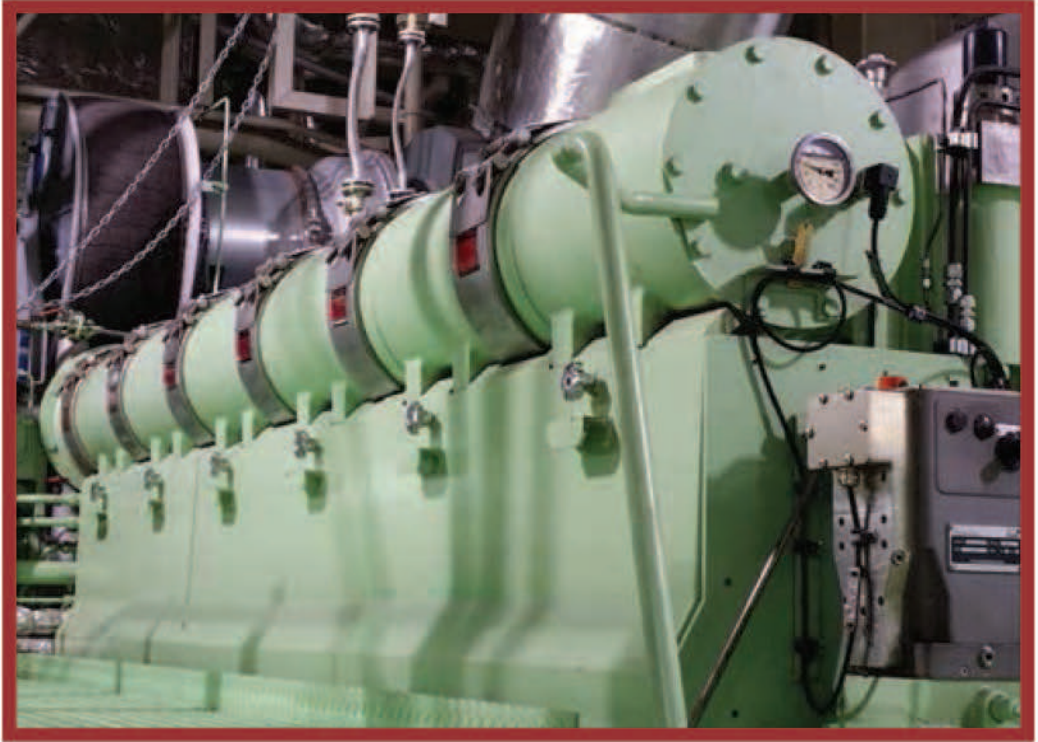


SAVE MONEY AND TIME



RNT
SMART CLAMP





SMART CHOICE



SMART SOLUTION

FOR CONNECT AND
REPAIR PIPE SYSTEM



ITEM NO.	Pipe ND	Pipe OD (mm.)	Max Working Pressure (bar)		Coupling Range (mm.)			Length of Coupling (L) (mm)	
			Ship	Industry	MJG / MJGL	MJH/MJHL/MJHT	MJD/MJDL/MJER	Standard Type	Long Type
1	13A	15.8	16	32	-	-	15.3-17.0	60	100
2	15A	20.0	16	32	19.5-20.5	19.5-20.5	19.5-21.3	60	100
3		21.7	16	32	21.2-22.2	21.0-22.0	21.0-23.0	60	100
4	20A	25.0	16	32	24.5-25.5	24.0-26.0	24.0-26.5	60	100
5		27.2	16	32	26.7-27.7	26.0-28.0	26.0-28.5	60	100
6		28.2	16	32	27.5-29.0	26.4-29.0	26.4-29.5	60	100
7	25A	30.0	16	32	29.5-30.5	29.0-31.0	29.0-31.5	60	100
8		32.0	16	32	31.5-32.5	31.0-33.0	31.0-33.5	60	100
9		34.0	16	32	33.0-34.6	33.0-35.0	33.0-35.5	60	100
10	32A	38.0	16	32	37.5-38.5	37.0-39.0	37.0-39.5	60	100
11		40.0	16	32	39.5-41.5	39.9-41.3	39.5-41.8	60	100
12		42.7	16	32	41.9-43.0	42.0-44.0	42.0-44.5	60	100
13		44.5	16	32	44.0-45.5	44.0-46.0	44.0-46.5	60	100
14	40A	48.6	16	32	47.8-49.0	47.5-49.5	47.5-50.5	60	100
15		50.8	16	32	49.5-51.5	49.2-51.5	49.2-51.5	80	150
16	50A	54.0	16	32	53.4-54.6	53.0-55.0	53.0-56.0	80	150
17		57.0	16	32	56.4-57.6	56.0-58.0	56.0-59.0	80	150
18		60.5	16	32	59.0-61.5	59.0-61.5	59.0-62.0	80	150
19		63.0	16	32	62.4-63.6	62.0-64.0	62.0-65.0	80	150
20	65A	66.7	14	28	65.2-67.3	65.4-68.3	65.4-69.0	80	150
21		69.0	14	28	68.0-70.1	68.5-71.0	68.0-72.0	80	150
22		73.0	14	28	71.5-74.1	72.5-75.5	72.5-76.5	110	200
23		76.3	14	28	75.0-77.2	75.0-78.0	75.0-79.0	110	200
24	80A	79.9	14	28	78.8-81.2	78.8-82.0	78.8-83.0	110	200
25		84.0	14	28	83.0-84.9	82.5-85.5	82.5-86.0	110	200
26		89.1	14	28	87.8-91.1	88.0-91.0	88.0-92.0	110	200
27	90A	101.6	14	28	100.4-102.6	100.0-103.0	100.0-104.0	110	200
28	100A	104.0	14	28	103.0-104.8	102.0-105.0	102.0-106.0	110	200
29		106.3	14	28	105.0-107.4	105.0-107.5	105.0-108.5	110	200
30		108.0	14	28	106.5-108.5	106.0-109.0	106.0-110.0	110	200
31		114.3	14	28	113.2-115.4	113.0-116.0	113.0-118.0	110	200
32	125A	127.0	14	28	125.6-128.4	125.0-129.0	125.0-129.5	111	201
33		129.0	14	28	127.5-130.0	127.5-130.0	127.5-131.0	111	201
34		133.0	14	28	131.6-134.4	131.6-134.4	131.0-135.5	111	201
35		139.8	14	28	137.7-140.9	138.0-142.0	138.0-142.5	111	201
36		141.3	14	28	139.7-142.2	139.5-143.5	139.5-144.0	111	201
37	150A	154.0	12	24	151.5-155.0	151.5-155.5	151.5-156.0	111	201
38		159.0	12	24	156.5-168.0	156.0-160.0	156.0-161.0	111	201
39		165.2	12	24	163.3-166.7	164.0-167.0	164.0-168.5	111	201
40		168.3	12	24	166.0-170.0	166.0-170.0	166.0-170.5	111	201

ITEM NO.	Pipe ND	Pipe OD (mm.)	Max Working Pressure (bar)		Coupling Range (mm.)			Length of Coupling (L) (mm)	
			Ship	Industry	MJG / MJGL	MJH/MJHL/MJHT	MJD/MJDL/MJER	Standard Type	Long Type
41	175A	180.0	10	20	178.0-182.0	178.0-182.0	178.0-183.0	111	201
42	200A	200.0	8	16	198.2-201.5	198.0-203.0	198.0-203.5	150	250
43		204.0	8	16	202.7-206.7	202.0-206.0	202.0-206.5	150	250
44		216.3	8	16	214.5-218.3	214.0-218.5	214.0-219.0	150	250
45		219.1	8	16	217.0-221.0	216.5-221.5	216.5-222.0	150	250
46	250A	254.0	8	16	251.4-256.6	251.0-257.0	251.0-257.0	150	250
47		267.4	8	16	264.8-270.0	262.0-269.0	262.0-270.0	150	250
48		273.1	8	16	270.4-275.6	270.0-276.0	270.0-277.0	150	250
49	300A	304.0	7	14	301.5-306.6	301.5-308.0	301.5-309.0	150	250
50		318.5	7	14	316.0-322.0	316.0-322.5	316.0-323.0	150	250
51		323.9	7	14	321.0-327.4	322.0-328.0	322.0-329.0	150	250
52	350 A	355.6	7	14	352.0-360.0	352.0-359.5	352.0-361.0	150	250
53	400A	406.4	6	12	-	402.0-410.0	402.0-411.0	150	250
54	450A	457.2	6	12	-	453.0-460.0	453.0-462.0	150	250
55	500A	508.0	5	10	-	504.0-512.0	504.0-513.0	150	250
56	550A	558.8	4.6	9.2	-	555.0-563.0	554.0-564.0	150	250
57	600A	609.6	4.2	8.4	-	605.0-614.0	605.0-615.0	150	250
58	650A	660.4	4	8	-	-	654.0-666.0	150	250
59	700A	711.2	3.7	7.4	-	-	705.0-717.0	150	250
60	750A	762.0	3.6	7.2	-	-	756.0-768.0	150	250
61	800A	812.8	3.4	6.8	-	-	806.0-818.0	150	250
62	850A	863.6	3.2	6.4	-	-	857.0-869.0	150	250
63	900A	914.4	3	6	-	-	908.0-920.0	150	250
64	1000A	1016.0	2.7	5.4	-	-	1010.0-1022.0	150	250
65	1100A	1117.6	2.5	5	-	-	1111.0-1123.0	150	250
66	1200A	1219.2	2.3	4.6	-	-	1213.0-1225.0	150	250
67	1350A	1371.2	2	4	-	-	1365.0-1377.0	150	250
68	1500A	1524.0	1.8	3.6	-	-	1518.0-1530.0	150	250
69	1650A	1676.4	1.7	3.4	-	-	1672.0-1682.0	150	250
70	1800A	1828.8	1.5	3	-	-	1822.0-1834.0	150	250
71	1900A	1930.4	1.4	2.8	-	-	1924.0-1936.0	150	250
72	2000A	2032.0	1.4	2.8	-	-	2026.0-2038.0	150	250

Check the fluid, pressure, temperature, pipe OD, etc when you order

NOTE

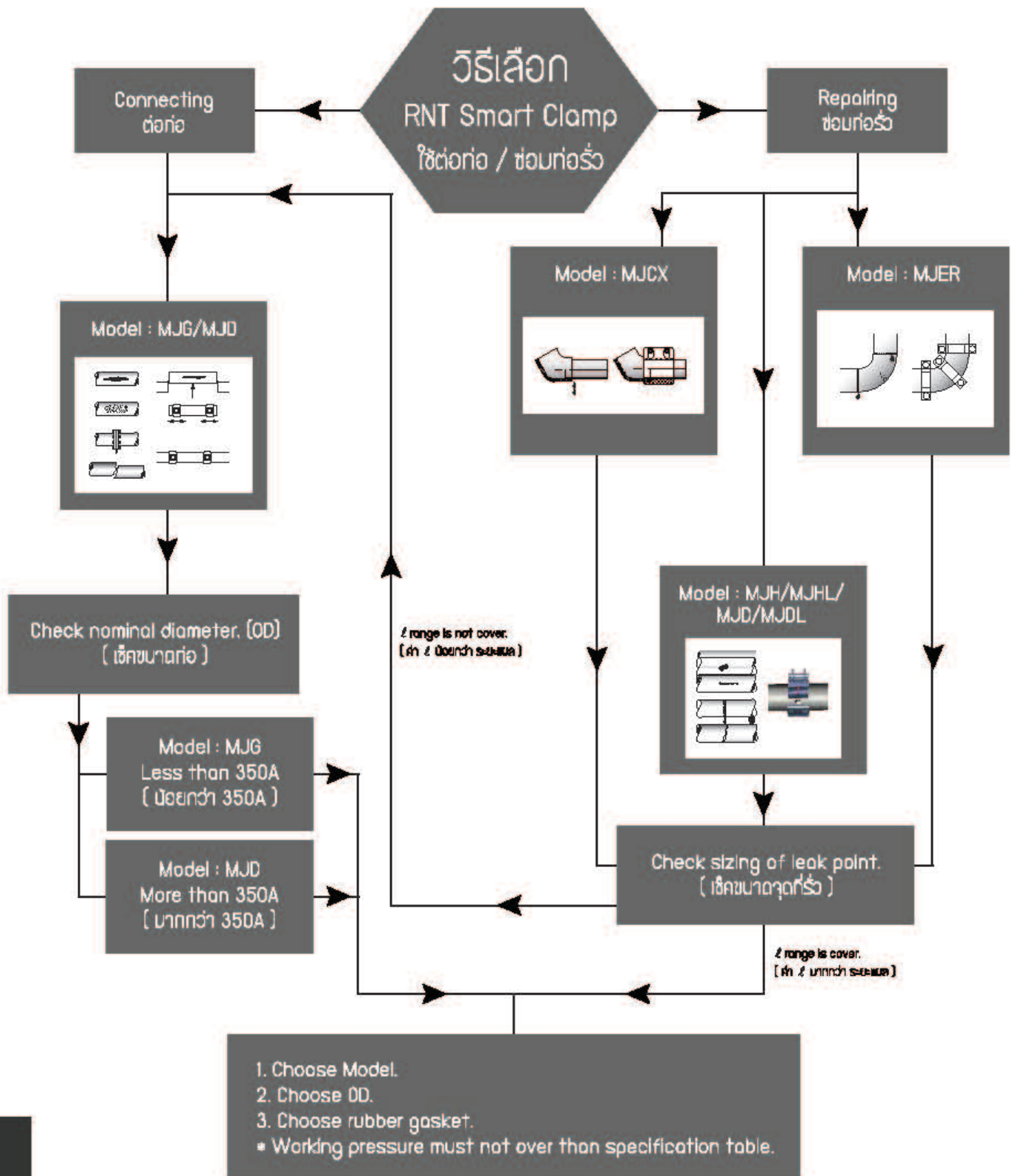
ND : Nominal Diameter of Pipe
 PD : Outer Diameter of Pipe (KS, JIS, DIN, ANSI, etc.)
 Refer to our website for further information.
 Burst Test pressure > design pressure for ship x ship safety factory (4.0)
 Burst Test pressure > design pressure for industry x industry safety factory (2.0)
 Other sizes may be producible on your request.

How to order	Example
Model + Pipe ND (OD) + Rubber Gasket + Quantity	MJG 100A (114.3 mm.) NBR 350 pcs.

สาขาการค้าแหง (สำนักงานใหญ่)
 647/3-6 ถนนรามคำแหง แขวงหิองหมาก เขตบางกะปิ จังหวัดกรุงเทพมหานคร 10240

Tel : 02-735-0755 Fax : 02-735-0702
 Email : ranotech@gmail.com Website : www.ranotech.com

The information contained herein may include inaccuracies or typographical errors.



RNT SMART CLAMP

SMART CHOICE & SMART SOLUTION
FOR CONNECT AND REPAIR PIPE SYSTEM



Model & Size : MJOL (15A-2000A)

CERTIFICATES

