

SIEMENS

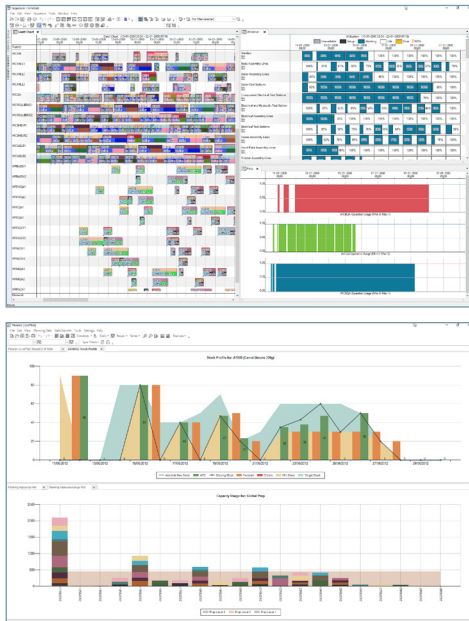
Ingenuity for life

Siemens Digital Industries Software

Opcenter APS

Advanced planning and scheduling

[siemens.com/mom](https://www.siemens.com/mom)



Global competition

The current trends in manufacturing are aimed at lowering inventory levels to reduce costs, while still being able to respond to shorter lead times and thereby satisfy customer demand. This forces companies to find ways to optimize production operations by reducing or eliminating nonvalue-added activities such as setup or waiting time. Highlighting potential problems allows action to be taken to balance demand and capacity.

Opcenter APS products have been developed to meet this need. They are used by small and mid-size companies and large corporations to help meet demands made by their customers and beat the increasingly global competition.

Due to the flexible data model and scheduling logic, Opcenter APS products can be set up to meet a company's planning and scheduling needs no matter what they are.

What about my existing software?

Opcenter APS products are designed to work alongside and facilitate, rather than replace, existing systems. They can be tightly integrated with enterprise resource planning (ERP), accounting and forecasting software, spreadsheets, manufacturing execution system (MES) and shop floor data collection (SFDC) systems.

Whether generating production plans that detail the task sequences for each resource by applying rules to load orders or producing long-term capacity plans, the products in the Opcenter APS range provide the interactive drag-and-drop environment that modern businesses need in order to react efficiently to unexpected changes in demand and capacity and thereby maximize on-time deliveries.

Visibility is key

You need to see the impact of your decisions. This cannot be achieved with more generalized tools, such as a spreadsheet. Using Opcenter APS helps you to visualize the current load, see the impact of unexpected events, ask what-if questions and compare alternatives before the decision is made.

Who uses Opcenter APS?

Many companies, ranging from small and medium-sized businesses to large corporations, employ Opcenter APS as part of their global supply chain solution. These companies are located around the world. The software's flexibility means that it can be used by companies in almost every sector of manufacturing, services and logistics.

- Automotive and aerospace
- Chemicals and pharmaceuticals
- Consumer packaged goods
- Electronics and electrical equipment
- Food and beverages
- Furniture and wood products
- Glass, ceramics and basic materials
- Metals and metal fabricated products
- Paper and packaging
- Printing and publishing
- Rubber and plastics
- Textiles and apparel
- Tooling and precision engineering

A complete family of solutions

Opcenter APS is not a single point solution. It represents a family of products that, although based on the same core code, have different levels of functionality and pricing so that you can select the system that satisfies both your needs and budget. Upgrading to another product as your needs change is simple and easy.

Products from the Opcenter APS range can be used for long-term strategic planning covering months and years ahead, medium-term tactical planning with a few weeks planning horizon and for detailed sequencing and scheduling.

How does Opcenter APS help lean initiatives?

Lean manufacturing is currently one of the industry buzzwords, and quite rightly so. Most companies are under pressure to reduce costs while producing more and achieve shorter delivery times. All this has to be accomplished without an accurate indication of future demand and with lower inventories.

Lean manufacturing represents a cultural change at all levels of a company. Its prime objective is to eliminate waste in whatever form it takes.

Independent international surveys, measuring on-time delivery performances and the improvement of throughput times, have proven that the most successful companies are those using lean scheduling software, such as Opcenter APS. By connecting such systems to their ERP and shop floor data collection, these companies are able to monitor the state of execution against plan.

Customization

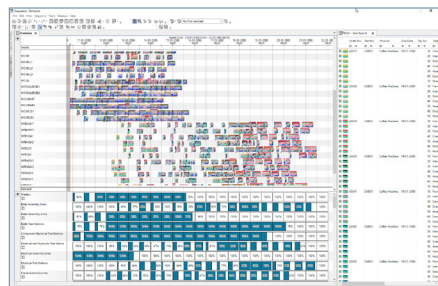
Opcenter APS is a highly customizable capacity planning and scheduling package. Fields and data tables in its Microsoft® SQL database can be added or changed. Unique sequencing rules can be created. Event-driven communication scripts can be installed for tight integration with other systems across multiple sites. Its flexibility is unparalleled.

Both the planning and scheduling products can be configured in a number of different ways. Often, users have a single master system that communicates with one or more Opcenter APS Viewers to share schedule information. Conversely, other companies employ multiple licenses across one or more departments, units or plants, with an automatic transfer of information from one system to another.

There is a network of more than 400 partners and solution providers around the world, providing software implementation and support for the Opcenter APS product range.

Opcenter capabilities

Opcenter is a holistic portfolio of manufacturing operations management (MOM) capabilities for advanced planning and scheduling, manufacturing execution, quality management, manufacturing intelligence and performance, and laboratory and formulation management. The portfolio serves major players in industries such as aerospace and defense, automotive, industrial machinery, heavy equipment, chemicals, consumer packaged goods, food and beverage, life sciences, electronics, semiconductor and medical devices.



Siemens Digital Industries Software
[siemens.com/software](https://www.siemens.com/software)

Americas +1 314 264 8499
Europe +44 (0) 1276 413200
Asia-Pacific +852 2230 3333