

Cable glands

Plastic cable gland

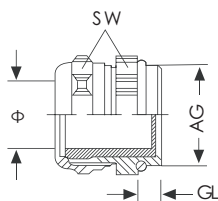
Material : Nickel- plate brass

Sealing: Nylon and NBR

Degree of protection: IP68(with O- searing)

Temperature range: Stat: - 40°C...+100°C

Dyn: - 20°C...+- 80°C



Unit: mm

Thread side	Clamping range(Φ)	Thread diameter(AG)	Wrench size(SW)	Thread lengthGL)	Designation	Order NO.
PG Thread						
PG7	3- 6.5	12.5	14	6	WNA- PG7(D3- 6.5)	06001131000
PG9	4- 8	15.2	17	6.5	WNA- PG9(D4- 8)	06001132000
PG11	5- 10	18.6	20	7	WNA- PG11(D5- 10)	06001133000
PG13.5	6- 12	20.4	22	7.5	WNA- PG13.5(D6- 12)	06001134000
PG16	8- 14	22.5	24	7	WNA- PG16(8- 14)	06001135000
PG21	13- 18	28.3	30	8	WNA- PG21(D13- 18)	06001136000
PG29	18- 25	37.0	40	9	WNA- PG29(D18- 25)	06001137000
PG36	22- 32	47.0	50	12	WNA- PG36(D22- 32)	06001138000
PG42	31- 38	54.0	57	12	WNA- PG42(D31- 38)	06001139000
PG48	37- 44	59.3	65	12	WNA- PG48(D37- 44)	06001140000
Metric Thread						
M12x1.5	3- 6.5	12	14	6	WNA- M12(D3- 6.5)	06001122000
M14x1.5	3- 6.5	14	14	6	WNA- M14(D3- 6.5)	06001102000
M16x1.5	4- 8	16	17	6.5	WNA- M16(D4- 8)	06001111000
M16x1.5	5- 10	16	20	6	WNA- M16(D5- 10)	06001111020
M18x1.5	5- 10	18	20	7	WNA- M18(D5- 10)	06001150000
M20x1.5	6- 12	20	22	8	WNA- M20(D6- 12)	06001112000
M20x1.5	8- 14	20	24	8	WNA- M20(D8- 14)	06001112010
M22x1.5	8- 14	22	24	7.5	WNA- M22(D8- 14)	06001151000
M25x1.5	9- 16	25	27	7.5	WNA- M25(D9- 16)	06001113010
M25x1.5	13- 18	25	30	7.5	WNA- M25(D13- 18)	06001113000
M32x1.5	15- 22	32	35	8.5	WNA- M32(D15- 22)	06001114020
M32x1.5	18- 25	32	40	8.5	WNA- M32(D18- 25)	06001114000
M40x1.5	18- 25	40	45	12	WNA- M40(D18- 25)	06001115030
M40x1.5	22- 32	40	50	12	WNA- M40(D22- 32)	06001115000
M50x1.5	22- 32	50	57	12	WNA- M50(D22- 32)	06001116020
M50x1.5	31- 38	50	57	12	WNA- M50(D31- 38)	06001116000
M63x1.5	37- 44	63	65	12	WNA- M63(D37- 44)	06001123000

Cable glands

Plastic cable gland

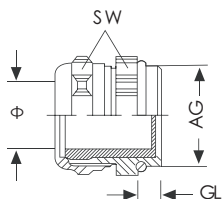
Material: Nylon

Serling: NBR

Degree of protection: IP68(with O- seading)

Temperature range: Stat: - 40°C...+100°C

Dyn: - 20°C...+80°C



Unit : mm

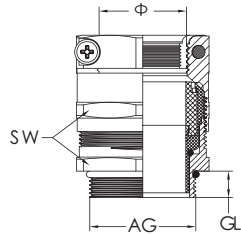
Thread side	Claping range(Φ)	Thread diameter(AG)	Wrench size(SW)	Thread length(GL)	Designation (Grey)	Order NO.	Designation (Black)	Order NO.
PG Thread								
PG7	3- 6.5	12.5	15	8.5	WNAP- PG7G	06001131100	WNAP- PG7B	06001131200
PG9	4- 8	15.2	19	8.0	WNAP- PG9G	06001132100	WNAP- PG9B	06001132200
PG11	5- 10	18.6	22	8.0	WNAP- PG11G	06001133100	WNAP- PG11B	06001133200
PG13.5	6- 12	20.4	23.5	10	WNAP- PG13.5G	06001134100	WNAP- PG13.5B	06001134200
PG16	8- 14	22.5	27	10	WNAP- PG16G	06001135100	WNAP- PG16B	06001135200
PG21	13- 18	28.3	33	11	WNAP- PG21G	06001136100	WNAP- PG21B	06001136200
PG29	18- 25	37.0	41.5	11	WNAP- PG29G	06001137100	WNAP- PG29B	06001137200
PG36	22- 32	47.0	51.5	13	WNAP- PG36G	06001138100	WNAP- PG36B	06001138200
PG42	31- 38	54.0	59	15	WNAP- PG42G	06001139100	WNAP- PG42B	06001139200
PG48	37- 44	59.3	65	14.0	WNAP- PG48G	06001404100	WNAP- PG48B	06001140200
Metric Thread								
M12x1.5	3- 6.5	12	15	8	WNAP- M12G	06001122100	WNAP- M12B	06001122200
M16x1.5	5- 10	16	19	8	WNAP- M16G	06001111100	WNAP- M16B	06001111200
M20x1.5	5- 10	20	23.5	10	WNAP- M20G	06001112110	WNAP- M20B	06001112210
M20x1.5	6- 12	20	23.5	10	WNAP- M20G(D6- 12)	06001112100	WNAP- M20B(D6- 12)	06001112200
M22x1.5	10- 14	22	27	10	WNAP- M22G	06001151100	WNAP- M22B	06001151200
M25x1.5	13- 18	25	33	11	WNAP- M25G	06001113100	WNAP- M25B	06001113200
M32x1.5	18- 25	32	42	11	WNAP- M32G	06001114100	WNAP- M32B	06001114200
M40x1.5	22- 32	40	51	12.5	WNAP- M40G	06001115100	WNAP- M40B	06001115200
M50x1.5	31- 38	50	58.5	15	WNAP- M50G	06001116100	WNAP- M50B	06001116200
M63x1.5	37- 44	63	65	14	WNAP- M63G	06001123100	WNAP- M63B	06001123200

Cable glands

Gland with external strain relief via clamping jaws

Material: Nickel-plate brass, Nylon

Degree of protection: IP68(with O-sealing)



Unit: mm

Thread side	Clamping range(Φ)	Thread diameter(AG)	Wrench size(SW)	Thread length(GL)	Designation	Order NO.
PG Thread						
PG9	4- 8	15.2	18	7	WNKS - PG9	06001132300
PG11	5- 10	18.6	22	7	WNKS - PG11	06001133300
PG13.5	6- 12	20.4	24	8	WNKS - PG13.5	06001134300
PG16	10- 14	22.5	27	7.5	WNKS - PG16	06001135300
PG21	13- 18	28.3	30	8	WNKS - PG21	06001136300
PG29	18- 25	37.0	40	9	WNKS - PG29	06001137300
PG36	22- 32	47.0	52	10	WNKS - PG36	06001138300
PG42	32- 38	54.0	59	11	WNKS - PG42	06001139300
Metric Thread						
M16x1.5	4- 8	16	18	7	WNKS - M16	06001111300
M16x1.5	5- 10	16	20	7	WNKS - M16(5- 10)	06001111310
M20x1.5	6- 12	20	22	7.5	WNKS - M20	06001112300
M25x1.5	10- 16	25	27	8	WNKS - M25	06001113300
M25x1.5	13- 18	25	30	8	WNKS - M25(13- 18)	06001113310
M32x1.5	16- 22	32	35	8.5	WNKS - M32	06001114010
M32x1.5	18- 25	32	40	8.5	WNKS - M32(18- 25)	06001114310
M40x1.5	22- 30	40	45	12	WNKS - M40	06001115010
M40x1.5	22- 32	40	50	12	WNKS - M40(22- 32)	06001115310
M50x1.5	30- 38	50	57	12	WNKS - M50	06001116010

Cable glands

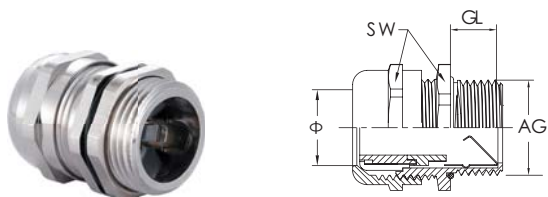
EMC Cable gland

Material : Nickel- plate brass

Sealing: Nylon and NBR

Degree of protection: IP68(with O- searing)

Temperature range: - 40°C...+100°C,short- term 120°C



Unit : mm

Thread side	Claping range(Φ)	Thread diameter(AG)	Wrench size(SW)	Thread length(GL)	Designation	Order NO.
PG Thread						
PG7	3- 6.5	12.5	14	5	WNAC- PG7(D3- 6.5)	06006131000
PG9	4- 8	15.2	18	6	WNAC- PG9(D4- 8)	06006132000
PG11	5- 10	18.6	20	6	WNAC- PG11(D5- 10)	06006133000
PG13.5	6- 12	20.4	24	7	WNAC- PG13.5(D6- 12)	06006134000
PG16	8- 14	22.5	24	7	WNAC- PG16(D8- 14)	06006135000
PG21	13- 18	28.3	30	8	WNAC- PG21(D13- 18)	06006136000
PG29	18- 25	37.0	40	8	WNAC- PG29(D18- 25)	06006137000
PG36	22- 32	47.0	50	9	WNAC- PG36(D22- 32)	06006138000
PG42	30- 38	54.0	60	9	WNAC- PG42(D30- 38)	06006139000
Metric Thread						
M12x1.5	3- 6.5	12	14	5	WNAC- M12(D3- 6.5)	06006122000
M16x1.5	4- 8	16	20	6	WNAC- M16(D4- 8)	06006111000
M18x1.5	5- 10	18	20	6	WNAC- M18(D5- 10)	06006150000
M20x1.5	6- 12	20	24	7	WNAC- M20(D6- 12)	06006112000
M24x1.5	8- 14	24	27	7	WNAC- M24(D8- 14)	06006119000
M25x1.5	10- 16	25	27	12	WNAC- M25(D10- 16)	06006113000
M25x1.5	13- 18	25	30	13	WNAC- M25(D13- 18)	06006113010
M30x1.5	13- 18	30	35	8	WNAC- M30(D13- 18)	06006118000
M32x1.5	15- 22	32	40	13	WNAC- M32(D15- 22)	06006114000
M32x1.5	18- 25	32	40	13	WNAC- M32(D18- 25)	06006114010
M36x1.5	18- 25	36	40	8	WNAC- M36(D18- 25)	06006121000
M40x1.5	21- 30	40	45	9	WNAC- M40(D21- 30)	06006115000
M40x1.5	22- 32	40	50	9	WNAC- M40(D22- 32)	06006115010
M48x1.5	22- 32	48	55	9	WNAC- M48(D22- 32)	06006127000
M50x1.5	30- 38	50	55	9	WNAC- M50(D30- 38)	06006116000
M56x1.5	30- 38	50	60	9	WNAC- M56(D30- 38)	06006120000
M63x1.5	37- 44	63	70	10	WNAC- M63(D37- 40)	06006117000

Cable glands

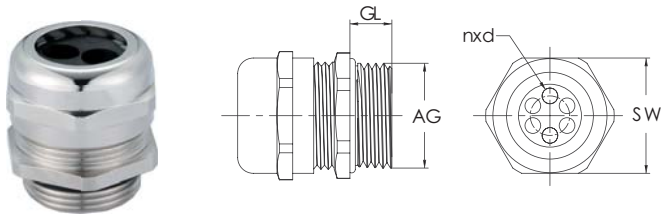
Metal cable gland with multi-core

Material : Nickel- plate brass

Sealing: Nylon and NBR

Degree of protection: IP65

Temperature range: - 40°C...+100°C,short- term 120°C



Unit: mm

Thread side	Claping range(nxd)	Thread diameter(AG)	Wrench size(SW)	Thread length(GL)	Designation	Order NO.
PG Thread						
PG9	2x3	19	17	6	WNAM- PG9/(2x3)	06001132410
PG21	4x6	33	30	7	WNAM- PG21/(4x6)	06001136400
PG21	3x7	33	30	7	WNAM- PG21/(3x7)	06001136410
PG21	2x6	33	30	9	WNAM- PG21/(2x6)	06001136430
PG21	2x7	33	30	8	WNAM- PG21/(2x7)	06001136440
PG21	2x8	33	30	7	WNAM- PG21/(2x8)	06001136420
PG29	4x9	44	40	8	WNAM- PG29/(4x9)	06001137410
PG36	5x9	55	50	9	WNAM- PG36/(5x9)	06001138400
Metric Thread						
M16x1.5	2x3	19	17	6	WNAM- M16/(2x3)	06001111410
M20x1.5	6x3	24	22	7	WNAM- M20/(6x3)	06001112420
M20x1.5	2x5	24	22	7	WNAM- M20/(2x5)	06001112440
M25x1.5	2x7	33	30	8	WNAM- M25/(2x7)	06001112450
M25x1.5	4x6	25	30	7	WNAM- M25/(4x6)	06001113410
M25x1.5	3x7	25	30	7	WNAM- M25/(3x7)	06001113400
M25x1.5	2x8	33	30	7	WNAM- M25/(2x8)	06001113420
M32x1.5	4x9	44	40	8	WNAM- M32/(4x9)	06001114410
M40x1.5	5x9	55	50	9	WNAM- M40/(5x9)	06001115400
M40x1.5	2x15	55	50	9	WNAM- M40/(2x15)	06001115430

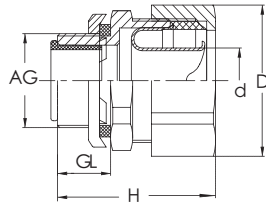
Cable glands

Outer thread tube connector

Material: Zinc alloy, Zinc plated or Chromium plated

Speedy: one end is connector to flexible tube, the other thread end connected to switch chest or equipment, the structure is compact, the surface is anti-rotten

Applications: Electromotor, Cable bridge frame, Electric engineering, Electric control etc.



Unit: mm

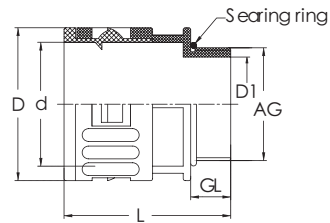
Thread side	Fits to tubing size(d)	Thread length(GL)	External diameter(D)	Height(GL)	Designation	Order NO.
PG Thread						
PG9	10	8.5	26	30	WNC- PG9/D10	06002132000
PG11	12	11.5	27.5	32	WNC- PG11/D12	06002133000
PG13.5	15	12.5	29.5	34	WNC- PG13.5/D15	06002134000
PG16	15	12	32	34	WNC- PG16/D15	06002135000
PG21	20	13	37.5	37	WNC- PG21/D20	06002136000
PG29	25	14.5	45.5	44	WNC- PG29/D25	06002137000
PG29	32	14	55	52	WNC- PG29/D32	06002137010
PG36	38	17	62	51	WNC- PG36/D38	06002138000
PG42	38	17	62	51	WNC- PG42/D38	06002139010
PG48	51	19	77.5	56	WNC- PG48/D51	06002140000
Metric Thread						
M16x1.5	8	8	26	28	WNC- M16/D8	06002111000
M16x1.5	10	8	26.5	30	WNC- M16/D10	06002111010
M20x1.5	12	10	27.5	32	WNC- M20/D12	06002112000
M24x1.5	15	12	32	34	WNC- M24/D15	06002113000
M30x2.0	20	13	37	37	WNC- M30/D20	06002114000
M36x2.0	25	14	44	44	WNC- M36/D25	06002115000

Cable glands

Quick tube connector

Material: Nylon 6

Temperature range: - 40°C...+120°C



Unit: mm

Thread side	Fits to tubing size(d)	Thread length(GL)	Bore(D1)	External diameter(D)	Total length(L)	Designation(Black)	Order NO.
PG Thread							
PG7	AD10.0	9.5	7.5	17.0	34.5	WNCP- PG7B	06002131200
PG9	AD13.0	9.5	11.5	20.0	34.5	WNCP- PG9B	06002132200
PG11	AD15.8	9.5	14.0	23.0	36.0	WNCP- PG11B	06002133200
PG13.5	AD18.5	11.0	16.0	26.0	39.0	WNCP- PG13.5B	06002134200
PG16	AD21.2	13.0	18.0	29.5	44.0	WNCP- PG16B	06002135200
PG21	AD28.5	13.0	23.5	37.0	47.0	WNCP- PG21B	06002136200
PG29	AD34.5	11.5	30.5	43.5	47.5	WNCP- PG29B	06002137200
PG36	AD42.5	13.5	40.0	51.0	52.0	WNCP- PG36B	06002138200
Metric Thread							
M12x1.5	AD10.0	10.0	8.0	17.0	34.5	WNCP- M12B	06002225200
M16x1.5	AD13.0	9.5	11.5	20.0	34.5	WNCP- M16B	06002111200
M18x1.5	AD15.8	9.5	14.0	23.0	36.0	WNCP- M18B	06002150200
M20x1.5	AD18.5	11.0	16.0	26.0	39.0	WNCP- M20B/AD18.5	06002112200
M20x1.5	AD21.2	13.0	15.0	29.5	44.0	WNCP- M20B/AD21.2	06002112210
M25x1.5	AD21.2	13.0	18.0	29.5	44.5	WNCP- M25B	06002113210
M25x1.5	AD28.5	13.0	20.5	37.0	47.0	WNCP- M25B/AD28.5	06002113200
M32x1.5	AD28.5	13.0	24.0	37.0	47.0	WNCP- M32B	06002114200
M40x1.5	AD34.5	11.0	30.0	43.5	48.0	WNCP- M40B	06002115200
M40x1.5	AD42.5	13.5	33.5	51.0	52.0	WNCP- M40B/AD42.5	06002115210
M50x1.5	AD54.5	13.5	42.5	63.5	53.5	WNCP- M50B/AD54.5	06002116201
M63x1.5	AD54.5	14.0	55.0	63.5	53.5	WNCP- M63B	06002117200

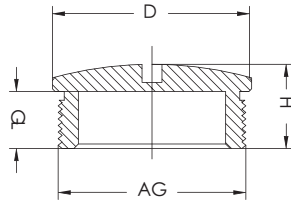
Cable glands

Nylon plug

Material : Nylon 6

Temperature range: - 40°C...+120°C

Degree of protection: IP68(with O- searing)



A

Unit: mm

Thread side	Thread length(GL)	Height(H)	Thread diameter(AG)	External dimension(D)	Designation(Grey)	Order NO.
PG Thread						
PG7	6.0	10.0	12.5	15.5	WNPP- PG7G	06005131100
PG9	6.0	10.0	15.2	18.5	WNPP- PG9G	06005132100
PG11	8.0	11.5	18.6	22.0	WNPP- PG11G	06005133100
PG13.5	8.0	11.5	20.4	24.0	WNPP- PG13.5G	06005134100
PG16	8.0	12.0	22.5	27.0	WNPP- PG16G	06005135100
PG21	7.5	12.5	28.3	33.0	WNPP- PG21G	06005136100
PG29	8.0	12.0	37.0	43.0	WNPP- PG29G	06005137100
PG36	10.5	14.0	47.0	55.0	WNPP- PG36G	06005138100
PG42	11.0	15.5	54.0	62.0	WNPP- PG42G	06005139100
PG48	12.0	16.0	59.3	68.5	WNPP- PG48G	06005140100
Metric Thread						
M12x1.5	6.0	10.0	12.0	15.0	WNPP- M12G	06005122100
M16x1.5	5.5	10.0	16.0	18.5	WNPP- M16G	06005111100
M20x1.5	8.0	12.5	20.0	25.0	WNPP- M20G	06005112100
M25x1.5	7.5	12.5	25.0	29.5	WNPP- M25G	06005113100
M32x1.5	8.0	13.5	32.0	39.0	WNPP- M32G	06005114100
M40x1.5	11.0	15.0	40.0	48.0	WNPP- M40G	06005115100
M50x1.5	12.0	18.0	50.0	61.5	WNPP- M50G	06005116100
M63x1.5	12.5	19.0	63.0	70.5	WNPP- M63G	06005123100

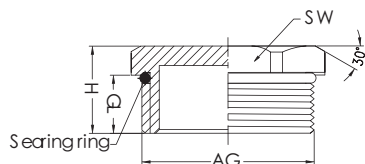
Cable glands

Metal plug

Material: Nickel-plate brass

Temperature range: -40°C...+120°C

Degree of protection: IP68 (with O-sealing)



Unit: mm

Thread side	Thread length(GL)	Height(H)	Thread dimension(AG)	Wrench size(SW)	Designation	Order NO.
PG Thread						
PG7	5	8	12.5	14	WNP- PG7	06005131000
PG9	6	9	15.2	18	WNP- PG9	06005132000
PG11	6	10	18.6	20	WNP- PG11	06005133000
PG13.5	7	10	20.4	22	WNP- PG13.5	06005134000
PG16	7	10	22.5	24	WNP- PG16	06005135000
PG21	7	11	28.3	30	WNP- PG21	06005136000
PG29	8	13	37.0	40	WNP- PG29	06005137000
PG36	8	13	47.0	50	WNP- PG36	06005138000
PG42	9	15	54.0	60	WNP- PG42	06005139000
PG48	10	17	59.3	65	WNP- PG48	06005140000
Metric Thread						
M12x1.5	5	8	12	14	WNP- M12	06005122000
M16x1.5	6	9	16	18	WNP- M16	06005111000
M18x1.5	6	10	18	20	WNP- M18	06005150000
M20x1.5	6	10	20	22	WNP- M20	06005112000
M22x1.5	7	10	22	24	WNP- M22	06005151000
M24x1.5	7	11	24	26	WNP- M24	06005119000
M25x1.5	7	11	25	27	WNP- M25	06005113000
M32x1.5	7	11	32	34	WNP- M32	06005114000
M36x1.5	8	13	36	40	WNP- M36	06005121000
M40x1.5	8	13	40	42	WNP- M40	06005115000
M48x1.5	8	13	48	52	WNP- M48	06005127000
M50x1.5	9	13	50	54	WNP- M50	06005116000
M63x1.5	10	17	63	70	WNP- M63	06005123000

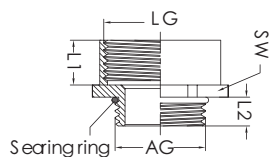
Cable glands

Metal enlargement

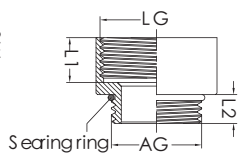
Material : Nickel- plate brass

Shape: Round, Hexagonal

Applications : Apply to the situation of the diameter need to be reduced



Hexagonal metal enlargement



Round metal enlargement

Unit: mm

Outside thread (AG)	Inside thread (LG)	Outside thread length (L1)	Inside thread length (L2)	Wrench size (SW)	Designation (Hexagonal)	Order NO.	Designation (Round)	Order NO.
PG Thread		Round/ Hexagonal	Round/ Hexagonal	Hexagonal				
PG7	PG9	5.0/5.0	10.0/10.0	17	WNSC- PG7PG9	06003132100	WNSC- PG7PG9R	06003132001
PG9	PG11	6.5/6.0	12.0/12.0	20	WNSC- PG9PG11	06002141000	WNSC- PG9PG11R	06002141001
PG11	PG13.5	6.0/6.0	12.0/12.0	22	WNSC- PG11PG13.5	06003334000	WNSC- PG11PG13.5R	06003334001
PG13.5	PG16	6.5/6.5	13.0/13.0	24	WNSC- PG13.5PG16	06003435000	WNSC- PG13.5PG16R	06003435001
PG16	PG21	6.5/6.5	14.0/14.0	30	WNSC- PG16PG21	06003536000	WNSC- PG16PG21R	06003536001
PG21	PG29	7.0/7.0	15.0/15.0	40	WNSC- PG21PG29	06003637000	WNSC- PG21PG29R	06003637001
PG29	PG36	8.0/8.0	15.0/17.0	50	WNSC- PG29PG36	06003738000	WNSC- PG29PG36R	06003738001
PG36	PG42	9.0/9.0	16.0/16.0	57	WNSC- PG36PG42	06003839000	WNSC- PG36PG42R	06003839001
PG42	PG48	9.0/10.0	16.0/16.0	65	WNSC- PG42PG48	06003940000	WNSC- PG42PG48R	06003940001
Metric Thread								
M12x1.5	M16x1.5	5.0/5.0	10./10.0	18	WNSC- M12M16	06001011001	WNSC- M12M16R	06001011011
M16x1.5	M20x1.5	6.0/6.0	12.0/12.0	22	WNSC- M16M20	06001112001	WNSC- M16M20R	06001112011
M20x1.5	M25x1.5	8.0/6.5	13.0/13.0	27	WNSC- M20M25	06001213001	WNSC- M20M25R	06001213011
M25x1.5	M32x2.0	7.5/6.5	15.0/15.0	35	WNSC- M25M32	06001314000	WNSC- M25M32R	06001314001
M32x1.5	M40x2.0	10.0/7.0	15.0/15.0	45	WNSC- M32M40	06001415000	WNSC- M32M40R	06001415001
M40x1.5	M50x2.0	10.0/9.0	16.0/16.0	55	WNSC- M40M50	06001516000	WNSC- M40M50R	06001516001
M50x1.5	M63x2.0	9.0/9.0	16.0/16.0	65	WNSC- M50M63	06001617000	WNSC- M50M63R	06001617001

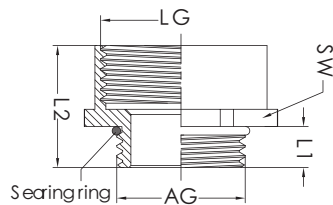
Cable glands

Polyamide enlargement

Material: Polyamide

Color: Grey

Temperature range: - 40°C...+100°C



Unit: mm

Outside thread (AG)	Inside thread(LG)	Thread length(L1)	Total length(L2)	Wrench size (SW)	Designation	Order NO.
PG Thread						
PG7	PG9	8	20	19	WNSCP- PG7PG9	06004221100
PG9	PG11	10	24	22	WNSCP- PG9PG11	06004222100
PG11	PG13.5	8	23	24	WNSCP- PG11PG13.5	06004223100
PG13.5	PG16	8	25	27	WNSCP- PG13.5PG16	06004224100
PG16	PG21	10	26	30	WNSCP- PG16PG21	06004225100
PG21	PG29	11	32	42	WNSCP- PG21PG29	06004226100
PG29	PG36	11	35	52	WNSCP- PG29PG36	06004227100
PG36	PG42	13	42	60	WNSCP- PG36PG42	06004228100
PG42	PG48	15	65	65	WNSCP- PG42PG48	06004229100
Metric Thread						
M12x1.5	M16x1.5	8	22	20	WNSCP- M12M16	06004211100
M16x1.5	M20x1.5	10	27	27	WNSCP- M16M20	06004212100
M20x1.5	M25x1.5	8	25	30	WNSCP- M20M25	06004213100
M25x1.5	M32x1.5	11	30	36	WNSCP- M25M32	06004214100
M32x1.5	M40x1.5	15	34	45	WNSCP- M32M40	06004215100
M40x1.5	M50x1.5	13	37	55	WNSCP- M40M50	06004216100

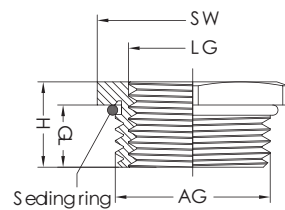
Cable glands

Metal reducer

Material: Nickel-plate brass

Shape: Round, Hexagonal

Applications: Apply to the situation of the diameter need to be reduced



Unit: mm

Outside thread(AG)	Inside thread(LG)	Thread length(GL)	Total length(H)	Wrench size(SW)	Designation(Hexagonal)	Order NO.
PG Thread						
PG9	PG7	6.0	9	17	WNSC-PG9PG7	0600412000
PG11	PG9	7.0	11	20	WNSC-PG11PG9	06004121000
PG13.5	PG11	7.0	10	22	WNSC-PG13.5PG11	06004121010
PG16	PG13.5	7.0	11	24	WNSC-PG16PG13.5	06004121110
PG21	PG16	7.0	11	30	WNSC-PG21PG16	06004124000
PG29	PG21	8.0	13	40	WNSC-PG29PG21	06004125000
PG36	PG29	9.0	13	50	WNSC-PG36PG29	06004126000
PG42	PG36	9.0	15	57	WNSC-PG42PG36	06004127000
PG48	PG42	10.0	15	65	WNSC-PG48PG42	06004128000
Metric Thread						
M16x1.5	M12x1.5	6.0	9	17	WNSC-M16M12	06004111000
M20x1.5	M16x1.5	7.0	10	22	WNSC-M20M16	06004112000
M25x1.5	M20x1.5	7.0	10	27	WNSC-M25M20	06004113000
M32x2.0	M25x1.5	8.0	11.5	35	WNSC-M32M25	06004115001
M40x2.0	M32x2.0	8.5	13	42	WNSC-M40M32	06004116000
M50x2.0	M40x2.0	9.0	14	57	WNSC-M50M40	06004117000
M63x2.0	M50x2.0	11.0	14	66	WNSC-M63M50	06004118000

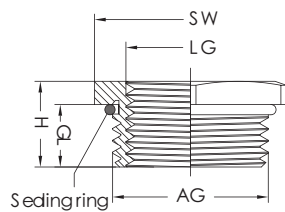
Cable glands

Polyamide reducer

Material : Polyamide

Color : Black

Temperature range: - 40°C...+100°C



Unit: mm

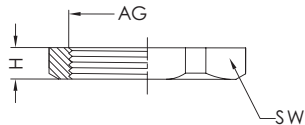
Outside thread(AG)	Inside thread(LG)	Thread length(GL)	Total length(H)	Wrench size (SW)	Designation	Order NO.
PG Thread						
PG11	PG9	9	15	23.5	WNSCP- PG11PG9	06004121100
PG13.5	PG11	8	21.5	22	WNSCP- PG13.5PG11	06004122100
PG16	PG13.5	10	27	27	WNSCP- PG16PG11	06004123110
PG16	PG16	10	16	27	WNSCP- PG16PG13.5	06004123100
PG21	PG16	11	16	33	WNSCP- PG21PG16	06004124100
PG29	PG21	11.5	17	39	WNSCP- PG29PG21	06004125100
Metric Thread						
M20x1.5	M16x1.5	9.5	24	20	WNSCP- M20M16	06004112100
M25x1.5	M20x1.5	10	27	27	WNSCP- M25M20	06004113100
M32x1.5	M25x1.5	11	39	30	WNSCP- M32M20	06004114110
M32x1.5	M32x1.5	11.5	39	36	WNSCP- M32M25	06004114100
M40x1.5	M32x1.5	11	45	45	WNSCP- M40M32	06004115100

Cable glands

Metal lock nut

Material: Nickel-plate brass

Temperature range: - 40°C...+100°C



A

Unit: mm

Thread dimension(AG)	Wrench size(SW)	Thickness(H)	Designation	Order NO.
PG Thread				
PG7	15	2.8	WNA- PG7/S	06001231000
PG9	18	2.5	WNA- PG9/S	06001232000
PG11	21	3.0	WNA- PG11/S	06001233000
PG13.5	23	3.0	WNA- PG13.5/S	06001234000
PG16	27	3.0	WNA- PG16/S	06001235000
PG21	30	3.5	WNA- PG21/S	06001236000
PG29	40	4.0	WNA- PG29/S	06001237000
PG36	50	4.5	WNA- PG36/S	06001238000
PG42	60	5.0	WNA- PG42/S	06001239000
PG48	65	5.5	WNA- PG48/S	06001240000
Metric Thread				
M12x1.5	15	2.8	WNA- M12/S	06001210000
M16x1.5	18	2.2	WNA- M16/S	06001211000
M20x1.5	22	3.0	WNA- M20/S	06001212000
M25x1.5	27	3.0	WNA- M25/S	06001213000
M32x1.5	35	3.5	WNA- M32/S	06001214000
M40x1.5	50	4.5	WNA- M40/S	06001215000
M50x1.5	57	5.0	WNA- M50/S	06001216000
M63x1.5	70	5.5	WNA- M63/S	06001223000

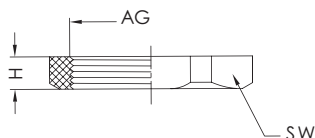
Cable glands

Polyamide lock nut

Material: Polyamide

Color: Grey,Black

Temperature range: - 40°C...+100°C



Unit: mm

Thread dimension(AG)	Wrench size(SW)	Thickness(H)	Designation(Grey)	Order NO.	Designation(Black)	Order NO.
PG Thread						
PG7	19	5.0	WNAP- PG7GŞ	06001231100	WNAP- PG7B,Ş	06001231200
PG9	22	5.0	WNAP- PG9GŞ	06001232100	WNAP- PG9B,Ş	06001232200
PG11	24	5.0	WNAP- PG11GŞ	06001233100	WNAP- PG11B,Ş	06001233200
PG13.5	27	6.0	WNAP- PG13.5GŞ	06001234100	WNAP- PG13.5B,Ş	06001234200
PG16	30	6.0	WNAP- PG16GŞ	06001235100	WNAP- PG16B,Ş	06001235200
PG21	36	7.0	WNAP- PG21GŞ	06001236100	WNAP- PG21B,Ş	06001236200
PG29	45	7.0	WNAP- PG29GŞ	06001237100	WNAP- PG29B,Ş	06001237200
PG36	60	8.0	WNAP- PG36GŞ	06001238100	WNAP- PG36B,Ş	06001238200
PG42	65	8.0	WNAP- PG42GŞ	06001239100	WNAP- PG42B,Ş	06001239200
PG48	70	8.0	WNAP- PG48GŞ	06001405100	WNAP- PG48B,Ş	06001405200
Metric Thread						
M12x1.5	19	5.0	WNAP- M12GŞ	06001210100	WNAP- M12B,Ş	06001210200
M16x1.5	22	5.0	WNAP- M16GŞ	06001211100	WNAP- M16B,Ş	06001211200
M18x1.5	24	5.0	WNAP- M18GŞ	06001250100	WNAP- M18B,Ş	06001250200
M20x1.5	27	6.0	WNAP- M20GŞ	06001212100	WNAP- M20B,Ş	06001212200
M22x1.5	30	6.0	WNAP- M22GŞ	06001251100	WNAP- M22B,Ş	06001251200
M24x1.5	30	6.0	WNAP- M24GŞ	06001219100	WNAP- M24B,Ş	06001219200
M25x1.5	32	7.0	WNAP- M25GŞ	06001213100	WNAP- M25B,Ş	06001213200
M32x1.5	40	7.5	WNAP- M32GŞ	06001214100	WNAP- M32B,Ş	06001214200
M40x1.5	50	8.0	WNAP- M40GŞ	06001215100	WNAP- M40B,Ş	06001215200
M50x1.5	65	8.0	WNAP- M50GŞ	06001216100	WNAP- M50B,Ş	06001216200
M63x1.5	74	8.0	WNAP- M63GŞ	06001223100	WNAP- M63B,Ş	06001223200